

**Government of India**  
**Ministry of Petroleum and Natural Gas**  
**Economic & Statistics Division**

\*\*\*\*\*

New Delhi  
Dated the 19<sup>th</sup> March, 2021

**Monthly Production Report**  
**February, 2021**

**1. Production of Crude Oil**

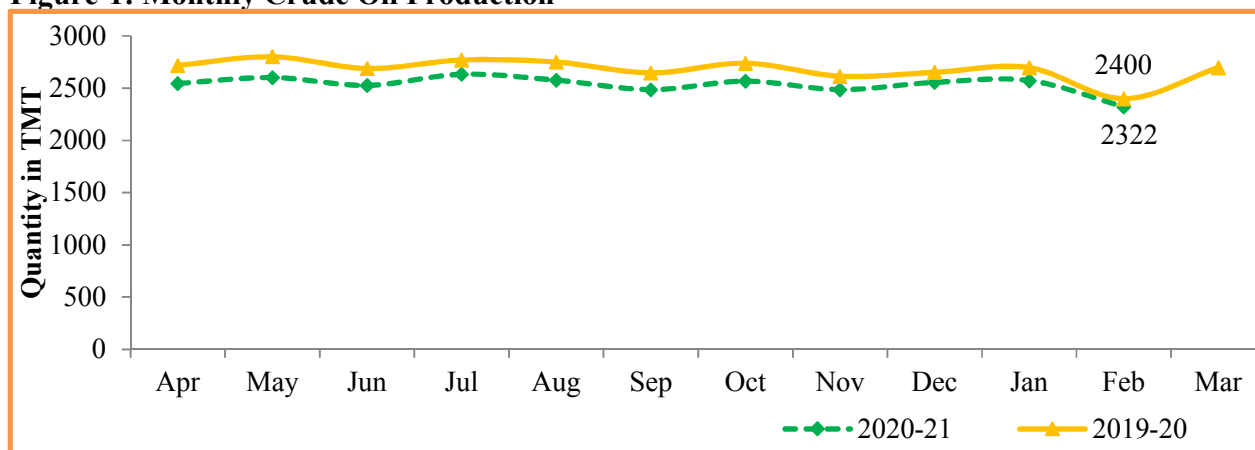
**Crude oil production<sup>1</sup>** during February, 2021 was 2322.32 TMT which is 6.89% lower than target and 3.22% lower when compared with February, 2020. Cumulative crude oil production during April-February, 2020-21 was 27878.81 TMT which is 5.65% and 5.41% lower than target for the period and production during corresponding period of last year respectively. Unit-wise and State-wise crude oil production is given at **Annexure-I**. Unit-wise crude oil production for the month of February, 2021 and cumulatively for the period April-February, 2020-21 vis-à-vis same period of last year has been shown in Table-1 and month-wise in Figure-1.

**Table-1: Crude Oil Production (in TMT)**

| Oil Company  | Target            | February (Month) |                |                |                  | April-February (Cumulative) |                 |                 |                  |
|--------------|-------------------|------------------|----------------|----------------|------------------|-----------------------------|-----------------|-----------------|------------------|
|              | 2020-21 (Apr-Mar) | 2020-21          |                | 2019-20        | % over last year | 2020-21                     |                 | 2019-20         | % over last year |
|              |                   | Target           | Prod.*         | Prod.          |                  | Target                      | Prod.*          | Prod.           |                  |
| ONGC         | 20931.68          | 1579.89          | 1544.84        | 1672.97        | 92.34            | 19163.56                    | 18469.67        | 18848.85        | 97.99            |
| OIL          | 3121.00           | 244.98           | 218.49         | 240.26         | 90.94            | 2848.51                     | 2687.75         | 2852.55         | 94.22            |
| PSC Fields   | 8265.00           | 669.28           | 559.00         | 486.33         | 114.94           | 7536.85                     | 6721.39         | 7770.91         | 86.49            |
| <b>Total</b> | <b>32317.68</b>   | <b>2494.14</b>   | <b>2322.32</b> | <b>2399.55</b> | <b>96.78</b>     | <b>29548.91</b>             | <b>27878.81</b> | <b>29472.31</b> | <b>94.59</b>     |

Note: Totals may not tally due to rounding off. \*: Provisional

**Figure-1: Monthly Crude Oil Production**



<sup>1</sup>Including condensate

Unit-wise production details with reasons for shortfall are as under:

**1.1** Crude oil production by **ONGC** (Oil and Natural Gas Corporation) in nomination block during February, 2021 was 1544.84 TMT which is 2.22% lower than target and 7.66% lower when compared with February 2020. Cumulative crude oil production by ONGC during April-February, 2020-21 was 18469.67 TMT which is 3.62% and 2.01% lower than target for the period and production during corresponding period of last year respectively. Reasons for shortfall in production are as under:

- Production planned from WO-16 cluster could not be realized due to delay in MOPU (Sagar Samrat) as activities at GPC yard Abu Dhabi got affected due to COVID-19 restrictions / lockdown.
- Production planned from new wells in Ratna field affected due to non- availability of ESPs (Electrical submersible pump) due to implications of COVID-19. Presently rigs are deployed at two well platforms and wells are being completed with ESPs.
- New wells planned under Cluster-8 development project delayed due to delay in installation of new platforms due to COVID implications.

**1.2** Crude oil production by **OIL** (Oil India Ltd) in the nomination block during February, 2021 was 218.49 TMT which is 10.81% % lower than target and 9.06% lower when compared with February 2020. Cumulative crude oil production by OIL during April-February, 2020-21 was 2687.75 TMT which is 5.64% and 5.78% lower than target for the period and production during corresponding period of last year respectively. Reasons for shortfall in production are as under:

- Less than planned contribution from workover wells, drilling wells and old wells.
- Bandhs /blockade by local people and associations after the Baghjan Blowout.

**1.3** Crude oil production by **Pvt/JVs** companies in the PSC (Production Sharing Contract) regime during February, 2021 was 559.00 TMT which is higher 14.94% when compared to the February,2020 but 16.48% lower than the monthly target. Cumulative crude oil production by Pvt/JVs companies during April-February, 2021 was 6721.39 TMT which is 10.82% and 13.51% lower than target for the period and production during corresponding period of last year respectively. Reasons for shortfall in production are as under:

- RJ-ON-90/1 (Cairn Energy India Ltd): Delayed start up full field polymer injection in Bhagyam and Aishwarya field. Delay in hook-up of Stage-2 wells and NA-1 processing facility commissioning in advance stage in ABH. Flow cease in few wells of Satellite fields. Project schedule of well and surface facility of Tukaram, Kaam-1 and GSV condensate is impacted by COVID-19.
- RAVVA (Cairn Energy India Ltd): Decline in production from producer wells
- B-80 (Hindustan Oil Exploration Company Ltd): Production from B80 field not commenced due to delay in completion of field development activities because of COVID
- PY-3 (HARDY): Production could not be commenced in PY-3 field.

## 2. Production of Natural Gas

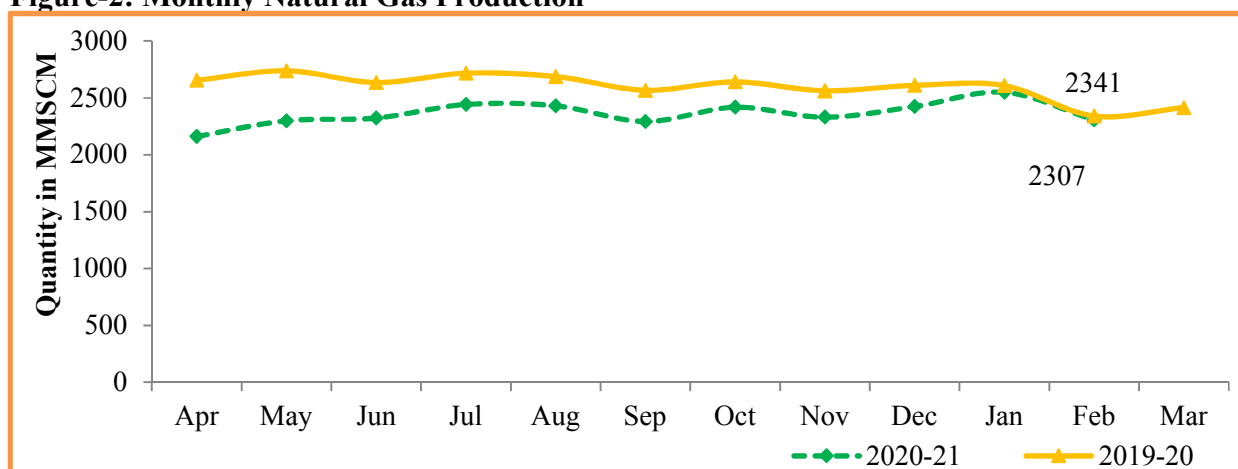
**Natural gas production** during February, 2021 was 2307.12 MMSCM which is 19.31% lower than the monthly target and 1.43% lower when compared with February, 2020. Cumulative natural gas production during April-February, 2020-21 was 25986.70 MMSCM which is 14.54% and 9.67% lower than target for the period and production during corresponding period of last year respectively. Unit-wise and state-wise natural gas production is given at **Annexure-II**. Unit-wise natural gas production for the month of February, 2021 and cumulatively for the period April-February, 2020-21 vis-à-vis same period of last year has been shown in Table-2 and month-wise in Figure-2.

**Table-2: Natural Gas Production (in MMSCM)**

| Oil Company  | Target            | February (Month) |                |                |                  | April-February (Cumulative) |                 |                 |                  |
|--------------|-------------------|------------------|----------------|----------------|------------------|-----------------------------|-----------------|-----------------|------------------|
|              | 2020-21 (Apr-Mar) | 2020-21          |                | 2019-20        | % over last year | 2020-21                     |                 | 2019-20         | % over last year |
|              |                   | Target           | Prod.*         | Prod.          |                  | Target                      | Prod.*          | Prod.           |                  |
| ONGC         | 23982.98          | 1852.25          | 1630.20        | 1869.97        | 87.18            | 21932.99                    | 20040.20        | 21840.67        | 91.76            |
| OIL          | 2761.73           | 238.14           | 187.88         | 200.79         | 93.57            | 2500.26                     | 2269.64         | 2456.64         | 92.39            |
| PSC Fields   | 6826.82           | 768.79           | 489.04         | 269.76         | 181.29           | 5976.55                     | 3676.86         | 4471.49         | 82.23            |
| <b>Total</b> | <b>33571.53</b>   | <b>2859.18</b>   | <b>2307.12</b> | <b>2340.52</b> | <b>98.57</b>     | <b>30409.81</b>             | <b>25986.70</b> | <b>28768.80</b> | <b>90.33</b>     |

Note: Totals may not tally due to rounding off. \*: Provisional

**Figure-2: Monthly Natural Gas Production**



**2.1** Natural gas production by **ONGC** in the nomination blocks during February, 2021 was 1630.20 MMSCM which is 11.99% lower than target and 12.82% lower when compared with February 2020. Cumulative natural gas production by ONGC during April-February, 2020-21 was 20040.20 MMSCM which is 8.63% and 8.24% lower than target for the period and production during corresponding period of last year respectively. Reasons for shortfall in production are as under:

- Less Gas production from WO16 cluster due to delay in MOPU.
- Less than planned production from Vasistha / S1 wells in Eastern Offshore Assets (EOA) due certain reservoir related issues.

- Less gas intake by Uran Plant for maintenance jobs and less Offtake by consumers.

**2.2** Natural gas production by **OIL** in the nomination block during February, 2021 was 187.88 MMSCM which is 21.11% lower than monthly target and 6.43% lower than the February, 2020. Cumulative natural gas production by OIL during April-February, 2020-21 was 2269.64 MMSCM which is 9.22% and 7.61% lower than target for the period and production during corresponding period of last year respectively. Reasons for shortfall in production are as under:

- Low upliftment/demand of gas by the major customers.
- Bandhs /blockade by local people and associations after the Baghjan Blowout.

**2.3** Natural gas production by **Pvt/JVs** companies in the PSC (production sharing contracts) regime during February, 2021 was 489.04 MMSCM which is 81.29% higher than the February, 2020 but 36.39% lower than monthly target. Cumulative natural gas production by Pvt/JVs during April-February, 2020-21 was 3676.86 MMSCM which is 38.48% and 17.77% lower than target for the period and production during corresponding period of last year respectively. Reasons for shortfall in production are as under:

- RJ-ON/6 (Focus Energy Limited): Reduced Gas offtake by buyer.
- KG-DWN-98/2 (Oil & Natural Gas Corpn.): U3-B well is flowing less than the expected profile and delay in commissioning of Wells of U1-field.
- KG-OSN-2001/3 (Oil & Natural Gas Corpn.): Well D-7 is under completion and Testing.
- Raniganj East (Essar Oil and Gas Exploration & Production Ltd): Production is lower due to less sales off-take.
- RJ-ON/6 (Focus Energy Limited): Production is lower due to less sales off-take.

### **3. Crude Oil Processed (Crude Throughput)**

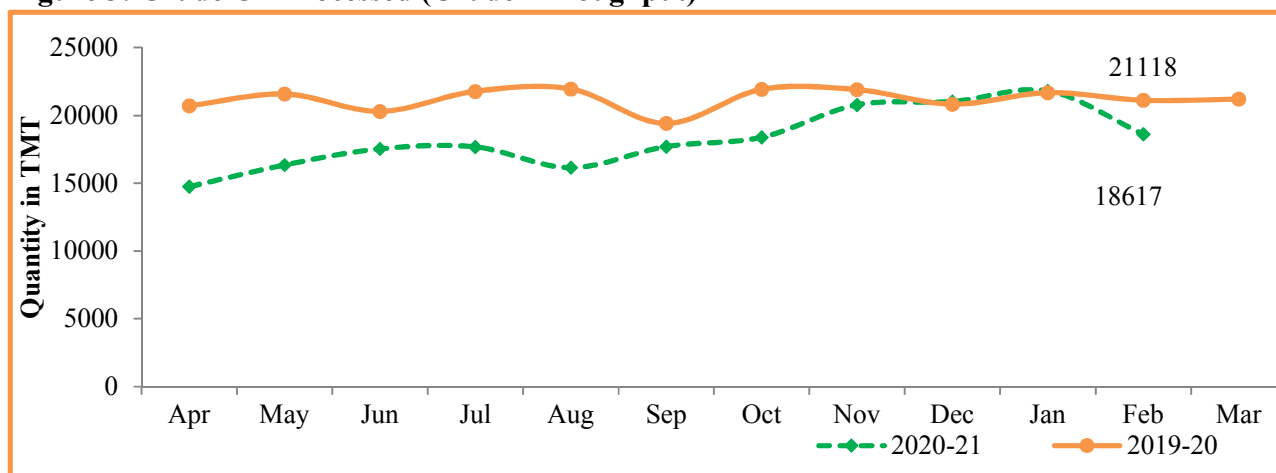
**Crude Oil Processed** during February, 2021 was 18617.41 TMT which is 7.60% lower than the target for the month and 11.84% lower than February, 2020. Cumulative crude throughput during April-February, 2020-21 was 200787.90 TMT which is 12.72% and 13.89% lower than target for the period and crude throughput during corresponding period of last year respectively. Refinery-wise details of the crude throughput and capacity utilization during the month of February, 2021 vis-à-vis February, 2020 are given at **Annexure-III and Annexure-IV**. Company-wise crude throughput for the month of February, 2021 and cumulatively for the period April-February, 2020-21 vis-à-vis same period of last year has been shown in Table-3 and month-wise in Figure-3.

**Table 3: Crude Oil Processed (Crude Throughput) (in TMT)**

| Oil Company    | Target            | February (Month) |                 |                 |                  | April-February (Cumulative) |                  |                  |                  |
|----------------|-------------------|------------------|-----------------|-----------------|------------------|-----------------------------|------------------|------------------|------------------|
|                | 2020-21 (Apr-Mar) | 2020-21          |                 | 2019-20         | % over last year | 2020-21                     |                  | 2019-20          | % over last year |
|                |                   | Target           | Prod.*          | Prod.           |                  | Target                      | Prod.*           | Prod.            |                  |
| CPSE           | 147377.43         | 11566.49         | 11729.41        | 12168.69        | 96.39            | 134436.88                   | 114662.11        | 132454.12        | 86.57            |
| IOCL           | 72400.04          | 5259.27          | 5387.06         | 5724.23         | 94.11            | 65846.41                    | 56423.74         | 63683.24         | 88.60            |
| BPCL           | 33000.00          | 2549.00          | 2674.16         | 2659.50         | 100.55           | 30149.00                    | 23462.58         | 28825.59         | 81.39            |
| HPCL           | 16999.28          | 1415.75          | 1378.92         | 1515.18         | 91.01            | 16057.23                    | 14843.56         | 15665.44         | 94.75            |
| CPCL           | 10290.00          | 840.00           | 757.60          | 735.33          | 103.03           | 9370.00                     | 7279.35          | 9307.45          | 78.21            |
| NRL            | 2549.86           | 197.15           | 227.10          | 224.69          | 101.07           | 2331.59                     | 2466.45          | 2135.69          | 115.49           |
| MRPL           | 12074.42          | 1300.00          | 1297.36         | 1304.21         | 99.47            | 10624.42                    | 10113.15         | 12756.43         | 79.28            |
| ONGC           | 63.83             | 5.32             | 7.21            | 5.55            | 129.97           | 58.23                       | 73.27            | 80.29            | 91.25            |
| <b>JVs</b>     | <b>14772.00</b>   | <b>1313.00</b>   | <b>614.84</b>   | <b>1680.43</b>  | <b>36.59</b>     | <b>13344.00</b>             | <b>14634.45</b>  | <b>18456.91</b>  | <b>79.29</b>     |
| BORL           | 7800.00           | 620.00           | 601.47          | 652.22          | 92.22            | 7140.00                     | 5587.50          | 7179.70          | 77.82            |
| HMEL           | 6972.00           | 693.00           | 13.37           | 1028.21         | 1.30             | 6204.00                     | 9046.95          | 11277.21         | 80.22            |
| <b>Private</b> | <b>89515.16</b>   | <b>7269.05</b>   | <b>6273.16</b>  | <b>7269.05</b>  | <b>86.30</b>     | <b>82271.22</b>             | <b>71491.35</b>  | <b>82271.22</b>  | <b>86.90</b>     |
| RIL            | 68894.99          | 5667.78          | 4876.36         | 5667.78         | 86.04            | 63370.05                    | 56051.02         | 63370.05         | 88.45            |
| NEL            | 20620.18          | 1601.27          | 1396.79         | 1601.27         | 87.23            | 18901.17                    | 15440.33         | 18901.17         | 81.69            |
| <b>TOTAL</b>   | <b>251664.61</b>  | <b>20148.54</b>  | <b>18617.41</b> | <b>21118.16</b> | <b>88.16</b>     | <b>230052.09</b>            | <b>200787.90</b> | <b>233182.24</b> | <b>86.11</b>     |

Note: Totals may not tally due to rounding off. \*: Provisional

**Figure 3: Crude Oil Processed (Crude Throughput)**



**3.1 CPSE Refineries' crude oil processed** during February, 2021 was 11729.41 TMT which is 1.41% higher than the target for the month but 3.61% lower when compared with February, 2020. Cumulative crude throughput by CPSE refineries during April-February, 2020-21 was 114662.11 TMT which is 14.71% and 13.43% lower than target for the period and crude throughput during corresponding period of last year respectively. Reasons for shortfall in production are as under:

- IOCL-Digboi: Crude processed lower due maintenance and installation shutdown.
- IOCL-Barauni: Crude processed lower due to lower product upliftment.

- IOCL-Bongaigaon: Crude processed lower due to as per crude availability.
- HPCL-Mumbai: Crude processed lower due to planned shutdown of secondary units.
- HPCL-Visakh: Crude processed lower due to unplanned shutdown of primary and secondary units.

**3.2 JV refineries' crude oil processed** during February, 2021 was 614.84 TMT which is 53.17% lower than the target for the month and 63.41% lower when compared with February, 2020. Cumulative crude throughput during April-February, 2020-21 was 14634.45 TMT which is 9.67% higher than target for the period but 20.71% lower when compare with the corresponding period of last year respectively. Reasons for shortfall in production are as under:

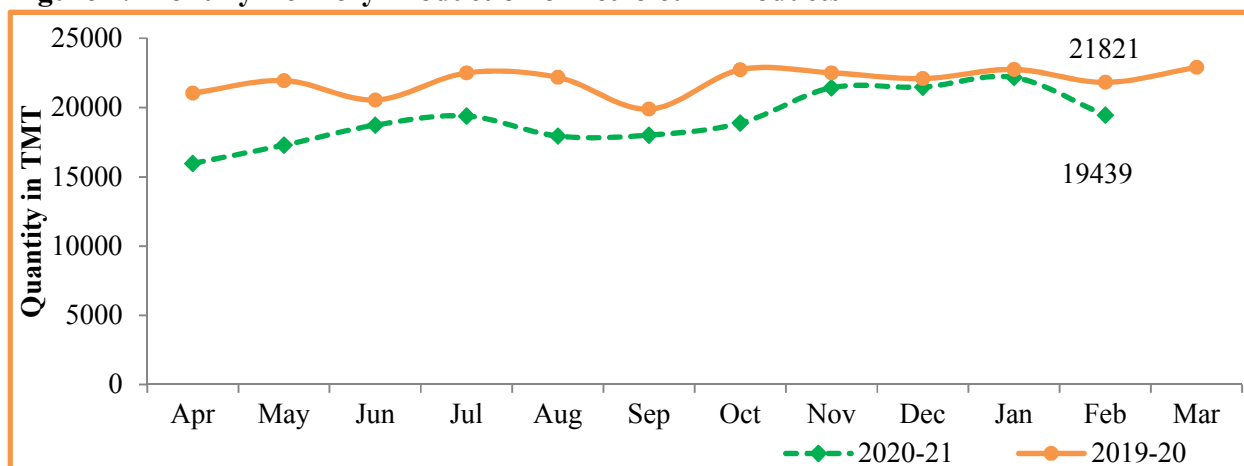
- BOREL-Bina: Crude processed lower due to lower demand of petroleum products amid ongoing COVID-19 pandemic.
- HMEL-Bhatinda: Crude processed lower due to refinery planned shutdown during the month.

**3.3 Private refineries' crude oil processed** during February, 2021 was 6273.16 TMT which is 13.70% lower than the corresponding month of last year. Cumulative crude throughput during April-February, 2020-21 was 71491.35 TMT which is 13.10% lower than the corresponding period of last year.

#### 4. Production of Petroleum Products

**Production of Petroleum Products** during February, 2021 was 19439.03 TMT which is 5.86% lower than the target for the month and 10.92% lower when compared with February, 2020. Cumulative production during April-February, 2020-21 was 210683.03 TMT which is 10.83% and 12.23% lower than target for the period and production during corresponding period of last year respectively. Unit-wise production of petroleum products is given at **Annexure-V**. Company-wise production for the month of February, 2021 and cumulatively for the period April-February, 2020-21 vis-à-vis same period of last year has been shown in Table-4 and month-wise in Figure-4.

**Figure 4: Monthly Refinery Production of Petroleum Products**



**Table 4: Production of Petroleum Products (TMT)**

| Oil Company           | Target            | January (Month) |                 |                 |                  | April-January (Cumulative) |                  |                  |                  |
|-----------------------|-------------------|-----------------|-----------------|-----------------|------------------|----------------------------|------------------|------------------|------------------|
|                       | 2020-21 (Apr-Mar) | 2020-21         |                 | 2019-20         | % over last year | 2020-21                    |                  | 2019-20          | % over last year |
|                       |                   | Target          | Prod.*          | Prod.           |                  | Target                     | Prod.*           | Prod.            |                  |
| <b>CPSE</b>           | <b>138753.95</b>  | <b>10926.31</b> | <b>11115.64</b> | <b>11691.12</b> | <b>95.08</b>     | <b>126599.88</b>           | <b>108596.68</b> | <b>125255.46</b> | <b>86.70</b>     |
| IOCL                  | 68760.50          | 5009.75         | 5134.48         | 5662.47         | 90.68            | 62520.65                   | 54182.96         | 60940.73         | 88.91            |
| BPCL                  | 31319.00          | 2433.00         | 2545.79         | 2543.13         | 100.10           | 28633.00                   | 22381.77         | 27539.65         | 81.27            |
| HPCL                  | 15914.53          | 1343.13         | 1316.68         | 1418.10         | 92.85            | 15045.41                   | 13897.01         | 14568.11         | 95.39            |
| CPCL                  | 9527.02           | 781.64          | 717.04          | 686.72          | 104.42           | 8671.74                    | 6672.73          | 8534.03          | 78.19            |
| NRL                   | 2554.46           | 199.72          | 222.32          | 217.37          | 102.28           | 2332.36                    | 2489.99          | 2050.40          | 121.44           |
| MRPL                  | 10618.44          | 1154.06         | 1172.80         | 1158.20         | 101.26           | 9341.99                    | 8902.39          | 11548.59         | 77.09            |
| ONGC                  | 60.00             | 5.01            | 6.53            | 5.14            | 127.06           | 54.73                      | 69.82            | 73.95            | 94.42            |
| <b>JVs</b>            | <b>13590.40</b>   | <b>1213.36</b>  | <b>560.11</b>   | <b>1534.63</b>  | <b>36.50</b>     | <b>12271.92</b>            | <b>13562.22</b>  | <b>17208.82</b>  | <b>78.81</b>     |
| BORL                  | 6958.40           | 553.36          | 541.06          | 601.74          | 89.92            | 6369.92                    | 4909.48          | 6560.55          | 74.83            |
| HMEL                  | 6632.00           | 660.00          | 19.05           | 932.89          | 2.04             | 5902.00                    | 8652.75          | 10648.27         | 81.26            |
| <b>Private</b>        | <b>102154.50</b>  | <b>8211.58</b>  | <b>7459.64</b>  | <b>8211.58</b>  | <b>90.84</b>     | <b>93205.01</b>            | <b>84669.54</b>  | <b>93205.01</b>  | <b>90.84</b>     |
| RIL                   | 82374.12          | 6677.60         | 6100.06         | 6677.60         | 91.35            | 75071.58                   | 69702.65         | 75071.58         | 92.85            |
| NEL                   | 19780.38          | 1533.98         | 1359.58         | 1533.98         | 88.63            | 18133.42                   | 14966.89         | 18133.42         | 82.54            |
| <b>Total Refinery</b> | <b>254498.86</b>  | <b>20351.24</b> | <b>19135.38</b> | <b>21437.32</b> | <b>89.26</b>     | <b>232076.81</b>           | <b>206828.44</b> | <b>235669.28</b> | <b>87.76</b>     |
| Fractionators         | 4523.28           | 298.37          | 303.64          | 384.15          | 79.04            | 4193.95                    | 3854.59          | 4369.95          | 88.21            |
| <b>TOTAL</b>          | <b>259022.13</b>  | <b>20649.61</b> | <b>19439.03</b> | <b>21821.48</b> | <b>89.08</b>     | <b>236270.76</b>           | <b>210683.03</b> | <b>240039.24</b> | <b>87.77</b>     |

Note: Totals may not tally due to rounding off. \*: Provisional

**4.1** Production of petroleum Products by **Oil's Refineries** during February, 2021 was 19135.38 TMT which is 5.97% lower than the target for the month and 10.74% lower when compared with February, 2020. Cumulative production of petroleum products by refineries during April-February, 2020-21 was 206828.44 TMT which is 10.88% and 12.24% lower than target for the period and production during corresponding period of last year respectively.

**4.2** Production of petroleum Products by **Fractionators** during February, 2021 was 303.64 TMT which is 1.77% higher than the target for the month but 20.96% lower when compared with February, 2020. Cumulative production by Fractionators during April-February, 2020-21 was 3854.59 TMT which is 8.09% and 11.79% lower than target for the period and production during corresponding period of last year respectively.

\*\*\*\*\*

## Crude Oil Production during the month of February, 2021 and cumulatively for the period April-February, 2020-21 vis-à-vis April-February, 2019-20

(Figures in Thousand Metric Tons)

| Name of Undertaking/Unit/State | Target production during the month | Production during the |                                  |                                    | Cumulative Production |                 |                 | % variation over last year    |                            | % variation during the month under review over Target production |
|--------------------------------|------------------------------------|-----------------------|----------------------------------|------------------------------------|-----------------------|-----------------|-----------------|-------------------------------|----------------------------|--|
|                                |                                    | Month under review *  | Corresponding month of last year | Preceding month of current year ** | (April-February)      |                 |                 | During the month under review | Upto the end of the period |  |
| (1)                            | (2)                                | (3)                   | (4)                              | (5)                                | (6)                   | (7)             | (8)             | (9)                           | (10)                       | (11)   |
| <b>1. ONGC</b>                 | <b>1579.89</b>                     | <b>1544.84</b>        | <b>1672.97</b>                   | <b>1715.74</b>                     | <b>19163.56</b>       | <b>18469.67</b> | <b>18848.85</b> | <b>-7.66</b>                  | <b>-2.01</b>               | <b>-2.22</b>   |
| <b>Onshore</b>                 | <b>452.15</b>                      | <b>457.79</b>         | <b>491.97</b>                    | <b>509.86</b>                      | <b>5406.81</b>        | <b>5425.19</b>  | <b>5569.63</b>  | <b>-6.95</b>                  | <b>-2.59</b>               | <b>1.25</b>  |
| Andhra Pradesh                 | 14.53                              | 11.64                 | 15.36                            | 13.57                              | 190.95                | 142.35          | 185.79          | -24.19                        | -23.38                     | -19.88   |
| Assam ^                        | 74.61                              | 76.01                 | 82.05                            | 83.16                              | 882.00                | 879.97          | 901.41          | -7.37                         | -2.38                      | 1.88   |
| Gujarat                        | 344.97                             | 344.14                | 367.58                           | 383.26                             | 4093.61               | 4099.61         | 4182.16         | -6.38                         | -1.97                      | -0.24  |
| Tamil Nadu                     | 18.04                              | 26.00                 | 26.98                            | 29.87                              | 240.25                | 303.25          | 300.27          | -3.64                         | 0.99                       | 44.11  |
| <b>Offshore</b>                | <b>1127.74</b>                     | <b>1087.05</b>        | <b>1180.99</b>                   | <b>1205.88</b>                     | <b>13756.75</b>       | <b>13044.47</b> | <b>13279.22</b> | <b>-7.95</b>                  | <b>-1.77</b>               | <b>-3.61</b>   |
| Eastern Offshore               | 1.16                               | 0.91                  | 1.17                             | 1.10                               | 13.48                 | 11.64           | 18.24           | -22.12                        | -36.18                     | -21.55   |
| Western Offshore               | 1016.56                            | 1010.32               | 1075.00                          | 1115.49                            | 12453.82              | 12013.03        | 11983.68        | -6.02                         | 0.24                       | -0.61  |
| Condensates                    | 110.02                             | 75.82                 | 104.82                           | 89.29                              | 1289.45               | 1019.80         | 1277.30         | -27.67                        | -20.16                     | -31.08   |
| <b>2. OIL (Onshore)</b>        | <b>244.98</b>                      | <b>218.49</b>         | <b>240.26</b>                    | <b>242.58</b>                      | <b>2848.51</b>        | <b>2687.75</b>  | <b>2852.55</b>  | <b>-9.06</b>                  | <b>-5.78</b>               | <b>-10.81</b>  |
| Assam                          | 242.13                             | 216.21                | 237.37                           | 239.75                             | 2818.37               | 2657.84         | 2824.35         | -8.92                         | -5.90                      | -10.70   |
| Arunachal Pradesh              | 2.31                               | 1.66                  | 2.19                             | 2.06                               | 23.73                 | 21.86           | 20.95           | -24.50                        | 4.30                       | -28.35   |
| Rajasthan (heavy oil)          | 0.54                               | 0.62                  | 0.69                             | 0.77                               | 6.41                  | 8.06            | 7.24            | -10.40                        | 11.22                      | 15.46  |
| <b>3. Private / JVC</b>        | <b>669.28</b>                      | <b>559.00</b>         | <b>486.33</b>                    | <b>614.75</b>                      | <b>7536.85</b>        | <b>6721.39</b>  | <b>7770.91</b>  | <b>14.94</b>                  | <b>-13.51</b>              | <b>-16.48</b>  |
| <b>Onshore</b>                 | <b>550.51</b>                      | <b>487.48</b>         | <b>401.07</b>                    | <b>529.02</b>                      | <b>6472.96</b>        | <b>5672.79</b>  | <b>6410.15</b>  | <b>21.54</b>                  | <b>-11.50</b>              | <b>-11.45</b>  |
| Andhra Pradesh                 | 3.47                               | 3.88                  | 4.11                             | 4.21                               | 44.11                 | 36.25           | 37.02           | -5.54                         | -2.07                      | 12.04  |
| Arunachal Pradesh              | 2.22                               | 2.34                  | 2.38                             | 2.53                               | 26.52                 | 27.27           | 29.76           | -1.60                         | -8.35                      | 5.46   |
| Assam                          | 2.58                               | 2.34                  | 1.89                             | 3.26                               | 32.80                 | 30.81           | 28.29           | 23.63                         | 8.89                       | -9.25  |
| Gujarat                        | 23.99                              | 15.52                 | 11.14                            | 15.20                              | 197.41                | 146.83          | 122.83          | 39.32                         | 19.54                      | -35.33   |
| Rajasthan                      | 511.55                             | 457.40                | 374.79                           | 497.17                             | 6091.25               | 5358.88         | 6111.98         | 22.04                         | -12.32                     | -10.59   |
| Tamil Nadu                     | 6.71                               | 6.00                  | 6.77                             | 6.62                               | 80.86                 | 72.63           | 80.27           | -11.44                        | -9.52                      | -10.60   |
| West Bengal                    | -                                  | 0.01                  | 0.00                             | 0.03                               | -                     | 0.12            | 0.00            | -                             | -                          | -  |
| <b>Offshore</b>                | <b>118.77</b>                      | <b>71.52</b>          | <b>85.25</b>                     | <b>85.73</b>                       | <b>1063.89</b>        | <b>1048.60</b>  | <b>1360.76</b>  | <b>-16.11</b>                 | <b>-22.94</b>              | <b>-39.79</b>  |
| Eastern Offshore               | 74.41                              | 44.24                 | 48.16                            | 49.84                              | 674.60                | 672.58          | 467.20          | -8.15                         | 43.96                      | -40.56   |
| Gujarat Offshore               | 25.66                              | 27.28                 | 37.09                            | 35.89                              | 329.18                | 376.02          | 555.73          | -26.45                        | -32.34                     | 6.34   |
| Western Offshore               | 18.70                              | 0.00                  | 0.00                             | 0.00                               | 60.10                 | 0.00            | 337.83          | -                             | -                          | -  |
| <b>GRAND TOTAL (1+2+3)</b>     | <b>2494.14</b>                     | <b>2322.32</b>        | <b>2399.55</b>                   | <b>2573.07</b>                     | <b>29548.91</b>       | <b>27878.81</b> | <b>29472.31</b> | <b>-3.22</b>                  | <b>-5.41</b>               | <b>-6.89</b>   |
| Onshore                        | 1247.63                            | 1163.75               | 1133.30                          | 1281.46                            | 14728.28              | 13785.74        | 14832.32        | 2.69                          | -7.06                      | -6.72  |
| Offshore                       | 1246.51                            | 1158.57               | 1266.24                          | 1291.61                            | 14820.64              | 14093.07        | 14639.98        | -8.50                         | -3.74                      | -7.05  |

Note: Totals may not tally due to rounding off figures. \*: Provisional. \*\*: Revised

Source: Oil Companies

Reasons for shortfall are indicated in the note.



## Natural Gas Production during the month of February, 2021 and cumulatively for the period April-February, 2020-21 vis-à-vis April-February, 2019-20

(Figures in Million Cubic Meters)

| Name of Undertaking/Unit/State | Target production during the month | Production during the |                                  |                                    | Cumulative Production                 |   |  | % variation over last year    |                            | % variation during the month under review over Target production |
|--------------------------------|------------------------------------|-----------------------|----------------------------------|------------------------------------|---------------------------------------|---|--|-------------------------------|----------------------------|--|
|                                |                                    | Month under review *  | Corresponding month of last year | Preceding month of current year ** | (April-February)                      |   |  | During the month under review | Upto the end of the period |  |
|                                |                                    |                       |                                  |                                    | Target production during current year | Actual production during current year * | Actual production during corresponding period of last year |                               |                            |  |
| (1)                            | (2)                                | (3)                   | (4)                              | (5)                                | (6)                                   | (7)                                     | (8)  | (9)                           | (10)                       | (11)   |
| <b>1. ONGC</b>                 | <b>1852.25</b>                     | <b>1630.20</b>        | <b>1869.97</b>                   | <b>1865.68</b>                     | <b>21932.99</b>                       | <b>20040.20</b>                         | <b>21840.67</b>  | <b>-12.82</b>                 | <b>-8.24</b>               | <b>-11.99</b>  |
| <b>Onshore</b>                 | <b>352.17</b>                      | <b>369.78</b>         | <b>381.38</b>                    | <b>409.39</b>                      | <b>4247.50</b>                        | <b>4385.43</b>                          | <b>4777.69</b>   | <b>-3.04</b>                  | <b>-8.21</b>               | <b>5.00</b>  |
| Andhra Pradesh                 | 69.54                              | 62.84                 | 70.18                            | 67.88                              | 788.10                                | 744.99                                  | 824.81   | -10.46                        | -9.68                      | -9.64  |
| Assam                          | 31.89                              | 28.26                 | 34.85                            | 31.56                              | 373.98                                | 355.49                                  | 423.90   | -18.89                        | -16.14                     | -11.39   |
| Gujarat                        | 73.41                              | 82.56                 | 101.63                           | 92.92                              | 902.85                                | 981.51                                  | 1171.44  | -18.76                        | -16.21                     | 12.46  |
| Rajasthan                      |                                    | 0.00                  | 0.00                             | 0.00                               | 0.00                                  | 0.00                                    | 0.00   | 0.00                          | 0.00                       | 0.00   |
| Tamil Nadu                     | 69.10                              | 59.84                 | 84.09                            | 69.85                              | 861.45                                | 798.91                                  | 980.14   | -28.83                        | -18.49                     | -13.40   |
| Tripura                        | 108.22                             | 136.27                | 90.64                            | 147.18                             | 1321.13                               | 1504.53                                 | 1377.39  | 50.34                         | 9.23                       | 25.93  |
| <b>Offshore</b>                | <b>1500.08</b>                     | <b>1260.42</b>        | <b>1488.59</b>                   | <b>1456.28</b>                     | <b>17685.49</b>                       | <b>15654.77</b>                         | <b>17062.98</b>  | <b>-15.33</b>                 | <b>-8.25</b>               | <b>-15.98</b>  |
| Eastern Offshore               | 71.79                              | 29.50                 | 44.89                            | 33.84                              | 928.19                                | 393.69                                  | 885.77   | -34.28                        | -55.55                     | -58.90   |
| Western Offshore               | 1428.29                            | 1230.92               | 1443.70                          | 1422.44                            | 16757.30                              | 15261.08                                | 16177.21   | -14.74                        | -5.66                      | -13.82   |
| <b>2. OIL</b>                  | <b>238.14</b>                      | <b>187.88</b>         | <b>200.79</b>                    | <b>211.94</b>                      | <b>2500.26</b>                        | <b>2269.64</b>                          | <b>2456.64</b>   | <b>-6.43</b>                  | <b>-7.61</b>               | <b>-21.11</b>  |
| Assam                          | 216.65                             | 165.09                | 176.52                           | 194.92                             | 2243.91                               | 2055.11                                 | 2193.44  | -6.47                         | -6.31                      | -23.80   |
| Arunachal Pradesh              | 3.08                               | 4.21                  | 4.13                             | 4.18                               | 36.74                                 | 45.94                                   | 33.67  | 1.91                          | 36.42                      | 36.79  |
| Rajasthan                      | 18.41                              | 18.58                 | 20.13                            | 12.83                              | 219.62                                | 168.60                                  | 229.52   | -7.74                         | -26.54                     | 0.89   |
| <b>3. Private / JVC</b>        | <b>768.79</b>                      | <b>489.04</b>         | <b>269.76</b>                    | <b>473.01</b>                      | <b>5976.55</b>                        | <b>3676.86</b>                          | <b>4471.49</b>   | <b>81.29</b>                  | <b>-17.77</b>              | <b>-36.39</b>  |
| <b>Onshore</b>                 | <b>224.93</b>                      | <b>188.80</b>         | <b>169.58</b>                    | <b>222.83</b>                      | <b>2356.25</b>                        | <b>2108.14</b>                          | <b>1867.20</b>   | <b>11.33</b>                  | <b>12.90</b>               | <b>-16.07</b>  |
| Andhra Pradesh                 | 2.12                               | 1.23                  | 1.60                             | 1.31                               | 21.40                                 | 11.77                                   | 13.37  | -23.46                        | -12.00                     | -42.22   |
| Arunachal Pradesh              | 0.12                               | 0.38                  | 0.49                             | 0.42                               | 1.38                                  | 4.53                                    | 6.92   | -22.81                        | -34.55                     | 228.38   |
| Assam                          | 30.13                              | 26.30                 | 17.85                            | 36.04                              | 359.40                                | 341.08                                  | 282.06   | 47.31                         | 20.93                      | -12.72   |
| Gujarat                        | 7.07                               | 5.35                  | 5.70                             | 5.93                               | 82.57                                 | 58.60                                   | 63.22  | -6.09                         | -7.31                      | -24.26   |
| Rajasthan                      | 174.19                             | 153.20                | 141.26                           | 176.43                             | 1812.71                               | 1660.74                                 | 1473.75  | 8.45                          | 12.69                      | -12.05   |
| Tamil Nadu                     | 11.30                              | 2.34                  | 2.67                             | 2.69                               | 78.80                                 | 31.42                                   | 27.88  | -12.46                        | 12.71                      | -79.29   |
| <b>CBM</b>                     | <b>88.28</b>                       | <b>51.57</b>          | <b>56.37</b>                     | <b>56.25</b>                       | <b>851.34</b>                         | <b>585.26</b>                           | <b>597.08</b>  | <b>-8.53</b>                  | <b>-1.98</b>               | <b>-41.59</b>  |
| Jharkhand (CBM)                | 5.56                               | 0.20                  | 0.33                             | 0.13                               | 32.63                                 | 1.41                                    | 4.44   | -39.94                        | -68.38                     | -96.40   |
| Madhya Pradesh (CBM)           | 33.90                              | 24.23                 | 28.68                            | 27.10                              | 385.98                                | 307.11                                  | 315.15   | -15.52                        | -2.55                      | -28.52   |
| West Bengal (CBM)              | 48.82                              | 27.13                 | 27.36                            | 29.02                              | 432.73                                | 276.75                                  | 277.49   | -0.82                         | -0.27                      | -44.42   |
| <b>Offshore</b>                | <b>455.58</b>                      | <b>248.68</b>         | <b>43.80</b>                     | <b>193.93</b>                      | <b>2768.96</b>                        | <b>983.45</b>                           | <b>2007.21</b>   | <b>467.72</b>                 | <b>-51.00</b>              | <b>-45.41</b>  |
| Eastern Offshore               | 435.74                             | 233.47                | 34.90                            | 182.08                             | 2626.71                               | 855.51                                  | 849.31   | 568.96                        | 0.73                       | -46.42   |
| Gujarat Offshore               | 9.32                               | 15.21                 | 8.90                             | 11.85                              | 109.61                                | 127.94                                  | 119.22   | 70.80                         | 7.32                       | 63.14  |
| Western Offshore               | 10.52                              | 0.00                  | 0.00                             | 0.00                               | 32.64                                 | 0.00                                    | 1038.69  | -                             | -                          | -  |
| <b>TOTAL (1+2+3)</b>           | <b>2859.18</b>                     | <b>2307.12</b>        | <b>2340.52</b>                   | <b>2550.62</b>                     | <b>30409.81</b>                       | <b>25986.70</b>                         | <b>28768.80</b>  | <b>-1.43</b>                  | <b>-9.67</b>               | <b>-19.31</b>  |
| CBM                            | 88.28                              | 51.57                 | 56.37                            | 56.25                              | 851.34                                | 585.26                                  | 597.08   | -8.53                         | -1.98                      | -41.59   |
| Onshore                        | 815.25                             | 746.45                | 751.75                           | 844.16                             | 9104.02                               | 8763.22                                 | 9101.52  | -0.70                         | -3.72                      | -8.44  |
| Offshore                       | 1955.65                            | 1509.10               | 1532.39                          | 1650.21                            | 20454.45                              | 16638.22                                | 19070.19   | -1.52                         | -12.75                     | -22.83   |

Note: Totals may not tally due to rounding off figures. \*: Provisional. \*\*: Revised

Source: Oil Companies

Reasons for shortfall are indicated in the note.

## Crude Oil Processed during the month of February, 2021 and cumulatively for the period April-February, 2020-21 vis-à-vis April-February, 2019-20

(Figures in Thousand Metric Tons)

| Name of Undertaking/Unit | Target production during the month | Production during the |                                  |                                    | Cumulative Production                   |   |  | % variation                   |                            | % variation during the month under review over Target production |
|--------------------------|------------------------------------|-----------------------|----------------------------------|------------------------------------|---|---|--|-------------------------------|----------------------------|--|
|                          |                                    | Month under review *  | Corresponding month of last year | Preceding month of current year ** | (April-February)                        |   |  | During the month under review | Upto the end of the period |  |
|                          |                                    |                       |                                  |                                    | Target production during current year** | Actual production during current year * | Actual production during corresponding period of last year |                               |                            |  |
| (1)                      | (2)                                | (3)                   | (4)                              | (5)                                | (6)                                     | (7)                                     | (8)  | (9)                           | (10)                       | (11)   |
| <b>A. Public Sector</b>  | <b>11566.49</b>                    | <b>11729.41</b>       | <b>12168.69</b>                  | <b>13204.07</b>                    | <b>134436.88</b>                        | <b>114662.11</b>                        | <b>132454.12</b>   | <b>-3.61</b>                  | <b>-13.43</b>              | <b>1.41</b>  |
| 1. IOC, Guwahati         | 66.21                              | 79.68                 | 52.43                            | 90.32                              | 802.44                                  | 760.22                                  | 892.40   | 51.99                         | -14.81                     | 20.35  |
| 2. IOC, Barauni          | 532.00                             | 518.24                | 541.38                           | 589.16                             | 5831.00                                 | 4900.31                                 | 6003.86  | -4.27                         | -18.38                     | -2.59  |
| 3. IOC, Gujarat          | 903.08                             | 912.28                | 1228.93                          | 1186.50                            | 12677.95                                | 10658.62                                | 11907.79   | -25.77                        | -10.49                     | 1.02   |
| 4. IOC, Haldia           | 658.32                             | 657.24                | 517.43                           | 723.08                             | 7571.14                                 | 6093.90                                 | 5869.51  | 27.02                         | 3.82                       | -0.16  |
| 5. IOC, Mathura          | 770.00                             | 790.36                | 747.48                           | 893.21                             | 8747.50                                 | 8072.40                                 | 8164.84  | 5.74                          | -1.13                      | 2.64   |
| 6. IOC, Digboi           | 55.00                              | 22.42                 | 55.97                            | 57.65                              | 589.00                                  | 581.68                                  | 604.79   | -59.95                        | -3.82                      | -59.24   |
| 7. IOC, Panipat          | 1044.97                            | 1046.65               | 1332.45                          | 1320.83                            | 14654.87                                | 11989.81                                | 13822.52   | -21.45                        | -13.26                     | 0.16   |
| 8. IOC, Bongaigaon       | 199.70                             | 195.93                | 90.34                            | 210.93                             | 2379.24                                 | 2220.49                                 | 1910.18  | 116.89                        | 16.25                      | -1.89  |
| 9. IOC, Paradip          | 1029.99                            | 1164.26               | 1157.82                          | 1206.44                            | 12593.27                                | 11146.32                                | 14507.35   | 0.56                          | -23.17                     | 13.04  |
| <b>Total IOC</b>         | <b>5259.27</b>                     | <b>5387.06</b>        | <b>5724.23</b>                   | <b>6278.12</b>                     | <b>65846.41</b>                         | <b>56423.74</b>                         | <b>63683.24</b>  | <b>-5.89</b>                  | <b>-11.40</b>              | <b>2.43</b>  |
| 10. BPCL, Mumbai         | 1212.00                            | 1263.77               | 1290.66                          | 1320.17                            | 14387.00                                | 11564.14                                | 13678.55   | -2.08                         | -15.46                     | 4.27   |
| 11. BPCL, Kochi          | 1337.00                            | 1410.40               | 1368.85                          | 1573.14                            | 15762.00                                | 11898.44                                | 15147.04   | 3.04                          | -21.45                     | 5.49   |
| <b>Total BPCL</b>        | <b>2549.00</b>                     | <b>2674.16</b>        | <b>2659.50</b>                   | <b>2893.31</b>                     | <b>30149.00</b>                         | <b>23462.58</b>                         | <b>28825.59</b>  | <b>0.55</b>                   | <b>-18.61</b>              | <b>4.91</b>  |
| 12. HPCL, Mumbai         | 670.00                             | 641.82                | 716.90                           | 638.70                             | 7436.55                                 | 6659.64                                 | 7345.79  | -10.47                        | -9.34                      | -4.21  |
| 13. HPCL, Visakh         | 745.75                             | 737.10                | 798.28                           | 800.24                             | 8620.68                                 | 8183.92                                 | 8319.64  | -7.66                         | -1.63                      | -1.16  |
| <b>Total HPCL</b>        | <b>1415.75</b>                     | <b>1378.92</b>        | <b>1515.18</b>                   | <b>1438.94</b>                     | <b>16057.23</b>                         | <b>14843.56</b>                         | <b>15665.44</b>  | <b>-8.99</b>                  | <b>-5.25</b>               | <b>-2.60</b>   |
| 14. CPCL, Manali         | 840.00                             | 757.60                | 735.33                           | 917.46                             | 9370.00                                 | 7279.35                                 | 9307.45  | 3.03                          | -21.79                     | -9.81  |
| 15. CPCL, CBR^           | 0.00                               | 0.00                  | 0.00                             | 0.00                               | 0.00                                    | 0.00                                    | 0.00   | -                             | -                          | -  |
| <b>Total CPCL</b>        | <b>840.00</b>                      | <b>757.60</b>         | <b>735.33</b>                    | <b>917.46</b>                      | <b>9370.00</b>                          | <b>7279.35</b>                          | <b>9307.45</b>   | <b>3.03</b>                   | <b>-21.79</b>              | <b>-9.81</b>   |
| 16. NRL, Numaligarh      | 197.15                             | 227.10                | 224.69                           | 248.84                             | 2331.59                                 | 2466.45                                 | 2135.69  | 1.07                          | 15.49                      | 15.19  |
| 17. MRPL, Mangalore      | 1300.00                            | 1297.36               | 1304.21                          | 1419.84                            | 10624.42                                | 10113.15                                | 12756.43   | -0.53                         | -20.72                     | -0.20  |
| 18. ONGC, Tatipaka       | 5.32                               | 7.21                  | 5.55                             | 7.56                               | 58.23                                   | 73.27                                   | 80.29  | 29.97                         | -8.75                      | 35.36  |
| <b>B. Joint Venture</b>  | <b>1313.00</b>                     | <b>614.84</b>         | <b>1680.43</b>                   | <b>1495.73</b>                     | <b>13344.00</b>                         | <b>14634.45</b>                         | <b>18456.91</b>  | <b>-63.41</b>                 | <b>-20.71</b>              | <b>-53.17</b>  |
| 19. BORL, Bina           | 620.00                             | 601.47                | 652.22                           | 694.44                             | 7140.00                                 | 5587.50                                 | 7179.70  | -7.78                         | -22.18                     | -2.99  |
| 20. HMEL, GGSR, Bhatinda | 693.00                             | 13.37                 | 1028.21                          | 801.29                             | 6204.00                                 | 9046.95                                 | 11277.21   | -98.70                        | -19.78                     | -98.07   |
| <b>C. Private Sector</b> | <b>7269.05</b>                     | <b>6273.16</b>        | <b>7269.05</b>                   | <b>7109.20</b>                     | <b>82271.22</b>                         | <b>71491.35</b>                         | <b>82271.22</b>  | <b>-13.70</b>                 | <b>-13.10</b>              | <b>-13.70</b>  |
| 21. RIL, Jamnagar        | 2880.93                            | 2664.36               | 2880.93                          | 2916.02                            | 30004.65                                | 31260.66                                | 30004.65   | -7.52                         | 4.19                       | -7.52  |
| 22. RIL, SEZ             | 2786.85                            | 2212.01               | 2786.85                          | 2648.38                            | 33365.40                                | 24790.36                                | 33365.40   | -20.63                        | -25.70                     | -20.63   |
| <b>Total RIL</b>         | <b>5667.78</b>                     | <b>4876.36</b>        | <b>5667.78</b>                   | <b>5564.40</b>                     | <b>63370.05</b>                         | <b>56051.02</b>                         | <b>63370.05</b>  | <b>-13.96</b>                 | <b>-11.55</b>              | <b>-13.96</b>  |
| 23. NEL, Vadinar         | 1601.27                            | 1396.79               | 1601.27                          | 1544.80                            | 18901.17                                | 15440.33                                | 18901.17   | -12.77                        | -18.31                     | -12.77   |
| <b>TOTAL(A+B+C)</b>      | <b>20148.54</b>                    | <b>18617.41</b>       | <b>21118.16</b>                  | <b>21809.00</b>                    | <b>230052.09</b>                        | <b>200787.90</b>                        | <b>233182.24</b>   | <b>-11.84</b>                 | <b>-13.89</b>              | <b>-7.60</b>   |

Note: Totals may not tally due to rounding off figures.

\*: Provisional. \*\*:Revised

Reasons for shortfall are indicated in the note.

^: CPCL CBR refinery is under shutdown due to limitation in meeting required Product specifications with the existing configuration.

Source: Oil Companies

## Refinery-wise Capacity Utilisation during the month of February, 2021 and cumulatively for the period April-February, 2020-21 vis-à-vis April-February, 2019-20

(Figures in Thousand Metric Tons)

| Name of Undertaking/Unit | February, 2021              |                      |                                     | February, 2020              |                    |                                     | Cumulative (April - February) |                      |                                     |                             |                    |                                     |
|--------------------------|-----------------------------|----------------------|-------------------------------------|-----------------------------|--------------------|-------------------------------------|-------------------------------|----------------------|-------------------------------------|-----------------------------|--------------------|-------------------------------------|
|                          | Prorated Installed Capacity | Actual Crude T'put * | % Utilisation of Installed Capacity | Prorated Installed Capacity | Actual Crude T'put | % Utilisation of Installed Capacity | 2020-21                       |                      |                                     | 2019-20                     |                    |                                     |
|                          |                             |                      |                                     |                             |                    |                                     | Prorated Installed Capacity   | Actual Crude T'put * | % Utilisation of Installed Capacity | Prorated Installed Capacity | Actual Crude T'put | % Utilisation of Installed Capacity |
| (1)                      | (2)                         | (3)                  | (4)                                 | (5)                         | (6)                | (7)                                 | (8)                           | (9)                  | (10)                                | (11)                        | (12)               | (13)                                |
| <b>A. Public Sector</b>  | <b>10937.00</b>             | <b>11729.41</b>      | <b>107.25</b>                       | <b>10868.00</b>             | <b>12168.69</b>    | <b>111.97</b>                       | <b>130458.00</b>              | <b>114662.11</b>     | <b>87.89</b>                        | <b>130033.00</b>            | <b>132454.12</b>   | <b>101.86</b>                       |
| 1. IOC, Guwahati         | 77.00                       | 79.68                | 103.49                              | 77.00                       | 52.43              | 68.09                               | 915.00                        | 760.22               | 83.08                               | 915.00                      | 892.40             | 97.53                               |
| 2. IOC, Barauni          | 460.00                      | 518.24               | 112.66                              | 459.00                      | 541.38             | 117.95                              | 5490.00                       | 4900.31              | 89.26                               | 5492.00                     | 6003.86            | 109.32                              |
| 3. IOC, Gujarat          | 1051.00                     | 912.28               | 86.80                               | 1048.00                     | 1228.93            | 117.26                              | 12536.00                      | 10658.62             | 85.02                               | 12540.00                    | 11907.79           | 94.96                               |
| 4. IOC, Haldia           | 614.00                      | 657.24               | 107.04                              | 574.00                      | 517.43             | 90.14                               | 7321.00                       | 6093.90              | 83.24                               | 6865.00                     | 5869.51            | 85.50                               |
| 5. IOC, Mathura          | 614.00                      | 790.36               | 128.72                              | 612.00                      | 747.48             | 122.14                              | 7321.00                       | 8072.40              | 110.26                              | 7322.00                     | 8164.84            | 111.51                              |
| 6. IOC, Digboi           | 50.00                       | 22.42                | 44.83                               | 50.00                       | 55.97              | 111.94                              | 595.00                        | 581.68               | 97.76                               | 595.00                      | 604.79             | 101.65                              |
| 7. IOC, Panipat          | 1151.00                     | 1046.65              | 90.93                               | 1148.00                     | 1332.45            | 116.07                              | 13726.00                      | 11989.81             | 87.35                               | 13730.00                    | 13822.52           | 100.67                              |
| 8. IOC, Bongaigaon       | 180.00                      | 195.93               | 108.85                              | 180.00                      | 90.34              | 50.19                               | 2150.00                       | 2220.49              | 103.28                              | 2151.00                     | 1910.18            | 88.80                               |
| 9. IOC, Paradip          | 1151.00                     | 1164.26              | 101.15                              | 1148.00                     | 1157.82            | 0.00                                | 13726.00                      | 11146.32             | 81.21                               | 13730.00                    | 14507.35           | 0.00                                |
| <b>Total IOC</b>         | <b>5347.00</b>              | <b>5387.06</b>       | <b>100.75</b>                       | <b>5294.00</b>              | <b>5724.23</b>     | <b>108.13</b>                       | <b>63780.00</b>               | <b>56423.74</b>      | <b>88.47</b>                        | <b>63339.00</b>             | <b>63683.24</b>    | <b>100.54</b>                       |
| 10. BPCL, Mumbai         | 921.00                      | 1263.77              | 137.22                              | 918.00                      | 1290.66            | 140.59                              | 10981.00                      | 11564.14             | 105.31                              | 10984.00                    | 13678.55           | 124.53                              |
| 11. BPCL, Kochi          | 1189.00                     | 1410.40              | 118.62                              | 1186.00                     | 1368.85            | 115.42                              | 14184.00                      | 11898.44             | 83.89                               | 14187.00                    | 15147.04           | 106.77                              |
| <b>Total BPCL</b>        | <b>2110.00</b>              | <b>2674.16</b>       | <b>126.74</b>                       | <b>2104.00</b>              | <b>2659.50</b>     | <b>126.40</b>                       | <b>25164.00</b>               | <b>23462.58</b>      | <b>93.24</b>                        | <b>25171.00</b>             | <b>28825.59</b>    | <b>114.52</b>                       |
| 12. HPCL, Mumbai         | 575.00                      | 641.82               | 111.62                              | 574.00                      | 716.90             | 124.89                              | 6863.00                       | 6659.64              | 97.04                               | 6865.00                     | 7345.79            | 107.00                              |
| 13. HPCL, Visakh         | 637.00                      | 737.10               | 115.71                              | 635.00                      | 798.28             | 125.71                              | 7595.00                       | 8183.92              | 107.75                              | 7597.00                     | 8319.64            | 109.51                              |
| <b>Total HPCL</b>        | <b>1212.00</b>              | <b>1378.92</b>       | <b>113.77</b>                       | <b>1209.00</b>              | <b>1515.18</b>     | <b>125.33</b>                       | <b>14458.00</b>               | <b>14843.56</b>      | <b>102.67</b>                       | <b>14462.00</b>             | <b>15665.44</b>    | <b>108.32</b>                       |
| 14. CPCL, Manali         | 805.00                      | 757.60               | 94.11                               | 803.00                      | 735.33             | 91.57                               | 9608.00                       | 7279.35              | 75.76                               | 9611.00                     | 9307.45            | 96.84                               |
| 15. CPCL, CBR^           | 77.00                       | 0.00                 | 0.00                                | 77.00                       | 0.00               | 0.00                                | 915.00                        | 0.00                 | 0.00                                | 915.00                      | 0.00               | 0.00                                |
| <b>Total CPCL</b>        | <b>882.00</b>               | <b>757.60</b>        | <b>85.90</b>                        | <b>880.00</b>               | <b>735.33</b>      | <b>83.56</b>                        | <b>10523.00</b>               | <b>7279.35</b>       | <b>69.18</b>                        | <b>10526.00</b>             | <b>9307.45</b>     | <b>88.42</b>                        |
| 16. NRL, Numaligarh      | 230.00                      | 227.10               | 98.74                               | 230.00                      | 224.69             | 97.69                               | 2745.00                       | 2466.45              | 89.85                               | 2746.00                     | 2135.69            | 77.77                               |
| 17. MRPL, Mangalore      | 1151.00                     | 1297.36              | 112.72                              | 1148.00                     | 1304.21            | 113.61                              | 13726.00                      | 10113.15             | 73.68                               | 13730.00                    | 12756.43           | 92.91                               |
| 18. ONGC, Tatipaka       | 5.00                        | 7.21                 | 144.14                              | 5.00                        | 5.55               | 110.90                              | 60.00                         | 73.27                | 122.11                              | 60.00                       | 80.29              | 133.82                              |
| <b>B. Joint Venture</b>  | <b>1465.00</b>              | <b>614.84</b>        | <b>41.97</b>                        | <b>1461.00</b>              | <b>1680.43</b>     | <b>115.02</b>                       | <b>17478.00</b>               | <b>14634.45</b>      | <b>83.73</b>                        | <b>17482.00</b>             | <b>18456.91</b>    | <b>105.58</b>                       |
| 19. BORL, Bina           | 598.00                      | 601.47               | 100.58                              | 597.00                      | 652.22             | 109.25                              | 7138.00                       | 5587.50              | 78.28                               | 7139.00                     | 7179.70            | 100.57                              |
| 20. HMEL, GGSR, Bhatinda | 867.00                      | 13.37                | 1.54                                | 864.00                      | 1028.21            | 119.01                              | 10340.00                      | 9046.95              | 87.49                               | 10343.00                    | 11277.21           | 109.03                              |
| <b>C. Private Sector</b> | <b>6766.00</b>              | <b>6273.16</b>       | <b>92.72</b>                        | <b>6748.00</b>              | <b>7269.05</b>     | <b>107.72</b>                       | <b>80709.00</b>               | <b>71491.35</b>      | <b>88.58</b>                        | <b>80730.00</b>             | <b>82271.22</b>    | <b>101.91</b>                       |
| 21. RIL, Jamnagar        | 2532.00                     | 2664.36              | 105.23                              | 2525.00                     | 2880.93            | 114.10                              | 30197.00                      | 31260.66             | 103.52                              | 30205.00                    | 30004.65           | 99.34                               |
| 22. RIL, SEZ             | 2700.00                     | 2212.01              | 81.93                               | 2693.00                     | 2786.85            | 103.49                              | 32210.00                      | 24790.36             | 76.96                               | 32219.00                    | 33365.40           | 103.56                              |
| <b>Total RIL</b>         | <b>5232.00</b>              | <b>4876.36</b>       | <b>93.20</b>                        | <b>5217.00</b>              | <b>5667.78</b>     | <b>108.64</b>                       | <b>62408.00</b>               | <b>56051.02</b>      | <b>89.81</b>                        | <b>62423.00</b>             | <b>63370.05</b>    | <b>101.52</b>                       |
| 23. NEL, Vadinar         | 1534.00                     | 1396.79              | 91.06                               | 1530.00                     | 1601.27            | 104.66                              | 18301.00                      | 15440.33             | 84.37                               | 18306.00                    | 18901.17           | 103.25                              |
| <b>TOTAL(A+B+C)</b>      | <b>19168.00</b>             | <b>18617.41</b>      | <b>97.13</b>                        | <b>19077.00</b>             | <b>21118.16</b>    | <b>110.70</b>                       | <b>228645.00</b>              | <b>200787.90</b>     | <b>87.82</b>                        | <b>228245.00</b>            | <b>233182.24</b>   | <b>102.16</b>                       |

Note: Crude throughput in terms of crude oil processed.

\*: Provisional.

\*\*: Revised

Source: Oil Companies

## Production of Petroleum Products during the month of February, 2021 and cumulatively for the period April-February, 2020-21 vis-à-vis April-February, 2019-20

(Figures in Thousand Metric Tons)

| Name of Undertaking/Unit      | Target production during the month | Production during the |                                  |                                    | Cumulative Production                   |  |  | % variation over last year    |                            | % variation during the month under review over Target production |
|-------------------------------|------------------------------------|-----------------------|----------------------------------|------------------------------------|---|--|--|-------------------------------|----------------------------|--|
|                               |                                    | Month under review *  | Corresponding month of last year | Preceding month of current year ** | (April-February)                        |  |  | During the month under review | Upto the end of the period |  |
|                               |                                    |                       |                                  |                                    | Target production during current year** | Actual production during current year* | Actual production during corresponding period of last year |                               |                            |  |
| (1)                           | (2)                                | (3)                   | (4)                              | (5)                                | (6)                                     | (7)                                    | (8)  | (9)                           | (10)                       | (11)   |
| <b>A. Public Sector</b>       | <b>10926.31</b>                    | <b>11115.64</b>       | <b>11691.12</b>                  | <b>12536.37</b>                    | <b>126599.88</b>                        | <b>108596.68</b>                       | <b>125255.46</b>   | <b>-4.92</b>                  | <b>-13.30</b>              | <b>1.73</b>  |
| 1. IOC, Guwahati              | 65.51                              | 95.71                 | 78.45                            | 114.74                             | 793.96                                  | 901.18                                 | 1102.72  | 22.01                         | -18.28                     | 46.10  |
| 2. IOC, Barauni               | 480.32                             | 475.55                | 526.70                           | 539.80                             | 5283.32                                 | 4626.56                                | 5564.78  | -9.71                         | -16.86                     | -0.99  |
| 3. IOC, Gujarat               | 873.30                             | 871.83                | 1245.60                          | 1155.43                            | 12122.49                                | 10186.17                               | 11398.36   | -30.01                        | -10.63                     | -0.17  |
| 4. IOC, Haldia                | 606.04                             | 602.72                | 468.24                           | 682.71                             | 6970.97                                 | 5598.02                                | 5367.47  | 28.72                         | 4.30                       | -0.55  |
| 5. IOC, Mathura               | 750.51                             | 777.22                | 793.41                           | 875.07                             | 8526.08                                 | 7924.13                                | 7997.03  | -2.04                         | -0.91                      | 3.56   |
| 6. IOC, Digboi                | 56.29                              | 29.83                 | 57.48                            | 59.00                              | 592.16                                  | 589.53                                 | 602.30   | -48.10                        | -2.12                      | -47.00   |
| 7. IOC, Panipat               | 1051.36                            | 1049.36               | 1385.34                          | 1381.88                            | 14819.48                                | 12321.92                               | 14076.39   | -24.25                        | -12.46                     | -0.19  |
| 8. IOC, Bongaigaon            | 195.91                             | 181.61                | 71.13                            | 193.51                             | 2030.69                                 | 2106.22                                | 1745.20  | 155.34                        | 20.69                      | -7.30  |
| 9. IOC, Paradip               | 930.50                             | 1050.64               | 1036.14                          | 1124.68                            | 11381.50                                | 9929.24                                | 13086.47   | 1.40                          | -24.13                     | 12.91  |
| <b>Total IOC</b>              | <b>5009.75</b>                     | <b>5134.48</b>        | <b>5662.47</b>                   | <b>6126.82</b>                     | <b>62520.65</b>                         | <b>54182.96</b>                        | <b>60940.73</b>  | <b>-9.32</b>                  | <b>-11.09</b>              | <b>2.49</b>  |
| 10. BPCL, Mumbai              | 1166.00                            | 1221.62               | 1262.42                          | 1257.15                            | 13842.00                                | 11171.17                               | 13213.47   | -3.23                         | -15.46                     | 4.77   |
| 11. BPCL, Kochi               | 1267.00                            | 1324.17               | 1280.71                          | 1426.90                            | 14791.00                                | 11210.59                               | 14326.18   | 3.39                          | -21.75                     | 4.51   |
| <b>Total BPCL</b>             | <b>2433.00</b>                     | <b>2545.79</b>        | <b>2543.13</b>                   | <b>2684.05</b>                     | <b>28633.00</b>                         | <b>22381.77</b>                        | <b>27539.65</b>  | <b>0.10</b>                   | <b>-18.73</b>              | <b>4.64</b>  |
| 12. HPCL, Mumbai              | 653.33                             | 602.20                | 688.39                           | 606.33                             | 6972.46                                 | 6262.87                                | 6991.75  | -12.52                        | -10.42                     | -7.83  |
| 13. HPCL, Visakh              | 689.80                             | 714.49                | 729.71                           | 813.75                             | 8072.95                                 | 7634.14                                | 7576.36  | -2.09                         | 0.76                       | 3.58   |
| <b>Total HPCL</b>             | <b>1343.13</b>                     | <b>1316.68</b>        | <b>1418.10</b>                   | <b>1420.09</b>                     | <b>15045.41</b>                         | <b>13897.01</b>                        | <b>14568.11</b>  | <b>-7.15</b>                  | <b>-4.61</b>               | <b>-1.97</b>   |
| 14. CPCL, Manali              | 781.64                             | 717.04                | 686.72                           | 825.11                             | 8671.74                                 | 6672.73                                | 8533.15  | 4.42                          | -21.80                     | -8.26  |
| 15. CPCL, CBR                 | 0.00                               | 0.00                  | 0.00                             | 0.00                               | 0.00                                    | 0.00                                   | 0.88   | -                             | -                          | -  |
| <b>Total CPCL</b>             | <b>781.64</b>                      | <b>717.04</b>         | <b>686.72</b>                    | <b>825.11</b>                      | <b>8671.74</b>                          | <b>6672.73</b>                         | <b>8534.03</b>   | <b>4.42</b>                   | <b>-21.81</b>              | <b>-8.26</b>   |
| 16. NRL, Numaligarh           | 199.72                             | 222.32                | 217.37                           | 252.95                             | 2332.36                                 | 2489.99                                | 2050.40  | 2.28                          | 21.44                      | 11.32  |
| 17. MRPL, Mangalore           | 1154.06                            | 1172.80               | 1158.20                          | 1220.14                            | 9341.99                                 | 8902.39                                | 11548.59   | 1.26                          | -22.91                     | 1.62   |
| 18. ONGC, Tatipaka            | 5.01                               | 6.53                  | 5.14                             | 7.21                               | 54.73                                   | 69.82                                  | 73.95  | 27.06                         | -5.58                      | 30.39  |
| <b>B. Joint Venture</b>       | <b>1213.36</b>                     | <b>560.11</b>         | <b>1534.63</b>                   | <b>1378.92</b>                     | <b>12271.92</b>                         | <b>13562.22</b>                        | <b>17208.82</b>  | <b>-63.50</b>                 | <b>-21.19</b>              | <b>-53.84</b>  |
| 19. BORL, Bina                | 553.36                             | 541.06                | 601.74                           | 598.49                             | 6369.92                                 | 4909.48                                | 6560.55  | -10.08                        | -25.17                     | -2.22  |
| 20. HMEL, GGSR, Bhatinda      | 660.00                             | 19.05                 | 932.89                           | 780.43                             | 5902.00                                 | 8652.75                                | 10648.27   | -97.96                        | -18.74                     | -97.11   |
| <b>C. Private Sector</b>      | <b>8211.58</b>                     | <b>7459.64</b>        | <b>8211.58</b>                   | <b>7907.34</b>                     | <b>93205.01</b>                         | <b>84669.54</b>                        | <b>93205.01</b>  | <b>-9.16</b>                  | <b>-9.16</b>               | <b>-9.16</b>   |
| 21. RIL, Jamnagar             | 2918.90                            | 2726.91               | 2918.90                          | 2854.63                            | 31786.99                                | 32707.54                               | 31786.99   | -6.58                         | 2.90                       | -6.58  |
| 22. RIL, SEZ                  | 3758.70                            | 3373.15               | 3758.70                          | 3575.23                            | 43284.60                                | 36995.11                               | 43284.60   | -10.26                        | -14.53                     | -10.26   |
| <b>Total RIL</b>              | <b>6677.60</b>                     | <b>6100.06</b>        | <b>6677.60</b>                   | <b>6429.86</b>                     | <b>75071.58</b>                         | <b>69702.65</b>                        | <b>75071.58</b>  | <b>-8.65</b>                  | <b>-7.15</b>               | <b>-8.65</b>   |
| 23. NEL, Vadinar              | 1533.98                            | 1359.58               | 1533.98                          | 1477.48                            | 18133.42                                | 14966.89                               | 18133.42   | -11.37                        | -17.46                     | -11.37   |
| <b>TOTAL REFINERY (A+B+C)</b> | <b>20351.24</b>                    | <b>19135.38</b>       | <b>21437.32</b>                  | <b>21822.63</b>                    | <b>232076.81</b>                        | <b>206828.44</b>                       | <b>235669.28</b>   | <b>-10.74</b>                 | <b>-12.24</b>              | <b>-5.97</b>   |
| ONGC                          | 199.58                             | 219.10                | 281.06                           | 262.46                             | 3077.74                                 | 2779.38                                | 3182.58  | -22.04                        | -12.67                     | 9.78   |
| GAIL                          | 95.79                              | 81.89                 | 100.34                           | 84.88                              | 1086.36                                 | 1044.18                                | 1161.13  | -18.38                        | -10.07                     | -14.51   |
| OIL                           | 3.00                               | 2.64                  | 2.76                             | 3.19                               | 29.85                                   | 31.03                                  | 26.24  | -4.27                         | 18.23                      | -11.90   |
| <b>D. Total Fractionators</b> | <b>298.37</b>                      | <b>303.64</b>         | <b>384.15</b>                    | <b>350.53</b>                      | <b>4193.95</b>                          | <b>3854.59</b>                         | <b>4369.95</b>   | <b>-20.96</b>                 | <b>-11.79</b>              | <b>1.77</b>  |
| <b>Grand Total (A+B+C+D)</b>  | <b>20649.61</b>                    | <b>19439.03</b>       | <b>21821.48</b>                  | <b>22173.16</b>                    | <b>236270.76</b>                        | <b>210683.03</b>                       | <b>240039.24</b>   | <b>-10.92</b>                 | <b>-12.23</b>              | <b>-5.86</b>   |

Note: Totals may not tally due to rounding off figures. \*: Provisional. \*\*: Revised

Source: Oil Companies

Reasons for shortfall are indicated in the note.