

Government of India
Ministry of Petroleum and Natural Gas
Economic & Statistics Division

New Delhi
Dated the 19th February, 2020

Monthly Production Report
January, 2020

1. Crude Oil

Crude oil production¹ during January, 2020 was 2696.77 TMT which is 12.48% lower than target and 5.30% lower when compared with January 2019. Cumulative crude oil production during April-January, 2019-20 was 27072.34 TMT which is 6.70% and 5.95% lower than target for the period and production during corresponding period of last year respectively. Unit-wise and State-wise crude oil production is given at **Annexure-I**. Unit-wise crude oil production for the month of January, 2020 and cumulatively for the period April-January, 2019-20 vis-à-vis same period of last year has been shown in Table-1 and month-wise in **Figure-1**.

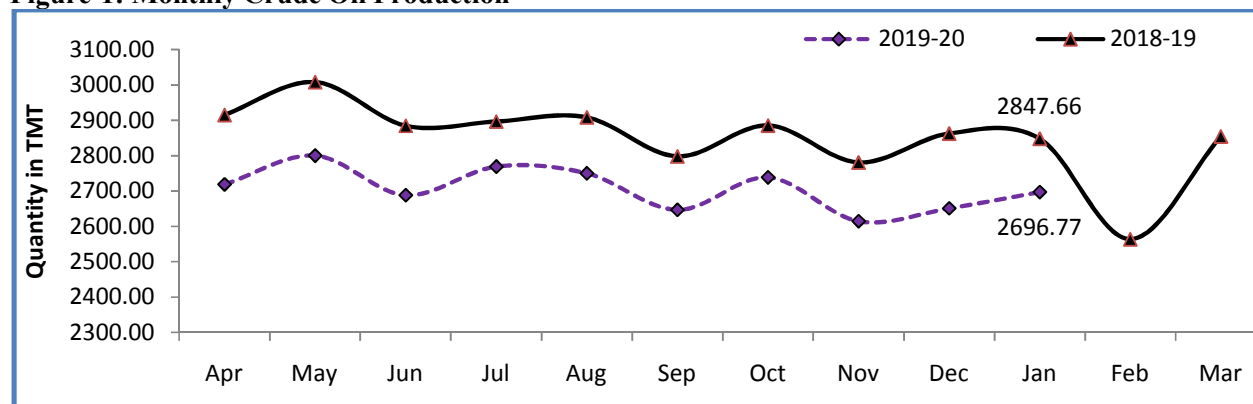
Table-1: Crude Oil Production (in TMT)

Oil Company	Target	January (Month)				April-January (Cumulative)			
	2019-20 (Apr-Mar)	2019-20		2018-19	% over last year	2019-20		2018-19	% over last year
		Target	Prod.*	Prod.		Target	Prod.*	Prod.	
ONGC	22153.90	2011.29	1788.92	1766.98	101.24	18172.50	17175.88	17675.14	97.18
OIL	3424.90	294.82	257.55	254.79	101.08	2854.11	2612.29	2771.35	94.26
PSC Fields	9463.34	775.25	650.30	825.90	78.74	7989.36	7284.17	8338.73	87.35
Total	35042.15	3081.37	2696.77	2847.66	94.70	29015.97	27072.34	28785.22	94.05

Note: Totals may not tally due to rounding off.

*: Provisional

Figure-1: Monthly Crude Oil Production



¹Including condensate

Unit-wise production details with reasons for shortfall are as under:

1.1 Crude oil production by **ONGC** during January, 2020 was 1788.92 TMT which is 1.24 higher when compared with January, 2019 but 11.06% lower than the target for the month. Cumulative crude oil production by ONGC during April-January, 2019-20 was 17175.88 TMT which is 5.48% and 2.82% lower than target for the period and production during corresponding period of last year respectively. Reasons for shortfall in production are as under:

- Non realization of production from WO-16 cluster due to unavailability of MOPU.
- Less production from Mumbai High, Heera, Neelam & B173A, B-127 Cluster fields due to increase in water cut.

1.2 Crude oil production by **OIL** during January, 2020 was 257.55 TMT which is 1.08 higher when compared with January, 2019 but 12.64% lower than the target for the month. Cumulative crude oil production by OIL during April-January, 2019-20 was 2612.29 TMT which is 8.47% and 5.74% lower than target for the period and production during corresponding period of last year respectively. Reasons for shortfall in production are as under:

- Less than planned contribution from workover and drilling wells.
- Less than planned contribution from Old well- Rise in water cut in wells & Decline in total liquid production of wells as a consequential effect of the wells shut-in during bandh.

1.3 Crude oil production by **Pvt/JVs** during January, 2020 was 650.30 TMT which is lower by 16.12% than the monthly target and 21.26% lower than January, 2019. Cumulative crude oil production by Pvt/JVs during April-January, 2019-20 was 7284.17 TMT which is 8.83% and 12.65% lower than target for the period and production during corresponding period of last year respectively. Reasons for shortfall in production are as under:

- RJ-ON-90/1-Mangala (**CEIL**): Delay in making 45 FM-1/4 infill wells on line. Lag in liquidating the inventory of planned work overs and production optimization jobs. ESP failure in FM-3 well M-357, M-359 and M-387.
- Operational issues in Bhagyam, Aishwarya and ABH fields. (**CEIL**)
- Satellite Fields: Failure or flow cease in wells

2. Natural Gas

Natural gas production during January, 2020 was 2606.67 MMSCM which is 13.49% lower than the monthly target and 8.26% lower when compared with January, 2019. Cumulative natural gas production during April-January, 2019-20 was 26427.23 MMSCM which is 7.74%

and 3.87% lower than target for the period and production during corresponding period of last year respectively. Unit-wise and state-wise natural gas production is given at **Annexure-II**. Unit-wise natural gas production for the month of January, 2020 and cumulatively for the period April-January, 2019-20 vis-à-vis same period of last year has been shown in Table-2 and month-wise in Figure-2.

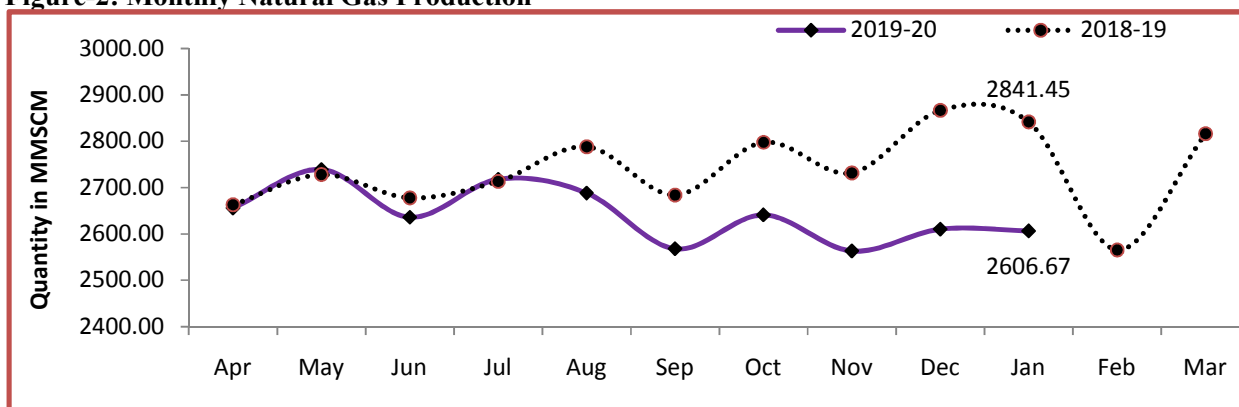
Table-2: Natural Gas Production (MMSCM)

Oil Company	Target	January (Month)				April-January (Cumulative)			
	2019-20 (Apr-Mar)	2019-20		2018-19	% over last year	2019-20		2018-19	% over last year
		Target	Prod.*	Prod.		Target	Prod.*	Prod.	
ONGC	25848.00	2293.55	2050.75	2169.77	94.51	21304.67	19969.65	20586.02	97.01
OIL	3309.59	264.57	208.48	222.29	93.79	2798.39	2255.85	2283.08	98.81
PSC Fields	5395.20	454.91	347.44	449.40	77.31	4542.32	4201.73	4622.56	90.90
Total	34552.79	3013.03	2606.67	2841.45	91.74	28645.38	26427.23	27491.66	96.13

Note: Totals may not tally due to rounding off.

*: Provisional

Figure-2: Monthly Natural Gas Production



2.1 Natural gas production by **ONGC** during January, 2020 was 2050.75 MMSCM which is 10.59% lower than target and 5.49% lower when compared with January 2019. Cumulative natural gas production by ONGC during April-January, 2019-20 was 19969.65 MMSCM which is 6.27% and 2.99% lower than target for the period and production during corresponding period of last year respectively.

- Less Gas production from Vasistha/S1 wells in EOA and from DDW#5 in HPHT Asset.
- Non-realization of gas production planned from WO16 cluster due to unavailability of MOPU.
- Less than planned gas production from Bassein field and Daman Tapti Block due to higher than envisaged decline.
- Less gas off take by consumers.

2.2 Natural gas production by **OIL** during January, 2020 was 208.48 MMSCM which is 21.20% lower than monthly target and 6.21% lower than January, 2019. Cumulative

natural gas production by OIL during April-January, 2019-20 was 2255.85 MMSCM which is 19.39% and 1.19% lower than target for the period and production during corresponding period of last year respectively. Major reason for shortfall in production is less gas withdrawal by major customers owing to shutdown of their plants and bandh.

- 2.3** Natural gas production by **Pvt/JVs** during January, 2020 was 347.44 MMSCM which is 23.62% lower than monthly target and 22.69% higher than January, 2019. Cumulative natural gas production by Pvt/JVs during April-January, 2019 was 4201.73 MMSCM which is 7.50% and 9.10% lower than target for the period and production during corresponding period of last year respectively. Major reason for shortfall in production is less offtake by consumers and zone pressure depletions in some wells, water ingress issue and tubing damage in RJ-ON/6 (**FEL**).

3. Refinery Production (in terms of crude oil processed)

Refinery production during January, 2020 was 21679.19 TMT which is 2.86% lower than the target for the month and 1.21% lower when compared with January, 2019. Cumulative production during April-January, 2019-20 was 212064.08 TMT which is marginally higher by 0.54% than the target for the period but 1.19% lower than production during corresponding period of last year respectively. Unit-wise production is given at **Annexure-III**. Company-wise production for the month of January, 2020 and cumulatively for the period April-January, 2019-20 vis-à-vis same period of last year has been shown in Table-3 and month-wise in Figure-3.

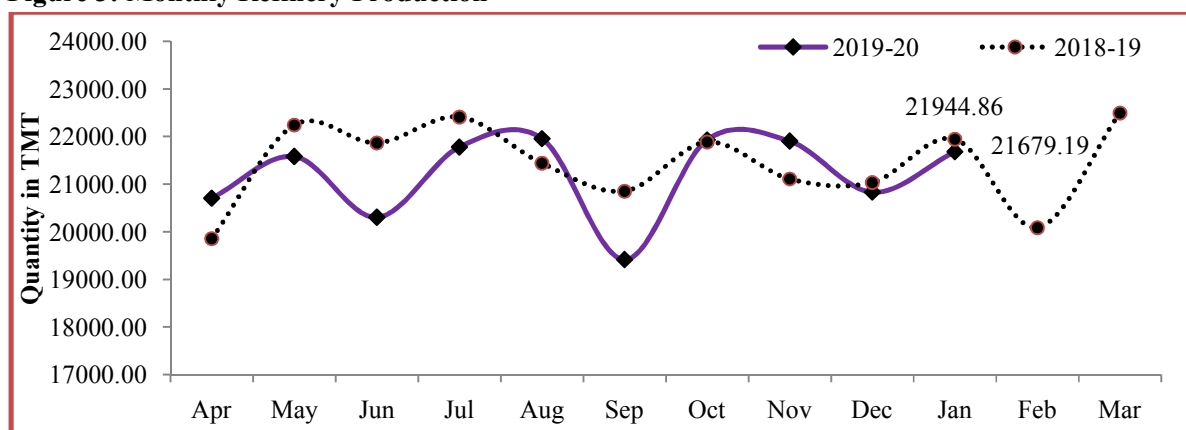
Table 3: Refinery Production (TMT)

Oil Company	Target	January (Month)				April-January (Cumulative)			
	2019-20 (Apr-Mar)	2019-20		2018-19	% over last year	2019-20		2018-19	% over last year
		Target	Prod.*	Prod.		Target	Prod.*	Prod.	
CPSE	147944.81	13608.73	12393.11	13144.64	94.28	121653.82	120285.43	126282.00	95.25
IOCL	71900.25	6612.47	5642.57	6171.76	91.43	59013.27	57959.01	60636.36	95.58
BPCL	30900.00	2725.00	2826.33	2753.47	102.65	25695.00	26166.09	25508.42	102.58
HPCL	16499.00	1598.00	1510.90	1508.65	100.15	13406.00	14150.26	15350.76	92.18
CPCL	10400.00	930.00	946.86	1003.96	94.31	8600.00	8572.12	8809.45	97.31
NRL	2799.80	259.10	151.52	240.00	63.13	2306.70	1911.00	2439.15	78.35
MRPL	15400.00	1480.00	1305.84	1459.31	89.48	12595.00	11452.22	13486.70	84.91
ONGC	45.76	4.16	9.10	7.50	121.30	37.86	74.75	51.17	146.08
JVs	18755.00	1588.00	1807.39	1679.39	107.62	15681.00	16776.48	14748.79	113.75
BORL	7800.00	660.00	706.46	717.78	98.42	6520.00	6527.48	4377.58	149.11
HMEL	10955.00	928.00	1100.93	961.61	114.49	9161.00	10249.00	10371.22	98.82
Private	88040.52	7120.83	7478.69	7120.83	105.03	73595.21	75002.17	73595.21	101.91
RIL	69145.00	5414.77	5726.64	5414.77	105.76	58069.35	57702.27	58069.35	99.37
EOL	18895.52	1706.06	1752.05	1706.06	102.70	15525.86	17299.90	15525.86	111.43
TOTAL	254740.32	22317.55	21679.19	21944.86	98.79	210930.02	212064.08	214626.00	98.81

Note: Totals may not tally due to rounding off.

*: Provisional

Figure 3: Monthly Refinery Production



3.1 CPSE Refineries' production during January, 2020 was 12393.11 TMT which is 8.93% lower than the target for the month and 5.72% lower when compared with January, 2019. Cumulative production by CPSE refineries during April-January, 2019-20 was 120285.43 TMT which is 1.12% and 4.75% lower than target for the period and production during corresponding period of last year respectively. Reasons for shortfall of refinery production in some CPSE refineries are as under:

1. IOCL-Guwahati, Mathura and Bongaigaon: Deferment of shutdown.
- 3 IOCL- Barauni: High DHT feed stock on account of lower SKO upliftment and Naphtha containment.
- 4 IOCL- Gujarat: High VR and DHDHT feed stock ; Lower Low NG & SG crude supply
- 5 IOCL- Haldia: Extension of CDU and HGU-2 revamp shutdown.
- 6 IOCL- Panipat: Marginally lower than plan due to high intermediate stocks.
- 7 HPCL-Mumbai: Lower due to Lube refinery Vacuum distillation unit shutdown.
- 8 NRL- Numaligarh: Lower due to refinery shutdown.
- 9 MRPL-Mangalore: Lower due to reduction in throughput on account of economics.

3.2 Production in JV refineries during January, 2020 was 1807.39 TMT which is 13.82% higher when compared with the production of January, 2019 and 7.62% higher than the target for the month. Cumulative production by JVs refineries during April-January, 2019-20 was 16776.48 TMT which is 6.99% and 13.75 higher than the target for the period and production during corresponding period of last year.

3.3 Production in private refineries during January, 2020 was 7478.69 TMT which is 5.03% higher than the target as well as corresponding month of last year. Cumulative production by private refineries during April-January, 2019-20 was 75002.17 TMT which is 1.91% higher than the target as well as corresponding period of last year.

3.4 Refinery-wise details of the capacity utilization and production of petroleum products during the month of January, 2020 and cumulatively for the period April-January, 2019-20 vis-à-vis April-January, 2018-19 are given at **Annexures - IV and V** respectively.

MINISTRY OF PETROLEUM & NATURAL GAS

Annexure-I (Para-1)

Crude Oil Production during the month of January, 2020 and cumulatively for the period April-January, 2019-20 vis-à-vis April-January, 2018-19

(Figures in Thousand Metric Tons)

Name of Undertaking/Unit/State	Planned production during the month	Production during the			Cumulative Production			% variation over last year		% variation during the month under review over planned production
		Month under review *	Corresponding month of last year	Preceding month of current year **	(April-January)			During the month under review	Upto the end of the period	
					Planned production during current year	Actual production during current year *	Actual production during corresponding period of last year			
(1)	(2)	(3)	(4)	(5)	(6)	(7)	(8)	(9)	(10)	(11)
1. ONGC	2011.29	1788.92	1766.98	1748.63	18172.50	17175.88	17675.14	1.24	-2.82	-11.06
Onshore	519.82	519.85	510.91	511.83	5123.91	5077.66	5078.51	1.75	-0.02	0.00
Andhra Pradesh	21.35	17.07	23.82	16.77	218.71	170.43	241.24	-28.34	-29.35	-20.02
Assam ^	91.09	86.24	84.25	81.23	850.40	819.35	837.40	2.36	-2.15	-5.32
Gujarat	383.95	387.01	375.27	385.28	3813.85	3814.58	3750.66	3.13	1.70	0.80
Tamil Nadu	23.44	29.53	27.56	28.55	240.96	273.29	249.22	7.15	9.66	25.99
Offshore	1491.47	1269.07	1256.07	1236.80	13048.59	12098.22	12596.63	1.03	-3.96	-14.91
Eastern Offshore	1.51	1.61	2.06	1.70	15.30	17.07	14.58	-21.80	17.10	6.94
Western Offshore	1340.96	1149.88	1127.22	1117.80	11710.03	10908.67	11330.73	2.01	-3.72	-14.25
Condensates	149.00	117.58	126.79	117.31	1323.26	1172.48	1251.32	-7.27	-6.30	-21.09
2. OIL (Onshore)	294.82	257.55	254.79	207.74	2854.11	2612.29	2771.35	1.08	-5.74	-12.64
Assam	292.24	254.51	253.80	205.05	2833.52	2586.98	2762.60	0.28	-6.36	-12.91
Arunachal Pradesh	2.40	2.16	0.68	1.64	18.75	18.76	6.47	215.79	189.81	-10.11
Rajsthan (heavy oil)	0.19	0.88	0.30	1.05	1.84	6.55	2.28	189.12	187.57	370.11
3. Private / JVC	775.25	650.30	825.90	694.44	7989.36	7284.17	8338.73	-21.26	-12.65	-16.12
Onshore	643.85	566.33	662.81	581.11	6582.51	6008.65	6738.49	-14.56	-10.83	-12.04
Andhra Pradesh	6.87	4.52	0.76	4.88	68.60	32.91	9.64	492.52	241.20	-34.31
Arunachal Pradesh	2.66	2.69	2.72	2.75	26.43	27.38	28.71	-1.10	-4.62	1.43
Assam	6.90	1.76	3.25	1.77	48.73	26.40	27.52	-45.90	-4.06	-74.47
Gujarat	31.71	11.87	10.76	11.45	307.00	111.27	112.73	10.31	-1.30	-62.57
Rajasthan	586.78	538.33	637.10	553.02	6049.66	5737.20	6482.96	-15.50	-11.50	-8.26
Tamil Nadu	8.94	7.17	8.21	7.25	82.09	73.50	76.93	-12.65	-4.46	-19.82
Offshore	131.40	83.97	163.09	113.33	1406.85	1275.51	1600.24	-48.51	-20.29	-36.10
Eastern Offshore	34.76	40.67	48.89	39.89	405.90	419.05	539.10	-16.82	-22.27	16.98
Gujarat Offshore	57.73	43.30	69.19	46.33	616.98	518.64	613.66	-37.41	-15.48	-24.99
Western Offshore	38.91	0.00	45.01	27.11	383.97	337.83	447.49	-100.00	-24.51	-100.00
GRAND TOTAL (1+2+3)	3081.37	2696.77	2847.66	2650.81	29015.97	27072.34	28785.22	-5.30	-5.95	-12.48
Onshore	1458.50	1343.73	1428.50	1300.68	14560.53	13698.60	14588.35	-5.93	-6.10	-7.87
Offshore	1622.87	1353.04	1419.16	1350.14	14455.44	13373.74	14196.88	-4.66	-5.80	-16.63

Note: Totals may not tally due to rounding off figures.

^: Includes crude oil production of Tripura

*: Provisional. **: Revised

Reasons for shortfall are indicated in the note.

MINISTRY OF PETROLEUM & NATURAL GAS

Annexure-II (Para-2)

Natural Gas Production during the month of January, 2020 and cumulatively for the period April-January, 2019-20 vis-à-vis April-January, 2018-19

(Figures in Million Cubic Meters)

Name of Undertaking/Unit/State	Planned production during the month	Production during the			Cumulative Production			% variation over last year		% variation during the month under review over planned production
		Month under review *	Corresponding month of last year	Preceding month of current year **	(April-January)			During the month under review	Upto the end of the period	
					Planned production during current year	Actual production during current year *	Actual production during corresponding period of last year			
(1)	(2)	(3)	(4)	(5)	(6)	(7)	(8)	(9)	(10)	(11)
1. ONGC	2293.55	2050.75	2169.77	1998.44	21304.67	19969.65	20586.02	-5.49	-2.99	-10.59
Onshore	521.29	429.45	480.06	431.64	5131.85	4396.93	4707.75	-10.54	-6.60	-17.62
Andhra Pradesh	84.45	75.81	91.49	78.00	837.59	754.63	907.87	-17.14	-16.88	-10.23
Assam	50.82	36.77	39.71	37.76	475.72	389.06	406.10	-7.40	-4.20	-27.65
Gujarat	96.22	109.48	111.80	110.57	1022.44	1070.44	1116.12	-2.07	-4.09	13.79
Rajasthan	5.39	0.00	0.00	0.00	53.24	0.00	4.31	-	-	-
Tamil Nadu	127.81	94.29	100.07	93.55	1220.39	896.06	992.06	-5.78	-9.68	-26.23
Tripura	156.60	113.10	136.99	111.76	1522.46	1286.74	1281.29	-17.44	0.43	-27.78
Offshore	1772.26	1621.30	1689.71	1566.81	16172.82	15572.72	15878.27	-4.05	-1.92	-8.52
Eastern Offshore	102.61	55.69	121.75	79.10	996.40	840.88	826.86	-54.26	1.70	-45.72
Western Offshore	1669.65	1565.60	1567.96	1487.71	15176.42	14731.84	15051.40	-0.15	-2.12	-6.23
2. OIL	264.57	208.48	222.29	195.57	2798.39	2255.85	2283.08	-6.21	-1.19	-21.20
Assam	245.27	184.77	200.05	170.45	2607.93	2016.92	2086.06	-7.64	-3.31	-24.67
Arunachal Pradesh	1.09	3.70	0.62	3.73	10.71	29.54	10.49	501.11	181.47	241.29
Rajasthan	18.21	20.00	21.62	21.38	179.75	209.39	186.52	-7.47	12.26	9.85
3. Private / JVC	454.91	347.44	449.40	416.44	4542.32	4201.73	4622.56	-22.69	-9.10	-23.62
Onshore	193.92	205.75	144.84	180.24	1756.40	1697.62	1399.11	42.05	21.34	6.10
Andhra Pradesh	4.03	1.76	0.31	1.69	37.23	11.77	3.93	467.10	199.82	-56.36
Arunachal Pradesh	0.65	0.51	1.17	0.74	6.48	6.43	13.55	-56.66	-52.54	-21.85
Assam	40.41	16.54	30.18	16.87	362.37	264.21	259.71	-45.18	1.73	-59.06
Gujarat	9.17	6.07	5.79	5.91	91.19	57.52	59.42	4.84	-3.20	-33.82
Rajasthan	136.41	178.08	105.04	152.31	1229.51	1332.49	1041.57	69.54	27.93	30.55
Tamil Nadu	3.26	2.79	2.36	2.71	29.63	25.20	20.94	18.21	20.37	-14.33
CBM	106.84	55.63	62.15	52.98	863.30	540.71	596.63	-10.48	-9.37	-47.93
Jharkhand (CBM)	0.56	0.30	0.45	0.36	5.57	4.11	2.71	-33.78	51.49	-47.16
Madhya Pradesh (CBM)	59.80	29.42	30.92	29.20	443.00	286.46	300.21	-4.86	-4.58	-50.81
West Bengal (CBM)	46.48	25.92	30.78	23.42	414.73	250.14	293.70	-15.78	-14.83	-44.23
Offshore	154.14	86.06	242.41	183.22	1922.63	1963.41	2626.82	-64.50	-25.26	-44.17
Eastern Offshore	35.18	76.54	95.69	84.34	742.10	814.40	1244.70	-20.01	-34.57	117.59
Gujarat Offshore	13.88	9.51	12.95	10.56	143.25	110.31	98.77	-26.52	11.69	-31.44
Western Offshore	105.09	0.00	133.77	88.31	1037.28	1038.69	1283.35	0.00	-19.06	0.00
TOTAL (1+2+3)	3013.03	2606.67	2841.45	2610.45	28645.38	26427.23	27491.66	-8.26	-3.87	-13.49
CBM	106.84	55.63	62.15	52.98	863.30	540.71	596.63	-10.48	-9.37	-47.93
Onshore	979.78	843.68	847.19	807.45	9686.64	8350.39	8389.95	-0.41	-0.47	-13.89
Offshore	1926.40	1707.36	1932.11	1750.02	18095.44	17536.13	18505.09	-11.63	-5.24	-11.37

Note: Totals may not tally due to rounding off figures.

*: Provisional. **: Revised

CBM: Coal Bed Methane production.

Reasons for shortfall are indicated in the note.

MINISTRY OF PETROLEUM & NATURAL GAS

Annexure-III (Para-3)

Crude Oil Processed during the month of January, 2020 and cumulatively for the period April-January, 2019-20 vis-à-vis April-January, 2018-19

(Figures in Thousand Metric Tons)

Name of Undertaking/Unit	Planned production during the month	Production during the			Cumulative Production			% variation		% variation during the month under review over planned production
		Month under review *	Corresponding month of last year	Preceding month of current year **	(April-January)			During the month under review	Upto the end of the period	
					Planned production during current year**	Actual production during current year *	Actual production during corresponding period of last year			
(1)	(2)	(3)	(4)	(5)	(6)	(7)	(8)	(9)	(10)	(11)
A. Public Sector	13608.73	12393.11	13144.64	11662.07	121653.82	120285.43	126282.00	-5.72	-4.75	-8.93
1. IOC, Guwahati	0.00	82.95	0.00	87.21	786.00	839.98	707.10	0.00	18.79	0.00
2. IOC, Barauni	620.45	556.91	586.38	573.00	5633.84	5462.48	5519.86	-5.03	-1.04	-10.24
3. IOC, Gujarat	1317.50	1262.30	1182.87	1299.23	10950.38	10678.85	11449.26	6.72	-6.73	-4.19
4. IOC, Haldia	734.08	339.85	617.38	376.05	5829.50	5352.08	6616.73	-44.95	-19.11	-53.70
5. IOC, Mathura	837.00	430.70	722.63	82.81	7249.00	7417.36	8097.59	-40.40	-8.40	-48.54
6. IOC, Digboi	58.00	61.69	56.47	48.50	560.00	548.82	564.97	9.23	-2.86	6.35
7. IOC, Panipat	1418.20	1395.11	1384.22	1401.98	12904.00	12490.07	13679.87	0.79	-8.70	-1.63
8. IOC, Bongaigaon	248.00	108.32	240.64	65.00	1870.00	1819.84	2072.94	-54.99	-12.21	-56.32
9. IOC, Paradip	1379.24	1404.75	1381.17	1429.69	13230.53	13349.52	11928.06	1.71	11.92	1.85
Total IOC	6612.47	5642.57	6171.76	5363.46	59013.27	57959.01	60636.36	-8.57	-4.42	-14.67
10. BPCL, Mumbai	1300.00	1373.07	1236.25	1343.61	12240.00	12387.90	12221.29	11.07	1.36	5.62
11. BPCL, Kochi	1425.00	1453.25	1517.21	1410.18	13455.00	13778.19	13287.13	-4.22	3.70	1.98
Total BPCL	2725.00	2826.33	2753.47	2753.80	25695.00	26166.09	25508.42	2.65	2.58	3.72
12. HPCL, Mumbai	767.00	680.04	674.33	582.08	5801.00	6628.90	7203.50	0.85	-7.98	-11.34
13. HPCL, Visakh	831.00	830.86	834.31	664.09	7605.00	7521.36	8147.26	-0.41	-7.68	-0.02
Total HPCL	1598.00	1510.90	1508.65	1246.17	13406.00	14150.26	15350.76	0.15	-7.82	-5.45
14. CPCL, Manali	930.00	946.86	958.19	936.78	8600.00	8572.12	8456.98	-1.18	1.36	1.81
15. CPCL, CBR	0.00	0.00	45.77	0.00	0.00	0.00	352.47	-	-	-
Total CPCL	930.00	946.86	1003.96	936.78	8600.00	8572.12	8809.45	-5.69	-2.69	1.81
16. NRL, Numaligarh	259.10	151.52	240.00	0.00	2306.70	1911.00	2439.15	-36.87	-21.65	-41.52
17. MRPL, Mangalore	1480.00	1305.84	1459.31	1354.75	12595.00	11452.22	13486.70	-10.52	-15.09	-11.77
18. ONGC, Tatipaka	4.16	9.10	7.50	7.10	37.86	74.75	51.17	21.30	46.08	118.65
B. Joint Venture	1588.00	1807.39	1679.39	1827.67	15681.00	16776.48	14748.79	7.62	13.75	13.82
19. BORL, Bina	660.00	706.46	717.78	717.45	6520.00	6527.48	4377.58	-0.11	49.11	7.04
20. HMEL, GGSR, Bhatinda	928.00	1100.93	961.61	1110.23	9161.00	10249.00	10371.22	14.49	-1.18	18.63
C. Private Sector	7120.83	7478.69	7120.83	7340.11	73595.21	75002.17	73595.21	5.03	1.91	5.03
21. RIL, Jamnagar	2211.45	3076.99	2211.45	2840.32	26927.48	27123.72	26927.48	39.14	0.73	39.14
22. RIL, SEZ	3203.32	2649.64	3203.32	2794.83	31141.87	30578.55	31141.87	-17.28	-1.81	-17.28
Total RIL	5414.77	5726.64	5414.77	5635.15	58069.35	57702.27	58069.35	5.76	-0.63	5.76
23. EOL, Vadinar	1706.06	1752.05	1706.06	1704.96	15525.86	17299.90	15525.86	2.70	11.43	2.70
TOTAL(A+B+C)	22317.55	21679.19	21944.86	20829.85	210930.02	212064.08	214626.00	-1.21	-1.19	-2.86

Note: 1. Totals may not tally due to rounding off figures. *: Provisional. **: Revised

2. CPCL CBR crude distillation unit under shutdown from 01.04.2019 for project activities.

Reasons for shortfall are indicated in the note.

MINISTRY OF PETROLEUM & NATURAL GAS

Annexure-IV (Para 3.4)

Refinery-wise Capacity Utilisation during the month of January, 2020 and cumulatively for the period April-January, 2019-20 vis-à-vis April-January, 2018-19

(Figures in Thousand Metric Tons)

Name of Undertaking/Unit	January, 2020			January, 2019			Cumulative (April - January)					
	Prorated Installed Capacity	Actual Crude T'put *	% Utilisation of Installed Capacity	Prorated Installed Capacity	Actual Crude T'put	% Utilisation of Installed Capacity	2019-20			2018-19		
							Prorated Installed Capacity	Actual Crude T'put *	% Utilisation of Installed Capacity	Prorated Installed Capacity	Actual Crude T'put	% Utilisation of Installed Capacity
(1)	(2)	(3)	(4)	(5)	(6)	(7)	(8)	(9)	(10)	(11)	(12)	(13)
A. Public Sector	12066.00	12393.11	102.71	12066.00	13144.64	108.94	118776.00	120285.43	101.27	119102.00	126282.00	106.03
1. IOC, Guwahati	85.00	82.95	97.59	85.00	0.00	0.00	836.00	839.98	100.48	838.00	707.10	84.38
2. IOC, Barauni	510.00	556.91	109.20	510.00	586.38	114.98	5016.00	5462.48	108.90	5030.00	5519.86	109.74
3. IOC, Gujarat	1164.00	1262.30	108.44	1164.00	1182.87	101.62	11454.00	10678.85	93.23	11485.00	11449.26	99.69
4. IOC, Haldia	637.00	339.85	53.35	637.00	617.38	96.92	6270.00	5352.08	85.36	6288.00	6616.73	105.23
5. IOC, Mathura	679.00	430.70	63.43	679.00	722.63	106.43	6689.00	7417.36	110.89	6707.00	8097.59	120.73
6. IOC, Digboi	55.00	61.69	112.15	55.00	56.47	102.67	543.00	548.82	101.07	545.00	564.97	103.66
7. IOC, Panipat	1274.00	1395.11	109.51	1274.00	1384.22	108.65	12541.00	12490.07	99.59	12575.00	13679.87	108.79
8. IOC, Bongaigaon	200.00	108.32	54.16	200.00	240.64	120.32	1965.00	1819.84	92.61	1970.00	2072.94	105.23
9. IOC, Paradip	1274.00	1404.75	110.26	1274.00	1381.17	0.00	12541.00	13349.52	106.45	12575.00	11928.06	0.00
Total IOC	5877.00	5642.57	96.01	5877.00	6171.76	105.02	57856.00	57959.01	100.18	58014.00	60636.36	104.52
10. BPCL, Mumbai	1019.00	1373.07	134.75	1019.00	1236.25	121.32	10033.00	12387.90	123.47	10060.00	12221.29	121.48
11. BPCL, Kochi	1316.00	1453.25	110.43	1316.00	1517.21	115.29	12959.00	13778.19	106.32	12995.00	13287.13	102.25
Total BPCL	2336.00	2826.33	120.99	2336.00	2753.47	117.87	22992.00	26166.09	113.81	23055.00	25508.42	110.64
12. HPCL, Mumbai	637.00	680.04	106.76	637.00	674.33	105.86	6270.00	6628.90	105.72	6288.00	7203.50	114.56
13. HPCL, Visakh	705.00	830.86	117.85	705.00	834.31	118.34	6939.00	7521.36	108.39	6958.00	8147.26	117.09
Total HPCL	1342.00	1510.90	112.59	1342.00	1508.65	112.42	13210.00	14150.26	107.12	13246.00	15350.76	115.89
14. CPCL, Manali	892.00	946.86	106.15	892.00	958.19	107.42	8779.00	8572.12	97.64	8803.00	8456.98	96.07
15. CPCL, CBR	85.00	0.00	0.00	85.00	45.77	53.85	836.00	0.00	0.00	838.00	352.47	42.06
Total CPCL	977.00	946.86	96.92	977.00	1003.96	102.76	9615.00	8572.12	89.15	9641.00	8809.45	91.37
16. NRL, Numaligarh	255.00	151.52	59.42	255.00	240.00	94.12	2508.00	1911.00	76.20	2515.00	2439.15	96.98
17. MRPL, Mangalore	1274.00	1305.84	102.50	1274.00	1459.31	114.55	12541.00	11452.22	91.32	12575.00	13486.70	107.25
18. ONGC, Tatipaka	6.00	9.10	151.60	6.00	7.50	124.98	55.00	74.75	135.91	55.00	51.17	93.03
B. Joint Venture	1622.00	1807.39	111.43	1469.00	1679.39	114.32	15969.00	16776.48	105.06	14504.00	14748.79	101.69
19. BORL, Bina	662.00	706.46	106.72	510.00	717.78	140.74	6521.00	6527.48	100.10	5030.00	4377.58	87.03
20. HMEL, GGSR, Bhatinda	960.00	1100.93	114.68	960.00	961.61	100.17	9448.00	10249.00	108.48	9473.00	10371.22	109.48
C. Private Sector	7491.00	7478.69	99.84	7491.00	7120.83	95.06	73741.00	75002.17	101.71	73943.00	73595.21	99.53
21. RIL, Jamnagar	2803.00	3076.99	109.78	2803.00	2211.45	78.90	27590.00	27123.72	98.31	27666.00	26927.48	97.33
22. RIL, SEZ	2990.00	2649.64	88.62	2990.00	3203.32	107.13	29430.00	30578.55	103.90	29510.00	31141.87	105.53
Total RIL	5792.00	5726.64	98.87	5792.00	5414.77	93.49	57020.00	57702.27	101.20	57176.00	58069.35	101.56
23. EOL, Vadinar	1699.00	1752.05	103.12	1699.00	1706.06	100.42	16721.00	17299.90	103.46	16767.00	15525.86	92.60
TOTAL(A+B+C)	21179.00	21679.19	102.36	21026.00	21944.86	104.37	208486.00	212064.08	101.72	207548.00	214626.00	103.41

Note: Crude throughput in terms of crude oil processed. *: Provisional. **: Revised

MINISTRY OF PETROLEUM & NATURAL GAS

Annexure-V (Para 3.4)

Production of Petroleum Products during the month of January, 2020 and cumulatively for the period April-January, 2019-20 vis-à-vis April-January, 2018-19

(Figures in Thousand Metric Tons)

Name of Undertaking/Unit	Planned production during the month	Production during the			Cumulative Production			% variation over last year		% variation during the month under review over planned production
		Month under review *	Corresponding month of last year	Preceding month of current year **	(April-January)			During the month under review	Upto the end of the period	
Planned production during current year**	Actual production during current year*				Actual production during corresponding period of last year					
(1)	(2)	(3)	(4)	(5)	(6)	(7)	(8)	(9)	(10)	(11)
A. Public Sector	12888.69	11777.85	12496.53	11117.10	114614.98	113564.34	119729.63	-5.75	-5.15	-8.62
1. IOC, Guwahati	0.00	107.15	25.41	103.69	802.45	1024.27	864.88	321.70	18.43	0.00
2. IOC, Barauni	558.37	555.68	561.88	570.47	5183.27	5038.08	5196.13	-1.10	-3.04	-0.48
3. IOC, Gujarat	1261.37	1287.86	1151.75	1257.65	10478.73	10152.77	10880.07	11.82	-6.68	2.10
4. IOC, Haldia	691.24	309.32	559.65	298.91	5329.55	4899.23	6173.51	-44.73	-20.64	-55.25
5. IOC, Mathura	827.78	406.23	714.22	129.02	6977.82	7203.62	7950.78	-43.12	-9.40	-50.93
6. IOC, Digboi	71.99	62.09	56.46	48.69	690.78	544.83	569.01	9.97	-4.25	-13.75
7. IOC, Panipat	1461.76	1432.40	1435.34	1436.33	12995.97	12691.05	14087.37	-0.20	-9.91	-2.01
8. IOC, Bongaigaon	232.57	77.71	218.99	27.07	1723.51	1674.08	1923.31	-64.52	-12.96	-66.59
9. IOC, Paradip	1259.35	1256.04	1236.78	1271.25	12081.35	12050.33	10786.11	1.56	11.72	-0.26
Total IOC	6364.44	5494.48	5960.48	5143.08	56263.43	55278.26	58431.15	-7.82	-5.40	-13.67
10. BPCL, Mumbai	1248.00	1342.87	1167.42	1317.66	11730.00	11951.05	11739.46	15.03	1.80	7.60
11. BPCL, Kochi	1329.97	1419.74	1398.61	1398.56	12590.33	13045.47	12420.05	1.51	5.04	6.75
Total BPCL	2577.97	2762.61	2566.03	2716.22	24320.33	24996.52	24159.50	7.66	3.46	7.16
12. HPCL, Mumbai	731.00	624.29	627.68	551.20	5483.00	6303.36	6813.93	-0.54	-7.49	-14.60
13. HPCL, Visakh	768.00	742.00	746.46	676.07	7032.00	6846.65	7574.21	-0.60	-9.61	-3.39
Total HPCL	1499.00	1366.29	1374.13	1227.28	12515.00	13150.01	14388.14	-0.57	-8.61	-8.85
14. CPCL, Manali	839.45	863.87	881.62	855.19	7745.99	7846.43	7626.84	-2.01	2.88	2.91
15. CPCL, CBR	0.00	0.00	45.79	0.00	0.00	0.88	354.15	-	-	-
Total CPCL	839.45	863.87	927.41	855.19	7745.99	7847.31	7981.00	-6.85	-1.68	2.91
16. NRL, Numaligarh	253.83	130.83	237.33	4.14	2261.59	1833.03	2416.72	-44.87	-24.15	-48.46
17. MRPL, Mangalore	1350.00	1152.48	1424.07	1164.31	11472.23	10390.40	12304.22	-19.07	-15.55	-14.63
18. ONGC, Tatipaka	4.00	7.29	7.08	6.90	36.40	68.81	48.90	2.98	40.72	82.15
B. Joint Venture	1459.18	1684.08	1576.30	1656.54	14412.96	15674.19	13811.36	6.84	13.49	15.41
19. BORL, Bina	587.18	645.25	615.74	642.14	5802.96	5958.81	3906.53	4.79	52.53	9.89
20. HMEL, GGSR, Bhatinda	872.00	1038.83	960.56	1014.40	8610.00	9715.38	9904.84	8.15	-1.91	19.13
C. Private Sector	7840.41	8897.23	7840.41	8910.70	81383.53	84993.43	81383.53	13.48	4.44	13.48
21. RIL, Jamnagar	2348.14	3249.80	2348.14	3067.57	28322.61	28868.09	28322.61	38.40	1.93	38.40
22. RIL, SEZ	3733.01	3908.52	3733.01	4209.83	38176.14	39525.89	38176.14	4.70	3.54	4.70
Total RIL	6081.15	7158.33	6081.15	7277.40	66498.75	68393.99	66498.75	17.71	2.85	17.71
23. EOL, Vadinar	1759.26	1738.90	1759.26	1633.30	14884.78	16599.45	14884.78	-1.16	11.52	-1.16
TOTAL REFINERY (A+B+C)	22188.29	22359.16	21913.24	21684.34	210411.46	214231.96	214924.52	2.03	-0.32	0.77
ONGC	295.66	293.44	307.82	297.31	2801.41	2898.79	2970.24	-4.67	-2.41	-0.75
GAIL	98.84	97.58	111.42	111.28	1016.44	1060.80	1102.00	-12.41	-3.74	-1.27
OIL	3.30	2.99	3.02	1.09	27.70	23.48	27.56	-0.93	-14.79	-9.48
D. Total Fractionators	397.80	394.01	422.25	409.68	3845.55	3983.07	4099.80	-6.69	-2.85	-0.95
Grand Total (A+B+C+D)	22586.09	22753.18	22335.49	22094.01	214257.02	218215.03	219024.31	1.87	-0.37	0.74

Note: Totals may not tally due to rounding off figures. *: Provisional. **: Revised