

Government of India
Ministry of Petroleum and Natural Gas
Economic & Statistics Division

New Delhi
Dated the 24th April, 2019

Monthly Production Report
March, 2019

1. Crude Oil

Crude oil production¹ during March, 2019 was 2854.32 TMT which is 12.99 % lower than target and 6.16% lower when compared with March, 2018. Cumulative crude oil production during April-March, 2018-19 was 34203.27 TMT which is 7.59% and 4.15% lower than the cumulative target and production respectively during the corresponding period of last year. Unit-wise and State-wise crude oil production is given at **Annexure-I**. Unit-wise crude oil production for the month of March, 2019 and cumulatively for the period April-March, 2018-19 vis-à-vis same period of last year has been shown in Table-1 and month-wise in Figure-1.

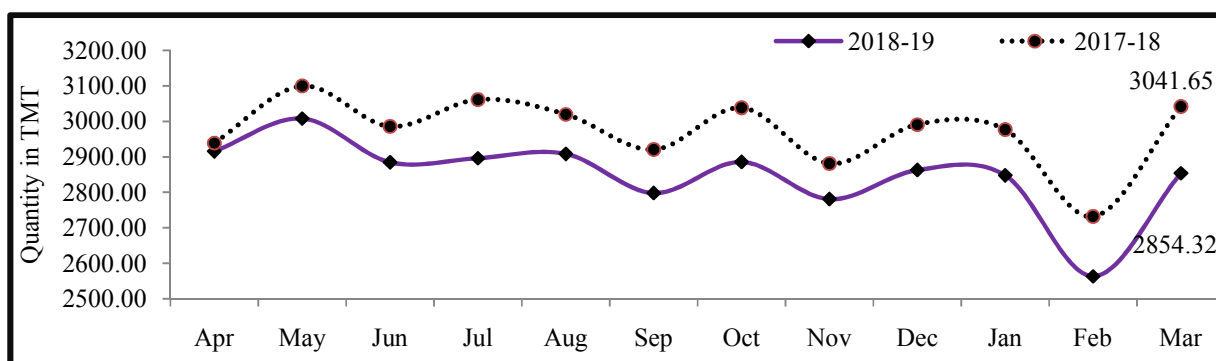
Table-1: Crude Oil Production (in TMT)

Oil Company	Target	March(Month)				April-March (Cumulative)			
	2018-19 (Apr-Mar)	2018-19		2017-18	% over last year	2018-19		2017-18	% over last year
		Target	Prod.*	Prod.		Target	Prod.*	Prod.	
ONGC	23040.00	2066.46	1768.17	1879.17	94.09	23040.00	21042.11	22249.12	94.58
OIL	3738.00	340.94	278.10	281.52	98.78	3738.00	3293.13	3376.28	97.54
PSC Fields	10233.60	872.91	808.04	880.96	91.72	10233.60	9868.02	10058.94	98.10
Total	37011.60	3280.32	2854.32	3041.65	93.84	37011.60	34203.27	35684.33	95.85

Note: Totals may not tally due to rounding off.

*: Provisional

Figure-1: Monthly Crude Oil Production



¹Including condensate

Unit-wise production details with reasons for shortfall are as under:

1.1 Crude oil production by **ONGC** during March, 2019 was 1768.17 TMT which is 14.43% lower than the monthly target and 5.91% lower when compared with March, 2018. Cumulative crude oil production by ONGC during April-March, 2018-19 was 21042.11 TMT which is 8.67% and 5.42% lower than the cumulative target and production respectively during the corresponding period of last year. Reasons for shortfall are as under:

- Electric submersible pump (ESP) problem in some wells of NBP field.
- Loss from WO-16 fields in the absence of MOPU Sagar Samrat.
- Sub-sea leakage in some well fluid lines of Mumbai High & Neelam Heera Asset, leading to flow restriction.
- Less than envisaged production due to reduced EOR effect in Santhal and Balol fields in Mehsana. Air injection rates under optimization.
- Less than planned realisation from development wells in Geleki & Demualgaon fields in Assam Asset.

1.2 Crude oil production by **OIL** during March, 2019 was 278.10 TMT which is 18.43% lower than monthly target and 1.22% lower when compared with March, 2018. Cumulative crude oil production by OIL during April-March, 2018-19 was 3293.13 TMT which is 11.90% and 2.46% lower than the cumulative target and production respectively during the corresponding period of last year. Reasons for shortfall are as under:

- Loss from bandh and miscreant activities in operational areas.
- Less than planned contribution from work over well and drilling wells.

1.3 Crude oil production by **Pvt/JVs** in PSC regime during March, 2019 was 808.04 TMT which is 7.43% lower than the monthly target and 8.28% lower than March, 2018. Cumulative crude oil production by Pvt/JVs during April-March, 2018-19 was 9868.02 TMT which is 3.57 % and 1.90% lower than the cumulative target and production respectively during the corresponding period of last year. Major reasons in for lower production are;

- Loss from Mangala due to delay in upgrade of Mangala Processing Terminal (MPT) and delay in drilling, completion and hooking up online 45 infill wells (CEIL).
- Lower yield from NE development drilling campaign due to geological uncertainties (CEIL).
- Closure of around 100 oil wells due to various reasons like liquid handling constraint at MPT plant, pump failure, surface facility limitation, etc (CEIL).

2. Natural Gas

Natural gas production during March, 2019 was 2815.96 MMSCM which is 1.20% higher when compared with March, 2018 although 8.99% lower than the target for the month. Cumulative natural gas production during April-March, 2018-19 was 32873.37 MMSCM which is marginally higher by 0.69% when compared with the production during corresponding

period of last year, however is lower by 7.66% than target for the period. Unit-wise and state-wise natural gas production is given at **Annexure-II**. Unit-wise natural gas production for the month of March, 2019 and cumulatively for the period April-March, 2018-19 vis-à-vis same period of last year has been shown in Table-2 and month-wise in Figure-2.

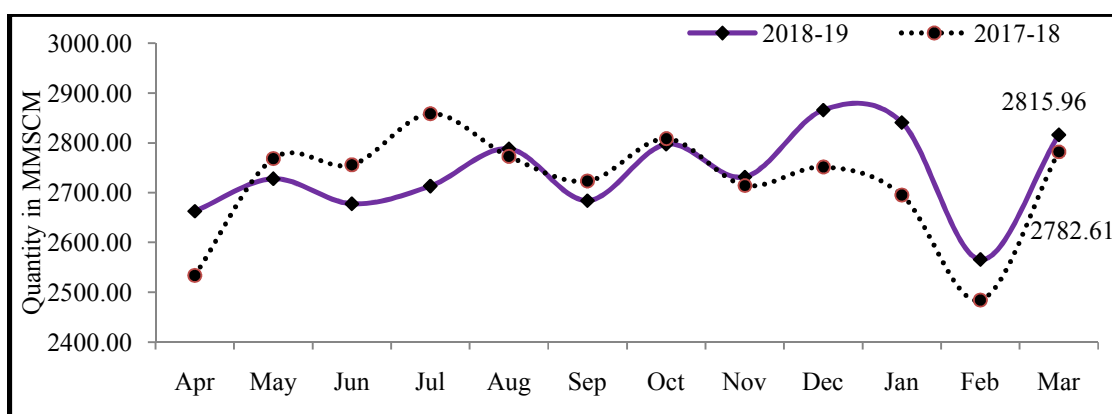
Table-2: Natural Gas Production (MMSCM)

Oil Company	Target	March (Month)				April-March (Cumulative)			
	2018-19 (Apr-Mar)	2018-19		2017-18	% over last year	2018-19		2017-18	% over last year
		Target	Prod.*	Prod.		Target	Prod.*	Prod.	
ONGC	25981.00	2236.50	2134.89	2013.61	106.02	25981.00	24674.65	23429.47	105.31
OIL	3120.06	260.62	235.12	236.73	99.32	3120.06	2721.90	2881.50	94.46
PSC Fields	6498.11	596.91	445.95	532.28	83.78	6498.11	5476.82	6338.34	86.41
Total	35599.17	3094.03	2815.96	2782.61	101.20	35599.17	32873.37	32649.31	100.69

Note: Totals may not tally due to rounding off.

*: Provisional

Figure-2: Monthly Natural Gas Production



2.1 Natural gas production by **ONGC** during March, 2019 was 2134.89 MMSCM which is 6.02% higher when compared with March, 2018 although 4.54% lower than the target for the month. Cumulative natural gas production by ONGC during April-March, 2018-19 was 24674.65 MMSCM which is 5.31% higher than the production during the corresponding period of the last year but 5.03% lower than the cumulative target. Some of the reasons for lower production viz monthly target is decline in pressure/potential in GS-4 Gas cap reservoir in Gandhar field.

2.2 Natural gas production by **OIL** during March, 2019 was 235.12 MMSCM which is 9.79% lower than the monthly target and 0.68% lower than March, 2018. Cumulative natural gas production by OIL during April-March, 2018-19 was 2721.90 MMSCM which is 12.76% and 5.54% lower than the cumulative target and production respectively during the corresponding period of last year. Reasons for shortfall are as under:

- Loss of potential in Deohal area due to presence of CO₂ in production stream.

- Loss from bandh and miscreant activities in operational areas.

2.3 Natural gas production by **Pvt/JVs** during March, 2019 was 445.95 MMSCM which is 25.29% lower than the monthly target and 16.22 % lower when compared with March, 2018. Cumulative natural gas production by Pvt/JVs during April-March, 2018-19 was 5476.82 MMSCM which is 15.72% lower than the cumulative target and 13.59% lower than the production during the corresponding period of last year. Reasons for shortfall in production are as under:

- Sohagpur West CBM Block: Increase in number of wells requiring workover due to sanding, scaling and resultant pump replacement requirement etc. 36 development wells which are still under dewatering phase and gas breakout is yet to be seen. (RIL)
- Closure of 2 wells in D1D3 field.
- Loss from Mangala due to delay in upgrade of Mangala Processing Terminal (MPT) and delay in drilling, completion and hooking up online 45 infill wells and lower inputs from NE development drilling campaign (CEIL).

3. Refinery Production (in terms of crude oil processed)

Refinery production during March, 2019 was 22495.43 TMT which is higher 6.51% when compared with March, 2018 and 8.18% higher than the target for the month. Cumulative production during April-March, 2018-19 was 257204.86 TMT which is 1.30% and 2.09% higher than the cumulative target and production respectively during the corresponding period of last year. Unit-wise production is given at **Annexure-III**. Company-wise production for the month of March, 2019 and cumulatively for the period April-March, 2018-19 vis-à-vis same period of last year has been shown in Table-3 and month-wise in Figure-3.

Figure 3: Monthly Refinery Production

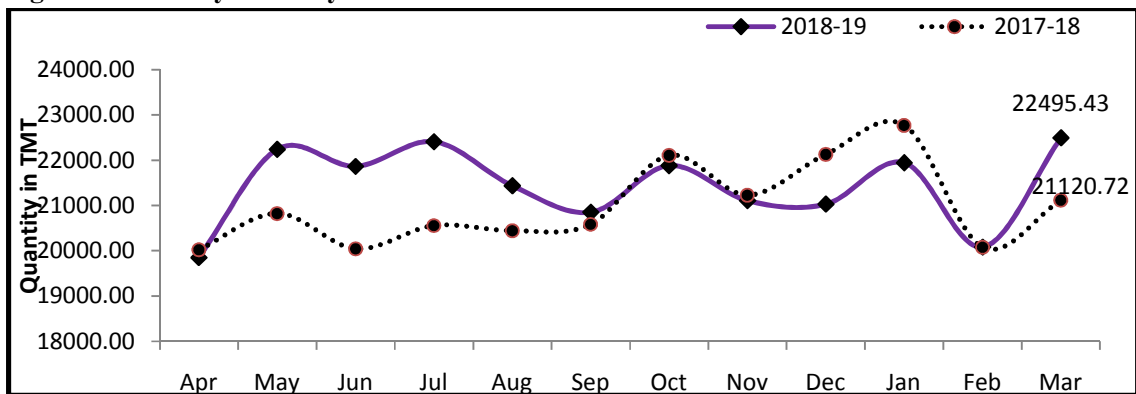


Table 3: Refinery Production (TMT)

Oil Company	Target	March (Month)				April-March (Cumulative)			
	2018-19 (Apr-Mar)	2018-19		2017-18	% over last year	2018-19		2017-18	% over last year
		Target	Prod.*	Prod.		Target	Prod.*	Prod.	
CPSE	147759	12220.90	12753.95	12526.86	101.81	147759.38	150975.66	145233.78	103.95
IOCL	71150	5641.85	5659.69	5596.81	101.12	71149.92	71815.86	69001.16	104.08
BPCL	29000	2478.24	2793.05	2664.19	104.84	29000.00	30823.44	28148.65	109.50
HPCL	18000	1553.57	1627.30	1590.60	102.31	18000.46	18444.07	18276.18	100.92
CPCL	10500	850.00	1003.88	981.97	102.23	10500.00	10694.70	10789.01	99.13
NRL	2850	242.05	246.10	217.34	113.23	2850.00	2900.39	2809.43	103.24
MRPL	16200	1450.00	1416.01	1469.45	96.36	16200.00	16231.05	16129.77	100.63
ONGC	59	5.18	7.93	6.50	122.03	59.00	66.16	79.58	83.13
JVs	17240	1583.00	1797.56	1534.05	117.18	17240.00	18188.69	15538.10	117.06
BORL	6400	660.00	702.78	569.16	123.48	6400.00	5715.88	6707.90	85.21
HMEL	10840	923.00	1094.78	964.88	113.46	10840.00	12472.80	8830.20	141.25
Private	88896	6990.52	7943.93	7059.82	112.52	88896.05	88040.52	91162.93	96.57
RIL	70470	5274.52	6153.91	5274.52	116.67	70470.05	69145.00	70470.05	98.12
NEL	18426	1716.00	1790.01	1785.29	100.26	18426.00	18895.52	20692.88	91.31
TOTAL	253895	20794.42	22495.43	21120.72	106.51	253895.43	257204.86	251934.80	102.09

Note: Totals may not tally due to rounding off.

*: Provisional

3.1 **CPSE Refineries' production** during March, 2019 was 12753.95 TMT which is 4.36% higher than the monthly target and 1.81% higher when compared with March, 2018. Cumulative production by CPSE refineries during April-March, 2018-19 was 150975.66 TMT which is 2.18% and 3.95% higher than the cumulative target and production respectively during the corresponding period of last year. Reasons for shortfall of refinery production in some CPSE refineries are as under:

- IOCL-Guwahati: Lower due to high RCO stocks due to Delayed coker Unit(DCU)& Indmax Unit shutdown.
- IOCL-Gujarat: Lower due to M&I shut down.
- MRPL: Limitation in CDU III unit ejector-condensor.

3.2 **Production in JV refineries** during March, 2019 was 1797.56 TMT which is 13.55% higher than the target for the month and 17.18% higher when compared with March, 2018. Cumulative production by JVs refineries during April-March, 2018-19 was 18188.69 TMT which is 5.50% and 17.06% higher than the cumulative target and production respectively during the corresponding period of last year.

3.3 **Production in private refineries** during March, 2019 was 7943.93 TMT which is higher by 13.64% than the target for the month and 12.52% higher when compared with March, 2018. Cumulative production by private refineries during April-March, 2018-19 was 88040.52 TMT which is 0.96% and 3.43% lower than the cumulative target and production respectively during the corresponding period of last year.

3.4 Refinery-wise details of the capacity utilization and production of petroleum products during the month of March, 2019 and cumulatively for the period April-March, 2018-19 vis-à-vis April-March, 2017-18 are given at **Annexures - IV and V** respectively.

MINISTRY OF PETROLEUM & NATURAL GAS

Annexure-I (Para 1)

Crude Oil Production during the month of March, 2019 and cumulatively for the period April-March, 2018-19 vis-à-vis April-March, 2017-18

(Qty: '000' Tonnes)

Name of Undertaking/Unit/State	Planned production during the month*	Production during the			Cumulative Production			% variation over last year		% variation during the month under review over planned production
		Month under review *	Corresponding month of last year **	Preceding month of current year **	(April-March)			During the month under review	Upto the end of the period	
					Planned production during current year*	Actual production during current year *	Actual production during corresponding period of last year **			
(1)	(2)	(3)	(4)	(5)	(6)	(7)	(8)	(9)	(10)	(11)
1. ONGC	2066.46	1768.17	1879.17	1598.79	23040.00	21042.11	22249.12	-5.91	-5.42	-14.43
Onshore	528.06	528.19	516.73	466.81	6131.77	6073.51	6009.59	2.22	1.06	0.03
Andhra Pradesh	23.39	22.64	26.74	21.05	318.25	284.93	321.55	-15.31	-11.39	-3.20
Assam ^	97.47	80.92	82.70	74.80	1057.19	993.12	974.57	-2.15	1.90	-16.98
Gujarat	388.32	396.21	384.36	345.41	4535.74	4492.28	4451.62	3.08	0.91	2.03
Tamil Nadu	18.87	28.42	22.94	25.55	220.58	303.19	261.86	23.89	15.78	50.60
Offshore	1538.41	1239.98	1362.44	1131.98	16908.23	14968.60	16239.53	-8.99	-7.83	-19.40
Eastern Offshore	0.62	2.05	0.78	1.83	8.16	18.46	8.34	163.77	121.26	229.08
Western Offshore	1412.61	1117.57	1221.32	1016.75	15473.57	13465.06	14777.09	-8.50	-8.88	-20.89
Condensates	125.17	120.36	140.34	113.40	1426.51	1485.08	1454.09	-14.23	2.13	-3.85
2. OIL (Onshore)	340.94	278.10	281.52	243.68	3738.00	3293.13	3376.28	-1.22	-2.46	-18.43
Assam	339.57	276.16	280.83	242.80	3726.78	3281.55	3367.34	-1.67	-2.55	-18.68
Arunachal Pradesh	1.19	1.48	0.59	0.65	9.02	8.60	7.36	152.56	16.89	24.89
Rajsthan (heavy oil)	0.19	0.47	0.11	0.24	2.20	2.98	1.58	336.11	88.21	149.40
3. Private / JVC	872.91	808.04	880.96	721.25	10233.60	9868.02	10058.94	-8.28	-1.90	-7.43
Onshore	749.36	653.16	712.78	577.45	8590.33	7969.09	8153.85	-8.36	-2.27	-12.84
Andhra Pradesh	8.25	0.73	0.00	0.83	62.66	11.20	0.00	459.38	-	-91.11
Arunachal Pradesh	3.87	2.89	3.30	2.52	44.67	34.11	42.91	-12.66	-20.52	-25.46
Assam	3.53	3.62	0.90	3.31	41.61	34.45	3.09	20.80	-	2.29
Gujarat	39.70	10.83	12.69	9.90	270.00	133.46	139.35	-14.71	-4.23	-72.73
Rajasthan	683.59	627.04	689.37	553.82	8048.68	7663.81	7885.34	-9.04	-2.81	-8.27
Tamil Nadu	10.42	8.06	6.52	7.07	122.71	92.06	83.15	23.66	10.73	-22.66
Offshore	123.55	154.88	168.18	143.80	1643.27	1898.93	1905.09	-7.91	-0.32	25.36
Eastern Offshore	42.37	51.17	63.97	45.61	580.96	635.88	818.76	-20.01	-22.34	20.77
Gujarat Offshore	43.52	62.72	46.20	59.23	547.01	735.61	399.12	35.78	84.31	44.12
Western Offshore	37.66	40.99	58.02	38.96	515.30	527.44	687.20	-29.34	-23.25	8.85
GRAND TOTAL (1+2+3)	3280.32	2854.32	3041.65	2563.73	37011.60	34203.27	35684.33	-6.16	-4.15	-12.99
Onshore	1618.36	1459.45	1511.03	1287.94	18460.09	17335.74	17539.72	-3.41	-1.16	-9.82
Offshore	1661.96	1394.87	1530.62	1275.78	18551.51	16867.53	18144.61	-8.87	-7.04	-16.07

Note: Totals may not tally due to rounding off figures.

^: Includes crude oil production of Tripura

*: Provisional. **: Revised

Reasons for shortfall are indicated in the note.

MINISTRY OF PETROLEUM & NATURAL GAS

Annexure-II (Para 2)

Natural Gas Production during the month of March, 2019 and cumulatively for the period April-March, 2018-19 vis-à-vis April-March, 2017-18

(Qty: Million Cubic Meters)

Name of Undertaking/Unit/State	Planned production during the month*	Production during the			Cumulative Production (April-March)			% variation over last year		% variation during the month under review over planned production
		Month under review *	Corresponding month of last year **	Preceding month of current year **	Planned production during current year*	Actual production during current year *	Actual production during corresponding period of last year **	During the month under review	Upto the end of the period	
(1)	(2)	(3)	(4)	(5)	(6)	(7)	(8)	(9)	(10)	(11)
1. ONGC	2236.50	2134.89	2013.61	1953.74	25981.00	24674.65	23429.47	6.02	5.31	-4.54
Onshore	487.87	485.75	490.44	439.36	5818.07	5632.86	5638.30	-0.96	-0.10	-0.44
Andhra Pradesh	84.10	87.54	102.65	81.32	1061.06	1076.72	959.16	-14.72	12.26	4.08
Assam	45.48	39.70	42.84	36.82	491.60	482.63	507.98	-7.32	-4.99	-12.70
Gujarat	119.84	113.76	115.65	102.52	1503.18	1332.40	1531.57	-1.63	-13.00	-5.07
Rajasthan	0.48	0.00	0.71	0.00	5.60	4.31	5.56	-	-22.44	-
Tamil Nadu	96.26	99.37	103.85	91.07	1152.66	1182.49	1193.67	-4.31	-0.94	3.23
Tripura	141.71	145.38	124.73	127.64	1603.97	1554.30	1440.37	16.55	7.91	2.59
Offshore	1748.63	1649.14	1523.17	1514.38	20162.93	19041.78	17791.16	8.27	7.03	-5.69
Eastern Offshore	179.36	104.41	43.70	105.47	2035.12	1036.74	548.22	138.94	89.11	-41.79
Western Offshore	1569.27	1544.73	1479.47	1408.91	18127.81	18005.04	17242.94	4.41	4.42	-1.56
2. OIL	260.62	235.12	236.73	203.70	3120.06	2721.90	2881.50	-0.68	-5.54	-9.79
Assam	241.28	212.72	217.30	183.14	2892.28	2481.93	2658.53	-2.11	-6.64	-11.83
Arunachal Pradesh	1.09	1.07	0.98	0.68	12.78	12.24	11.57	9.25	5.80	-1.66
Rajasthan	18.26	21.33	18.45	19.88	215.00	227.74	211.41	15.59	7.72	16.82
3. Private / JVC	596.91	445.95	532.28	408.31	6498.11	5476.82	6338.34	-16.22	-13.59	-25.29
Onshore	249.67	155.20	134.25	136.72	2072.78	1691.03	1384.08	15.61	22.18	-37.84
Andhra Pradesh	3.96	0.31	0.00	0.35	27.69	4.58	0.00	0.00	0.00	-92.12
Arunachal Pradesh	30.72	0.65	2.01	1.37	126.52	15.57	17.95	-67.77	-13.23	-97.89
Assam	0.84	34.19	12.80	30.60	245.10	324.50	52.52	-	-	-
Gujarat	9.55	5.32	5.58	5.08	97.01	69.82	75.09	-4.69	-7.02	-44.25
Rajasthan	201.87	112.38	112.66	97.26	1544.35	1251.20	1224.97	-0.25	2.14	-44.33
Tamil Nadu	2.73	2.35	1.20	2.07	32.12	25.36	13.55	96.37	87.15	-13.85
CBM	132.68	58.10	70.42	55.74	1562.19	710.46	734.80	-17.50	-3.31	-56.21
Jharkhand (CBM)	0.36	0.45	0.22	0.42	4.20	3.58	3.96	101.49	-9.69	26.51
Madhya Pradesh (CBM)	79.26	29.46	32.46	26.99	933.28	356.66	199.77	-9.24	78.54	-62.83
West Bengal (CBM)	53.06	28.19	37.73	28.34	624.71	350.22	531.07	-25.30	-34.05	-46.87
Offshore	214.56	232.65	327.61	215.85	2863.14	3075.32	4219.46	-28.99	-27.12	8.43
Eastern Offshore	63.47	90.13	157.88	87.36	1114.90	1422.19	2268.52	-42.91	-37.31	42.00
Gujarat Offshore	15.71	12.09	7.57	11.37	169.27	122.23	97.69	59.76	25.12	-23.04
Western Offshore	135.38	130.43	162.17	117.13	1578.97	1530.90	1853.25	-19.57	-17.39	-3.66
TOTAL (1+2+3)	3094.03	2815.96	2782.61	2565.75	35599.17	32873.37	32649.31	1.20	0.69	-8.99
CBM	132.68	58.10	70.42	55.74	1562.19	710.46	734.80	-17.50	-3.31	-56.21
Onshore	998.16	876.07	861.41	779.78	11010.91	10045.80	9903.88	1.70	1.43	-12.23
Offshore	1963.19	1881.79	1850.78	1730.23	23026.07	22117.10	22010.62	1.68	0.48	-4.15

Note: Totals may not tally due to rounding off figures.

*: Provisional. **: Revised

CBM: Coal Bed Methane production.

Reasons for shortfall are indicated in the note.

MINISTRY OF PETROLEUM & NATURAL GAS

Annexure-III (Para 3)

Crude Oil Processed during the month of March, 2019 and cumulatively for the period April-March, 2018-19 vis-à-vis April-March, 2017-18

(Qty: '000' Tonnes)

Name of Undertaking/Unit	Planned production during the month*	Production during the			Cumulative Production			% variation over last year		% variation during the month under review over planned production
		Month under review *	Corresponding month of last year	Preceding month of current year **	(April-March)			During the month under	Upto the end of the period	
					Planned production during current year*	Actual production during current year *	Actual production during corresponding period of last year **			
(1)	(2)	(3)	(4)	(5)	(6)	(7)	(8)	(9)	(10)	(11)
A. Public Sector	12220.90	12753.95	12526.86	11939.71	147759.38	150975.66	145233.78	1.81	3.95	4.36
1. IOC, Guwahati	90.00	81.19	89.47	74.88	1050.00	863.17	1023.68	-9.26	-15.68	-9.79
2. IOC, Barauni	565.89	595.73	600.77	545.60	6500.00	6661.19	5818.63	-0.84	14.48	5.27
3. IOC, Gujarat	1271.00	980.99	1255.57	1074.67	13599.99	13504.92	13811.32	-21.87	-2.22	-22.82
4. IOC, Haldia	710.00	709.30	697.33	638.83	8050.00	7964.86	7655.49	1.72	4.04	-0.10
5. IOC, Mathura	806.00	866.57	868.11	772.38	9300.00	9736.54	9240.21	-0.18	5.37	7.51
6. IOC, Digboi	56.00	61.52	62.57	49.03	650.00	675.52	665.62	-1.68	1.49	9.86
7. IOC, Panipat	659.90	710.68	1417.85	889.97	15399.90	15280.52	15654.18	-49.88	-2.39	7.70
8. IOC, Bongaigaon	186.85	225.51	218.56	214.33	2200.00	2512.77	2401.59	3.18	4.63	20.69
9. IOC, Paradip	1296.21	1428.20	386.57	1260.13	14400.03	14616.39	12730.44	269.45	14.81	10.18
Total IOC	5641.85	5659.69	5596.81	5519.81	71149.92	71815.86	69001.16	1.12	4.08	0.32
10. BPCL, Mumbai	1079.86	1371.14	1267.97	1180.29	13500.00	14772.72	14054.06	8.14	5.11	26.97
11. BPCL, Kochi	1398.38	1421.91	1396.22	1341.68	15500.00	16050.72	14094.60	1.84	13.88	1.68
Total BPCL	2478.24	2793.05	2664.19	2521.97	29000.00	30823.44	28148.65	4.84	9.50	12.70
12. HPCL, Mumbai	729.57	770.59	740.20	696.84	8450.11	8670.93	8641.17	4.11	0.34	5.62
13. HPCL, Visakh	824.00	856.71	850.40	769.17	9550.35	9773.14	9635.01	0.74	1.43	3.97
Total HPCL	1553.57	1627.30	1590.60	1466.01	18000.46	18444.07	18276.18	2.31	0.92	4.75
14. CPCL, Manali	850.00	942.03	932.91	872.33	10200.00	10271.33	10288.83	0.98	-0.17	10.83
15. CPCL, CBR	0.00	61.85	49.06	9.05	300.00	423.37	500.18	26.06	-15.36	-
Total CPCL	850.00	1003.88	981.97	881.38	10500.00	10694.70	10789.01	2.23	-0.87	18.10
16. NRL, Numaligarh	242.05	246.10	217.34	215.15	2850.00	2900.39	2809.43	13.23	3.24	1.67
17. MRPL, Mangalore	1450.00	1416.01	1469.45	1328.34	16200.00	16231.05	16129.77	-3.64	0.63	-2.34
18. ONGC, Tatipaka	5.18	7.93	6.50	7.057	59.00	66.16	79.58	22.03	-16.87	53.03
B. Joint Venture	1583.00	1797.56	1534.05	1642.33	17240.00	18188.69	15538.10	17.18	17.06	13.55
19. BORL, Bina	660.00	702.78	569.16	635.53	6400.00	5715.88	6707.90	23.48	-14.79	0.00
20. HMEI, GGSR, Bhatinda	923.00	1094.78	964.88	1006.81	10840.00	12472.80	8830.20	13.46	41.25	18.61
C. Private Sector	6990.52	7943.93	7059.82	6501.38	88896.05	88040.52	91162.93	12.52	-3.43	13.64
21. RIL, Jamnagar	2847.82	2849.72	2847.82	1974.95	33152.75	31752.15	33152.75	0.07	-4.22	0.07
22. RIL, SEZ	2426.71	3304.19	2426.71	2946.79	37317.30	37392.85	37317.30	36.16	0.20	36.16
Total RIL	5274.52	6153.91	5274.52	4921.74	70470.05	69145.00	70470.05	16.67	-1.88	16.67
23. NEL, Vadinar	1716.00	1790.01	1785.29	1579.65	18426.00	18895.52	20692.88	0.26	-8.69	4.31
TOTAL(A+B+C)	20794.42	22495.43	21120.72	20083.43	253895.43	257204.86	251934.80	6.51	2.09	8.18

Note: Totals may not tally due to rounding off figures. *: Provisional. **:Revised

Reasons for shortfall are indicated in the note.

MINISTRY OF PETROLEUM & NATURAL GAS

Annexure-IV (Para 3.4)

Refinery-wise Capacity Utilisation during the month of March, 2019 and cumulatively for the period April-March, 2018-19 vis-à-vis April-March, 2017-18

(Qty: '000' Tonnes)

Name of Undertaking/Unit	March, 2019			March, 2018			Cumulative (April - March)					
	Prorated Installed Capacity	Actual Crude T'put *	% Utilisation of Installed Capacity	Prorated Installed Capacity	Actual Crude T'put	% Utilisation of Installed Capacity	2018-19			2017-18		
							Prorated Installed Capacity	Actual Crude T'put *	% Utilisation of Installed Capacity	Prorated Installed Capacity	Actual Crude T'put **	% Utilisation of Installed Capacity
(1)	(2)	(3)	(4)	(5)	(6)	(7)	(8)	(9)	(10)	(11)	(12)	(13)
A. Public Sector	12066.00	12753.95	105.70	11805.00	12526.86	106.11	142066.00	150975.66	106.27	138996.00	145233.78	104.49
1. IOC, Guwahati	85.00	81.19	95.52	85.00	89.47	105.26	1000.00	863.17	86.32	1000.00	1023.68	102.37
2. IOC, Barauni	510.00	595.73	116.81	510.00	600.77	117.80	6000.00	6661.19	111.02	6000.00	5818.63	96.98
3. IOC, Gujarat	1164.00	980.99	84.28	1164.00	1255.57	107.87	13700.00	13504.92	98.58	13700.00	13811.32	100.81
4. IOC, Haldia	637.00	709.30	111.35	637.00	697.33	109.47	7500.00	7964.86	106.20	7500.00	7655.49	102.07
5. IOC, Mathura	679.00	866.57	127.62	679.00	868.11	127.85	8000.00	9736.54	121.71	8000.00	9240.21	115.50
6. IOC, Digboi	55.00	61.52	111.85	55.00	62.57	113.77	650.00	675.52	103.93	650.00	665.62	102.40
7. IOC, Panipat	1274.00	710.68	55.78	1274.00	1417.85	111.29	15000.00	15280.52	101.87	15000.00	15654.18	104.36
8. IOC, Bongaigaon	200.00	225.51	112.75	200.00	218.56	109.28	2350.00	2512.77	106.93	2350.00	2401.59	102.20
9. IOC, Paradip	1274.00	1428.20	112.10	1274.00	386.57	30.34	15000.00	14616.39	97.44	15000.00	12730.44	84.87
Total IOC	5877.00	5659.69	96.30	5877.00	5596.81	95.23	69200.00	71815.86	103.78	69200.00	69001.16	99.71
10. BPCL, Mumbai	1019.00	1371.14	134.56	1019.00	1267.97	124.43	12000.00	14772.72	123.11	12000.00	14054.06	117.12
11. BPCL, Kochi	1316.00	1421.91	108.05	1053.00	1396.22	132.59	15500.00	16050.72	103.55	12400.00	14094.60	113.67
Total BPCL	2336.00	2793.05	119.57	2072.00	2664.19	128.58	27500.00	30823.44	112.09	24400.00	28148.65	115.36
12. HPCL, Mumbai	637.00	770.59	120.97	637.00	740.20	116.20	7500.00	8670.93	115.61	7500.00	8641.17	115.22
13. HPCL, Visakh	705.00	856.71	121.52	707.00	850.40	120.28	8300.00	9773.14	117.75	8330.00	9635.01	115.67
Total HPCL	1342.00	1627.30	121.26	1344.00	1590.60	118.35	15800.00	18444.07	116.73	15830.00	18276.18	115.45
14. CPCL, Manali	892.00	942.03	105.61	892.00	932.91	104.59	10500.00	10271.33	97.82	10500.00	10288.83	97.99
15. CPCL, CBR	85.00	61.85	72.76	85.00	49.06	57.72	1000.00	423.37	42.34	1000.00	500.18	50.02
Total CPCL	977.00	1003.88	102.75	977.00	981.97	100.51	11500.00	10694.70	93.00	11500.00	10789.01	93.82
16. NRL, Numaligarh	255.00	246.10	96.51	255.00	217.34	246.10	3000.00	2900.39	96.68	3000.00	2809.43	93.65
17. MRPL, Mangalore	1274.00	1416.01	111.15	1274.00	1469.45	115.34	15000.00	16231.05	108.21	15000.00	16129.77	107.53
18. ONGC, Tatipaka	6.00	7.93	132.17	6.00	6.50	108.31	66.00	66.16	100.24	66.00	79.58	120.58
B. Joint Venture	1469.00	1797.56	122.37	1274.00	1534.05	120.41	17300.00	18188.69	105.14	15000.00	15538.10	103.59
19. BORL, Bina	510.00	702.78	137.80	510.00	569.16	111.60	6000.00	5715.88	95.26	6000.00	6707.90	111.80
20. HMEL, GGSR, Bhatinda	960.00	1094.78	114.04	764.00	964.88	126.29	11300.00	12472.80	110.38	9000.00	8830.20	98.11
C. Private Sector	7491.00	7943.93	106.05	6795.00	7059.82	103.90	88200.00	88040.52	99.82	80000.00	91162.93	113.95
21. RIL, Jamnagar	2803.00	2849.72	101.67	2803.00	2847.82	101.60	33000.00	31752.15	96.22	33000.00	33152.75	100.46
22. RIL, SEZ	2990.00	3304.19	110.51	2293.00	2426.71	105.83	35200.00	37392.85	106.23	27000.00	37317.30	138.21
Total RIL	5792.00	6153.91	106.25	5096.00	5274.52	103.50	68200.00	69145.00	101.39	60000.00	70470.05	117.45
23. NEL, Vadinar	1699.00	1790.01	105.36	1699.00	1785.29	105.08	20000.00	18895.52	94.48	20000.00	20692.88	103.46
TOTAL(A+B+C)	21026.00	22495.43	106.99	19874.00	21120.72	106.27	247566.00	257204.86	103.89	233996.00	251934.80	107.67

Note: Crude throughput in terms of crude oil processed. *: Provisional. **: Revised

MINISTRY OF PETROLEUM & NATURAL GAS

Annexure-V (Para 3.4)

Production of Petroleum Products during the month of March, 2019 and cumulatively for the period April-March, 2018-19 vis-à-vis April-March, 2017-18

(Qty: '000' Tonnes)

Name of Undertaking/Unit	Planned production during the month*	Production during the			Cumulative Production			% variation over last year		% variation during the month under review over planned production
		Month under review *	Corresponding month of last year	Preceding month of current year **	(April-March)			During the month under review	Upto the end of the period	
(1)	(2)	(3)	(4)	(5)	(6)	(7)	(8)			(9)
I. Refinery										
A. Public Sector	11443.68	12187.30	12125.17	11330.51	138522.24	143247.44	137835.42	0.51	3.93	6.50
1. IOC, Guwahati	86.66	90.37	98.40	74.98	1014.21	1030.23	1141.86	-8.16	-9.78	4.28
2. IOC, Barauni	526.62	573.55	561.28	506.74	6072.14	6276.41	5507.43	2.19	13.96	8.91
3. IOC, Gujarat	1178.04	960.58	1216.92	1066.99	12529.34	12907.64	13271.45	-21.06	-2.74	-18.46
4. IOC, Haldia	648.81	672.20	672.57	604.66	7414.91	7450.36	7166.82	-0.06	3.96	3.60
5. IOC, Mathura	790.71	857.10	866.91	751.84	8959.14	9559.72	9150.81	-1.13	4.47	8.40
6. IOC, Digboi	56.43	60.81	62.10	45.68	639.79	675.51	665.42	-2.08	1.52	7.78
7. IOC, Panipat	699.73	702.59	1488.30	987.02	15661.83	15776.97	15888.74	-52.79	-0.70	0.41
8. IOC, Bongaigaon	171.21	213.61	213.36	200.57	2016.00	2337.49	2241.29	0.12	4.29	24.76
9. IOC, Paradip	1170.45	1288.02	365.81	1155.51	12982.44	13229.64	11446.83	252.10	15.57	10.04
Total IOC	5328.66	5418.82	5545.66	5394.00	67289.80	69243.97	66480.65	-2.29	4.16	1.69
10. BPCL, Mumbai	1038.77	1321.71	1236.50	1132.01	12990.38	14193.17	13638.18	6.89	4.07	27.24
11. BPCL, Kochi	1302.49	1458.34	1299.25	1270.75	14412.81	15149.13	13307.31	12.24	13.84	11.97
Total BPCL	2341.25	2780.05	2535.76	2402.75	27403.19	29342.30	26945.49	9.63	8.90	18.74
12. HPCL, Mumbai	683.28	741.88	731.62	646.05	7922.88	8201.86	8126.30	1.40	0.93	8.58
13. HPCL, Visakh	762.24	793.86	789.72	727.15	8831.93	9095.22	8900.95	0.53	2.18	4.15
Total HPCL	1445.52	1535.75	1521.34	1373.20	16754.81	17297.08	17027.24	0.95	1.58	6.24
14. CPCL, Manali	768.17	860.70	854.81	766.00	9215.04	9253.54	9331.07	0.69	-0.83	12.05
15. CPCL, CBR	0.00	61.51	48.16	9.70	303.60	425.37	501.95	27.72	-15.26	-
Total CPCL	768.17	922.22	902.98	775.70	9518.64	9678.91	9833.02	2.13	-1.57	20.05
16. NRL, Numaligarh	236.33	247.04	234.58	217.92	2782.62	2881.68	2823.49	5.31	2.06	4.53
17. MRPL, Mangalore	1318.74	1276.17	1378.50	1160.29	14716.19	14740.68	14650.16	-7.42	0.62	-3.23
18. ONGC, Tatipaka	5.01	7.25	6.37	6.66	57.00	62.81	75.37	13.90	-16.66	44.90
B. Joint Venture	1460.76	1666.07	1427.98	1432.23	16011.00	16909.66	14463.81	16.67	16.91	14.05
19. BORL, Bina	584.76	632.11	524.29	574.09	5724.20	5112.72	6093.66	20.57	-16.10	8.10
20. HMEL, GGSR, Bhatinda	876.00	1033.96	903.69	858.14	10286.80	11796.93	8370.15	14.41	40.94	18.03
C. Private Sector	8020.11	8714.73	8067.94	7174.71	95419.38	97272.96	97497.51	8.02	-0.23	8.66
21. RIL, Jamnagar	3024.15	2976.13	3024.15	2034.95	33561.22	33333.68	33561.22	-1.59	-0.68	-1.59
22. RIL, SEZ	3347.63	4034.84	3347.63	3549.98	44178.16	45760.96	44178.16	20.53	3.58	20.53
Total RIL	6371.78	7010.97	6371.78	5584.92	77739.38	79094.64	77739.38	10.03	1.74	10.03
23. NEL, Vadinar	1648.33	1703.76	1696.16	1589.78	17680.00	18178.32	19758.13	0.45	-8.00	3.36
TOTAL(A+B+C)	20924.55	22568.09	21621.09	19937.45	249952.63	257430.06	249796.74	4.38	3.06	7.85
II. Fractionators										
ONGC	277.61	320.89	313.70	281.51	3225.66	3572.64	3295.89	2.29	8.40	15.59
GAIL	110.00	124.07	124.57	98.78	1188.40	1324.84	1278.00	-0.40	3.67	12.79
OIL	3.20	3.30	3.40	2.87	36.00	33.73	34.11	-3.00	-1.11	3.09
D. Total Fractionators	390.81	448.26	441.66	383.16	4450.06	4931.21	4607.99	1.49	7.01	14.70
Grand Total (A+B+C+D)	21315.36	23016.35	22062.75	20320.61	254402.69	262361.27	254404.74	4.32	3.13	7.98

Note: Totals may not tally due to rounding off figures.

*: Provisional. **: Revised