

Government of India
Ministry of Petroleum and Natural Gas
Economic & Statistics Division

New Delhi
Dated the 21st January, 2020

Monthly Production Report
December, 2019

Crude Oil

➤ **Crude oil production¹** during December, 2019 was 2650.81 TMT which is 10.85% lower than target and 7.39% lower when compared with December 2018. Cumulative crude oil production during April-December, 2019 was 24375.57 TMT which is 6.01% and 6.02% lower than target for the period and production during corresponding period of last year respectively. Unit-wise and State-wise crude oil production is given at **Annexure-I**. Unit-wise crude oil production for the month of December, 2019 and cumulatively for the period April-December, 2019 vis-à-vis same period of last year has been shown in Table-1 and month-wise in Figure-1.

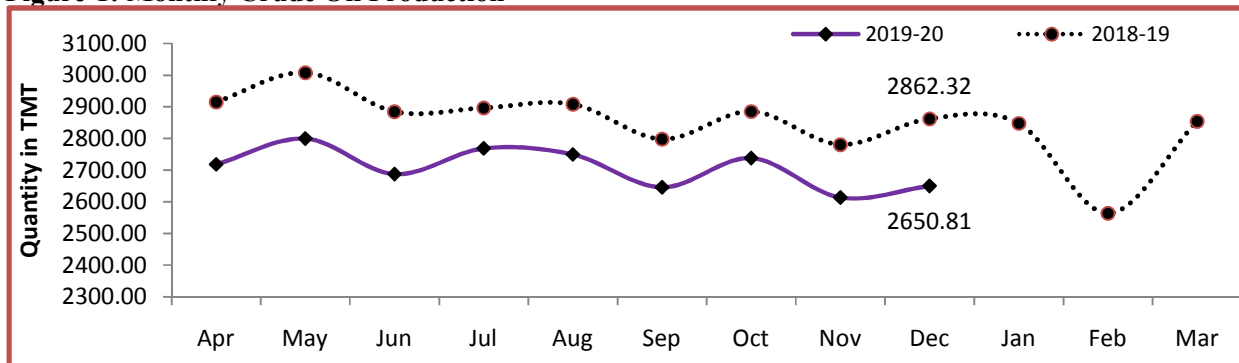
Table-1: Crude Oil Production (in TMT)

Oil Company	Target	December (Month)				April-December (Cumulative)			
		2019-20		2018-19	% over last year	2019-20		2018-19	% over last year
		Target	Prod.*	Prod.		Target	Prod.*	Prod.	
ONGC	22153.90	1985.59	1748.63	1761.22	99.29	16161.21	15386.96	15908.16	96.72
OIL	3424.90	294.75	207.74	274.93	75.56	2559.29	2354.74	2516.56	93.57
PSC Fields	9463.34	693.02	694.44	826.17	84.06	7214.10	6633.87	7512.84	88.30
Total	35042.15	2973.36	2650.81	2862.32	92.61	25934.60	24375.57	25937.56	93.98

Note: Totals may not tally due to rounding off.

*: Provisional

Figure-1: Monthly Crude Oil Production



¹Including condensate

Unit-wise production details with reasons for shortfall are as under:

1.1 Crude oil production by **ONGC** during December, 2019 was 1748.63 TMT which is 11.93% lower than the target and 0.71% lower when compared with December, 2018. Cumulative crude oil production by ONGC during April-December, 2019 was 15386.96 TMT which is 4.79% and 3.28% lower than target for the period and production during corresponding period of last year respectively.

- Non realization of production from WO-16 cluster due to unavailability of MOPU.
- ESP issues in wells of NBP field and Ratna R-series.
- Less production from B-127 Cluster due to increase in water cut.
- Increase in water cut in certain wells of Mumbai High, Heera, Neelam & B173A.
- Disruption in field activities in Assam due to protests.

1.2 Crude oil production by **OIL** during December, 2019 was 207.74 TMT which is 29.52% lower than monthly target and 24.44% lower when compared with December, 2018. Cumulative crude oil production by OIL during April-December, 2019 was 2354.74 TMT which is 7.99% and 6.43% lower than target for the period and production during corresponding period of last year respectively. Major reasons for Disruption in field activities in Assam due to protests.

1.3 Crude oil production by **Pvt/JVs** during December, 2019 was 694.44 TMT which is marginally higher by 0.20% than the monthly target and 15.94% lower than December, 2018. Cumulative crude oil production by Pvt/JVs during April-December, 2019 was 6633.87 TMT which is 8.04% and 11.70% lower than target for the period and production during corresponding period of last year respectively. Reasons for shortfall in production are as under:

- RJ-ON-90/1-MANGLA (CEIL): Delay in making 45 FM-1/4 infill wells on line. Lag in liquidating the inventory of planned workover and production optimization jobs. ESP failure in FM-3 well M-357, M-359 and M-387.
- Operational issues in Bhagyam, Aishwarya and ABH fields. (CEIL)
- CB-ONN-2005/9 (Mercator): Oil production from Jyoti-1 is stopped. Well closed for long term pressure build up study and could not be put back in production due to non-grant of EC for development campaign.

Natural Gas

- **Natural gas production** during December, 2019 was 2640.80 MMSCM which is 11.13% lower than the monthly target and 7.87% lower when compared with December, 2018. Cumulative natural gas production during April-December, 2019 was 23850.36 MMSCM which is 6.95% and 3.24% lower than target for the period and production during

corresponding period of last year respectively. Unit-wise and state-wise natural gas production is given at **Annexure-II**. Unit-wise natural gas production for the month of December, 2019 and cumulatively for the period April-December, 2019 vis-à-vis same period of last year has been shown in Table-2 and month-wise in Figure-2.

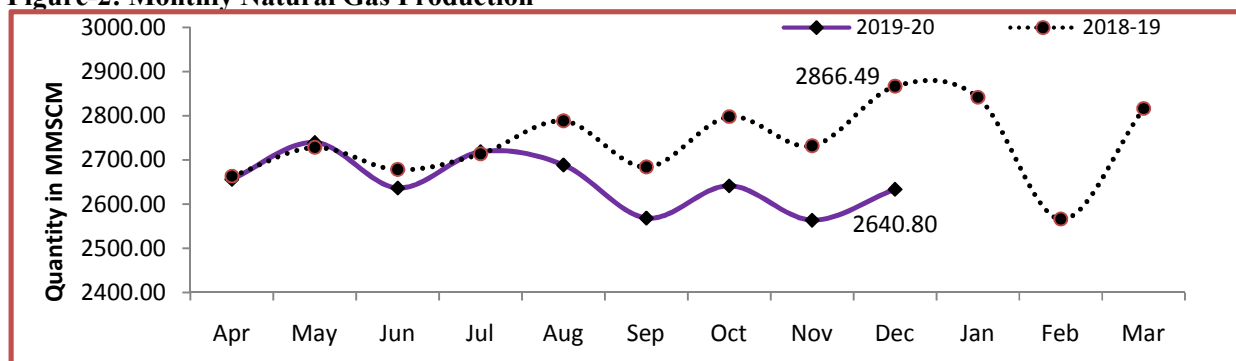
Table-2: Natural Gas Production (MMSCM)

Oil Company	Target	December (Month)				April-December (Cumulative)			
	2019-20 (Apr-Mar)	2019-20		2018-19	% over last year	2019-20		2018-19	% over last year
		Target	Prod.*	Prod.		Target	Prod.*	Prod.	
ONGC	25848.00	2260.13	1998.37	2196.99	90.96	19011.12	17918.28	18416.25	97.30
OIL	3309.59	273.53	225.98	232.65	97.13	2533.82	2077.79	2060.79	100.82
PSC Fields	5395.20	437.76	416.44	436.86	95.33	4087.42	3854.29	4173.16	92.36
Total	34552.79	2971.43	2640.80	2866.49	92.13	25632.36	23850.36	24650.21	96.76

Note: Totals may not tally due to rounding off.

*: Provisional

Figure-2: Monthly Natural Gas Production



2.1 Natural gas production by **ONGC** during December, 2019 was 1998.37 MMSCM which is 11.58% lower than target and 9.04% lower when compared with December 2018. Cumulative natural gas production by ONGC during April-December, 2019 was 17918.28 MMSCM which is 5.75% and 2.70% lower than target for the period and production during corresponding period of last year respectively.

- Non-realization of gas production planned from WO16 cluster from Dec'19 in absence of MOPU.
- Less Gas production from Vasistha/S1 wells in EOA due to sand incursion issues.
- Less production due to less gas off take by OTPC, Tripura.
- Disruption in field activities in Assam due to protests.
- Less gas off take by gas consumers.

2.2 Natural gas production by **OIL** during December, 2019 was 225.98 MMSCM which is 17.38% lower than monthly target and 2.87% lower than December, 2018. Cumulative natural gas production by OIL during April-December, 2019 was 2077.79 MMSCM which is 0.82% higher than the production during the corresponding period of last year but 18%

lower than the cumulative target. Major reason for shortfall in production is less gas withdrawal by major customers owing to shutdown of their plants.

2.3 Natural gas production by **Pvt/JVs** during December, 2019 was 416.44 MMSCM which is 4.87% lower than monthly target and 4.67% higher than December, 2018. Cumulative natural gas production by Pvt/JVs during April-December, 2019 was 3854.29 MMSCM which is 5.70% and 7.64% lower than target for the period and production during corresponding period of last year respectively. Reasons for shortfall in production are as under:

- RJ-ON/6: Production is lower due to less offtake by consumers. Production also lowers due to zone pressure depletions in some wells, water ingress and tubing damage. (FEL)
- Sohagpur West: Dewatering wells gas breakout awaited, slow gas ramp up in pilot wells and scaling in producing wells. (RIL)

3. Refinery Production (in terms of crude oil processed)

Refinery production during December, 2019 was 20829.85 TMT which is 1.00% higher than the target for the month and 0.96% lower when compared with December, 2018. Cumulative production during April-December, 2019 was 190384.89 TMT which is 0.94% higher than the target for the period but 1.19% lower than production during corresponding period of last year respectively. Unit-wise production is given at **Annexure-III**. Company-wise production for the month of December, 2019 and cumulatively for the period April-December, 2019 vis-à-vis same period of last year has been shown in Table-3 and month-wise in Figure-3.

Figure 3: Monthly Refinery Production

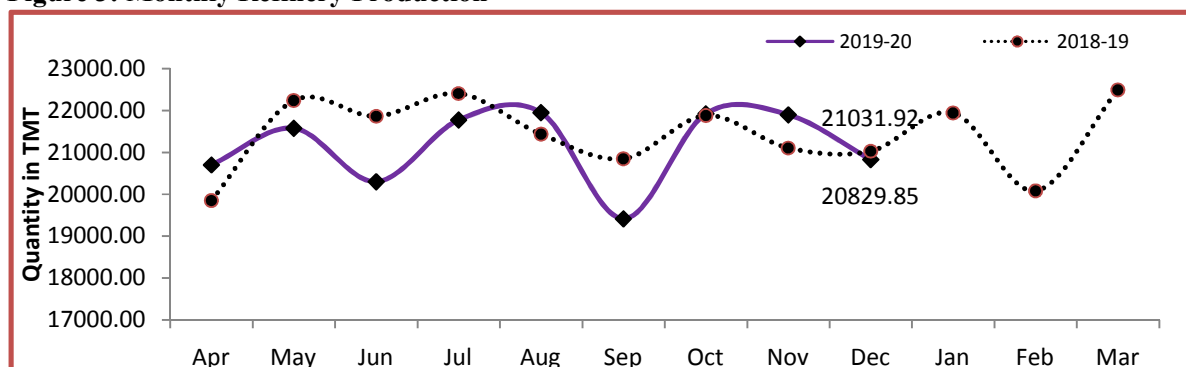


Table 3: Refinery Production (TMT)

Oil Company	Target	December (Month)				April-December (Cumulative)			
	2019-20 (Apr-Mar)	2019-20		2018-19	% over last year	2019-20		2018-19	% over last year
		Target	Prod.*	Prod.		Target	Prod.*	Prod.	
CPSE	147944.81	12414.54	11662.07	12752.29	91.45	108045.09	107892.32	113137.37	95.36
IOCL	71900.25	6115.68	5363.46	6329.93	84.73	52400.80	52316.44	54464.61	96.06
BPCL	30900.00	2640.00	2753.80	2216.36	124.25	22969.99	23339.76	22754.95	102.57
HPCL	16499.00	1116.00	1246.17	1491.18	83.57	11808.00	12639.35	13842.12	91.31
CPCL	10400.00	930.00	936.78	977.65	95.82	7670.00	7625.26	7805.48	97.69
NRL	2799.80	133.70	0.00	263.51	0.00	2047.60	1759.48	2199.15	80.01
MRPL	15400.00	1475.00	1354.75	1468.35	92.26	11115.00	10146.38	12027.39	84.36
ONGC	45.76	4.16	7.10	5.31	133.84	33.70	65.65	43.67	150.34
JVs	18755.00	1588.00	1827.67	1658.13	110.23	14093.00	14969.09	13069.40	114.54
BORL	7800.00	660.00	717.45	572.90	125.23	5860.00	5821.02	3659.80	159.05
HMEL	10955.00	928.00	1110.23	1085.23	102.30	8233.00	9148.07	9409.61	97.22
Private	88040.52	6621.50	7340.11	6621.50	110.85	66474.38	67523.48	66474.38	101.58
RIL	69145.00	6139.41	5635.15	6139.41	91.79	52654.58	51975.64	52654.58	98.71
EOL	18895.52	482.09	1704.96	482.09	353.66	13819.80	15547.85	13819.80	112.50
TOTAL	254740.32	20624.04	20829.85	21031.92	99.04	188612.47	190384.89	192681.14	98.81

Note: Totals may not tally due to rounding off.

*: Provisional

3.1 CPSE Refineries' production during December, 2019 was 11662.07 TMT which is 6.06% lower than the target for the month and 8.55% lower when compared with December, 2018. Cumulative production by CPSE refineries during April-December, 2019 was 107892.32 TMT which is 0.14% and 4.64% lower than target for the period and production during corresponding period of last year respectively. Reasons for shortfall of refinery production in some CPSE refineries are as under:

- IOCL-Guwahati & Digboi: Lower due to Bandh.
- IOCL- Barauni and Panipat: Lower due to high DHDt feed stock.
- IOCL- Gujarat: Lower due to high VR (Vacuum Residue) stock.
- IOCL- Haldia, Bongaigaon & Paradip: Lower due to deferment of shutdown.
- IOCL- Mathura: Lower than due to deferment of BS-VI shutdown.
- BPCL- Kochi: Lower due to operational issues.
- HPCL- Visakh: Lower due to primary unit shutdown.
- NRL- Numaligarh: Lower due to refinery turn around
- MRPL- Mangalore: Lower due to ullage constraint.

3.2 Production in JV refineries during December, 2019 was 1827.67 TMT which is 15.09% higher when compared with the production of December, 2019 and 10.23% higher than the target for the month. Cumulative production by JVs refineries during April-December, 2019 was 14969.09 TMT which is 6.22% and 14.54 higher than the target for the period and production during corresponding period of last year.

3.3 Production in private refineries during December, 2019 was 7340.11 TMT which is 10.85% higher than the target as well as corresponding month of last year. Cumulative production by private refineries during April-December, 2019 was 67523.48 TMT which is 1.58% higher than the target as well as corresponding period of last year.

3.4 Refinery-wise details of the capacity utilization and production of petroleum products during the month of December, 2019 and cumulatively for the period April-December, 2019 vis-à-vis April-December, 2018 are given at **Annexures - IV and V** respectively.

MINISTRY OF PETROLEUM & NATURAL GAS

Annexure-I (Para-1)

Crude Oil Production during the month of December, 2019 and cumulatively for the period April-December, 2019 vis-à-vis April-December, 2018

(Figures in Thousand Metric Tons)

Name of Undertaking/Unit/State	Planned production during the month	Production during the			Cumulative Production			% variation over last year		% variation during the month under review over planned production
		Month under review *	Corresponding month of last year	Preceding month of current year **	(April-December)			During the month under review	Upto the end of the period	
					Planned production during current year	Actual production during current year *	Actual production during corresponding period of last year			
(1)	(2)	(3)	(4)	(5)	(6)	(7)	(8)	(9)	(10)	(11)
1. ONGC	1985.59	1748.63	1761.22	1673.22	16161.21	15386.96	15908.16	-0.71	-3.28	-11.93
Onshore	520.70	511.83	512.19	495.85	4604.08	4557.81	4567.60	-0.07	-0.21	-1.70
Andhra Pradesh	21.81	16.77	23.73	16.10	197.36	153.36	217.41	-29.32	-29.46	-23.09
Assam ^	90.26	81.23	85.84	82.88	759.31	733.11	753.15	-5.38	-2.66	-10.00
Gujarat	384.22	385.28	376.76	369.72	3429.90	3427.57	3375.39	2.26	1.55	0.27
Tamil Nadu	24.41	28.55	25.86	27.15	217.52	243.76	221.66	10.42	9.97	16.95
Offshore	1464.89	1236.80	1249.04	1177.37	11557.13	10829.16	11340.56	-0.98	-4.51	-15.57
Eastern Offshore	1.52	1.70	1.81	1.53	13.79	15.46	12.52	-6.27	23.50	11.63
Western Offshore	1315.37	1117.80	1114.65	1065.32	10369.07	9758.79	10203.51	0.28	-4.36	-15.02
Condensates	148.00	117.31	132.58	110.52	1174.26	1054.91	1124.53	-11.52	-6.19	-20.74
2. OIL (Onshore)	294.75	207.74	274.93	260.17	2559.29	2354.74	2516.56	-24.44	-6.43	-29.52
Assam	292.11	205.05	273.77	257.76	2541.29	2332.47	2508.79	-25.10	-7.03	-29.80
Arunachal Pradesh	2.45	1.64	0.77	1.76	16.34	16.60	5.79	114.62	186.74	-33.01
Rajsthan (heavy oil)	0.19	1.05	0.39	0.65	1.65	5.67	1.97	169.72	187.33	460.81
3. Private / JVC	693.02	694.44	826.17	680.90	7214.10	6633.87	7512.84	-15.94	-11.70	0.20
Onshore	562.16	581.11	653.84	555.96	5938.65	5442.32	6075.69	-11.12	-10.42	3.37
Andhra Pradesh	7.09	4.88	0.64	4.64	61.73	28.39	8.88	662.03	219.64	-31.19
Arunachal Pradesh	2.71	2.75	2.70	2.57	23.77	24.69	25.99	1.70	-4.99	1.29
Assam	6.50	1.77	3.34	2.93	41.83	24.64	24.27	-47.08	1.55	-72.78
Gujarat	31.53	11.45	10.60	11.23	275.29	99.40	101.97	8.07	-2.52	-63.67
Rajasthan	505.33	553.02	628.50	527.52	5462.88	5198.87	5845.85	-12.01	-11.07	9.44
Tamil Nadu	9.01	7.25	8.06	7.07	73.15	66.33	68.73	-10.09	-3.48	-19.55
Offshore	130.86	113.33	172.32	124.95	1275.45	1191.54	1437.15	-34.23	-17.09	-13.39
Eastern Offshore	35.98	39.89	55.02	40.04	371.14	378.38	490.21	-27.49	-22.81	10.88
Gujarat Offshore	59.19	46.33	70.36	46.13	559.25	475.34	544.47	-34.16	-12.70	-21.74
Western Offshore	35.69	27.11	46.95	38.78	345.07	337.83	402.47	-42.25	-16.06	-24.02
GRAND TOTAL (1+2+3)	2973.36	2650.81	2862.32	2614.29	25934.60	24375.57	25937.56	-7.39	-6.02	-10.85
Onshore	1377.61	1300.68	1440.96	1311.98	13102.02	12354.87	13159.84	-9.74	-6.12	-5.58
Offshore	1595.74	1350.14	1421.36	1302.32	12832.58	12020.70	12777.72	-5.01	-5.92	-15.39

Note: Totals may not tally due to rounding off figures.

^: Includes crude oil production of Tripura

*: Provisional. **: Revised

Reasons for shortfall are indicated in the note.

MINISTRY OF PETROLEUM & NATURAL GAS

Annexure-II (Para-2)

Natural Gas Production during the month of December, 2019 and cumulatively for the period April-December, 2019 vis-à-vis April-December, 2018

(Figures in Million Cubic Meters)

Name of Undertaking/Unit/State	Planned production during the month	Production during the			Cumulative Production (April-December)			% variation over last year		% variation during the month under review over planned production
		Month under review *	Corresponding month of last year	Preceding month of current year **	Planned production during current year	Actual production during current year *	Actual production during corresponding period of last year	During the month under review	Upto the end of the period	
(1)	(2)	(3)	(4)	(5)	(6)	(7)	(8)	(9)	(10)	(11)
1. ONGC	2260.13	1998.37	2196.99	1893.85	19011.12	17918.28	18416.25	-9.04	-2.70	-11.58
Onshore	519.01	431.57	486.84	419.17	4610.56	3966.85	4227.69	-11.35	-6.17	-16.85
Andhra Pradesh	84.37	78.00	91.68	76.15	753.15	678.82	816.38	-14.93	-16.85	-7.56
Assam	50.36	37.76	39.10	38.21	424.90	352.28	366.39	-3.43	-3.85	-25.03
Gujarat	98.37	110.51	113.91	105.26	926.22	960.33	1004.32	-2.99	-4.38	12.34
Rajasthan	5.39	0.00	0.00	0.00	47.85	0.00	4.31	-	-	-
Tamil Nadu	128.93	93.55	99.47	89.83	1092.59	801.77	891.99	-5.95	-10.11	-27.44
Tripura	151.59	111.76	142.69	109.72	1365.85	1173.64	1144.30	-21.68	2.56	-26.28
Offshore	1741.12	1566.81	1710.14	1474.68	14400.56	13951.43	14188.56	-8.38	-1.67	-10.01
Eastern Offshore	103.40	79.10	125.74	73.73	893.79	785.19	705.11	-37.09	11.36	-23.50
Western Offshore	1637.72	1487.71	1584.41	1400.96	13506.78	13166.24	13483.45	-6.10	-2.35	-9.16
2. OIL	273.53	225.98	232.65	228.20	2533.82	2077.79	2060.79	-2.87	0.82	-17.38
Assam	254.24	200.87	211.11	204.33	2362.66	1862.57	1886.01	-4.85	-1.24	-20.99
Arunachal Pradesh	1.09	3.73	0.37	3.76	9.63	25.83	9.88	915.67	161.54	243.96
Rajasthan	18.21	21.38	21.17	20.11	161.54	189.39	164.90	1.02	14.85	17.43
3. Private / JVC	437.76	416.44	436.86	441.36	4087.42	3854.29	4173.16	-4.67	-7.64	-4.87
Onshore	186.73	180.24	131.41	180.06	1562.48	1491.87	1254.27	37.16	18.94	-3.47
Andhra Pradesh	4.12	1.69	0.19	1.60	33.20	10.01	3.62	773.20	176.91	-58.86
Arunachal Pradesh	0.66	0.74	1.45	0.81	5.83	5.92	12.38	-49.10	-52.15	11.30
Assam	40.41	16.87	30.53	30.65	321.96	247.66	229.54	-44.73	7.90	-58.25
Gujarat	9.19	5.91	5.84	5.85	82.02	51.45	53.63	1.32	-4.07	-35.66
Rajasthan	129.06	152.31	90.94	138.62	1093.10	1154.41	936.53	67.49	23.26	18.02
Tamil Nadu	3.28	2.71	2.46	2.53	26.37	22.41	18.58	10.21	20.65	-17.51
CBM	102.48	52.98	63.38	52.16	756.46	485.07	534.48	-16.41	-9.24	-48.30
Jharkhand (CBM)	0.56	0.36	0.41	0.41	5.00	3.81	2.26	-11.89	68.45	-35.64
Madhya Pradesh (CBM)	58.00	29.20	31.74	28.12	383.20	257.05	269.29	-7.99	-4.55	-49.65
West Bengal (CBM)	43.91	23.42	31.23	23.64	368.25	224.22	262.92	-25.03	-14.72	-46.68
Offshore	148.56	183.22	242.06	209.13	1768.48	1877.35	2384.42	-24.31	-21.27	23.33
Eastern Offshore	37.92	84.34	90.23	77.26	706.92	737.86	1149.01	-6.53	-35.78	122.44
Gujarat Offshore	14.08	10.56	11.93	9.69	129.37	100.80	85.82	-11.44	17.45	-24.96
Western Offshore	96.57	88.31	139.90	122.18	932.19	1038.69	1149.58	-36.88	-9.65	-8.54
TOTAL (1+2+3)	2971.43	2640.80	2866.49	2563.41	25632.36	23850.36	24650.21	-7.87	-3.24	-11.13
CBM	102.48	52.98	63.38	52.16	756.46	485.07	534.48	-16.41	-9.24	-48.30
Onshore	979.27	837.79	850.91	827.43	8706.86	7536.51	7542.75	-1.54	-0.08	-14.45
Offshore	1889.68	1750.02	1952.20	1683.81	16169.04	15828.77	16572.98	-10.36	-4.49	-7.39

Note: Totals may not tally due to rounding off figures.

*: Provisional. **: Revised

CBM: Coal Bed Methane production.

Reasons for shortfall are indicated in the note.

MINISTRY OF PETROLEUM & NATURAL GAS

Annexure-III (Para-3)

Crude Oil Processed during the month of December, 2019 and cumulatively for the period April-December, 2019 vis-à-vis April-December, 2018

(Figures in Thousand Metric Tons)

Name of Undertaking/Unit	Planned production during the month	Production during the			Cumulative Production			% variation		% variation during the month under review over planned production
		Month under review *	Corresponding month of last year	Preceding month of current year **	(April-December)			During the month under review	Upto the end of the period	
					Planned production during current year**	Actual production during current year *	Actual production during corresponding period of last year			
(1)	(2)	(3)	(4)	(5)	(6)	(7)	(8)	(9)	(10)	(11)
A. Public Sector	12414.54	11662.07	12752.29	12572.54	108045.09	107892.32	113137.37	-8.55	-4.64	-6.06
1. IOC, Guwahati	94.00	87.21	15.92	90.41	786.00	757.02	707.10	447.86	7.06	-7.22
2. IOC, Barauni	620.45	573.00	599.71	594.80	5013.39	4905.57	4933.48	-4.45	-0.57	-7.65
3. IOC, Gujarat	1317.50	1299.23	1188.66	1271.09	9632.89	9416.56	10266.39	9.30	-8.28	-1.39
4. IOC, Haldia	440.83	376.05	688.71	363.61	5095.42	5012.23	5999.34	-45.40	-16.45	-14.69
5. IOC, Mathura	513.00	82.81	821.51	829.50	6412.00	6986.66	7374.96	-89.92	-5.27	-83.86
6. IOC, Digboi	58.00	48.50	53.70	58.92	502.00	487.14	508.50	-9.68	-4.20	-16.38
7. IOC, Panipat	1418.20	1401.98	1388.50	1292.91	11485.80	11094.96	12295.65	0.97	-9.77	-1.14
8. IOC, Bongaigaon	238.70	65.00	226.60	219.59	1622.00	1711.53	1832.30	-71.32	-6.59	-72.77
9. IOC, Paradip	1415.00	1429.69	1346.63	1369.26	11851.30	11944.78	10546.89	6.17	13.25	1.04
Total IOC	6115.68	5363.46	6329.93	6090.08	52400.80	52316.44	54464.61	-15.27	-3.94	-12.30
10. BPCL, Mumbai	1340.00	1343.61	1260.60	1308.96	10939.99	11014.82	10985.04	6.59	0.27	0.27
11. BPCL, Kochi	1300.00	1410.18	955.77	1392.02	12030.00	12324.94	11769.91	47.54	4.72	8.48
Total BPCL	2640.00	2753.80	2216.36	2700.98	22969.99	23339.76	22754.95	24.25	2.57	4.31
12. HPCL, Mumbai	285.00	582.08	725.67	744.18	5034.00	5948.86	6529.17	-19.79	-8.89	104.24
13. HPCL, Visakh	831.00	664.09	765.51	776.18	6774.00	6690.50	7312.95	-13.25	-8.51	-20.09
Total HPCL	1116.00	1246.17	1491.18	1520.37	11808.00	12639.35	13842.12	-16.43	-8.69	11.66
14. CPCL, Manali	930.00	936.78	938.70	788.63	7670.00	7625.26	7498.79	-0.20	1.69	0.73
15. CPCL, CBR	0.00	0.00	38.95	0.00	0.00	0.00	306.70	-	-	-
Total CPCL	930.00	936.78	977.65	788.63	7670.00	7625.26	7805.48	-4.18	-2.31	0.73
16. NRL, Numaligarh	133.70	0.00	263.51	118.71	2047.60	1759.48	2199.15	-100.00	-19.99	-100.00
17. MRPL, Mangalore	1475.00	1354.75	1468.35	1346.26	11115.00	10146.38	12027.39	-7.74	-15.64	-8.15
18. ONGC, Tatipaka	4.16	7.10	5.31	7.53	33.70	65.65	43.67	33.84	50.34	70.75
B. Joint Venture	1588.00	1827.67	1658.13	1730.29	14093.00	14969.09	13069.40	10.23	14.54	15.09
19. BORL, Bina	660.00	717.45	572.90	657.83	5860.00	5821.02	3659.80	0.67	59.05	8.70
20. HMEL, GGSR, Bhatinda	928.00	1110.23	1085.23	1072.46	8233.00	9148.07	9409.61	2.30	-2.78	19.64
C. Private Sector	6621.50	7340.11	6621.50	7597.78	66474.38	67523.48	66474.38	10.85	1.58	10.85
21. RIL, Jamnagar	2806.98	2840.32	2806.98	2828.21	24716.03	24046.73	24716.03	1.19	-2.71	1.19
22. RIL, SEZ	3332.43	2794.83	3332.43	3111.60	27938.54	27928.91	27938.54	-16.13	-0.03	-16.13
Total RIL	6139.41	5635.15	6139.41	5939.81	52654.58	51975.64	52654.58	-8.21	-1.29	-8.21
23. EOL, Vadinar	482.09	1704.96	482.09	1657.97	13819.80	15547.85	13819.80	253.66	12.50	253.66
TOTAL(A+B+C)	20624.04	20829.85	21031.92	21900.62	188612.47	190384.89	192681.14	-0.96	-1.19	1.00

Note: 1. Totals may not tally due to rounding off figures. *: Provisional. **: Revised

2. CPCL CBR crude distillation unit under shutdown from 01.04.2019 for project activities.

Reasons for shortfall are indicated in the note.

Refinery-wise Capacity Utilisation during the month of December, 2019 and cumulatively for the period April-December, 2019 vis-à-vis April-December, 2018

(Figures in Thousand Metric Tons)

Name of Undertaking/Unit	December, 2019			December, 2018			Cumulative (April - December)					
	Prorated Installed Capacity	Actual Crude T'put *	% Utilisation of Installed Capacity	Prorated Installed Capacity	Actual Crude T'put	% Utilisation of Installed Capacity	2019-20			2018-19		
							Prorated Installed Capacity	Actual Crude T'put *	% Utilisation of Installed Capacity	Prorated Installed Capacity	Actual Crude T'put	% Utilisation of Installed Capacity
(1)	(2)	(3)	(4)	(5)	(6)	(7)	(8)	(9)	(10)	(11)	(12)	(13)
A. Public Sector	12066.00	11662.07	96.65	12066.00	12752.29	105.69	106744.00	107892.32	101.08	107036.00	113137.37	105.70
1. IOC, Guwahati	85.00	87.21	102.60	85.00	15.92	18.73	751.00	757.02	100.80	753.00	707.10	93.90
2. IOC, Barauni	510.00	573.00	112.35	510.00	599.71	117.59	4508.00	4905.57	108.82	4521.00	4933.48	109.12
3. IOC, Gujarat	1164.00	1299.23	111.62	1164.00	1188.66	102.12	10294.00	9416.56	91.48	10322.00	10266.39	99.46
4. IOC, Haldia	637.00	376.05	59.03	637.00	688.71	108.12	5635.00	5012.23	88.95	5651.00	5999.34	106.16
5. IOC, Mathura	679.00	82.81	12.20	679.00	821.51	120.99	6011.00	6986.66	116.23	6027.00	7374.96	122.37
6. IOC, Digboi	55.00	48.50	88.18	55.00	53.70	97.63	488.00	487.14	99.82	490.00	508.50	103.78
7. IOC, Panipat	1274.00	1401.98	110.05	1274.00	1388.50	108.99	11270.00	11094.96	98.45	11301.00	12295.65	108.80
8. IOC, Bongaigaon	200.00	65.00	32.50	200.00	226.60	113.30	1766.00	1711.53	96.92	1771.00	1832.30	103.46
9. IOC, Paradip	1274.00	1429.69	112.22	1274.00	1346.63	0.00	11270.00	11944.78	105.99	11301.00	10546.89	0.00
Total IOC	5877.00	5363.46	91.26	5877.00	6329.93	107.71	51995.00	52316.44	100.62	52137.00	54464.61	104.46
10. BPCL, Mumbai	1019.00	1343.61	131.86	1019.00	1260.60	123.71	9016.00	11014.82	122.17	9041.00	10985.04	121.50
11. BPCL, Kochi	1316.00	1410.18	107.16	1316.00	955.77	72.63	11646.00	12324.94	105.83	11678.00	11769.91	100.79
Total BPCL	2336.00	2753.80	117.89	2336.00	2216.36	94.88	20663.00	23339.76	112.95	20719.00	22754.95	109.83
12. HPCL, Mumbai	637.00	582.08	91.38	637.00	725.67	113.92	5635.00	5948.86	105.57	5651.00	6529.17	115.54
13. HPCL, Visakh	705.00	664.09	94.20	705.00	765.51	108.58	6236.00	6690.50	107.29	6253.00	7312.95	116.95
Total HPCL	1342.00	1246.17	92.86	1342.00	1491.18	111.12	11872.00	12639.35	106.46	11904.00	13842.12	116.28
14. CPCL, Manali	892.00	936.78	105.02	892.00	938.70	105.24	7889.00	7625.26	96.66	7911.00	7498.79	94.79
15. CPCL, CBR	85.00	0.00	0.00	85.00	38.95	45.82	751.00	0.00	0.00	753.00	306.70	40.73
Total CPCL	977.00	936.78	95.88	977.00	977.65	100.07	8641.00	7625.26	88.25	8664.00	7805.48	90.09
16. NRL, Numaligarh	255.00	0.00	0.00	255.00	263.51	103.34	2254.00	1759.48	78.06	2260.00	2199.15	97.31
17. MRPL, Mangalore	1274.00	1354.75	106.34	1274.00	1468.35	115.26	11270.00	10146.38	90.03	11301.00	12027.39	106.43
18. ONGC, Tatipaka	6.00	7.10	118.38	6.00	5.31	88.45	50.00	65.65	131.31	50.00	43.67	87.34
B. Joint Venture	1622.00	1827.67	112.68	1469.00	1658.13	112.87	14351.00	14969.09	104.31	13034.00	13069.40	100.27
19. BORL, Bina	662.00	717.45	108.38	510.00	572.90	112.33	5861.00	5821.02	99.32	4521.00	3659.80	80.95
20. HMEL, GGS, Bhatinda	960.00	1110.23	115.65	960.00	1085.23	113.04	8490.00	9148.07	107.75	8514.00	9409.61	110.52
C. Private Sector	7491.00	7340.11	97.99	7491.00	6621.50	88.39	66270.00	67523.48	101.89	66452.00	66474.38	100.03
21. RIL, Jamnagar	2803.00	2840.32	101.33	2803.00	2806.98	100.14	24795.00	24046.73	96.98	24863.00	24716.03	99.41
22. RIL, SEZ	2990.00	2794.83	93.47	2990.00	3332.43	111.45	26448.00	27928.91	105.60	26521.00	27938.54	105.34
Total RIL	5792.00	5635.15	97.29	5792.00	6139.41	106.00	51243.00	51975.64	101.43	51384.00	52654.58	102.47
23. EOL, Vadinar	1699.00	1704.96	100.35	1699.00	482.09	28.38	15027.00	15547.85	103.47	15068.00	13819.80	91.72
TOTAL(A+B+C)	21179.00	20829.85	98.35	21026.00	21031.92	100.03	187365.00	190384.89	101.61	186522.00	192681.14	103.30

Note: Crude throughput in terms of crude oil processed. *: Provisional. **: Revised

MINISTRY OF PETROLEUM & NATURAL GAS

Annexure-V (Para 3.4)

Production of Petroleum Products during the month of December, 2019 and cumulatively for the period April-December, 2019 vis-à-vis April-December, 2018

(Figures in Thousand Metric Tons)

Name of Undertaking/Unit	Planned production during the month	Production during the			Cumulative Production (April-December)			% variation over last year		% variation during the month under review over planned production
		Month under review *	Corresponding month of last year	Preceding month of current year **	Planned production during current year**	Actual production during current year*	Actual production during corresponding period of last year	During the month under review	Upto the end of the period	
(1)	(2)	(3)	(4)	(5)	(6)	(7)	(8)	(9)	(10)	(11)
A. Public Sector	11697.35	11117.10	12232.82	11860.20	101726.28	101786.49	107233.09	-9.12	-5.08	-4.96
1. IOC, Guwahati	94.85	103.69	65.71	109.83	802.45	917.12	839.47	57.81	9.25	9.32
2. IOC, Barauni	565.75	570.47	558.56	572.12	4624.90	4482.40	4634.25	2.13	-3.28	0.83
3. IOC, Gujarat	1259.44	1257.65	1164.55	1203.36	9217.35	8864.91	9728.32	8.00	-8.88	-0.14
4. IOC, Haldia	378.77	298.91	609.79	332.32	4638.31	4589.91	5613.85	-50.98	-18.24	-21.08
5. IOC, Mathura	504.37	129.02	818.83	760.24	6150.04	6797.39	7236.56	-84.24	-6.07	-74.42
6. IOC, Digboi	72.14	48.69	54.62	60.97	618.79	482.74	512.55	-10.87	-5.82	-32.52
7. IOC, Panipat	1456.78	1436.33	1468.33	1308.43	11534.21	11258.65	12652.03	-2.18	-11.01	-1.40
8. IOC, Bongaigaon	216.16	27.07	220.92	197.05	1490.94	1596.37	1704.32	-87.75	-6.33	-87.48
9. IOC, Paradip	1291.62	1271.25	1235.20	1265.86	10822.00	10794.29	9549.32	2.92	13.04	-1.58
Total IOC	5839.88	5143.08	6196.50	5810.17	49899.00	49783.77	52470.67	-17.00	-5.12	-11.93
10. BPCL, Mumbai	1284.00	1317.66	1214.07	1276.93	10482.00	10608.18	10572.03	8.53	0.34	2.62
11. BPCL, Kochi	1213.29	1398.56	891.55	1326.98	11260.36	11625.73	11021.44	56.87	5.48	15.27
Total BPCL	2497.29	2716.22	2105.62	2603.91	21742.36	22233.91	21593.47	29.00	2.97	8.77
12. HPCL, Mumbai	277.00	551.20	699.47	715.48	4752.00	5679.07	6186.25	-21.20	-8.20	98.99
13. HPCL, Visakh	768.00	676.07	737.61	653.85	6264.00	6104.65	6827.75	-8.34	-10.59	-11.97
Total HPCL	1045.00	1227.28	1437.09	1369.33	11016.00	11783.72	13014.00	-14.60	-9.45	17.44
14. CPCL, Manali	839.45	855.19	856.61	705.09	6906.54	6982.55	6745.22	-0.17	3.52	1.87
15. CPCL, CBR	0.00	0.00	39.23	0.00	0.00	0.88	308.36	-	-	-
Total CPCL	839.45	855.19	895.84	705.09	6906.54	6983.44	7053.58	-4.54	-0.99	1.87
16. NRL, Numaligarh	131.74	4.14	267.51	111.13	2007.76	1702.20	2179.39	-98.45	-21.90	-96.86
17. MRPL, Mangalore	1340.00	1164.31	1325.10	1253.50	10122.23	9237.92	10880.15	-12.13	-15.09	-13.11
18. ONGC, Tatipaka	4.00	6.90	5.17	7.08	32.40	61.53	41.83	33.54	47.10	72.50
B. Joint Venture	1460.18	1656.54	1569.99	1670.89	12953.78	13990.11	12235.07	5.51	14.34	13.45
19. BORL, Bina	587.18	642.14	549.18	608.03	5215.78	5313.56	3290.79	16.93	61.47	9.36
20. HMEL, GGSR, Bhatinda	873.00	1014.40	1020.81	1062.86	7738.00	8676.56	8944.28	-0.63	-2.99	16.20
C. Private Sector	7213.54	8910.70	7213.54	8581.66	73543.11	76096.20	73543.11	23.53	3.47	23.53
21. RIL, Jamnagar	2821.64	3067.57	2821.64	3036.09	25974.47	25618.29	25974.47	8.72	-1.37	8.72
22. RIL, SEZ	3994.97	4209.83	3994.97	4006.06	34443.13	35617.37	34443.13	5.38	3.41	5.38
Total RIL	6816.62	7277.40	6816.62	7042.15	60417.60	61235.66	60417.60	6.76	1.35	6.76
23. EOL, Vadinar	396.92	1633.30	396.92	1539.50	13125.52	14860.54	13125.52	311.49	13.22	311.49
TOTAL REFINERY (A+B+C)	20371.06	21684.34	21016.34	22112.74	188223.18	191872.80	193011.27	3.18	-0.59	6.45
ONGC	293.39	297.31	306.07	289.18	2505.75	2605.35	2662.43	-2.86	-2.14	1.33
GAIL	102.66	111.28	118.79	108.24	917.60	963.21	990.58	-6.32	-2.76	8.40
OIL	3.30	1.09	1.40	3.00	24.40	20.50	24.54	-22.39	-16.49	-67.12
D. Total Fractionators	399.35	409.68	426.25	400.41	3447.75	3589.05	3677.55	-3.89	-2.41	2.59
Grand Total (A+B+C+D)	20770.42	22094.01	21442.60	22513.15	191670.93	195461.85	196688.83	3.04	-0.62	6.37

Note: Totals may not tally due to rounding off figures. *: Provisional. **: Revised