

Government of India
Ministry of Petroleum and Natural Gas
Economics & Statistics Division

New Delhi
Dated the **September, 2016**

Monthly Production Report
August 2016

Crude Oil

- Crude oil production¹ during August 2016 was 3067.80 TMT which is 1.02% and 3.93% lower than target and production achieved in August 2015 respectively. Cumulative crude oil production during April-August, 2016 was 15146.22 TMT which is 0.75% and 3.15% lower than target and production during corresponding period of last year respectively. Unit-wise and state-wise crude oil production is given at Annexure-I. Unit-wise crude oil production for the month of August, 2016 and cumulatively for the period April-August, 2016 vis-à-vis same period of last year has been shown in Table-1 and month-wise in Figure-1.

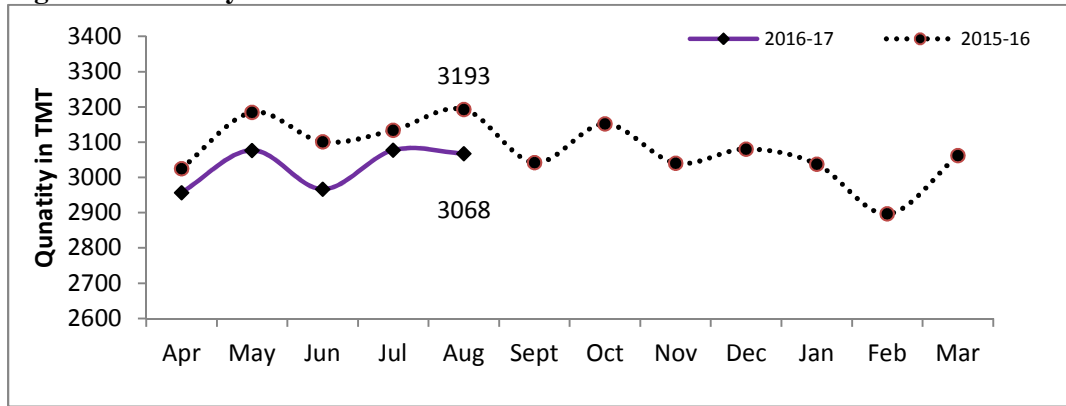
Table-1: Crude Oil Production (in TMT)

Oil Company	Target	August (Month)				April-August (Cumulative)			
	2016-17 (Apr-Mar)	2016-17		2015-16	% over last year	2016-17		2015-16	% over last year
		Target	Prod.*	Prod.		Target	Prod.*	Prod.	
ONGC	22766.00	1897.03	1865.31	1929.26	96.69	9339.92	9225.22	9384.57	98.30
OIL	3480.00	276.32	272.08	276.02	98.57	1345.26	1342.94	1388.15	96.74
PSC Fields	10839.32	926.13	930.42	987.86	94.19	4576.01	4578.05	4865.61	94.09
Total	37085.32	3099.48	3067.80	3193.15	96.07	15261.20	15146.22	15638.33	96.85

*: Provisional

¹ Including condensate

Figure-1: Monthly Crude Oil Production



Unit-wise production details with reasons for shortfall have been given in following sub-sections:

1.1 Crude oil production by ONGC during August, 2016 was 1865.31 TMT which is 1.67% lower than the monthly target and 3.31% less when compared with August 2015. Cumulative crude oil production during April-August, 2016 was 9225.22 TMT which is 1.23% lower than target for the period and 1.70% lower than the production during corresponding period of last year. Reasons for shortfall in production in some fields are as under:

- Repair of sub-sea leakage in well fluid lines and less than planned production from Marginal fields
- Repair of sub-sea leakage in 16" HSC–HRG well fluid line

1.2 Crude oil production by OIL during August, 2016 was 272.08 TMT which is 1.54% lower than monthly target and 1.43% less than production in August 2015. Cumulative crude oil production during April-August, 2016 was 1342.94 TMT which is 0.17% lower than target for the period and 3.26% lower than the production during corresponding period of last year. Reasons for shortfall in production are as under:

- Less than planned contribution from old wells.
- Rise in water cut in wells of Greater Hapjan, Greater Chandmari fields & Naharkatiya fields.
- Loss in production of 2622 MT on account of strike by drivers during 15th to 18th Aug'16, bomb blasts at Tinsukia, Dibrugarh and Sibsagar districts on 14th & 15th Aug'16 and miscreant activities/local problems at various locations during the month.

1.3 Crude oil production by Pvt. /JVs during August 2016 was 930.42 TMT which is 0.46% higher than the monthly target but 5.81% less when compared with August, 2015.

Cumulative crude oil production during April-August, 2016 was 4578.05 TMT which is marginally higher (0.04%) than target for the period and 5.91% lower than the production during corresponding period of last year. Reasons for shortfall in production are as under:

- Natural Decline in Ravva, CB-OS/2 and well fluid riser problems in Panna-Mukta
- Closure of one well in MA and one well in D1D3 field in KG-DWN-98/3
- Underperformance of Bhagyam field and natural decline of Mangala wells of RJ-ON-90/1

Natural Gas

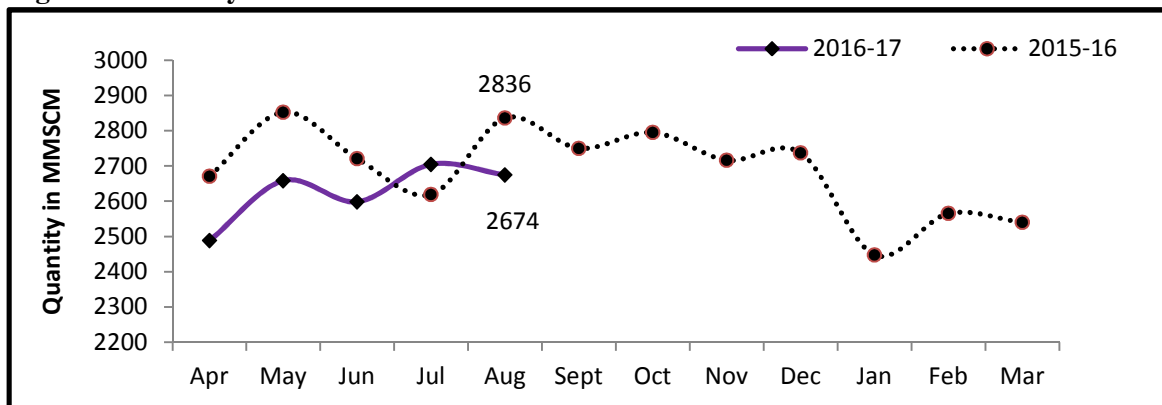
2. Natural gas production during August 2016 was 2674.15 MMSCM which is 4.90% lower than the target for the month and 5.72% lower than the production in August 2015. Cumulative natural gas production during April-August, 2016 was 13123.44 MMSCM which is 3.27% lower than target for the period and 4.20% lower than the production during corresponding period of last year. Unit-wise and state-wise natural gas production is given at Annexure-II. Unit-wise natural gas production for the month of August, 2016 and cumulatively for the period April-August, 2016 vis-à-vis same period of last year has been shown in Table-2 and month-wise in Figure-2.

Table-2: Natural Gas Production (MMSCM)

Oil Company	Target	August (Month)				April-August (Cumulative)			
	2016-17 (Apr-Mar)	2016-17		2015-16	% over last year	2016-17		2015-16	% over last year
		Target	Prod.*	Prod.		Target	Prod.*	Prod.	
ONGC	22743.43	1877.46	1845.51	1855.82	99.44	8964.30	8841.63	9022.49	98.00
OIL	2950.03	257.03	244.05	242.66	100.57	1265.79	1230.88	1116.89	110.21
PSC Fields	8425.44	677.35	584.59	737.88	79.23	3337.48	3050.93	3559.40	85.71
Total	34118.90	2811.85	2674.15	2836.36	94.28	13567.57	13123.44	13698.78	95.80

*: Provisional

Figure-2: Monthly Natural Gas Production



2.1 Natural gas production by ONGC during August, 2016 was 1845.51 MMSCM which is 1.70% lower than the monthly target and 0.56% lower when compared with August 2015. Cumulative natural gas production during April-August, 2016 was 8841.63 MMSCM which is 1.37% lower than the cumulative target and 2.0% lower than the production during the corresponding period of last year. Reasons for shortfall in production are as under:

- Natural decline from Bassein field and restricted withdrawal of gas by GAIL in EOA

2.2 Natural gas production by OIL during August, 2016 was 244.05 MMSCM which is 5.05% lower than the monthly target but 0.57% higher than August 2015. Cumulative natural gas production during April-August, 2016 was 1230.88 MMSCM which is 2.76% lower than the cumulative target but 10.21% higher than the production during the corresponding period of last year. Reasons for shortfall in production are as under:

- Loss in gas production potential on account of water loading of high potential wells, unexpected subsurface problems

2.3 Natural gas production by Pvt. /JVs during August 2016 was 584.59 MMSCM which is 13.70% lower than the monthly target and 20.77% less when compared with August, 2015. Cumulative natural gas production during April-August, 2016 was 3050.93 MMSCM which is 8.59% lower than the cumulative target and 14.29% lower than the production during the corresponding period of last year. Reasons for shortfall in production are as under:

- Underperformance of KG-OSN-2001/3
- Increase in water cut in few wells in RJ-ON/6
- Underperformance of Raniganj East, Sohagpur West & Raniganj South CBM blocks
- Closure of one well each in MA and D1D3 in KG-DWN-98/3
- Increase in water cut in few wells in RJ-ON/6

Refinery Production (in terms of Crude oil processed)

3 Refinery production during August, 2016 was 20290.26 TMT which is 2.32% higher than the target for the month and 3.46% higher than the production during corresponding period of last year. Cumulative production during April-August, 2016 was 101784.38 TMT which is 3.35% higher than the target for the period and 7.64% higher than the production during corresponding period of last year. Unit-wise production is given at Annexure-III. Unit-wise production for the month of August, 2016 and cumulatively for

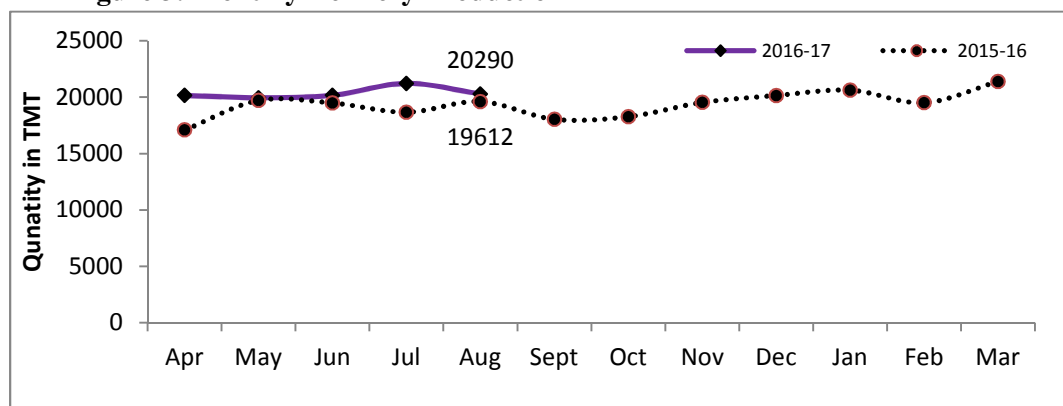
the period April-August, 2016 vis-à-vis same period of last year has been shown in Table-3 and month-wise in Figure-3.

Table 3: Refinery Production (TMT)

Oil Company	Target	August (Month)				April-August (Cumulative)			
	2016-17 (Apr-Mar)	2016-17		2015-16	% over last year	2016-17		2015-16	% over last year
		Target	Prod.*	Prod.		Target	Prod.*	Prod.	
A. Public Sector	135565.03	10894.00	10985.15	10296.55	106.69	55625.78	56599.40	50938.73	111.11
IOCL	65100.00	5410.30	4953.45	4558.39	108.67	26634.68	26736.96	22875.57	116.88
BPCL	25250.15	2049.97	2150.36	2033.01	105.77	10211.48	10485.93	10142.12	103.39
HPCL	16800.29	1147.31	1253.23	1551.45	80.78	6925.89	7152.95	6465.36	110.63
CPCL	10250.00	951.11	1006.67	549.16	183.31	4599.35	4645.52	4148.96	111.97
NRL	2670.00	231.37	239.04	252.93	94.51	1142.44	1163.62	918.56	126.68
MRPL	15450.00	1100.00	1376.01	1349.04	102.00	6095.00	6380.13	6366.61	100.21
ONGC	44.59	3.95	6.40	2.56	250.14	16.94	34.29	21.54	159.16
B. Joint Venture	15000.00	1246.02	1521.60	1557.55	97.69	6478.73	7358.10	7002.52	105.08
BORL	6000.00	450.00	587.60	620.19	94.74	2550.00	2771.82	2425.00	114.30
HMEL	9000.00	796.02	934.00	937.36	99.64	3928.73	4586.28	4577.52	100.19
C. Private Sector	89852.65	7689.74	7783.51	7757.64	100.33	36385.32	37826.87	36616.40	103.31
RIL	69561.01	5998.74	6002.57	5998.74	100.06	27930.35	29068.16	27930.35	104.07
EOL	20291.64	1691.00	1780.94	1758.90	101.25	8454.97	8758.71	8686.05	100.84
TOTAL (A+B+C)	240417.68	19829.76	20290.26	19611.74	103.46	98489.83	101784.38	94557.65	107.64

*: Provisional

Figure 3: Monthly Refinery Production



3.1 PSU Refineries' production during August, 2016 was 10985.15 TMT which is 0.84% higher than the target for the month and 6.69% higher than the production achieved in the corresponding month of last year. Cumulative production during April-August, 2016 was 56599.40 TMT which is 1.75% higher than the target for the period and 11.11% higher than the production during corresponding period of last year. Reasons for shortfall of refinery production in some PSU refineries are as under:

- IOCL, Guwahati & Digboi: Lower crude availability.
- IOCL, Panipat: Throughput is restricted due to advancement of planned shut-down of Diesel Hydro Treatment unit.
- IOCL, Paradip: Throughput is lower due to delay in commissioning of South oil jetty and Continuous Catalytic Reforming Unit under shut-down for maintenance.

3.2 Production in JV refineries during August, 2016 was 1521.60 TMT which is 22.12% higher than the target for the month but 2.31% lower than the production achieved in the corresponding month of last year. Cumulative production during April-August, 2016 was 7358.10 TMT which is 13.57% higher than the target for the period and 5.08% higher than the production during corresponding period of last year.

3.3 Production in private refineries during August, 2016 was 7783.51 TMT which is 1.22% higher than the target for the month and 0.33% higher than the production achieved in the corresponding month of last year. Cumulative production during April-August, 2016 was 37826.88 TMT which is 3.96% higher than the target for the period and 3.31% higher than the production during corresponding period of last year.

3.4 Refinery-wise details of the capacity utilization and production of petroleum products during the month of August, 2016 and cumulatively for the period April-August, 2016 vis-à-vis April-August, 2015 are given at Annexures-IV and V respectively.

Annexure-I

(Para 1)

MINISTRY OF PETROLEUM & NATURAL GAS

Crude Oil Production during the month of August, 2016 and cumulatively for the period April-August, 2016 vis-à-vis April-August, 2015

(Qty: '000' Tonnes)

Name of Undertaking/Unit/State	Planned production during the month	Production during the			Cumulative Production			% variation over last year		% variation during the month under review over planned production
		Month under review *	Corresponding month of last year **	Preceding month of current year **	(April-August)			During the month under review	Upto the end of the period	
					Planned production during current year	Actual production during current year *	Actual production during corresponding period of last year **			
(1)	(2)	(3)	(4)	(5)	(5)	(6)	(7)	(8)	(9)	(10)
1. ONGC	1897.029	1865.309	1929.264	1867.769	9339.924	9225.220	9384.573	-3.31	-1.70	-1.67
Onshore	498.786	504.911	492.769	496.593	2455.027	2452.080	2412.734	2.46	1.63	1.23
Andhra Pradesh	23.155	22.023	25.447	21.248	113.024	106.512	126.946	-13.46	-16.10	-4.89
Assam ^	83.828	80.603	81.638	78.692	404.541	391.268	406.217	-1.27	-3.68	-3.85
Gujarat	373.224	382.955	363.953	377.733	1842.915	1857.736	1769.568	5.22	4.98	2.61
Tamil Nadu	18.579	19.330	21.731	18.920	94.547	96.564	110.003	-11.05	-12.22	4.04
Offshore	1398.243	1360.398	1436.495	1371.176	6884.897	6773.140	6971.839	-5.30	-2.85	-2.71
Eastern Offshore	0.746	1.314	1.787	1.103	6.582	6.310	9.196	-26.47	-31.38	76.14
Western Offshore	1278.974	1245.421	1321.859	1251.918	6304.461	6202.497	6420.435	-5.78	-3.39	-2.62
Condensates	118.523	113.663	112.849	118.155	573.854	564.333	542.208	0.72	4.08	-4.10
2. OIL (Onshore)	276.322	272.075	276.024	272.690	1345.262	1342.943	1388.147	-1.43	-3.26	-1.54
Assam	275.748	271.385	275.578	272.039	1342.175	1339.663	1386.281	-1.52	-3.36	-1.58
Arunachal Pradesh	0.574	0.690	0.446	0.651	3.087	3.280	1.866	54.71	75.78	20.21
3. DGH (Private / JVC)	926.134	930.419	987.857	936.942	4576.010	4578.052	4865.605	-5.81	-5.91	0.46
Onshore	741.830	747.575	754.168	743.790	3644.454	3636.024	3724.279	-0.87	-2.37	0.77
Arunachal Pradesh	4.566	4.041	4.271	3.954	20.922	19.801	21.114	-5.39	-6.22	-11.50
Gujarat	15.503	11.723	14.197	11.668	69.070	58.082	61.405	-17.43	-5.41	-24.38
Rajasthan	716.706	728.597	735.700	725.381	3537.308	3548.044	3641.760	-0.97	-2.57	1.66
Tamil Nadu	5.054	3.214	0.000	2.787	17.154	10.097	0.000	-	-	-
Offshore	184.304	182.844	233.689	193.152	931.557	942.028	1141.326	-21.76	-17.46	-0.79
Eastern Offshore	81.564	82.820	111.885	81.378	416.899	411.221	602.303	-25.98	-31.73	1.54
Gujarat Offshore	30.710	33.048	36.126	32.891	162.538	167.064	165.928	-8.52	0.68	7.61
Western Offshore	72.030	66.976	85.678	78.883	352.120	363.743	373.095	-21.83	-2.51	-7.02
GRAND TOTAL (1+2+3)	3099.485	3067.803	3193.145	3077.401	15261.196	15146.215	15638.325	-3.93	-3.15	-1.02
Onshore	1516.938	1524.561	1522.961	1513.073	7444.743	7431.047	7525.160	0.11	-1.25	0.50
Offshore	1582.547	1543.242	1670.184	1564.328	7816.454	7715.168	8113.165	-7.60	-4.91	-2.48

Note: Totals may not tally due to rounding off figures.

^: Includes crude oil production of Tripura

*: Provisional. **: Revised

Reasons for shortfall are indicated in the note.

MINISTRY OF PETROLEUM & NATURAL GAS

Natural Gas Production during the month of August, 2016 and cumulatively for the period April-August, 2016 vis-à-vis April-August, 2015

(Qty: Million Cubic Meters)

Name of Undertaking/Unit/State	Planned production during the month	Production during the			Cumulative Production (April-August)			% variation over last year		% variation during the month under review over planned production
		Month under review *	Corresponding month of last year **	Preceding month of current year **	Planned production during current year	Actual production during current year *	Actual production during corresponding period of last year **	During the month under review	Upto the end of the period	
(1)	(2)	(3)	(4)	(5)	(5)	(6)	(7)	(8)	(9)	(10)
1. ONGC	1877.463	1845.509	1855.815	1823.721	8964.302	8841.634	9022.492	-0.56	-2.00	-1.70
Onshore	430.708	432.619	398.714	422.325	2138.026	2042.484	1987.479	8.50	2.77	0.44
Andhra Pradesh	54.918	75.657	47.257	73.004	274.677	329.678	250.128	60.10	31.80	37.76
Assam	36.075	36.880	34.434	36.967	175.175	182.367	167.739	7.10	8.72	2.23
Gujarat	123.528	122.125	114.323	118.486	616.712	563.543	574.656	6.82	-1.93	-1.14
Rajasthan	0.425	0.276	0.210	0.122	2.096	1.413	2.195	31.43	-35.62	-35.01
Tamil Nadu	93.384	77.640	88.303	74.212	468.842	388.391	462.865	-12.08	-16.09	-16.86
Tripura	122.378	120.041	114.187	119.534	600.523	577.092	529.896	5.13	8.91	-1.91
Offshore	1446.755	1412.890	1457.101	1401.396	6826.275	6799.150	7035.014	-3.03	-3.35	-2.34
Eastern Offshore	55.299	28.056	21.283	29.774	185.004	99.244	107.236	31.82	-7.45	-49.26
Western Offshore	1391.456	1384.834	1435.818	1371.622	6641.271	6699.906	6927.778	-3.55	-3.29	-0.48
2. OIL	257.028	244.052	242.658	256.116	1265.793	1230.880	1116.885	0.57	10.21	-5.05
Assam	240.906	225.083	224.696	234.405	1161.207	1124.396	1035.916	0.17	8.54	-6.57
Arunachal Pradesh	1.242	1.010	0.416	0.978	6.146	4.965	4.613	142.79	7.63	-18.68
Rajasthan	14.880	17.959	17.546	20.733	98.440	101.519	76.356	2.35	32.95	20.69
3. DGH (Private / JVC)	677.355	584.591	737.882	624.798	3337.475	3050.925	3559.402	-20.77	-14.29	-13.70
Onshore	91.381	102.997	110.851	104.920	492.744	523.233	494.291	-7.09	5.86	12.71
Assam	0.000	0.000	0.000	0.000	0.000	0.000	0.000	0.00	0.00	0.00
Arunachal Pradesh	0.772	1.232	1.560	1.225	3.537	6.089	8.348	-21.03	-27.06	59.59
Gujarat	7.597	7.701	7.728	7.793	36.374	39.490	39.311	-0.35	0.46	1.37
Rajasthan	82.432	93.752	101.563	95.625	450.898	476.664	446.632	-7.69	6.72	13.73
Tamil Nadu	0.580	0.312	0.000	0.277	1.935	0.990	0.000	-	-	-
CBM	83.906	48.235	34.304	46.858	327.721	218.647	162.476	40.61	34.57	-42.51
Jharkhand (CBM)	0.275	0.259	0.169	0.294	1.358	1.157	0.755	53.25	53.25	-5.90
Madhya Pradesh (CBM)	22.680	0.317	0.094	0.342	56.860	1.810	0.548	237.23	230.29	-98.60
West Bengal (CBM)	60.951	47.659	34.041	46.222	269.503	215.680	161.173	40.00	33.82	-21.81
Offshore	502.068	433.359	592.727	473.020	2517.010	2309.045	2902.635	-26.89	-20.45	-13.69
Eastern Offshore	344.633	272.955	393.491	282.313	1783.479	1432.211	1958.943	-30.63	-26.89	-20.80
Gujarat Offshore	3.325	7.039	6.006	7.152	16.411	34.107	26.859	17.20	26.99	111.69
Western Offshore	154.110	153.365	193.230	183.555	717.120	842.727	916.833	-20.63	-8.08	-0.48
TOTAL (1+2+3)	2811.845	2674.152	2836.355	2704.635	13567.570	13123.439	13698.780	-5.72	-4.20	-4.90
CBM	83.906	48.235	34.304	46.858	327.721	218.647	162.476	40.61	34.57	-42.51
Onshore	779.116	779.668	752.223	783.361	3896.563	3796.597	3598.655	3.65	5.50	0.07
Offshore	1948.823	1846.249	2049.828	1874.416	9343.285	9108.195	9937.649	-9.93	-8.35	-5.26

Note: Totals may not tally due to rounding off figures.

*: Provisional. **: Revised

CBM: Coal Bed Methane

Reasons for shortfall are indicated in the note.

MINISTRY OF PETROLEUM & NATURAL GAS

Refinery Production (in terms of crude oil processed) during the month of August, 2016 and cumulatively for the period April-August, 2016 vis-à-vis April-August, 2015

(Qty: '000' Tonnes)

Name of Undertaking/Unit	Planned production during the month	Production during the			Cumulative Production			% variation over last year		% variation during the month under review over planned production
		Month under review *	Corresponding month of last year	Preceding month of current year **	(April-August)			During the month under review	Upto the end of the period	
					Planned production during current year	Actual production during current year *	Actual production during corresponding period of last year **			
(1)	(2)	(3)	(4)	(5)	(5)	(6)	(7)	(8)	(9)	(10)
A. Public Sector	10894.004	10985.150	10296.549	11811.694	55625.781	56599.402	50938.727	6.69	11.11	0.84
1. IOC, Guwahati	84.400	66.320	78.504	85.650	416.400	367.978	445.168	-15.52	-17.34	-21.42
2. IOC, Barauni	533.202	570.971	565.999	576.496	2631.605	2830.455	2642.718	0.88	7.10	7.08
3. IOC, Gujarat	1223.593	1228.656	1190.816	1273.444	6139.865	6190.845	5431.429	3.18	13.98	0.41
4. IOC, Haldia	630.100	630.331	667.202	659.372	3374.389	3376.879	3307.386	-5.53	2.10	0.04
5. IOC, Mathura	664.999	701.061	703.472	754.922	3778.502	3864.021	3568.045	-0.34	8.30	5.42
6. IOC, Digboi	59.000	40.318	53.402	23.701	243.000	204.795	238.182	-24.50	-14.02	-31.66
7. IOC, Panipat	1268.009	1048.493	1086.831	1400.066	6513.709	6507.154	6149.961	-3.53	5.81	-17.31
8. IOC, Bongaigaon	196.996	202.454	212.165	214.852	997.807	1043.103	1092.676	-4.58	-4.54	2.77
9. IOC, Paradip	750.000	464.844	0.000	697.353	2539.400	2351.727	0.000	-	-	-38.02
Total IOC	5410.297	4953.448	4558.391	5685.856	26634.676	26736.957	22875.565	8.67	16.88	-8.44
10. BPCL, Mumbai	1166.640	1212.476	1094.920	1210.379	5840.784	5900.906	5550.786	10.74	6.31	3.93
11. BPCL, Kochi	883.333	937.883	938.091	922.786	4370.699	4585.026	4591.333	-0.02	-0.14	6.18
Total BPCL	2049.973	2150.359	2033.011	2133.165	10211.484	10485.932	10142.119	5.77	3.39	4.90
12. HPCL, Mumbai	685.410	736.633	693.288	689.345	3382.830	3488.390	3006.363	6.25	16.03	7.47
13. HPCL, Visakh	461.900	516.592	858.162	731.338	3543.059	3664.560	3458.997	-39.80	5.94	11.84
Total HPCL	1147.310	1253.225	1551.450	1420.683	6925.889	7152.950	6465.360	-19.22	10.63	9.23
14. CPCL, Manali	900.000	960.684	500.876	947.860	4348.000	4412.395	3921.083	91.80	12.53	6.74
15. CPCL, CBR	51.106	45.986	48.287	48.349	251.352	233.123	227.879	-4.77	2.30	-10.02
Total CPCL	951.106	1006.670	549.163	996.209	4599.352	4645.518	4148.962	83.31	11.97	5.84
16. NRL, Numaligarh	231.366	239.041	252.934	236.901	1142.438	1163.624	918.563	-5.49	26.68	3.32
17. MRPL, Mangalore	1100.000	1376.007	1349.041	1331.955	6095.000	6380.132	6366.613	2.00	0.21	25.09
18. ONGC, Tatipaka	3.952	6.400	2.558	6.925	16.942	34.290	21.545	150.14	59.16	61.94
B. Joint Venture Sector	1246.017	1521.600	1557.552	1410.451	6478.729	7358.099	7002.523	-2.31	5.08	22.12
19. BORL, Bina	450.000	587.600	620.193	501.850	2550.000	2771.824	2425.001	-5.26	14.30	30.58
20. HMEL, GGSR, Bhatinda	796.017	934.000	937.358	908.601	3928.729	4586.275	4577.522	-0.36	0.19	17.33
C. Private Sector	7689.742	7783.506	7757.641	7998.793	36385.320	37826.875	36616.403	0.33	3.31	1.22
21. RIL, Jamnagar	2787.694	2778.744	2787.694	2814.023	13081.638	13907.549	13081.638	-0.32	6.31	-0.32
22. RIL, SEZ	3211.048	3223.823	3211.048	3424.507	14848.711	15160.612	14848.711	0.40	2.10	0.40
Total RIL	5998.742	6002.567	5998.742	6238.530	27930.349	29068.161	27930.349	0.06	4.07	0.06
23. EOL, Vadinar	1691.000	1780.939	1758.899	1760.263	8454.971	8758.714	8686.054	1.25	0.84	5.32
TOTAL(A+B+C)	19829.763	20290.256	19611.741	21220.938	98489.830	101784.376	94557.652	3.46	7.64	2.32

Note: Totals may not tally due to rounding off figures. *: Provisional. **: Revised

Reasons for shortfall are indicated in the note.

MINISTRY OF PETROLEUM & NATURAL GAS

(Para 3.4)

Refinery-wise Capacity Utilisation during the month of August, 2016 and cumulatively for the period April-August 2016 vis-à-vis April-August 2015

(Qty: '000' Tonnes)

Name of Undertaking/Unit	August,2016			August,2015			Cumulative (April - August)					
	Prorated Installed Capacity	Actual Crude T'put *	% Utilisation of Installed Capacity	Prorated Installed Capacity	Actual Crude T'put	% Utilisation of Installed Capacity	2016-17			2015-16		
							Prorated Installed Capacity	Actual Crude T'put *	% Utilisation of Installed Capacity	Prorated Installed Capacity	Actual Crude T'put **	% Utilisation of Installed Capacity
(1)	(2)	(3)	(4)	(5)	(6)	(7)	(8)	(9)	(10)	(11)	(12)	(13)
A. Public Sector	11471.00	10985.15	95.76	10170.00	10296.55	101.24	56617.00	56599.40	99.97	50192.00	50938.73	101.49
1. IOC, Guwahati	85.00	66.32	78.02	85.00	78.50	92.36	419.00	367.98	87.82	418.00	445.17	106.50
2. IOC, Barauni	510.00	570.97	111.96	508.00	566.00	111.42	2515.00	2830.46	112.54	2508.00	2642.72	105.37
3. IOC, Gujarat	1164.00	1228.66	105.55	1160.00	1190.82	102.66	5743.00	6190.85	107.80	5727.00	5431.43	94.84
4. IOC, Haldia	637.00	630.33	98.95	635.00	667.20	105.07	3144.00	3376.88	107.41	3135.00	3307.39	105.50
5. IOC, Mathura	679.00	701.06	103.25	678.00	703.47	103.76	3353.00	3864.02	115.24	3344.00	3568.05	106.70
6. IOC, Digboi	55.00	40.32	73.31	55.00	53.40	97.09	272.00	204.80	75.29	272.00	238.18	87.57
7. IOC, Panipat	1274.00	1048.49	82.30	1270.00	1086.83	85.58	6288.00	6507.15	103.49	6270.00	6149.96	98.09
8. IOC, Bongaigaon	200.00	202.45	101.23	199.00	212.17	106.62	985.00	1043.10	105.90	982.00	1092.68	111.27
9. IOC, Paradip	1274.00	464.84	36.49	0.00	0.00	0.00	6288.00	2351.73	37.40	0.00	0.00	0.00
Total IOC	5877.00	4953.45	84.29	4591.00	4558.39	99.29	29007.00	26736.96	92.17	22657.00	22875.57	100.96
10. BPCL, Mumbai	1019.00	1212.48	118.99	1016.00	1094.92	107.77	5030.00	5900.91	117.31	5016.00	5550.79	110.66
11. BPCL, Kochi	807.00	937.88	116.22	805.00	938.09	116.53	3982.00	4585.03	115.14	3971.00	4591.33	115.62
Total BPCL	1826.00	2150.36	117.76	1821.00	2033.01	111.64	9012.00	10485.93	116.36	8988.00	10142.12	112.84
12. HPCL, Mumbai	552.00	736.63	133.45	551.00	693.29	125.82	2725.00	3488.39	128.01	2717.00	3006.36	110.65
13. HPCL, Visakh	705.00	516.59	73.28	703.00	858.16	122.07	3479.00	3664.56	105.33	3470.00	3459.00	99.68
Total HPCL	1257.00	1253.23	99.70	1254.00	1551.45	123.72	6204.00	7152.95	115.30	6187.00	6465.36	104.50
14. CPCL, Manali	892.00	960.68	107.70	889.00	500.88	56.34	4401.00	4412.40	100.26	4389.00	3921.08	89.34
15. CPCL, CBR	85.00	45.99	54.10	85.00	48.29	56.81	419.00	233.12	55.64	418.00	227.88	54.52
Total CPCL	977.00	1006.67	103.04	974.00	549.16	56.38	4821.00	4645.52	96.36	4807.00	4148.96	86.31
16. NRL, Numaligarh	255.00	239.04	93.74	254.00	252.93	99.58	1258.00	1163.62	92.50	1254.00	918.56	73.25
17. MRPL, Mangalore	1274.00	1376.01	108.01	1270.00	1349.04	106.22	6288.00	6380.13	101.47	6270.00	6366.61	101.54
18. ONGC, Tatipaka	6.00	6.40	106.66	6.00	2.56	42.64	28.00	34.29	122.46	28.00	21.54	76.95
B. Joint Venture Sector	1274.00	1521.60	119.43	1270.00	1557.55	122.64	6288.00	7358.10	117.02	6270.00	7002.52	111.68
19. BORL, Bina	510.00	587.60	115.22	508.00	620.19	122.09	2515.00	2771.82	110.21	2508.00	2425.00	96.69
20. HMEL, GGSR, Bhatinda	764.00	934.00	122.25	762.00	937.36	123.01	3773.00	4586.28	121.56	3762.00	4577.52	121.68
C. Private Sector	6795.00	7783.51	114.55	6776.00	7757.64	114.49	33534.00	37826.87	112.80	33443.00	36616.40	109.49
21. RIL, Jamnagar	2803.00	2778.74	99.13	2795.00	2787.69	99.74	13833.00	13907.55	100.54	13795.00	13081.64	94.83
22. RIL, SEZ	2293.00	3223.82	140.59	2287.00	3211.05	140.40	11318.00	15160.61	133.95	11287.00	14848.71	131.56
Total RIL	5096.00	6002.57	117.79	5082.00	5998.74	118.04	25151.00	29068.16	115.57	25082.00	27930.35	111.36
23. EOL, Vadinar	1699.00	1780.94	104.82	1694.00	1758.90	103.83	8384.00	8758.71	104.47	8361.00	8686.05	103.89
TOTAL(A+B+C)	19540.00	20290.26	103.84	18216.00	19611.74	107.66	96439.00	101784.38	105.54	89905.00	94557.65	105.18

*: Provisional. **:Revised

MINISTRY OF PETROLEUM & NATURAL GAS

Production of Petroleum Products during the month of August 2016 and cumulatively for the period April-August 2016 vis-à-vis April-August 2015

(Qty: '000' Tonnes)

Name of Undertaking/Unit	Planned production during the month	Production during the			Cumulative Production			% variation over last year		% variation during the month under review over planned production
		Month under review *	Corresponding month of last year	Preceding month of current year **	(April-August)			During the month under review	Upto the end of the period	
					Planned production during current year	Actual production during current year*	Actual production during corresponding period of last year**			
(1)	(2)	(3)	(4)	(5)	(5)	(6)	(7)	(8)	(9)	(10)
I. Refinery										
A. Public Sector	10142.425	10214.544	9804.221	10969.204	51886.709	52948.937	48008.087	4.19	10.29	0.71
1. IOC, Guwahati	82.563	91.798	106.909	99.489	427.723	482.318	531.332	-14.13	-9.22	11.19
2. IOC, Barauni	488.465	520.608	519.447	499.726	2410.757	2544.214	2442.817	0.22	4.15	6.58
3. IOC, Gujarat	1166.672	1120.554	1158.094	1189.578	5845.614	5788.264	5172.366	-3.24	11.91	-3.95
4. IOC, Haldia	579.567	567.647	615.824	602.840	3070.366	3032.096	3043.058	-7.82	-0.36	-2.06
5. IOC, Mathura	650.679	736.481	635.565	717.610	3637.647	3766.586	3438.633	15.88	9.54	13.19
6. IOC, Digboi	59.640	43.926	52.905	21.747	242.911	210.235	230.415	-16.97	-8.76	-26.35
7. IOC, Panipat	1229.925	958.808	1142.873	1370.881	6467.206	6437.092	6174.450	-16.11	4.25	-22.04
8. IOC, Bongaigaon	178.605	150.618	190.448	179.482	894.202	885.886	981.980	-20.91	-9.79	-15.67
9. IOC, Paradip	647.050	438.308	0.000	513.098	2041.400	1984.764	0.000	-	-	-32.26
Total IOC	5083.166	4628.748	4422.065	5194.451	25037.826	25131.455	22015.051	4.67	14.16	-8.94
10. BPCL, Mumbai	1122.336	1169.329	1044.063	1158.648	5600.423	5669.361	5305.651	12.00	6.86	4.19
11. BPCL, Kochi	813.750	889.437	896.197	874.831	4053.176	4327.061	4347.964	-0.75	-0.48	9.30
Total BPCL	1936.085	2058.766	1940.260	2033.479	9653.599	9996.422	9653.615	6.11	3.55	6.34
12. HPCL, Mumbai	632.768	671.418	668.320	654.643	3123.005	3218.246	2723.853	0.46	18.15	6.11
13. HPCL, Visakh	412.606	445.279	796.128	682.607	3247.886	3342.702	3114.037	-44.07	7.34	7.92
Total HPCL	1045.374	1116.697	1464.448	1337.250	6370.891	6560.948	5837.890	-23.75	12.39	6.82
14. CPCL, Manali	819.583	876.834	442.470	876.465	3960.022	4056.115	3588.975	98.17	13.02	6.99
15. CPCL, CBR	51.457	46.345	49.060	48.799	253.122	234.230	231.487	-5.53	1.18	-9.93
Total CPCL	871.040	923.179	491.530	925.264	4213.144	4290.345	3820.462	87.82	12.30	5.99
16. NRL, Numaligarh	230.261	225.300	257.094	239.068	1140.430	1144.295	895.485	-12.37	27.78	-2.15
17. MRPL, Mangalore	972.600	1255.740	1226.309	1232.961	5454.100	5792.565	5764.514	2.40	0.49	29.11
18. ONGC, Tatipaka	3.900	6.114	2.515	6.731	16.720	32.907	21.070	143.14	56.18	56.78
B. Joint Venture Sector	1164.310	1446.705	1432.910	1325.946	6057.814	6907.084	6514.761	0.96	6.02	24.25
19. BOREL, Bina	415.000	570.705	574.264	420.620	2351.400	2495.937	2187.487	-3.62	14.10	37.52
20. HMEL, GGSR, Bhatinda	749.310	876.000	858.646	905.326	3706.414	4411.147	4327.274	2.02	1.94	16.91
C. Private Sector	7979.810	8085.682	8018.917	8109.909	37741.678	39310.406	37900.436	0.83	3.72	1.33
21. RIL, Jamnagar	2725.828	2866.692	2725.828	2773.075	13092.078	13982.412	13092.078	5.17	6.80	5.17
22. RIL, SEZ	3619.791	3521.156	3619.791	3665.057	16483.578	16897.939	16483.578	-2.72	2.51	-2.72
Total RIL	6345.619	6387.848	6345.619	6438.132	29575.656	30880.351	29575.656	0.67	4.41	0.67
23. EOL, Vadinar	1634.192	1697.834	1673.298	1671.777	8166.022	8430.055	8324.780	1.47	1.26	3.89
TOTAL(A+B+C)	19286.546	19746.931	19256.047	20405.059	95686.200	99166.427	92423.284	2.55	7.30	2.39
II. Fractionators										
ONGC	253.622	263.752	274.125	264.140	1134.524	1261.315	1088.420	-3.78	15.88	3.99
OIL	3.700	2.752	3.425	3.035	15.700	13.692	15.926	-19.65	-14.03	-25.62
GAIL	87.829	94.017	91.164	95.703	427.600	445.273	437.492	3.13	1.78	7.05
D. Total Fractionators	345.151	360.521	368.714	362.878	1577.824	1720.280	1541.838	-2.22	11.57	4.45
Grand Total (A+B+C+D)	19631.696	20107.452	19624.761	20767.936	97264.024	100886.707	93965.122	2.46	7.37	2.42

Note: Totals may not tally due to rounding off figures.

*: Provisional. **: Revised