

Brief note on the Production Performance of Oil & Natural Gas Sector for the month of February, 2016 and cumulatively for the period April, 2015-February, 2016 vis-à-vis April, 2014-February, 2015

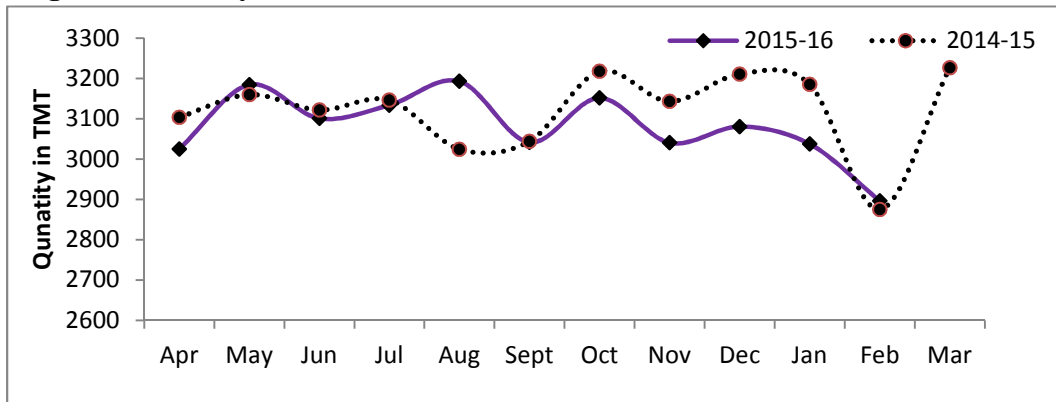
1. Crude Oil Production

1.1 Indigenous crude oil production (including condensate) during February, 2016 was 2896.67 TMT which is 3.37% lower than the target for the month and 0.75% higher than the production during corresponding period of last year. Cumulative crude oil production during April, 2015-February, 2016 was 33887.63 TMT which is 0.17% higher than target for the period and 1.01% lower than the production during corresponding period of last year. Unit-wise and state-wise crude oil production is given at Annexure-I. Unit-wise crude oil production (including condensate) for the month of February, 2016 and cumulatively for the period April, 2015-February, 2016 vis-à-vis same period of last year has been shown in Table-1.1 and month-wise in Figure-1.1

Table 1.1: Crude Oil Production (TMT)

Oil Company	Target	February (Month)				April-February (Cumulative)			
	2015-16 (Apr-Mar)	2015-16		2014-15	% over last year	2015-16		2014-15	% over last year
		Target	Prod.	Prod.		Target	Prod.	Prod.	
ONGC	22732.00	1853.67	1780.73	1705.91	104.39	20741.72	20497.88	20314.95	100.90
OIL	3595.00	292.99	246.21	255.44	96.39	3278.72	2957.19	3122.87	94.69
PSC Fields	10718.74	851.07	869.73	913.69	95.19	9808.98	10432.56	10796.55	96.63
Total	37045.74	2997.72	2896.67	2875.04	100.75	33829.42	33887.63	34234.36	98.99

Figure-1: Monthly Crude Oil Production



1.2 ONGC's crude oil production during February, 2016 was 1780.73 TMT which is 3.93% lower than the target for the month and 4.39% higher than the production achieved in the corresponding month of last year. ONGC's cumulative production during April, 2015-February,

2016 was 20497.88 TMT which is 1.18% lower than the cumulative target and 0.90% higher than the production during the corresponding period of last year. The shortfall in ONGC's production was due to following reason:

- Gujarat, Mehsana: Less air injection in Santhal field, increase in water cut and power shut down.
- Gujarat, Ahmedabad: Delayed / less gain from Gamij field. Power shutdown & lift optimization.
- Gujarat, Cambay: Less than envisaged production from Vadatal-1, NELP field due to increase in water cut to around 80%.
- Assam: Low gas injection pressure, power shutdown & closure of wells.
- Tamilnadu, Karaikal: Less than anticipated production from Madanam field & closure of wells due to less / nil off-take by consumers.
- Mumbai High: Delay in commencement of production from B127 cluster. Less production from Cluster-7 & WO-16 cluster.

1.3 OIL's crude oil production during February, 2016 was 246.21 TMT which is 15.96% lower than the target for the month and 3.61% lower than the production achieved in the corresponding month of last year. OIL's cumulative production during April, 2015-February, 2016 was 2957.19 TMT which is 9.81% lower than the cumulative target and 5.31% lower than the production during the corresponding period of last year. Reasons for shortfall in production are given below:

- Rise in water cut in wells in Salmari, Dikom, Greater Chandmari and Greater Hapjan Fields
- Permanent loss at Makum & Hapjan OCS
- Temporary cessation of flow at well Makum No.48
- Loss of production due to Assam bandh.
- Miscreant activities in a no. of wells affected gas lift operation leading to crude oil production loss.

1.4 Pvt./JVs' crude oil production during February, 2016 was 869.73 TMT which is 2.19% higher than the target for the month and 4.81% lower than production of corresponding month of last year. Pvt./JVs' cumulative production during April, 2015-February, 2016 was 10432.56 TMT which is 6.36% higher than the cumulative target and 3.37% lower than the production during the corresponding period of last year. Reasons for shortfall in production are given below:

- Cairn: Natural decline in Ravva, Mangala and underperformance of Bhagyam wells in RJ-ON-90/1.
- RIL: Under performance of wells in KG-D6.
- GSPC: Well completion issues in KG-OSN-2001/3.
- M&S Tapti field proposed for abandonment.
- GEOENPRO: Sand ingress in Kharsang.

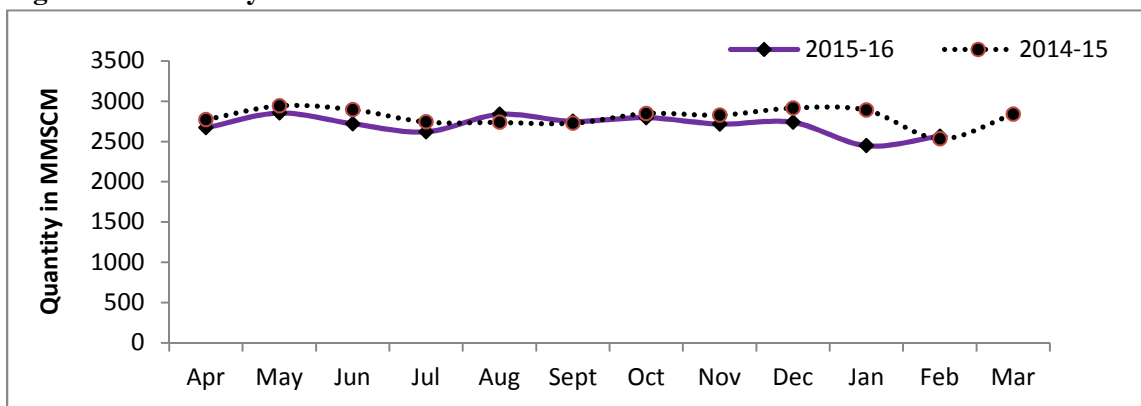
2. Natural Gas Production

2.1 Natural Gas Production during February, 2016 was 2565.01 MMSCM which is 9.83% lower than the target for the month and 1.24% higher than the production during corresponding period of last year. Cumulative natural gas production during April, 2015-February, 2016 was 29709.55 MMSCM which is 7.83% lower than the target for the period and 3.60 lower than the production during corresponding period of last year. Unit-wise and state-wise natural gas production is given at Annexure-II. Unit-wise natural gas production for the month of February, 2016 and cumulatively for the period April, 2015-February, 2016 vis-à-vis same period of last year has been shown in Table-2.1 and month-wise in Figure-2.1.

Table 2.1: Natural Gas Production (MMSCM)

Oil Company	Target	February (Month)				April-February (Cumulative)			
	2015-16 (Apr-Mar)	2015-16		2014-15	% over last year	2015-16		2014-15	% over last year
		Target	Prod.	Prod.		Target	Prod.	Prod.	
ONGC	23908.00	1955.41	1730.87	1657.07	104.45	21816.84	19533.88	20152.46	96.93
OIL	3009.97	234.79	218.48	202.29	108.00	2754.36	2584.26	2490.14	103.78
PSC Fields	8361.91	654.42	615.66	674.17	91.32	7662.36	7591.42	8176.59	92.84
Total	35279.88	2844.62	2565.01	2533.53	101.24	32233.56	29709.55	30819.19	96.40

Figure-2.1: Monthly Natural Gas Production



2.2 ONGC's natural gas production during February, 2016 was 1730.87 MMSCM which is 11.48% lower than the target for the month and 4.45% higher than the production achieved in the corresponding month of last year. ONGC's cumulative natural gas production during April, 2015-February, 2016 was 19533.88 MMSCM which is 10.46% lower than the cumulative target and 3.07% lower than the production during the corresponding period of last year. Reasons for the shortfall are given below:

- Eastern Offshore: Delay in commencement of production from one deep water well (S2AB) planned from June' 15 and restricted withdrawal by GAIL.

- Bassein & Satellite: Consequential losses post BPA shutdown as the wells are yet to achieve original potential. Less than expected production from new development/side track wells and decline in Bassein field.
- Mumbai High: Delay in commencement of production from B127 cluster.
- Gujarat: Closure of wells due to unplanned shut down of GAIL Gas line from Ahmedabad/Kalol to Ramol. Decline in associated gas production from Jhalora South Kadi & Gamji fields.
- Andhra Pradesh: Closure of 36 wells as GAIL pipelines in Tatipaka-Lanco & Endamaru-Oduru sections still under repair.
- Tamil-Nadu: Closure of wells due to less off-take by consumers in Ramnad / Kovilkallapal area in Karaikal.
- Assam: Decline in associated gas production in Geleki, Lakwa & Rudrasagar fields.
- Tripura: Less off take by OTPC, Baramura TSECL & NEEPCO Monarchak, etc.

2.3 OIL's natural gas production during February, 2016 was 218.48 MMSCM which is 6.95% lower than the target for the month and 8.00% higher than the production achieved in the corresponding month of last year. OIL's cumulative natural gas production during April, 2015-February, 2016 was 2584.26 MMSCM which is 6.18% lower than the cumulative target and 3.78% higher than the production during the corresponding period of last year. Reasons for the shortfall are given below:

- Lower upliftment by the consumers like BCPL and BVFCL.

2.4 Pvt. /JVs' natural gas production during February, 2016 was 615.66 MMSCM which is 5.92% lower than the target for the month and 8.68% lower than the production achieved in the corresponding month of last year. Pvt. /JV's cumulative natural gas production during April, 2015-February, 2016 was 7591.42 MMSCM which is 0.93% lower than the cumulative target and 7.16% lower than the production during the corresponding period of last year. Reasons for the shortfall are given below:

- RIL (KG-D6): Underperformance of wells due to sand ingress and water loading.
- GSPC: Well completion issues in KG-OSN-2001/3
- Other operators: Natural Decline in Gas production of Ravva, Panna-Mukta, PY-1 and Hazira. Operator proposed for M&S Tapti's field abandonment. Less off-take by GAIL from RJ-ON/6. Delay in start of production in PY-3
- CBM: De-watering issues in CBM-blocks of Raniganj East, Raniganj South and Sohagpur West.

3. Refinery Production (in terms of Crude oil processed)

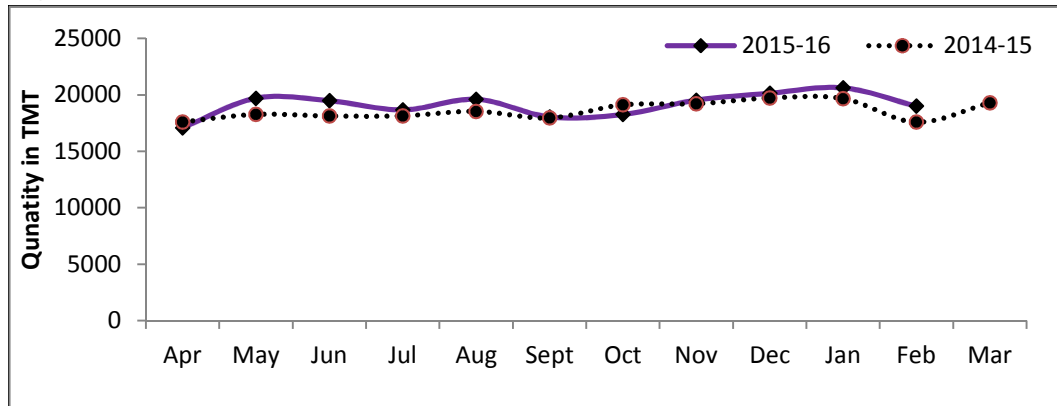
3.1 Refinery production during February, 2016 was 19001.29 TMT which is 4.03% higher than the target for the month and 8.05% higher than the production during corresponding period of last year. Cumulative production during April, 2015-February, 2016 was 210168.73 TMT which is 2.39% higher than the target for the period and 3.05% higher than the production during

corresponding period of last year. Unit-wise production is given at Annexure-III. Unit-wise production for the month of February, 2016 and cumulatively for the period April, 2015-February, 2016 vis-à-vis same period of last year has been shown in Table-3.1 and month-wise in Figure-3.1.

Table 3.1: Refinery Production (TMT)

Oil Company	Target	February (Month)				April-February (Cumulative)			
	2015-16 (Apr-Mar)	2015-16		2014-15	% over last year	2015-16		2014-15	% over last year
		Target	Actual	Actual		Target	Actual	Actual	
IOCL	54999.99	4442.45	4634.72	4169.53	111.16	50163.28	51193.45	48871.18	104.75
BPCL	23197.00	1833.00	1991.94	1873.12	106.34	21220.00	21985.16	21086.22	104.26
HPCL	16199.88	1345.11	1478.51	1361.21	108.62	14761.83	15618.20	14626.99	106.78
CPCL	10800.10	885.88	922.29	838.27	110.02	9851.64	8684.79	9848.95	88.18
NRL	2700.00	223.00	203.01	216.38	93.82	2460.00	2284.12	2592.87	88.09
MRPL	15250.00	1300.00	1325.63	1193.97	111.03	13800.00	13997.16	13146.30	106.47
ONGC	60.88	5.08	7.19	4.15	173.18	55.54	59.67	46.33	128.77
BORL	5200.00	500.00	502.20	465.27	107.94	4700.00	5763.87	5687.13	101.35
HMEL	9000.00	713.11	699.60	538.38	129.94	8237.70	9776.75	6400.06	152.76
RIL	68041.55	5326.66	5566.21	5326.66	104.50	62901.96	63476.14	62901.96	100.91
EOL	18792.76	1690.90	1669.99	1598.31	104.48	17101.86	17329.43	18737.35	92.49
TOTAL	224242.16	18265.20	19001.29	17585.24	108.05	205253.82	210168.73	203945.34	103.05

Figure 3.1: Monthly Refinery Production (TMT)



3.2 PSU Refineries' production during February, 2016 was 10563.29 TMT which is 5.27% higher than the target for the month and 9.39% higher than the production achieved in the corresponding month of last year. Cumulative production of PSUs during April, 2015-February, 2016 was 1113822.54 TMT which is 1.34% higher than the cumulative target and 3.27% higher than the production during the corresponding period of last year. Reasons for shortfalls in PSU refineries are given below:

- ❖ IOCL, Digboi: Throughput restricted due to high intermediate stock built-up.
- ❖ IOCL, Guwahati: Deferment of planned shutdown.
- ❖ NRL, Numaligarh: Restricted throughput due to lower availability of Assam crude.

3.3 Production in JV refineries during February, 2016 was 1201.80 TMT which is 0.93% lower than the target for the month and 19.74% higher than the production achieved in the corresponding month of last year. Cumulative production in JV refineries during April, 2015-February, 2016 was 15540.61 TMT which is 20.12% higher than the cumulative target and 28.57% higher than the production during the corresponding period of last year. Reasons for shortfalls in JV refineries are given below:

- ❖ HMEL, Bhatinda: Planned shutdown of DHDT unit.

3.4 Production in private refineries during February, 2016 was 7236.20 TMT which is 3.12% higher than the target for the month and 4.49% higher than the production achieved in the corresponding month of last year. Cumulative production in private refineries during April, 2015-February, 2016 was 80805.57 TMT which is 1.00% higher than the cumulative target and 1.02% lower than the production during the corresponding period of last year.

3.5 Refinery-wise details of the capacity utilization and Production of petroleum products during the month of February, 2016 and cumulatively for the period April, 2015-February, 2016 vis-à-vis April, 2014-February, 2015 are given at Annexures-IV and V respectively.

Annexure-I

MINISTRY OF PETROLEUM & NATURAL GAS

(Para 1.1)

Review of Crude Oil Production during the month of February, 2016 and cumulatively for the period April, 2015-February, 2016 vis-à-vis April, 2014-February, 2015

(Qty: '000' Tonnes)

Name of Undertaking/Unit/State	Planned production during the month	Production during the			Cumulative Production			% variation over last year		% variation during the month under review over planned production
		Month under review *	Corresponding month of last year	Preceding month of current year	(April - February)			During the month under review	Upto the end of the period	
					Planned production during current year	Actual production during current year **	Actual production during corresponding period of last year			
(1)	(2)	(3)	(4)	(5)	(6)	(7)	(8)	(9)	(10)	(11)
1. ONGC	1853.668	1780.730	1705.909	1832.293	20741.718	20497.883	20314.946	4.39	0.90	-3.93
Onshore	495.411	469.891	449.814	493.713	5580.797	5318.956	5562.861	4.46	-4.38	-5.15
Andhra Pradesh	22.176	22.405	22.391	24.476	256.859	271.671	229.279	0.06	18.49	1.03
Assam ^	86.043	75.926	71.779	80.283	922.623	882.173	980.052	5.78	-9.99	-11.76
Gujarat	365.220	350.750	336.247	367.921	4155.586	3932.246	4138.670	4.31	-4.99	-3.96
Tamil Nadu	21.972	20.810	19.397	21.033	245.729	232.866	214.861	7.28	8.38	-5.29
Offshore	1358.257	1310.839	1256.095	1338.580	15160.921	15178.927	14752.084	4.36	2.89	-3.49
Eastern Offshore	0.835	2.597	1.818	2.963	11.076	25.020	16.154	42.85	54.88	211.02
Western Offshore	1243.204	1196.733	1157.715	1253.583	13871.337	13961.643	13410.138	3.37	4.11	-3.74
Condensates	114.218	111.509	96.562	82.034	1278.508	1192.264	1325.792	15.48	-10.07	-2.37
2. OIL (Onshore)	292.987	246.212	255.441	260.361	3278.724	2957.185	3122.870	-3.61	-5.31	-15.96
Assam	292.321	245.582	254.964	259.750	3272.432	2952.006	3116.308	-3.68	-5.27	-15.99
Arunachal Pradesh	0.666	0.630	0.477	0.611	6.292	5.179	6.562	32.08	-21.08	-5.41
3. DGH (Private / JVC)	851.067	869.727	913.690	944.883	9808.979	10432.562	10796.549	-4.81	-3.37	2.19
Onshore	655.396	682.315	696.741	743.896	7570.275	8085.718	8309.568	-2.07	-2.69	4.11
Arunachal Pradesh	5.546	4.190	4.311	4.422	64.071	46.457	64.413	-2.81	-27.88	-24.46
Gujarat	15.397	11.283	10.047	12.346	177.193	136.847	126.900	12.30	7.84	-26.72
Rajasthan	634.452	665.641	682.383	725.890	7329.011	7896.752	8118.255	-2.45	-2.73	4.92
Tamil Nadu	0.000	1.201	0.000	1.238	0.000	5.662	0.000	-	-	-
Offshore	195.672	187.412	216.949	200.987	2238.704	2346.844	2486.981	-13.61	-5.63	-4.22
Eastern Offshore	99.296	77.533	118.291	83.127	1118.446	1146.655	1231.760	-34.46	-6.91	-21.92
Gujarat Offshore	27.381	32.224	30.156	36.010	316.300	376.805	364.723	6.86	3.31	17.69
Western Offshore	68.995	77.655	68.502	81.850	803.958	823.384	890.498	13.36	-7.54	12.55
GRAND TOTAL (1+2+3)	2997.722	2896.669	2875.040	3037.537	33829.421	33887.630	34234.365	0.75	-1.01	-3.37
Onshore	1443.794	1398.418	1401.996	1497.970	16429.796	16361.859	16995.299	-0.26	-3.73	-3.14
Offshore	1553.929	1498.251	1473.044	1539.567	17399.625	17525.771	17239.065	1.71	1.66	-3.58

Note: Totals may not tally due to rounding off figures.

^: Includes crude oil production of Tripura

*: Provisional. **: Revised

Reasons for shortfall are indicated in the note.

MINISTRY OF PETROLEUM & NATURAL GAS

Review of Natural Gas Production during the month of February, 2016 and cumulatively for the period April, 2015-February, 2016 vis-à-vis April, 2014-February, 2015

(Qty: Million Cubic Meters)

Name of Undertaking/Unit/State	Planned production during the month	Production during the			Cumulative Production (April - February)			% variation over last year		% variation during the month under review over planned production
		Month under review *	Corresponding month of last year	Preceding month of current year	Planned production during current year	Actual production during current year	Actual production during corresponding period of last year	During the month under review	Upto the end of the period	
(1)	(2)	(3)	(4)	(5)	(6)	(7)	(8)	(9)	(10)	(11)
1. ONGC	1955.415	1730.869	1657.073	1530.864	21816.843	19533.876	20152.460	4.45	-3.07	-11.48
Onshore	439.288	388.313	359.450	395.163	4892.665	4334.357	4325.125	8.03	0.21	-11.60
Andhra Pradesh	71.752	57.046	45.671	55.218	730.893	556.978	486.082	24.91	14.59	-20.50
Assam	39.715	32.609	32.438	32.663	430.150	368.111	413.552	0.53	-10.99	-17.89
Gujarat	96.987	113.364	106.613	116.490	1119.713	1272.576	1306.360	6.33	-2.59	16.89
Rajasthan	1.189	0.182	0.788	0.038	13.730	4.771	5.326	-76.90	-10.43	-84.69
Tamil Nadu	104.666	74.555	81.615	73.951	1157.115	922.002	1091.554	-8.65	-15.53	-28.77
Tripura	124.979	110.557	92.325	116.803	1441.064	1209.919	1022.251	19.75	18.36	-11.54
Offshore	1516.127	1342.556	1297.623	1135.701	16924.178	15199.519	15827.334	3.46	-3.97	-11.45
Eastern Offshore	67.898	22.047	19.421	21.955	724.994	204.692	97.170	13.52	110.65	-67.53
Western Offshore	1448.229	1320.509	1278.202	1113.746	16199.184	14994.827	15730.165	3.31	-4.67	-8.82
2. OIL	234.790	218.477	202.288	245.717	2754.356	2584.255	2490.139	8.00	3.78	-6.95
Assam	212.916	201.129	183.967	231.485	2523.924	2388.455	2299.880	9.33	3.85	-5.54
Arunachal Pradesh	1.084	0.932	0.973	0.996	12.652	10.436	10.821	-4.21	-3.56	-14.02
Rajasthan	20.790	16.416	17.348	13.236	217.780	185.364	179.438	-5.37	3.30	-21.04
3. DGH (Private / JVC)	654.419	615.660	674.165	670.802	7662.357	7591.423	8176.590	-8.68	-7.16	-5.92
Onshore	79.175	95.406	88.887	112.404	914.605	1136.335	990.065	7.33	14.77	20.50
Arunachal Pradesh	0.879	1.341	1.622	1.392	10.151	16.844	19.831	-17.32	-15.06	52.61
Gujarat	5.859	6.888	7.067	7.334	67.678	83.439	94.137	-2.53	-11.36	17.57
Rajasthan	72.437	87.067	80.198	103.560	836.776	1035.551	876.097	8.57	18.20	20.20
Tamil Nadu	0.000	0.110	0.000	0.118	0.000	0.501	0.000	-	-	-
CBM	48.968	32.821	19.645	33.195	565.661	356.660	204.400	67.07	74.49	-32.97
Jharkhand (CBM)	0.278	0.201	0.216	0.175	3.209	1.467	2.303	-6.94	-36.30	-27.65
Madhya Pradesh (CBM)	3.451	0.274	0.073	0.141	39.870	1.588	1.977	275.34	-19.68	-92.06
West Bengal (CBM)	45.238	32.346	19.356	32.879	522.582	353.605	200.120	67.11	76.70	-28.50
Offshore	526.276	487.433	565.633	525.203	6182.091	6098.428	6982.125	-13.83	-12.66	-7.38
Eastern Offshore	384.399	306.429	367.708	335.037	4433.095	4041.112	4529.832	-16.67	-10.79	-20.28
Gujarat Offshore	3.312	5.680	4.235	5.888	38.260	61.787	105.856	34.12	-41.63	71.50
Western Offshore	138.565	175.324	193.690	184.278	1710.737	1995.529	2346.437	-9.48	-14.95	26.53
TOTAL (1+2+3)	2844.624	2565.006	2533.526	2447.383	32233.556	29709.554	30819.189	1.24	-3.60	-9.83
CBM	48.968	32.821	19.645	33.195	565.661	356.660	204.400	67.07	74.49	-32.97
Onshore	753.252	702.196	650.625	753.284	8561.625	8054.947	7805.329	7.93	3.20	-6.78
Offshore	2042.404	1829.989	1863.256	1660.904	23106.269	21297.947	22809.459	-1.79	-6.63	-10.40

Note: Totals may not tally due to rounding off figures.

*: Provisional. **: Revised

CBM: Coal Bed Methane production.

Reasons for shortfall are indicated in the note.

MINISTRY OF PETROLEUM & NATURAL GAS

Review of Refinery Crude Throughput (in terms of crude oil processed) during the month of February, 2016 and cumulatively for the period April, 2015-February, 2016 vis-à-vis April, 2014-February, 2015

(Qty: '000' Tonnes)

Name of Undertaking/Unit	Planned production during the month	Production during the			Cumulative Production			% variation		% variation during the month under review over planned production
		Month under review *	Corresponding month of last year	Preceding month of current year	(April - February)			over last year		
					Planned production during current year	Actual production during current year **	Actual production during corresponding period of last year	During the month under review	Upto the end of the period	
(1)	(2)	(3)	(4)	(5)	(6)	(7)	(8)	(9)	(10)	(11)
A. Public Sector	10034.519	10563.289	9656.623	11301.753	112312.293	113822.543	110218.841	9.39	3.27	5.27
1. IOC, Guwahati	75.000	37.799	71.174	40.265	910.000	818.880	910.987	-46.89	-10.11	-49.60
2. IOC, Barauni	499.159	506.437	457.605	561.590	5766.420	5977.994	5408.357	10.67	10.53	1.46
3. IOC, Gujarat	1136.918	1177.495	1037.217	1188.978	12079.852	12551.368	12284.269	13.52	2.17	3.57
4. IOC, Haldia	625.000	640.624	600.282	722.924	7100.000	7120.190	6988.120	6.72	1.89	2.50
5. IOC, Mathura	656.000	739.980	648.208	770.797	7700.000	8046.074	7677.934	14.16	4.79	12.80
6. IOC, Digboi	51.000	44.029	46.292	43.004	599.000	502.830	567.093	-4.89	-11.33	-13.67
7. IOC, Panipat	1207.692	1296.625	1108.893	1357.204	13862.912	13936.350	12857.397	16.93	8.39	7.36
8. IOC, Bongaigaon	191.685	191.727	199.860	200.447	2145.095	2239.759	2177.026	-4.07	2.88	0.02
Total IOC	4442.454	4634.716	4169.531	4885.209	50163.279	51193.445	48871.183	11.16	4.75	4.33
9. BPCL, Mumbai	1043.000	1119.300	1034.502	1137.129	11820.000	12197.052	11642.274	8.20	4.77	7.32
10. BPCL, Kochi	790.000	872.640	838.613	924.766	9400.000	9788.105	9443.946	4.06	3.64	10.46
Total BPCL	1833.000	1991.940	1873.115	2061.895	21220.000	21985.157	21086.220	6.34	4.26	8.67
11. HPCL, Mumbai	592.637	695.799	633.581	748.928	6466.396	7237.559	6699.880	9.82	8.03	17.41
12. HPCL, Visakh	752.468	782.712	727.624	856.699	8295.438	8380.638	7927.108	7.57	5.72	4.02
Total HPCL	1345.105	1478.510	1361.205	1605.627	14761.834	15618.197	14626.988	8.62	6.78	9.92
13. CPCL, Manali	847.500	867.669	800.013	895.457	9394.100	8198.977	9359.440	8.46	-12.40	2.38
14. CPCL, Narimanam(CBR)	38.380	54.618	38.257	55.588	457.540	485.815	489.514	42.77	-0.76	42.31
Total CPCL	885.880	922.287	838.270	951.045	9851.640	8684.792	9848.954	10.02	-11.82	4.11
15. NRL, Numaligarh	223.000	203.014	216.382	233.934	2460.000	2284.124	2592.869	-6.18	-11.91	-8.96
16. MRPL, Mangalore	1300.000	1325.628	1193.967	1557.272	13800.000	13997.162	13146.295	11.03	6.47	1.97
17. ONGC, Tatipaka	5.080	7.193	4.153	6.772	55.540	59.665	46.333	73.18	28.77	41.61
B. Joint Venture Sub Total	1213.115	1201.799	1003.650	1419.310	12937.705	15540.613	12087.191	19.74	28.57	-0.93
18. BORL, Bina	500.000	502.203	465.267	601.412	4700.000	5763.867	5687.131	7.94	1.35	0.44
19. HMEL, GGSR, Bhatinda	713.115	699.596	538.383	817.898	8237.705	9776.745	6400.060	29.94	52.76	-1.90
C. Private Sector	7017.562	7236.202	6924.967	7902.937	80003.819	80805.573	81639.307	4.49	-1.02	3.12
20. RIL, Jamnagar	2498.974	2578.040	2498.974	2840.777	28882.660	29612.917	28882.659	3.16	2.53	3.16
21. RIL, SEZ	2827.688	2988.174	2827.688	3280.618	34019.300	33863.227	34019.300	5.68	-0.46	5.68
Total RIL	5326.662	5566.214	5326.662	6121.395	62901.960	63476.144	62901.959	4.50	0.91	4.50
22. Essar Oil Ltd.(EOL), Vadinar	1690.900	1669.988	1598.305	1781.542	17101.859	17329.429	18737.348	4.48	-7.51	-1.24
TOTAL(A+B+C)	18265.196	19001.290	17585.240	20624.000	205253.816	210168.728	203945.339	8.05	3.05	4.03

Note: may December not tally due to rounding off figures.

*: Provisional.

**: Revised

Reasons for shortfall are indicated in the note.

MINISTRY OF PETROLEUM & NATURAL GAS

Refinery-wise Capacity Utilisation during the month of February, 2016 and cumulatively for the period April, 2015-February, 2016 vis-à-vis April, 2014-February, 2015

(Qty: '000' Tonnes)

Name of Undertaking/Unit	February, 2016			February, 2015			Cumulative (April - February)					
	Prorated Installed Capacity	Actual Crude T'put *	% Utilisation of I/C	Prorated Installed Capacity	Actual Crude T'put	% Utilisation of I/C	2015-16			2014-15		
							Prorated Installed Capacity	Actual Crude T'put *	% Utilisation of I/C	Prorated Installed Capacity	Actual Crude T'put	% Utilisation of I/C
(1)	(2)	(3)	(4)	(5)	(6)	(7)	(8)	(9)	(10)	(11)	(12)	(13)
A. Public Sector	9513.000	10563.289	111.04	9211.000	9656.623	104.84	109896.000	113822.543	103.57	109869.000	110218.841	100.32
1. IOC, Guwahati	79.000	37.799	47.85	77.000	71.174	92.43	915.000	818.880	89.50	915.000	910.987	99.56
2. IOC, Barauni	475.000	506.437	106.62	460.000	457.605	99.48	5492.000	5977.994	108.85	5490.000	5408.357	98.51
3. IOC, Koyali	1086.000	1177.495	108.42	1051.000	1037.217	98.69	12540.000	12551.368	100.09	12536.000	12284.269	97.99
4. IOC, Haldia	594.000	640.624	107.85	575.000	600.282	104.40	6865.000	7120.190	103.72	6863.000	6988.120	101.82
5. IOC, Mathura	634.000	739.980	116.72	614.000	648.208	105.57	7322.000	8046.074	109.89	7321.000	7677.934	104.88
6. IOC, Digboi	52.000	44.029	84.67	50.000	46.292	92.58	595.000	502.830	84.51	595.000	567.093	95.31
7. IOC, Panipat	1189.000	1296.625	109.05	1151.000	1108.893	96.34	13730.000	13936.350	101.50	13726.000	12857.397	93.67
8. IOC, Bongaigaon	186.000	191.727	103.08	180.000	199.860	111.03	2151.000	2239.759	104.13	2150.000	2177.026	101.26
Total IOC	4295.000	4634.716	107.91	4158.000	4169.531	100.28	49609.000	51193.445	103.19	49597.000	48871.183	98.54
9. BPCL, Mumbai	951.000	1119.300	117.70	921.000	1034.502	112.32	10984.000	12197.052	111.04	10981.000	11642.274	106.02
10. BPCL, Kochi	753.000	872.640	115.89	729.000	838.613	115.04	8695.000	9788.105	112.57	8693.000	9443.946	108.64
Total BPCL	1704.000	1991.940	116.90	1649.000	1873.115	0.00	19679.000	21985.157	111.72	19674.000	21086.220	107.18
12. HPCL, Mumbai	515.000	695.799	135.11	499.000	465.267	93.24	5949.000	7237.559	121.66	5948.000	6699.880	112.64
13. HPCL, Visakh	658.000	782.712	118.95	637.000	727.624	114.23	7597.000	8380.638	110.32	7595.000	7927.108	104.37
Total HPCL	1173.000	1478.510	126.05	1135.000	1361.205	119.93	13546.000	15618.197	115.30	13543.000	14626.988	108.00
14. CPCL, Manali	832.000	867.669	104.29	805.000	800.013	99.38	9611.000	8198.977	85.31	9608.000	9359.440	97.41
15. CPCL, Narimanam	79.000	54.618	69.14	77.000	38.257	49.68	915.000	485.815	53.09	915.000	489.514	53.50
Total CPCL	911.000	922.287	101.24	882.000	838.270	95.04	10526.000	8684.792	82.51	10523.000	9848.954	93.59
16. NRL, Numaligarh	238.000	203.014	85.30	230.000	216.382	94.08	2746.000	2284.124	83.18	2745.000	2592.869	94.46
17. MRPL, Mangalore	1189.000	1325.628	111.49	1151.000	1193.967	103.73	13730.000	13997.162	101.95	13726.000	13146.295	95.78
18. ONGC, Tatipaka	5.000	7.193	143.86	5.000	4.153	83.07	60.000	59.665	99.44	60.000	46.333	77.22
B. Joint Venture Sub Total	1189.000	1201.799	101.08	1151.000	1003.650	87.20	13730.000	15540.613	113.19	13726.000	12087.191	88.06
18. BORL, Bina	475.000	502.203	105.73	460.000	465.267	101.14	5492.000	5763.867	104.95	5490.000	5687.131	103.59
19. HMEL, GGSR, Bhatinda	713.000	699.596	98.12	690.000	538.383	78.03	8238.000	9776.745	118.68	8236.000	6400.060	77.71
C. Private Sector	6339.000	7236.202	114.15	6137.000	6924.967	112.84	73224.000	80805.573	110.35	73205.000	81639.307	111.52
20. RIL, Jamnagar	2615.000	2578.040	98.59	2532.000	2498.974	98.70	30205.000	29612.917	98.04	30197.000	28882.659	95.65
21. RIL, SEZ	2139.000	2988.174	139.70	2071.000	2827.688	136.54	24713.000	33863.227	137.03	24707.000	34019.300	137.69
Total RIL	4754.000	5566.214	117.08	4603.000	5326.662	115.72	54918.000	63476.144	115.58	54904.000	62901.959	114.57
22. Essar Oil Ltd.(EOL), Vadinar	1585.000	1669.988	105.36	1534.000	1598.305	104.19	18306.000	17329.429	94.67	18301.000	18737.348	102.38
TOTAL	17041.000	19001.290	111.50	16498.000	17585.240	106.59	196850.000	210168.728	106.77	196800.000	203945.339	103.63

*: Provisional.

I/C: Installed Capacity.

MINISTRY OF PETROLEUM & NATURAL GAS

Review of Production of Petroleum Products during the month of February, 2016 and cumulatively for the period April, 2015-February, 2016 vis-à-vis April, 2014-February, 2015

(Qty: '000' Tonnes)

Name of Undertaking/Unit	Planned production during the month	Production during the			Cumulative Production			% variation over last year		% variation during the month under review over planned production
		Month under review *	Corresponding month of last year	Preceding month of current year **	(April - February)			During the month under review	Upto the end of the period	
					Planned production during current year	Actual production during current year	Actual production during corresponding period of last year			
(1)	(2)	(3)	(4)	(5)	(6)	(7)	(8)	(9)	(10)	(11)
I. Refinery										
A. Public Sector	9400.544	10250.519	9217.635	10238.947	104639.310	108012.161	104088.060	11.21	3.77	9.04
1. IOC, Guwahati	68.169	37.569	75.966	92.978	800.054	997.407	960.299	-50.54	3.86	-44.89
2. IOC, Barauni	453.490	470.416	432.452	566.988	5264.779	5543.653	4910.550	8.78	12.89	3.73
3. IOC, Koyali, Gujarat	1090.223	1137.555	1008.507	1177.881	11369.154	12030.949	11578.903	12.80	3.90	4.34
4. IOC, Haldia	566.600	598.972	517.665	651.873	6446.544	6506.734	6410.285	15.71	1.50	5.71
5. IOC, Mathura	639.156	751.047	643.243	766.866	7493.899	7858.149	7480.122	16.76	5.05	17.51
6. IOC, Digboi	53.555	44.374	45.480	38.633	589.393	483.970	565.658	-2.43	-14.44	-17.14
7. IOC, Panipat	1159.329	1360.878	1090.437	1265.438	13153.846	14050.654	12788.555	24.80	9.87	17.38
8. IOC, Bongaigaon	179.083	181.782	195.615	210.152	1934.814	2038.617	1974.456	-7.07	3.25	1.51
Total IOC	4209.606	4582.593	4009.365	4770.809	47052.484	49510.133	46668.828	14.30	6.09	8.86
9. BPCL, Mumbai	1002.350	1082.597	998.972	1062.159	11302.830	11661.256	11218.958	8.37	3.94	8.01
10. BPCL, Kochi	744.500	829.165	777.626	885.899	8734.600	9273.615	8895.677	6.63	4.25	11.37
Total BPCL	1746.850	1911.762	1776.598	1948.058	20037.430	20934.871	20114.634	7.61	4.08	9.44
11. HPCL, Mumbai	555.473	653.151	605.808	664.453	6062.141	6741.895	6379.171	7.81	5.69	17.58
12. HPCL, Visakh	693.568	754.850	685.079	763.864	7644.222	7734.364	7460.011	10.18	3.68	8.84
Total HPCL	1249.041	1408.001	1290.887	1428.317	13706.363	14476.259	13839.182	9.07	4.60	12.73
13. CPCL, Manali	774.354	821.767	741.222	455.103	8543.197	7490.741	8587.128	10.87	-12.77	6.12
14. CPCL, Narimanam(CBR)	39.031	54.562	38.694	20.219	465.306	492.399	496.150	41.01	-0.76	39.79
Total CPCL	813.385	876.329	779.916	475.322	9008.503	7983.140	9083.278	12.36	-12.11	7.74
15. NRL, Numaligarh	207.955	201.476	215.012	233.033	2373.665	2269.830	2558.124	-6.30	-11.27	-3.12
16. MRPL, Mangalore	1168.700	1263.293	1141.759	1376.405	12406.130	12779.277	11778.351	10.64	8.50	8.09
17. ONGC, Tatipaka	5.006	7.065	4.097	7.003	54.735	58.651	45.662	72.44	28.44	41.13
B. Joint Venture Sub Total	1130.906	1091.976	914.647	1302.229	12073.140	14380.838	11295.890	19.39	27.31	-3.44
18. BORL Bina	457.500	480.325	390.339	451.083	4300.500	5279.948	5242.418	23.05	0.72	4.99
19. HMEL, GGSR, Bhatinda	673.406	611.652	524.308	851.146	7772.640	9100.890	6053.472	16.66	50.34	-9.17
C. Private Sector	7323.584	7493.025	7222.934	8139.376	81489.701	83888.187	83005.097	3.74	1.06	2.31
1. RIL, Jamnagar	2555.963	2533.743	2555.963	2831.424	28734.204	29692.673	28734.529	-0.87	3.33	-0.87
2. RIL (SEZ)	3128.516	3423.621	3128.516	3553.169	36189.326	37623.849	36189.326	9.43	3.96	9.43
Total RIL	5684.479	5957.364	5684.479	6384.593	64923.530	67316.523	64923.854	4.80	3.69	4.80
3. Essar Oil Ltd.(EOL), Vadinar	1639.105	1535.661	1538.455	1754.783	16566.172	16571.664	18081.243	-0.18	-8.35	-6.31
Total Refinery (A+B+C)	17855.033	18835.520	17355.217	19680.552	198202.151	206281.186	198389.047	8.53	3.98	5.49
II. Fractionators										
ONGC	276.182	268.757	177.083	269.930	2990.858	2653.697	2445.229	51.77	8.53	-2.69
OIL	3.800	3.501	3.776	3.738	40.000	37.429	39.637	-7.28	-5.57	-7.87
GAIL	93.022	97.618	94.414	96.950	1074.563	998.839	1182.742	3.39	-15.55	4.94
D. Total Fractionators	373.004	369.876	275.273	370.618	4105.421	3689.965	3667.608	34.37	0.61	-0.84
Grand Total (A+B+C+D)	18228.037	19205.397	17630.489	20051.170	202307.572	209971.151	202056.655	8.93	3.92	5.36

Note: Totals may not tally due to rounding off figures.

*: Provisional. **: Revised