

Brief note on the Production Performance of Oil & Natural Gas Sector for the month of March, 2016 and cumulatively for the period April, 2015-March, 2016 vis-à-vis April, 2014-March, 2015

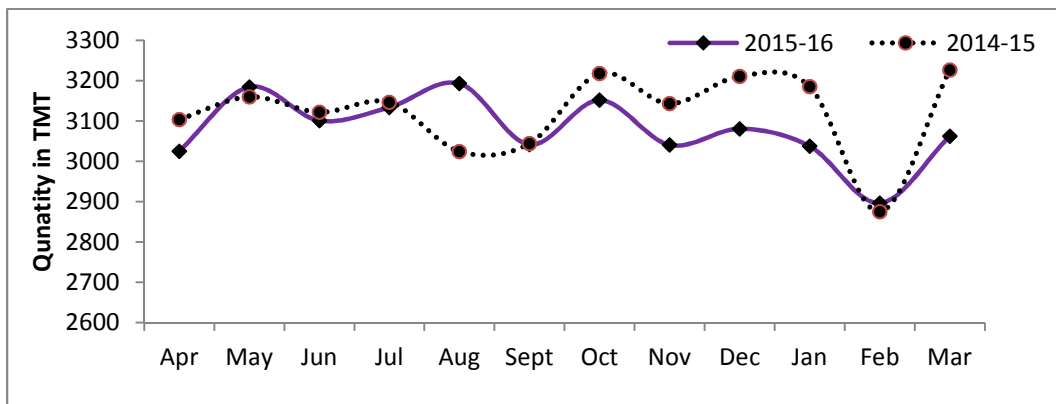
1. Crude Oil Production

1.1 Indigenous crude oil production (including condensate) during March, 2016 was 3062.36 TMT which is 4.79% lower than the target for the month and 5.09% lower than the production during corresponding period of last year. Cumulative crude oil production during April, 2015-March, 2016 was 36949.99 TMT which is 0.26% lower than target for the period and 1.36% lower than the production during corresponding period of last year. Unit-wise and state-wise crude oil production is given at Annexure-I. Unit-wise crude oil production (including condensate) for the month of March, 2016 and cumulatively for the period April, 2015-March, 2016 vis-à-vis same period of last year has been shown in Table-1.1 and month-wise in Figure-1.1

Table 1.1: Crude Oil Production (TMT)

Oil Company	Target	March (Month)				April-March (Cumulative)			
	2015-16 (Apr-Mar)	2015-16		2014-15	% over last year	2015-16		2014-15	% over last year
		Target	Prod.	Prod.		Target	Prod.	Prod.	
ONGC	22732.00	1990.28	1870.06	1948.74	95.96	22732.00	22367.94	22263.69	100.47
OIL	3595.00	316.28	268.85	289.23	92.95	3595.00	3226.04	3412.10	94.55
PSC Fields	10718.74	909.76	923.45	988.67	93.40	10718.74	11356.01	11785.21	96.36
Total	37045.74	3216.32	3062.36	3226.64	94.91	37045.74	36949.99	37461.00	98.64

Figure-1: Monthly Crude Oil Production



1.2 ONGC's crude oil production during March, 2016 was 1870.06 TMT which is 6.04% lower than the target for the month and 4.04% lower than the production achieved in the corresponding month of last year. ONGC's cumulative production during April, 2015-March, 2016 was 22367.94 TMT which is 1.60% lower than the cumulative target and 0.47% higher than the production during the corresponding period of last year. The shortfall in ONGC's production was due to following reason:

- ❖ Mumbai High: Delay in commencement of production from B127 cluster. Less production from Cluster-7 & WO-16 cluster.
- ❖ Less condensate due to less gas receipt as BPB under shutdown since 14th Mar'16.
- ❖ Onshore lower by 6.2% w.r.t. target:
- ❖ Mehsana: Less air injection in Santhal and Lanwa fields, increase in water cut and power shut down.
- ❖ Ahmedabad: Delayed / less gain from Gamij field. Power shutdown & lift optimization.
- ❖ Assam: Low gas injection pressure, power shutdown & closure of wells.
- ❖ Karaikal: Less than anticipated production from Madanam field. Closure of wells in Ramnad area due to less offtake.

1.3 OIL's crude oil production during March, 2016 was 268.85 TMT which is 15.00% lower than the target for the month and 7.05% lower than the production achieved in the corresponding month of last year. OIL's cumulative production during April, 2015-March, 2016 was 3226.04 TMT which is 10.26% lower than the cumulative target and 5.45% lower than the production during the corresponding period of last year. Reasons for shortfall in production are given below:

- ❖ Rise in water cut in wells in Salmari, Dikom, Greater Chandmari and Greater Hapjan Fields
- ❖ Permanent loss at Makum & Hapjan OCS
- ❖ Loss of production due to Assam bandh on 31st Mar'16.
- ❖ Lower than envisaged production from work over and drilling of wells.

1.4 Pvt. /JVs' crude oil production during March, 2016 was 923.45 TMT which is 1.50% higher than the target for the month and 6.60% lower than production of corresponding month of last year. Pvt./JVs' cumulative production during April, 2015-March, 2016 was 11356.01 TMT which is 5.95% higher than the cumulative target and 3.64% lower than the production during the corresponding period of last year. Reasons for shortfall in production are given below:

- ❖ Cairn: Natural decline in Ravva, Mangala and underperformance of Bhagyam wells in RJ-ON-90/1
- ❖ RIL: Under performance of wells in KG-D6
- ❖ GSPC: Well completion issues in KG-OSN-2001/3 and higher water cut in CB-ONN-2000/1
- ❖ M&S Tapti field proposed for abandonment & sand ingress in Kharsang

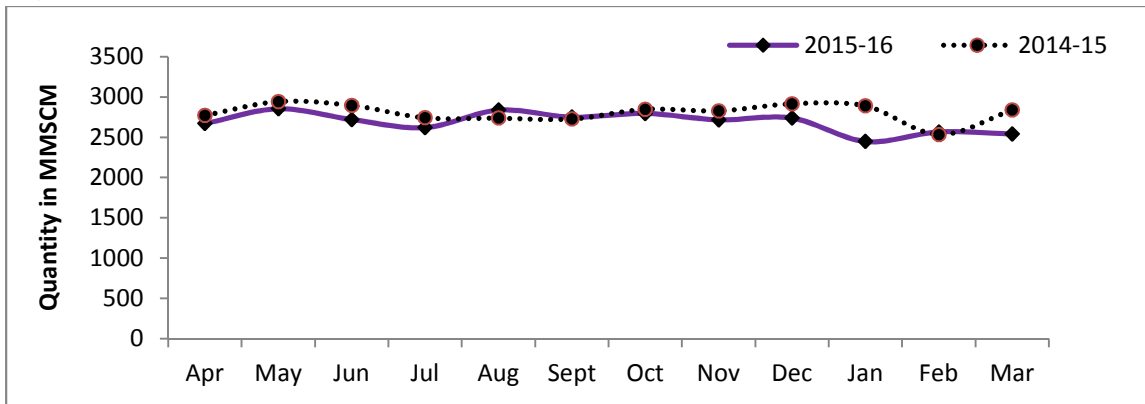
2. Natural Gas Production

2.1 Natural Gas Production during March, 2016 was 2539.65 MMSCM which is 16.63% lower than the target for the month and 10.48% lower than the production during corresponding period of last year. Cumulative natural gas production during April, 2015-March, 2016 was 32249.21 MMSCM which is 8.59% lower than the target for the period and 4.18% lower than the production during corresponding period of last year. Unit-wise and state-wise natural gas production is given at Annexure-II. Unit-wise natural gas production for the month of March, 2016 and cumulatively for the period April, 2015-March, 2016 vis-à-vis same period of last year has been shown in Table-2.1 and month-wise in Figure-2.1.

Table 2.1: Natural Gas Production (MMSCM)

Oil Company	Target	March (Month)				April-March (Cumulative)			
	2015-16 (Apr-Mar)	2015-16		2014-15	% over last year	2015-16		2014-15	% over last year
		Target	Prod.	Prod.		Target	Prod.	Prod.	
ONGC	23908.00	2091.16	1642.76	1869.66	87.86	23908.00	21176.64	22022.12	96.16
OIL	3009.97	255.62	253.68	232.07	109.31	3009.97	2837.94	2722.21	104.25
PSC Fields	8361.91	699.55	643.21	735.35	87.47	8361.91	8234.63	8911.94	92.40
Total	35279.88	3046.33	2539.65	2837.08	89.52	35279.88	32249.21	33656.27	95.82

Figure-2.1: Monthly Natural Gas Production



2.2 ONGC's natural gas production during March, 2016 was 1642.76 MMSCM which is 21.44% lower than the target for the month and 12.14% lower than the production achieved in the corresponding month of last year. ONGC's cumulative natural gas production during April, 2015-March, 2016 was 21176.64 MMSCM which is 11.42% lower than the cumulative target and 3.84% lower than the production during the corresponding period of last year. Reasons for the shortfall are given below:

- ❖ Bassein & Satellite: BPB under shutdown since 14th Mar'16 for carrying out reconstruction activities under "Reconstruction of BPA & BPB Platforms "Project.

- Less than expected production from new development/side track wells, decline in production from Bassein field.
- ❖ Mumbai High: Delay in commencement of production from new and marginal fields.
 - ❖ Eastern Offshore: Delay in commencement of production from one deep water well (S2AB) that was planned from June'15. Hook-up of well with G1 facilities is in progress for which both the sub-sea wells of G1 field are closed since 9th Mar'16.
 - ❖ Ahmedabad: Closure of wells due to unplanned shut down of GAIL Gas line from Ahmedabad/Kalol to Ramol.
 - ❖ Decline in associated gas production from Jhalora, South Kadi & Gamji fields
 - ❖ Rajahmundry: Closure of 36 wells as GAIL pipelines in Tatipaka-Lanco & Endamaru-Oduru sections still under repair.
 - ❖ Assam: Decline in associated gas production in Geleki, Lakwa & Rudrasagar fields
 - ❖ Tripura: Less off take by OTPC, TSECL Baramura & NEEPCO Monarchak etc.
 - ❖ Cauvery: Closure of wells due to less off-take by consumers in Ramnad / Kovilkallapal area in Karaikal.

2.3 OIL's natural gas production during March, 2016 was 253.68 MMSCM which is 0.76% lower than the target for the month and 9.31% higher than the production achieved in the corresponding month of last year. OIL's cumulative natural gas production during April, 2015-March, 2016 was 2837.94 MMSCM which is 5.72% lower than the cumulative target and 4.25% higher than the production during the corresponding period of last year. Reasons for the shortfall are given below:

- ❖ Lower upliftment by the consumers like BCPL and BVFCL.

2.4 Pvt. /JVs' natural gas production during March, 2016 was 643.21 MMSCM which is 8.05% lower than the target for the month and 12.53% lower than the production achieved in the corresponding month of last year. Pvt. /JV's cumulative natural gas production during April, 2015-March, 2016 was 8234.63 MMSCM which is 1.52% lower than the cumulative target and 7.60% lower than the production during the corresponding period of last year. Reasons for the shortfall are given below:

- ❖ Underperformance of wells due to sand ingress and water loading in KG-D6 of RIL.
- ❖ Well completion issues in KG-OSN-2001/3 and increase in water cut in existing wells in CB-ON/2 block of GSPC
- ❖ M&S Tapti: Production stopped in March 2016.
- ❖ Natural decline in gas production from Ravva, Panna-Mukta, PY-1 and Hazira.
- ❖ Dewatering issues in CBM blocks in Raniganj East, Raniganj South and Sohagpur West.
- ❖ 4 days planned shutdown in RJ-ON/6
- ❖ Delay in start of production in PY-3.

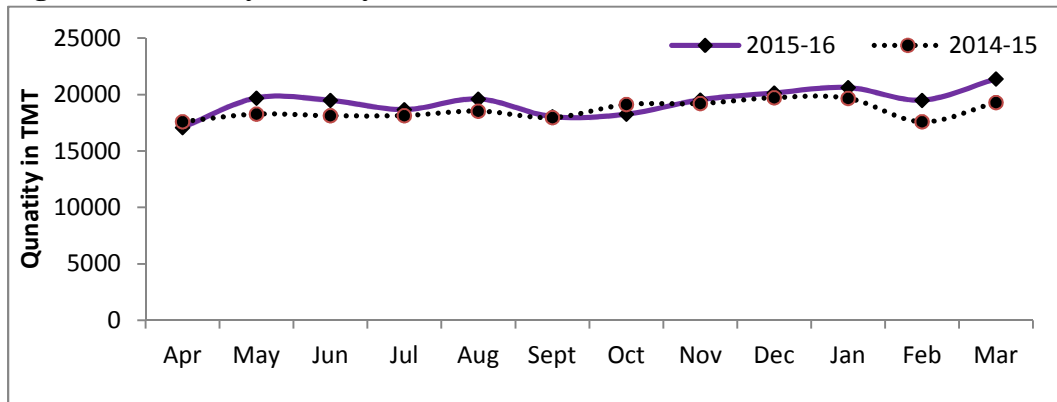
3. Refinery Production (in terms of Crude oil processed)

3.1 Refinery production during March, 2016 was 21383.07 TMT which is 9.72% higher than the target for the month and 10.81% higher than the production during corresponding period of last year. Cumulative production during April, 2015-March, 2016 was 232054.89 TMT which is 3.48% higher than the target for the period and 3.95% higher than the production during corresponding period of last year. Unit-wise production is given at Annexure-III. Unit-wise production for the month of March, 2016 and cumulatively for the period April, 2015-March, 2016 vis-à-vis same period of last year has been shown in Table-3.1 and month-wise in Figure-3.1.

Table 3.1: Refinery Production (TMT)

Oil Company	Target	March (Month)				April-March (Cumulative)			
	2015-16 (Apr-Mar)	2015-16		2014-15	% over last year	2015-16		2014-15	% over last year
		Target	Actual	Actual		Target	Actual	Actual	
IOCL	54999.99	5336.71	5500.97	4714.55	116.68	54999.99	57197.58	53585.73	106.74
BPCL	23197.00	1977.00	2097.65	2090.41	100.35	23197.00	24082.81	23176.63	103.91
HPCL	16199.88	1438.04	1615.53	1551.79	104.11	16199.88	17233.65	16178.78	106.52
CPCL	10800.10	948.46	958.91	933.06	102.77	10800.10	9643.70	10782.01	89.44
NRL	2700.00	240.00	236.14	183.81	128.47	2700.00	2520.27	2776.68	90.77
MRPL	15250.00	1450.00	1534.83	1485.93	103.29	15250.00	15531.99	14632.23	106.15
ONGC	60.88	5.34	7.71	4.34	177.70	60.88	67.37	50.67	132.96
BORL	5200.00	500.00	638.34	521.44	122.42	5200.00	6402.21	6208.57	103.12
HMEL	9000.00	762.30	936.56	917.75	102.05	9000.00	10713.31	7317.81	146.40
RIL	68041.55	5139.59	6084.87	5139.59	118.39	68041.55	69561.02	68041.55	102.23
EOL	18792.76	1690.90	1771.56	1753.77	101.01	18792.76	19100.99	20491.11	93.22
TOTAL	224242.16	19488.34	21383.07	19296.44	110.81	224242.16	232054.89	223241.78	103.95

Figure 3.1: Monthly Refinery Production (TMT)



3.2 PSU Refineries' production during March, 2016 was 11951.734 TMT which is 4.88% higher than the target for the month and 9.01% higher than the production achieved in the corresponding month of last year. Cumulative production of PSUs during April, 2015-March, 2016 was 126277.37 TMT which is 2.49% higher than the cumulative target and 4.20% higher than the production during the corresponding period of last year. IOCL, Guwahati: Delayed stabilization of units after planned shutdown.

3.3 Production in JV refineries during March, 2016 was 1574.90 TMT which is 24.76% higher than the target for the month and 9.43% higher than the production achieved in the corresponding month of last year. Cumulative production in JV refineries during April, 2015-March, 2016 was 17115.51 TMT which is 20.53% higher than the cumulative target and 26.53% higher than the production during the corresponding period of last year.

3.4 Production in private refineries during March, 2016 was 7856.44 TMT which is 15.02% higher than the target for the month and 13.97% higher than the production achieved in the corresponding month of last year. Cumulative production in private refineries during April, 2015-March, 2016 was 88662.01 TMT which is 2.10% higher than the cumulative target and 0.15% higher than the production during the corresponding period of last year.

3.5 Refinery-wise details of the capacity utilization and Production of petroleum products during the month of March, 2016 and cumulatively for the period April, 2015-March, 2016 vis-à-vis April, 2014-March, 2015 are given at Annexures-IV and V respectively.

Annexure-I

MINISTRY OF PETROLEUM & NATURAL GAS

(Para 1.1)

Review of Crude Oil Production during the month of March, 2016 and cumulatively for the period April, 2015-March, 2016 vis-à-vis April, 2014-March, 2015

(Qty: '000' Tonnes)

Name of Undertaking/Unit/State	Planned production during the month	Production during the			Cumulative Production			% variation over last year		% variation during the month under review over planned production
		Month under review *	Corresponding month of last year	Preceding month of current year	(April - March)			During the month under review	Upto the end of the period	
					Planned production during current year	Actual production during current year	Actual production during corresponding period of last year			
(1)	(2)	(3)	(4)	(5)	(6)	(7)	(8)	(9)	(10)	(11)
1. ONGC	1990.282	1870.058	1948.740	1780.730	22732.000	22367.941	22263.686	-4.04	0.47	-6.04
Onshore	539.203	506.037	506.017	469.891	6120.000	5824.993	6068.878	0.00	-4.02	-6.15
Andhra Pradesh	23.341	23.120	25.025	22.405	280.200	294.791	254.304	-7.61	15.92	-0.95
Assam ^	93.777	82.771	80.750	75.926	1016.400	964.944	1060.802	2.50	-9.04	-11.74
Gujarat	398.814	378.906	375.040	350.750	4554.400	4311.152	4513.710	1.03	-4.49	-4.99
Tamil Nadu	23.271	21.240	25.202	20.810	269.000	254.106	240.063	-15.72	5.85	-8.73
Offshore	1451.079	1364.021	1442.723	1310.839	16612.000	16542.948	16194.807	-5.46	2.15	-6.00
Eastern Offshore	0.924	2.094	2.037	2.597	12.000	27.114	18.191	2.80	49.05	126.62
Western Offshore	1328.663	1275.158	1329.380	1196.733	15200.000	15236.801	14739.518	-4.08	3.37	-4.03
Condensates	121.492	86.769	111.306	111.509	1400.000	1279.033	1437.098	-22.04	-11.00	-28.58
2. OIL (Onshore)	316.276	268.851	289.230	246.212	3595.000	3226.036	3412.100	-7.05	-5.45	-14.99
Assam	315.564	268.187	288.741	245.582	3587.996	3220.193	3405.049	-7.12	-5.43	-15.01
Arunachal Pradesh	0.712	0.664	0.489	0.630	7.004	5.843	7.051	35.79	-17.13	-6.74
3. DGH (Private / JVC)	909.762	923.446	988.665	869.727	10718.741	11356.008	11785.214	-6.60	-3.64	1.50
Onshore	700.595	724.077	746.190	682.315	8270.870	8809.795	9055.758	-2.96	-2.72	3.35
Arunachal Pradesh	5.929	5.055	4.464	4.190	70.000	51.512	68.877	13.24	-25.21	-14.74
Gujarat	16.459	12.931	12.450	11.283	193.652	149.778	139.350	3.86	7.48	-21.44
Rajasthan	678.207	704.841	729.276	665.641	8007.218	8601.593	8847.531	-3.35	-2.78	3.93
Tamil Nadu	0.000	1.250	0.000	1.201	0.000	6.912	0.000	-	-	-
Offshore	209.167	199.369	242.475	187.412	2447.871	2546.213	2729.456	-17.78	-6.71	-4.68
Eastern Offshore	106.144	85.717	142.919	77.533	1224.590	1232.372	1374.679	-40.02	-10.35	-19.24
Gujarat Offshore	29.270	34.106	31.457	32.224	345.570	410.911	396.180	8.42	3.72	16.52
Western Offshore	73.753	79.546	68.099	77.655	877.711	902.930	958.597	16.81	-5.81	7.85
GRAND TOTAL (1+2+3)	3216.320	3062.355	3226.635	2896.669	37045.741	36949.985	37461.000	-5.09	-1.36	-4.79
Onshore	1556.074	1498.965	1541.437	1398.418	17985.870	17860.824	18536.736	-2.76	-3.65	-3.67
Offshore	1660.246	1563.390	1685.198	1498.251	19059.871	19089.161	18924.263	-7.23	0.87	-5.83

Note: Totals may not tally due to rounding off figures.

^: Includes crude oil production of Tripura

*: Provisional. **: Revised

Reasons for shortfall are indicated in the note.

MINISTRY OF PETROLEUM & NATURAL GAS

Review of Natural Gas Production during the month of March, 2016 and cumulatively for the period April, 2015-March, 2016 vis-à-vis April, 2014-March, 2015

(Qty: Million Cubic Meters)

Name of Undertaking/Unit/State	Planned production during the month	Production during the			Cumulative Production (April - March)			% variation over last year		% variation during the month under review over planned production
		Month under review *	Corresponding month of last year	Preceding month of current year	Planned production during current year	Actual production during current year	Actual production during corresponding period of last year	During the month under review	Upto the end of the period	
(1)	(2)	(3)	(4)	(5)	(6)	(7)	(8)	(9)	(10)	(11)
1. ONGC	2091.157	1642.761	1869.656	1730.869	23908.000	21176.637	22022.116	-12.14	-3.84	-21.44
Onshore	470.335	435.952	425.232	388.313	5363.000	4770.309	4750.357	2.52	0.42	-7.31
Andhra Pradesh	76.107	62.377	54.505	57.046	807.000	619.355	540.587	14.44	14.57	-18.04
Assam	42.850	36.397	35.045	32.609	473.000	404.508	448.597	3.86	-9.83	-15.06
Gujarat	103.287	126.705	117.125	113.364	1223.000	1399.281	1423.485	8.18	-1.70	22.67
Rajasthan	1.270	0.189	0.758	0.182	15.000	4.960	6.084	-75.07	-18.48	-85.12
Tamil Nadu	111.885	88.243	100.010	74.555	1269.000	1010.245	1191.564	-11.77	-15.22	-21.13
Tripura	134.936	122.041	117.789	110.557	1576.000	1331.960	1140.040	3.61	16.83	-9.56
Offshore	1620.822	1206.809	1444.424	1342.556	18545.000	16406.328	17271.758	-16.45	-5.01	-25.54
Eastern Offshore	75.006	7.551	21.639	22.047	800.000	212.243	118.809	-65.10	78.64	-89.93
Western Offshore	1545.816	1199.258	1422.785	1320.509	17745.000	16194.085	17152.950	-15.71	-5.59	-22.42
2. OIL	255.617	253.682	232.069	218.477	3009.973	2837.937	2722.208	9.31	4.25	-0.76
Assam	232.229	231.816	209.770	201.129	2756.153	2620.271	2509.650	10.51	4.41	-0.18
Arunachal Pradesh	1.168	1.041	1.084	0.932	13.820	11.477	11.905	-3.97	-3.59	-10.87
Rajasthan	22.220	20.825	21.215	16.416	240.000	206.189	200.653	-1.84	2.76	-6.28
3. DGH (Private / JVC)	699.551	643.211	735.354	615.660	8361.908	8234.634	8911.944	-12.53	-7.60	-8.05
Onshore	84.635	100.016	104.760	95.406	999.240	1236.351	1094.825	-4.53	12.93	18.17
Arunachal Pradesh	0.939	1.239	1.797	1.341	11.090	18.083	21.628	-31.05	-16.39	31.90
Gujarat	6.263	7.339	8.028	6.888	73.941	90.778	102.165	-8.58	-11.15	17.18
Rajasthan	77.433	91.318	94.935	87.067	914.209	1126.869	971.032	-3.81	16.05	17.93
Tamil Nadu	0.000	0.120	0.000	0.110	0.000	0.621	0.000	-	-	-
CBM	52.345	36.219	23.840	32.821	618.006	392.879	228.240	51.93	72.13	-30.81
Jharkhand (CBM)	0.297	0.243	0.176	0.201	3.506	1.710	2.479	38.07	-31.02	-18.17
Madhya Pradesh (CBM)	3.690	0.150	0.103	0.274	43.560	1.738	2.080	45.63	-16.44	-95.93
West Bengal (CBM)	48.358	35.826	23.561	32.346	570.940	389.431	223.681	52.06	74.10	-25.92
Offshore	562.571	506.976	606.754	487.433	6744.663	6605.404	7588.879	-16.44	-12.96	-9.88
Eastern Offshore	410.909	315.010	397.994	306.429	4844.004	4356.122	4927.826	-20.85	-11.60	-23.34
Gujarat Offshore	3.540	6.649	3.967	5.680	41.800	68.436	109.823	67.61	-37.69	87.80
Western Offshore	148.122	185.317	204.793	175.324	1858.859	2180.846	2551.230	-9.51	-14.52	25.11
TOTAL (1+2+3)	3046.325	2539.654	2837.079	2565.006	35279.881	32249.208	33656.268	-10.48	-4.18	-16.63
CBM	52.345	36.219	23.840	32.821	618.006	392.879	228.240	51.93	72.13	-30.81
Onshore	810.587	789.650	762.061	702.196	9372.213	8844.597	8567.390	3.62	3.24	-2.58
Offshore	2183.393	1713.785	2051.178	1829.989	25289.663	23011.732	24860.637	-16.45	-7.44	-21.51

Note: Totals may not tally due to rounding off figures.

*: Provisional.

**: Revised

CBM: Coal Bed Methane production.

Reasons for shortfall are indicated in the note.

MINISTRY OF PETROLEUM & NATURAL GAS

Review of Refinery Crude Throughput (in terms of crude oil processed) during the month of March, 2016 and cumulatively for the period April, 2015-March, 2016 vis-à-vis April, 2014-March, 2015

(Qty: '000' Tonnes)

Name of Undertaking/Unit	Planned production during the month	Production during the			Cumulative Production			% variation over last year		% variation during the month under review over planned production
		Month under review *	Corresponding month of last year	Preceding month of current year	(April - March)			During the month under review	Upto the end of the period	
					Planned production during current year	Actual production during current year **	Actual production during corresponding period of last year			
(1)	(2)	(3)	(4)	(5)	(6)	(7)	(8)	(9)	(10)	(11)
A. Public Sector	11395.559	11951.734	10963.891	11066.459	123207.852	126277.371	121182.732	9.01	4.20	4.88
1. IOC, Guwahati	90.000	84.643	94.807	37.799	1000.000	903.523	1005.794	-10.72	-10.17	-5.95
2. IOC, Barauni	533.580	566.759	535.474	506.437	6300.000	6544.753	5943.831	5.84	10.11	6.22
3. IOC, Gujarat	1220.142	1268.547	1001.030	1177.495	13299.994	13819.915	13285.299	26.72	4.02	3.97
4. IOC, Haldia	700.000	656.282	662.121	640.624	7800.000	7776.472	7650.241	-0.88	1.65	-6.25
5. IOC, Mathura	700.000	814.207	837.498	739.980	8400.000	8860.281	8515.432	-2.78	4.05	16.32
6. IOC, Digboi	51.000	59.003	24.195	44.029	650.000	561.833	591.288	143.86	-4.98	15.69
7. IOC, Panipat	1337.088	1346.018	1333.499	1296.625	15200.000	15282.368	14190.896	0.94	7.69	0.67
8. IOC, Bongaigaon	204.905	201.905	225.923	191.727	2350.000	2441.664	2402.949	-10.63	1.61	-1.46
9. IOC, Paradip ^	500.000	503.603	-	503.170	-	1006.773	-	-	-	0.72
Total IOC	5336.715	5500.967	4714.547	5137.886	54999.994	57197.582	53585.730	16.68	6.74	3.08
9. BPCL, Mumbai	1077.000	1174.207	1178.619	1119.300	12897.000	13371.259	12820.893	-0.37	4.29	9.03
10. BPCL, Kochi	900.000	923.443	911.790	872.640	10300.000	10711.548	10355.735	1.28	3.44	2.60
Total BPCL	1977.000	2097.650	2090.409	1991.940	23197.000	24082.807	23176.628	0.35	3.91	6.10
11. HPCL, Mumbai	633.605	775.722	708.593	695.799	7100.001	8013.204	7408.473	9.47	8.16	22.43
12. HPCL, Visakh	804.437	839.806	843.200	782.712	9099.875	9220.444	8770.309	-0.40	5.13	4.40
Total HPCL	1438.042	1615.528	1551.793	1478.510	16199.876	17233.648	16178.781	4.11	6.52	12.34
13. CPCL, Manali	906.000	901.160	891.316	867.669	10300.100	9100.137	10250.756	1.10	-11.22	-0.53
14. CPCL, Narimanam(CBR)	42.460	57.749	41.744	54.618	500.000	543.564	531.258	38.34	2.32	36.01
Total CPCL	948.460	958.909	933.060	922.287	10800.100	9643.701	10782.014	2.77	-10.56	1.10
15. NRL, Numaligarh	240.000	236.144	183.813	203.014	2700.000	2520.267	2776.682	28.47	-9.23	-1.61
16. MRPL, Mangalore	1450.000	1534.831	1485.932	1325.628	15250.000	15531.993	14632.227	3.29	6.15	5.85
17. ONGC, Tatipaka	5.342	7.706	4.337	7.193	60.882	67.372	50.670	77.70	32.96	44.25
B. Joint Venture Sub Total	1262.295	1574.899	1439.196	1201.799	14200.000	17115.511	13526.387	9.43	26.53	24.76
18. BORL, Bina	500.000	638.338	521.441	502.203	5200.000	6402.206	6208.572	22.42	3.12	27.67
19. HMEL, GGSR, Bhatinda	762.295	936.560	917.755	699.596	9000.000	10713.305	7317.815	2.05	46.40	22.86
C. Private Sector	6830.487	7856.435	6893.352	7236.202	86834.306	88662.008	88532.659	13.97	0.15	15.02
20. RIL, Jamnagar	1984.735	2815.466	1984.735	2578.040	30867.395	32428.383	30867.394	41.86	5.06	41.86
21. RIL, SEZ	3154.852	3269.405	3154.852	2988.174	37174.152	37132.632	37174.152	3.63	-0.11	3.63
Total RIL	5139.587	6084.871	5139.587	5566.214	68041.547	69561.015	68041.546	18.39	2.23	18.39
22. Essar Oil Ltd.(EOL), Vadinar	1690.900	1771.564	1753.765	1669.988	18792.759	19100.993	20491.113	1.01	-6.78	4.77
TOTAL(A+B+C)	19488.341	21383.068	19296.439	19504.460	224242.157	232054.890	223241.778	10.81	3.95	9.72

Note: Totals may not tally due to rounding off figures.

*: Provisional.

**: Revised

^: Estimated target : Producton commenced in February, 2016

Reasons for shortfall are indicated in the note.

MINISTRY OF PETROLEUM & NATURAL GAS

(Para 3.5)

Refinery-wise Capacity Utilisation during the month of March, 2016 and cumulatively for the period April, 2015-March, 2016 vis-à-vis April, 2014-March, 2015

(Qty: '000' Tonnes)

Name of Undertaking/Unit	March, 2016			March, 2015			Cumulative (April - March)					
	Prorated Installed Capacity	Actual Crude T'put *	% Utilisation of I/C	Prorated Installed Capacity	Actual Crude T'put	% Utilisation of I/C	2015-16			2014-15		
							Prorated Installed Capacity	Actual Crude T'put *	% Utilisation of I/C	Prorated Installed Capacity	Actual Crude T'put	% Utilisation of I/C
(1)	(2)	(3)	(4)	(5)	(6)	(7)	(8)	(9)	(10)	(11)	(12)	(13)
A. Public Sector	10170.000	11951.734	117.52	10197.000	10963.891	107.52	120066.000	126277.371	105.17	120066.000	121182.732	100.93
1. IOC, Guwahati	85.000	84.643	99.58	85.000	94.807	111.54	1000.000	903.523	90.35	1000.000	1005.794	100.58
2. IOC, Barauni	508.000	566.759	111.57	510.000	535.474	104.99	6000.000	6544.753	109.08	6000.000	5943.831	99.06
3. IOC, Koyali	1160.000	1268.547	109.36	1164.000	1001.030	86.00	13700.000	13819.915	100.88	13700.000	13285.299	96.97
4. IOC, Haldia	635.000	656.282	103.35	637.000	662.121	103.94	7500.000	7776.472	103.69	7500.000	7650.241	102.00
5. IOC, Mathura	678.000	814.207	120.09	679.000	837.498	123.34	8000.000	8860.281	110.75	8000.000	8515.432	106.44
6. IOC, Digboi	55.000	59.003	107.28	55.000	24.195	43.99	650.000	561.833	86.44	650.000	591.288	90.97
7. IOC, Panipat	1270.000	1346.018	105.99	1274.000	1333.499	104.67	15000.000	15282.368	101.88	15000.000	14190.896	94.61
8. IOC, Bongaigaon	199.000	201.905	101.46	200.000	225.923	112.96	2350.000	2441.664	103.90	2350.000	2402.949	102.25
Total IOC	4591.000	5500.967	119.82	4603.000	4714.547	102.42	54200.000	57197.582	105.53	54200.000	53585.730	98.87
9. BPCL, Mumbai	1016.000	1174.207	115.57	1019.000	1178.619	115.66	12000.000	13371.259	111.43	12000.000	12820.893	106.84
10. BPCL, Kochi	805.000	923.443	114.71	807.000	911.790	112.99	9500.000	10711.548	112.75	9500.000	10355.735	109.01
Total BPCL	1821.000	2097.650	115.19	1826.000	2090.409	114.48	21500.000	24082.807	112.01	21500.000	23176.628	107.80
12. HPCL, Mumbai	551.000	775.722	140.78	552.000	708.593	128.37	6500.000	8013.204	123.28	6500.000	7408.473	113.98
13. HPCL, Visakh	703.000	839.806	119.46	705.000	843.200	119.60	8300.000	9220.444	111.09	8300.000	8770.309	105.67
Total HPCL	1254.000	1615.528	128.83	1257.000	1551.793	123.45	14800.000	17233.648	116.44	14800.000	16178.781	109.32
14. CPCL, Manali	889.000	901.160	101.37	892.000	891.316	99.92	10500.000	9100.137	86.67	10500.000	10250.756	97.63
15. CPCL, Narimanam	85.000	57.749	67.94	85.000	41.744	49.11	1000.000	543.564	54.36	1000.000	531.258	53.13
Total CPCL	974.000	958.909	98.45	977.000	933.060	95.50	11500.000	9643.701	83.86	11500.000	10782.014	93.76
16. NRL, Numaligarh	254.000	236.144	92.97	255.000	183.813	72.08	3000.000	2520.267	84.01	3000.000	2776.682	92.56
17. MRPL, Mangalore	1270.000	1534.831	120.85	1274.000	1485.932	116.64	15000.000	15531.993	103.55	15000.000	14632.227	97.55
18. ONGC, Tatipaka	6.000	7.706	128.44	6.000	4.337	72.28	66.000	67.372	102.08	66.000	50.670	76.77
B. Joint Venture Sub Total	1270.000	1574.899	124.01	1274.000	1439.196	112.97	15000.000	17115.511	114.10	15000.000	13526.387	90.18
18. BORL, Bina	508.000	638.338	125.66	510.000	521.441	102.24	6000.000	6402.206	106.70	6000.000	6208.572	103.48
19. HMEL, GGSR, Bhatinda	762.000	936.560	122.91	764.000	917.755	120.12	9000.000	10713.305	119.04	9000.000	7317.815	81.31
C. Private Sector	6776.000	7856.435	115.95	6795.000	6893.352	101.45	80000.000	88662.008	110.83	80000.000	88532.659	110.67
20. RIL, Jamnagar	2795.000	2815.466	100.73	2803.000	1984.735	70.81	33000.000	32428.383	98.27	33000.000	30867.394	93.54
21. RIL, SEZ	2287.000	3269.405	142.96	2293.000	3154.852	137.59	27000.000	37132.632	137.53	27000.000	37174.152	137.68
Total RIL	5082.000	6084.871	119.73	5096.000	5139.587	100.86	60000.000	69561.015	115.94	60000.000	68041.546	113.40
22. EOL, Vadinar	1694.000	1771.564	104.58	1699.000	1753.765	103.22	20000.000	19100.993	95.50	20000.000	20491.113	102.46
TOTAL	18216.000	21383.068	117.39	18266.000	19296.439	105.64	215066.000	232054.890	107.90	215066.000	223241.778	103.80

*: Provisional.

I/C: Installed Capacity.

MINISTRY OF PETROLEUM & NATURAL GAS

Review of Production of Petroleum Products during the month of March, 2016 and cumulatively for the period April, 2015-March, 2016 vis-à-vis April, 2014-March, 2015

(Qty: '000' Tonnes)

Name of Undertaking/Unit	Planned production during the month	Production during the			Cumulative Production			% variation over last year		% variation during the month under review over planned production
		Month under review *	Corresponding month of last year	Preceding month of current year **	(April - March)			During the month under review	Upto the end of the period	
					Planned production during current year	Actual production during current year	Actual production during corresponding period of last year			
(1)	(2)	(3)	(4)	(5)	(6)	(7)	(8)	(9)	(10)	(11)
I. Refinery										
A. Public Sector	10730.484	11658.696	10374.217	10568.470	114814.555	119991.821	114462.277	12.38	4.83	8.65
1. IOC, Guwahati	81.046	105.445	106.473	37.569	881.100	1103.385	1066.772	-0.97	3.43	30.11
2. IOC, Barauni	482.139	535.785	501.725	470.416	5746.918	6079.438	5412.275	6.79	12.33	11.13
3. IOC, Koyali, Gujarat	1151.193	1215.463	913.361	1137.555	12520.347	13246.412	12492.264	33.08	6.04	5.58
4. IOC, Haldia	635.816	625.922	598.010	598.972	7082.360	7132.656	7008.295	4.67	1.77	-1.56
5. IOC, Mathura	682.064	781.633	763.207	751.047	8175.963	8639.782	8243.329	2.41	4.81	14.60
6. IOC, Digboi	42.812	56.592	24.970	44.374	632.205	540.562	590.628	126.64	-8.48	32.19
7. IOC, Panipat	1284.266	1450.626	1321.240	1360.878	14438.112	15501.280	14109.795	9.79	9.86	12.95
8. IOC, Bongaigaon	184.886	211.819	211.897	181.782	2119.700	2252.916	2186.353	-0.04	3.04	14.57
9. IOC, Paradip ^	555.239	555.239	-	317.951	-	873.190	-	-	-	0.00
Total IOC	5099.461	5538.524	4440.883	4900.544	51596.706	55369.621	51109.711	24.72	8.33	8.61
9. BPCL, Mumbai	1027.460	1140.353	1126.556	1082.597	12330.290	12801.609	12345.514	1.22	3.69	10.99
10. BPCL, Kochi	854.500	889.900	907.662	829.165	9589.100	10163.515	9803.338	-1.96	3.67	4.14
Total BPCL	1881.960	2030.253	2034.218	1911.762	21919.390	22965.125	22148.852	-0.19	3.69	7.88
11. HPCL, Mumbai	593.345	726.528	651.147	653.151	6655.486	7468.423	7030.318	11.58	6.23	22.45
12. HPCL, Visakh	741.701	823.681	780.649	754.850	8385.924	8558.045	8240.660	5.51	3.85	11.05
Total HPCL	1335.047	1550.209	1431.797	1408.001	15041.410	16026.468	15270.978	8.27	4.95	16.12
13. CPCL, Manali	828.300	839.708	833.416	821.767	9371.498	8330.449	9420.544	0.75	-11.57	1.38
14. CPCL, Narimanam(CBR)	43.181	57.784	42.524	54.562	508.486	550.183	538.674	35.89	2.14	33.82
Total CPCL	871.481	897.492	875.940	876.329	9879.984	8880.632	9959.218	2.46	-10.83	2.98
15. NRL, Numaligarh	233.651	248.129	196.281	201.476	2607.316	2517.959	2754.406	26.42	-8.58	6.20
16. MRPL, Mangalore	1303.620	1386.538	1390.822	1263.293	13709.750	14165.815	13169.173	-0.31	7.57	6.36
17. ONGC, Tatipaka	5.265	7.551	4.276	7.065	60.000	66.202	49.939	76.59	32.57	43.42
B. JVs Sub Total	1175.814	1564.506	1386.145	1091.976	13248.954	15945.345	12682.035	12.87	25.73	33.06
18. BORL Bina	457.500	636.148	539.543	480.325	4758.000	5916.096	5781.961	17.90	2.32	39.05
19. HMEL, GGSR, Bhatinda	718.314	928.359	846.602	611.652	8490.954	10029.249	6900.074	9.66	45.35	29.24
C. Private Sector	6907.692	7846.003	6991.806	7493.025	88397.393	91734.190	89996.903	12.22	1.93	13.58
1. RIL, Jamnagar	2129.063	2637.898	2129.063	2533.743	30863.267	32330.570	30863.591	23.90	4.75	23.90
2. RIL (SEZ)	3139.525	3464.866	3139.525	3423.621	39328.850	41088.715	39328.850	10.36	4.47	10.36
Total RIL	5268.587	6102.764	5268.587	5957.364	70192.117	73419.287	70192.441	15.83	4.60	15.83
3. EOL, Vadinar	1639.105	1743.239	1723.219	1535.661	18205.276	18314.903	19804.462	1.16	-7.52	6.35
Total Refinery (A+B+C)	18813.990	21069.206	18752.168	19153.471	216460.902	227671.356	217141.215	12.36	4.85	11.99
II. Fractionators										
ONGC	294.142	232.771	228.597	268.757	3285.000	2886.467	2673.826	1.83	7.95	-20.86
OIL	4.000	3.601	4.049	3.501	44.000	41.030	43.686	-11.06	-6.08	-9.97
GAIL	99.437	89.938	94.063	97.618	1174.000	1088.778	1276.805	-4.39	-14.73	-9.55
D. Total Fractionators	397.579	326.310	326.709	369.876	4503.000	4016.275	3994.317	-0.12	0.55	-17.93
Grand Total (A+B+C+D)	19211.569	21395.516	19078.877	19523.348	220963.902	231687.631	221135.532	12.14	4.77	11.37

Note: Totals may not tally due to rounding off figures.

*: Provisional. **: Revised

^: Estimated target : Production commenced in February, 2016