

Government of India
Ministry of Petroleum and Natural Gas
Economics & Statistics Division

New Delhi
Dated the 20th June, 2016

Monthly Production Report
May 2016

Crude Oil

- Crude oil production¹ during May 2016 was 3078.31 TMT which is 0.96% higher than target but 3.34 % lower than the production achieved in May 2015. Cumulative crude oil production during April-May, 2016 was 6035.38 TMT which is 0.42% higher than target for the period and 2.81% lower than the production during corresponding period of last year. Unit-wise and state-wise crude oil production is given at Annexure-I. Unit-wise crude oil production for the month of May, 2016 and cumulatively for the period April-May, 2016 vis-à-vis same period of last year has been shown in Table-1 and month-wise in Figure-1.

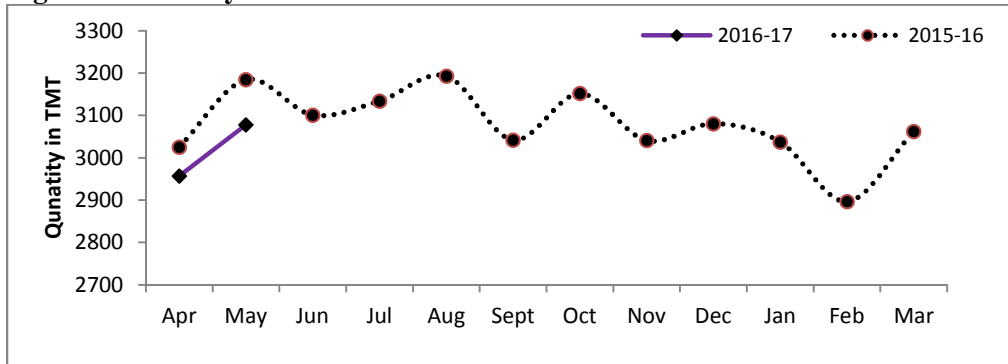
Table-1: Crude Oil Production (in TMT)

Oil Company	Target	May (Month)				April-May (Cumulative)			
	2016-17 (Apr-Mar) *	2016-17*		2015-16	% over last year	2016-17		2015-16	% over last year
		Target	Prod.	Prod.		Target	Prod.	Prod.	
ONGC	22393.40	1857.45	1888.30	1905.15	99.12	3654.51	3690.06	3720.49	99.18
OIL	3280.10	267.50	271.40	284.99	95.23	527.80	532.81	565.70	94.19
PSC Fields	10839.32	924.19	918.61	994.38	92.38	1827.78	1812.51	1923.72	94.22
Total	36512.83	3049.14	3078.31	3184.52	96.66	6010.08	6035.38	6209.91	97.19

*:Provisional

¹ Including condensate

Figure-1: Monthly Crude Oil Production



Unit-wise production details with reasons for shortfall have been given in following sub-sections:

1.1 Crude oil production by ONGC during May, 2016 was 1888.30 TMT which is 1.66% higher than the monthly target but 0.88% less when compared with May 2015. Cumulative crude oil production during April-May, 2016 was 3690.06 TMT which is 0.97% higher than target for the period and 0.82% lower than the production during corresponding period of last year. Reasons for shortfall in production are as under:

- Offshore: Decline in production from Cluster 7 wells. Separator cleaning job in Heera field. Natural decline from Matured Fields
- Gujarat, Ahmedabad: Less production from Jhalora, South Kadi & Limbodara fields because of reservoir issues. Transfer of 4 marginal fields (*Sadra, Mahilaj, Vatrak & Asmali*) to Cambay.
- Assam: Low gas lift pressure in Geleki field due to ASEB shut downs & tripping of Gas Lift Compressor
- Rajahmundry: Production decline in Kesanapalli-West Gopavaram & Lingala/Kaikular fields on account of reservoir issues.
- Karaikal: Less than envisaged production from Kamlapuram, Vijaypuram & Narimanam fields.

1.2 Crude oil production by OIL during May, 2016 was 271.40 TMT which is 1.46% higher than monthly target but 4.77% less than May 2015. Cumulative crude oil production during April-May, 2016 was 532.81 TMT which is 0.95% higher than target for the period but 5.81% lower than the production during corresponding period of last year. Reasons for shortfall in production are as under:

- Well head potential of OIL's producing wells in North East declined at a rate of 20.4% in 2015-16 as against anticipated decline of about 14%. The potential build up from the development well completed during 2015-16 was also lower than expected.

1.3 Crude oil production by Pvt. /JVs during May 2016 was 918.61 TMT which is 0.6% lower than the monthly target and 7.62% less then compared with May, 2015. Cumulative crude oil production during April-May, 2016 was 1812.51 TMT which is 0.84% lower than target for the period and 5.78% lower than the production during corresponding period of last year. Reasons for shortfall in production are as under:

- Cairn: Less production from RJ-ON-90/1 due to shutdown at Bhagyam on 16.05.2015 and Aishwarya field on 11.05.2016 and natural decline in Ravva.
- GSPC: Underperformance of wells in KG-OSN-2001/3.
- Natural Decline in Ravva and underperformance in Mangala & Bhagyam wells in RJ-ON-90/1
- Closure of 1 well in KG D6
- Production from M&S TAPTI stopped in March, 2016

Natural Gas

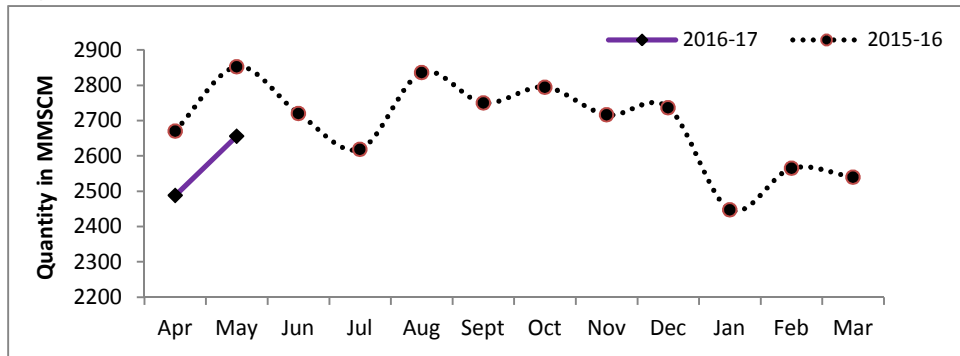
2. Natural gas production during May 2016 was 2656.09 MMSCM which is 2.56% lower than the target for the month and 6.88% lower than the production during corresponding period of last year. Cumulative natural gas production during April-May, 2016 was 5144.13 MMSCM which is 2.04% lower than target for the period and 6.86% lower than the production during corresponding period of last year. Unit-wise and state-wise natural gas production is given at Annexure-II. Unit-wise natural gas production for the month of May, 2016 and cumulatively for the period April-May, 2016 vis-à-vis same period of last year has been shown in Table-2 and month-wise in Figure-2.

Table-2: Natural Gas Production (MMSCM)

Oil Company	Target	May (Month)				April-May (Cumulative)			
	2016-17 (Apr-Mar)*	2016-17*		2015-16	% over last year	2016-17		2015-16	% over last year
		Target	Prod.	Prod.		Target	Prod.	Prod.	
ONGC	22743.43	1812.35	1790.77	1898.68	94.32	3437.29	3421.68	3680.88	92.96
OIL	2905.55	247.10	239.11	221.79	107.81	484.04	489.47	416.60	117.49
PSC Fields	8425.44	666.44	626.21	731.94	85.55	1329.79	1232.98	1425.46	86.50
Total	34074.42	2725.89	2656.09	2852.41	93.12	5251.11	5144.13	5522.94	93.14

*:Provisional

Figure-2: Monthly Natural Gas Production



2.1 Natural gas production by ONGC during May, 2016 was 1790.77 MMSCM which is 1.19% lower than the monthly target and 5.68% less when compared with May 2015. Cumulative natural gas production during April-May, 2016 was 3421.68 MMSCM which is 0.45% lower than the cumulative target and 7.04% lower than the production during the corresponding period of last year. Reasons for shortfall in production are as under:

- ❖ Offshore: Closure of both the deep water wells of G1 field for carrying out tie-in works of S2AB well. Decline/less production from Bassein field post BPA and BPB shutdown taken in Jan'16 and March'16 respectively under "Reconstruction of BPA & BPB Platforms" Project
- ❖ Ankleshwar: Closure of 24 wells in Gandhar field on account of GAIL pipeline shutdown from May 8, 2016.
- ❖ Karaikal: Closure of wells on account of less off-take by consumers GAIL / TNEB. Shutdown taken for hook-up of GDUs in Kuthalam & Ramnad GCS.

2.2 Natural gas production by OIL during May, 2016 was 239.11 MMSCM which is 3.23% lower than the monthly target but 7.81% higher than May 2015. Cumulative natural gas production during April-May, 2016 was 489.47 MMSCM which is 1.12% higher than the cumulative target and 17.49% higher than the production during the corresponding period of last year. Reasons for shortfall in production are as under:

- ❖ BVFCL: Namrup Unit – III shut down for 11 days due to maintenance related issues of the Process Air Compressor.
- ❖ NTPS: Maintenance related issues of the Gas Turbines and also for load evacuation problem due to damage of the Auto Transformer for fire.
- ❖ BCPL: Due to maintenance problem of the LPDE unit at Lepakata.

2.3 Natural gas production by Pvt. /JVs during May 2016 was 626.21 MMSCM which is 6.04% lower than the monthly target and 14.45% less when compared with May, 2015. Cumulative natural gas production during April-May, 2016 was 1232.98 MMSCM which

is 7.28% lower than the cumulative target and 13.50% lower than the production during the corresponding period of last year. Reasons for shortfall in production are as under:

- ❖ Underperformance of wells of KG-OSN-2001/3.
- ❖ Dewatering issues in CBM blocks.
- ❖ Gas off-take issues in RJ-ON/6.
- ❖ M&S Tapti: Production stopped in March 2016.
- ❖ Closure of one well in KG D6.
- ❖ Natural Decline in Ravva, PY-1 and Hazira.

Refinery Production (in terms of Crude oil processed)

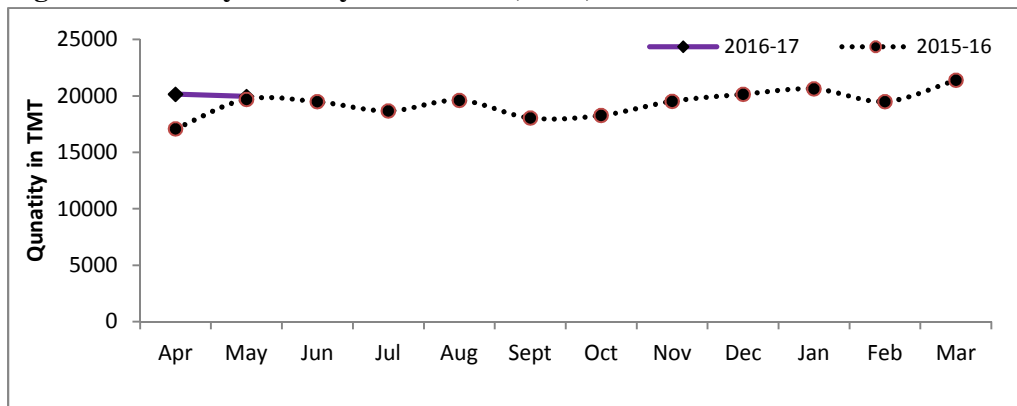
- 3 Refinery production during May, 2016 was 19950.07 TMT which is 3.32% lower than the target for the month and 1.24% higher than the production during corresponding period of last year. Cumulative production during April-May, 2016 was 40105.74 TMT which is 0.77% higher than the target for the period and 9% higher than the production during corresponding period of last year. Unit-wise production is given at Annexure-III. Unit-wise production for the month of May, 2016 and cumulatively for the period April-May, 2016 vis-à-vis same period of last year has been shown in Table-3 and month-wise in Figure-3.

Table 3: Refinery Production (TMT)

Oil Company	Target	May (Month)				April-May (Cumulative)			
	2016-17 (Apr-Mar)*	2016-17*		2015-16	% over last year	2016-17		2015-16	% over last year
		Target	Actual	Actual		Target	Actual	Actual	
IOCL	64299.99	5598.87	5601.54	4840.97	115.71	10948.64	10914.61	8893.34	122.73
BPCL	24999.95	2069.11	2101.85	2091.84	100.48	4134.40	4142.69	4122.23	100.50
HPCL	16500.42	1462.62	1538.59	1226.60	125.44	2878.15	3056.28	2516.58	121.45
CPCL	10250.20	937.00	851.82	950.55	89.61	1844.30	1727.56	1889.66	91.42
NRL	2669.99	231.37	238.34	150.79	158.06	455.53	454.87	152.25	298.76
MRPL	15300.00	1475.00	1232.45	1336.10	92.24	2645.00	2398.36	2447.51	97.99
ONGC	44.59	3.95	6.40	4.21	152.06	7.82	13.21	8.21	160.88
BORL	6000.00	525.00	616.51	571.14	107.95	1050.00	1150.09	572.65	200.84
HMEL	9000.00	796.02	945.17	925.13	102.17	1566.36	1865.36	1821.02	102.43
RIL	69561.01	5844.23	5038.83	5844.23	86.22	10888.24	10885.31	10888.24	99.97
EOL	20291.64	1690.99	1778.56	1763.61	100.85	3381.98	3497.41	3482.04	100.44
TOTAL	238917.79	20634.15	19950.07	19705.15	101.24	39800.43	40105.74	36793.73	109.00

*:Provisional

Figure 3: Monthly Refinery Production (TMT)



- 3.1 PSU Refineries’ production during May, 2016 was 11570.98 TMT which is 1.76% lower than the target for the month and 9.15% higher than the production achieved in the corresponding month of last year. Cumulative production during April-May, 2016 was 22707.57 TMT which is 0.9% lower than the target for the period and 13.37% higher than the production during corresponding period of last year. Reasons for shortfall of refinery production of PSU refineries are as under:
- IOCL, Paradip: Throughput is lower as secondary units are still under commissioning and stabilization.
 - IOCL, Guwahati & Digboi: Lower crude availability.
 - CPCL, Manali: Throughput in Manali refinery was lower than target to contain VGO. Hydro-cracker Unit was under shut down for 7 days for Reactor catalyst scooping.
 - MRPL, Mangalore: Throughput restricted due to water crisis.
- 3.2 Production in JV refineries during May, 2016 was 1561.69 TMT which is 18.22% higher than the target for the month and 4.37% higher than the production achieved in the corresponding month of last year. Cumulative production during April-May, 2016 was 3015.45 TMT which is 15.25% higher than the target for the period and 25.98% higher than the production during corresponding period of last year.
- 3.3 Production in private refineries during May, 2016 was 6817.40 TMT which is 9.53% lower than the target for the month and 10.39% lower than the production achieved in the corresponding month of last year. Cumulative production during April-May, 2016 was 14382.72 TMT which is 0.79% higher than the target for the period and 0.09% higher than the production during corresponding period of last year.
- 3.4 Refinery-wise details of the capacity utilization and production of petroleum products during the month of May, 2016 and cumulatively for the period April-May, 2016 vis-à-vis April, -May, 2015 are given at Annexures-IV and V respectively.

Annexure-I

(Para 1)

MINISTRY OF PETROLEUM & NATURAL GAS

Crude Oil Production during the month of May, 2016 and cumulatively for the period April-May, 2016 vis-à-vis April-May, 2015

(Qty: '000' Tonnes)

Name of Undertaking/Unit/State	Planned production during the month	Production during the			Cumulative Production			% variation over last year		% variation during the month under review over planned production
		Month under review *	Corresponding month of last year **	Preceding month of current year **	(April-May)			During the month under review	Upto the end of the period	
					Planned production during current year	Actual production during current year *	Actual production during corresponding period of last year **			
(1)	(2)	(3)	(4)	(5)	(5)	(6)	(7)	(8)	(9)	(10)
1. ONGC	1857.451	1888.304	1905.145	1801.759	3654.507	3690.063	3720.490	-0.88	-0.82	1.66
Onshore	489.323	496.246	486.194	478.434	962.722	974.680	971.304	2.07	0.35	1.41
Andhra Pradesh	22.414	21.799	24.804	20.881	43.770	42.680	48.807	-12.11	-12.55	-2.74
Assam ^	79.469	79.219	82.782	77.273	156.145	156.492	162.436	-4.30	-3.66	-0.31
Gujarat	368.460	375.746	355.190	360.568	725.084	736.314	714.759	5.79	3.02	1.98
Tamil Nadu	18.980	19.482	23.418	19.712	37.723	39.194	45.302	-16.81	-13.48	2.64
Offshore	1368.128	1392.058	1418.951	1323.325	2691.785	2715.383	2749.186	-1.90	-1.23	1.75
Eastern Offshore	1.530	1.109	1.938	1.621	3.030	2.730	3.868	-42.78	-29.42	-27.52
Western Offshore	1252.078	1263.099	1299.140	1225.682	2467.655	2488.781	2511.256	-2.77	-0.89	0.88
Condensates	114.520	127.850	117.873	96.022	221.100	223.872	234.062	8.46	-4.35	11.64
2. OIL (Onshore)	267.500	271.404	284.991	261.407	527.800	532.811	565.701	-4.77	-5.81	1.46
Assam	266.900	270.740	284.566	260.763	526.600	531.503	564.863	-4.86	-5.91	1.44
Arunachal Pradesh	0.600	0.664	0.425	0.644	1.200	1.308	0.838	56.24	56.09	10.67
3. DGH (Private / JVC)	924.191	918.605	994.381	893.900	1827.777	1812.505	1923.721	-7.62	-5.78	-0.60
Onshore	736.897	726.934	766.889	709.558	1448.544	1436.492	1486.275	-5.21	-3.35	-1.35
Arunachal Pradesh	3.982	3.975	4.255	3.913	7.797	7.888	8.475	-6.58	-6.93	-0.18
Gujarat	13.283	11.484	13.101	11.651	26.233	23.135	23.728	-12.34	-2.50	-13.54
Rajasthan	716.706	710.215	749.533	692.801	1410.301	1403.016	1454.072	-5.25	-3.51	-0.91
Tamil Nadu	2.926	1.260	0.000	1.193	4.213	2.453	0.000	-	-	-
Offshore	187.294	191.671	227.492	184.342	379.233	376.013	437.446	-15.75	-14.04	2.34
Eastern Offshore	87.737	84.830	125.593	81.236	168.938	166.066	251.050	-32.46	-33.85	-3.31
Gujarat Offshore	34.257	34.425	29.070	33.629	68.585	68.054	58.944	18.42	15.46	0.49
Western Offshore	65.300	72.416	72.829	69.477	141.710	141.893	127.452	-0.57	11.33	10.90
GRAND TOTAL (1+2+3)	3049.142	3078.313	3184.517	2957.066	6010.084	6035.379	6209.912	-3.34	-2.81	0.96
Onshore	1493.720	1494.584	1538.074	1449.399	2939.066	2943.983	3023.280	-2.83	-2.62	0.06
Offshore	1555.422	1583.729	1646.443	1507.667	3071.018	3091.396	3186.632	-3.81	-2.99	1.82

Note: Totals may not tally due to rounding off figures.

^: Includes crude oil production of Tripura

*: Provisional. **: Revised

Reasons for shortfall are indicated in the note.

MINISTRY OF PETROLEUM & NATURAL GAS

Natural Gas Production during the month of May, 2016 and cumulatively for the period April-May, 2016 vis-à-vis April-May, 2015

(Qty: Million Cubic Meters)

Name of Undertaking/Unit/State	Planned production during the month	Production during the			Cumulative Production (April-May)			% variation over last year		% variation during the month under review over planned production
		Month under review *	Corresponding month of last year **	Preceding month of current year **	Planned production during current year	Actual production during current year *	Actual production during corresponding period of last year **	During the month under review	Upto the end of the period	
(1)	(2)	(3)	(4)	(5)	(5)	(6)	(7)	(8)	(9)	(10)
1. ONGC	1812.346	1790.765	1898.680	1630.916	3437.287	3421.682	3680.880	-5.68	-7.04	-1.19
Onshore	430.113	397.292	401.255	392.696	857.602	789.989	795.331	-0.99	-0.67	-7.63
Andhra Pradesh	55.910	57.670	52.691	55.029	111.064	112.699	105.618	9.45	6.70	3.15
Assam	35.083	35.706	34.956	35.490	68.801	71.196	68.267	2.15	4.29	1.78
Gujarat	125.595	104.713	119.375	117.913	248.415	222.627	238.367	-12.28	-6.60	-16.63
Rajasthan	0.425	0.223	0.719	0.262	0.836	0.485	1.399	-68.97	-65.32	-47.49
Tamil Nadu	94.372	77.905	97.149	84.211	189.698	162.116	185.661	-19.81	-12.68	-17.45
Tripura	118.729	121.075	96.365	99.791	238.788	220.866	196.019	25.64	12.68	1.98
Offshore	1382.233	1393.473	1497.426	1238.220	2579.685	2631.693	2885.550	-6.94	-8.80	0.81
Eastern Offshore	22.821	8.542	21.964	3.717	24.321	12.259	43.276	-61.11	-71.67	-62.57
Western Offshore	1359.412	1384.931	1475.462	1234.503	2555.364	2619.434	2842.274	-6.14	-7.84	1.88
2. OIL	247.102	239.114	221.789	250.351	484.041	489.465	416.598	7.81	17.49	-3.23
Assam	227.538	217.019	208.900	228.110	445.536	445.129	390.777	3.89	13.91	-4.62
Arunachal Pradesh	1.242	1.029	1.084	0.964	2.452	1.993	2.099	-5.08	-5.05	-17.15
Rajasthan	18.322	21.066	11.805	21.277	36.053	42.343	23.722	78.45	78.50	14.98
3. DGH (Private / JVC)	666.440	626.210	731.940	606.772	1329.786	1232.982	1425.464	-14.45	-13.50	-6.04
Onshore	101.104	108.663	97.084	106.353	199.693	215.016	187.218	11.93	14.85	7.48
Assam	0.000	0.000	0.000	0.000	0.000	0.000	0.000	0.00	0.00	0.00
Arunachal Pradesh	0.673	1.351	1.669	1.066	1.318	2.417	3.339	-19.05	-27.61	100.74
Gujarat	7.236	8.394	8.183	7.869	14.271	16.263	15.852	2.58	2.59	16.01
Rajasthan	92.870	98.798	87.232	97.300	183.644	196.098	168.027	13.26	16.71	6.38
Tamil Nadu	0.326	0.120	0.000	0.118	0.461	0.238	0.000	-	-	-
CBM	58.176	42.646	32.151	37.239	109.078	79.885	62.135	32.64	28.57	-26.70
Jharkhand (CBM)	0.275	0.212	0.175	0.195	0.542	0.407	0.329	21.14	23.71	-22.98
Madhya Pradesh (CBM)	6.560	0.513	0.097	0.216	10.210	0.729	0.187	428.87	289.84	-92.18
West Bengal (CBM)	51.341	41.921	31.879	36.828	98.326	78.749	61.619	31.50	27.80	-18.35
Offshore	507.160	474.901	602.705	463.180	1021.015	938.081	1176.111	-21.21	-20.24	-6.36
Eastern Offshore	372.235	301.777	403.165	293.168	738.562	594.945	791.798	-25.15	-24.86	-18.93
Gujarat Offshore	3.325	6.712	4.059	6.320	6.543	13.032	7.824	65.36	66.56	101.86
Western Offshore	131.600	166.412	195.481	163.692	275.910	330.104	376.489	-14.87	-12.32	26.45
TOTAL (1+2+3)	2725.888	2656.089	2852.410	2488.039	5251.114	5144.129	5522.943	-6.88	-6.86	-2.56
CBM	58.176	42.646	32.151	37.239	109.078	79.885	62.135	32.64	28.57	-26.70
Onshore	778.319	745.069	720.128	749.400	1541.336	1494.470	1399.147	3.46	6.81	-4.27
Offshore	1889.392	1868.374	2100.131	1701.400	3600.700	3569.774	4061.661	-11.04	-12.11	-1.11

Note: Totals may not tally due to rounding off figures.

*: Provisional. **: Revised

CBM: Coal Bed Methane production.

Reasons for shortfall are indicated in the note.

MINISTRY OF PETROLEUM & NATURAL GAS

Refinery Production (in terms of crude oil processed) during the month of May, 2016 and cumulatively for the period April-May, 2016 vis-à-vis April-May, 2015

(Qty: '000' Tonnes)

Name of Undertaking/Unit	Planned production during the month	Production during the			Cumulative Production			% variation over last year		% variation during the month under review over planned production
		Month under review *	Corresponding month of last year	Preceding month of current year **	(April-May)			During the month under review	Upto the end of the period	
					Planned production during current year	Actual production during current year *	Actual production during corresponding period of last year **			
(1)	(2)	(3)	(4)	(5)	(5)	(6)	(7)	(8)	(9)	(10)
A. Public Sector	11777.916	11570.984	10601.054	11136.582	22913.847	22707.567	20029.782	9.15	13.37	-1.76
1. IOC, Guwahati	81.000	72.838	95.257	75.424	159.000	148.262	188.779	-23.54	-21.46	-10.08
2. IOC, Barauni	550.920	576.665	527.142	559.264	1084.069	1135.929	1001.561	9.39	13.42	4.67
3. IOC, Gujarat	1224.500	1240.312	1204.387	1214.962	2399.500	2455.274	1808.172	2.98	35.79	1.29
4. IOC, Haldia	685.000	713.191	662.709	692.329	1360.000	1405.520	1309.820	7.62	7.31	4.12
5. IOC, Mathura	751.750	813.746	699.131	797.483	1486.314	1611.229	1374.525	16.39	17.22	8.25
6. IOC, Digboi	56.000	45.866	55.185	51.755	111.000	97.621	84.359	-16.89	15.72	-18.10
7. IOC, Panipat	1344.000	1386.002	1366.430	1316.006	2644.000	2702.008	2659.511	1.43	1.60	3.13
8. IOC, Bongaigaon	205.696	214.646	230.727	211.582	404.756	426.228	466.611	-6.97	-8.65	4.35
9. IOC, Paradip	700.000	538.270	0.000	394.268	1300.000	932.538	0.000	-	-	-23.10
Total IOC	5598.866	5601.536	4840.968	5313.073	10948.638	10914.609	8893.338	15.71	22.73	0.05
10. BPCL, Mumbai	1169.114	1169.347	1163.692	1145.523	2334.412	2314.870	2300.206	0.49	0.64	0.02
11. BPCL, Kochi	900.000	932.506	928.148	895.316	1799.988	1827.822	1822.025	0.47	0.32	3.61
Total BPCL	2069.114	2101.853	2091.840	2040.839	4134.400	4142.692	4122.231	0.48	0.50	1.58
12. HPCL, Mumbai	655.030	723.548	419.209	713.907	1288.930	1437.455	970.361	72.60	48.14	10.46
13. HPCL, Visakh	807.589	815.045	807.387	803.780	1589.224	1618.825	1546.217	0.95	4.70	0.92
Total HPCL	1462.619	1538.593	1226.596	1517.687	2878.154	3056.280	2516.578	25.44	21.45	5.19
14. CPCL, Manali	886.000	802.206	907.236	820.049	1744.000	1622.255	1807.267	-11.58	-10.24	-9.46
15. CPCL, CBR	51.000	49.610	43.315	55.691	100.300	105.301	82.394	14.53	27.80	-2.73
Total CPCL	937.000	851.816	950.551	875.740	1844.300	1727.556	1889.661	-10.39	-8.58	-9.09
16. NRL, Numaligarh	231.366	238.340	150.793	216.529	455.532	454.870	152.254	58.06	198.76	3.01
17. MRPL, Mangalore	1475.000	1232.446	1336.096	1165.909	2645.000	2398.355	2447.511	-7.76	-2.01	-16.44
18. ONGC, Tatipaka	3.952	6.400	4.209	6.805	7.823	13.206	8.209	52.06	60.88	61.96
B. Joint Venture Sub Total	1321.017	1561.685	1496.264	1453.766	2616.356	3015.450	2393.672	4.37	25.98	18.22
19. BORL, Bina	525.000	616.515	571.135	533.577	1050.000	1150.091	572.649	7.95	100.84	17.43
20. HMEL, GGSR, Bhatinda	796.017	945.170	925.129	920.189	1566.356	1865.359	1821.023	2.17	2.43	18.74
C. Private Sector	7535.215	6817.399	7607.833	7565.324	14270.222	14382.723	14370.280	-10.39	0.09	-9.53
21. RIL, Jamnagar	2740.206	2856.327	2740.206	2731.950	4764.066	5588.277	4764.066	4.24	17.30	4.24
22. RIL, SEZ	3104.019	2182.508	3104.019	3114.526	6124.175	5297.034	6124.175	-29.69	-13.51	-29.69
Total RIL	5844.225	5038.835	5844.225	5846.476	10888.241	10885.311	10888.241	-13.78	-0.03	-13.78
23. EOL, Vadinar	1690.990	1778.564	1763.608	1718.848	3381.981	3497.412	3482.039	0.85	0.44	5.18
TOTAL(A+B+C)	20634.148	19950.068	19705.151	20155.672	39800.425	40105.740	36793.734	1.24	9.00	-3.32

Note: Totals may not tally due to rounding off figures. *: Provisional. **: Revised

Reasons for shortfall are indicated in the note.

MINISTRY OF PETROLEUM & NATURAL GAS

Refinery-wise Capacity Utilisation during the month of May, 2016 and cumulatively for the period April, 2016-May, 2016 vis-à-vis April, 2015-May, 2015

(Qty: '000' Tonnes)

Name of Undertaking/Unit	May, 2016			May, 2015			Cumulative (April - May)					
	Prorated Installed Capacity	Actual Crude T'put *	% Utilisation of Installed Capacity	Prorated Installed Capacity	Actual Crude T'put	% Utilisation of Installed Capacity	2016-17			2015-16		
							Prorated Installed Capacity	Actual Crude T'put *	% Utilisation of Installed Capacity	Prorated Installed Capacity	Actual Crude T'put **	% Utilisation of Installed Capacity
(1)	(2)	(3)	(4)	(5)	(6)	(7)	(8)	(9)	(10)	(11)	(12)	(13)
A. Public Sector	11471.00	11570.98	100.87	10170.00	10601.05	104.24	22573.00	22707.57	100.60	20011.00	20029.78	100.09
1. IOC, Guwahati	85.00	72.84	85.69	85.00	95.26	112.07	167.00	148.26	88.78	167.00	188.78	113.04
2. IOC, Barauni	510.00	576.67	113.07	508.00	527.14	103.77	1003.00	1135.93	113.25	1000.00	1001.56	100.16
3. IOC, Gujarat	1164.00	1240.31	106.56	1160.00	1204.39	103.83	2290.00	2455.27	107.22	2283.00	1808.17	79.20
4. IOC, Haldia	637.00	713.19	111.96	635.00	662.71	104.36	1253.00	1405.52	112.17	1250.00	1309.82	104.79
5. IOC, Mathura	679.00	813.75	119.84	678.00	699.13	103.12	1337.00	1611.23	120.51	1333.00	1374.53	103.12
6. IOC, Digboi	55.00	45.87	83.39	55.00	55.19	100.34	109.00	97.62	89.56	108.00	84.36	78.11
7. IOC, Panipat	1274.00	1386.00	108.79	1270.00	1366.43	107.59	2507.00	2702.01	107.78	2500.00	2659.51	106.38
8. IOC, Bongaigaon	200.00	214.65	107.32	199.00	230.73	115.94	393.00	426.23	108.45	392.00	466.61	119.03
9. IOC, Paradip	1274.00	538.27	42.25	0.00	0.00	0.00	2507.00	932.54	37.20	0.00	0.00	0.00
Total IOC	5877.00	5601.54	95.31	4591.00	4840.97	105.44	11565.00	10914.61	94.38	9033.00	8893.34	98.45
10. BPCL, Mumbai	1019.00	1169.35	114.75	1016.00	1163.69	114.54	2005.00	2314.87	115.45	2000.00	2300.21	115.01
11. BPCL, Kochi	807.00	932.51	115.55	805.00	928.15	115.30	1588.00	1827.82	115.10	1583.00	1822.03	115.10
Total BPCL	1826.00	2101.85	115.11	1821.00	2091.84	114.87	3593.00	4142.69	115.30	3583.00	4122.23	115.05
12. HPCL, Mumbai	552.00	723.55	131.08	551.00	419.21	76.08	1086.00	1437.45	132.36	1083.00	970.36	89.60
13. HPCL, Visakh	705.00	815.05	115.61	703.00	807.39	114.85	1387.00	1618.83	116.71	1383.00	1546.22	111.80
Total HPCL	1257.00	1538.59	122.40	1254.00	1226.60	97.81	2473.00	3056.28	123.59	2467.00	2516.58	102.01
14. CPCL, Manali	892.00	802.21	89.93	889.00	907.24	102.05	1755.00	1622.26	92.44	1750.00	1807.27	103.27
15. CPCL, CBR	85.00	49.61	58.36	85.00	43.32	50.96	167.00	105.30	63.05	167.00	82.39	49.34
Total CPCL	977.00	851.82	87.19	974.00	950.55	97.59	1922.00	1727.56	89.88	1917.00	1889.66	98.57
16. NRL, Numaligarh	255.00	238.34	93.47	254.00	150.79	59.37	501.00	454.87	90.79	500.00	152.25	30.45
17. MRPL, Mangalore	1274.00	1232.45	96.74	1270.00	1336.10	105.20	2507.00	2398.36	95.67	2500.00	2447.51	97.90
18. ONGC, Tatipaka	6.00	6.40	106.67	6.00	4.21	70.15	11.00	13.21	120.05	11.00	8.21	74.62
B. Joint Venture Sub Total	1274.00	1561.68	122.58	1270.00	1496.26	117.82	2507.00	3015.45	120.28	2500.00	2393.67	95.75
19. BORL, Bina	510.00	616.51	120.89	508.00	571.14	112.43	1003.00	1150.09	114.67	1000.00	572.65	57.26
20. HMEL, GGSr, Bhatinda	764.00	945.17	123.71	762.00	925.13	121.41	1504.00	1865.36	124.03	1500.00	1821.02	121.40
C. Private Sector	6795.00	6817.40	100.33	6776.00	7607.83	112.28	13370.00	14382.72	107.57	13333.00	14370.28	107.78
21. RIL, Jamnagar	2803.00	2856.33	101.90	2795.00	2740.21	98.04	5515.00	5588.28	101.33	5500.00	4764.07	86.62
22. RIL, SEZ	2293.00	2182.51	95.18	2287.00	3104.02	135.72	4512.00	5297.03	117.40	4500.00	6124.18	136.09
Total RIL	5096.00	5038.83	98.88	5082.00	5844.23	115.00	10027.00	10885.31	108.56	10000.00	10888.24	108.88
23. EOL, Vadinar	1699.00	1778.56	104.68	1694.00	1763.61	104.11	3342.00	3497.41	104.65	3333.00	3482.04	104.47
TOTAL(A+B+C)	19540.00	19950.07	102.10	18216.00	19705.15	108.17	38449.00	40105.74	104.31	35844.00	36793.73	102.65

*: Provisional. **: Revised

MINISTRY OF PETROLEUM & NATURAL GAS

Production of Petroleum Products during the month of May, 2016 and cumulatively for the period April, 2016-May, 2016 vis-à-vis April, 2015-May, 2015

(Qty: '000' Tonnes)

Name of Undertaking/Unit	Planned production during the month	Production during the			Cumulative Production			% variation over last year		% variation during the month under review over planned production
		Month under review *	Corresponding month of last year	Preceding month of current year **	(April-May)			During the month under review	Upto the end of the period	
					Planned production during current year	Actual production during current year*	Actual production during corresponding period of last year**			
(1)	(2)	(3)	(4)	(5)	(5)	(6)	(7)	(8)	(9)	(10)
I. Refinery										
A. Public Sector	10970.282	10892.823	10028.081	10339.947	21325.037	21232.770	18752.988	8.62	13.22	-0.71
1. IOC, Guwahati	81.571	94.753	103.239	101.629	160.018	196.382	200.818	-8.22	-2.21	16.16
2. IOC, Barauni	502.743	523.090	503.487	516.748	989.304	1039.838	941.890	3.89	10.40	4.05
3. IOC, Gujarat	1176.279	1201.873	1167.573	1116.933	2263.612	2318.806	1705.864	2.94	35.93	2.18
4. IOC, Haldia	628.000	638.849	613.750	597.955	1244.000	1236.804	1161.308	4.09	6.50	1.73
5. IOC, Mathura	716.202	770.218	702.547	752.708	1425.886	1522.926	1351.854	9.63	12.65	7.54
6. IOC, Digboi	56.283	43.284	53.668	51.966	111.683	95.250	74.670	-19.35	27.56	-23.10
7. IOC, Panipat	1312.300	1422.266	1346.518	1347.532	2583.000	2769.798	2658.188	5.63	4.20	8.38
8. IOC, Bongaigaon	185.938	183.672	207.997	192.510	365.858	376.182	405.610	-11.69	-7.26	-1.22
9. IOC, Paradip	595.800	433.204	0.000	345.059	1105.300	778.263	0.000	-	-	-27.29
Total IOC	5255.116	5311.209	4698.779	5023.040	10248.660	10334.249	8500.202	13.03	21.58	1.07
10. BPCL, Mumbai	1121.440	1137.418	1122.414	1079.717	2242.288	2217.134	2193.334	1.34	1.09	1.42
11. BPCL, Kochi	832.523	908.590	875.818	807.842	1665.591	1716.432	1715.123	3.74	0.08	9.14
Total BPCL	1953.963	2046.008	1998.232	1887.559	3907.879	3933.566	3908.457	2.39	0.64	4.71
12. HPCL, Mumbai	604.820	680.845	370.172	637.751	1190.129	1318.596	867.511	83.93	52.00	12.57
13. HPCL, Visakh	742.970	725.746	748.387	741.318	1462.386	1467.064	1401.000	-3.03	4.72	-2.32
Total HPCL	1347.790	1406.591	1118.559	1379.069	2652.514	2785.660	2268.511	25.75	22.80	4.36
14. CPCL, Manali	805.920	743.219	832.691	724.066	1586.808	1467.285	1655.009	-10.74	-11.34	-7.78
15. CPCL, CBR	51.216	49.661	44.071	55.818	100.890	105.479	83.896	12.68	25.73	-3.04
Total CPCL	857.137	792.880	876.762	779.884	1687.699	1572.764	1738.905	-9.57	-9.55	-7.50
16. NRL, Numaligarh	232.576	239.264	123.118	209.872	458.765	449.136	129.533	94.34	246.73	2.88
17. MRPL, Mangalore	1319.800	1090.585	1208.647	1053.842	2361.800	2144.427	2199.436	-9.77	-2.50	-17.37
18. ONGC, Tatipaka	3.900	6.286	3.983	6.682	7.720	12.967	7.944	57.81	63.24	61.18
B. Joint Venture Sub Total	1236.251	1483.669	1306.134	1326.323	2448.203	2809.992	2145.311	13.59	30.98	20.01
19. BOREL, Bina	484.100	575.053	435.865	451.960	968.200	1027.013	436.184	31.93	135.45	18.79
20. HMEL, GGSR, Bhatinda	752.151	908.616	870.269	874.363	1480.003	1782.979	1709.127	4.41	4.32	20.80
C. Private Sector	7824.726	7419.040	7863.745	7628.857	14401.102	15047.897	14449.710	-5.66	4.14	-5.18
21. RIL, Jamnagar	2792.373	2871.388	2792.373	2586.062	4852.626	5457.450	4852.626	2.83	12.46	2.83
22. RIL, SEZ	3399.807	2798.333	3399.807	3431.558	6283.384	6229.891	6283.384	-17.69	-0.85	-17.69
Total RIL	6192.180	5669.721	6192.180	6017.620	11136.010	11687.341	11136.010	-8.44	4.95	-8.44
23. EOL, Vadinar	1632.546	1749.319	1671.565	1611.237	3265.092	3360.556	3313.700	4.65	1.41	7.15
TOTAL(A+B+C)	20031.259	19795.531	19197.960	19295.128	38174.342	39090.659	35348.009	3.11	10.59	-1.18
II. Fractionators										
ONGC	218.436	263.082	217.669	220.072	443.640	483.154	428.874	20.86	12.66	20.44
OIL	3.600	3.075	3.693	3.349	7.100	6.424	7.460	-16.73	-13.89	-14.58
GAIL	91.794	88.725	92.850	84.856	180.529	173.581	181.786	-4.44	-4.51	-3.34
D. Total Fractionators	313.830	354.882	314.212	308.277	631.269	663.159	618.120	12.94	7.29	13.08
Grand Total (A+B+C+D)	20345.089	20150.413	19512.172	19603.405	38805.611	39753.818	35966.130	3.27	10.53	-0.96

Note: Totals may not tally due to rounding off figures.

*: Provisional.

**: Revised