

MINISTRY OF PETROLEUM & NATURAL GAS

Review of Crude Oil Production during the month of September, 2015 and cumulatively for the period April-September, 2015 vis-à-vis April-September, 2014

(Qty: '000' Tonnes)

Name of Undertaking/Unit/State	Planned production during the month	Production during the			Cumulative Production			% variation over last year		% variation during the month under review over planned production
		Month under review *	Corresponding month of last year	Preceding month of current year	(April - September)			During the month under review	Upto the end of the period	
					Planned production during current year	Actual production during current year **	Actual production during corresponding period of last year			
(1)	(2)	(3)	(4)	(5)	(6)	(7)	(8)	(9)	(10)	(11)
1. ONGC	1896.014	1856.795	1810.419	1929.264	11325.969	11241.436	11063.549	2.56	1.61	-2.07
Onshore	499.804	478.002	489.731	492.769	3000.815	2890.805	3090.614	-2.39	-6.47	-4.36
Andhra Pradesh	23.589	24.139	19.122	25.447	138.302	151.085	123.341	26.24	22.49	2.33
Assam ^	82.006	78.110	86.635	81.638	486.959	484.327	564.809	-9.84	-14.25	-4.75
Gujarat	372.076	355.514	366.131	363.953	2245.139	2125.151	2283.446	-2.90	-6.93	-4.45
Tamil Nadu	22.133	20.239	17.843	21.731	130.415	130.242	119.019	13.43	9.43	-8.56
Offshore	1396.210	1378.793	1320.688	1436.495	8325.154	8350.631	7972.934	4.40	4.74	-1.25
Eastern Offshore	0.835	1.763	1.313	1.787	6.880	10.958	7.224	34.27	51.68	111.14
Western Offshore	1279.488	1266.794	1203.293	1321.859	7627.514	7687.229	7219.566	5.28	6.48	-0.99
Condensates	115.887	110.236	116.082	112.849	690.760	652.444	746.144	-5.04	-12.56	-4.88
2. OIL (Onshore)	293.397	261.514	279.203	276.024	1763.252	1649.661	1707.919	-6.34	-3.41	-10.87
Assam	292.856	261.048	278.629	275.578	1760.451	1647.329	1704.048	-6.31	-3.33	-10.86
Arunachal Pradesh	0.541	0.466	0.574	0.446	2.801	2.332	3.871	-18.82	-39.76	-13.86
3. DGH (Private / JVC)	880.341	924.060	954.679	987.812	5348.212	5789.666	5829.958	-3.21	-0.69	4.97
Onshore	677.922	708.541	731.908	754.123	4135.098	4432.821	4498.967	-3.19	-1.47	4.52
Arunachal Pradesh	5.738	4.037	5.928	4.271	35.000	25.152	38.433	-31.90	-34.56	-29.64
Gujarat	15.855	12.625	10.343	14.152	96.489	74.030	71.945	22.06	2.90	-20.37
Rajasthan	656.329	691.879	715.637	735.700	4003.609	4333.639	4388.589	-3.32	-1.25	5.42
Offshore	202.419	215.519	222.771	233.689	1213.114	1356.845	1330.991	-3.26	1.94	6.47
Eastern Offshore	102.720	99.635	107.608	111.885	597.997	701.938	630.387	-7.41	11.35	-3.00
Gujarat Offshore	28.325	36.406	31.884	36.126	172.785	202.334	195.602	14.18	3.44	28.53
Western Offshore	71.374	79.478	83.279	85.678	442.331	452.573	505.002	-4.56	-10.38	11.35
GRAND TOTAL (1+2+3)	3069.752	3042.369	3044.301	3193.100	18437.433	18680.763	18601.426	-0.06	0.43	-0.89
Onshore	1471.123	1448.057	1500.842	1522.916	8899.165	8973.287	9297.500	-3.52	-3.49	-1.57
Offshore	1598.629	1594.312	1543.459	1670.184	9538.268	9707.476	9303.925	3.29	4.34	-0.27

Note: Totals September not tally due to rounding off figures.
Reasons for shortfall are indicated in the note.

^: Includes crude oil production of Tripura

*: Provisional. **: Revised

MINISTRY OF PETROLEUM & NATURAL GAS

Review of Natural Gas Production during the month of September, 2015 and cumulatively for the period April-September, 2015 vis-à-vis April-September, 2014

(Qty: Million Cubic Meters)

Name of Undertaking/Unit/State	Planned production during the month	Production during the			Cumulative Production (April - September)			% variation over last year		% variation during the month under review over planned production
		Month under review *	Corresponding month of last year	Preceding month of current year	Planned production during current year	Actual production during current year	Actual production during corresponding period of last year	During the month under review	Upto the end of the period	
(1)	(2)	(3)	(4)	(5)	(6)	(7)	(8)	(9)	(10)	(11)
1. ONGC	2001.020	1815.394	1778.347	1855.815	11704.476	10837.888	10979.910	2.08	-1.29	-9.28
Onshore	449.756	390.924	344.266	398.714	2595.987	2378.403	2417.818	13.55	-1.63	-13.08
Andhra Pradesh	75.425	41.390	6.288	47.257	352.439	291.518	306.527	558.24	-4.90	-45.12
Assam	38.529	33.326	37.094	34.434	226.664	201.065	234.245	-10.16	-14.16	-13.50
Gujarat	100.180	119.768	113.440	114.323	613.669	694.424	710.709	5.58	-2.29	19.55
Rajasthan	1.230	0.392	0.083	0.210	7.500	2.587	2.380	372.29	8.69	-68.12
Tamil Nadu	104.611	85.877	92.763	88.303	614.021	548.742	636.303	-7.42	-13.76	-17.91
Tripura	129.782	110.171	94.598	114.187	781.695	640.067	527.654	16.46	21.30	-15.11
Offshore	1551.264	1424.470	1434.081	1457.101	9108.489	8459.485	8562.091	-0.67	-1.20	-8.17
Eastern Offshore	72.514	20.258	1.144	21.283	358.160	127.495	8.152	1670.80	1464.04	-72.06
Western Offshore	1478.750	1404.212	1432.937	1435.818	8750.329	8331.990	8553.940	-2.00	-2.59	-5.04
2. OIL	264.206	227.080	217.813	242.658	1481.079	1343.965	1370.620	4.25	-1.94	-14.05
Assam	241.566	210.442	197.009	224.696	1365.325	1246.358	1273.475	6.82	-2.13	-12.88
Arunachal Pradesh	1.140	0.866	1.000	0.416	6.924	5.479	5.769	-13.40	-5.03	-24.04
Rajasthan	21.500	15.772	19.804	17.546	108.830	92.128	91.376	-20.36	0.82	-26.64
3. DGH (Private / JVC)	676.985	707.580	729.911	737.882	4232.300	4266.982	4458.657	-3.06	-4.30	4.52
Onshore	81.905	106.552	91.810	110.851	499.620	600.843	493.235	16.06	21.82	30.09
Arunachal Pradesh	0.909	1.320	1.872	1.560	5.545	9.668	10.437	-29.49	-7.37	45.21
Gujarat	6.061	7.331	8.848	7.728	36.970	46.642	54.102	-17.15	-13.79	20.96
Rajasthan	74.935	97.901	81.090	101.563	457.104	544.533	428.696	20.73	27.02	30.65
CBM	50.656	33.417	16.949	34.304	309.003	195.893	106.219	97.16	84.42	-34.03
Jharkhand (CBM)	0.287	0.146	0.147	0.169	1.753	0.669	1.223	-0.68	-45.30	-49.20
Madhya Pradesh (CBM)	3.570	0.088	0.091	0.094	21.780	0.868	1.572	-3.30	-44.78	-97.54
West Bengal (CBM)	46.798	33.183	16.711	34.041	285.470	194.356	103.424	98.57	87.92	-29.09
Offshore	544.424	567.611	621.152	592.727	3423.677	3470.246	3859.203	-8.62	-10.08	4.26
Eastern Offshore	397.654	372.698	395.306	393.491	2418.314	2331.641	2502.516	-5.72	-6.83	-6.28
Gujarat Offshore	3.426	6.294	10.303	6.006	20.900	33.153	65.483	-38.91	-49.37	83.70
Western Offshore	143.344	188.619	215.543	193.230	984.463	1105.452	1291.204	-12.49	-14.39	31.59
TOTAL (1+2+3)	2942.211	2750.054	2726.071	2836.355	17417.855	16448.835	16809.187	0.88	-2.14	-6.53
CBM	50.656	33.417	16.949	34.304	309.003	195.893	106.219	97.16	84.42	-34.03
Onshore	795.867	724.556	653.889	752.223	4576.686	4323.212	4281.673	10.81	0.97	-8.96
Offshore	2095.688	1992.081	2055.233	2049.828	12532.166	11929.731	12421.294	-3.07	-3.96	-4.94

Note: Totals September not tally due to rounding off figures.

*: Provisional. **: Revised

CBM: Coal Bed Methane production.

Reasons for shortfall are indicated in the note.

MINISTRY OF PETROLEUM & NATURAL GAS

Review of Refinery Crude Throughput (in terms of crude oil processed) during the month of September, 2015 and cumulatively for the period April-September, 2015 vis-à-vis April-September, 2014

(Qty: '000' Tonnes)

Name of Undertaking/Unit	Planned production during the month	Production during the			Cumulative Production			% variation over last year		% variation during the month under review over planned production
		Month under review *	Corresponding month of last year	Preceding month of current year	(April - September)			During the month under review	Upto the end of the period	
					Planned production during current year	Actual production during current year **	Actual production during corresponding period of last year			
(1)	(2)	(3)	(4)	(5)	(6)	(7)	(8)	(9)	(10)	(11)
A. Public Sector	9907.252	9733.127	9891.432	10296.550	59777.766	60671.835	59023.475	-1.60	2.79	-1.76
1. IOC, Guwahati	90.000	71.930	83.767	78.504	539.000	517.098	499.014	-14.13	3.62	-20.08
2. IOC, Barauni	516.370	526.941	390.535	565.999	3150.000	3169.659	3122.210	34.93	1.52	2.05
3. IOC, Gujarat	1177.702	1065.664	1028.983	1190.816	6104.952	6497.093	6623.657	3.56	-1.91	-9.51
4. IOC, Haldia	665.000	491.446	622.133	667.202	3770.000	3798.832	3843.113	-21.01	-1.15	-26.10
5. IOC, Mathura	705.000	695.800	638.574	703.472	4193.000	4263.845	4244.770	8.96	0.45	-1.30
6. IOC, Digboi	51.000	44.598	51.482	53.402	317.000	282.780	303.550	-13.37	-6.84	-12.55
7. IOC, Panipat	1044.000	1268.988	1162.554	1086.831	7350.000	7418.949	6531.522	9.16	13.59	21.55
8. IOC, Bongaigaon	198.295	209.637	193.290	212.166	1209.600	1302.314	1105.326	8.46	17.82	5.72
Total IOC	4447.366	4375.004	4171.318	4558.392	26633.552	27250.570	26273.162	4.88	3.72	-1.63
9. BPCL, Mumbai	1077.000	997.239	1056.794	1094.920	6403.000	6548.025	6164.221	-5.64	6.23	-7.41
10. BPCL, Kochi	880.000	901.466	912.656	938.091	5370.000	5492.799	5270.802	-1.23	4.21	2.44
Total BPCL	1957.000	1898.705	1969.450	2033.011	11773.000	12040.825	11435.023	-3.59	5.30	-2.98
11. HPCL, Mumbai	566.317	696.583	676.654	693.288	3359.871	3702.946	3435.509	2.95	7.78	23.00
12. HPCL, Visakh	778.498	802.485	824.643	858.162	4351.131	4261.482	4328.795	-2.69	-1.56	3.08
Total HPCL	1344.815	1499.068	1501.297	1551.450	7711.003	7964.427	7764.304	-0.15	2.58	11.47
13. CPCL, Manali	876.800	685.018	815.516	500.876	4951.800	4606.101	5078.822	-16.00	-9.31	-21.87
14. CPCL, Narimanam(CBR)	41.100	46.205	35.298	48.287	250.680	274.064	283.112	30.90	-3.20	12.42
Total CPCL	917.900	731.223	850.814	549.163	5202.480	4880.165	5361.934	-14.06	-8.98	-20.34
15. NRL, Numaligarh	235.000	247.768	228.398	252.93427	1276.000	1166.331	1451.602	8.48	-19.65	5.43
16. MRPL, Mangalore	1000.000	976.104	1166.116	1349.041	7150.000	7342.717	6711.501	-16.29	9.40	-2.39
17. ONGC, Tatipaka	5.171	5.256	4.039	2.558	31.732	26.800	25.948	30.13	3.28	1.64
B. Joint Venture Sub Total	1007.705	1526.636	645.837	1557.552	6700.000	8529.158	5360.409	136.38	59.11	51.50
18. BORL, Bina	270.000	619.686	570.498	620.193	2200.000	3044.687	2849.414	8.62	6.85	129.51
19. HMEL, GGSR, Bhatinda	737.705	906.950	75.339	937.358	4500.000	5484.471	2510.996	1103.82	118.42	22.94
C. Private Sector	7209.928	6783.198	7419.472	7757.641	43580.013	43399.601	44253.401	-8.58	-1.93	-5.92
20. RIL, Jamnagar	2681.273	2731.057	2681.273	2787.694	15285.127	15812.695	15285.127	1.86	3.45	1.86
21. RIL, SEZ	3057.322	3098.259	3057.322	3211.048	18787.227	17946.970	18787.227	1.34	-4.47	1.34
Total RIL	5738.595	5829.316	5738.595	5998.742	34072.354	33759.665	34072.354	1.58	-0.92	1.58
22. Essar Oil Ltd.(EOL), Vadinar	1471.333	953.882	1680.877	1758.899	9507.659	9639.936	10181.047	-43.25	-5.31	-35.17
TOTAL(A+B+C)	18124.886	18042.961	17956.740	19611.742	110057.779	112600.594	108637.285	0.48	3.65	-0.45

Note: Totals September not tally due to rounding off figures. *: Provisional. **: Revised

Reasons for shortfall are indicated in the note.

MINISTRY OF PETROLEUM & NATURAL GAS

Refinery-wise Capacity Utilisation during the month of September, 2015 and cumulatively for the period April-September, 2015 vis-à-vis April-September, 2014

(Qty: '000' Tonnes)

Name of Undertaking/Unit	September, 2015			September, 2014			Cumulative (April - September)					
	Prorated Installed Capacity	Actual Crude T'put *	% Utilisation of I/C	Prorated Installed Capacity	Actual Crude T'put	% Utilisation of I/C	2015-16			2014-15		
							Prorated Installed Capacity	Actual Crude T'put *	% Utilisation of I/C	Prorated Installed Capacity	Actual Crude T'put	% Utilisation of I/C
(1)	(2)	(3)	(4)	(5)	(6)	(7)	(8)	(9)	(10)	(11)	(12)	(13)
A. Public Sector	9841.000	9733.127	98.90	9868.000	9891.432	100.24	60033.000	60671.835	101.06	60197.000	59023.475	98.05
1. IOC, Guwahati	82.000	71.930	87.72	82.000	83.767	102.15	500.000	517.098	103.42	501.000	499.014	99.60
2. IOC, Barauni	492.000	526.941	107.10	493.000	390.535	79.22	3000.000	3169.659	105.66	3008.000	3122.210	103.80
3. IOC, Koyali	1123.000	1065.664	94.89	1126.000	1028.983	91.38	6850.000	6497.093	94.85	6869.000	6623.657	96.43
4. IOC, Haldia	615.000	491.446	79.91	616.000	622.133	101.00	3750.000	3798.832	101.30	3760.000	3843.113	102.21
5. IOC, Mathura	656.000	695.800	106.07	658.000	638.574	97.05	4000.000	4263.845	106.60	4011.000	4244.770	105.83
6. IOC, Digboi	53.000	44.598	84.15	53.000	51.482	97.14	325.000	282.780	87.01	326.000	303.550	93.11
7. IOC, Panipat	1230.000	1268.988	103.17	1233.000	1162.554	94.29	7500.000	7418.949	98.92	7521.000	6531.522	86.84
8. IOC, Bongaigaon	193.000	209.637	108.62	193.000	193.290	100.15	1175.000	1302.314	110.84	1178.000	1105.326	93.83
Total IOC	4443.000	4375.004	98.47	4455.000	4171.318	93.63	27100.000	27250.570	100.56	27174.000	26273.162	96.68
9. BPCL, Mumbai	984.000	997.239	101.35	986.000	1056.794	107.18	6000.000	6548.025	109.13	6016.000	6164.221	102.46
10. BPCL, Kochi	779.000	901.466	115.72	781.000	912.656	116.86	4750.000	5492.799	115.64	4763.000	5270.802	110.66
Total BPCL	1762.000	1898.705	107.76	1767.000	1969.450	0.00	10750.000	12040.825	112.01	10779.000	11435.023	106.09
12. HPCL, Mumbai	533.000	696.583	130.69	534.000	570.498	106.83	3250.000	3702.946	113.94	3259.000	3435.509	105.42
13. HPCL, Visakh	680.000	802.485	118.01	682.000	824.643	120.92	4150.000	4261.482	102.69	4161.000	4328.795	104.03
Total HPCL	1213.000	1499.068	123.58	1216.000	1501.297	123.46	7400.000	7964.427	107.63	7420.000	7764.304	104.64
14. CPCL, Manali	861.000	685.018	79.56	863.000	815.516	94.50	5250.000	4606.101	87.74	5264.000	5078.822	96.48
15. CPCL, Narimanam	82.000	46.205	56.35	82.000	35.298	43.05	500.000	274.064	54.81	501.000	283.112	56.51
Total CPCL	943.000	731.223	77.54	945.000	850.814	90.03	5750.000	4880.165	84.87	5766.000	5361.934	92.99
16. NRL, Numaligarh	246.000	247.768	100.72	247.000	228.398	92.47	1500.000	1166.331	77.76	1504.000	1451.602	96.52
17. MRPL, Mangalore	1230.000	976.104	79.36	1233.000	1166.116	94.58	7500.000	7342.717	97.90	7521.000	6711.501	89.24
18. ONGC, Tatipaka	5.000	5.256	105.12	5.000	4.039	80.78	33.000	26.800	81.21	33.000	25.948	78.63
B. Joint Venture Sub Total	1230.000	1526.636	124.12	1233.000	645.837	52.38	7500.000	8529.158	113.72	7521.000	5360.409	71.27
18. BORL, Bina	492.000	619.686	125.95	493.000	570.498	115.72	3000.000	3044.687	101.49	3008.000	2849.414	94.73
19. HMEL, GGSR, Bhatinda	738.000	906.950	122.89	740.000	75.339	10.18	4500.000	5484.471	121.88	4512.000	2510.996	55.65
C. Private Sector	6557.000	6783.198	103.45	6575.000	7419.472	112.84	40000.000	43399.601	108.50	40110.000	44253.401	110.33
20. RIL, Jamnagar	2705.000	2731.057	100.96	2712.000	2681.273	98.87	16500.000	15812.695	95.83	16545.000	15285.127	92.39
21. RIL, SEZ	2213.000	3098.259	140.00	2219.000	3057.322	137.78	13500.000	17946.970	132.94	13537.000	18787.227	138.78
Total RIL	4918.000	5829.316	118.53	4932.000	5738.595	116.35	30000.000	33759.665	112.53	30082.000	34072.354	113.26
22. Essar Oil Ltd.(EOL), Vadinar	1639.000	953.882	58.20	1644.000	1680.877	102.24	10000.000	9639.936	96.40	10027.000	10181.047	101.54
TOTAL	17628.000	18042.961	102.35	17677.000	17956.740	101.58	107533.000	112600.594	104.71	107828.000	108637.285	100.75

*: Provisional.

I/C: Installed Capacity.

MINISTRY OF PETROLEUM & NATURAL GAS

Review of Production of Petroleum Products during the month of September, 2015 and cumulatively for the period April-September, 2015 vis-à-vis April-September, 2014

(Qty: '000' Tonnes)

Name of Undertaking/Unit	Planned production during the month	Production during the			Cumulative Production			% variation over last year		% variation during the month under review over planned production
		Month under review *	Corresponding month of last year	Preceding month of current year **	(April - September)			During the month under review	Upto the end of the period	
					Planned production during current year	Actual production during current year	Actual production during corresponding period of last year			
(1)	(2)	(3)	(4)	(5)	(6)	(7)	(8)	(9)	(10)	(11)
I. Production of Petroleum Products by Refinery										
A. Public Sector	9220.862	9235.152	9383.000	9801.741	55635.855	57240.760	55648.131	-1.58	2.86	0.15
1. IOC, Guwahati	80.766	88.693	89.804	106.909	474.871	620.025	484.524	-1.24	27.97	9.81
2. IOC, Barauni	469.222	482.503	380.903	519.447	2887.206	2925.320	2864.963	26.67	2.11	2.83
3. IOC, Koyali, Gujarat	1086.787	1033.695	971.984	1158.094	5723.991	6206.062	6239.682	6.35	-0.54	-4.89
4. IOC, Haldia	602.900	460.151	558.879	615.824	3403.491	3503.209	3543.591	-17.67	-1.14	-23.68
5. IOC, Mathura	695.244	691.182	589.318	635.565	4080.595	4129.815	4117.738	17.29	0.29	-0.58
6. IOC, Digboi	42.812	41.774	47.408	52.905	306.400	272.189	301.855	-11.88	-9.83	-2.42
7. IOC, Panipat	992.082	1245.667	1215.334	1142.873	6936.299	7420.117	6503.729	2.50	14.09	25.56
8. IOC, Bongaigaon	178.934	199.474	177.953	187.968	1091.460	1178.974	988.118	12.09	19.32	11.48
Total IOC	4148.747	4243.139	4031.583	4419.585	24904.313	26255.711	25044.200	5.25	4.84	2.28
9. BPCL, Mumbai	1029.330	962.805	967.514	1044.063	6123.310	6268.456	5891.371	-0.49	6.40	-6.46
10. BPCL, Kochi	821.500	832.435	874.937	896.197	5012.800	5180.399	4949.345	-4.86	4.67	1.33
Total BPCL	1850.830	1795.240	1842.451	1940.260	11136.110	11448.855	10840.715	-2.56	5.61	-3.00
11. HPCL, Mumbai	531.188	657.770	647.044	668.320	3152.263	3381.622	3267.366	1.66	3.50	23.83
12. HPCL, Visakh	717.677	753.008	812.117	796.128	4007.846	3867.046	4107.657	-7.28	-5.86	4.92
Total HPCL	1248.865	1410.778	1459.162	1464.448	7160.109	7248.668	7375.023	-3.32	-1.71	12.96
13. CPCL, Manali	798.756	619.231	765.757	442.470	4487.821	4208.205	4662.739	-19.13	-9.75	-22.48
14. CPCL, Narimanam(CBR)	41.798	46.902	36.096	49.060	254.935	278.389	287.127	29.94	-3.04	12.21
Total CPCL	840.554	666.133	801.853	491.530	4742.756	4486.594	4949.866	-16.93	-9.36	-20.75
15. NRL, Numaligarh	227.770	247.038	230.333	257.094	1233.530	1142.523	1424.511	7.25	-19.80	8.46
16. MRPL, Mangalore	899.000	867.661	1013.638	1226.309	6427.765	6632.175	5988.235	-14.40	10.75	-3.49
17. ONGC, Tatipaka	5.096	5.164	3.981	2.515	31.272	26.234	25.581	29.72	2.55	1.33
B. Joint Venture Sub Total	943.624	1471.306	627.186	1432.910	6258.061	7986.067	4960.267	134.59	61.00	55.92
18. BORL Bina	247.050	582.623	549.494	574.264	2013.000	2770.110	2621.854	6.03	5.65	135.83
19. HMEI, GGSR, Bhatinda	696.574	888.683	77.692	858.646	4245.061	5215.957	2338.413	1043.85	123.06	27.58
C. Private Sector	7632.319	6945.322	7841.950	8018.917	44713.592	44845.758	45353.590	-11.43	-1.12	-9.00
1. RIL, Jamnagar	2841.653	2687.290	2841.653	2725.828	15528.733	15779.368	15529.058	-5.43	1.61	-5.43
2. RIL (SEZ)	3366.512	3336.686	3366.512	3619.791	19980.186	19820.264	19980.186	-0.89	-0.80	-0.89
Total RIL	6208.165	6023.976	6208.165	6345.619	35508.919	35599.632	35509.244	-2.97	0.25	-2.97
3. Essar Oil Ltd.(EOL), Vadinar	1424.154	921.346	1633.785	1673.298	9204.673	9246.126	9844.346	-43.61	-6.08	-35.31
Total Refinery (A+B+C)	17796.806	17651.780	17852.135	19253.567	106607.508	110072.585	105961.988	-1.12	3.88	-0.81
II. Production of Petroleum Products by Fractionators										
ONGC	283.376	236.345	212.346	274.126	1555.893	1324.768	1363.182	11.30	-2.82	-16.60
OIL	3.750	3.391	3.935	3.425	20.350	19.317	19.552	-13.82	-1.20	-9.57
GAIL	96.230	96.968	108.963	91.164	587.000	534.459	648.317	-11.01	-17.56	0.77
D. Total Fractionators	383.356	336.704	325.244	368.715	2163.243	1878.544	2031.051	3.52	-7.51	-12.17
Grand Total (A+B+C+D)	18180.161	17988.484	18177.379	19622.282	108770.751	111951.129	107993.039	-1.04	3.67	-1.05

Note: Totals September not tally due to rounding off figures.

*: Provisional. **: Revised

Brief note on the Production Performance of Oil & Natural Gas Sector for the month of September, 2015 and cumulatively for the period April-September, 2015 vis-à-vis April-September, 2014

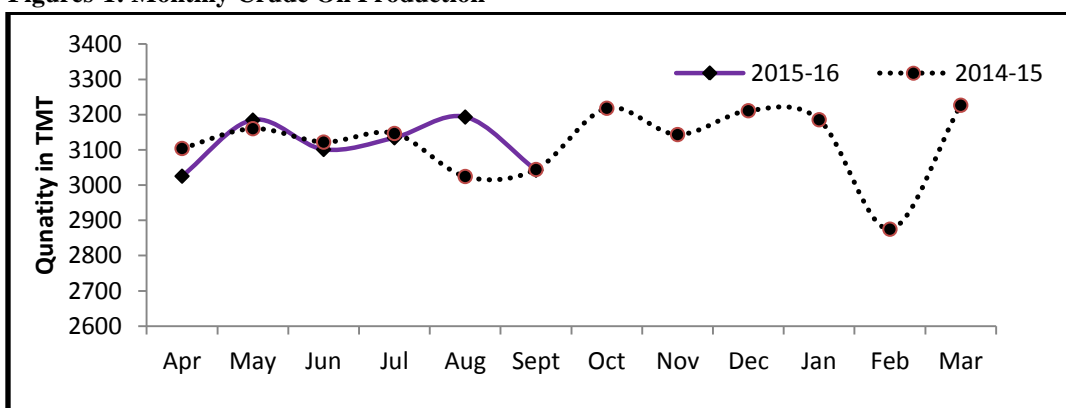
1. Crude Oil Production

1.1 Indigenous crude oil production (including condensate) during September, 2015 was 3042.369 TMT which is 0.89% lower than the target for the month and 0.06% lower than the production during corresponding period of last year. Cumulative crude oil production during April-September, 2015 was 18680.763 TMT which is 1.32% higher than target for the period and 0.43% higher than the production during corresponding period of last year. Unit-wise and state-wise crude oil production is given at annexure-I. Unit-wise crude oil production (including condensate) for the month of September, 2015 and cumulatively for the period April-September, 2015 vis-à-vis same period of last year has been shown in table-1.1 and month-wise in figure-1.1

Table 1.1: Crude Oil Production (TMT)

Oil Company	Target	September (Month)				April-September (Cumulative)			
	2015-16 (Apr-Mar)	2015-16		2014-15	% over last year	2015-16		2014-15	% over last year
		Target	Prod.	Prod.		Target	Prod.	Prod.	
ONGC	22732	1896	1857	1810	102.56	11326	11241	11064	101.61
OIL	3595	293	262	279	93.66	1763	1650	1708	96.59
PSC Fields	10719	880	924	955	96.79	5348	5790	5830	99.31
Total	37046	3070	3042	3044	99.94	18437	18681	18601	100.43

Figures-1: Monthly Crude Oil Production



1.2 ONGC's crude oil production during September, 2015 was 1856.795 TMT which is 2.07% lower than the target for the month and 2.56% higher than the production achieved in the corresponding month of last year. ONGC's cumulative production during April-September, 2015 was 11241.436 TMT which is 0.75% lower

than the cumulative target and 1.61% higher than the production during the corresponding period of last year. The shortfall in ONGC's production was due to following reason:

- ❖ Offshore: Less than expected production from Cluster-7 due to closure of 1 well closed due to high CO₂ content and 1 well converted to water injector. Less than planned production from WO-16 cluster.
- ❖ Ahmedabad & Mehsana, Gujarat: closure of Kalol-Ramol GAIL line leakage; Increase in water cut in North Kadi; Less air injection in Santhal field; Power shutdown affecting artificial lift operations.
- ❖ Assam : Power shut down, low gas injection pressure.

1.3 OIL's crude oil production during September 2015 was 261.514 TMT which is 10.87% lower than the target for the month and 6.34% lower than the production achieved in the corresponding month of last year. OIL's cumulative production during April-September, 2015 was 1649.661 TMT which is 6.44% lower than the cumulative target and 3.41% lower than the production during the corresponding period of last year. Reasons for shortfall in production are given below:

- ❖ The shortfall is mainly due to bandhs, blockades and flood because of continuous rainfall.
- ❖ Retrieval of wellhead potential by workover effort has exhibited a diminishing trend because of ageing of the major oilfields.
- ❖ Potential build-up by drilling effort falls short of expectation because of limited structural traps which can be exploited, and plateauing of majority of the established oilfields.

1.4 Pvt. /JVs' crude oil production during September, 2015 was 924.06 TMT which is 4.97% higher than the target for the month and 3.21% lower than production of corresponding month of last year. Pvt./JVs' cumulative production during April-September, 2015 was 5789.666 TMT which is 8.25% higher than the cumulative target and 0.69% lower than the production during the corresponding period of last year. Reasons for shortfall in production are given below:

- ❖ Cairn: Under performance of Bhagyam well and Ravva
- ❖ RIL: Under performance of wells in KG-D6
- ❖ JV of ONGC,BG&RIL: Natural decline in Panna Mukta
- ❖ GEOENPRO: Production lower due to sand ingress in Kharsang

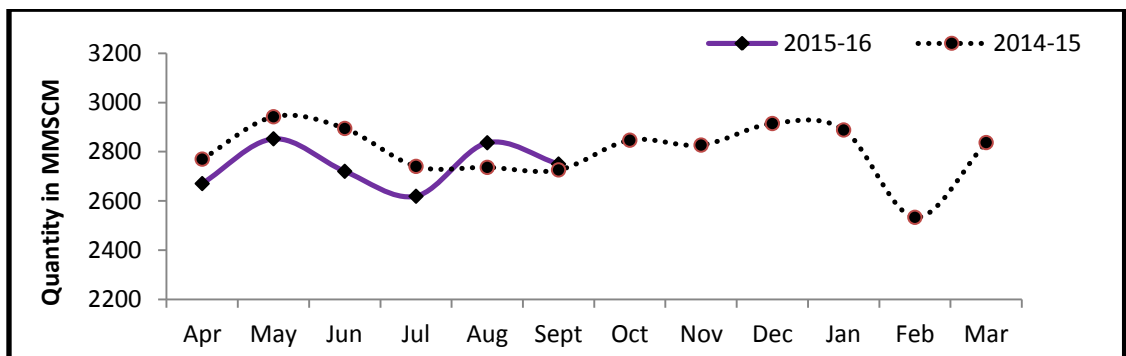
2. Natural Gas Production

2.1 Natural Gas Production during September, 2015 was 2750.054 MMSCM which is 6.53% lower than the target for the month and 0.88% higher than the production during corresponding period of last year. Cumulative natural gas production during April-September, 2015 was 16448.835 MMSCM which is 5.56% lower than the target for the period and 2.14% lower than the production during corresponding period of last year. Unit-wise and state-wise natural gas production is given at annexure-II. Unit-wise natural gas production for the month of September, 2015 and cumulatively for the period April-September, 2015 vis-à-vis same period of last year has been shown in table-2.1 and month-wise in figure-2.1.

Table 2.1: Natural Gas Production (MMSCM)

Oil Company	Target	September (Month)				April-September (Cumulative)			
	2015-16 (Apr-Mar)	2015-16		2014-15	% over last year	2015-16		2014-15	% over last year
		Target	Prod.	Prod.		Target	Prod.	Prod.	
ONGC	23908	2001	1815	1778	102.08	11704	10838	10980	98.71
OIL	3010	264	227	218	104.25	1481	1344	1371	98.06
PSC Fields	8362	677	708	730	96.94	4232	4267	4459	95.70
Total	35280	2942	2750	2726	100.88	17418	16449	16809	97.86

Figures-2.1: Monthly Natural Gas Production



2.2 ONGC's natural gas production during September, 2015 was 1815.394 MMSCM which is 9.28% lower than the target for the month and 2.08% higher than the production achieved in the corresponding month of last year. ONGC's cumulative natural gas production during April-September, 2015 was 10837.888 MMSCM which is 7.40% lower than the cumulative target and 1.29% lower than the production during the corresponding period of last year. Reasons for the shortfall are given below:

- ❖ Bassein & Satellite: Seizure of 4 wells in Bassein field. Lower than envisaged production after repair of South Bassein Heera Trunk line. Two wells of B193 kept closed due to AGDU breakdown.
- ❖ EOA: Delay in commencement of production from one deep water well planned in Eastern offshore. Restricted withdrawal by GAIL in view of pipeline safety issues.
- ❖ Ahmedabad: Closure of wells due to unplanned shut down of GAIL Gas line from Ahmedabad/Kalol to Ramol. Decline in associated gas production in South Kadi, Limbodara & Gamij fields.
- ❖ Tripura: Less off take by OTPC due to operational issues
- ❖ Rajahmundry: GAIL Pipelines in Tatipaka-Lanco & Endamaru- Oduru sectors still under repair.
- ❖ Cauvery: Less gas production due to less demand by GAIL.

2.3 OIL's natural gas production during September, 2015 was 227.080 MMSCM which is 14.05% lower than the target for the month and 4.25% higher than the production achieved in the corresponding month of

last year. OIL's cumulative natural gas production during April-September, 2015 was 1343.965 MMSCM which is 9.26% lower than the cumulative target and 1.94% lower than the production during the corresponding period of last year. Reasons for the shortfall are given below:

- ❖ Production affected due to less gas withdrawal by the potential customers like BVFCL, NTPS, LTPS, BCPL and RRVUNL.

2.4 Pvt. /JVs' natural gas production during September, 2015 was 707.580 MMSCM which is 4.52% higher than the target for the month and 3.06% lower than the production achieved in the corresponding month of last year. Pvt. /JV's cumulative natural gas production during April-September, 2015 was 4266.982 MMSCM which is 0.82% higher than the cumulative target and 4.30% lower than the production during the corresponding period of last year. Reasons for the shortfall are given below:

- ❖ RIL (KG-D6): Underperformance of MA wells.
- ❖ JV of BG, RIL & ONGC (M&S Tapti): Under performance of recently drilled 6 wells. Operator proposed for field abandonment.
- ❖ GSPC (KG-OSN-2001/3): Less than expected trial gas production from 3 wells.
- ❖ CBM: Extended dewatering in Raniganj South (GEECL), Delayed forest clearance in Raniganj East (Essar)

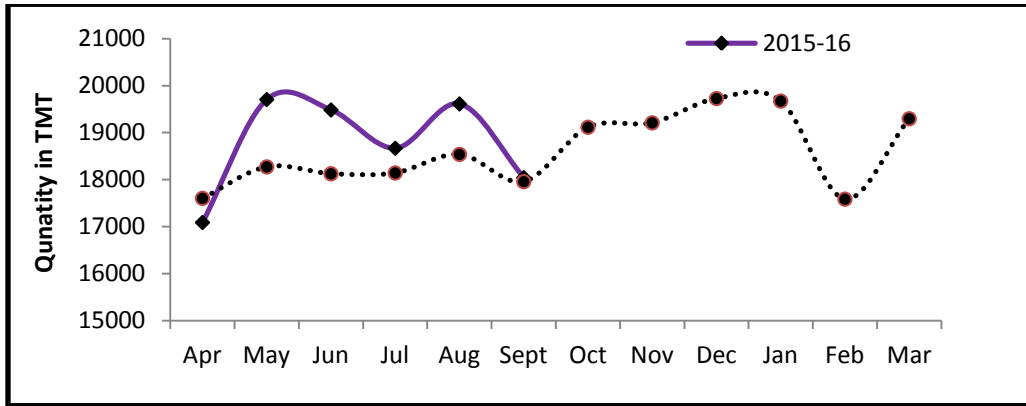
3. Refinery Production (in terms of Crude oil processed):

3.1 Refinery production during September, 2015 was 18042.961 TMT which is 0.45% lower than the target for the month and 0.48% higher than the production during corresponding period of last year. Cumulative refinery production during April-September, 2015 was 112600.594 TMT which is 2.31% higher than the target for the period and 3.65% higher than the production during corresponding period of last year. Unit-wise refinery production is given at annexure-III. Unit-wise refinery production for the month of September, 2015 and cumulatively for the period April-September, 2015 vis-à-vis same period of last year has been shown in table-3.1 and month-wise in figure-3.1.

Table 3.1: Refinery Production (TMT)

Oil Company	Target	September (Month)				April-September (Cumulative)			
	2015-16 (Apr-Mar)	2015-16		2014-15	% over last year	2015-16		2014-15	% over last year
		Target	Actual	Actual		Target	Actual	Actual	
IOCL	55000	4447	4375	4171	104.88	26634	27251	26273	103.72
BPCL	23197	1957	1899	1969	96.41	11773	12041	11435	105.30
HPCL	16200	1345	1499	1501	99.85	7711	7964	7764	102.58
CPCL	10800	918	731	851	85.94	5202	4880	5362	91.02
NRL	2700	235	248	228	108.48	1276	1166	1452	80.35
MRPL	15250	1000	976	1166	83.71	7150	7343	6712	109.40
ONGC	61	5	5	4	130.13	32	27	26	103.28
BORL	5200	270	620	570	108.62	2200	3045	2849	106.85
HMEL	9000	738	907	75	1203.82	4500	5484	2511	218.42
RIL	68042	5739	5829	5739	101.58	34072	33760	34072	99.08
EOL	18793	1471	954	1681	56.75	9508	9640	10181	94.69
TOTAL	224242	18125	18043	17957	100.48	110058	112601	108637	103.65

Figure 3.1: Monthly Refinery Production (TMT)



3.2 PSU Refineries' production during September, 2015 was 9733.127 TMT which is 1.76% lower than the target for the month and 1.60% lower than the production achieved in the corresponding month of last year. Cumulative refinery production of PSUs during April-September, 2015 was 60671.835 TMT which is 1.50% higher than the cumulative target and 2.79% higher than the production during the corresponding period of last year. Reasons for shortfalls in PSU refineries are given below:

- ❖ IOCL, Gujarat: Deferment of shutdown from Aug'15 to Sep'15.
- ❖ IOCL, Haldia: Deferment of shutdown from Jul-Aug'15 to Sep-Oct'15.
- ❖ IOCL, Guwahati: Lower Assam crude availability.
- ❖ BPCL, Mumbai: Shutdown of CCU & CCR units.
- ❖ CPCL, Manali: Production lowers mainly to contain VGO production on account of delayed startup of Hydrocracker Unit after shutdown.
- ❖ MRPL Mangalore: Production lowers due to Phase III Power Plant trip.

3.3 Production in JV refineries during September, 2015 was 1526.636 TMT which is 51.50% higher than the target for the month and 136.38% higher than the production achieved in the corresponding month of last year. Cumulative refinery production in JV refineries during April-September, 2015 was 8529.158 TMT which is 27.30% higher than the cumulative target and 59.11% higher than the production during the corresponding period of last year.

3.4 Production in private refineries during September, 2015 was 6783.198 TMT which is 5.92% lower than the target for the month and 8.58% lower than the production achieved in the corresponding month of last year. Cumulative refinery production in private refineries during April-September, 2015 was 43399.601 TMT which is 0.41% lower than the cumulative target and 1.93% lower than the production during the corresponding period of last year. Reasons for shortfalls in PSU refineries are given below:

- ❖ EOL, Vadinar: Refinery is under shutdown since 18th September 2015.

3.5 Refinery-wise details of the capacity utilization and Production of petroleum products during the month of September, 2015 and cumulatively for the period April-September, 2015 vis-à-vis April-September, 2014 are given in Annexures-IV to V respectively.
