

**Government of India**  
**Ministry of Petroleum and Natural Gas**  
**Economic & Statistics Division**

\*\*\*\*\*

New Delhi  
Dated the 20<sup>th</sup> April, 2021

**Monthly Production Report**  
**March, 2021**

**1. Production of Crude Oil**

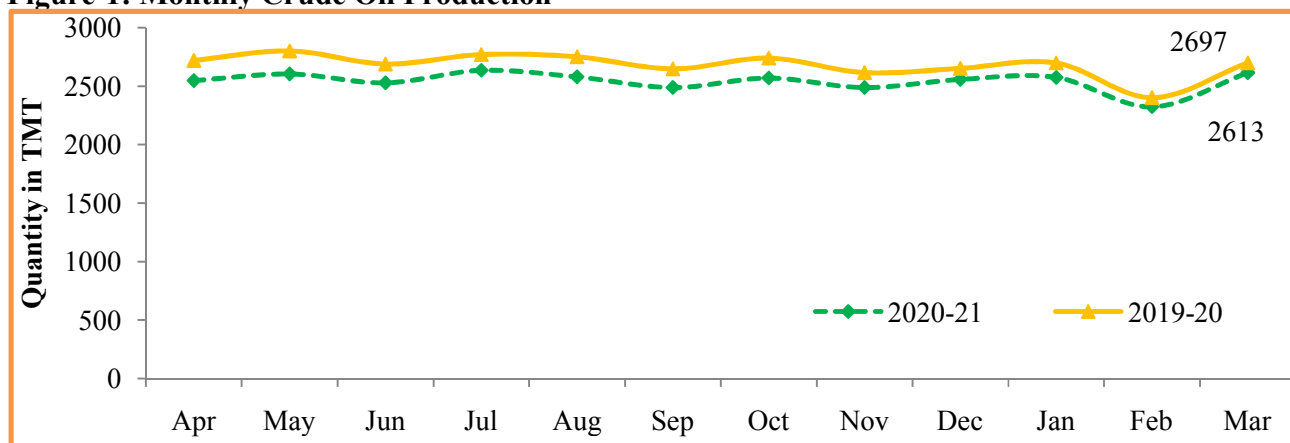
**Crude oil production<sup>1</sup>** during March, 2021 was 2612.96 TMT which is 5.63% lower than target and 3.13% lower when compared with March, 2020. Cumulative crude oil production during April-March, 2020-21 was 30491.77 TMT which is 5.65% and 5.22% lower than target for the period and production during corresponding period of last year respectively. Unit-wise and State-wise crude oil production is given at **Annexure-I**. Unit-wise crude oil production for the month of March, 2021 and cumulatively for the period April-March, 2020-21 vis-à-vis same period of last year has been shown in Table-1 and month-wise in Figure-1.

**Table-1: Crude Oil Production (in TMT)**

Oil Company	Target	March (Month)				April-March (Cumulative)			
	2020-21 (Apr-Mar)	2020-21		2019-20	% over last year	2020-21		2019-20	% over last year
		Target	Prod.*	Prod.		Target	Prod.*	Prod.	
ONGC	20931.68	1768.12	1713.08	1778.11	96.34	20931.68	20182.75	20626.95	97.85
OIL	3121.00	272.49	249.61	254.07	98.25	3121.00	2937.37	3106.61	94.55
PSC Fields	8265.00	728.15	650.26	665.28	97.74	8265.00	7371.65	8436.19	87.38
<b>Total</b>	<b>32317.68</b>	<b>2768.76</b>	<b>2612.96</b>	<b>2697.45</b>	<b>96.87</b>	<b>32317.68</b>	<b>30491.77</b>	<b>32169.76</b>	<b>94.78</b>

Note: Totals may not tally due to rounding off. \*: Provisional

**Figure-1: Monthly Crude Oil Production**



<sup>1</sup>Including condensate

Unit-wise production details with reasons for shortfall are as under:

**1.1** Crude oil production by **ONGC** (Oil and Natural Gas Corporation) in nomination block during March, 2021 was 1713.08 TMT which is 3.11% lower than target and 3.66% lower when compared with March 2020. Cumulative crude oil production by ONGC during April-March, 2020-21 was 20182.75 TMT which is 3.58% and 2.15% lower than target for the period and production during corresponding period of last year respectively. Reasons for shortfall in production are as under:

- Production planned from **WO16 cluster** from June'20 could not be realized due to delay in MOPU (Sagar Samrat) as activities at GPC yard Abu Dhabi got affected due to Covid restrictions/lockdown
- New wells planned under **Cluster 8** development project delayed due to delay in installation of new platforms due to COVID implications

**1.2** Crude oil production by **OIL** (Oil India Ltd) in the nomination block during March, 2021 was 249.61 TMT which is 8.40% lower than target and 1.75% lower when compared with March 2020. Cumulative crude oil production by OIL during April-March, 2020-21 was 2937.37 TMT which is 5.88% and 5.45% lower than target for the period and production during corresponding period of last year respectively. Reasons for shortfall in production are as under:

- Less than planned contribution from workover wells, drilling wells and old wells.
- Bandhs /blockade by local people and associations after the Baghjan Blowout.

**1.3** Crude oil production by **Pvt/JVs** companies in the PSC (Production Sharing Contract) regime during March, 2021 was 650.26 TMT which is 10.70% lower than target and 2.26% lower when compared with March 2020. Cumulative crude oil production by Pvt/JVs companies during April-March, 2021 was 7371.65 TMT which is 10.81% and 12.62% lower than target for the period and production during corresponding period of last year respectively. Reasons for shortfall in production are as under:

- RJ-ON-90/1 (Cairn Energy India Ltd): Delayed start up full field polymer injection in Bhagyam and Aishwarya field. Delay in hook-up of Stage-2 wells and NA-1 processing facility commissioning in advance stage in ABH. Flow cease in few wells of Satellite fields. Project schedule of Well and Surface Facility of Tukaram, Kaam-1 and GSV Condensate is impacted by COVID-19.
- B-80 (Hindustan Oil Exploration Company Ltd): Production from B80 field not commenced due to delay in completion of field development activities because of COVID.
- RAVVA (Cairn Energy India Ltd): Decline in production from producer wells.
- PY-3 (HARDY): Production could not be commenced in PY-3 field due to intra-JV issues.
- CB-ONN-2005/9 (MERCATOR): Block under PI transfer request and National Company Law Tribunal proceedings.

## 2. Production of Natural Gas

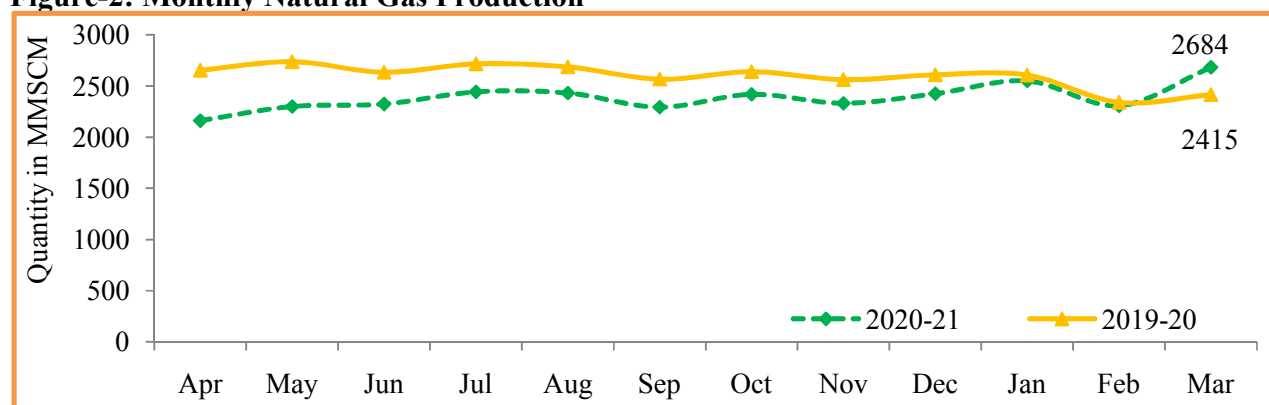
**Natural gas production** during March, 2021 was 2683.90 MMSCM which is 11.11% higher when compared with March, 2020 but 15.11% lower than the monthly target. Cumulative natural gas production during April-March, 2020-21 was 28670.60 MMSCM which is 14.60% and 8.06% lower than target for the period and production during corresponding period of last year respectively. Unit-wise and state-wise natural gas production is given at **Annexure-II**. Unit-wise natural gas production for the month of March, 2021 and cumulatively for the period April-March, 2020-21 vis-à-vis same period of last year has been shown in Table-2 and month-wise in Figure-2.

**Table-2: Natural Gas Production (in MMSCM)**

Oil Company	Target	March (Month)				April-March (Cumulative)			
	2020-21 (Apr-Mar)	2020-21		2019-20	% over last year	2020-21		2019-20	% over last year
		Target	Prod.*	Prod.		Target	Prod.*	Prod.	
ONGC	23982.98	2049.98	1831.74	1905.52	96.13	23982.98	21871.94	23746.19	92.11
OIL	2761.73	261.47	210.09	211.62	99.28	2761.73	2479.73	2668.25	92.93
PSC Fields	6826.82	850.27	642.07	298.29	215.25	6826.82	4318.93	4769.78	90.55
<b>Total</b>	<b>33571.53</b>	<b>3161.72</b>	<b>2683.90</b>	<b>2415.43</b>	<b>111.11</b>	<b>33571.53</b>	<b>28670.60</b>	<b>31184.22</b>	<b>91.94</b>

Note: Totals may not tally due to rounding off. \*: Provisional

**Figure-2: Monthly Natural Gas Production**



**2.1** Natural gas production by **ONGC** in the nomination blocks during March, 2021 was 1831.74 MMSCM which is 10.65% lower than target and 3.87% lower when compared with March 2020. Cumulative natural gas production by ONGC during April-March, 2020-21 was 21871.94 MMSCM which is 8.80% and 7.89% lower than target for the period and production during corresponding period of last year respectively. Reasons for shortfall in production are as under:

- Less Gas production from WO16 cluster due to delay in mobilization of MOPU (SagarSamrat)
- Less than planned production from Vasistha/S1 wells in EOA due certain reservoir related issues/high liquid.
- Less than envisaged production from Daman-Tapti Block.

- Less gas intake by Uran Plant due to maintenance job.

**2.2** Natural gas production by **OIL** in the nomination block during March, 2021 was 210.09 MMSCM which is 19.65% lower than monthly target and 0.72% lower than the March, 2020. Cumulative natural gas production by OIL during April-March, 2020-21 was 2479.73 MMSCM which is 10.21% and 7.07% lower than target for the period and production during corresponding period of last year respectively. Reasons for shortfall in production are as under:

- Low upliftment/demand of gas by the major customers.
- Bandhs /blockade by local people and associations after the Baghjan Blowout.

**2.3** Natural gas production by Pvt/JVs companies in the PSC (production sharing contracts) regime during March, 2021 was 642.07 MMSCM which is 115.25% higher than the March, 2020 due to new field D-34 (KG 98/3) started production in Dec-2020 with 1.3 MMSCMD, ramped up to 9.6 MMSCMD in March-2021 but total production by Pvt/JVs companies during March, 2021 is 24.49% lower than monthly target. Cumulative natural gas production by Pvt/JVs during April-March, 2020-21 was 4318.93 MMSCM which is 36.74% and 9.45% lower than target for the period and production during corresponding period of last year respectively. Reasons for shortfall in production are as under:

- KG-DWN-98/2 (Oil & Natural Gas Corpn.): U3-B well is flowing less than the expected profile and delay in commissioning of Wells of U1-field.
- KG-DWN-98/3 (Reliance Industries Ltd): As production commencement from R-Cluster (D34) field of KG-DWN-98/3 was delayed due to COVID from June 2020 to December 2020 which hampered the gradual ramp-up of Gas production.
- RJ-ON/6 (Focus Energy Limited): Reduced Gas offtake by buyer.
- Raniganj East (Essar Oil and Gas Exploration & Production Ltd): Production is lower due to less sales off-take.
- KG-OSN-2001/3 (Oil & Natural Gas Corpn.): Well D7 is planned to be safely abandoned.

### 3. Crude Oil Processed (Crude Throughput)

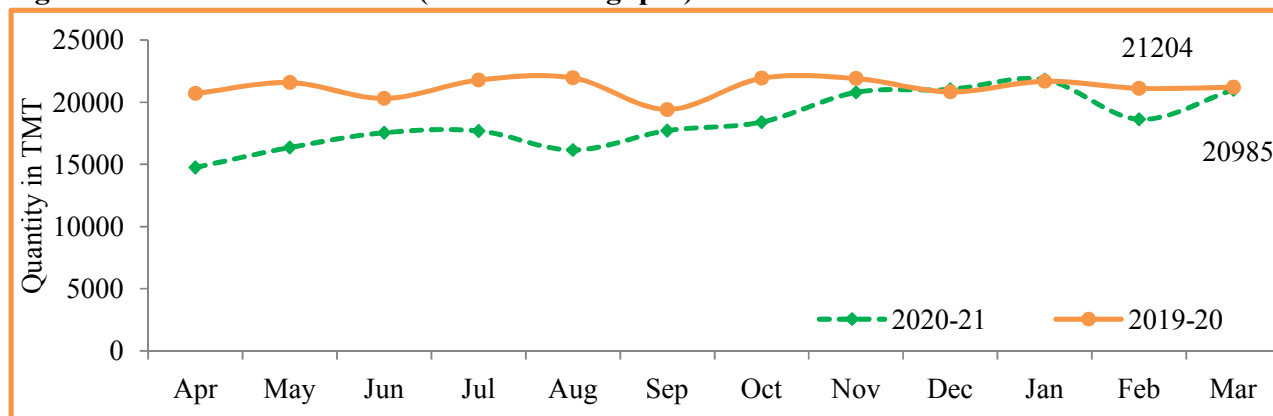
**Crude Oil Processed** during March, 2021 was 20985.28 TMT which is 2.90% lower than the target for the month and 1.03% lower than March, 2020. Cumulative crude throughput during April-March, 2020-21 was 221773.19 TMT which is 11.88% and 12.82% lower than target for the period and crude throughput during corresponding period of last year respectively. Refinery-wise details of the crude throughput and capacity utilization during the month of March, 2021 vis-à-vis March, 2020 are given at **Annexure-III and Annexure-IV**. Company-wise crude throughput for the month of March, 2021 and cumulatively for the period April-March, 2020-21 vis-à-vis same period of last year has been shown in Table-3 and month-wise in Figure-3.

**Table 3: Crude Oil Processed (Crude Throughput) (in TMT)**

Oil Company	Target	March (Month)				April-March (Cumulative)			
	2020-21 (Apr-Mar)	2020-21		2019-20	% over last year	2020-21		2019-20	% over last year
		Target	Prod.*	Prod.		Target	Prod.*	Prod.	
CPSE	147377.43	12940.56	12841.38	12261.68	104.73	147377.44	127503.48	144715.80	88.11
IOCL	72400.04	6553.62	5926.90	5736.13	103.33	72400.04	62350.64	69419.36	89.82
BPCL	33000.00	2851.00	2759.80	2706.52	101.97	33000.00	26222.38	31532.11	83.16
HPCL	16999.28	942.06	1581.12	1514.89	104.37	16999.28	16424.68	17180.32	95.60
CPCL	10290.00	920.00	963.54	853.19	112.93	10290.00	8242.89	10160.64	81.13
NRL	2549.86	218.27	240.90	247.65	97.28	2549.86	2707.35	2383.34	113.59
MRPL	12074.42	1450.00	1361.39	1196.68	113.76	12074.42	11474.55	13953.11	82.24
ONGC	63.83	5.61	7.72	6.63	116.39	63.83	80.99	86.93	93.17
<b>JVs</b>	<b>14772.00</b>	<b>1428.00</b>	<b>1627.18</b>	<b>1698.07</b>	<b>95.83</b>	<b>14772.00</b>	<b>16261.63</b>	<b>20154.97</b>	<b>80.68</b>
BORL	7800.00	660.00	602.13	733.21	82.12	7800.00	6189.63	7912.91	78.22
HMEL	6972.00	768.00	1025.05	964.86	106.24	6972.00	10072.00	12242.06	82.27
<b>Private</b>	<b>89515.16</b>	<b>7243.95</b>	<b>6516.72</b>	<b>7243.95</b>	<b>89.96</b>	<b>89515.16</b>	<b>78008.07</b>	<b>89515.16</b>	<b>87.15</b>
RIL	68894.99	5524.94	4889.94	5524.94	88.51	68894.99	60940.96	68894.99	88.45
NEL	20620.18	1719.01	1626.78	1719.01	94.63	20620.18	17067.11	20620.18	82.77
<b>TOTAL</b>	<b>251664.61</b>	<b>21612.51</b>	<b>20985.28</b>	<b>21203.70</b>	<b>98.97</b>	<b>251664.61</b>	<b>221773.19</b>	<b>254385.94</b>	<b>87.18</b>

Note: Totals may not tally due to rounding off. \*: Provisional

**Figure 3: Crude Oil Processed (Crude Throughput)**



**3.1 CPSE Refineries' crude oil processed** during March, 2021 was 12841.38 TMT which is 4.73% higher than the target for the month but 0.77% lower when compared with March, 2020. Cumulative crude throughput by CPSE refineries during April-March, 2020-21 was 127503.48 TMT which is 13.49% and 11.89% lower than target for the period and crude throughput during corresponding period of last year respectively. Reasons for shortfall in production are as under:

- IOCL-Barauni: Crude processed as per product upliftment
- IOCL-Gujarat: Atmospheric Vacuum Unit (AVU-3) maintenance and installation shutdown, High Gas Oils (SRGO/RCO) stock and delayed commissioning of new Diesel Hydrotreating (DHDT)

- IOCL-Haldia: Crude processing regulated due to Hydrogen Generation Unit (HGU-2) interruption.
- IOCL-Digboi: Crude processed lower due maintenance and installation shutdown.
- IOCL-Panipat: Crude processed lower in line with product upliftment and old DHDT shutdown for Packinox tube bundle replacement.
- IOCL-Bongaigaon: Crude processed as per crude availability.
- NRL-Numaligarhi: Crude processed as per crude availability.

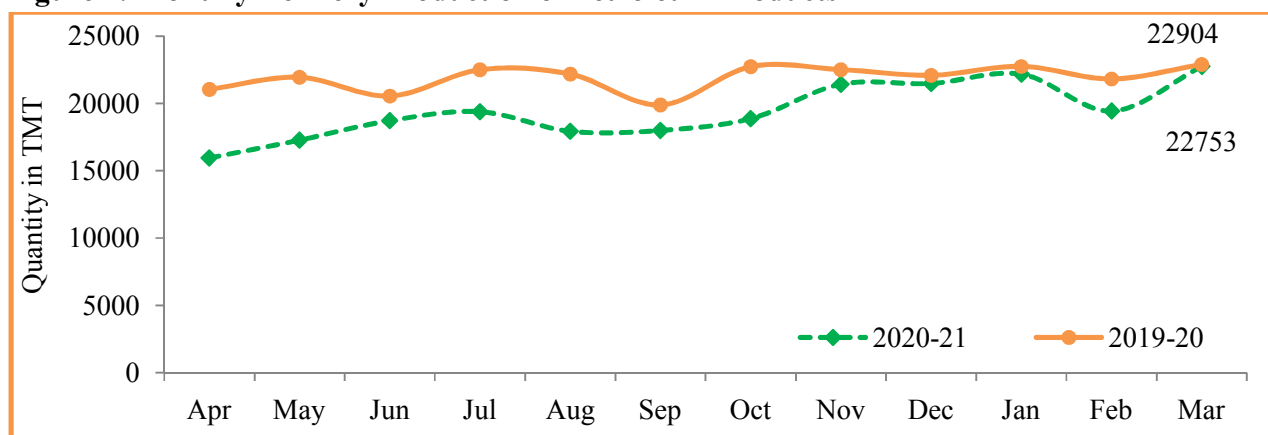
**3.2 JV refineries' crude oil processed** during March, 2021 was 1627.18 TMT which is 13.95% higher than the target for the month but 4.17% lower when compared with March, 2020. Cumulative crude throughput during April-March, 2020-21 was 16261.63 TMT which is 10.08% higher than target for the period but 19.32% lower when compare with the corresponding period of last year respectively.

**3.3 Private refineries' crude oil processed** during March, 2021 was 6516.72 TMT which is 10.04% lower than the corresponding month of last year. Cumulative crude throughput during April-March, 2020-21 was 78008.07 TMT which is 12.85% lower than the corresponding period of last year.

#### 4. Production of Petroleum Products

**Production of Petroleum Products** during March, 2021 was 22753.18 TMT which is marginally higher by 0.01% than the target for the month but 0.66% lower when compared with March, 2020. Cumulative production during April-March, 2020-21 was 233436.22 TMT which is 9.88% and 11.22% lower than target for the period and production during corresponding period of last year respectively. Unit-wise production of petroleum products is given at **Annexure-V**. Company-wise production for the month of March, 2021 and cumulatively for the period April-March, 2020-21 vis-à-Vis same period of last year has been shown in Table-4 and month-wise in Figure-4.

**Figure 4: Monthly Refinery Production of Petroleum Products**



**Table 4: Production of Petroleum Products (TMT)**

Oil Company	Target	March (Month)				April-March (Cumulative)			
	2020-21 (Apr-Mar)	2020-21		2019-20	% over last year	2020-21		2019-20	% over last year
		Target	Prod.*	Prod.		Target	Prod.*	Prod.	
<b>CPSE</b>	<b>138753.95</b>	<b>12154.07</b>	<b>12331.02</b>	<b>11951.00</b>	<b>103.18</b>	<b>138753.95</b>	<b>120927.70</b>	<b>137206.47</b>	<b>88.14</b>
IOCL	68760.50	6239.85	5741.84	5727.55	100.25	68760.50	59924.81	66668.28	89.89
BPCL	31319.00	2686.00	2742.32	2700.45	101.55	31319.00	25124.09	30240.10	83.08
HPCL	15914.53	869.12	1463.43	1368.70	106.92	15914.53	15360.45	15936.81	96.38
CPCL	9527.02	855.28	903.64	795.74	113.56	9527.02	7576.37	9329.77	81.21
NRL	2554.46	222.10	250.86	249.49	100.55	2554.46	2740.85	2299.89	119.17
MRPL	10618.44	1276.45	1221.86	1102.88	110.79	10618.44	10124.25	12651.47	80.02
ONGC	60.00	5.27	7.07	6.20	114.10	60.00	76.89	80.15	95.94
<b>JVs</b>	<b>13590.40</b>	<b>1318.48</b>	<b>1511.15</b>	<b>1611.07</b>	<b>93.80</b>	<b>13590.40</b>	<b>15073.37</b>	<b>18819.89</b>	<b>80.09</b>
BORL	6958.40	588.48	546.63	658.19	83.05	6958.40	5456.11	7218.74	75.58
HMEL	6632.00	730.00	964.51	952.88	101.22	6632.00	9617.26	11601.15	82.90
<b>Private</b>	<b>102154.50</b>	<b>8949.50</b>	<b>8553.43</b>	<b>8949.50</b>	<b>95.57</b>	<b>102154.50</b>	<b>93222.97</b>	<b>102154.50</b>	<b>91.26</b>
RIL	82374.12	7302.54	6980.51	7302.54	95.59	82374.12	76683.16	82374.12	93.09
NEL	19780.38	1646.96	1572.92	1646.96	95.50	19780.38	16539.81	19780.38	83.62
<b>Total Refinery</b>	<b>254498.86</b>	<b>22422.04</b>	<b>22395.60</b>	<b>22511.57</b>	<b>99.48</b>	<b>254498.85</b>	<b>229224.04</b>	<b>258180.85</b>	<b>88.78</b>
Fractionators	4523.28	329.33	357.59	392.74	91.05	4523.28	4212.18	4762.70	88.44
<b>TOTAL</b>	<b>259022.13</b>	<b>22751.37</b>	<b>22753.18</b>	<b>22904.31</b>	<b>99.34</b>	<b>259022.13</b>	<b>233436.22</b>	<b>262943.55</b>	<b>88.78</b>

Note: Totals may not tally due to rounding off. \*: Provisional

**4.1** Production of petroleum Products by **Oil's Refineries** during March, 2021 was 22395.60 TMT which is 0.12% lower than the target for the month and 0.52% lower when compared with March, 2020. Cumulative production of petroleum products by refineries during April-March, 2020-21 was 229224.04 TMT which is 9.93% and 11.22% lower than target for the period and production during corresponding period of last year respectively.

**4.2** Production of petroleum Products by **Fractionators** during March, 2021 was 357.59 TMT which is 8.58% higher than the target for the month but 8.95% lower when compared with March, 2020. Cumulative production by Fractionators during April-March, 2020-21 was 4212.18 TMT which is 6.88% and 11.56% lower than target for the period and production during corresponding period of last year respectively.

\*\*\*\*\*



## Crude Oil Production during the month of March, 2021 and cumulatively for the period April-March, 2020-21 vis-à-vis April-March, 2019-20

(Figures in Thousand Metric Tons)

Name of Undertaking/Unit/State	Target production during the month	Production during the			Cumulative Production			% variation over last year		% variation during the month under review over Target production
		Month under review *	Corresponding month of last year	Preceding month of current year **	(April-March)			During the month under review	Upto the end of the period	
(1)	(2)	(3)	(4)	(5)	(6)	(7)	(8)	(9)	(10)	(11)
<b>1. ONGC</b>	<b>1768.12</b>	<b>1713.08</b>	<b>1778.11</b>	<b>1544.84</b>	<b>20931.68</b>	<b>20182.75</b>	<b>20626.95</b>	<b>-3.66</b>	<b>-2.15</b>	<b>-3.11</b>
<b>Onshore</b>	<b>500.49</b>	<b>508.47</b>	<b>520.78</b>	<b>457.79</b>	<b>5907.31</b>	<b>5933.67</b>	<b>6090.41</b>	<b>-2.36</b>	<b>-2.57</b>	<b>1.59</b>
Andhra Pradesh	15.76	11.98	15.84	11.64	206.71	154.33	201.63	-24.39	-23.46	-23.98
Assam ^	83.66	84.10	86.08	76.01	965.66	964.08	987.49	-2.30	-2.37	0.53
Gujarat	381.64	384.85	391.42	344.14	4475.26	4484.46	4573.58	-1.68	-1.95	0.84
Tamil Nadu	19.44	27.55	27.44	26.00	259.69	330.80	327.71	0.39	0.94	41.73
<b>Offshore</b>	<b>1267.63</b>	<b>1204.61</b>	<b>1257.32</b>	<b>1087.05</b>	<b>15024.37</b>	<b>14249.08</b>	<b>14536.54</b>	<b>-4.19</b>	<b>-1.98</b>	<b>-4.97</b>
Eastern Offshore	1.23	1.02	1.18	0.91	14.71	12.66	19.42	-13.03	-34.77	-16.63
Western Offshore	1145.85	1121.74	1150.07	1010.32	13599.67	13134.77	13133.75	-2.46	0.01	-2.10
Condensates	120.55	81.85	106.07	75.82	1410.00	1101.65	1383.37	-22.84	-20.36	-32.11
<b>2. OIL (Onshore)</b>	<b>272.49</b>	<b>249.61</b>	<b>254.07</b>	<b>218.49</b>	<b>3121.00</b>	<b>2937.37</b>	<b>3106.61</b>	<b>-1.75</b>	<b>-5.45</b>	<b>-8.40</b>
Assam	269.37	246.91	250.92	216.21	3087.74	2904.75	3075.27	-1.60	-5.54	-8.34
Arunachal Pradesh	2.53	1.80	2.42	1.66	26.26	23.66	23.38	-25.57	1.21	-28.86
Rajsthan (heavy oil)	0.59	0.90	0.73	0.62	7.00	8.95	7.97	23.69	12.35	51.05
<b>3. Private / JVC</b>	<b>728.15</b>	<b>650.26</b>	<b>665.28</b>	<b>559.00</b>	<b>8265.00</b>	<b>7371.65</b>	<b>8436.19</b>	<b>-2.26</b>	<b>-12.62</b>	<b>-10.70</b>
<b>Onshore</b>	<b>601.18</b>	<b>559.42</b>	<b>559.63</b>	<b>487.48</b>	<b>7074.14</b>	<b>6232.21</b>	<b>6969.78</b>	<b>-0.04</b>	<b>-10.58</b>	<b>-6.95</b>
Andhra Pradesh	3.80	4.20	4.21	3.88	47.91	40.44	41.22	-0.29	-1.89	10.33
Arunachal Pradesh	2.46	2.50	2.49	2.34	28.98	29.77	32.25	0.32	-7.68	1.81
Assam	2.81	2.46	1.82	2.34	35.62	33.27	30.11	35.31	10.49	-12.63
Gujarat	26.20	20.06	10.97	15.52	223.61	166.89	133.80	82.83	24.73	-23.43
Rajasthan	558.53	523.53	532.92	457.40	6649.78	5882.41	6644.91	-1.76	-11.47	-6.27
Tamil Nadu	7.38	6.67	7.22	6.00	88.24	79.30	87.49	-7.59	-9.36	-9.57
West Bengal	0.00	0.01	0.01	0.01	0.00	0.13	0.00	-	-	-
<b>Offshore</b>	<b>126.97</b>	<b>90.84</b>	<b>105.65</b>	<b>71.52</b>	<b>1190.86</b>	<b>1139.44</b>	<b>1466.41</b>	<b>-14.02</b>	<b>-22.30</b>	<b>-28.46</b>
Eastern Offshore	78.80	56.11	70.60	44.24	753.40	728.68	537.80	-20.53	35.49	-28.80
Gujarat Offshore	27.46	34.73	35.05	27.28	356.65	410.75	590.78	-0.90	-30.47	26.47
Western Offshore	20.70	0.00	0.00	0.00	80.81	0.00	337.83	-	-	-
<b>GRAND TOTAL (1+2+3)</b>	<b>2768.76</b>	<b>2612.96</b>	<b>2697.45</b>	<b>2322.32</b>	<b>32317.68</b>	<b>30491.77</b>	<b>32169.76</b>	<b>-3.13</b>	<b>-5.22</b>	<b>-5.63</b>
Onshore	1374.17	1317.51	1334.48	1163.75	16102.44	15103.25	16166.81	-1.27	-6.58	-4.12
Offshore	1394.60	1295.45	1362.97	1158.57	16215.23	15388.52	16002.95	-4.95	-3.84	-7.11

Note: Totals may not tally due to rounding off figures. \*: Provisional. \*\*: Revised

Source: Oil Companies

Reasons for shortfall are indicated in the note.



## Natural Gas Production during the month of March, 2021 and cumulatively for the period April-March, 2020-21 vis-à-vis April-March, 2019-20

(Figures in Million Cubic Meters)

Name of Undertaking/Unit/State	Target production during the month	Production during the			Cumulative Production (April-March)			% variation over last year		% variation during the month under review over Target production
		Month under review *	Corresponding month of last year	Preceding month of current year **	Target production during current year	Actual production during current year *	Actual production during corresponding period of last year	During the month under review	Upto the end of the period	
<b>1. ONGC</b>	<b>2049.98</b>	<b>1831.74</b>	<b>1905.52</b>	<b>1630.20</b>	<b>23982.98</b>	<b>21871.94</b>	<b>23746.19</b>	<b>-3.87</b>	<b>-7.89</b>	<b>-10.65</b>
<b>Onshore</b>	<b>383.88</b>	<b>400.09</b>	<b>392.48</b>	<b>369.78</b>	<b>4631.38</b>	<b>4785.53</b>	<b>5170.17</b>	<b>1.94</b>	<b>-7.44</b>	<b>4.22</b>
Andhra Pradesh	77.34	69.34	72.60	62.84	865.44	814.34	897.41	-4.48	-9.26	-10.34
Assam	35.25	31.16	36.59	28.26	409.23	386.65	460.49	-14.84	-16.03	-11.60
Gujarat	79.47	92.23	102.16	82.56	982.32	1073.74	1273.61	-9.72	-15.69	16.05
Rajasthan	0.00	0.00	0.00	0.00	0.00	0.00	0.00	0.00	0.00	0.00
Tamil Nadu	75.53	78.04	85.76	59.84	936.98	876.95	1065.91	-9.00	-17.73	3.33
Tripura	116.29	129.32	95.37	136.27	1437.42	1633.84	1472.75	35.60	10.94	11.20
<b>Offshore</b>	<b>1666.10</b>	<b>1431.65</b>	<b>1513.04</b>	<b>1260.42</b>	<b>19351.59</b>	<b>17086.41</b>	<b>18576.02</b>	<b>-5.38</b>	<b>-8.02</b>	<b>-14.07</b>
Eastern Offshore	78.25	32.79	45.33	29.50	1006.44	426.47	931.10	-27.67	-54.20	-58.10
Western Offshore	1587.85	1398.86	1467.71	1230.92	18345.15	16659.94	17644.92	-4.69	-5.58	-11.90
<b>2. OIL</b>	<b>261.47</b>	<b>210.09</b>	<b>211.62</b>	<b>187.88</b>	<b>2761.73</b>	<b>2479.73</b>	<b>2668.25</b>	<b>-0.72</b>	<b>-7.07</b>	<b>-19.65</b>
Assam	237.68	186.18	185.58	165.09	2481.58	2241.29	2379.03	0.32	-5.79	-21.67
Arunachal Pradesh	3.41	4.48	4.55	4.21	40.15	50.41	38.22	-1.63	31.89	31.29
Rajasthan	20.38	19.43	21.48	18.58	240.00	188.03	251.00	-9.53	-25.09	-4.67
<b>3. Private / JVC</b>	<b>850.27</b>	<b>642.07</b>	<b>298.29</b>	<b>489.04</b>	<b>6826.82</b>	<b>4318.93</b>	<b>4769.78</b>	<b>115.25</b>	<b>-9.45</b>	<b>-24.49</b>
<b>Onshore</b>	<b>248.80</b>	<b>227.58</b>	<b>187.77</b>	<b>188.80</b>	<b>2605.06</b>	<b>2335.72</b>	<b>2054.97</b>	<b>21.20</b>	<b>13.66</b>	<b>-8.53</b>
Andhra Pradesh	2.33	1.36	1.54	1.23	23.73	13.13	14.91	-11.57	-11.96	-41.72
Arunachal Pradesh	0.13	0.42	0.45	0.38	1.50	4.95	7.37	-6.05	-32.83	227.34
Assam	33.36	26.35	19.65	26.30	392.75	367.43	301.71	34.10	21.78	-21.01
Gujarat	8.38	6.04	5.51	5.35	90.95	64.64	68.73	9.64	-5.95	-27.89
Rajasthan	192.01	190.87	157.76	153.20	2004.72	1851.61	1631.51	20.98	13.49	-0.59
Tamil Nadu	12.60	2.54	2.87	2.34	91.40	33.96	30.74	-11.37	10.47	-79.84
<b>CBM</b>	<b>98.56</b>	<b>57.13</b>	<b>58.36</b>	<b>51.57</b>	<b>949.90</b>	<b>642.39</b>	<b>655.44</b>	<b>-2.12</b>	<b>-1.99</b>	<b>-42.04</b>
Jharkhand (CBM)	6.06	0.27	0.20	0.20	38.69	1.67	4.65	30.88	-64.02	-95.59
Madhya Pradesh (CBM)	37.20	26.59	29.75	24.23	423.18	333.70	344.90	-10.63	-3.25	-28.52
West Bengal (CBM)	55.30	30.27	28.41	27.13	488.03	307.02	305.90	6.56	0.37	-45.26
<b>Offshore</b>	<b>502.91</b>	<b>357.37</b>	<b>52.16</b>	<b>248.68</b>	<b>3271.86</b>	<b>1340.82</b>	<b>2059.37</b>	<b>585.15</b>	<b>-34.89</b>	<b>-28.94</b>
Eastern Offshore	480.83	337.68	42.67	233.47	3107.54	1193.19	891.98	691.34	33.77	-29.77
Gujarat Offshore	10.14	19.69	9.49	15.21	119.75	147.63	128.70	107.53	14.71	94.16
Western Offshore	11.94	0.00	0.00	0.00	44.58	0.00	1038.69	-	-	-
<b>TOTAL (1+2+3)</b>	<b>3161.72</b>	<b>2683.90</b>	<b>2415.43</b>	<b>2307.12</b>	<b>33571.53</b>	<b>28670.60</b>	<b>31184.22</b>	<b>11.11</b>	<b>-8.06</b>	<b>-15.11</b>
CBM	98.56	57.13	58.36	51.57	949.90	642.39	655.44	-2.12	-1.99	-42.04
Onshore	894.16	837.76	791.87	746.45	9998.17	9600.98	9893.40	5.79	-2.96	-6.31
Offshore	2169.01	1789.02	1565.20	1509.10	22623.46	18427.23	20635.39	14.30	-10.70	-17.52

Note: Totals may not tally due to rounding off figures. \*: Provisional. \*\*: Revised

Source: Oil Companies

Reasons for shortfall are indicated in the note.

## Crude Oil Processed during the month of March, 2021 and cumulatively for the period April-March, 2020-21 vis-à-vis April-March, 2019-20

(Figures in Thousand Metric Tons)

Name of Undertaking/Unit	Target production during the month	Production during the			Cumulative Production			% variation		% variation during the month under review over Target production
		Month under review *	Corresponding month of last year	Preceding month of current year **	(April-March)			During the month under review	Upto the end of the period	
					Target production during current year**	Actual production during current year *	Actual production during corresponding period of last year			
(1)	(2)	(3)	(4)	(5)	(6)	(7)	(8)	(9)	(10)	(11)
<b>A. Public Sector</b>	<b>12940.56</b>	<b>12841.38</b>	<b>12261.68</b>	<b>11729.41</b>	<b>147377.44</b>	<b>127503.48</b>	<b>144715.80</b>	<b>4.73</b>	<b>-11.89</b>	<b>-0.77</b>
1. IOC, Guwahati	77.56	89.02	0.00	79.68	880.00	849.24	892.40	-	-4.84	14.77
2. IOC, Barauni	589.00	568.91	511.67	518.24	6420.00	5469.22	6515.53	11.19	-16.06	-3.41
3. IOC, Gujarat	1322.23	944.43	1166.96	912.28	14000.18	11603.05	13074.75	-19.07	-11.26	-28.57
4. IOC, Haldia	728.86	664.61	593.78	657.24	8300.00	6758.51	6463.29	11.93	4.57	-8.81
5. IOC, Mathura	852.50	853.40	783.20	790.36	9600.00	8925.80	8948.04	8.96	-0.25	0.11
6. IOC, Digboi	61.00	23.43	59.44	22.42	650.00	605.11	664.23	-60.57	-8.90	-61.58
7. IOC, Panipat	1394.99	1191.52	1215.58	1046.65	16049.86	13181.32	15038.10	-1.98	-12.35	-14.59
8. IOC, Bongaigaon	220.76	229.97	134.64	195.93	2600.00	2450.46	2044.82	70.80	19.84	4.17
9. IOC, Paradip	1306.73	1361.62	1270.85	1164.26	13900.00	12507.94	15778.20	7.14	-20.73	4.20
<b>Total IOC</b>	<b>6553.62</b>	<b>5926.90</b>	<b>5736.13</b>	<b>5387.06</b>	<b>72400.04</b>	<b>62350.64</b>	<b>69419.36</b>	<b>3.33</b>	<b>-10.18</b>	<b>-9.56</b>
10. BPCL, Mumbai	1363.00	1376.45	1338.12	1263.77	15750.00	12940.59	15016.68	2.86	-13.83	0.99
11. BPCL, Kochi	1488.00	1383.35	1368.40	1410.40	17250.00	13281.79	16515.43	1.09	-19.58	-7.03
<b>Total BPCL</b>	<b>2851.00</b>	<b>2759.80</b>	<b>2706.52</b>	<b>2674.16</b>	<b>33000.00</b>	<b>26222.38</b>	<b>31532.11</b>	<b>1.97</b>	<b>-16.84</b>	<b>-3.20</b>
12. HPCL, Mumbai	113.00	714.57	719.48	641.82	7549.55	7374.21	8065.28	-0.68	-8.57	532.36
13. HPCL, Visakh	829.06	866.56	795.41	737.10	9449.73	9050.47	9115.05	8.95	-0.71	4.52
<b>Total HPCL</b>	<b>942.06</b>	<b>1581.12</b>	<b>1514.89</b>	<b>1378.92</b>	<b>16999.28</b>	<b>16424.68</b>	<b>17180.32</b>	<b>4.37</b>	<b>-4.40</b>	<b>67.84</b>
14. CPCL, Manali	920.00	963.54	853.19	757.60	10290.00	8242.89	10160.64	12.93	-18.87	4.73
15. CPCL, CBR^	0.00	0.00	0.00	0.00	0.00	0.00	0.00	-	-	-
<b>Total CPCL</b>	<b>920.00</b>	<b>963.54</b>	<b>853.19</b>	<b>757.60</b>	<b>10290.00</b>	<b>8242.89</b>	<b>10160.64</b>	<b>12.93</b>	<b>-18.87</b>	<b>4.73</b>
16. NRL, Numaligarh	218.27	240.90	247.65	227.10	2549.86	2707.35	2383.34	-2.72	13.59	10.37
17. MRPL, Mangalore	1450.00	1361.39	1196.68	1297.36	12074.42	11474.55	13953.11	13.76	-17.76	-6.11
18. ONGC, Tatipaka	5.61	7.72	6.63	7.21	63.83	80.99	86.93	16.39	-6.83	37.72
<b>B. Joint Venture</b>	<b>1428.00</b>	<b>1627.18</b>	<b>1698.07</b>	<b>614.84</b>	<b>14772.00</b>	<b>16261.63</b>	<b>20154.97</b>	<b>-4.17</b>	<b>-19.32</b>	<b>13.95</b>
19. BORL, Bina	660.00	602.13	733.21	601.47	7800.00	6189.63	7912.91	-17.88	-21.78	-8.77
20. HMEL, GGSR, Bhatinda	768.00	1025.05	964.86	13.37	6972.00	10072.00	12242.06	6.24	-17.73	33.47
<b>C. Private Sector</b>	<b>7243.95</b>	<b>6516.72</b>	<b>7243.95</b>	<b>6273.16</b>	<b>89515.16</b>	<b>78008.07</b>	<b>89515.16</b>	<b>-10.04</b>	<b>-12.85</b>	<b>-10.04</b>
21. RIL, Jamnagar	3013.88	2839.03	3013.88	2664.36	33018.53	34099.68	33018.53	-5.80	3.27	-5.80
22. RIL, SEZ	2511.06	2050.92	2511.06	2212.01	35876.45	26841.28	35876.45	-18.32	-25.18	-18.32
<b>Total RIL</b>	<b>5524.94</b>	<b>4889.94</b>	<b>5524.94</b>	<b>4876.36</b>	<b>68894.99</b>	<b>60940.96</b>	<b>68894.99</b>	<b>-11.49</b>	<b>-11.55</b>	<b>-11.49</b>
23. NEL, Vadinar	1719.01	1626.78	1719.01	1396.79	20620.18	17067.11	20620.18	-5.37	-17.23	-5.37
<b>TOTAL(A+B+C)</b>	<b>21612.51</b>	<b>20985.28</b>	<b>21203.70</b>	<b>18617.41</b>	<b>251664.61</b>	<b>221773.19</b>	<b>254385.94</b>	<b>-1.03</b>	<b>-12.82</b>	<b>-2.90</b>

Note: Totals may not tally due to rounding off figures.

\*: Provisional. \*\*: Revised

Reasons for shortfall are indicated in the note.

^: CPCL CBR refinery is under shutdown due to limitation in meeting required Product specifications with the existing configuration.

Source: Oil Companies

## Refinery-wise Capacity Utilisation during the month of March, 2021 and cumulatively for the period April-March, 2020-21 vis-à-vis April-March, 2019-20

(Figures in Thousand Metric Tons)

Name of Undertaking/Unit	March, 2021			March, 2020			Cumulative (April - March)					
	Prorated Installed Capacity	Actual Crude T'put *	% Utilisation of Installed Capacity	Prorated Installed Capacity	Actual Crude T'put	% Utilisation of Installed Capacity	2020-21			2019-20		
							Prorated Installed Capacity	Actual Crude T'put *	% Utilisation of Installed Capacity	Prorated Installed Capacity	Actual Crude T'put	% Utilisation of Installed Capacity
(1)	(2)	(3)	(4)	(5)	(6)	(7)	(8)	(9)	(10)	(11)	(12)	(13)
<b>A. Public Sector</b>	<b>12108.00</b>	<b>12841.38</b>	<b>106.06</b>	<b>12033.00</b>	<b>12261.68</b>	<b>101.90</b>	<b>142566.00</b>	<b>127503.48</b>	<b>89.43</b>	<b>142066.00</b>	<b>144715.80</b>	<b>101.87</b>
1. IOC, Guwahati	85.00	89.02	104.73	85.00	0.00	0.00	1000.00	849.24	84.92	1000.00	892.40	89.24
2. IOC, Barauni	510.00	568.91	111.55	508.00	511.67	100.72	6000.00	5469.22	91.15	6000.00	6515.53	108.59
3. IOC, Gujarat	1164.00	944.43	81.14	1160.00	1166.96	100.60	13700.00	11603.05	84.69	13700.00	13074.75	95.44
4. IOC, Haldia	679.00	664.61	97.88	635.00	593.78	93.51	8000.00	6758.51	84.48	7500.00	6463.29	86.18
5. IOC, Mathura	679.00	853.40	125.68	678.00	783.20	115.52	8000.00	8925.80	111.57	8000.00	8948.04	111.85
6. IOC, Digboi	55.00	23.43	42.61	55.00	59.44	108.07	650.00	605.11	93.09	650.00	664.23	102.19
7. IOC, Panipat	1274.00	1191.52	93.53	1270.00	1215.58	95.71	15000.00	13181.32	87.88	15000.00	15038.10	100.25
8. IOC, Bongaigaon	200.00	229.97	114.98	199.00	134.64	67.66	2350.00	2450.46	104.27	2350.00	2044.82	87.01
9. IOC, Paradip	1274.00	1361.62	106.88	1270.00	1270.85	100.07	15000.00	12507.94	83.39	15000.00	15778.20	105.19
<b>Total IOC</b>	<b>5920.00</b>	<b>5926.90</b>	<b>100.12</b>	<b>5861.00</b>	<b>5736.13</b>	<b>97.87</b>	<b>69700.00</b>	<b>62350.64</b>	<b>89.46</b>	<b>69200.00</b>	<b>69419.36</b>	<b>100.32</b>
10. BPCL, Mumbai	1019.00	1376.45	135.08	1016.00	1338.12	131.70	12000.00	12940.59	107.84	12000.00	15016.68	125.14
11. BPCL, Kochi	1316.00	1383.35	105.12	1313.00	1368.40	104.22	15500.00	13281.79	85.69	15500.00	16515.43	106.55
<b>Total BPCL</b>	<b>2336.00</b>	<b>2759.80</b>	<b>118.14</b>	<b>2329.00</b>	<b>2706.52</b>	<b>116.21</b>	<b>27500.00</b>	<b>26222.38</b>	<b>95.35</b>	<b>27500.00</b>	<b>31532.11</b>	<b>114.66</b>
12. HPCL, Mumbai	637.00	714.57	112.18	635.00	719.48	113.30	7500.00	7374.21	98.32	7500.00	8065.28	107.54
13. HPCL, Visakh	705.00	866.56	122.92	703.00	795.41	113.14	8300.00	9050.47	109.04	8300.00	9115.05	109.82
<b>Total HPCL</b>	<b>1342.00</b>	<b>1581.12</b>	<b>117.82</b>	<b>1338.00</b>	<b>1514.89</b>	<b>113.22</b>	<b>15800.00</b>	<b>16424.68</b>	<b>103.95</b>	<b>15800.00</b>	<b>17180.32</b>	<b>108.74</b>
14. CPCL, Manali	892.00	963.54	108.02	889.00	853.19	95.97	10500.00	8242.89	78.50	10500.00	10160.64	96.77
15. CPCL, CBR^	85.00	0.00	0.00	85.00	0.00	0.00	1000.00	0.00	0.00	1000.00	0.00	0.00
<b>Total CPCL</b>	<b>977.00</b>	<b>963.54</b>	<b>98.62</b>	<b>974.00</b>	<b>853.19</b>	<b>87.60</b>	<b>11500.00</b>	<b>8242.89</b>	<b>71.68</b>	<b>11500.00</b>	<b>10160.64</b>	<b>88.35</b>
16. NRL, Numaligarh	255.00	240.90	94.47	254.00	247.65	97.50	3000.00	2707.35	90.25	3000.00	2383.34	79.44
17. MRPL, Mangalore	1274.00	1361.39	106.86	1270.00	1196.68	94.23	15000.00	11474.55	76.50	15000.00	13953.11	93.02
18. ONGC, Tatipaka	6.00	7.72	128.68	6.00	6.63	110.57	66.00	80.99	122.71	66.00	86.93	131.71
<b>B. Joint Venture</b>	<b>1622.00</b>	<b>1627.18</b>	<b>100.32</b>	<b>1618.00</b>	<b>1698.07</b>	<b>104.95</b>	<b>19100.00</b>	<b>16261.63</b>	<b>85.14</b>	<b>19100.00</b>	<b>20154.97</b>	<b>105.52</b>
19. BORL, Bina	662.00	602.13	90.96	661.00	733.21	110.92	7800.00	6189.63	79.35	7800.00	7912.91	101.45
20. HMEL, GGSR, Bhatinda	960.00	1025.05	106.78	957.00	964.86	100.82	11300.00	10072.00	89.13	11300.00	12242.06	108.34
<b>C. Private Sector</b>	<b>7491.00</b>	<b>6516.72</b>	<b>86.99</b>	<b>7470.00</b>	<b>7243.95</b>	<b>96.97</b>	<b>88200.00</b>	<b>78008.07</b>	<b>88.44</b>	<b>88200.00</b>	<b>89515.16</b>	<b>101.49</b>
21. RIL, Jamnagar	2803.00	2839.03	101.29	2795.00	3013.88	107.83	33000.00	34099.68	103.33	33000.00	33018.53	100.06
22. RIL, SEZ	2990.00	2050.92	68.59	2981.00	2511.06	84.24	35200.00	26841.28	76.25	35200.00	35876.45	101.92
<b>Total RIL</b>	<b>5792.00</b>	<b>4889.94</b>	<b>84.43</b>	<b>5777.00</b>	<b>5524.94</b>	<b>95.64</b>	<b>68200.00</b>	<b>60940.96</b>	<b>89.36</b>	<b>68200.00</b>	<b>68894.99</b>	<b>101.02</b>
23. NEL, Vadinar	1699.00	1626.78	95.75	1694.00	1719.01	101.48	20000.00	17067.11	85.34	20000.00	20620.18	103.10
<b>TOTAL(A+B+C)</b>	<b>21221.00</b>	<b>20985.28</b>	<b>98.89</b>	<b>21121.00</b>	<b>21203.70</b>	<b>100.39</b>	<b>249866.00</b>	<b>221773.19</b>	<b>88.76</b>	<b>249366.00</b>	<b>254385.94</b>	<b>102.01</b>

Note: Crude throughput in terms of crude oil processed.

\*: Provisional.

\*\*: Revised

Source: Oil Companies

## Production of Petroleum Products during the month of March, 2021 and cumulatively for the period April-March, 2020-21 vis-à-vis April-March, 2019-20

(Figures in Thousand Metric Tons)

Name of Undertaking/Unit	Target production during the month	Production during the			Cumulative Production			% variation over last year		% variation during the month under review over Target production
		Month under review *	Corresponding month of last year	Preceding month of current year **	(April-March)			During the month under review	Upto the end of the period	
					Target production during current year**	Actual production during current year*	Actual production during corresponding period of last year			
(1)	(2)	(3)	(4)	(5)	(6)	(7)	(8)	(9)	(10)	(11)
<b>A. Public Sector</b>	<b>12154.07</b>	<b>12331.02</b>	<b>11951.00</b>	<b>11115.64</b>	<b>138753.95</b>	<b>120927.70</b>	<b>137206.47</b>	<b>3.18</b>	<b>-11.86</b>	<b>1.46</b>
1. IOC, Guwahati	76.74	106.87	48.56	95.71	870.70	1008.05	1151.28	120.07	-12.44	39.25
2. IOC, Barauni	526.68	539.18	507.94	475.55	5810.00	5165.74	6072.72	6.15	-14.94	2.37
3. IOC, Gujarat	1264.18	884.53	1193.56	871.83	13386.66	11070.70	12591.92	-25.89	-12.08	-30.03
4. IOC, Haldia	670.98	607.51	557.06	602.72	7641.94	6205.53	5924.53	9.05	4.74	-9.46
5. IOC, Mathura	830.92	822.75	796.28	777.22	9357.00	8746.88	8793.31	3.32	-0.53	-0.98
6. IOC, Digboi	60.84	14.49	62.78	29.83	653.00	604.02	665.08	-76.92	-9.18	-76.18
7. IOC, Panipat	1408.52	1329.03	1289.76	1049.36	16228.00	13650.95	15366.15	3.04	-11.16	-5.64
8. IOC, Bongaigaon	216.91	207.94	117.81	181.61	2247.59	2314.16	1863.01	76.51	24.22	-4.13
9. IOC, Paradip	1184.10	1229.55	1153.79	1050.64	12565.60	11158.78	14240.26	6.57	-21.64	3.84
<b>Total IOC</b>	<b>6239.85</b>	<b>5741.84</b>	<b>5727.55</b>	<b>5134.48</b>	<b>68760.50</b>	<b>59924.81</b>	<b>66668.28</b>	<b>0.25</b>	<b>-10.11</b>	<b>-7.98</b>
10. BPCL, Mumbai	1311.00	1347.99	1300.43	1221.62	15153.00	12519.17	14513.90	3.66	-13.74	2.82
11. BPCL, Kochi	1375.00	1394.33	1400.02	1324.17	16166.00	12604.92	15726.19	-0.41	-19.85	1.41
<b>Total BPCL</b>	<b>2686.00</b>	<b>2742.32</b>	<b>2700.45</b>	<b>2545.79</b>	<b>31319.00</b>	<b>25124.09</b>	<b>30240.10</b>	<b>1.55</b>	<b>-16.92</b>	<b>2.10</b>
12. HPCL, Mumbai	102.26	689.51	652.95	602.20	7074.72	6952.38	7644.70	5.60	-9.06	574.26
13. HPCL, Visakh	766.86	773.92	715.75	714.49	8839.81	8408.06	8292.11	8.13	1.40	0.92
<b>Total HPCL</b>	<b>869.12</b>	<b>1463.43</b>	<b>1368.70</b>	<b>1316.68</b>	<b>15914.53</b>	<b>15360.45</b>	<b>15936.81</b>	<b>6.92</b>	<b>-3.62</b>	<b>68.38</b>
14. CPCL, Manali	855.28	903.64	795.74	717.04	9527.02	7576.37	9328.89	13.56	-18.79	5.65
15. CPCL, CBR	0.00	0.00	0.00	0.00	0.00	0.00	0.88	-	-	-
<b>Total CPCL</b>	<b>855.28</b>	<b>903.64</b>	<b>795.74</b>	<b>717.04</b>	<b>9527.02</b>	<b>7576.37</b>	<b>9329.77</b>	<b>13.56</b>	<b>-18.79</b>	<b>5.65</b>
16. NRL, Numaligarh	222.10	250.86	249.49	222.32	2554.46	2740.85	2299.89	0.55	19.17	12.95
17. MRPL, Mangalore	1276.45	1221.86	1102.88	1172.80	10618.44	10124.25	12651.47	10.79	-19.98	-4.28
18. ONGC, Tatipaka	5.27	7.07	6.20	6.53	60.00	76.89	80.15	14.10	-4.06	34.19
<b>B. Joint Venture</b>	<b>1318.48</b>	<b>1511.15</b>	<b>1611.07</b>	<b>560.11</b>	<b>13590.40</b>	<b>15073.37</b>	<b>18819.89</b>	<b>-6.20</b>	<b>-19.91</b>	<b>14.61</b>
19. BORL, Bina	588.48	546.63	658.19	541.06	6958.40	5456.11	7218.74	-16.95	-24.42	-7.11
20. HMEL, GGSR, Bhatinda	730.00	964.51	952.88	19.05	6632.00	9617.26	11601.15	1.22	-17.10	32.13
<b>C. Private Sector</b>	<b>8949.50</b>	<b>8553.43</b>	<b>8949.50</b>	<b>7459.64</b>	<b>102154.50</b>	<b>93222.97</b>	<b>102154.50</b>	<b>-4.43</b>	<b>-8.74</b>	<b>-4.43</b>
21. RIL, Jamnagar	3274.00	3063.70	3274.00	2726.91	35060.99	35771.24	35060.99	-6.42	2.03	-6.42
22. RIL, SEZ	4028.53	3916.81	4028.53	3373.15	47313.13	40911.92	47313.13	-2.77	-13.53	-2.77
<b>Total RIL</b>	<b>7302.54</b>	<b>6980.51</b>	<b>7302.54</b>	<b>6100.06</b>	<b>82374.12</b>	<b>76683.16</b>	<b>82374.12</b>	<b>-4.41</b>	<b>-6.91</b>	<b>-4.41</b>
23. NEL, Vadinar	1646.96	1572.92	1646.96	1359.58	19780.38	16539.81	19780.38	-4.50	-16.38	-4.50
<b>TOTAL REFINERY (A+B+C)</b>	<b>22422.04</b>	<b>22395.60</b>	<b>22511.57</b>	<b>19135.38</b>	<b>254498.85</b>	<b>229224.04</b>	<b>258180.85</b>	<b>-0.52</b>	<b>-11.22</b>	<b>-0.12</b>
ONGC	221.18	261.96	285.23	219.10	3298.92	3041.34	3467.81	-8.16	-12.30	18.44
GAIL	105.00	92.74	104.77	81.89	1191.36	1136.92	1265.90	-11.48	-10.19	-11.67
OIL	3.15	2.88	2.75	2.64	33.00	33.91	28.99	4.92	16.97	-8.54
<b>D. Total Fractionators</b>	<b>329.33</b>	<b>357.59</b>	<b>392.74</b>	<b>303.64</b>	<b>4523.28</b>	<b>4212.18</b>	<b>4762.70</b>	<b>-8.95</b>	<b>-11.56</b>	<b>8.58</b>
<b>Grand Total (A+B+C+D)</b>	<b>22751.37</b>	<b>22753.18</b>	<b>22904.31</b>	<b>19439.02</b>	<b>259022.13</b>	<b>233436.22</b>	<b>262943.55</b>	<b>-0.66</b>	<b>-11.22</b>	<b>0.01</b>

Note: Totals may not tally due to rounding off figures. \*: Provisional. \*\*: Revised

Source: Oil Companies

Reasons for shortfall are indicated in the note.