

**Government of India**  
**Ministry of Petroleum and Natural Gas**  
**Economic & Statistics Division**

\*\*\*\*\*

New Delhi  
Dated the 20<sup>th</sup> September, 2019

**Monthly Production Report**  
**August, 2019**

**Crude Oil**

1. **Crude oil production<sup>1</sup>** during August, 2019 was 2749.92 TMT which is 6.04% lower than target and 5.44% lower when compared with August 2018. Cumulative crude oil production during April-August, 2019 was 13725.52 TMT which is 4.01% and 6.06% lower than target for the period and production during corresponding period of last year respectively. Unit-wise and State-wise crude oil production is given at **Annexure-I**. Unit-wise crude oil production for the month of August, 2019 and cumulatively for the period April-August, 2019 vis-à-vis same period of last year has been shown in Table-1 and month-wise in Figure-1.

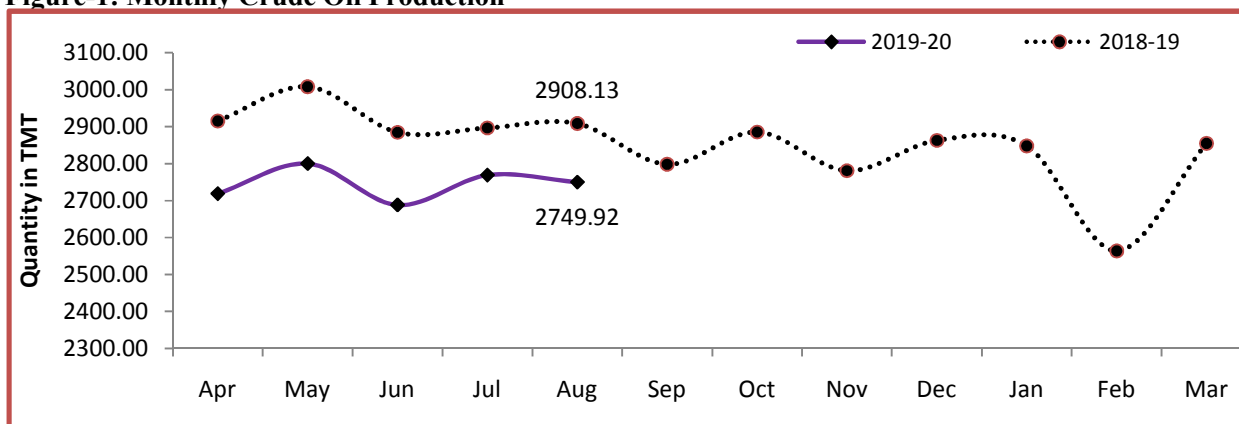
**Table-1: Crude Oil Production (in TMT)**

Oil Company	Target	August (Month)				April-August (Cumulative)			
	2019-20 (Apr-Mar)	2019-20		2018-19	% over last year	2019-20		2018-19	% over last year
		Target	Prod.*	Prod.		Target	Prod.*	Prod.	
ONGC	22153.90	1803.67	1716.89	1783.39	96.27	8760.07	8584.63	8964.83	95.76
OIL	3424.90	289.28	274.34	286.34	95.81	1415.66	1354.79	1411.41	95.99
PSC Fields	9463.34	833.84	758.68	838.40	90.49	4122.83	3786.10	4235.31	89.39
<b>Total</b>	<b>35042.15</b>	<b>2926.79</b>	<b>2749.92</b>	<b>2908.13</b>	<b>94.56</b>	<b>14298.56</b>	<b>13725.52</b>	<b>14611.56</b>	<b>93.94</b>

Note: Totals may not tally due to rounding off.

\*: Provisional

**Figure-1: Monthly Crude Oil Production**



<sup>1</sup>Including condensate

Unit-wise production details with reasons for shortfall are as under:

**1.1** Crude oil production by **ONGC** during August, 2019 was 1716.89 TMT which is 4.81% lower than the target and 3.73% lower when compared with August, 2018. Cumulative crude oil production by ONGC during April-August, 2019 was 8584.63 TMT which is 2.0% and 4.24% lower than target for the period and production during corresponding period of last year respectively. Reasons for shortfall in production are as under:

- ESP issues in wells of NBP field and Ratna R-series.
- Increase in water cut in certain wells of Heera, Neelam, Mumbai High and B173A fields.
- Sub-sea leakage in some well fluid lines of MH and NH Asset leading to flow restriction. NH Asset well fluid lines have been put back in operation after repair/replacement jobs. Repairing of well fluid lines of MH Asset is in progress.

**1.2** Crude oil production by **OIL** during August, 2019 was 274.34 TMT which is 5.16% lower than monthly target and 4.19% lower when compared with August, 2018. Cumulative crude oil production by OIL during April-August, 2019 was 1354.79 TMT which is 4.30% lower than target for the period and 4.01% lower than production during the corresponding period of last year. Major reasons for lower production is less than planned contribution from workover wells and drilling wells.

**1.3** Crude oil production by **Pvt/JVs** during August, 2019 was 758.68 TMT which is 9.01% lower than the monthly target and 9.51% lower than August, 2018. Cumulative crude oil production by Pvt/JVs during April-August, 2019 was 3786.10 TMT which is 8.17% lower than target for the period and 10.61% lower than the production during the corresponding period of last year. Reasons for shortfall in production are as under:

- RJ-ON-90/1 (CEIL): Deficit is from Mangla due to delay in on lining of 45 Fatehgarh-Mangla-1 & 4 infill wells, ESP failure, drilling & work over activities and water leakage.
- Operational issues in Bhagyam, Aishwarya and ABH fields.
- CB-ONN-2005/9 (Mercator): Oil production from Jyoti-1 is stopped. Well closed for long term pressure build up study and could not be put back in production due to non-grant of EC for development campaign.
- Jyoti-2 under WO from 31.03.19.

## Natural Gas

**2. Natural gas production** during August, 2019 was 2688.23 MMSCM which is 7.18% lower than the monthly target and 3.58% lower when compared with August, 2018. Cumulative natural gas production during April-August, 2019 was 13437.00 MMSCM which is 5.49% lower than target for the period and 0.98% lower than production during corresponding period of last year. Unit-wise and state-wise natural gas production is given at **Annexure-II**. Unit-wise natural gas production for the month of August, 2019 and

cumulatively for the period April-August, 2019 vis-à-vis same period of last year has been shown in Table-2 and month-wise in Figure-2.

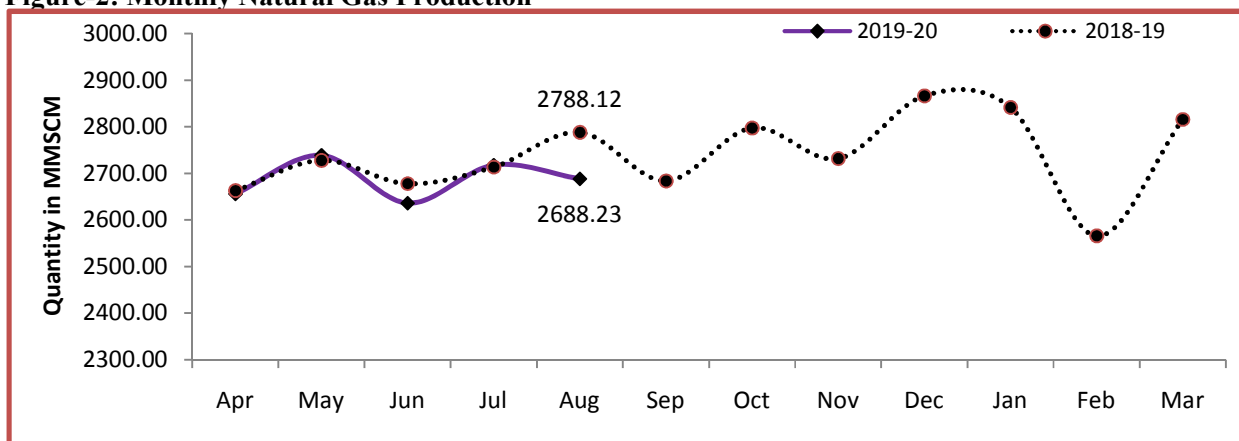
**Table-2: Natural Gas Production (MMSCM)**

Oil Company	Target	August (Month)				April-August (Cumulative)			
	2019-20 (Apr-Mar)	2019-20		2018-19	% over last year	2019-20		2018-19	% over last year
		Target	Prod.*	Prod.		Target	Prod.*	Prod.	
ONGC	25848.00	2124.66	2007.24	2060.68	97.41	10510.76	10158.29	10011.85	101.46
OIL	3309.59	288.16	236.93	236.97	99.98	1418.97	1152.66	1137.41	101.34
PSC Fields	5395.20	483.26	444.06	490.47	90.54	2287.57	2126.05	2421.20	87.81
<b>Total</b>	<b>34552.79</b>	<b>2896.07</b>	<b>2688.23</b>	<b>2788.12</b>	<b>96.42</b>	<b>14217.31</b>	<b>13437.00</b>	<b>13570.46</b>	<b>99.02</b>

Note: Totals may not tally due to rounding off.

\*: Provisional

**Figure-2: Monthly Natural Gas Production**



**2.1** Natural gas production by **ONGC** during August, 2019 was 2007.24 MMSCM which is 5.53% lower than target and 2.59% lower when compared with August 2018. Cumulative natural gas production by ONGC during April-August, 2019 was 10158.29 MMSCM which is 1.46% higher than the production during the corresponding period of the last year but 3.35% lower than the cumulative target. Reasons for shortfall in production are as under:

- Less gas production from Bassein and Satellite Asset due to de-optimization of certain wells.
- Less off take from VA-S1 field in Eastern Offshore due to outage of GPPC and subsequent less offtake by M/s GAIL since 25th Aug'2019.
- Less off take by consumers /Shut downs/ marketing issues.
- Pressure decline in Pasarlapudi, Kesavadasupalem&Mandapeta fields in Rajahmundry and in Kuthalam& Kali fields in Cauvery Asset.

**2.2** Natural gas production by **OIL** during August, 2019 was 236.93 MMSCM which is 17.78% lower than monthly target and marginally lower by 0.02% when compared with August, 2018. Cumulative natural gas production by OIL during April-August, 2019 was

1152.66 MMSCM which is 1.34% higher than the production during the corresponding period of last year but 18.77% lower than the cumulative target. Reasons for shortfall in production are as under:

- Loss of potential in Deohal area due to presence of CO<sub>2</sub> in production stream.
- Environmental loss (Bandh and miscreant activities).
- Namrup Plant-II shut down due to disruption in process line of synthesis gas boiler outlet.

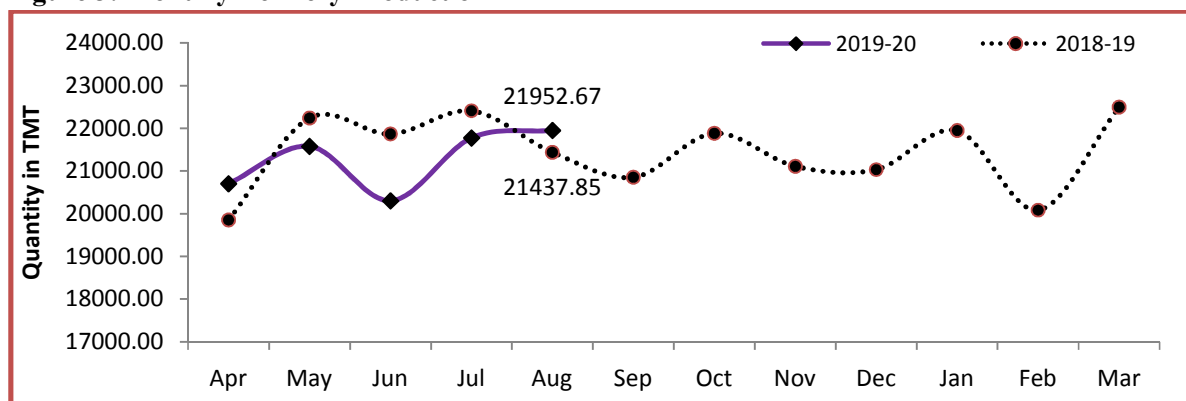
**2.3** Natural gas production by **Pvt/JVs** during August, 2019 was 444.06 MMSCM which is 8.11% lower than monthly target and 9.46% lower than August, 2018. Cumulative natural gas production by Pvt/JVs during April-August, 2019 was 2126.05 MMSCM which is 7.06% lower than the cumulative target and 12.19% lower than the production during the corresponding period of last year. Reasons for shortfall in production are as under:

- KG-DWN-98/3 (RIL): MA field ceased production and closure of 2 wells in D1D3 field.
- KG-OSN-2001/3 (ONGC): Delay in anticipated production from well DDW D-5.
- RJ-ON/6(FEL): Less offtake by customer.
- Raniganj East CBM Block (ESSAR): Major customer 'Matix' operational shutdown. Also restricted production to avoid flaring.

### 3. Refinery Production (in terms of crude oil processed)

**Refinery production** during August, 2019 was 21952.67 TMT which is 0.14% higher than the target for the month and 2.40% higher when compared with August, 2018. Cumulative production during April-August, 2019 was 106313.27 TMT which is 0.72% lower than the target for the period and 1.39% lower than the production during corresponding period of last year. Unit-wise production is given at **Annexure-III**. Company-wise production for the month of August, 2019 and cumulatively for the period April-August, 2019 vis-à-vis same period of last year has been shown in Table-3 and month-wise in Figure-3.

**Figure 3: Monthly Refinery Production**



**Table 3: Refinery Production (TMT)**

Oil Company	Target	August (Month)				April-August (Cumulative)			
	2019-20 (Apr-Mar)	2019-20		2018-19	% over last year	2019-20		2018-19	% over last year
		Target	Prod.*	Prod.		Target	Prod.*	Prod.	
<b>CPSE</b>	<b>147944.81</b>	<b>12539.84</b>	<b>12492.89</b>	<b>12456.45</b>	<b>100.29</b>	<b>61632.99</b>	<b>60440.27</b>	<b>62492.31</b>	96.72
IOCL	71900.25	6185.69	5959.36	5998.90	99.34	29985.91	29658.11	29776.70	99.60
BPCL	30900.00	2740.00	2746.77	2510.66	109.40	12640.00	12948.30	12898.99	100.38
HPCL	16499.00	1556.00	1563.13	1601.31	97.62	7581.00	7105.23	7720.99	92.02
CPCL	10400.00	780.00	898.16	954.19	94.13	4440.00	4445.33	4565.65	97.36
NRL	2799.80	259.10	243.13	271.49	89.56	1278.70	1183.41	1186.04	99.78
MRPL	15400.00	1015.00	1074.72	1115.38	96.35	5690.00	5063.27	6319.88	80.12
ONGC	45.76	4.06	7.62	4.52	168.62	17.39	36.62	24.07	152.13
<b>JVs</b>	<b>18755.00</b>	<b>1588.00</b>	<b>1655.07</b>	<b>1188.27</b>	<b>139.28</b>	<b>7841.00</b>	<b>8505.54</b>	<b>7706.03</b>	<b>110.38</b>
BORL	7800.00	660.00	670.33	153.96	435.40	3260.00	3246.69	2515.13	129.09
HMEL	10955.00	928.00	984.74	1034.31	95.21	4581.00	5258.85	5190.90	101.31
<b>Private</b>	<b>88040.52</b>	<b>7793.13</b>	<b>7804.71</b>	<b>7793.13</b>	<b>100.15</b>	<b>37608.13</b>	<b>37367.46</b>	<b>37608.13</b>	<b>99.36</b>
RIL	69145.00	6011.99	6022.14	6011.99	100.17	28796.42	28608.47	28796.42	99.35
EOL	18895.52	1781.15	1782.57	1781.15	100.08	8811.72	8759.00	8811.72	99.40
<b>TOTAL</b>	<b>254740.32</b>	<b>21920.98</b>	<b>21952.67</b>	<b>21437.85</b>	<b>102.40</b>	<b>107082.12</b>	<b>106313.27</b>	<b>107806.47</b>	<b>98.61</b>

Note: Totals may not tally due to rounding off.

\*: Provisional

**3.1 CPSE Refineries' production** during August, 2019 was 12492.89 TMT which is 0.37% lower than the target for the month but 0.29% higher when compared with August, 2018. Cumulative production by CPSE refineries during April-August, 2019 was 60440.27 TMT which is 1.94% lower than the target for the period and 3.28% lower than the production during corresponding period of last year. Reasons for shortfall of refinery production in some CPSE refineries are as under:

- IOCL, Gujarat: Lower due to AU-3 and AU-4 idled due to heavy rain and water logging , AU-5 idled due to high HSD stocks
- IOCL, Haldia: Lower due to interruption in processing due to power failure
- IOCL, Paradip: Lower due to high VR/VGO stocks.
- IOCL, Bongaigaon: Lower due to crude receipt
- IOCL, Panipat: Lower due to deferment of planned shutdown.
- HPCL, Visakh: Lower due to interruption in crude supplies on account of SPM non-availability due to hose leak.

**3.2 Production in JV refineries** during August, 2019 was 1655.07 TMT which is 4.22% higher than the target for the month and 39.28% higher when compared with August, 2018. Cumulative production by JVs refineries during April-August, 2019 was 8505.54 TMT which is 8.48% higher than the target for the period and 10.38% higher than the production during corresponding period of last year.

**3.3 Production in private refineries** during August, 2019 was 7804.71 TMT which is higher by 0.15% than the target both for the month and corresponding month of last year.

Cumulative production by private refineries during April-August, 2019 was 37367.46 TMT which is lower by 0.64% than the target and corresponding period of last year.

- 3.4** Refinery-wise details of the capacity utilization and production of petroleum products during the month of August, 2019 and cumulatively for the period April-August, 2019 vis-à-vis April-August, 2018 are given at **Annexures - IV and V** respectively.

\*\*\*\*\*

MINISTRY OF PETROLEUM & NATURAL GAS

Annexure-I (Para-1)

Crude Oil Production during the month of August, 2019 and cumulatively for the period April-August, 2019 vis-à-vis April-August, 2018

(Figures in Thousand Metric Tons)

Name of Undertaking/Unit/State	Planned production during the month	Production during the			Cumulative Production			% variation over last year		% variation during the month under review over planned production
		Month under review *	Corresponding month of last year	Preceding month of current year **	(April-August)			During the month under review	Upto the end of the period	
(1)	(2)	(3)	(4)	(5)	(6)	(7)	(8)	(9)	(10)	(11)
<b>1. ONGC</b>	<b>1803.67</b>	<b>1716.89</b>	<b>1783.39</b>	<b>1731.27</b>	<b>8760.07</b>	<b>8584.63</b>	<b>8964.83</b>	<b>-3.73</b>	<b>-4.24</b>	<b>-4.81</b>
<b>Onshore</b>	<b>512.30</b>	<b>508.55</b>	<b>517.70</b>	<b>511.68</b>	<b>2553.36</b>	<b>2546.14</b>	<b>2538.60</b>	<b>-1.77</b>	<b>0.30</b>	<b>-0.73</b>
Andhra Pradesh	21.67	16.86	27.06	17.48	108.72	89.29	120.46	-37.69	-25.87	-22.18
Assam ^	84.55	81.71	84.96	82.12	410.79	404.83	412.80	-3.83	-1.93	-3.36
Gujarat	382.17	382.23	379.97	385.85	1912.41	1919.22	1884.34	0.59	1.85	0.02
Tamil Nadu	23.91	27.75	25.71	26.24	121.43	132.81	121.00	7.93	9.76	16.06
<b>Offshore</b>	<b>1291.37</b>	<b>1208.34</b>	<b>1265.69</b>	<b>1219.59</b>	<b>6206.72</b>	<b>6038.48</b>	<b>6426.23</b>	<b>-4.53</b>	<b>-6.03</b>	<b>-6.43</b>
Eastern Offshore	1.57	1.93	1.58	1.72	7.74	8.61	6.07	22.20	41.98	22.71
Western Offshore	1157.54	1085.01	1137.84	1094.17	5567.99	5422.25	5794.63	-4.64	-6.43	-6.27
Condensates	132.26	121.40	126.27	123.70	630.99	607.62	625.54	-3.86	-2.87	-8.21
<b>2. OIL (Onshore)</b>	<b>289.28</b>	<b>274.34</b>	<b>286.34</b>	<b>273.82</b>	<b>1415.66</b>	<b>1354.79</b>	<b>1411.41</b>	<b>-4.19</b>	<b>-4.01</b>	<b>-5.16</b>
Assam	287.32	271.74	285.57	270.96	1406.68	1342.19	1407.53	-4.84	-4.64	-5.42
Arunachal Pradesh	1.77	1.93	0.62	2.20	8.06	9.54	2.94	211.61	224.20	9.15
Rajasthan (heavy oil)	0.19	0.67	0.15	0.66	0.92	3.06	0.94	336.22	225.60	259.02
<b>3. Private / JVC</b>	<b>833.84</b>	<b>758.68</b>	<b>838.40</b>	<b>763.86</b>	<b>4122.83</b>	<b>3786.10</b>	<b>4235.31</b>	<b>-9.51</b>	<b>-10.61</b>	<b>-9.01</b>
<b>Onshore</b>	<b>689.88</b>	<b>626.66</b>	<b>676.57</b>	<b>620.03</b>	<b>3387.30</b>	<b>3099.74</b>	<b>3450.06</b>	<b>-7.38</b>	<b>-10.15</b>	<b>-9.16</b>
Andhra Pradesh	8.41	4.07	1.40	4.02	32.52	11.61	5.10	190.85	127.67	-51.59
Arunachal Pradesh	2.66	2.79	2.90	2.76	13.29	13.86	15.30	-3.79	-9.41	5.04
Assam	4.03	3.27	3.02	3.32	18.58	14.02	11.88	8.36	17.99	-18.87
Gujarat	30.65	10.70	10.69	11.21	151.80	53.88	58.30	0.10	-7.58	-65.09
Rajasthan	635.92	598.26	650.38	591.26	3131.16	2969.04	3323.01	-8.01	-10.65	-5.92
Tamil Nadu	8.23	7.57	8.18	7.46	39.96	37.34	36.47	-7.40	2.38	-7.94
<b>Offshore</b>	<b>143.96</b>	<b>132.02</b>	<b>161.84</b>	<b>143.83</b>	<b>735.53</b>	<b>686.36</b>	<b>785.26</b>	<b>-18.42</b>	<b>-12.59</b>	<b>-8.29</b>
Eastern Offshore	41.32	38.92	52.30	42.66	222.53	214.58	275.53	-25.59	-22.12	-5.81
Gujarat Offshore	62.02	54.62	60.59	56.61	321.74	281.45	292.74	-9.85	-3.86	-11.93
Western Offshore	40.62	38.49	48.95	44.56	191.26	190.33	216.99	-21.37	-12.29	-5.25
<b>GRAND TOTAL (1+2+3)</b>	<b>2926.79</b>	<b>2749.92</b>	<b>2908.13</b>	<b>2768.95</b>	<b>14298.56</b>	<b>13725.52</b>	<b>14611.56</b>	<b>-5.44</b>	<b>-6.06</b>	<b>-6.04</b>
Onshore	1491.46	1409.55	1480.61	1405.53	7356.32	7000.67	7400.07	-4.80	-5.40	-5.49
Offshore	1435.33	1340.37	1427.53	1363.42	6942.25	6724.84	7211.49	-6.11	-6.75	-6.62

Note: Totals may not tally due to rounding off figures.

^: Includes crude oil production of Tripura

\*: Provisional. \*\*: Revised

Reasons for shortfall are indicated in the note.

MINISTRY OF PETROLEUM & NATURAL GAS

Annexure-II (Para-2)

Natural Gas Production during the month of August, 2019 and cumulatively for the period April-August, 2019 vis-à-vis April-August, 2018

(Figures in Million Cubic Meters)

Name of Undertaking/Unit/State	Planned production during the month	Production during the			Cumulative Production			% variation over last year		% variation during the month under review over planned production
		Month under review *	Corresponding month of last year	Preceding month of current year **	(April-August)			During the month under review	Upto the end of the period	
					Planned production during current year	Actual production during current year *	Actual production during corresponding period of last year			
<b>1. ONGC</b>	<b>2124.66</b>	<b>2007.24</b>	<b>2060.68</b>	<b>2023.37</b>	<b>10510.76</b>	<b>10158.29</b>	<b>10011.85</b>	<b>-2.59</b>	<b>1.46</b>	<b>-5.53</b>
<b>Onshore</b>	<b>513.61</b>	<b>445.85</b>	<b>467.09</b>	<b>439.99</b>	<b>2564.96</b>	<b>2257.55</b>	<b>2324.11</b>	<b>-4.55</b>	<b>-2.86</b>	<b>-13.19</b>
Andhra Pradesh	84.38	75.42	92.00	76.40	420.01	376.76	447.70	-18.02	-15.85	-10.62
Assam	47.81	40.59	41.83	40.35	230.37	195.78	204.45	-2.97	-4.24	-15.10
Gujarat	103.19	107.48	113.05	108.96	526.87	540.54	557.57	-4.92	-3.05	4.16
Rajasthan	5.39	0.00	0.76	0.00	26.62	0.00	3.52	-	-	-
Tamil Nadu	119.71	93.72	100.92	65.37	591.59	442.14	501.32	-7.14	-11.80	-21.72
Tripura	153.12	128.64	118.52	148.92	769.50	702.33	609.55	8.54	15.22	-15.99
<b>Offshore</b>	<b>1611.05</b>	<b>1561.39</b>	<b>1593.60</b>	<b>1583.38</b>	<b>7945.81</b>	<b>7900.74</b>	<b>7687.74</b>	<b>-2.02</b>	<b>2.77</b>	<b>-3.08</b>
Eastern Offshore	107.50	94.00	87.60	101.72	481.00	460.53	330.29	7.30	39.43	-12.56
Western Offshore	1503.55	1467.39	1505.99	1481.67	7464.80	7440.21	7357.45	-2.56	1.12	-2.40
<b>2. OIL</b>	<b>288.16</b>	<b>236.93</b>	<b>236.97</b>	<b>235.84</b>	<b>1418.97</b>	<b>1152.66</b>	<b>1137.41</b>	<b>-0.02</b>	<b>1.34</b>	<b>-17.78</b>
Assam	268.86	212.45	218.70	213.34	1323.74	1036.25	1042.58	-2.86	-0.61	-20.98
Arunachal Pradesh	1.09	3.72	1.05	2.32	5.36	10.84	4.80	253.20	125.72	242.76
Rajasthan	18.21	20.77	17.22	20.17	89.88	105.57	90.03	20.56	17.27	14.03
<b>3. Private / JVC</b>	<b>483.26</b>	<b>444.06</b>	<b>490.47</b>	<b>458.71</b>	<b>2287.57</b>	<b>2126.05</b>	<b>2421.20</b>	<b>-9.46</b>	<b>-12.19</b>	<b>-8.11</b>
<b>Onshore</b>	<b>177.48</b>	<b>183.96</b>	<b>146.52</b>	<b>174.85</b>	<b>815.36</b>	<b>786.26</b>	<b>710.79</b>	<b>25.55</b>	<b>10.62</b>	<b>3.65</b>
Andhra Pradesh	5.17	1.50	0.53	1.49	16.46	4.29	2.09	184.66	104.83	-70.92
Arunachal Pradesh	0.65	0.63	1.63	0.63	3.26	3.13	8.90	-61.19	-64.90	-3.07
Assam	34.68	33.30	28.72	33.78	168.18	139.86	114.52	15.93	22.13	-3.97
Gujarat	9.88	6.17	5.93	5.83	45.13	27.82	30.29	4.18	-8.18	-37.51
Rajasthan	124.15	139.80	107.34	130.62	567.92	599.04	546.33	30.24	9.65	12.61
Tamil Nadu	2.95	2.55	2.38	2.50	14.41	12.13	8.65	7.32	40.18	-13.61
<b>CBM</b>	<b>83.98</b>	<b>54.21</b>	<b>57.17</b>	<b>55.86</b>	<b>388.26</b>	<b>274.09</b>	<b>298.61</b>	<b>-5.18</b>	<b>-8.21</b>	<b>-35.45</b>
Jharkhand (CBM)	0.56	0.40	0.25	0.43	2.78	2.10	1.17	58.50	80.45	-28.90
Madhya Pradesh (CBM)	42.20	28.48	29.68	29.17	187.50	142.63	150.68	-4.05	-5.35	-32.51
West Bengal (CBM)	41.22	25.33	27.24	26.26	197.98	129.36	146.76	-7.01	-11.85	-38.55
<b>Offshore</b>	<b>221.80</b>	<b>205.89</b>	<b>286.77</b>	<b>227.99</b>	<b>1083.95</b>	<b>1065.70</b>	<b>1411.80</b>	<b>-28.20</b>	<b>-24.51</b>	<b>-7.17</b>
Eastern Offshore	98.03	83.06	145.18	84.58	494.18	419.10	752.44	-42.79	-44.30	-15.27
Gujarat Offshore	14.44	9.99	9.12	10.50	73.36	60.94	43.77	9.48	39.22	-30.84
Western Offshore	109.33	112.85	132.48	132.91	516.41	585.67	615.60	-14.82	-4.86	3.22
<b>TOTAL (1+2+3)</b>	<b>2896.07</b>	<b>2688.23</b>	<b>2788.12</b>	<b>2717.92</b>	<b>14217.31</b>	<b>13437.00</b>	<b>13570.46</b>	<b>-3.58</b>	<b>-0.98</b>	<b>-7.18</b>
CBM	83.98	54.21	57.17	55.86	388.26	274.09	298.61	-5.18	-8.21	-35.45
Onshore	979.25	866.75	850.58	850.68	4799.29	4196.47	4172.31	1.90	0.58	-11.49
Offshore	1832.85	1767.28	1880.37	1811.38	9029.76	8966.44	9099.54	-6.01	-1.46	-3.58

Note: Totals may not tally due to rounding off figures.

\*: Provisional. \*\*:Revised

CBM: Coal Bed Methane production.

Reasons for shortfall are indicated in the note.



MINISTRY OF PETROLEUM & NATURAL GAS

Annexure-III (Para-3)

Crude Oil Processed during the month of August, 2019 and cumulatively for the period April-August, 2019 vis-à-vis April-August, 2018

(Figures in Thousand Metric Tons)

Name of Undertaking/Unit	Planned production during the month	Production during the			Cumulative Production			% variation		% variation during the month under review over planned production
		Month under review *	Corresponding month of last year	Preceding month of current year **	(April-August)			During the month under review	Upto the end of the period	
					Planned production during current year**	Actual production during current year *	Actual production during corresponding period of last year			
(1)	(2)	(3)	(4)	(5)	(6)	(7)	(8)	(9)	(10)	(11)
<b>A. Public Sector</b>	<b>12539.84</b>	<b>12492.89</b>	<b>12456.45</b>	<b>13424.02</b>	<b>61632.99</b>	<b>60440.27</b>	<b>62492.31</b>	<b>0.29</b>	<b>-3.28</b>	<b>-0.37</b>
1. IOC, Guwahati	94.00	92.77	90.56	86.44	416.00	408.39	454.86	2.44	-10.22	-1.31
2. IOC, Barauni	448.51	461.79	524.10	581.49	2764.92	2764.19	2714.09	-11.89	1.85	2.96
3. IOC, Gujarat	1022.00	993.80	1004.80	1117.82	4492.89	4503.84	5585.09	-1.09	-19.36	-2.76
4. IOC, Haldia	706.80	599.92	646.08	708.03	3494.90	3383.79	3357.42	-7.14	0.79	-15.12
5. IOC, Mathura	837.00	858.56	755.66	899.14	4296.00	4364.79	4116.80	13.62	6.02	2.58
6. IOC, Digboi	48.00	50.10	51.71	59.92	278.00	265.62	280.57	-3.11	-5.33	4.38
7. IOC, Panipat	1380.20	1329.78	1383.25	1401.68	6625.20	6552.35	6851.28	-3.87	-4.36	-3.65
8. IOC, Bongaigaon	234.17	207.61	212.53	206.79	1102.70	1004.19	999.73	-2.32	0.45	-11.34
9. IOC, Paradip	1415.00	1365.03	1330.21	1354.65	6515.30	6410.95	5416.87	2.62	18.35	-3.53
<b>Total IOC</b>	<b>6185.69</b>	<b>5959.36</b>	<b>5998.90</b>	<b>6415.95</b>	<b>29985.91</b>	<b>29658.11</b>	<b>29776.70</b>	<b>-0.66</b>	<b>-0.40</b>	<b>-3.66</b>
10. BPCL, Mumbai	1340.00	1302.69	1051.14	1298.57	5660.00	5686.11	6053.67	23.93	-6.07	-2.78
11. BPCL, Kochi	1400.00	1444.09	1459.52	1462.64	6980.00	7262.19	6845.31	-1.06	6.09	3.15
<b>Total BPCL</b>	<b>2740.00</b>	<b>2746.77</b>	<b>2510.66</b>	<b>2761.21</b>	<b>12640.00</b>	<b>12948.30</b>	<b>12898.99</b>	<b>9.40</b>	<b>0.38</b>	<b>0.25</b>
12. HPCL, Mumbai	725.00	766.60	762.20	772.84	3480.00	3096.71	3632.59	0.58	-14.75	5.74
13. HPCL, Visakh	831.00	796.53	839.11	853.80	4101.00	4008.52	4088.39	-5.07	-1.95	-4.15
<b>Total HPCL</b>	<b>1556.00</b>	<b>1563.13</b>	<b>1601.31</b>	<b>1626.65</b>	<b>7581.00</b>	<b>7105.23</b>	<b>7720.99</b>	<b>-2.38</b>	<b>-7.98</b>	<b>0.46</b>
14. CPCL, Manali	780.00	898.16	954.19	925.24	4440.00	4445.33	4424.25	-5.87	0.48	15.15
15. CPCL, CBR	0.00	0.00	0.00	0.00	0.00	0.00	141.40	-	-	-
<b>Total CPCL</b>	<b>780.00</b>	<b>898.16</b>	<b>954.19</b>	<b>925.24</b>	<b>4440.00</b>	<b>4445.33</b>	<b>4565.65</b>	<b>-5.87</b>	<b>-2.64</b>	<b>15.15</b>
16. NRL, Numaligarh	259.10	243.13	271.49	259.06	1278.70	1183.41	1186.04	-10.44	-0.22	-6.16
17. MRPL, Mangalore	1015.00	1074.72	1115.38	1428.43	5690.00	5063.27	6319.88	-3.65	-19.88	5.88
18. ONGC, Tatipaka	4.06	7.62	4.52	7.49	17.39	36.62	24.07	68.62	52.13	87.87
<b>B. Joint Venture</b>	<b>1588.00</b>	<b>1655.07</b>	<b>1188.27</b>	<b>1609.70</b>	<b>7841.00</b>	<b>8505.54</b>	<b>7706.03</b>	<b>39.28</b>	<b>10.38</b>	<b>4.22</b>
19. BORL, Bina	660.00	670.33	153.96	523.39	3260.00	3246.69	2515.13	335.40	29.09	1.57
20. HMEL, GGSR, Bhatinda	928.00	984.74	1034.31	1086.30	4581.00	5258.85	5190.90	-4.79	1.31	6.11
<b>C. Private Sector</b>	<b>7793.13</b>	<b>7804.71</b>	<b>7793.13</b>	<b>6743.31</b>	<b>37608.13</b>	<b>37367.46</b>	<b>37608.13</b>	<b>0.15</b>	<b>-0.64</b>	<b>0.15</b>
21. RIL, Jamnagar	2792.86	2824.85	2792.86	1700.38	13799.42	12562.73	13799.42	1.15	-8.96	1.15
22. RIL, SEZ	3219.13	3197.29	3219.13	3259.99	14997.00	16045.74	14997.00	-0.68	6.99	-0.68
<b>Total RIL</b>	<b>6011.99</b>	<b>6022.14</b>	<b>6011.99</b>	<b>4960.37</b>	<b>28796.42</b>	<b>28608.47</b>	<b>28796.42</b>	<b>0.17</b>	<b>-0.65</b>	<b>0.17</b>
23. EOL, Vadinar	1781.15	1782.57	1781.15	1782.94	8811.72	8759.00	8811.72	0.08	-0.60	0.08
<b>TOTAL(A+B+C)</b>	<b>21920.98</b>	<b>21952.67</b>	<b>21437.85</b>	<b>21777.03</b>	<b>107082.12</b>	<b>106313.27</b>	<b>107806.47</b>	<b>2.40</b>	<b>-1.39</b>	<b>0.14</b>

Note: 1. Totals may not tally due to rounding off figures. \*: Provisional. \*\*: Revised

2. CPCL CBR crude distillation unit under shutdown from 01.04.2019 for project activities.

Reasons for shortfall are indicated in the note.

Refinery-wise Capacity Utilisation during the month of August, 2019 and cumulatively for the period April-August, 2019 vis-à-vis April-August, 2018

(Figures in Thousand Metric Tons)

Name of Undertaking/Unit	August, 2019			August, 2018			Cumulative (April - August)					
	Prorated Installed Capacity	Actual Crude T'put *	% Utilisation of Installed Capacity	Prorated Installed Capacity	Actual Crude T'put	% Utilisation of Installed Capacity	2019-20			2018-19		
							Prorated Installed Capacity	Actual Crude T'put *	% Utilisation of Installed Capacity	Prorated Installed Capacity	Actual Crude T'put	% Utilisation of Installed Capacity
(1)	(2)	(3)	(4)	(5)	(6)	(7)	(8)	(9)	(10)	(11)	(12)	(13)
<b>A. Public Sector</b>	<b>12066.00</b>	<b>12492.89</b>	<b>103.54</b>	<b>12066.00</b>	<b>12456.45</b>	<b>103.24</b>	<b>59388.00</b>	<b>60440.27</b>	<b>101.77</b>	<b>59551.00</b>	<b>62492.31</b>	<b>104.94</b>
1. IOC, Guwahati	85.00	92.77	109.14	85.00	90.56	106.55	418.00	408.39	97.70	419.00	454.86	108.56
2. IOC, Barauni	510.00	461.79	90.55	510.00	524.10	102.76	2508.00	2764.19	110.21	2515.00	2714.09	107.92
3. IOC, Gujarat	1164.00	993.80	85.38	1164.00	1004.80	86.32	5727.00	4503.84	78.64	5743.00	5585.09	97.25
4. IOC, Haldia	637.00	599.92	94.18	637.00	646.08	101.42	3135.00	3383.79	107.94	3144.00	3357.42	106.79
5. IOC, Mathura	679.00	858.56	126.44	679.00	755.66	111.29	3344.00	4364.79	130.53	3353.00	4116.80	122.78
6. IOC, Digboi	55.00	50.10	91.09	55.00	51.71	94.01	272.00	265.62	97.66	272.00	280.57	103.15
7. IOC, Panipat	1274.00	1329.78	104.38	1274.00	1383.25	108.58	6270.00	6552.35	104.50	6288.00	6851.28	108.96
8. IOC, Bongaigaon	200.00	207.61	103.80	200.00	212.53	106.27	982.00	1004.19	102.26	985.00	999.73	101.49
9. IOC, Paradip	1274.00	1365.03	107.14	1274.00	1330.21	0.00	6270.00	6410.95	102.25	6288.00	5416.87	0.00
<b>Total IOC</b>	<b>5877.00</b>	<b>5959.36</b>	<b>101.40</b>	<b>5877.00</b>	<b>5998.90</b>	<b>102.07</b>	<b>28928.00</b>	<b>29658.11</b>	<b>102.52</b>	<b>29007.00</b>	<b>29776.70</b>	<b>102.65</b>
10. BPCL, Mumbai	1019.00	1302.69	127.84	1019.00	1051.14	103.15	5016.00	5686.11	113.36	5030.00	6053.67	120.35
11. BPCL, Kochi	1316.00	1444.09	109.73	1316.00	1459.52	110.91	6480.00	7262.19	112.07	6497.00	6845.31	105.36
<b>Total BPCL</b>	<b>2336.00</b>	<b>2746.77</b>	<b>117.58</b>	<b>2336.00</b>	<b>2510.66</b>	<b>107.48</b>	<b>11496.00</b>	<b>12948.30</b>	<b>112.63</b>	<b>11527.00</b>	<b>12898.99</b>	<b>111.90</b>
12. HPCL, Mumbai	637.00	766.60	120.35	637.00	762.20	119.65	3135.00	3096.71	98.78	3144.00	3632.59	115.54
13. HPCL, Visakh	705.00	796.53	112.98	705.00	839.11	119.02	3470.00	4008.52	115.52	3479.00	4088.39	117.52
<b>Total HPCL</b>	<b>1342.00</b>	<b>1563.13</b>	<b>116.48</b>	<b>1342.00</b>	<b>1601.31</b>	<b>119.32</b>	<b>6605.00</b>	<b>7105.23</b>	<b>107.57</b>	<b>6623.00</b>	<b>7720.99</b>	<b>116.58</b>
14. CPCL, Manali	892.00	898.16	100.69	892.00	954.19	106.97	4389.00	4445.33	101.28	4401.00	4424.25	100.53
15. CPCL, CBR	85.00	0.00	0.00	85.00	0.00	0.00	418.00	0.00	0.00	419.00	141.40	33.75
<b>Total CPCL</b>	<b>977.00</b>	<b>898.16</b>	<b>91.93</b>	<b>977.00</b>	<b>954.19</b>	<b>97.66</b>	<b>4807.00</b>	<b>4445.33</b>	<b>92.48</b>	<b>4821.00</b>	<b>4565.65</b>	<b>94.70</b>
16. NRL, Numaligarh	255.00	243.13	95.35	255.00	271.49	106.46	1254.00	1183.41	94.37	1258.00	1186.04	94.28
17. MRPL, Mangalore	1274.00	1074.72	84.36	1274.00	1115.38	87.55	6270.00	5063.27	80.75	6288.00	6319.88	100.51
18. ONGC, Tatipaka	6.00	7.62	127.00	6.00	4.52	75.32	28.00	36.62	130.80	28.00	24.07	85.98
<b>B. Joint Venture</b>	<b>1622.00</b>	<b>1655.07</b>	<b>102.04</b>	<b>1469.00</b>	<b>1188.27</b>	<b>80.89</b>	<b>7984.00</b>	<b>8505.54</b>	<b>106.53</b>	<b>7252.00</b>	<b>7706.03</b>	<b>106.26</b>
19. BORL, Bina	662.00	670.33	101.26	510.00	153.96	30.19	3261.00	3246.69	99.56	2515.00	2515.13	100.01
20. HMEL, GGSR, Bhatinda	960.00	984.74	102.58	960.00	1034.31	107.74	4724.00	5258.85	111.32	4737.00	5190.90	109.58
<b>C. Private Sector</b>	<b>7491.00</b>	<b>7804.71</b>	<b>104.19</b>	<b>7491.00</b>	<b>7793.13</b>	<b>104.03</b>	<b>36870.00</b>	<b>37367.46</b>	<b>101.35</b>	<b>36972.00</b>	<b>37608.13</b>	<b>101.72</b>
21. RIL, Jamnagar	2803.00	2824.85	100.78	2803.00	2792.86	99.64	13795.00	12562.73	91.07	13833.00	13799.42	99.76
22. RIL, SEZ	2990.00	3197.29	106.93	2990.00	3219.13	107.66	14715.00	16045.74	109.04	14755.00	14997.00	101.64
<b>Total RIL</b>	<b>5792.00</b>	<b>6022.14</b>	<b>103.97</b>	<b>5792.00</b>	<b>6011.99</b>	<b>103.80</b>	<b>28510.00</b>	<b>28608.47</b>	<b>100.35</b>	<b>28588.00</b>	<b>28796.42</b>	<b>100.73</b>
23. EOL, Vadinar	1699.00	1782.57	104.92	1699.00	1781.15	104.84	8361.00	8759.00	104.76	8384.00	8811.72	105.10
<b>TOTAL(A+B+C)</b>	<b>21179.00</b>	<b>21952.67</b>	<b>103.65</b>	<b>21026.00</b>	<b>21437.85</b>	<b>101.96</b>	<b>104243.00</b>	<b>106313.27</b>	<b>101.99</b>	<b>103774.00</b>	<b>107806.47</b>	<b>103.89</b>

Note: Crude throughput in terms of crude oil processed. \*: Provisional. \*\*: Revised

MINISTRY OF PETROLEUM & NATURAL GAS

Annexure-V (Para 3.4)

Production of Petroleum Products during the month of August, 2019 and cumulatively for the period April-August, 2019 vis-à-vis April-August, 2018

(Figures in Thousand Metric Tons)

Name of Undertaking/Unit	Planned production during the month	Production during the			Cumulative Production (April-August)			% variation over last year		% variation during the month under review over planned production
		Month under review *	Corresponding month of last year	Preceding month of current year **	Planned production during current year**	Actual production during current year*	Actual production during corresponding period of last year	During the month under review	Upto the end of the period	
(1)	(2)	(3)	(4)	(5)	(6)	(7)	(8)	(9)	(10)	(11)
<b>A. Public Sector</b>	<b>11800.19</b>	<b>11754.04</b>	<b>11782.07</b>	<b>12703.62</b>	<b>58056.89</b>	<b>56842.16</b>	<b>58954.98</b>	<b>-0.24</b>	<b>-3.58</b>	<b>-0.39</b>
1. IOC, Guwahati	95.83	98.95	103.30	105.80	427.68	503.34	505.49	-4.21	-0.42	3.26
2. IOC, Barauni	353.88	340.82	457.17	532.96	2493.11	2456.79	2540.10	-25.45	-3.28	-3.69
3. IOC, Gujarat	994.70	929.23	946.41	1108.62	4225.34	4152.69	5256.35	-1.82	-21.00	-6.58
4. IOC, Haldia	635.58	528.39	599.76	662.33	3228.20	3097.75	3167.23	-11.90	-2.19	-16.86
5. IOC, Mathura	822.20	846.16	757.30	858.58	4171.22	4242.55	4034.26	11.73	5.16	2.91
6. IOC, Digboi	48.04	38.96	50.61	62.63	333.30	256.85	280.89	-23.02	-8.56	-18.90
7. IOC, Panipat	1416.45	1327.13	1397.73	1402.50	6742.77	6629.91	6938.98	-5.05	-4.45	-6.31
8. IOC, Bongaigaon	212.98	206.01	196.09	195.27	1022.08	982.52	918.94	5.06	6.92	3.27
9. IOC, Paradip	1290.24	1261.87	1209.34	1185.32	5942.01	5768.52	4841.88	4.34	19.14	-2.20
<b>Total IOC</b>	<b>5869.90</b>	<b>5577.52</b>	<b>5717.70</b>	<b>6114.01</b>	<b>28585.70</b>	<b>28090.92</b>	<b>28484.13</b>	<b>-2.45</b>	<b>-1.38</b>	<b>-4.98</b>
10. BPCL, Mumbai	1284.00	1247.92	995.37	1196.55	5424.00	5400.13	5807.91	25.37	-7.02	-2.81
11. BPCL, Kochi	1306.34	1315.14	1364.99	1396.80	6520.32	6769.82	6357.46	-3.65	6.49	0.67
<b>Total BPCL</b>	<b>2590.34</b>	<b>2563.06</b>	<b>2360.37</b>	<b>2593.35</b>	<b>11944.32</b>	<b>12169.94</b>	<b>12165.37</b>	<b>8.59</b>	<b>0.04</b>	<b>-1.05</b>
12. HPCL, Mumbai	683.00	748.11	736.35	737.63	3276.00	2964.42	3426.35	1.60	-13.48	9.53
13. HPCL, Visakh	768.00	748.03	791.93	815.93	3792.00	3686.60	3824.68	-5.54	-3.61	-2.60
<b>Total HPCL</b>	<b>1451.00</b>	<b>1496.14</b>	<b>1528.28</b>	<b>1553.55</b>	<b>7068.00</b>	<b>6651.01</b>	<b>7251.03</b>	<b>-2.10</b>	<b>-8.27</b>	<b>3.11</b>
14. CPCL, Manali	700.22	818.63	871.78	876.22	4003.90	4083.84	3981.42	-6.10	2.57	16.91
15. CPCL, CBR	0.00	0.00	0.82	0.00	0.00	0.88	142.50	-	-	-
<b>Total CPCL</b>	<b>700.22</b>	<b>818.63</b>	<b>872.60</b>	<b>876.22</b>	<b>4003.90</b>	<b>4084.72</b>	<b>4123.91</b>	<b>-6.18</b>	<b>-0.95</b>	<b>16.91</b>
16. NRL, Numaligarh	253.83	232.36	272.49	250.12	1252.89	1137.50	1163.99	-14.73	-2.28	-8.46
17. MRPL, Mangalore	931.00	1059.09	1026.36	1309.31	5185.36	4673.88	5743.57	3.19	-18.62	13.76
18. ONGC, Tatipaka	3.90	7.24	4.28	7.07	16.72	34.19	22.99	69.14	48.72	85.67
<b>B. Joint Venture</b>	<b>1458.18</b>	<b>1476.80</b>	<b>1156.59</b>	<b>1505.39</b>	<b>7204.98</b>	<b>7871.80</b>	<b>7209.93</b>	<b>27.69</b>	<b>9.18</b>	<b>1.28</b>
19. BORL, Bina	587.18	605.34	161.23	471.59	2901.98	2943.43	2312.65	275.44	27.28	3.09
20. HMEL, GGSR, Bhatinda	871.00	871.46	995.36	1033.80	4303.00	4928.37	4897.28	-12.45	0.63	0.05
<b>C. Private Sector</b>	<b>8258.66</b>	<b>8564.91</b>	<b>8258.66</b>	<b>7867.56</b>	<b>41280.39</b>	<b>41498.01</b>	<b>41280.39</b>	<b>3.71</b>	<b>0.53</b>	<b>3.71</b>
21. RIL, Jamnagar	2851.44	3066.43	2851.44	1981.49	14384.42	13455.12	14384.42	7.54	-6.46	7.54
22. RIL, SEZ	3698.62	3850.50	3698.62	4118.46	18387.00	19670.37	18387.00	4.11	6.98	4.11
<b>Total RIL</b>	<b>6550.06</b>	<b>6916.93</b>	<b>6550.06</b>	<b>6099.95</b>	<b>32771.42</b>	<b>33125.50</b>	<b>32771.42</b>	<b>5.60</b>	<b>1.08</b>	<b>5.60</b>
23. EOL, Vadinar	1708.60	1647.98	1708.60	1767.62	8508.97	8372.52	8508.97	-3.55	-1.60	-3.55
<b>TOTAL REFINERY (A+B+C)</b>	<b>21517.03</b>	<b>21795.75</b>	<b>21197.32</b>	<b>22076.58</b>	<b>106542.26</b>	<b>106211.97</b>	<b>107445.30</b>	<b>2.82</b>	<b>-1.15</b>	<b>1.30</b>
ONGC	283.09	276.21	309.46	320.64	1383.07	1494.29	1461.74	-10.75	2.23	-2.43
OIL	102.93	111.28	120.03	103.67	506.69	512.70	536.65	-7.29	-4.46	8.11
GAIL	2.60	1.41	2.95	2.90	14.90	13.60	13.98	-52.12	-2.69	-45.77
<b>D. Total Fractionators</b>	<b>388.63</b>	<b>388.89</b>	<b>432.43</b>	<b>427.22</b>	<b>1904.66</b>	<b>2020.59</b>	<b>2012.36</b>	<b>-10.07</b>	<b>0.41</b>	<b>0.07</b>
<b>Grand Total (A+B+C+D)</b>	<b>21905.66</b>	<b>22184.64</b>	<b>21629.75</b>	<b>22503.79</b>	<b>108446.92</b>	<b>108232.56</b>	<b>109457.67</b>	<b>2.57</b>	<b>-1.12</b>	<b>1.27</b>

Note: Totals may not tally due to rounding off figures. \*: Provisional. \*\*: Revised