

Government of India
Ministry of Petroleum and Natural Gas
Economic & Statistics Division

New Delhi
Dated the 21st January, 2019

Monthly Production Report
December, 2018

1. Crude Oil

Crude oil production¹ during December, 2018 was 2862.35 TMT which is 10.13% lower than target and 4.3% lower when compared with December, 2017. Cumulative crude oil production during April-December, 2018 was 25937.54 TMT which is 5.83% lower than target for the period and 3.7% lower than production during corresponding period of last year. Unit-wise and State-wise crude oil production is given at **Annexure-I**. Unit-wise crude oil production for the month of December, 2018 and cumulatively for the period April-December, 2018 vis-à-vis same period of last year has been shown in Table-1 and month-wise in Figure-1.

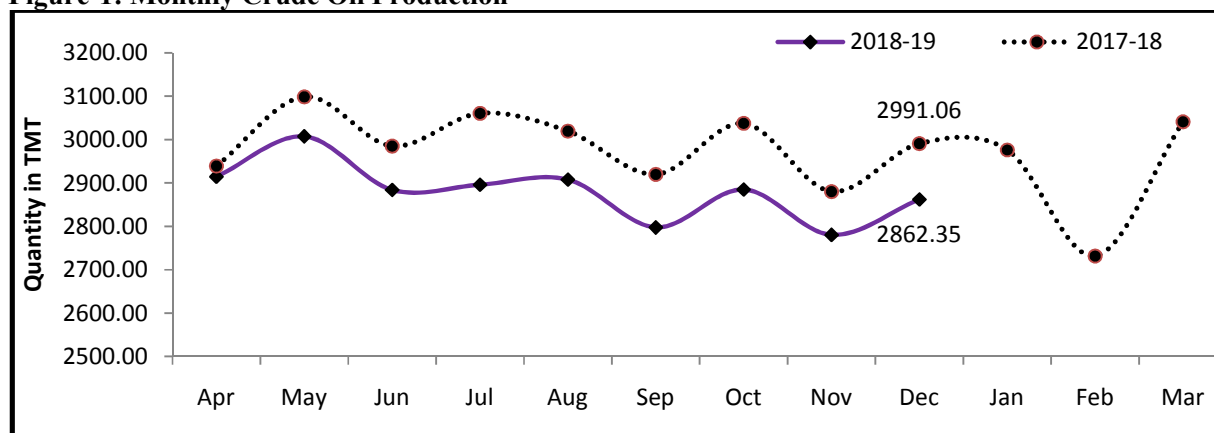
Table-1: Crude Oil Production (in TMT)

Oil Company	Target	December (Month)				April-December (Cumulative)			
	2018-19 (Apr-Mar)	2018-19		2017-18	% over last year	2018-19		2017-18	% over last year
		Target	Prod.*	Prod.		Target	Prod.*	Prod.	
ONGC	23040.00	1998.02	1761.22	1862.08	94.58	17092.31	15908.11	16848.70	94.42
OIL	3738.00	329.10	274.96	288.38	95.34	2760.25	2516.59	2548.86	98.73
PSC Fields	10233.60	857.83	826.17	840.60	98.28	7689.41	7512.84	7537.25	99.68
Total	37011.60	3184.96	2862.35	2991.06	95.70	27541.98	25937.54	26934.81	96.30

Note: Totals may not tally due to rounding off.

*: Provisional

Figure-1: Monthly Crude Oil Production



¹Including condensate

Unit-wise production details with reasons for shortfall are as under:

1.1 Crude oil production by **ONGC** during December, 2018 was 1761.22 TMT which is 11.85% lower than the monthly target and 5.42% lower when compared with December, 2017. Cumulative crude oil production by ONGC during April-December, 2018 was 15908.11 TMT which is 6.93% lower than target for the period and lower by 5.58% than production during corresponding period of last year. Reasons for shortfall are as under:

- Loss from WO-16 and B-127 fields in the absence of MOPUs Sagar Samrat and Sagar Laxmi.
- Electric submersible pump (ESP) problem in wells of NB Prasad (NBP) field.
- Sub-sea leakage in some well fluid lines of Mumbai High & Neelam Heera Asset, leading to flow restriction.
- Decline in liquid production / increase in water cut in various fields of Mehsana, Rajahmundry and Assam Assets.
- Power shut-downs & Electrical faults in Mehsana and Assam Assets.

1.2 Crude oil production by **OIL** during December, 2018 was 274.96 TMT which is 16.45% lower than monthly target and 4.66% lower when compared with December, 2017. Cumulative crude oil production by OIL during April-December, 2018 was 2516.59 TMT which is 8.83% lower than target for the period and 1.27% lower than production during the corresponding period of last year. Major reason for lower production is less than planned contribution from work over wells and drilling wells.

1.3 Crude oil production by **Pvt/JVs** in PSC regime during December, 2018 was 826.17 TMT which is 3.69% lower than the monthly target and 1.72% lower than December, 2017. Cumulative crude oil production by Pvt/JVs during April-December, 2018 was 7512.84 TMT which is 2.3% lower than target for the period and marginally lower by 0.32% than the production during the corresponding period of last year. Major reasons in for lower production are;

- Major deficit in production is from Mangala due to delay in Mangala Processing Terminal (MPT) Upgrade and 45 infills.
- Decline in production from stage-I wells and delay in stage-II wells in the Aishwarya Barmer Hill (ABH) field.
- Around 55 oil wells are closed due to various reasons like high water cut, require Work-over-Job (WOJ), etc. and 32 wells are closed due to liquid handling constraint at MPT plant (Cairn Energy India Ltd).

2. Natural Gas

Natural gas production during December, 2018 was 2866.51 MMSCM which is 4.86% lower than the target for the month but 4.19% higher when compared with December, 2017. Cumulative natural gas production during April-December, 2018 was 24650.25 MMSCM

which is 7.26% lower than target for the period and marginally 0.15% lower than the production during corresponding period of last year. Unit-wise and state-wise natural gas production is given at **Annexure-II**. Unit-wise natural gas production for the month of December, 2018 and cumulatively for the period April-December, 2018 vis-à-vis same period of last year has been shown in Table-2 and month-wise in Figure-2.

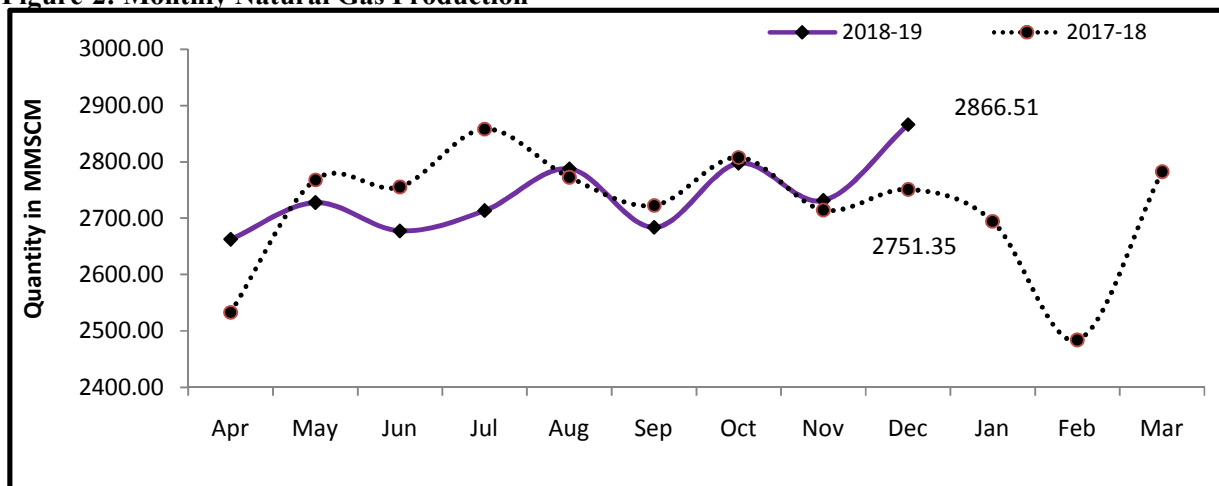
Table-2: Natural Gas Production (MMSCM)

Oil Company	Target	December (Month)				April-December (Cumulative)			
	2018-19 (Apr-Mar)	2018-19		2017-18	% over last year	2018-19		2017-18	% over last year
		Target	Prod.*	Prod.		Target	Prod.*	Prod.	
ONGC	25981.00	2246.54	2197.00	2000.79	109.81	19434.26	18416.30	17651.17	104.33
OIL	3120.00	264.65	232.65	236.97	98.18	2388.19	2060.79	2196.98	93.80
PSC Fields	6498.11	501.84	436.86	513.59	85.06	4758.12	4173.16	4839.37	86.23
Total	35599.11	3013.03	2866.51	2751.35	104.19	26580.57	24650.25	24687.52	99.85

Note: Totals may not tally due to rounding off.

*: Provisional

Figure-2: Monthly Natural Gas Production



2.1 Natural gas production by **ONGC** during December, 2018 was 2197.0 MMSCM which is 2.21% lower than the monthly target but 9.81% higher when compared with December, 2017. Cumulative natural gas production by ONGC during April-December, 2018 was 18416.30 MMSCM which is 5.24% lower than the cumulative target but 4.33% higher than the production during the corresponding period of the last year. Some of the reasons for shortfall against monthly target are as under:

- Less than planned gas production from WO-16 and B-127 fields in the absence of MOPUs Sagar Samrat and Sagar Laxmi.
- Decline of pressure/potential in GS-4 Gas cap reservoir in Gandhar.

2.2 Natural gas production by **OIL** during December, 2018 was 232.65 MMSCM which is 12.09% lower than the monthly target and 1.82% lower than December, 2017. Cumulative natural gas production by OIL during April-December, 2018 was 2060.79 MMSCM which is 13.71% lower than the cumulative target and 6.2% lower than the production during the corresponding period of last year. Major reason for lower production is loss of potential in Deohal area due to presence of CO₂ in production stream and due to bandh and miscreant activities.

2.3 Natural gas production by **Pvt/JVs** during December, 2018 was 436.86 MMSCM which is 12.95% lower than the monthly target and 14.94% lower when compared with December, 2017. Cumulative natural gas production by Pvt/JVs during April-December, 2018 was 4173.16 MMSCM which is 12.29% lower than the cumulative target and 13.77% lower than the production during the corresponding period of last year. Reasons for shortfall in production are as under:

- Sohagpur West CBM Block: Underperformance of Coal Bed Methane (CBM) wells. Production impacted due to the constraint imposed by IFFCO on CBM offtake. (RIL)
- RJ-ON/6: Less offtake by buyer. Low gas production due to stuck up in two wells. (Focus Energy Ltd)

3. Refinery Production (in terms of crude oil processed)

Refinery production during December, 2018 was 21031.92 TMT which is 4.32% lower than the target for the month and 4.96% lower when compared with December, 2017. Cumulative production during April-December, 2018 was 192681.14 TMT which is 1.0% higher than the target for the period and 2.51% higher than the production during corresponding period of last year. Unit-wise production is given at **Annexure-III**. Company-wise production for the month of December, 2018 and cumulatively for the period April-December, 2018 vis-à-vis same period of last year has been shown in Table-3 and month-wise in Figure-3.

Figure 3: Monthly Refinery Production

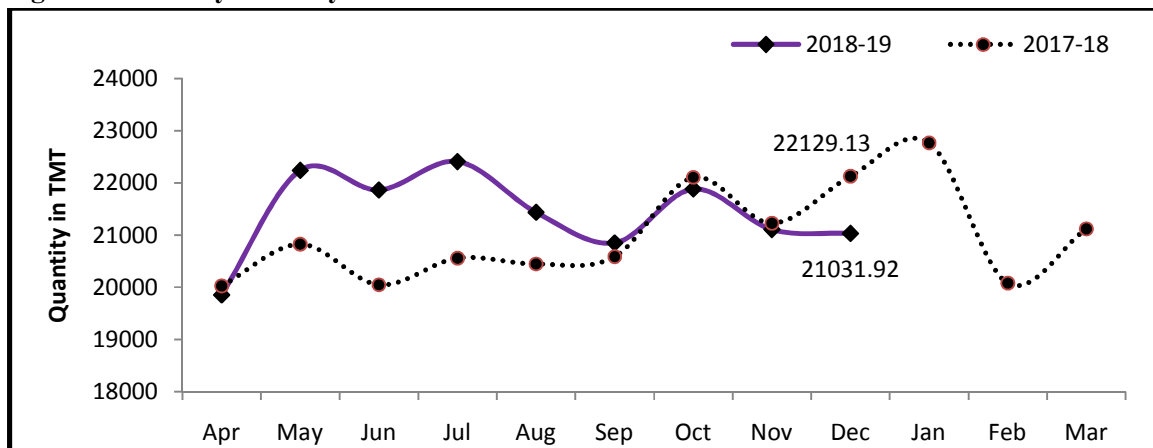


Table 3: Refinery Production (TMT)

Oil Company	Target	December (Month)				April-December (Cumulative)			
	2018-19 (Apr-Mar)	2018-19		2017-18	% over last year	2018-19		2017-18	% over last year
		Target	Prod.*	Prod.		Target	Prod.*	Prod.	
CPSE	147759	13103.33	12752.29	12793.63	99.68	111451.17	113137.37	108059.41	104.70
IOCL	71150	6329.96	6329.93	5985.89	105.75	54146.98	54464.61	51848.94	105.04
BPCL	29000	2566.43	2216.36	2527.91	87.68	21690.21	22754.95	20441.10	111.32
HPCL	18000	1554.71	1491.18	1568.14	95.09	13488.00	13842.12	13646.22	101.44
CPCL	10500	930.00	977.65	945.43	103.41	7960.00	7805.48	7976.15	97.86
NRL	2850	242.05	263.51	241.55	109.09	2147.26	2199.15	2135.13	103.00
MRPL	16200	1475.00	1468.35	1517.44	96.77	11975.00	12027.39	11951.74	100.63
ONGC	59	5.18	5.31	7.27	73.00	43.72	43.67	60.12	72.63
JVs	17240	1583.00	1658.13	1625.05	102.04	12623.00	13069.40	10942.45	119.44
BORL	6400	660.00	572.90	623.95	91.82	4460.00	3659.80	5037.82	72.65
HMEL	10840	923.00	1085.23	1001.09	108.40	8163.00	9409.61	5904.63	159.36
Private	88896	7295.34	6621.50	7710.46	85.88	66696.97	66474.38	68961.98	96.39
RIL	70470	5941.67	6139.41	5941.67	103.33	53418.97	52654.58	53418.97	98.57
NEL	18426	1353.67	482.09	1768.79	27.26	13278.00	13819.80	15543.01	88.91
TOTAL	253895	21981.67	21031.92	22129.13	95.04	190771.14	192681.14	187963.83	102.51

Note: Totals may not tally due to rounding off.

*: Provisional

3.1 **CPSE Refineries' production** during December, 2018 was 12752.29 TMT which is 2.68% lower than the target for the month and 0.32% lower when compared with December, 2017. Cumulative production by CPSE refineries during April-December, 2018 was 113137.37 TMT which is 1.51% higher than the target for the period and 4.7% higher than the production during corresponding period of last year. Reasons for shortfall of refinery production in some CPSE refineries are as under:

- IOCL-Guwahati: Lower due to Crude Distillation Unit (CDU) idling for extended Delayed Coker Unit (DCU) Steam Air Decoking (SAD) shutdown.
- IOCL-Gujarat: Lower due to lower crude receipt and restricted DCU throughput.
- IOCL-Digboi: Marginally lower due to Catalyst Regeneration Unit (CRU) shutdown for catalyst regeneration.
- BPCL-Kochi: Planned maintenance turnaround of Integrated Refinery Expansion Project (IREP) Units.
- HPCL-Visakh: Lower due to ullage criticality of products due to shutdown of secondary units.
- MRPL-Mangalore: Lower due to delay in arrival of crude vessels.

3.2 **Production in JV refineries** during December, 2018 was 1658.13 TMT which is 4.75% higher than the target for the month and 2.04% higher when compared with December, 2017. Cumulative production by JVs refineries during April-December, 2018 was 13069.40 TMT which is 3.54% higher than the target for the period and 19.44% higher than the production during corresponding period of last year.

- 3.3 **Production in private refineries** during December, 2018 was 6621.50 TMT which is lower by 9.24% than the target for the month and 14.12% lower when compared with December, 2017. Cumulative production by private refineries during April-December, 2018 was 66474.38 TMT which is 0.33% lower than the target for the period and 3.61% lower than the production during corresponding period of last year.
- 3.4 Refinery-wise details of the capacity utilization and production of petroleum products during the month of December, 2018 and cumulatively for the period April-December, 2018 vis-à-vis April-December, 2017 are given at **Annexures - IV and V** respectively.

MINISTRY OF PETROLEUM & NATURAL GAS

Annexure-I

Crude Oil Production during the month of December, 2018 and cumulatively for the period April-Nov, 2018 vis-à-vis April-Nov, 2017

(Para 1)

(Qty: '000' Tonnes)

Name of Undertaking/Unit/State	Planned production during the month*	Production during the			Cumulative Production			% variation over last year		% variation during the month under review over planned production
		Month under review *	Corresponding month of last year **	Preceding month of current year **	(April-December)			During the month under review	Upto the end of the period	
					Planned production during current year*	Actual production during current year *	Actual production during corresponding period of last year **			
(1)	(2)	(3)	(4)	(5)	(6)	(7)	(8)	(9)	(10)	(11)
1. ONGC	1998.02	1761.22	1862.08	1705.36	17092.31	15908.11	16848.70	-5.42	-5.58	-11.85
Onshore	524.80	512.19	508.62	495.70	4602.75	4567.55	4524.43	0.70	0.95	-2.40
Andhra Pradesh	24.84	23.73	27.08	23.62	249.35	217.41	248.95	-12.38	-12.67	-4.50
Assam ^	93.03	85.84	83.36	82.08	780.07	753.10	735.48	2.98	2.40	-7.73
Gujarat	387.88	376.76	376.84	366.84	3408.02	3375.39	3343.48	-0.02	0.95	-2.87
Tamil Nadu	19.04	25.86	21.35	23.16	165.32	221.66	196.52	21.10	12.79	35.82
Offshore	1473.23	1249.04	1353.45	1209.66	12489.56	11340.56	12324.26	-7.71	-7.98	-15.22
Eastern Offshore	0.68	1.81	0.65	1.55	6.29	12.52	6.35	179.17	97.22	165.68
Western Offshore	1345.93	1114.65	1232.74	1085.93	11423.78	10203.51	11237.64	-9.58	-9.20	-17.18
Condensates	126.62	132.58	120.06	122.17	1059.49	1124.53	1080.28	10.43	4.10	4.71
2. OIL (Onshore)	329.10	274.96	288.38	272.93	2760.25	2516.59	2548.86	-4.66	-1.27	-16.45
Assam	328.00	273.77	287.65	271.93	2752.85	2508.79	2541.96	-4.83	-1.30	-16.53
Arunachal Pradesh	0.91	0.77	0.61	0.74	5.75	5.79	5.65	24.96	2.53	-16.01
Rajasthan (heavy oil)	0.19	0.42	0.12	0.25	1.66	2.01	1.25	260.34	59.96	123.71
3. Private / JVC	857.83	826.17	840.60	802.31	7689.41	7512.84	7537.25	-1.72	-0.32	-3.69
Onshore	729.15	653.84	691.06	638.50	6410.37	6075.69	6102.45	-5.38	-0.44	-10.33
Andhra Pradesh	8.31	0.64	0.00	0.59	35.51	8.88	0.00	299.78	0.00	-92.30
Arunachal Pradesh	3.72	2.70	3.61	2.62	33.32	25.99	33.06	-25.28	-21.41	-27.35
Assam	3.53	3.34	0.47	2.77	31.35	24.27	1.15	29.18	-	-5.40
Gujarat	19.58	10.60	12.14	10.51	153.67	101.97	103.21	-12.68	-1.20	-45.88
Rajasthan	683.59	628.50	667.77	614.18	6064.07	5845.85	5901.56	-5.88	-0.94	-8.06
Tamil Nadu	10.42	8.06	7.07	7.84	92.45	68.73	63.47	14.00	8.28	-22.65
Offshore	128.68	172.32	149.54	163.82	1279.05	1437.15	1434.80	15.23	0.16	33.92
Eastern Offshore	44.75	55.02	63.82	57.28	455.79	490.21	629.58	-13.79	-22.14	22.95
Gujarat Offshore	45.11	70.36	30.98	63.82	420.82	544.47	285.01	127.11	91.04	55.97
Western Offshore	38.82	46.95	54.75	42.72	402.45	402.47	520.22	-14.25	-22.63	20.94
GRAND TOTAL (1+2+3)	3184.96	2862.35	2991.06	2780.60	27541.98	25937.54	26934.81	-4.30	-3.70	-10.13
Onshore	1583.05	1440.99	1488.06	1407.12	13773.37	13159.82	13175.74	-3.16	-0.12	-8.97
Offshore	1601.91	1421.36	1503.00	1373.48	13768.61	12777.71	13759.07	-5.43	-7.13	-11.27

Note: Totals may not tally due to rounding off figures.

^: Includes crude oil production of Tripura

*: Provisional. **: Revised

Reasons for shortfall are indicated in the note.

MINISTRY OF PETROLEUM & NATURAL GAS

Annexure-II

Natural Gas Production during the month of December, 2018 and cumulatively for the period April-December, 2018 vis-à-vis April-December, 2017

(Para 2)

(Qty: Million Cubic Meters)

Name of Undertaking/Unit/State	Planned production during the month*	Production during the			Cumulative Production (April-December)			% variation over last year		% variation during the month under review over planned production
		Month under review *	Corresponding month of last year **	Preceding month of current year **	Planned production during current year*	Actual production during current year *	Actual production during corresponding period of last year **	During the month under review	Upto the end of the period	
(1)	(2)	(3)	(4)	(5)	(6)	(7)	(8)	(9)	(10)	(11)
1. ONGC	2246.54	2197.00	2000.79	2091.44	19434.26	18416.30	17651.17	9.81	4.33	-2.21
Onshore	495.83	486.86	476.50	473.89	4390.54	4227.74	4230.66	2.17	-0.07	-1.81
Andhra Pradesh	87.00	91.68	82.87	91.28	813.83	816.38	689.55	10.63	18.39	5.38
Assam	43.09	39.10	41.95	39.36	362.63	366.39	383.27	-6.81	-4.40	-9.27
Gujarat	123.94	113.93	127.35	109.46	1146.96	1004.37	1181.95	-10.54	-15.02	-8.08
Rajasthan	0.48	0.00	0.43	0.00	4.22	4.31	3.54	-	21.80	-
Tamil Nadu	97.61	99.47	101.00	95.63	872.27	891.99	895.07	-1.51	-0.34	1.90
Tripura	143.72	142.69	122.90	138.17	1190.63	1144.30	1077.28	16.11	6.22	-0.72
Offshore	1750.71	1710.14	1524.29	1617.54	15043.72	14188.56	13420.51	12.19	5.72	-2.32
Eastern Offshore	180.02	1584.41	41.89	90.62	1513.75	2163.79	425.13	-	408.97	-
Western Offshore	1570.69	125.74	1482.40	1526.93	13529.97	12024.77	12995.38	-91.52	-7.47	-91.99
2. OIL	264.65	232.65	236.97	226.88	2388.19	2060.79	2196.98	-1.82	-6.20	-12.09
Assam	245.31	211.11	216.43	207.24	2216.58	1886.01	2031.16	-2.46	-7.15	-13.94
Arunachal Pradesh	1.09	0.37	0.96	0.84	9.63	9.88	8.75	-61.85	12.93	-66.18
Rajasthan	18.26	21.17	19.58	18.79	161.98	164.90	157.08	8.12	4.98	15.93
3. Private / JVC	501.84	436.86	513.59	413.47	4758.12	4173.16	4839.37	-14.94	-13.77	-12.95
Onshore	157.79	131.41	120.12	124.09	1346.19	1254.27	1018.62	9.40	23.13	-16.72
Andhra Pradesh	3.36	0.19	0.00	0.28	14.57	3.62	0.00	0.00	0.00	-94.22
Arunachal Pradesh	30.72	1.45	1.69	0.63	37.32	12.38	19.47	-14.24	-36.41	-95.27
Assam	0.84	30.53	7.69	25.29	242.66	229.54	15.95	-	-	-
Gujarat	8.86	5.84	5.99	5.76	69.16	53.63	58.43	-2.64	-8.21	-34.16
Rajasthan	111.28	90.94	103.53	89.69	958.27	936.53	914.73	-12.16	2.38	-18.28
Tamil Nadu	2.73	2.46	1.21	2.44	24.20	18.58	10.04	103.98	85.02	-9.89
CBM	132.68	63.38	70.80	60.80	1176.99	534.48	540.88	-10.47	-1.18	-52.23
Jharkhand (CBM)	0.36	0.41	0.37	0.22	3.16	2.26	3.18	11.35	-28.91	15.57
Madhya Pradesh (CBM)	79.26	31.74	26.13	30.74	703.16	269.29	123.78	21.48	117.55	-59.96
West Bengal (CBM)	53.06	31.23	44.30	29.84	470.67	262.92	413.91	-29.50	-36.48	-41.13
Offshore	211.37	242.06	322.68	228.59	2234.94	2384.42	3279.87	-24.98	-27.30	14.52
Eastern Offshore	66.73	90.23	177.70	92.95	927.61	1149.01	1798.58	-49.22	-36.12	35.22
Gujarat Offshore	16.11	11.93	8.70	10.87	123.38	85.82	77.38	37.18	10.92	-25.95
Western Offshore	128.53	139.90	136.28	124.77	1183.95	1149.58	1403.91	2.66	-18.12	8.85
TOTAL (1+2+3)	3013.03	2866.51	2751.35	2731.79	26580.57	24650.25	24687.52	4.19	-0.15	-4.86
CBM	132.68	63.38	70.80	60.80	1176.99	534.48	540.88	-10.47	-1.18	-52.23
Onshore	918.28	850.92	833.59	824.86	8124.91	7542.80	7446.26	2.08	1.30	-7.34
Offshore	1962.08	1952.20	1846.97	1846.14	17278.66	16572.98	16700.38	5.70	-0.76	-0.50

Note: Totals may not tally due to rounding off figures.

*: Provisional. **: Revised

CBM: Coal Bed Methane production.

Reasons for shortfall are indicated in the note.

MINISTRY OF PETROLEUM & NATURAL GAS

Annexure-III

Crude Oil Processed during the month of December, 2018 and cumulatively for the period April-December, 2018 vis-à-vis April-December, 2017

(Para 3)

(Qty: '000' Tonnes)

Name of Undertaking/Unit	Planned production during the month*	Production during the			Cumulative Production			% variation over last year		% variation during the month under review over planned production
		Month under review *	Corresponding month of last year	Preceding month of current year **	(April-December)			During the month under	Upto the end of the period	
					Planned production during current year*	Actual production during current year *	Actual production during corresponding period of last year **			
(1)	(2)	(3)	(4)	(5)	(6)	(7)	(8)	(9)	(10)	(11)
A. Public Sector	13103.33	12752.29	12793.63	12651.15	111451.17	113137.37	108059.41	-0.32	4.70	-2.68
1. IOC, Guwahati	90.00	15.92	92.35	79.87	786.00	707.10	773.43	-82.76	-8.58	-82.31
2. IOC, Barauni	565.89	599.71	610.06	557.65	4857.10	4933.48	4169.28	-1.70	18.33	5.98
3. IOC, Gujarat	1271.00	1188.66	1288.82	1229.96	10535.99	10266.39	10115.87	-7.77	1.49	-6.48
4. IOC, Haldia	680.00	688.71	179.71	571.83	5980.00	5999.34	5597.51	283.24	7.18	1.28
5. IOC, Mathura	790.00	821.51	881.41	841.45	7087.10	7374.96	6800.44	-6.80	8.45	3.99
6. IOC, Digboi	56.00	53.70	51.12	56.47	491.00	508.50	497.22	5.04	2.27	-4.11
7. IOC, Panipat	1370.00	1388.50	1366.79	1340.27	12136.00	12295.65	11621.07	1.59	5.80	1.35
8. IOC, Bongaigaon	186.85	226.60	254.00	197.84	1653.73	1832.30	1768.12	-10.79	3.63	21.28
9. IOC, Paradip	1320.22	1346.63	1261.65	1348.64	10620.06	10546.89	10506.00	6.74	0.39	2.00
Total IOC	6329.96	6329.93	5985.89	6223.98	54146.98	54464.61	51848.94	5.75	5.04	0.00
10. BPCL, Mumbai	1169.73	1260.60	1316.92	1217.70	10199.39	10985.04	10276.89	-4.28	6.89	7.77
11. BPCL, Kochi	1396.70	955.77	1210.99	1350.72	11490.82	11769.91	10164.22	-21.08	15.80	-31.57
Total BPCL	2566.43	2216.36	2527.91	2568.42	21690.21	22754.95	20441.10	-12.32	11.32	-13.64
12. HPCL, Mumbai	729.57	725.67	759.12	751.83	6332.00	6529.17	6468.61	-4.41	0.94	-0.54
13. HPCL, Visakh	825.14	765.51	809.02	793.74	7156.01	7312.95	7177.61	-5.38	1.89	-7.23
Total HPCL	1554.71	1491.18	1568.14	1545.57	13488.00	13842.12	13646.22	-4.91	1.44	-4.09
14. CPCL, Manali	930.00	938.70	895.36	582.05	7660.00	7498.79	7612.96	4.84	-1.50	0.94
15. CPCL, CBR	0.00	38.95	50.07	45.23	300.00	306.70	363.19	-22.21	-15.55	-
Total CPCL	930.00	977.65	945.43	627.28	7960.00	7805.48	7976.15	3.41	-2.14	5.12
16. NRL, Numaligarh	242.05	263.51	241.55	253.49	2147.26	2199.15	2135.13	9.09	3.00	8.86
17. MRPL, Mangalore	1475.00	1468.35	1517.44	1428.39	11975.00	12027.39	11951.74	-3.23	0.63	-0.45
18. ONGC, Tatipaka	5.18	5.307	7.27	4.017	43.72	43.67	60.12	-27.00	-27.37	2.42
B. Joint Venture	1583.00	1658.13	1625.05	1532.98	12623.00	13069.40	10942.45	2.04	19.44	4.75
19. BORL, Bina	660.00	572.90	623.95	490.21	4460.00	3659.80	5037.82	-8.18	-27.35	0.00
20. HMEI, GGSR, Bhatinda	923.00	1085.23	1001.09	1042.77	8163.00	9409.61	5904.63	8.40	59.36	17.58
C. Private Sector	7295.34	6621.50	7710.46	6924.09	66696.97	66474.38	68961.98	-14.12	-3.61	-9.24
21. RIL, Jamnagar	2661.36	2806.98	2661.36	2683.79	24721.94	24716.03	24721.94	5.47	-0.02	5.47
22. RIL, SEZ	3280.31	3332.43	3280.31	3230.18	28697.02	27938.54	28697.02	1.59	-2.64	1.59
Total RIL	5941.67	6139.41	5941.67	5913.97	53418.97	52654.58	53418.97	3.33	-1.43	3.33
23. NEL, Vadinar	1353.67	482.09	1768.79	1010.11	13278.00	13819.80	15543.01	-72.74	-11.09	-64.39
TOTAL(A+B+C)	21981.67	21031.92	22129.13	21108.21	190771.14	192681.14	187963.83	-4.96	2.51	-4.32

Note: Totals may not tally due to rounding off figures. *: Provisional. **:Revised

Reasons for shortfall are indicated in the note.

MINISTRY OF PETROLEUM & NATURAL GAS

Annexure-IV

Refinery-wise Capacity Utilisation during the month of December, 2018 and cumulatively for the period April-December, 2018 vis-à-vis April-December, 2017

(Para 3.4)

(Qty: '000' Tonnes)

Name of Undertaking/Unit	December, 2018			December, 2017			Cumulative (April - December)					
	Prorated Installed Capacity	Actual Crude T'put *	% Utilisation of Installed Capacity	Prorated Installed Capacity	Actual Crude T'put	% Utilisation of Installed Capacity	2018-19			2017-18		
							Prorated Installed Capacity	Actual Crude T'put *	% Utilisation of Installed Capacity	Prorated Installed Capacity	Actual Crude T'put **	% Utilisation of Installed Capacity
(1)	(2)	(3)	(4)	(5)	(6)	(7)	(8)	(9)	(10)	(11)	(12)	(13)
A. Public Sector	12066.00	12752.29	105.69	11805.00	12793.63	108.37	107036.00	113137.37	105.70	104723.00	108059.41	103.19
1. IOC, Guwahati	85.00	15.92	18.73	85.00	92.35	108.65	753.00	707.10	93.90	753.00	773.43	102.71
2. IOC, Barauni	510.00	599.71	117.59	510.00	610.06	119.62	4521.00	4933.48	109.12	4521.00	4169.28	92.22
3. IOC, Gujarat	1164.00	1188.66	102.12	1164.00	1288.82	110.72	10322.00	10266.39	99.46	10322.00	10115.87	98.00
4. IOC, Haldia	637.00	688.71	108.12	637.00	179.71	28.21	5651.00	5999.34	106.16	5651.00	5597.51	99.05
5. IOC, Mathura	679.00	821.51	120.99	679.00	881.41	129.81	6027.00	7374.96	122.37	6027.00	6800.44	112.83
6. IOC, Digboi	55.00	53.70	97.63	55.00	51.12	92.95	490.00	508.50	103.78	490.00	497.22	101.47
7. IOC, Panipat	1274.00	1388.50	108.99	1274.00	1366.79	107.28	11301.00	12295.65	108.80	11301.00	11621.07	102.83
8. IOC, Bongaigaon	200.00	226.60	113.30	200.00	254.00	127.00	1771.00	1832.30	103.46	1771.00	1768.12	99.84
9. IOC, Paradip	1274.00	1346.63	105.70	1274.00	1261.65	0.00	11301.00	10546.89	93.33	11301.00	10506.00	0.00
Total IOC	5877.00	6329.93	107.71	5877.00	5985.89	101.85	52137.00	54464.61	104.46	52137.00	51848.94	99.45
10. BPCL, Mumbai	1019.00	1260.60	123.71	1019.00	1316.92	129.24	9041.00	10985.04	121.50	9041.00	10276.89	113.67
11. BPCL, Kochi	1316.00	955.77	72.63	1053.00	1210.99	115.00	11678.00	11769.91	100.79	9342.00	10164.22	108.80
Total BPCL	2336.00	2216.36	94.88	2072.00	2527.91	122.00	20719.00	22754.95	109.83	18384.00	20441.10	111.19
12. HPCL, Mumbai	637.00	725.67	113.92	637.00	759.12	119.17	5651.00	6529.17	115.54	5651.00	6468.61	114.47
13. HPCL, Visakh	705.00	765.51	108.58	707.00	809.02	114.43	6253.00	7312.95	116.95	6276.00	7177.61	114.37
Total HPCL	1342.00	1491.18	111.12	1344.00	1568.14	116.68	11904.00	13842.12	116.28	11927.00	13646.22	114.41
14. CPCL, Manali	892.00	938.70	105.24	892.00	895.36	100.38	7911.00	7498.79	94.79	7911.00	7612.96	96.23
15. CPCL, CBR	85.00	38.95	45.82	85.00	50.07	58.91	753.00	306.70	40.73	753.00	363.19	48.23
Total CPCL	977.00	977.65	100.07	977.00	945.43	96.77	8664.00	7805.48	90.09	8664.00	7976.15	92.06
16. NRL, Numaligarh	255.00	263.51	103.34	255.00	241.55	263.51	2260.00	2199.15	97.31	2260.00	2135.13	94.47
17. MRPL, Mangalore	1274.00	1468.35	115.26	1274.00	1517.44	119.11	11301.00	12027.39	106.43	11301.00	11951.74	105.76
18. ONGC, Tatipaka	6.00	5.31	88.45	6.00	7.27	121.16	50.00	43.67	87.34	50.00	60.12	120.25
B. Joint Venture	1469.00	1658.13	112.87	1274.00	1625.05	127.55	13034.00	13069.40	100.27	11301.00	10942.45	96.83
19. BORL, Bina	510.00	572.90	112.33	510.00	623.95	122.34	4521.00	3659.80	80.95	4521.00	5037.82	111.43
20. HMEL, GGSR, Bhatinda	960.00	1085.23	113.04	764.00	1001.09	131.03	8514.00	9409.61	110.52	6781.00	5904.63	87.08
C. Private Sector	7491.00	6621.50	88.39	6795.00	7710.46	113.47	66452.00	66474.38	100.03	60274.00	68961.98	114.41
21. RIL, Jamnagar	2803.00	2806.98	100.14	2803.00	2661.36	94.95	24863.00	24716.03	99.41	24863.00	24721.94	99.43
22. RIL, SEZ	2990.00	3332.43	111.45	2293.00	3280.31	143.06	26521.00	27938.54	105.34	20342.00	28697.02	141.07
Total RIL	5792.00	6139.41	106.00	5096.00	5941.67	116.59	51384.00	52654.58	102.47	45205.00	53418.97	118.17
23. NEL, Vadinar	1699.00	482.09	28.38	1699.00	1768.79	104.11	15068.00	13819.80	91.72	15068.00	15543.01	103.15
TOTAL(A+B+C)	21026.00	21031.92	100.03	19874.00	22129.13	111.35	186522.00	192681.14	103.30	176298.00	187963.83	106.62

Note: Crude throughput in terms of crude oil processed. *: Provisional. **: Revised

MINISTRY OF PETROLEUM & NATURAL GAS

Production of Petroleum Products during the month of December, 2018 and cumulatively for the period April-December, 2018 vis-à-vis April-December, 2017

Annexure-V

(Para 3.4)

(Qty: '000' Tonnes)

Name of Undertaking/Unit	Planned production during the month*	Production during the			Cumulative Production			% variation over last year		% variation during the month under review over planned production
		Month under review *	Corresponding month of last year	Preceding month of current year **	(April-December)			During the month under review	Upto the end of the period	
(1)	(2)	(3)	(4)	(5)	(6)	(7)	(8)			(9)
I. Refinery										
A. Public Sector	12222.20	12232.82	12112.11	12182.97	104507.45	107233.09	102124.30	1.00	5.00	0.09
1. IOC, Guwahati	86.60	65.71	103.75	110.08	759.55	839.47	858.50	-36.67	-2.22	-24.13
2. IOC, Barauni	528.42	558.56	576.28	545.16	4517.84	4634.25	3876.44	-3.07	19.55	5.70
3. IOC, Gujarat	1175.89	1164.55	1249.61	1143.53	9755.10	9728.32	9707.27	-6.81	0.22	-0.96
4. IOC, Haldia	629.75	609.79	154.53	548.73	5523.90	5613.85	5215.81	294.61	7.63	-3.17
5. IOC, Mathura	760.59	818.83	835.60	820.45	6820.30	7236.56	6733.19	-2.01	7.48	7.66
6. IOC, Digboi	56.43	54.62	54.73	58.49	485.10	512.55	500.86	-0.20	2.33	-3.20
7. IOC, Panipat	1346.40	1468.33	1442.51	1484.55	12306.36	12652.03	11653.11	1.79	8.57	9.06
8. IOC, Bongaigaon	173.64	220.92	221.77	194.38	1512.18	1704.32	1604.89	-0.38	6.20	27.23
9. IOC, Paradip	1193.45	1235.20	1151.94	1222.34	9557.11	9549.32	9445.49	7.23	1.10	3.50
Total IOC	5951.17	6196.50	5790.72	6127.70	51237.45	52470.67	49595.54	7.01	5.80	4.12
10. BPCL, Mumbai	1125.06	1214.07	1268.95	1199.37	9811.02	10572.03	9968.12	-4.33	6.06	7.91
11. BPCL, Kochi	1296.70	891.55	1153.93	1286.97	10684.22	11021.44	9625.15	-22.74	14.51	-31.24
Total BPCL	2421.76	2105.62	2422.88	2486.34	20495.24	21593.47	19593.27	-13.09	10.21	-13.05
12. HPCL, Mumbai	667.61	699.47	703.21	714.22	5923.78	6186.25	6046.80	-0.53	2.31	4.77
13. HPCL, Visakh	763.15	737.61	726.70	756.00	6617.50	6827.75	6626.49	1.50	3.04	-3.35
Total HPCL	1430.76	1437.09	1429.91	1470.23	12541.28	13014.00	12673.29	0.50	2.69	0.44
14. CPCL, Manali	841.99	856.61	815.01	510.45	6919.59	6745.22	6922.57	5.10	-2.56	1.74
15. CPCL, CBR	0.00	39.23	50.14	45.20	303.60	308.36	365.78	-21.77	-15.70	-
Total CPCL	841.99	895.84	865.15	555.65	7223.19	7053.58	7288.35	3.55	-3.22	6.39
16. NRL, Numaligarh	236.33	267.51	239.62	255.35	2096.49	2179.39	2145.51	11.64	1.58	13.19
17. MRPL, Mangalore	1335.18	1325.10	1356.96	1283.79	10871.56	10880.15	10771.45	-2.35	1.01	-0.76
18. ONGC, Tatipaka	5.01	5.17	6.87	3.91	42.23	41.83	56.90	-24.84	-26.49	3.21
B. Joint Venture	1460.76	1569.99	1526.43	1426.36	11751.16	12235.07	10164.21	2.85	20.37	7.48
19. BORL, Bina	584.76	549.18	563.42	408.93	4005.36	3290.79	4588.93	-2.53	-28.29	-6.09
20. HMEL, GGSR, Bhatinda	876.00	1020.81	963.02	1017.43	7745.80	8944.28	5575.28	6.00	60.43	16.53
C. Private Sector	8121.01	7213.54	8500.30	7837.42	71082.64	73543.11	73221.23	-15.14	0.44	-11.17
21. RIL, Jamnagar	2861.02	2821.64	2861.02	2879.61	24943.77	25974.47	24943.77	-1.38	4.13	-1.38
22. RIL, SEZ	3961.32	3994.97	3961.32	4018.48	33403.86	34443.13	33403.86	0.85	3.11	0.85
Total RIL	6822.34	6816.62	6822.34	6898.09	58347.64	60417.60	58347.64	-0.08	3.55	-0.08
23. NEL, Vadinar	1298.67	396.92	1677.96	939.33	12735.00	13125.52	14873.59	-76.34	-11.75	-69.44
TOTAL(A+B+C)	21803.97	21016.34	22138.84	21446.76	187341.24	193011.27	185509.74	-5.07	4.04	-3.61
II. Fractionators										
ONGC	276.68	306.07	292.65	284.16	2417.01	2662.43	2446.21	4.59	8.84	10.62
GAIL	110.00	118.79	99.82	99.87	904.60	990.58	954.38	19.00	3.79	7.99
OIL	3.20	1.40	3.30	3.31	26.50	24.54	24.61	-57.69	-0.26	-56.31
D. Total Fractionators	389.88	426.25	395.77	387.35	3348.11	3677.55	3425.19	7.70	7.37	9.33
Grand Total (A+B+C+D)	22193.85	21442.60	22534.61	21834.10	190689.35	196688.83	188934.93	-4.85	4.10	-3.38

Note: Totals may not tally due to rounding off figures.

*: Provisional.

**: Revised