

**Government of India**  
**Ministry of Petroleum and Natural Gas**  
**Economic & Statistics Division**

\*\*\*\*\*

New Delhi  
Dated the 24<sup>th</sup> March, 2020

**Monthly Production Report**  
**February, 2020**

**1. Crude Oil**

**Crude oil production<sup>1</sup>** during February, 2020 was 2399.51 TMT which is 16.99% lower than target and 6.41% lower when compared with February 2019. Cumulative crude oil production during April-February, 2019-20 was 29471.85 TMT which is 7.63% and 5.99% lower than target for the period and production during corresponding period of last year respectively. Unit-wise and State-wise crude oil production is given at **Annexure-I**. Unit-wise crude oil production for the month of February, 2020 and cumulatively for the period April-February, 2019-20 vis-à-vis same period of last year has been shown in Table-1 and month-wise in **Figure-1**.

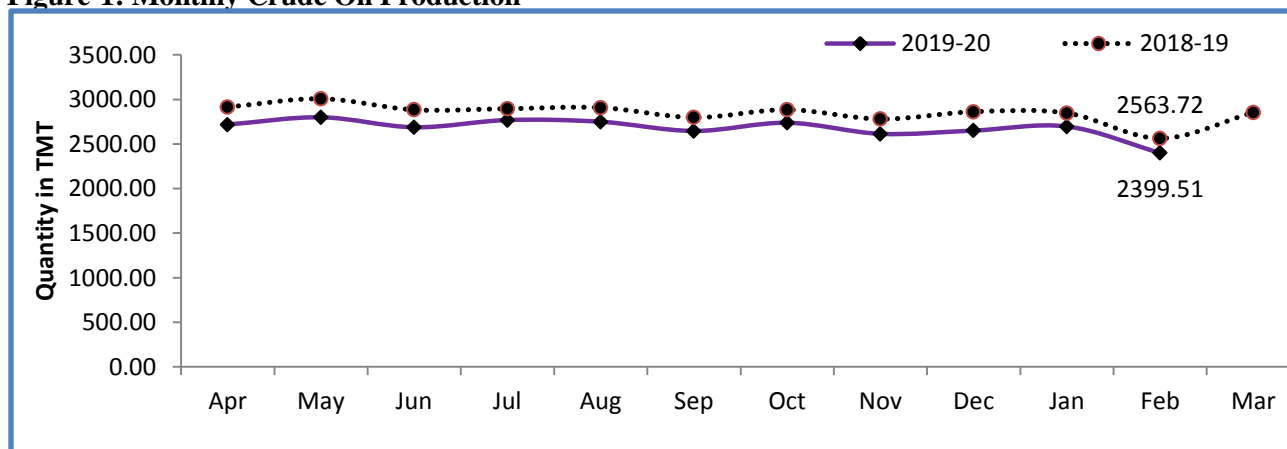
**Table-1: Crude Oil Production (in TMT)**

Oil Company	Target	February (Month)				April-February (Cumulative)			
	2019-20 (Apr-Mar)	2019-20		2018-19	% over last year	2019-20		2018-19	% over last year
		Target	Prod.*	Prod.		Target	Prod.*	Prod.	
ONGC	22153.90	1899.95	1672.96	1598.79	104.64	20072.45	18848.84	19273.93	97.79
OIL	3424.90	276.56	240.26	243.68	98.59	3130.67	2852.55	3015.03	94.61
PSC Fields	9463.34	714.13	486.29	721.25	67.42	8703.49	7770.46	9059.98	85.77
<b>Total</b>	<b>35042.15</b>	<b>2890.65</b>	<b>2399.51</b>	<b>2563.72</b>	<b>93.59</b>	<b>31906.61</b>	<b>29471.85</b>	<b>31348.95</b>	<b>94.01</b>

Note: Totals may not tally due to rounding off.

\*: Provisional

**Figure-1: Monthly Crude Oil Production**



<sup>1</sup>Including condensate

Unit-wise production details with reasons for shortfall are as under:

**1.1** Crude oil production by **ONGC** during February, 2020 was 1672.96 TMT which is 4.64% higher when compared with February, 2019 but 11.95% lower than the target for the month. Cumulative crude oil production by ONGC during April-February, 2019-20 was 18848.84 TMT which is 6.10% and 2.21% lower than target for the period and production during corresponding period of last year respectively. Reasons for shortfall in production are as under:

- Non realization of production from WO-16 cluster due to unavailability of MOPU.
- ESP issues in wells of NBP and Ratna fields.
- Less production from B-127 Cluster due to increase in water cut.
- Increase in water cut in certain wells of Mumbai High, Heera, Neelam& B173A fields

**1.2** Crude oil production by **OIL** during February, 2020 was 240.26 TMT which is 13.13% lower than the monthly target and 1.41% lower than the February, 2019. Cumulative crude oil production by OIL during April-February, 2019-20 was 2852.55 TMT which is 8.88% and 5.39% lower than target for the period and production during corresponding period of last year respectively. Reasons for shortfall in production are as under:

- Less than planned contribution from workover and drilling wells.
- Less than planned contribution from Old well- Rise in water cut in wells & Decline in total liquid production of wells as a consequential effect of the wells shut-in during bandhs.

**1.3** Crude oil production by **Pvt/JVs** during February, 2020 was 486.29 TMT which is lower by 31.90% than the monthly target and 32.58% lower than February, 2019. Cumulative crude oil production by Pvt/JVs during April-February, 2019-20 was 7770.46 TMT which is 10.72% and 14.23% lower than target for the period and production during corresponding period of last year respectively. Reasons for shortfall in production are as under:

- RJ-ON-90/1: Shut down during 5<sup>th</sup> to 29<sup>th</sup> February, 2020 for major plant maintenance activities. (CEIL)
- Operational issues in CB-OS/2. (CEIL)
- KG-ONN-2003/1: Less than expected production from wells. (ONGC)
- CB-ONN-2005/9: Environmental clearance issues.

## 2. Natural Gas

**Natural gas production** during February, 2020 was 2340.51 MMSCM which is 17.02% lower than the monthly target and 8.78% lower when compared with February, 2019. Cumulative natural gas production during April-February, 2019-20 was 28769.42 MMSCM which is 8.57%

and 4.29% lower than target for the period and production during corresponding period of last year respectively. Unit-wise and state-wise natural gas production is given at **Annexure-II**. Unit-wise natural gas production for the month of February, 2020 and cumulatively for the period April-February, 2019-20 vis-à-vis same period of last year has been shown in Table-2 and month-wise in Figure-2.

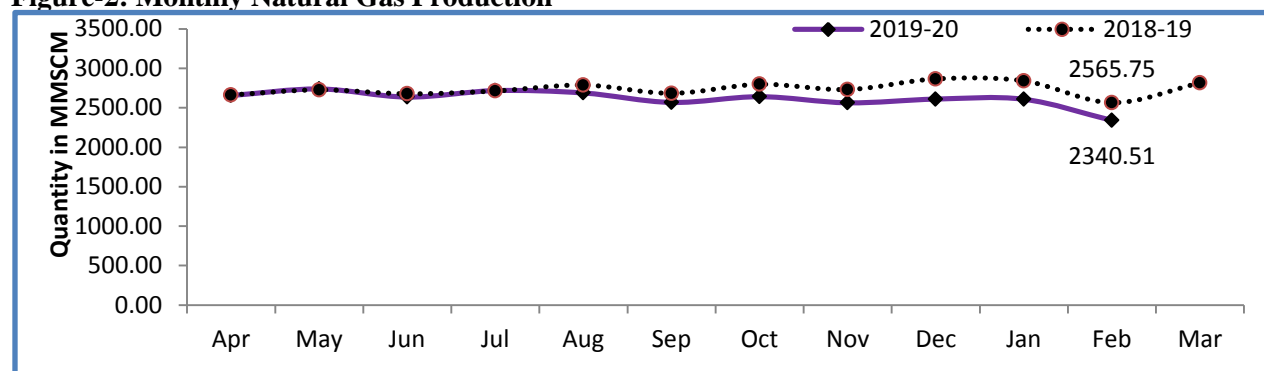
**Table-2: Natural Gas Production (MMSCM)**

Oil Company	Target	February (Month)				April-February (Cumulative)			
	2019-20 (Apr-Mar)	2019-20		2018-19	% over last year	2019-20		2018-19	% over last year
		Target	Prod.*	Prod.		Target	Prod.*	Prod.	
ONGC	25848.00	2184.13	1869.97	1953.74	95.71	23488.80	21841.29	22539.76	96.90
OIL	3309.59	239.55	200.79	203.70	98.57	3037.94	2456.64	2486.78	98.79
PSC Fields	5395.20	396.80	269.76	408.31	66.07	4939.12	4471.49	5030.87	88.88
<b>Total</b>	<b>34552.79</b>	<b>2820.48</b>	<b>2340.51</b>	<b>2565.75</b>	<b>91.22</b>	<b>31465.86</b>	<b>28769.42</b>	<b>30057.41</b>	<b>95.71</b>

Note: Totals may not tally due to rounding off.

\*: Provisional

**Figure-2: Monthly Natural Gas Production**



**1.4** Natural gas production by **ONGC** during February, 2020 was 1869.97 MMSCM which is 14.38% lower than target and 4.29% lower when compared with February 2019. Cumulative natural gas production by ONGC during April-February, 2019-20 was 21841.29 MMSCM which is 7.01% and 3.10% lower than target for the period and production during corresponding period of last year respectively. Reasons for shortfall in production are as under:

- Less Gas production from Vasistha/S1 wells in EOA due sand incursion issues and from DDW No. 5 in HPHT Asset.
- Non-realization of gas production planned from WO16 cluster from Dec'19 in absence of MOPU
- Less than planned gas production from Bassein field and Daman Tapti Block.
- Less gas production due to less gas off take by Consumers, including major customers.

**1.5** Natural gas production by **OIL** during February, 2020 was 200.79 MMSCM which is 16.18% lower than monthly target and 1.43% lower than February, 2019. Cumulative

natural gas production by OIL during April-February, 2019-20 was 2456.64 MMSCM which is 19.13% and 1.21% lower than target for the period and production during corresponding period of last year respectively. Reasons for shortfall in production are as under:

- Production restricted due to continuation of low upliftment by BVFCL (unscheduled plant shutdown at unit II & III)
- Gas supply to LTPS suspended due to intelligent pigging work of Namrup to Lakwa gas pipe line.
- Consequential loss due to effect of bandh/blockades

**1.6** Natural gas production by **Pvt/JVs** during February, 2020 was 269.76 MMSCM which is 32.02% lower than monthly target and 33.93% lower than February, 2019. Cumulative natural gas production by Pvt/JVs during April-February, 2019 was 4471.49 MMSCM which is 9.47% and 11.12% lower than target for the period and production during corresponding period of last year respectively. Reasons for shortfall in production are as under:

- Sohagpur West: Dewatering wells gas breakout awaited, slow gas ramp up in pilot wells & scaling in producing wells. (RIL)
- Raniganj East: Production reduced due to limited off take by customers and to avoid flaring. (ESSAR)
- AAP-ON-94/1: Production shortfall due low consumer demand. (HOEC)
- KG-OSN-2001/3: Production from well D5 is less than anticipated. D5 well is under observation and stabilization. (ONGC)

### **3. Refinery Production (in terms of crude oil processed)**

**Refinery production** during February, 2020 was 21118.17 TMT which is 2.45% higher than the target for the month and 5.15% higher when compared with February, 2019. Cumulative production during April-February, 2019-20 was 233182.24 TMT which is 0.71% higher than the target for the period but 0.65% lower than production during corresponding period of last year respectively. Unit-wise production is given at **Annexure-III**. Company-wise production for the month of February, 2020 and cumulatively for the period April-February, 2019-20 vis-à-Vis same period of last year has been shown in Table-3 and month-wise in Figure-3.

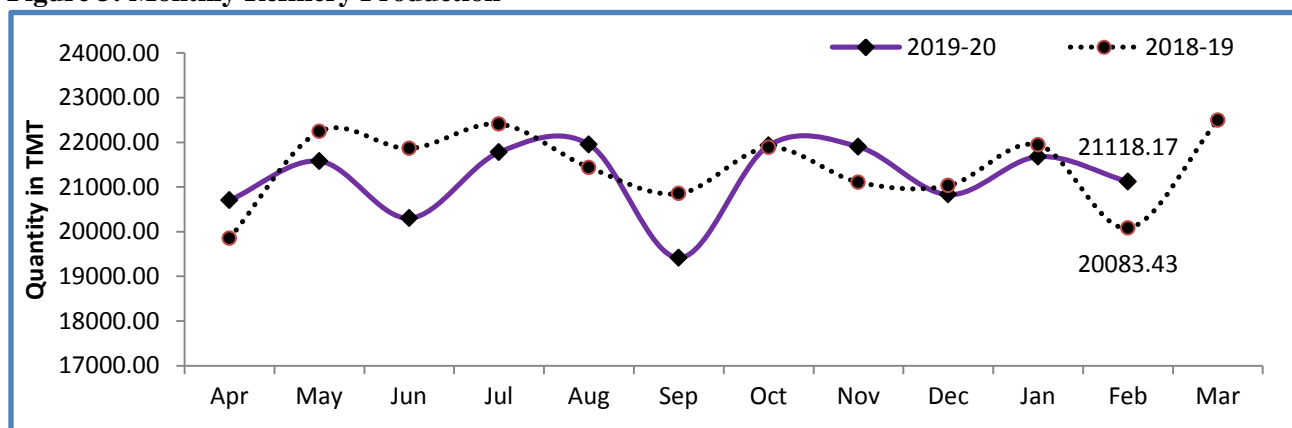
**Table 3: Refinery Production (TMT)**

Oil Company	Target	February (Month)				April-February (Cumulative)			
		2019-20		2018-19		2019-20		2018-19	
		Target	Prod.*	Prod.	% over last year	Target	Prod.*	Prod.	% over last year
CPSE	147944.81	12626.06	12168.69	11939.71	101.92	134279.88	132454.12	138221.71	95.83
IOCL	71900.25	6183.32	5724.23	5519.81	103.70	65196.58	63683.24	66156.17	96.26
BPCL	30900.00	2510.00	2659.50	2521.97	105.45	28205.00	28825.59	28030.39	102.84
HPCL	16499.00	1495.00	1515.18	1466.01	103.35	14901.00	15665.44	16816.77	93.15
CPCL	10400.00	870.00	735.33	881.38	83.43	9470.00	9307.45	9690.82	96.04
NRL	2799.80	234.00	224.69	215.15	104.44	2540.70	2135.69	2654.29	80.46
MRPL	15400.00	1330.00	1304.21	1328.34	98.18	13925.00	12756.43	14815.04	86.10
ONGC	45.76	3.74	5.55	7.06	78.57	41.60	80.29	58.23	137.90
<b>JVs</b>	<b>18755.00</b>	<b>1486.00</b>	<b>1680.43</b>	<b>1642.33</b>	<b>102.32</b>	<b>17167.00</b>	<b>18456.91</b>	<b>16391.13</b>	<b>112.60</b>
BORL	7800.00	620.00	652.22	635.53	102.63	7140.00	7179.70	5013.11	143.22
HMEL	10955.00	866.00	1028.21	1006.81	102.13	10027.00	11277.21	11378.02	99.11
<b>Private</b>	<b>88040.52</b>	<b>6501.38</b>	<b>7269.05</b>	<b>6501.38</b>	<b>111.81</b>	<b>80096.59</b>	<b>82271.22</b>	<b>80096.59</b>	<b>102.72</b>
RIL	69145.00	4921.74	5667.78	4921.74	115.16	62991.09	63370.05	62991.09	100.60
EOL	18895.52	1579.65	1601.27	1579.65	101.37	17105.50	18901.17	17105.50	110.50
<b>TOTAL</b>	<b>254740.32</b>	<b>20613.45</b>	<b>21118.17</b>	<b>20083.43</b>	<b>105.15</b>	<b>231543.47</b>	<b>233182.24</b>	<b>234709.43</b>	<b>99.35</b>

Note: Totals may not tally due to rounding off.

\*: Provisional

**Figure 3: Monthly Refinery Production**



**3.1 CPSE Refineries' production** during February, 2020 was 12168.69 TMT which is 3.62% lower than the target for the month and 1.92% higher when compared with February, 2019. Cumulative production by CPSE refineries during April-February, 2019-20 was 132454.12 TMT which is 1.36% and 4.17% lower than target for the period and production during corresponding period of last year respectively. Reasons for shortfall of refinery production in some CPSE refineries are as under:

- IOCL-Guwahati and Bongaigaon: Shutdown deferment.
- IOCL- Haldia: Lower due to CDU-1 Start-up delay.
- IOCL- Panipat: Lower due to AVU (Atmospheric and Vaccum Distillation Unit) shutdown for maintenance job
- CPCL-Manali: Lower due to CDU-1 outage emergency shutdown.

➤ **NRL- Numaligarh:** As per crude availability

- 3.2 Production in JV refineries** during February, 2020 was 1680.43 TMT which is 13.08% lower than the target for the month and 2.32% higher when compared with February, 2019. Cumulative production by CPSE refineries during April-February, 2019-20 was 18456.91 TMT which is 7.51% and 12.60% lower than target for the period and production during corresponding period of last year respectively..
- 3.3 Production in private refineries** during February, 2020 was 7269.05 TMT which is 11.81% higher than the target as well as corresponding month of last year. Cumulative production by private refineries during April-February, 2019-20 was 82271.22 TMT which is 2.72% higher than the target as well as corresponding period of last year.
- 3.4 Refinery-wise details of the capacity utilization and production of petroleum products** during the month of February, 2020 and cumulatively for the period April-February, 2019-20 vis-à-vis April-February, 2018-19 are given at **Annexures - IV and V** respectively.

\*\*\*\*\*

MINISTRY OF PETROLEUM & NATURAL GAS

Annexure-I (Para-1)

Crude Oil Production during the month of February, 2020 and cumulatively for the period April-February, 2019-20 vis-à-vis April-February, 2018-19

(Figures in Thousand Metric Tons)

Name of Undertaking/Unit/State	Planned production during the month	Production during the			Cumulative Production			% variation over last year		% variation during the month under review over planned production
		Month under review *	Corresponding month of last year	Preceding month of current year **	(April-February)			During the month under review	Upto the end of the period	
					Planned production during current year	Actual production during current year *	Actual production during corresponding period of last year			
(1)	(2)	(3)	(4)	(5)	(6)	(7)	(8)	(9)	(10)	(11)
<b>1. ONGC</b>	<b>1899.95</b>	<b>1672.96</b>	<b>1598.79</b>	<b>1788.92</b>	<b>20072.45</b>	<b>18848.84</b>	<b>19273.93</b>	<b>4.64</b>	<b>-2.21</b>	<b>-11.95</b>
<b>Onshore</b>	<b>487.35</b>	<b>491.97</b>	<b>466.81</b>	<b>519.85</b>	<b>5611.26</b>	<b>5569.63</b>	<b>5545.32</b>	<b>5.39</b>	<b>0.44</b>	<b>0.95</b>
Andhra Pradesh	19.55	15.36	21.05	17.07	238.25	185.79	262.29	-27.05	-29.17	-21.44
Assam ^	85.99	82.05	74.80	86.24	936.39	901.41	912.20	9.70	-1.18	-4.58
Gujarat	360.43	367.58	345.41	387.01	4174.28	4182.16	4096.07	6.42	2.10	1.98
Tamil Nadu	21.38	26.98	25.55	29.53	262.34	300.27	274.77	5.60	9.28	26.17
<b>Offshore</b>	<b>1412.60</b>	<b>1180.99</b>	<b>1131.98</b>	<b>1269.07</b>	<b>14461.19</b>	<b>13279.22</b>	<b>13728.61</b>	<b>4.33</b>	<b>-3.27</b>	<b>-16.40</b>
Eastern Offshore	1.40	1.17	1.83	1.61	16.70	18.24	16.40	-36.08	11.17	-16.31
Western Offshore	1272.20	1075.00	1016.75	1149.88	12982.24	11983.68	12347.49	5.73	-2.95	-15.50
Condensates	139.00	104.82	113.40	117.58	1462.26	1277.30	1364.72	-7.56	-6.41	-24.59
<b>2. OIL (Onshore)</b>	<b>276.56</b>	<b>240.26</b>	<b>243.68</b>	<b>257.55</b>	<b>3130.67</b>	<b>2852.55</b>	<b>3015.03</b>	<b>-1.41</b>	<b>-5.39</b>	<b>-13.13</b>
Assam	274.21	237.37	242.80	254.51	3107.73	2824.35	3005.40	-2.24	-6.02	-13.43
Arunachal Pradesh	2.18	2.19	0.65	2.16	20.92	20.95	7.12	238.27	194.22	0.69
Rajasthan (heavy oil)	0.17	0.69	0.24	0.88	2.01	7.24	2.51	194.55	188.22	297.55
<b>3. Private / JVC</b>	<b>714.13</b>	<b>486.29</b>	<b>721.25</b>	<b>650.30</b>	<b>8703.49</b>	<b>7770.46</b>	<b>9059.98</b>	<b>-32.58</b>	<b>-14.23</b>	<b>-31.90</b>
<b>Onshore</b>	<b>593.63</b>	<b>401.04</b>	<b>577.45</b>	<b>566.33</b>	<b>7176.13</b>	<b>6409.69</b>	<b>7315.94</b>	<b>-30.55</b>	<b>-12.39</b>	<b>-32.44</b>
Andhra Pradesh	6.29	4.11	0.83	4.52	74.89	37.02	10.47	398.42	253.59	-34.57
Arunachal Pradesh	2.34	2.38	2.52	2.69	28.76	29.76	31.22	-5.49	-4.69	1.71
Assam	6.54	1.89	3.31	1.76	55.27	28.29	30.83	-42.87	-8.23	-71.10
Gujarat	30.03	11.10	9.90	11.87	337.04	122.37	122.64	12.10	-0.22	-63.03
Rajasthan	539.69	374.79	553.82	538.33	6589.35	6111.98	7036.77	-32.33	-13.14	-30.56
Tamil Nadu	8.74	6.77	7.07	7.17	90.83	80.27	84.00	-4.28	-4.45	-22.52
<b>Offshore</b>	<b>120.50</b>	<b>85.25</b>	<b>143.80</b>	<b>83.97</b>	<b>1527.35</b>	<b>1360.77</b>	<b>1744.05</b>	<b>-40.72</b>	<b>-21.98</b>	<b>-29.25</b>
Eastern Offshore	31.43	48.16	45.61	40.67	437.33	467.21	584.71	5.58	-20.10	53.25
Gujarat Offshore	52.68	37.09	59.23	43.30	669.66	555.73	672.88	-37.37	-17.41	-29.59
Western Offshore	36.40	0.00	38.96	0.00	420.37	337.83	486.45	-	-30.55	-
<b>GRAND TOTAL (1+2+3)</b>	<b>2890.65</b>	<b>2399.51</b>	<b>2563.72</b>	<b>2696.77</b>	<b>31906.61</b>	<b>29471.85</b>	<b>31348.95</b>	<b>-6.41</b>	<b>-5.99</b>	<b>-16.99</b>
Onshore	1357.54	1133.27	1287.94	1343.73	15918.07	14831.86	15876.29	-12.01	-6.58	-16.52
Offshore	1533.10	1266.24	1275.78	1353.04	15988.55	14639.98	15472.66	-0.75	-5.38	-17.41

Note: Totals may not tally due to rounding off figures.

^: Includes crude oil production of Tripura

\*: Provisional. \*\*: Revised

Reasons for shortfall are indicated in the note.

MINISTRY OF PETROLEUM & NATURAL GAS

Annexure-II (Para-2)

Natural Gas Production during the month of February, 2020 and cumulatively for the period April-February, 2019-20 vis-à-vis April-February, 2018-19

(Figures in Million Cubic Meters)

Name of Undertaking/Unit/State	Planned production during the month	Production during the			Cumulative Production (April-February)			% variation over last year		% variation during the month under review over planned production
		Month under review *	Corresponding month of last year	Preceding month of current year **	Planned production during current year	Actual production during current year *	Actual production during corresponding period of last year	During the month under review	Upto the end of the period	
(1)	(2)	(3)	(4)	(5)	(6)	(7)	(8)	(9)	(10)	(11)
<b>1. ONGC</b>	<b>2184.13</b>	<b>1869.97</b>	<b>1953.74</b>	<b>2052.42</b>	<b>23488.80</b>	<b>21841.29</b>	<b>22539.76</b>	<b>-4.29</b>	<b>-3.10</b>	<b>-14.38</b>
<b>Onshore</b>	<b>498.24</b>	<b>381.38</b>	<b>439.36</b>	<b>429.45</b>	<b>5630.09</b>	<b>4778.31</b>	<b>5147.11</b>	<b>-13.20</b>	<b>-7.17</b>	<b>-23.45</b>
Andhra Pradesh	81.97	70.18	81.32	75.81	919.57	824.81	989.19	-13.69	-16.62	-14.38
Assam	48.16	34.85	36.82	36.77	523.88	423.90	442.93	-5.37	-4.30	-27.65
Gujarat	93.85	101.63	102.52	109.48	1116.30	1172.06	1218.64	-0.87	-3.82	8.28
Rajasthan	5.05	0.00	0.00	0.00	58.29	0.00	4.31	-	-	-
Tamil Nadu	122.46	84.09	91.07	94.29	1342.85	980.14	1083.12	-7.67	-9.51	-31.34
Tripura	146.74	90.64	127.64	113.10	1669.20	1377.39	1408.93	-28.98	-2.24	-38.23
<b>Offshore</b>	<b>1685.88</b>	<b>1488.59</b>	<b>1514.38</b>	<b>1622.97</b>	<b>17858.70</b>	<b>17062.98</b>	<b>17392.64</b>	<b>-1.70</b>	<b>-1.90</b>	<b>-11.70</b>
Eastern Offshore	95.10	44.89	105.47	55.69	1091.50	885.77	932.34	-57.44	-4.99	-52.80
Western Offshore	1590.78	1443.70	1408.90	1567.27	16767.20	16177.21	16460.31	2.47	-1.72	-9.25
<b>2. OIL</b>	<b>239.55</b>	<b>200.79</b>	<b>203.70</b>	<b>208.48</b>	<b>3037.94</b>	<b>2456.64</b>	<b>2486.78</b>	<b>-1.43</b>	<b>-1.21</b>	<b>-16.18</b>
Assam	221.54	176.52	183.14	184.77	2829.46	2193.44	2269.21	-3.62	-3.34	-20.32
Arunachal Pradesh	0.98	4.13	0.68	3.70	11.69	33.67	11.17	510.30	201.42	321.84
Rajasthan	17.04	20.13	19.88	20.00	196.79	229.52	206.40	1.26	11.20	18.18
<b>3. Private / JVC</b>	<b>396.80</b>	<b>269.76</b>	<b>408.31</b>	<b>347.44</b>	<b>4939.12</b>	<b>4471.49</b>	<b>5030.87</b>	<b>-33.93</b>	<b>-11.12</b>	<b>-32.02</b>
<b>Onshore</b>	<b>154.30</b>	<b>169.58</b>	<b>136.72</b>	<b>205.75</b>	<b>1910.70</b>	<b>1867.20</b>	<b>1535.83</b>	<b>24.04</b>	<b>21.58</b>	<b>9.90</b>
Andhra Pradesh	3.67	1.60	0.35	1.76	40.90	13.37	4.27	364.64	213.14	-56.33
Arunachal Pradesh	0.57	0.49	1.37	0.51	7.05	6.92	14.92	-64.19	-53.61	-14.31
Assam	38.26	17.85	30.60	16.54	400.62	282.06	290.31	-41.66	-2.84	-53.33
Gujarat	8.52	5.70	5.08	6.07	99.71	63.22	64.50	12.29	-1.98	-33.12
Rajasthan	100.09	141.26	97.26	178.08	1329.60	1473.75	1138.82	45.25	29.41	41.13
Tamil Nadu	3.19	2.67	2.07	2.79	32.82	27.88	23.01	29.13	21.16	-16.15
<b>CBM</b>	<b>99.76</b>	<b>56.37</b>	<b>55.74</b>	<b>55.63</b>	<b>963.05</b>	<b>597.08</b>	<b>652.36</b>	<b>1.14</b>	<b>-8.47</b>	<b>-43.49</b>
Jharkhand (CBM)	0.53	0.33	0.42	0.30	6.10	4.44	3.13	-19.95	41.99	-36.93
Madhya Pradesh (CBM)	55.70	28.68	26.99	29.42	498.70	315.15	327.20	6.28	-3.68	-48.50
West Bengal (CBM)	43.53	27.36	28.34	25.92	458.25	277.49	322.04	-3.45	-13.83	-37.15
<b>Offshore</b>	<b>142.74</b>	<b>43.80</b>	<b>215.85</b>	<b>86.06</b>	<b>2065.36</b>	<b>2007.21</b>	<b>2842.67</b>	<b>-79.71</b>	<b>-29.39</b>	<b>-69.31</b>
Eastern Offshore	31.63	34.90	87.36	76.54	773.73	849.31	1332.06	-60.05	-36.24	10.34
Gujarat Offshore	12.80	8.90	11.37	9.51	156.05	119.22	110.14	-21.69	8.24	-30.45
Western Offshore	98.31	0.00	117.13	0.00	1135.59	1038.69	1400.48	-	-25.83	-
<b>TOTAL (1+2+3)</b>	<b>2820.48</b>	<b>2340.51</b>	<b>2565.75</b>	<b>2608.34</b>	<b>31465.86</b>	<b>28769.42</b>	<b>30057.41</b>	<b>-8.78</b>	<b>-4.29</b>	<b>-17.02</b>
CBM	99.76	56.37	55.74	55.63	963.05	597.08	652.36	1.14	-8.47	-43.49
Onshore	892.10	751.75	779.78	843.68	10578.74	9102.14	9169.73	-3.60	-0.74	-15.73
Offshore	1828.62	1532.39	1730.23	1709.02	19924.07	19070.19	20235.32	-11.43	-5.76	-16.20

Note: Totals may not tally due to rounding off figures.

\*: Provisional. \*\*:Revised

CBM: Coal Bed Methane production.

Reasons for shortfall are indicated in the note.



MINISTRY OF PETROLEUM & NATURAL GAS

Annexure-III (Para-3)

Crude Oil Processed during the month of February, 2020 and cumulatively for the period April-February, 2019-20 vis-à-vis April-February, 2018-19

(Figures in Thousand Metric Tons)

Name of Undertaking/Unit	Planned production during the month	Production during the			Cumulative Production			% variation		% variation during the month under review over planned production
		Month under review *	Corresponding month of last year	Preceding month of current year **	(April-February)			During the month under review	Upto the end of the period	
					Planned production during current year**	Actual production during current year *	Actual production during corresponding period of last year			
(1)	(2)	(3)	(4)	(5)	(6)	(7)	(8)	(9)	(10)	(11)
<b>A. Public Sector</b>	<b>12626.06</b>	<b>12168.69</b>	<b>11939.71</b>	<b>12393.11</b>	<b>134279.88</b>	<b>132454.12</b>	<b>138221.71</b>	<b>1.92</b>	<b>-4.17</b>	<b>-3.62</b>
1. IOC, Guwahati	0.00	52.43	74.88	82.95	786.00	892.40	781.98	-29.98	14.12	-
2. IOC, Barauni	565.51	541.38	545.60	556.91	6199.35	6003.86	6065.45	-0.77	-1.02	-4.27
3. IOC, Gujarat	1232.50	1228.93	1074.67	1262.30	12182.88	11907.79	12523.93	14.35	-4.92	-0.29
4. IOC, Haldia	686.42	517.43	638.83	339.85	6515.92	5869.51	7255.55	-19.00	-19.10	-24.62
5. IOC, Mathura	797.00	747.48	772.38	430.70	8046.00	8164.84	8869.97	-3.22	-7.95	-6.21
6. IOC, Digboi	52.00	55.97	49.03	61.69	612.00	604.79	614.00	14.15	-1.50	7.63
7. IOC, Panipat	1327.75	1332.45	889.97	1395.11	14231.75	13822.52	14569.84	49.72	-5.13	0.35
8. IOC, Bongaigaon	232.00	90.34	214.33	108.32	2102.00	1910.18	2287.27	-57.85	-16.49	-61.06
9. IOC, Paradip	1290.15	1157.82	1260.13	1404.75	14520.68	14507.35	13188.19	-8.12	10.00	-10.26
<b>Total IOC</b>	<b>6183.32</b>	<b>5724.23</b>	<b>5519.81</b>	<b>5642.57</b>	<b>65196.58</b>	<b>63683.24</b>	<b>66156.17</b>	<b>3.70</b>	<b>-3.74</b>	<b>-7.42</b>
10. BPCL, Mumbai	1190.00	1290.66	1180.29	1373.07	13430.00	13678.55	13401.59	9.35	2.07	8.46
11. BPCL, Kochi	1320.00	1368.85	1341.68	1453.25	14775.00	15147.04	14628.80	2.02	3.54	3.70
<b>Total BPCL</b>	<b>2510.00</b>	<b>2659.50</b>	<b>2521.97</b>	<b>2826.33</b>	<b>28205.00</b>	<b>28825.59</b>	<b>28030.39</b>	<b>5.45</b>	<b>2.84</b>	<b>5.96</b>
12. HPCL, Mumbai	718.00	716.90	696.84	680.04	6519.00	7345.79	7900.34	2.88	-7.02	-0.15
13. HPCL, Visakh	777.00	798.29	769.17	830.86	8382.00	8319.64	8916.43	3.79	-6.69	2.74
<b>Total HPCL</b>	<b>1495.00</b>	<b>1515.18</b>	<b>1466.01</b>	<b>1510.90</b>	<b>14901.00</b>	<b>15665.44</b>	<b>16816.77</b>	<b>3.35</b>	<b>-6.85</b>	<b>1.35</b>
14. CPCL, Manali	870.00	735.33	872.33	946.86	9470.00	9307.45	9329.31	-15.70	-0.23	-15.48
15. CPCL, CBR	0.00	0.00	9.05	0.00	0.00	0.00	361.52	-	-	-
<b>Total CPCL</b>	<b>870.00</b>	<b>735.33</b>	<b>881.38</b>	<b>946.86</b>	<b>9470.00</b>	<b>9307.45</b>	<b>9690.82</b>	<b>-16.57</b>	<b>-3.96</b>	<b>-15.48</b>
16. NRL, Numaligarh	234.00	224.69	215.15	151.52	2540.70	2135.69	2654.29	4.44	-19.54	-3.98
17. MRPL, Mangalore	1330.00	1304.21	1328.34	1305.84	13925.00	12756.43	14815.04	-1.82	-13.90	-1.94
18. ONGC, Tatipaka	3.74	5.55	7.06	9.10	41.60	80.29	58.23	-21.43	37.90	48.10
<b>B. Joint Venture</b>	<b>1486.00</b>	<b>1680.43</b>	<b>1642.33</b>	<b>1807.39</b>	<b>17167.00</b>	<b>18456.91</b>	<b>16391.13</b>	<b>2.32</b>	<b>12.60</b>	<b>13.08</b>
19. BORL, Bina	620.00	652.22	635.53	706.46	7140.00	7179.70	5013.11	-0.55	43.22	5.20
20. HMEL, GGSR, Bhatinda	866.00	1028.21	1006.81	1100.93	10027.00	11277.21	11378.02	2.13	-0.89	18.73
<b>C. Private Sector</b>	<b>6501.38</b>	<b>7269.05</b>	<b>6501.38</b>	<b>7478.69</b>	<b>80096.59</b>	<b>82271.22</b>	<b>80096.59</b>	<b>11.81</b>	<b>2.72</b>	<b>11.81</b>
21. RIL, Jamnagar	1974.95	2880.93	1974.95	3076.99	28902.43	30004.65	28902.43	45.87	3.81	45.87
22. RIL, SEZ	2946.79	2786.85	2946.79	2649.64	34088.66	33365.40	34088.66	-5.43	-2.12	-5.43
<b>Total RIL</b>	<b>4921.74</b>	<b>5667.78</b>	<b>4921.74</b>	<b>5726.64</b>	<b>62991.09</b>	<b>63370.05</b>	<b>62991.09</b>	<b>15.16</b>	<b>0.60</b>	<b>15.16</b>
23. EOL, Vadinar	1579.65	1601.27	1579.65	1752.05	17105.50	18901.17	17105.50	1.37	10.50	1.37
<b>TOTAL(A+B+C)</b>	<b>20613.45</b>	<b>21118.17</b>	<b>20083.43</b>	<b>21679.19</b>	<b>231543.47</b>	<b>233182.24</b>	<b>234709.43</b>	<b>5.15</b>	<b>-0.65</b>	<b>2.45</b>

Note: 1. Totals may not tally due to rounding off figures. \*: Provisional. \*\*:Revised

2. CPCL CBR crude distillation unit under shutdown from 01.04.2019 for project activities.

Reasons for shortfall are indicated in the note.

MINISTRY OF PETROLEUM & NATURAL GAS

Annexure-IV (Para 3.4)

Refinery-wise Capacity Utilisation during the month of February, 2020 and cumulatively for the period April-February, 2019-20 vis-à-vis April-February, 2018-19

(Figures in Thousand Metric Tons)

Name of Undertaking/Unit	February, 2020			February, 2019			Cumulative (April - February)					
	Prorated Installed Capacity	Actual Crude T'put *	% Utilisation of Installed Capacity	Prorated Installed Capacity	Actual Crude T'put	% Utilisation of Installed Capacity	2019-20			2018-19		
							Prorated Installed Capacity	Actual Crude T'put *	% Utilisation of Installed Capacity	Prorated Installed Capacity	Actual Crude T'put	% Utilisation of Installed Capacity
(1)	(2)	(3)	(4)	(5)	(6)	(7)	(8)	(9)	(10)	(11)	(12)	(13)
<b>A. Public Sector</b>	<b>11287.00</b>	<b>12168.69</b>	<b>107.81</b>	<b>10898.00</b>	<b>11939.71</b>	<b>109.56</b>	<b>130033.00</b>	<b>132454.12</b>	<b>101.86</b>	<b>130000.00</b>	<b>138221.71</b>	<b>106.32</b>
1. IOC, Guwahati	79.00	52.43	66.36	77.00	74.88	97.25	915.00	892.40	97.53	915.00	781.98	85.46
2. IOC, Barauni	477.00	541.38	113.50	460.00	545.60	118.61	5492.00	6003.86	109.32	5490.00	6065.45	110.48
3. IOC, Gujarat	1088.00	1228.93	112.95	1051.00	1074.67	102.25	12540.00	11907.79	94.96	12536.00	12523.93	99.90
4. IOC, Haldia	596.00	517.43	86.82	575.00	638.83	111.10	6865.00	5869.51	85.50	6863.00	7255.55	105.72
5. IOC, Mathura	636.00	747.48	117.53	614.00	772.38	125.79	7322.00	8164.84	111.51	7321.00	8869.97	121.16
6. IOC, Digboi	52.00	55.97	107.63	50.00	49.03	98.07	595.00	604.79	101.65	595.00	614.00	103.19
7. IOC, Panipat	1192.00	1332.45	111.78	1151.00	889.97	77.32	13730.00	13822.52	100.67	13726.00	14569.84	106.15
8. IOC, Bongaigaon	187.00	90.34	48.31	180.00	214.33	119.07	2151.00	1910.18	88.80	2150.00	2287.27	106.38
9. IOC, Paradip	1192.00	1157.82	97.13	1151.00	1260.13	0.00	13730.00	14507.35	105.66	13726.00	13188.19	0.00
<b>Total IOC</b>	<b>5498.00</b>	<b>5724.23</b>	<b>104.11</b>	<b>5308.00</b>	<b>5519.81</b>	<b>103.99</b>	<b>63339.00</b>	<b>63683.24</b>	<b>100.54</b>	<b>63323.00</b>	<b>66156.17</b>	<b>104.47</b>
10. BPCL, Mumbai	953.00	1290.66	135.43	921.00	1180.29	128.15	10984.00	13678.55	124.53	10981.00	13401.59	122.04
11. BPCL, Kochi	1232.00	1368.85	111.11	1189.00	1341.68	112.84	14187.00	15147.04	106.77	14184.00	14628.80	103.14
<b>Total BPCL</b>	<b>2185.00</b>	<b>2659.50</b>	<b>121.72</b>	<b>2110.00</b>	<b>2521.97</b>	<b>119.52</b>	<b>25171.00</b>	<b>28825.59</b>	<b>114.52</b>	<b>25164.00</b>	<b>28030.39</b>	<b>111.39</b>
12. HPCL, Mumbai	596.00	716.90	120.28	575.00	696.84	121.19	6865.00	7345.79	107.00	6863.00	7900.34	115.11
13. HPCL, Visakh	659.00	798.29	121.14	637.00	769.17	120.75	7597.00	8319.64	109.51	7595.00	8916.43	117.40
<b>Total HPCL</b>	<b>1255.00</b>	<b>1515.18</b>	<b>120.73</b>	<b>1212.00</b>	<b>1466.01</b>	<b>120.96</b>	<b>14462.00</b>	<b>15665.44</b>	<b>108.32</b>	<b>14458.00</b>	<b>16816.77</b>	<b>116.31</b>
14. CPCL, Manali	834.00	735.33	88.17	805.00	872.33	108.36	9611.00	9307.45	96.84	9608.00	9329.31	97.10
15. CPCL, CBR	79.00	0.00	0.00	77.00	9.05	11.76	915.00	0.00	0.00	915.00	361.52	39.51
<b>Total CPCL</b>	<b>914.00</b>	<b>735.33</b>	<b>80.45</b>	<b>882.00</b>	<b>881.38</b>	<b>99.93</b>	<b>10526.00</b>	<b>9307.45</b>	<b>88.42</b>	<b>10523.00</b>	<b>9690.82</b>	<b>92.09</b>
16. NRL, Numaligarh	238.00	224.69	94.41	230.00	215.15	93.54	2746.00	2135.69	77.77	2745.00	2654.29	96.70
17. MRPL, Mangalore	1192.00	1304.21	109.41	1151.00	1328.34	115.41	13730.00	12756.43	92.91	13726.00	14815.04	107.93
18. ONGC, Tatipaka	5.00	5.55	110.90	5.00	7.06	141.14	60.00	80.29	133.82	60.00	58.23	97.04
<b>B. Joint Venture</b>	<b>1518.00</b>	<b>1680.43</b>	<b>110.70</b>	<b>1327.00</b>	<b>1642.33</b>	<b>123.76</b>	<b>17482.00</b>	<b>18456.91</b>	<b>105.58</b>	<b>15831.00</b>	<b>16391.13</b>	<b>103.54</b>
19. BORL, Bina	620.00	652.22	105.20	460.00	635.53	138.16	7139.00	7179.70	100.57	5490.00	5013.11	91.31
20. HMEL, GGSR, Bhatinda	898.00	1028.21	114.50	867.00	1006.81	116.13	10343.00	11277.21	109.03	10340.00	11378.02	110.04
<b>C. Private Sector</b>	<b>7008.00</b>	<b>7269.05</b>	<b>103.73</b>	<b>6766.00</b>	<b>6501.38</b>	<b>96.09</b>	<b>80730.00</b>	<b>82271.22</b>	<b>101.91</b>	<b>80709.00</b>	<b>80096.59</b>	<b>99.24</b>
21. RIL, Jamnagar	2622.00	2880.93	109.88	2532.00	1974.95	78.00	30205.00	30004.65	99.34	30197.00	28902.43	95.71
22. RIL, SEZ	2797.00	2786.85	99.64	2700.00	2946.79	109.14	32219.00	33365.40	103.56	32210.00	34088.66	105.83
<b>Total RIL</b>	<b>5419.00</b>	<b>5667.78</b>	<b>104.59</b>	<b>5232.00</b>	<b>4921.74</b>	<b>94.07</b>	<b>62423.00</b>	<b>63370.05</b>	<b>101.52</b>	<b>62408.00</b>	<b>62991.09</b>	<b>100.93</b>
23. EOL, Vadinar	1589.00	1601.27	100.77	1534.00	1579.65	102.98	18306.00	18901.17	103.25	18301.00	17105.50	93.47
<b>TOTAL(A+B+C)</b>	<b>19813.00</b>	<b>21118.17</b>	<b>106.59</b>	<b>18991.00</b>	<b>20083.43</b>	<b>105.75</b>	<b>228245.00</b>	<b>233182.24</b>	<b>102.16</b>	<b>226540.00</b>	<b>234709.43</b>	<b>103.61</b>

Note: Crude thruput in terms of crude oil processed. \*: Provisional. \*\*: Revised

MINISTRY OF PETROLEUM & NATURAL GAS

Annexure-V (Para 3.4)

Production of Petroleum Products during the month of February, 2020 and cumulatively for the period April-February, 2019-20 vis-à-vis April-February, 2018-19

(Figures in Thousand Metric Tons)

Name of Undertaking/Unit	Planned production during the month	Production during the			Cumulative Production			% variation over last year		% variation during the month under review over planned production
		Month under review *	Corresponding month of last year	Preceding month of current year **	(April-February)			During the month under review	Upto the end of the period	
(1)	(2)	(3)	(4)	(5)	(6)	(7)	(8)	(9)	(10)	(11)
<b>A. Public Sector</b>	<b>11955.14</b>	<b>11691.12</b>	<b>11330.51</b>	<b>11777.85</b>	<b>126570.12</b>	<b>125255.46</b>	<b>131060.14</b>	<b>3.18</b>	<b>-4.43</b>	<b>-2.21</b>
1. IOC, Guwahati	0.00	78.45	74.98	107.15	802.45	1102.72	939.86	4.62	17.33	-
2. IOC, Barauni	510.24	526.70	506.74	555.68	5693.51	5564.78	5702.87	3.94	-2.42	3.22
3. IOC, Gujarat	1179.13	1245.60	1066.99	1287.86	11657.86	11398.36	11947.06	16.74	-4.59	5.64
4. IOC, Haldia	646.66	468.24	604.66	309.32	5976.21	5367.47	6778.17	-22.56	-20.81	-27.59
5. IOC, Mathura	794.35	793.41	751.84	406.23	7772.17	7997.03	8702.63	5.53	-8.11	-0.12
6. IOC, Digboi	60.86	57.48	45.68	62.09	751.64	602.30	614.69	25.82	-2.02	-5.56
7. IOC, Panipat	1347.26	1385.34	987.02	1432.40	14343.24	14076.39	15074.38	40.36	-6.62	2.83
8. IOC, Bongaigaon	216.53	71.13	200.57	77.71	1940.04	1745.20	2123.88	-64.54	-17.83	-67.15
9. IOC, Paradip	1182.29	1036.14	1155.51	1256.04	13263.64	13086.47	11941.62	-10.33	9.59	-12.36
<b>Total IOC</b>	<b>5937.32</b>	<b>5662.47</b>	<b>5394.00</b>	<b>5494.48</b>	<b>62200.75</b>	<b>60940.73</b>	<b>63825.16</b>	<b>4.98</b>	<b>-4.52</b>	<b>-4.63</b>
10. BPCL, Mumbai	1143.00	1262.42	1132.01	1342.87	12873.00	13213.47	12871.46	11.52	2.66	10.45
11. BPCL, Kochi	1241.34	1280.71	1270.75	1419.74	13831.68	14326.18	13690.79	0.78	4.64	3.17
<b>Total BPCL</b>	<b>2384.34</b>	<b>2543.13</b>	<b>2402.75</b>	<b>2762.61</b>	<b>26704.68</b>	<b>27539.65</b>	<b>26562.25</b>	<b>5.84</b>	<b>3.68</b>	<b>6.66</b>
12. HPCL, Mumbai	681.00	688.39	646.05	624.29	6164.00	6991.75	7459.97	6.55	-6.28	1.09
13. HPCL, Visakh	719.00	729.71	727.15	742.00	7751.00	7576.36	8301.36	0.35	-8.73	1.49
<b>Total HPCL</b>	<b>1400.00</b>	<b>1418.10</b>	<b>1373.20</b>	<b>1366.29</b>	<b>13915.00</b>	<b>14568.11</b>	<b>15761.33</b>	<b>3.27</b>	<b>-7.57</b>	<b>1.29</b>
14. CPCL, Manali	785.34	686.72	766.00	863.87	8531.33	8533.15	8392.84	-10.35	1.67	-12.56
15. CPCL, CBR	0.00	0.00	9.70	0.00	0.00	0.88	363.85	-	-	-
<b>Total CPCL</b>	<b>785.34</b>	<b>686.72</b>	<b>775.70</b>	<b>863.87</b>	<b>8531.33</b>	<b>8534.03</b>	<b>8756.69</b>	<b>-11.47</b>	<b>-2.54</b>	<b>-12.56</b>
16. NRL, Numaligarh	229.41	217.37	217.92	130.83	2491.01	2050.40	2634.64	-0.26	-22.18	-5.25
17. MRPL, Mangalore	1215.13	1158.20	1160.29	1152.48	12687.36	11548.59	13464.51	-0.18	-14.23	-4.68
18. ONGC, Tatipaka	3.60	5.14	6.66	7.29	40.00	73.95	55.56	-22.82	33.11	42.67
<b>B. Joint Venture</b>	<b>1367.26</b>	<b>1534.63</b>	<b>1432.23</b>	<b>1684.08</b>	<b>15780.22</b>	<b>17208.82</b>	<b>15243.59</b>	<b>7.15</b>	<b>12.89</b>	<b>12.24</b>
19. BORL, Bina	552.26	601.74	574.09	645.25	6355.22	6560.55	4480.62	4.82	46.42	8.96
20. HMEL, GGSR, Bhatinda	815.00	932.89	858.14	1038.83	9425.00	10648.27	10762.98	8.71	-1.07	14.46
<b>C. Private Sector</b>	<b>7174.71</b>	<b>8211.58</b>	<b>7174.71</b>	<b>8897.23</b>	<b>88558.24</b>	<b>93205.01</b>	<b>88558.24</b>	<b>14.45</b>	<b>5.25</b>	<b>14.45</b>
21. RIL, Jamnagar	2034.95	2918.90	2034.95	3249.80	30357.56	31786.99	30357.56	43.44	4.71	43.44
22. RIL, SEZ	3549.98	3758.70	3549.98	3908.52	41726.11	43284.60	41726.11	5.88	3.74	5.88
<b>Total RIL</b>	<b>5584.92</b>	<b>6677.60</b>	<b>5584.92</b>	<b>7158.33</b>	<b>72083.67</b>	<b>75071.58</b>	<b>72083.67</b>	<b>19.56</b>	<b>4.15</b>	<b>19.56</b>
23. EOL, Vadinar	1589.78	1533.98	1589.78	1738.90	16474.56	18133.42	16474.56	-3.51	10.07	-3.51
<b>TOTAL REFINERY (A+B+C)</b>	<b>20497.11</b>	<b>21437.32</b>	<b>19937.45</b>	<b>22359.16</b>	<b>230908.58</b>	<b>235669.28</b>	<b>234861.97</b>	<b>7.52</b>	<b>0.34</b>	<b>4.59</b>
ONGC	263.08	280.82	281.51	293.44	3064.49	3179.61	3251.75	-0.24	-2.22	6.74
GAIL	98.84	100.34	98.78	97.58	1115.28	1161.13	1200.78	1.58	-3.30	1.51
OIL	3.05	2.76	2.87	2.99	30.75	26.24	30.43	-3.90	-13.76	-9.48
<b>D. Total Fractionators</b>	<b>364.97</b>	<b>383.91</b>	<b>383.16</b>	<b>394.01</b>	<b>4210.52</b>	<b>4366.98</b>	<b>4482.96</b>	<b>0.20</b>	<b>-2.59</b>	<b>5.19</b>
<b>Grand Total (A+B+C+D)</b>	<b>20862.08</b>	<b>21821.24</b>	<b>20320.61</b>	<b>22753.18</b>	<b>235119.10</b>	<b>240036.26</b>	<b>239344.92</b>	<b>7.38</b>	<b>0.29</b>	<b>4.60</b>

Note: Totals may not tally due to rounding off figures. \*: Provisional. \*\*: Revised