

Government of India
Ministry of Petroleum and Natural Gas
Economic & Statistics Division

New Delhi
Dated the 22nd February, 2019

Monthly Production Report
January, 2019

1. Crude Oil

Crude oil production¹ during January, 2019 was 2847.66 TMT which is 11.85% lower than target and 4.33% lower when compared with January, 2018. Cumulative crude oil production during April-January, 2018-19 was 28785.26 TMT which is 6.46% and 3.76% lower than the cumulative target and production respectively during the corresponding period of last year. Unit-wise and State-wise crude oil production is given at **Annexure-I**. Unit-wise crude oil production for the month of January, 2019 and cumulatively for the period April-January, 2018-19 vis-à-vis same period of last year has been shown in Table-1 and month-wise in Figure-1.

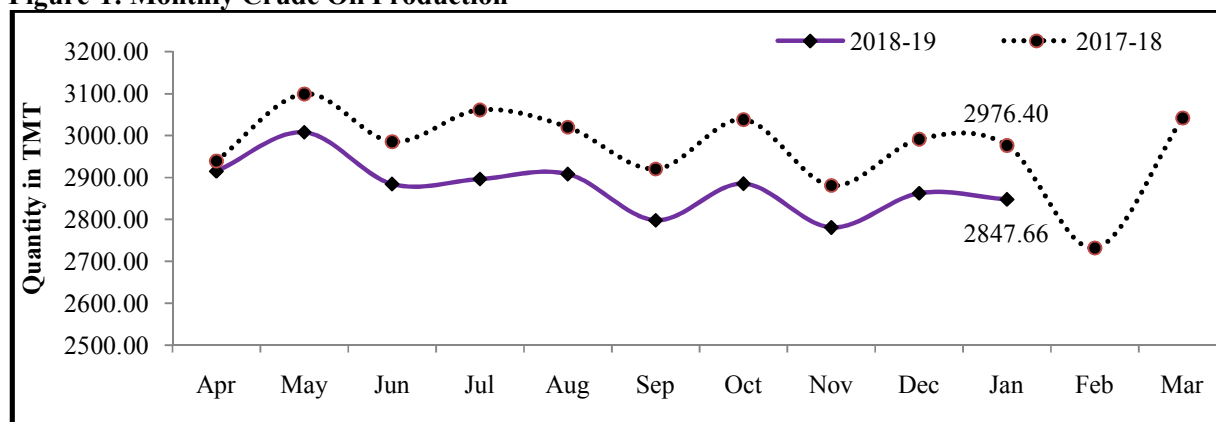
Table-1: Crude Oil Production (in TMT)

Oil Company	Target	January (Month)				April-January (Cumulative)			
	2018-19 (Apr-Mar)	2018-19		2017-18	% over last year	2018-19		2017-18	% over last year
		Target	Prod.*	Prod.		Target	Prod.*	Prod.	
ONGC	23040.00	2018.62	1766.98	1836.79	96.20	19110.93	17675.14	18685.49	94.59
OIL	3738.00	332.47	254.79	285.40	89.27	3092.72	2771.38	2834.26	97.78
PSC Fields	10233.60	879.23	825.90	854.21	96.69	8568.64	8338.73	8391.46	99.37
Total	37011.60	3230.32	2847.66	2976.40	95.67	30772.30	28785.26	29911.21	96.24

Note: Totals may not tally due to rounding off.

*: Provisional

Figure-1: Monthly Crude Oil Production



¹Including condensate

Unit-wise production details with reasons for shortfall are as under:

1.1 Crude oil production by **ONGC** during January, 2019 was 1766.98 TMT which is 12.47% lower than the monthly target and 3.80% lower when compared with January, 2018. Cumulative crude oil production by ONGC during April-January, 2018-19 was 17675.14 TMT which is 7.51% and 5.41% lower than the cumulative target and production respectively during the corresponding period of last year. Reasons for shortfall are as under:

- Loss from WO-16 and B-127 fields in the absence of MOPUs Sagar Samrat and Sagar Laxmi.
- Electric submersible pump (ESP) problem in wells of NB Prasad (NBP) field.
- Sub-sea leakage in some well fluid lines of Mumbai High & Neelam Heera Asset, leading to flow restriction.

1.2 Crude oil production by **OIL** during January, 2019 was 254.79 TMT which is 23.37% lower than monthly target and 10.73% lower when compared with January, 2018. Cumulative crude oil production by OIL during April-January, 2018-19 was 2771.38 TMT which is 10.39% and 2.22% lower than the cumulative target and production respectively during the corresponding period of last year. Reasons for shortfall are as under:

- Environmental loss (Bandh and miscreant activities)
- Less than planned contribution from work over well and drilling wells.

1.3 Crude oil production by **Pvt/JVs** in PSC regime during January, 2019 was 825.90 TMT which is 6.07% lower than the monthly target and 3.31% lower than January, 2018. Cumulative crude oil production by Pvt/JVs during April-January, 2018-19 was 8338.73 TMT which is 2.68% and 0.63% lower than the cumulative target and production respectively during the corresponding period of last year. Major reasons in for lower production are;

- Major deficit in production is from Mangala due to delay in Mangala Processing Terminal (MPT) Upgrade and 45 infills and NE field development drilling campaign delivered less than expected yield (CEIL)
- Decline in production from Stage-I wells and delay in Stage-II wells in the Aishwarya Barmer Hill (ABH) field (CEIL).
- Around 65 oil wells are closed due to various reasons like high water cut, require Work-over-Job (WOJ), etc. and 30 Mangala wells are closed due to liquid handling constraint at MPT plant (CEIL).

2. Natural Gas

Natural gas production during January, 2019 was 2841.45 MMSCM which is 8.75% lower than the target for the month but 5.43% higher when compared with January, 2018. Cumulative

natural gas production during April-January, 2018-19 was 27491.66 MMSCM which is 7.42% lower than target for the period but 0.4% higher when compared with the production during corresponding period of last year. Unit-wise and state-wise natural gas production is given at **Annexure-II**. Unit-wise natural gas production for the month of January, 2019 and cumulatively for the period April-January, 2018-19 vis-à-vis same period of last year has been shown in Table-2 and month-wise in Figure-2.

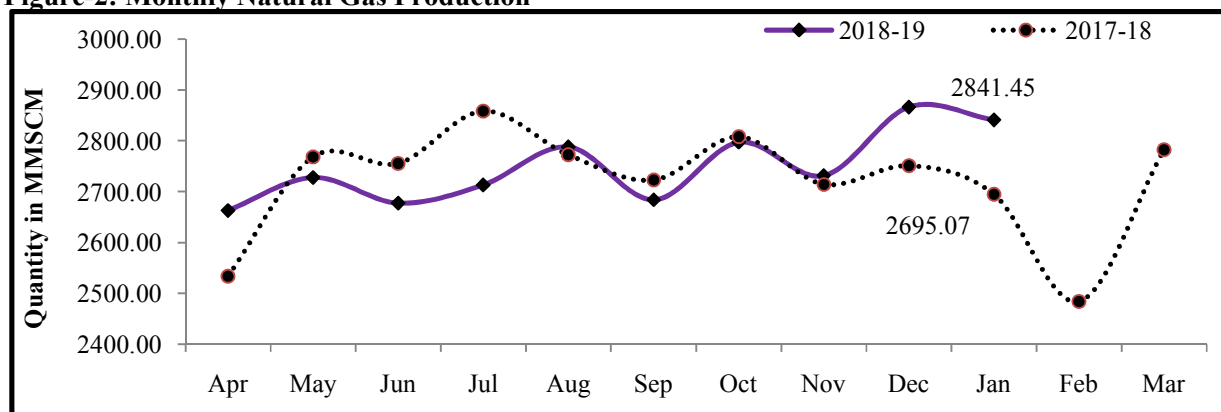
Table-2: Natural Gas Production (MMSCM)

Oil Company	Target	January (Month)			April-January (Cumulative)				
	2018-19 (Apr-Mar)	2018-19		2017-18	2018-19		2017-18	% over last year	
		Target	Prod.*	Prod.	Target	Prod.*	Prod.		
ONGC	25981.00	2265.23	2169.76	1964.67	110.44	21699.48	20586.02	19615.84	104.95
OIL	3120.00	247.60	222.29	238.46	93.22	2635.79	2283.08	2435.44	93.74
PSC Fields	6498.11	601.19	449.40	491.95	91.35	5359.31	4622.56	5331.31	86.71
Total	35599.11	3114.02	2841.45	2695.07	105.43	29694.58	27491.66	27382.59	100.40

Note: Totals may not tally due to rounding off.

*: Provisional

Figure-2: Monthly Natural Gas Production



2.1 Natural gas production by **ONGC** during January, 2019 was 2169.76 MMSCM which is 4.21% lower than the monthly target but 10.44% higher when compared with January, 2018. Cumulative natural gas production by ONGC during April-January, 2018-19 was 20586.02 MMSCM which is 5.13% lower than the cumulative target but 4.95% higher than the production during the corresponding period of the last year. Some of the reasons for shortfall against monthly target are as under:

- Pressure/ potential decline in GS-4 Gas cap reservoir in Gandhar field.
- Less off take by consumers/ grid restrictions/ shut downs in Tripura

2.2 Natural gas production by **OIL** during January, 2019 was 222.29 MMSCM which is 10.22% lower than the monthly target and 6.78% lower than January, 2018. Cumulative natural gas production by OIL during April-January, 2018-19 was 2283.08 MMSCM which is 13.38% and

6.26% lower than the cumulative target and production respectively during the corresponding period of last year. Reasons for shortfall are as under:

- Loss of potential in Deohal area due to presence of CO₂ in production stream.
- Environmental loss (Bandh and miscreant activities).

2.3 Natural gas production by **Pvt/JVs** during January, 2019 was 449.40 MMSCM which is 25.25% lower than the monthly target and 8.65% lower when compared with January, 2018. Cumulative natural gas production by Pvt/JVs during April-January, 2018-19 was 4622.56 MMSCM which is 13.75% lower than the cumulative target and 13.29% lower than the production during the corresponding period of last year. Reasons for shortfall in production are as under:

- Sohagpur West CBM Block: Performance of CBM wells not as per expectation. Production impacted due to the constraint imposed by IFFCO on CBM. (RIL)
- RJ-ON/6: Less offtake by buyer and low gas production due to stuck up in two wells. (FEL)
- Raniganj East CBM Block: Few wells closed for planned maintenance and refrac jobs. Major customer 'Matix' operational shutdown. (ESSAR)

3. Refinery Production (in terms of crude oil processed)

Refinery production during January, 2019 was 21944.86 TMT which is marginally higher by 0.06% than the target for the month but 3.62% lower when compared with January, 2018. Cumulative production during April-January, 2018-19 was 214626.0 TMT which is 0.9% and 1.85% higher than the cumulative target and production respectively during the corresponding period of last year. Unit-wise production is given at **Annexure-III**. Company-wise production for the month of January, 2019 and cumulatively for the period April-January, 2018-19 vis-à-vis same period of last year has been shown in Table-3 and month-wise in Figure-3.

Figure 3: Monthly Refinery Production

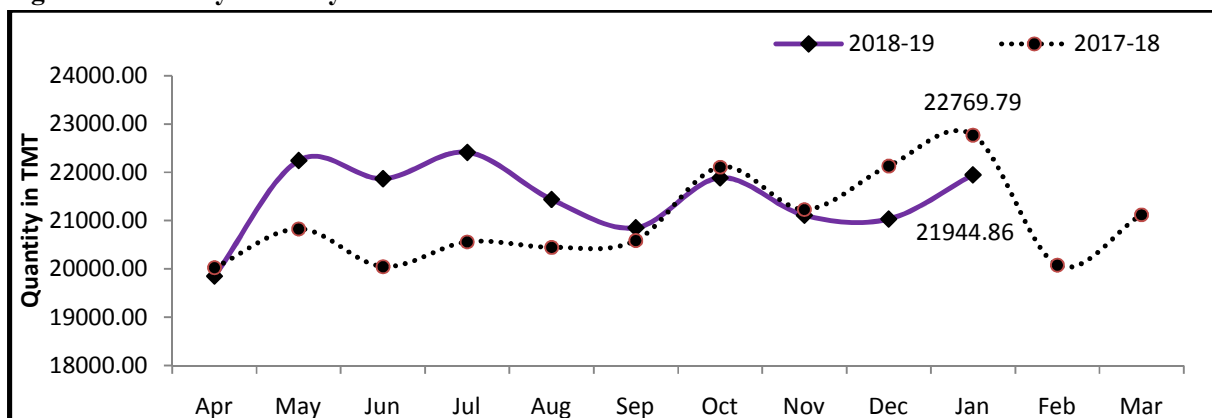


Table 3: Refinery Production (TMT)

Oil Company	Target	January (Month)				April-January (Cumulative)			
	2018-19 (Apr-Mar)	2018-19		2017-18	% over last year	2018-19		2017-18	% over last year
		Target	Prod.*	Prod.		Target	Prod.*	Prod.	
CPSE	147759	12411.21	13144.64	13160.93	99.88	123862.38	126282.00	121220.34	104.18
IOCL	71150	5668.66	6171.76	6208.92	99.40	59815.63	60636.36	58057.86	104.44
BPCL	29000	2560.60	2753.47	2677.78	102.83	24250.81	25508.42	23118.89	110.34
HPCL	18000	1554.71	1508.65	1571.21	96.02	15042.72	15350.76	15217.43	100.88
CPCL	10500	930.00	1003.96	970.22	103.48	8890.00	8809.45	8946.37	98.47
NRL	2850	242.05	240.00	250.70	95.73	2389.32	2439.15	2385.84	102.23
MRPL	16200	1450.00	1459.31	1475.36	98.91	13425.00	13486.70	13427.09	100.44
ONGC	59	5.18	7.50	6.74	111.26	48.90	51.17	66.86	76.53
JVs	17240	1581.00	1679.39	1615.36	103.96	14204.00	14748.79	12557.81	117.45
BORL	6400	660.00	717.78	600.20	119.59	5120.00	4377.58	5638.02	77.64
HMEL	10840	921.00	961.61	1015.17	94.72	9084.00	10371.22	6919.80	149.88
Private	88896	7939.23	7120.83	7993.50	89.08	74636.20	73595.21	76955.48	95.63
RIL	70470	6223.23	5414.77	6223.23	87.01	59642.20	58069.35	59642.20	97.36
NEL	18426	1716.00	1706.06	1770.27	96.37	14994.00	15525.86	17313.28	89.68
TOTAL	253895	21931.44	21944.86	22769.79	96.38	212702.58	214626.00	210733.63	101.85

Note: Totals may not tally due to rounding off.

*: Provisional

3.1 **CPSE Refineries' production** during January, 2019 was 13144.64 TMT which is 5.91% higher than the monthly target but 0.12% lower when compared with January, 2018. Cumulative production by CPSE refineries during April-January, 2018-19 was 126282.0 TMT which is 1.95% and 4.18% higher than the cumulative target and production respectively during the corresponding period of last year. Reasons for shortfall of refinery production in some CPSE refineries are as under:

- IOCL-Guwahati: Lower due to Crude Distillation Unit (CDU) idling for extended Steam Air Decoking (SAD) shutdown in Delayed Coker Unit.
- IOCL-Haldia: Lower due to CDU idling for once through Hydrocracker Unit.
- HPCL-Mumbai: Unplanned shutdown of primary processing unit.

3.2 **Production in JV refineries** during January, 2019 was 1679.39 TMT which is 6.22% higher than the target for the month and 3.96% higher when compared with January, 2018. Cumulative production by JVs refineries during April-January, 2018-19 was 14748.79 TMT which is 3.84% and 17.45% higher than the cumulative target and production respectively during the corresponding period of last year.

3.3 **Production in private refineries** during January, 2019 was 7120.83 TMT which is lower by 10.31% than the target for the month and 10.92% lower when compared with January, 2018. Cumulative production by private refineries during April-January, 2018-19 was 73595.21 TMT which is 1.39% and 4.37% lower than the cumulative target and production respectively during the corresponding period of last year.

3.4 Refinery-wise details of the capacity utilization and production of petroleum products during the month of January, 2018 and cumulatively for the period April-January, 2018 vis-à-vis April-January, 2017 are given at **Annexures - IV and V** respectively.

MINISTRY OF PETROLEUM & NATURAL GAS

Annexure-I (Para 1)

Crude Oil Production during the month of January, 2019 and cumulatively for the period April-January, 2018-19 vis-à-vis April-January, 2017-18

(Qty: '000' Tonnes)

Name of Undertaking/Unit/State	Planned production during the month*	Production during the			Cumulative Production			% variation over last year		% variation during the month under review over planned production
		Month under review *	Corresponding month of last year **	Preceding month of current year **	(April-January)			During the month under review	Upto the end of the period	
					Planned production during current year*	Actual production during current year *	Actual production during corresponding period of last year **			
(1)	(2)	(3)	(4)	(5)	(6)	(7)	(8)	(9)	(10)	(11)
1. ONGC	2018.62	1766.98	1836.79	1761.22	19110.93	17675.14	18685.49	-3.80	-5.41	-12.47
Onshore	525.32	510.91	506.89	512.19	5128.07	5078.51	5031.32	0.79	0.94	-2.74
Andhra Pradesh	23.99	23.82	23.60	23.73	273.34	241.24	272.54	0.97	-11.49	-0.71
Assam ^	93.62	84.25	81.05	85.84	873.68	837.40	816.53	3.95	2.56	-10.00
Gujarat	388.51	375.27	380.16	376.76	3796.53	3750.66	3723.65	-1.29	0.73	-3.41
Tamil Nadu	19.20	27.56	22.08	25.86	184.51	249.22	218.60	24.85	14.01	43.56
Offshore	1493.30	1256.07	1329.91	1249.04	13982.86	12596.63	13654.17	-5.55	-7.75	-15.89
Eastern Offshore	0.66	2.06	0.60	1.81	6.95	14.58	6.95	240.89	109.71	211.29
Western Offshore	1365.28	1127.22	1211.95	1114.65	12789.07	11330.73	12449.58	-6.99	-8.99	-17.44
Condensates	127.35	126.79	117.35	132.58	1186.84	1251.32	1197.63	8.04	4.48	-0.44
2. OIL (Onshore)	332.47	254.79	285.40	274.96	3092.72	2771.38	2834.26	-10.73	-2.22	-23.37
Assam	331.25	253.80	284.69	273.77	3084.09	2762.60	2826.66	-10.85	-2.27	-23.38
Arunachal Pradesh	1.04	0.68	0.59	0.77	6.79	6.47	6.24	15.54	3.77	-34.17
Rajsthan (heavy oil)	0.19	0.30	0.12	0.42	1.84	2.31	1.37	158.97	68.41	62.16
3. Private / JVC	879.23	825.90	854.21	826.17	8568.64	8338.73	8391.46	-3.31	-0.63	-6.07
Onshore	752.27	662.81	699.46	653.84	7162.63	6738.49	6801.90	-5.24	-0.93	-11.89
Andhra Pradesh	10.80	0.76	0.00	0.64	46.31	9.64	0.00	380.22	0.00	-92.95
Arunachal Pradesh	3.93	2.72	3.52	2.70	37.25	28.71	36.58	-22.58	-21.52	-30.78
Assam	3.53	3.25	0.52	3.34	34.88	27.52	1.66	26.75	-	-7.95
Gujarat	39.99	10.76	12.51	10.60	193.65	112.73	115.72	-14.00	-2.58	-73.09
Rajasthan	683.59	637.10	676.06	628.50	6747.66	6482.96	6577.62	-5.76	-1.44	-6.80
Tamil Nadu	10.42	8.21	6.85	8.06	102.87	76.93	70.32	19.83	9.41	-21.26
Offshore	126.96	163.09	154.75	172.32	1406.01	1600.24	1589.55	5.39	0.67	28.45
Eastern Offshore	43.95	48.89	66.56	55.02	499.74	539.10	696.13	-26.55	-22.56	11.22
Gujarat Offshore	42.91	69.19	31.55	70.36	463.72	613.66	316.56	119.28	93.85	61.26
Western Offshore	40.10	45.01	56.64	46.95	442.55	447.49	576.86	-20.54	-22.43	12.24
GRAND TOTAL (1+2+3)	3230.32	2847.66	2976.40	2862.35	30772.30	28785.26	29911.21	-4.33	-3.76	-11.85
Onshore	1610.06	1428.50	1491.74	1440.99	15383.43	14588.38	14667.48	-4.24	-0.54	-11.28
Offshore	1620.26	1419.16	1484.66	1421.36	15388.87	14196.88	15243.72	-4.41	-6.87	-12.41

Note: Totals may not tally due to rounding off figures.

^: Includes crude oil production of Tripura

*: Provisional. **: Revised

Reasons for shortfall are indicated in the note.

MINISTRY OF PETROLEUM & NATURAL GAS

Annexure-II (Para 2)

Natural Gas Production during the month of January, 2019 and cumulatively for the period April-January, 2018-19 vis-à-vis April-January, 2017-18

(Qty: Million Cubic Meters)

Name of Undertaking/Unit/State	Planned production during the month*	Production during the			Cumulative Production (April-January)			% variation over last year		% variation during the month under review over planned production
		Month under review *	Corresponding month of last year **	Preceding month of current year **	Planned production during current year*	Actual production during current year *	Actual production during corresponding period of last year **	During the month under review	Upto the end of the period	
(1)	(2)	(3)	(4)	(5)	(6)	(7)	(8)	(9)	(10)	(11)
1. ONGC	2265.23	2169.76	1964.67	2196.99	21699.48	20586.02	19615.84	10.44	4.95	-4.21
Onshore	492.48	480.06	479.92	486.85	4883.02	4707.75	4710.58	0.03	-0.06	-2.52
Andhra Pradesh	86.12	91.49	84.27	91.68	899.94	907.87	773.82	8.58	17.32	6.24
Assam	43.51	39.71	42.99	39.10	406.14	406.10	426.26	-7.62	-4.73	-8.72
Gujarat	122.58	111.79	124.99	113.91	1269.54	1116.12	1306.93	-10.56	-14.60	-8.80
Rajasthan	0.48	0.00	0.61	0.00	4.70	4.31	4.14	-	3.96	-
Tamil Nadu	96.96	100.07	102.20	99.47	969.23	992.05	997.27	-2.09	-0.52	3.21
Tripura	142.84	136.99	124.87	142.69	1333.47	1281.29	1202.15	9.71	6.58	-4.10
Offshore	1772.74	1689.71	1484.75	1710.14	16816.46	15878.27	14905.26	13.80	6.53	-4.68
Eastern Offshore	179.80	121.75	42.80	125.74	1693.55	826.86	467.93	184.47	76.71	-32.29
Western Offshore	1592.94	1567.96	1441.95	1584.41	15122.91	15051.40	14437.33	8.74	4.25	-1.57
2. OIL	247.60	222.29	238.46	232.65	2635.79	2283.08	2435.44	-6.78	-6.26	-10.22
Assam	228.26	200.05	217.47	211.11	2444.84	2086.06	2248.63	-8.01	-7.23	-12.36
Arunachal Pradesh	1.09	0.62	0.97	0.37	10.71	10.49	9.71	-36.23	8.04	-43.23
Rajasthan	18.26	21.62	20.02	21.17	180.24	186.52	177.10	7.97	5.32	18.39
3. Private / JVC	601.19	449.40	491.95	436.86	5359.31	4622.56	5331.31	-8.65	-13.29	-25.25
Onshore	250.40	144.84	110.84	131.41	1596.59	1399.11	1129.46	30.67	23.87	-42.16
Andhra Pradesh	4.69	0.31	0.00	0.19	19.26	3.93	0.00	0.00	0.00	-93.39
Arunachal Pradesh	30.72	1.17	2.08	1.45	68.05	13.55	21.55	-43.60	-37.10	-96.19
Assam	0.84	30.18	8.15	30.53	243.50	259.71	24.10	-	-	-
Gujarat	9.55	5.79	5.76	5.84	78.71	59.42	64.19	0.42	-7.43	-39.43
Rajasthan	201.87	105.04	93.64	90.94	1160.14	1041.57	1008.37	12.17	3.29	-47.97
Tamil Nadu	2.73	2.36	1.21	2.46	26.93	20.94	11.25	95.12	86.11	-13.45
CBM	132.68	62.15	60.92	63.38	1309.67	596.63	601.80	2.01	-0.86	-53.16
Jharkhand (CBM)	0.36	0.45	0.34	0.41	3.52	2.71	3.52	31.96	-23.02	26.23
Madhya Pradesh (CBM)	79.26	30.92	17.45	31.74	782.42	300.21	141.24	77.17	112.56	-60.99
West Bengal (CBM)	53.06	30.78	43.13	31.23	523.73	293.70	457.04	-28.64	-35.74	-41.99
Offshore	218.11	242.41	320.18	242.06	2453.05	2626.82	3600.05	-24.29	-27.03	11.14
Eastern Offshore	65.46	95.69	166.73	90.23	993.06	1244.70	1965.31	-42.61	-36.67	46.19
Gujarat Offshore	15.91	12.95	7.03	11.93	139.29	98.77	84.41	84.17	17.02	-18.61
Western Offshore	136.74	133.77	146.42	139.90	1320.70	1283.35	1550.33	-8.64	-17.22	-2.17
TOTAL (1+2+3)	3114.02	2841.45	2695.07	2866.50	29694.58	27491.66	27382.59	5.43	0.40	-8.75
CBM	132.68	62.15	60.92	63.38	1309.67	596.63	601.80	2.01	-0.86	-53.16
Onshore	990.49	847.19	829.22	850.91	9115.40	8389.95	8275.48	2.17	1.38	-14.47
Offshore	1990.85	1932.11	1804.93	1952.20	19269.51	18505.09	18505.31	7.05	0.00	-2.95

Note: Totals may not tally due to rounding off figures.

*: Provisional. **: Revised

CBM: Coal Bed Methane production.

Reasons for shortfall are indicated in the note.

MINISTRY OF PETROLEUM & NATURAL GAS

Annexure-III (Para 3)

Crude Oil Processed during the month of January, 2019 and cumulatively for the period April-January, 2018-19 vis-à-vis April-January, 2017-18

(Qty: '000' Tonnes)

Name of Undertaking/Unit	Planned production during the month*	Production during the			Cumulative Production			% variation over last year		% variation during the month under review over planned production
		Month under review *	Corresponding month of last year	Preceding month of current year **	(April-January)			During the month under	Upto the end of the period	
					Planned production during current year*	Actual production during current year *	Actual production during corresponding period of last year **			
(1)	(2)	(3)	(4)	(5)	(6)	(7)	(8)	(9)	(10)	(11)
A. Public Sector	12411.21	13144.64	13160.93	12752.29	123862.38	126282.00	121220.34	-0.12	4.18	5.91
1. IOC, Guwahati	90.00	0.00	85.88	15.92	876.00	707.10	859.30	-	-17.71	-
2. IOC, Barauni	565.89	586.38	596.86	599.71	5422.99	5519.86	4766.14	-1.76	15.81	3.62
3. IOC, Gujarat	687.00	1182.87	1279.22	1188.66	11222.99	11449.26	11395.09	-7.53	0.48	72.18
4. IOC, Haldia	710.00	617.38	709.35	688.71	6690.00	6616.73	6306.86	-12.96	4.91	-13.04
5. IOC, Mathura	678.90	722.63	830.04	821.51	7766.00	8097.59	7630.48	-12.94	6.12	6.44
6. IOC, Digboi	56.00	56.47	57.69	53.70	547.00	564.97	554.91	-2.11	1.81	0.84
7. IOC, Panipat	1370.00	1384.22	1364.91	1388.50	13506.00	13679.87	12985.98	1.41	5.34	1.04
8. IOC, Bongaigaon	190.65	240.64	204.63	226.60	1844.38	2072.94	1972.75	17.60	5.08	26.22
9. IOC, Paradip	1320.22	1381.17	1080.36	1346.63	11940.27	11928.06	11586.35	27.84	2.95	4.62
Total IOC	5668.66	6171.76	6208.92	6329.93	59815.63	60636.36	58057.86	-0.60	4.44	8.88
10. BPCL, Mumbai	1170.12	1236.25	1312.69	1260.60	11369.51	12221.29	11589.58	-5.82	5.45	5.65
11. BPCL, Kochi	1390.48	1517.21	1365.09	955.77	12881.30	13287.13	11529.31	11.14	15.25	9.11
Total BPCL	2560.60	2753.47	2677.78	2216.36	24250.81	25508.42	23118.89	2.83	10.34	7.53
12. HPCL, Mumbai	729.57	674.33	746.61	725.67	7061.57	7203.50	7215.22	-9.68	-0.16	-7.57
13. HPCL, Visakh	825.14	834.31	824.60	765.51	7981.15	8147.26	8002.21	1.18	1.81	1.11
Total HPCL	1554.71	1508.65	1571.21	1491.18	15042.72	15350.76	15217.43	-3.98	0.88	-2.96
14. CPCL, Manali	930.00	958.19	917.27	938.70	8590.00	8456.98	8530.23	4.46	-0.86	3.03
15. CPCL, CBR	0.00	45.77	52.95	38.95	300.00	352.47	416.14	-13.56	-15.30	-
Total CPCL	930.00	1003.96	970.22	977.65	8890.00	8809.45	8946.37	3.48	-1.53	7.95
16. NRL, Numaligarh	242.05	240.00	250.70	263.51	2389.32	2439.15	2385.84	-4.27	2.23	-0.85
17. MRPL, Mangalore	1450.00	1459.31	1475.36	1468.35	13425.00	13486.70	13427.09	-1.09	0.44	0.64
18. ONGC, Tatipaka	5.18	7.499	6.74	5.307	48.90	51.17	66.86	11.26	-23.47	44.72
B. Joint Venture	1581.00	1679.39	1615.36	1658.13	14204.00	14748.79	12557.81	3.96	17.45	6.22
19. BORL, Bina	660.00	717.78	600.20	572.90	5120.00	4377.58	5638.02	19.59	-22.36	0.00
20. HMEI, GGSR, Bhatinda	921.00	961.61	1015.17	1085.23	9084.00	10371.22	6919.80	-5.28	49.88	4.41
C. Private Sector	7939.23	7120.83	7993.50	6621.50	74636.20	73595.21	76955.48	-10.92	-4.37	-10.31
21. RIL, Jamnagar	2929.07	2211.45	2929.07	2806.98	27651.02	26927.48	27651.02	-24.50	-2.62	-24.50
22. RIL, SEZ	3294.16	3203.32	3294.16	3332.43	31991.18	31141.87	31991.18	-2.76	-2.65	-2.76
Total RIL	6223.23	5414.77	6223.23	6139.41	59642.20	58069.35	59642.20	-12.99	-2.64	-12.99
23. NEL, Vadinar	1716.00	1706.06	1770.27	482.09	14994.00	15525.86	17313.28	-3.63	-10.32	-0.58
TOTAL(A+B+C)	21931.44	21944.86	22769.79	21031.92	212702.58	214626.00	210733.63	-3.62	1.85	0.06

Note: Totals may not tally due to rounding off figures. *: Provisional. **:Revised

Reasons for shortfall are indicated in the note.

MINISTRY OF PETROLEUM & NATURAL GAS

Annexure-IV (Para 3.4)

Refinery-wise Capacity Utilisation during the month of January, 2019 and cumulatively for the period April-January, 2018-19 vis-à-vis April-January, 2017-18

(Qty: '000' Tonnes)

Name of Undertaking/Unit	January, 2019			January, 2018			Cumulative (April - January)					
	Prorated Installed Capacity	Actual Crude T'put *	% Utilisation of Installed Capacity	Prorated Installed Capacity	Actual Crude T'put	% Utilisation of Installed Capacity	2018-19			2017-18		
							Prorated Installed Capacity	Actual Crude T'put *	% Utilisation of Installed Capacity	Prorated Installed Capacity	Actual Crude T'put **	% Utilisation of Installed Capacity
(1)	(2)	(3)	(4)	(5)	(6)	(7)	(8)	(9)	(10)	(11)	(12)	(13)
A. Public Sector	12066.00	13144.64	108.94	11805.00	13160.93	111.49	119102.00	126282.00	106.03	116528.00	121220.34	104.03
1. IOC, Guwahati	85.00	0.00	0.00	85.00	85.88	101.03	838.00	707.10	84.38	838.00	859.30	102.54
2. IOC, Barauni	510.00	586.38	114.98	510.00	596.86	117.03	5030.00	5519.86	109.74	5030.00	4766.14	94.75
3. IOC, Gujarat	1164.00	1182.87	101.62	1164.00	1279.22	109.90	11485.00	11449.26	99.69	11485.00	11395.09	99.22
4. IOC, Haldia	637.00	617.38	96.92	637.00	709.35	111.36	6288.00	6616.73	105.23	6288.00	6306.86	100.30
5. IOC, Mathura	679.00	722.63	106.43	679.00	830.04	122.24	6707.00	8097.59	120.73	6707.00	7630.48	113.77
6. IOC, Digboi	55.00	56.47	102.67	55.00	57.69	104.89	545.00	564.97	103.66	545.00	554.91	101.82
7. IOC, Panipat	1274.00	1384.22	108.65	1274.00	1364.91	107.14	12575.00	13679.87	108.79	12575.00	12985.98	103.27
8. IOC, Bongaigaon	200.00	240.64	120.32	200.00	204.63	102.31	1970.00	2072.94	105.23	1970.00	1972.75	100.14
9. IOC, Paradip	1274.00	1381.17	108.41	1274.00	1080.36	84.80	12575.00	11928.06	94.86	12575.00	11586.35	92.14
Total IOC	5877.00	6171.76	105.02	5877.00	6208.92	105.65	58014.00	60636.36	104.52	58014.00	58057.86	100.08
10. BPCL, Mumbai	1019.00	1236.25	121.32	1019.00	1312.69	128.82	10060.00	12221.29	121.48	10060.00	11589.58	115.20
11. BPCL, Kochi	1316.00	1517.21	115.29	1053.00	1365.09	129.64	12995.00	13287.13	102.25	10396.00	11529.31	110.90
Total BPCL	2336.00	2753.47	117.87	2072.00	2677.78	129.24	23055.00	25508.42	110.64	20456.00	23118.89	113.02
12. HPCL, Mumbai	637.00	674.33	105.86	637.00	746.61	117.21	6288.00	7203.50	114.56	6288.00	7215.22	114.75
13. HPCL, Visakh	705.00	834.31	118.34	707.00	824.60	116.63	6958.00	8147.26	117.09	6984.00	8002.21	114.58
Total HPCL	1342.00	1508.65	112.42	1344.00	1571.21	116.91	13246.00	15350.76	115.89	13271.00	15217.43	114.67
14. CPCL, Manali	892.00	958.19	107.42	892.00	917.27	102.83	8803.00	8456.98	96.07	8803.00	8530.23	96.90
15. CPCL, CBR	85.00	45.77	53.85	85.00	52.95	62.29	838.00	352.47	42.06	838.00	416.14	49.66
Total CPCL	977.00	1003.96	102.76	977.00	970.22	99.31	9641.00	8809.45	91.37	9641.00	8946.37	92.80
16. NRL, Numaligarh	255.00	240.00	94.12	255.00	250.70	240.00	2515.00	2439.15	96.98	2515.00	2385.84	94.86
17. MRPL, Mangalore	1274.00	1459.31	114.55	1274.00	1475.36	115.80	12575.00	13486.70	107.25	12575.00	13427.09	106.78
18. ONGC, Tatipaka	6.00	7.50	124.98	6.00	6.74	112.33	55.00	51.17	93.03	55.00	66.86	121.57
B. Joint Venture	1469.00	1679.39	114.32	1274.00	1615.36	126.79	14504.00	14748.79	101.69	12575.00	12557.81	99.86
19. BORL, Bina	510.00	717.78	140.74	510.00	600.20	117.69	5030.00	4377.58	87.03	5030.00	5638.02	112.09
20. HMEL, GGSR, Bhatinda	960.00	961.61	100.17	764.00	1015.17	132.88	9473.00	10371.22	109.48	7545.00	6919.80	91.71
C. Private Sector	7491.00	7120.83	95.06	6795.00	7993.50	117.64	73943.00	73595.21	99.53	67068.00	76955.48	114.74
21. RIL, Jamnagar	2803.00	2211.45	78.90	2803.00	2929.07	104.50	27666.00	26927.48	97.33	27666.00	27651.02	99.95
22. RIL, SEZ	2990.00	3203.32	107.13	2293.00	3294.16	143.66	29510.00	31141.87	105.53	22636.00	31991.18	141.33
Total RIL	5792.00	5414.77	93.49	5096.00	6223.23	122.12	57176.00	58069.35	101.56	50301.00	59642.20	118.57
23. NEL, Vadinar	1699.00	1706.06	100.42	1699.00	1770.27	104.19	16767.00	15525.86	92.60	16767.00	17313.28	103.26
TOTAL(A+B+C)	21026.00	21944.86	104.37	19874.00	22769.79	114.57	207548.00	214626.00	103.41	196172.00	210733.63	107.42

Note: Crude throughput in terms of crude oil processed. *: Provisional. **: Revised

MINISTRY OF PETROLEUM & NATURAL GAS

Annexure-V (Para 3.4)

Production of Petroleum Products during the month of January, 2019 and cumulatively for the period April-January, 2018-19 vis-à-vis April-January, 2017-18

(Qty: '000' Tonnes)

Name of Undertaking/Unit	Planned production during the month*	Production during the			Cumulative Production			% variation over last year		% variation during the month under review over planned production
		Month under review *	Corresponding month of last year	Preceding month of current year **	(April-January)			During the month under review	Upto the end of the period	
(1)	(2)	(3)	(4)	(5)	(6)	(7)	(8)			(9)
I. Refinery										
A. Public Sector	11524.69	12496.53	12481.26	12232.82	116032.14	119729.63	114605.56	0.12	4.47	8.43
1. IOC, Guwahati	87.17	25.41	98.55	65.71	846.72	864.88	957.04	-74.22	-9.63	-70.85
2. IOC, Barauni	539.64	561.88	572.09	558.56	5057.48	5196.13	4448.52	-1.78	16.81	4.12
3. IOC, Gujarat	557.89	1151.75	1229.17	1164.55	10312.99	10880.07	10936.45	-6.30	-0.52	106.45
4. IOC, Haldia	648.45	559.65	667.97	609.79	6172.35	6173.51	5883.77	-16.22	4.92	-13.69
5. IOC, Mathura	632.55	714.22	837.34	818.83	7452.85	7950.78	7570.53	-14.70	5.02	12.91
6. IOC, Digboi	56.43	56.46	57.87	54.62	541.52	569.01	558.73	-2.44	1.84	0.06
7. IOC, Panipat	1360.46	1435.34	1427.58	1468.33	13666.82	14087.37	13080.69	0.54	7.70	5.50
8. IOC, Bongaigaon	177.47	218.99	220.93	220.92	1689.65	1923.31	1825.81	-0.88	5.34	23.40
9. IOC, Paradip	1193.45	1236.78	943.28	1235.20	10750.56	10786.11	10388.77	31.12	3.82	3.63
Total IOC	5253.49	5960.48	6054.77	6196.50	56490.94	58431.15	55650.31	-1.56	5.00	13.46
10. BPCL, Mumbai	1127.56	1167.42	1276.60	1214.07	10938.58	11739.46	11244.72	-8.55	4.40	3.53
11. BPCL, Kochi	1291.03	1398.61	1266.48	891.55	11975.25	12420.05	10891.63	10.43	14.03	8.33
Total BPCL	2418.59	2566.03	2543.08	2105.62	22913.83	24159.50	22136.35	0.90	9.14	6.10
12. HPCL, Mumbai	693.89	627.68	682.40	699.47	6617.67	6813.93	6729.20	-8.02	1.26	-9.54
13. HPCL, Visakh	763.23	746.46	766.24	737.61	7380.73	7574.21	7392.73	-2.58	2.45	-2.20
Total HPCL	1457.12	1374.13	1448.64	1437.09	13998.40	14388.14	14121.93	-5.14	1.89	-5.70
14. CPCL, Manali	841.99	881.62	805.22	856.61	7761.59	7626.84	7727.78	9.49	-1.31	4.71
15. CPCL, CBR	0.00	45.79	52.90	39.23	303.60	354.15	418.68	-13.43	-15.41	-
Total CPCL	841.99	927.41	858.11	895.84	8065.19	7981.00	8146.46	8.08	-2.03	10.14
16. NRL, Numaligarh	236.33	237.33	251.29	267.51	2332.82	2416.72	2396.80	-5.56	0.83	0.42
17. MRPL, Mangalore	1312.15	1424.07	1319.08	1325.10	12183.71	12304.22	12090.53	7.96	1.77	8.53
18. ONGC, Tatipaka	5.01	7.08	6.29	5.17	47.24	48.90	63.18	12.53	-22.61	41.33
B. Joint Venture	1458.76	1576.30	1555.68	1569.99	13209.92	13811.36	11719.88	1.33	17.85	8.06
19. BORL, Bina	584.76	615.74	550.08	549.18	4590.12	3906.53	5139.01	11.94	-23.98	5.30
20. HMEL, GGSR, Bhatinda	874.00	960.56	1005.59	1020.81	8619.80	9904.84	6580.87	-4.48	50.51	9.90
C. Private Sector	8513.75	7840.41	8510.22	7213.54	79596.39	81383.53	81731.45	-7.87	-0.43	-7.91
21. RIL, Jamnagar	2892.94	2348.14	2892.94	2821.64	27836.71	28322.61	27836.71	-18.83	1.75	-18.83
22. RIL, SEZ	3972.48	3733.01	3972.48	3994.97	37376.34	38176.14	37376.34	-6.03	2.14	-6.03
Total RIL	6865.42	6081.15	6865.42	6816.62	65213.05	66498.75	65213.05	-11.42	1.97	-11.42
23. NEL, Vadinar	1648.33	1759.26	1644.80	396.92	14383.33	14884.78	16518.40	6.96	-9.89	6.73
TOTAL(A+B+C)	21497.20	21913.24	22547.16	21016.34	208838.44	214924.52	208056.90	-2.81	3.30	1.94
II. Fractionators										
ONGC	277.67	307.82	277.39	306.07	2694.68	2970.24	2723.59	10.97	9.06	10.86
GAIL	74.50	111.42	102.71	118.79	979.10	1102.00	1057.09	8.47	4.25	49.55
OIL	3.30	3.02	3.16	1.40	29.80	27.56	27.77	-4.59	-0.75	-8.64
D. Total Fractionators	355.47	422.25	383.26	426.25	3703.58	4099.80	3808.45	10.17	7.65	18.79
Grand Total (A+B+C+D)	21852.66	22335.49	22930.42	21442.60	212542.02	219024.31	211865.35	-2.59	3.38	2.21

Note: Totals may not tally due to rounding off figures.

*: Provisional. **: Revised