

Government of India
Ministry of Petroleum and Natural Gas
Economic & Statistics Division

New Delhi
Dated the 22nd July, 2019

Monthly Production Report
June, 2019

Crude Oil

1. **Crude oil production¹** during June, 2019 was 2688.06 TMT which is 4.61% lower than target and 6.81% lower when compared with June 2018. Cumulative crude oil production during April-June, 2019 was 8206.57 TMT which is 2.82% lower than target for the period and 6.82% lower than production during corresponding period of last year. Unit-wise and State-wise crude oil production is given at **Annexure-I**. Unit-wise crude oil production for the month of June, 2019 and cumulatively for the period April-June, 2019 vis-à-vis same period of last year has been shown in Table-1 and month-wise in Figure-1.

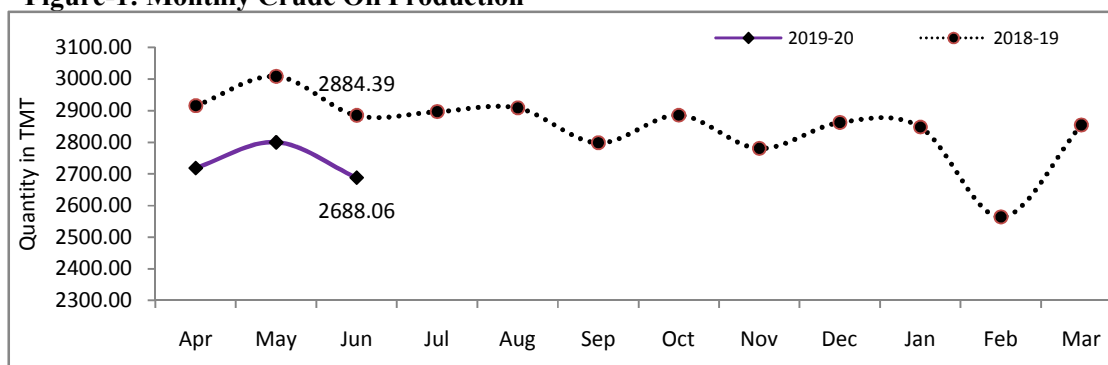
Table-1: Crude Oil Production (in TMT)

Oil Company	Target	June (Month)				April-June (Cumulative)			
	2019-20 (Apr-Mar)	2019-20		2018-19	% over last year	2019-20		2018-19	% over last year
		Target	Prod.*	Prod.		Target	Prod.*	Prod.	
ONGC	22153.90	1709.86	1686.22	1774.08	95.05	5166.14	5136.47	5392.34	95.25
OIL	3424.90	277.38	267.46	278.54	96.02	838.66	806.62	837.90	96.27
PSC Fields	9463.34	830.64	734.38	831.77	88.29	2439.59	2263.48	2576.94	87.84
Total	35042.15	2817.88	2688.06	2884.39	93.19	8444.39	8206.57	8807.17	93.18

Note: Totals may not tally due to rounding off.

*: Provisional

Figure-1: Monthly Crude Oil Production



¹Including condensate

Unit-wise production details with reasons for shortfall are as under:

- 1.1 Crude oil production by **ONGC** during June, 2019 was 1686.22 TMT which is 1.38 lower than the target and 4.95% lower when compared with June, 2018. Cumulative crude oil production by ONGC during April-June, 2019 was 5136.47 TMT which is 0.57% lower than target for the period and lower by 4.75% than production during corresponding period of last year. Major reason for lower production is less offtake by consumers in Tripura, Cauvery & Rajahmundry.
- 1.2 Crude oil production by **OIL** during June, 2019 was 267.46 TMT which is 3.58% lower than monthly target and 3.98% lower when compared with June, 2018. Cumulative crude oil production by OIL during April-June, 2019 was 806.62 TMT which is 3.82% lower than target for the period and 3.73% lower than production during the corresponding period of last year. Major reasons for lower production is less than planned contribution from workover wells and drilling wells.
- 1.3 Crude oil production by **Pvt/JVs** during June, 2019 was 734.38 TMT which is 11.59% lower than the monthly target and 11.71% lower than June, 2018. Cumulative crude oil production by Pvt/JVs during April-June, 2019 was 2263.48 TMT which is 7.22% lower than target for the period and 12.16% lower than the production during the corresponding period of last year. Reasons for shortfall in production are as under:
 - ❖ RJ-ON-90/1 (CEIL): Deficit is from Mangla due to delay in 45 FM (Fatehgarh-Mangla) infills ESP failure, drilling & work over activities and water leakage.
 - ❖ Operational issues in Bhagyam, Aishwarya and ABH fields.
 - ❖ CB-ONN-2005/9 (Mercator): Oil production from Jyoti-1 is stopped. Well closed for long term pressure build up study and could not be put back in production due to non-grant of EC for development campaign.
 - ❖ Jyoti-2 under WO from 31.03.19.
 - ❖ Non-grant of EC for development campaign till date leading to delay in drilling new development well.

Natural Gas

2. **Natural gas production** during June, 2019 was 2636.10 MMSCM which is 5.47% lower than the monthly target and 1.56% lower than June, 2018. Cumulative natural gas production during April-June, 2019 was 8441.40 MMSCM which is 4.86% lower than target for the period and 0.47% lower than production during corresponding period of last year. Unit-wise and state-wise natural gas production is given at **Annexure-II**. Unit-wise natural gas production for the month of June, 2019 and cumulatively for the period April-June, 2019 vis-à-vis same period of last year has been shown in Table-2 and month-wise in Figure-2.

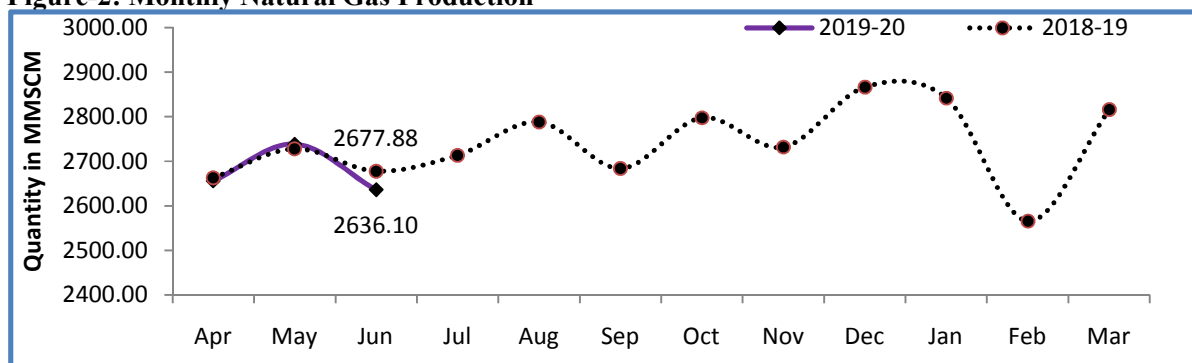
Table-2: Natural Gas Production (MMSCM)

Oil Company	Target	June (Month)				April-June (Cumulative)			
	2019-20 (Apr-Mar)	2019-20		2018-19	% over last year	2019-20		2018-19	% over last year
		Target	Prod.*	Prod.		Target	Prod.*	Prod.	
ONGC	25848.00	2040.38	2007.64	1952.61	102.82	6267.02	6127.68	5906.19	103.75
OIL	3309.59	278.86	224.51	220.49	101.82	842.66	679.89	669.35	101.57
PSC Fields	5395.20	469.41	403.95	504.78	80.03	1331.72	1223.28	1493.28	81.92
Total	34552.79	2788.66	2636.10	2677.88	98.44	8441.40	8030.85	8068.82	99.53

Note: Totals may not tally due to rounding off.

*: Provisional

Figure-2: Monthly Natural Gas Production



2.1 Natural gas production by **ONGC** during June, 2019 was 2007.64 MMSCM which is 2.82% higher when compared with June, 2018 but 1.61% lower than the monthly target. Cumulative natural gas production by ONGC during April-June, 2019 was 6127.68 MMSCM which is 3.75% higher than the production during the corresponding period of the last year but 2.22% lower than the cumulative target.

2.2 Natural gas production by **OIL** during June, 2019 was 224.51 MMSCM which is 1.82% higher than June, 2018 but 19.49% lower than the monthly target. Cumulative natural gas production by OIL during April-June, 2019 was 679.89 MMSCM which is 1.57% higher than the production during the corresponding period of last year but 19.32% lower than the cumulative target. Reasons for shortfall in production are as under:

- ❖ Loss of potential in Deohal area due to presence of CO₂ in production stream.
- ❖ Environmental loss (Bandh and miscreant activities).
- ❖ Namrup Plant-II shut down since 19th May, 2019 due to disruption in process line of synthesis gas boiler outlet

2.3 Natural gas production by **Pvt/JVs** during June, 2019 was 403.95 MMSCM which is 13.95% lower than the monthly target and 19.97% lower when compared with June, 2018. Cumulative natural gas production by Pvt/JVs during April-June, 2019 was 1223.28 MMSCM which is 8.14% lower than the cumulative target and 18.08% lower than the

production during the corresponding period of last year. Reasons for shortfall in production are as under:

- ❖ KG-DWN-98/3 (RIL): MA field ceased production and closure of 2 wells in D1D3 field.
- ❖ KG-OSN-2001/3 (ONGC): Delay in anticipated production from well DDW D-5.
- ❖ RJ-ON/6(FEL): Production from wells DT-2, 11-W-2A, 11-W-1A & Sonara-1 reduced sharply due to high water cut and under performance of other wells OMM-1 & SGL-7.
- ❖ Raniganj East CBM Block (ESSAR): Few wells closed for planned maintenance and refrac jobs. Major customer 'Matix' operational shutdown.

3. Refinery Production (in terms of crude oil processed)

Refinery production during June, 2019 was 20302.66 TMT which is 3.56% lower than the target for the month and 7.15% lower when compared with June, 2018. Cumulative production during April-June, 2019 was 62583.57 TMT which is 0.13% lower than the target for the period and 2.15% lower than the production during corresponding period of last year. Unit-wise production is given at **Annexure-III**. Company-wise production for the month of June, 2019 and cumulatively for the period April-June, 2019 vis-à-vis same period of last year has been shown in Table-3 and month-wise in Figure-3.

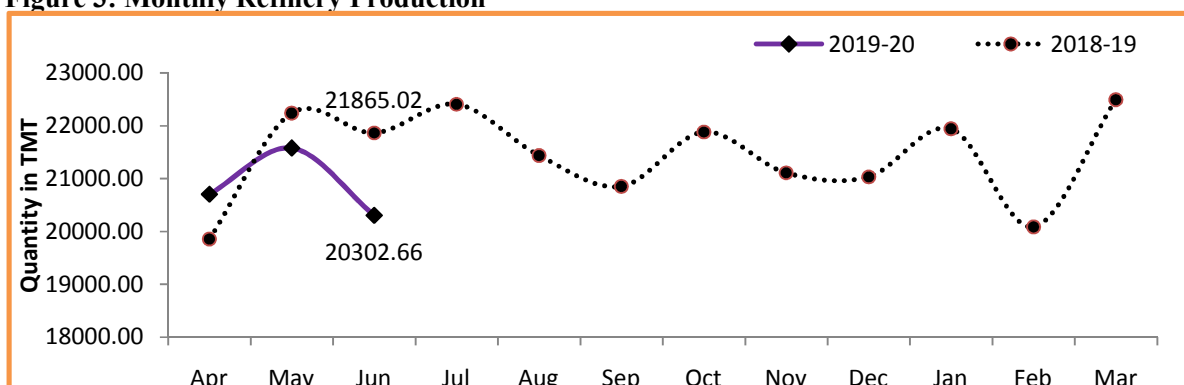
Table 3: Refinery Production (TMT)

Oil Company	Target	June (Month)				April-June (Cumulative)			
	2019-20 (Apr-Mar)	2019-20		2018-19	% over last year	2019-20		2018-19	% over last year
		Target	Prod.*	Prod.		Target	Prod.*	Prod.	
CPSE	145944	11995.95	11363.80	12697.66	89.50	36006.63	34523.36	37125.57	92.99
IOCL	69900	6093.00	5821.67	6071.38	95.89	17552.86	17282.80	17666.43	97.83
BPCL	30900	1890.00	2106.47	2582.92	81.55	7159.99	7440.32	7774.38	95.70
HPCL	16499	1506.00	1474.32	1507.14	97.82	4469.00	3915.45	4521.15	86.60
CPCL	10400	900.00	877.79	917.02	95.72	2730.00	2621.93	2620.51	100.05
NRL	2800	250.70	217.21	237.57	91.43	760.50	681.22	675.81	100.80
MRPL	15400	1355.00	858.83	1378.20	62.32	3325.00	2560.12	3851.24	66.48
ONGC	46	1.25	7.51	3.44	218.68	9.28	21.51	16.05	134.05
JVs	18755	1539.00	1731.74	1650.99	104.89	4665.00	5240.77	4843.07	108.21
BORL	7800	640.00	677.35	615.88	109.98	1940.00	2052.97	1718.31	119.48
HMEL	10955	899.00	1054.39	1035.11	101.86	2725.00	3187.80	3124.76	102.02
Private	88041	7516.37	7207.12	7516.37	95.89	21990.31	22819.44	21990.31	103.77
RIL	69145	5792.38	5482.49	5792.38	94.65	16746.76	17625.96	16746.76	105.25
EOL	18896	1723.99	1724.63	1723.99	100.04	5243.55	5193.48	5243.55	99.05
TOTAL	252740	21051.32	20302.66	21865.02	92.85	62661.94	62583.57	63958.95	97.85

Note: Totals may not tally due to rounding off.

*: Provisional

Figure 3: Monthly Refinery Production



3.1 **CPSE Refineries' production** during June, 2019 was 11363.80 TMT which is 5.27% lower than the target for the month and 10.50% lower when compared with June, 2018. Cumulative production by CPSE refineries during April-June, 2019 was 34523.36 TMT which is 4.12% lower than the target for the period and 7.01% lower than the production during corresponding period of last year. Reasons for shortfall of refinery production in some CPSE refineries are as under:

- ❖ IOCL, Barauni: Lower due to Naphtha & SKO containment.
- ❖ IOCL, Digboi: Lower due to DCU shutdown.
- ❖ IOCL, Panipat: Lower due to high VGO stock.
- ❖ HPCL, Visakh: Lower due to unplanned shutdown of primary units.
- ❖ CPCL, Manali: Lower due to CDU-1 shutdown by power interruption and delayed start-up due to water shortage.
- ❖ NRL, Numaligarh: Lower due to shutdown of secondary unit.
- ❖ MRPL, Mangalore: Lower due to restrictions in supply of water to refinery.

3.2 **Production in JV refineries** during June, 2019 was 1731.74 TMT which is 12.52% higher than the target for the month and 4.89% higher when compared with June, 2018. Cumulative production by JVs refineries during April-June, 2019 was 5240.77 TMT which is 12.34% higher than the target for the period and 8.21% higher than the production during corresponding period of last year.

3.3 **Production in private refineries** during June, 2019 was 7207.12 TMT which is lower by 4.11% than the target both for the month and corresponding month of last year. Cumulative production by private refineries during April-June, 2019 was 22819.44 TMT which is higher by 3.77% than the target and corresponding period of last year.

3.4 Refinery-wise details of the capacity utilization and production of petroleum products during the month of June, 2019 and cumulatively for the period April-June, 2019 vis-à-vis April-June, 2018 are given at **Annexures - IV and V** respectively.

MINISTRY OF PETROLEUM & NATURAL GAS

Annexure-I (Para-1)

Crude Oil Production during the month of June, 2019 and cumulatively for the period April-June, 2019 vis-à-vis April-June, 2018

(Figures in Thousand Metric Tons)

Name of Undertaking/Unit/State	Planned production during the month*	Production during the			Cumulative Production			% variation over last year		% variation during the month under review over planned production
		Month under review *	Corresponding month of last year **	Preceding month of current year **	(April-June)			During the month under review	Upto the end of the period	
					Planned production during current year*	Actual production during current year *	Actual production during corresponding period of last year **			
(1)	(2)	(3)	(4)	(5)	(6)	(7)	(8)	(9)	(10)	(11)
1. ONGC	1709.86	1686.22	1774.08	1759.49	5166.14	5136.47	5392.34	-4.95	-4.75	-1.38
Onshore	501.62	500.47	497.45	521.77	1529.57	1525.91	1508.55	0.61	1.15	-0.23
Andhra Pradesh	21.80	17.25	21.67	18.06	64.91	54.95	72.65	-20.38	-24.36	-20.88
Assam ^	81.12	79.76	79.62	82.00	242.94	241.00	243.59	0.17	-1.06	-1.68
Gujarat	375.46	377.89	372.04	395.32	1148.35	1151.14	1123.04	1.57	2.50	0.65
Tamil Nadu	23.24	25.58	24.12	26.40	73.37	78.82	69.27	6.01	13.79	10.06
Offshore	1208.25	1185.75	1276.63	1237.72	3636.57	3610.55	3883.79	-7.12	-7.04	-1.86
Eastern Offshore	1.55	1.94	1.17	1.46	4.58	4.96	3.32	65.01	49.49	24.95
Western Offshore	1082.12	1061.83	1149.63	1106.46	3263.88	3243.07	3500.45	-7.64	-7.35	-1.88
Condensates	124.58	121.98	125.82	129.81	368.11	362.52	380.02	-3.05	-4.61	-2.08
2. OIL (Onshore)	277.38	267.46	278.54	273.95	838.66	806.62	837.90	-3.98	-3.73	-3.58
Assam	275.36	264.99	277.77	271.59	833.68	799.49	835.57	-4.60	-4.32	-3.77
Arunachal Pradesh	1.84	1.85	0.57	1.78	4.44	5.41	1.73	224.34	211.94	0.93
Rajasthan (heavy oil)	0.18	0.62	0.20	0.59	0.55	1.73	0.59	214.53	192.45	244.93
3. Private / JVC	830.64	734.38	831.77	766.59	2439.59	2263.48	2576.94	-11.71	-12.16	-11.59
Onshore	683.54	602.20	664.25	619.71	1990.74	1852.98	2097.43	-9.34	-11.65	-11.90
Andhra Pradesh	6.68	0.82	0.96	1.79	15.12	3.52	2.11	-15.35	66.65	-87.78
Arunachal Pradesh	2.63	2.70	2.99	2.91	7.97	8.31	9.39	-9.57	-11.51	2.58
Assam	3.92	2.60	2.75	2.08	10.53	7.43	6.13	-5.34	21.19	-33.57
Gujarat	30.16	11.36	11.95	10.42	90.35	31.95	36.16	-4.93	-11.66	-62.35
Rajasthan	632.26	577.56	638.59	594.64	1842.87	1779.52	2023.55	-9.56	-12.06	-8.65
Tamil Nadu	7.89	7.16	7.01	7.87	23.90	22.26	20.09	2.15	10.81	-9.18
Offshore	147.10	132.19	167.52	146.87	448.85	410.50	479.50	-21.09	-14.39	-10.14
Eastern Offshore	43.55	44.02	56.30	45.27	138.18	133.01	165.59	-21.82	-19.68	1.08
Gujarat Offshore	63.07	53.77	60.39	60.35	196.15	170.22	171.33	-10.97	-0.65	-14.74
Western Offshore	40.49	34.40	50.83	41.26	114.52	107.28	142.59	-32.31	-24.76	-15.03
GRAND TOTAL (1+2+3)	2817.88	2688.06	2884.39	2800.02	8444.39	8206.57	8807.17	-6.81	-6.82	-4.61
Onshore	1462.53	1370.12	1440.24	1415.43	4358.98	4185.52	4443.88	-4.87	-5.81	-6.32
Offshore	1355.35	1317.94	1444.15	1384.59	4085.42	4021.05	4363.29	-8.74	-7.84	-2.76

Note: Totals may not tally due to rounding off figures.

^: Includes crude oil production of Tripura

*: Provisional. **: Revised

Reasons for shortfall are indicated in the note.

MINISTRY OF PETROLEUM & NATURAL GAS

Annexure-II (Para-2)

Natural Gas Production during the month of June, 2019 and cumulatively for the period April-June, 2019 vis-à-vis April-June, 2018

(Figures in Million Cubic Meters)

Name of Undertaking/Unit/State	Planned production during the month*	Production during the			Cumulative Production (April-June)			% variation over last year		% variation during the month under review over planned production
		Month under review *	Corresponding month of last year **	Preceding month of current year **	Planned production during current year*	Actual production during current year *	Actual production during corresponding period of last year **	During the month under review	Upto the end of the period	
(1)	(2)	(3)	(4)	(5)	(6)	(7)	(8)	(9)	(10)	(11)
1. ONGC	2040.38	2007.64	1952.61	2082.33	6267.02	6127.68	5906.19	2.82	3.75	-1.61
Onshore	505.93	451.50	430.72	464.45	1534.13	1371.71	1379.05	4.82	-0.53	-10.76
Andhra Pradesh	81.44	73.09	67.36	72.98	251.36	224.94	265.05	8.51	-15.13	-10.25
Assam	45.55	38.02	40.66	39.07	135.23	114.84	121.06	-6.50	-5.14	-16.54
Gujarat	105.30	107.31	108.93	108.25	319.43	324.10	332.09	-1.49	-2.41	1.91
Rajasthan	5.22	0.00	0.68	0.00	15.84	0.00	2.01	-	-	-
Tamil Nadu	117.08	88.02	95.69	96.54	350.96	283.05	297.24	-8.01	-4.77	-24.82
Tripura	151.34	145.06	117.41	147.62	461.30	424.78	361.61	23.55	17.47	-4.15
Offshore	1534.46	1556.14	1521.89	1617.88	4732.89	4755.97	4527.14	2.25	5.05	1.41
Eastern Offshore	105.98	105.69	65.10	80.31	265.00	264.82	176.80	62.35	49.78	-0.28
Western Offshore	1428.47	1450.45	1456.78	1537.58	4467.89	4491.15	4350.34	-0.43	3.24	1.54
2. OIL	278.86	224.51	220.49	230.89	842.66	679.89	669.35	1.82	1.57	-19.49
Assam	260.19	200.18	201.70	207.29	786.02	610.46	611.42	-0.76	-0.16	-23.07
Arunachal Pradesh	1.05	2.03	0.95	1.43	3.19	4.79	2.94	114.97	62.98	93.60
Rajasthan	17.62	22.30	17.85	22.17	53.46	64.63	54.99	24.96	17.55	26.57
3. Private / JVC	469.41	403.95	504.78	425.64	1331.72	1223.28	1493.28	-19.97	-18.08	-13.95
Onshore	171.30	144.78	143.92	138.42	459.97	427.44	418.79	0.60	2.07	-15.48
Andhra Pradesh	3.11	0.34	0.39	0.55	6.81	1.29	0.93	-13.45	38.41	-89.05
Arunachal Pradesh	0.65	0.61	1.74	0.63	1.95	1.87	5.49	-65.00	-66.05	-5.74
Assam	33.61	25.25	25.42	20.81	98.83	72.79	59.54	-0.64	22.26	-24.86
Gujarat	9.69	5.36	6.11	5.24	25.31	15.80	18.32	-12.17	-13.75	-44.66
Rajasthan	121.39	110.84	108.84	108.78	318.44	328.62	330.54	1.84	-0.58	-8.70
Tamil Nadu	2.85	2.38	1.43	2.41	8.63	7.08	3.97	66.69	78.44	-16.51
CBM	75.87	54.19	58.16	55.48	221.37	164.02	183.75	-6.84	-10.74	-28.58
Jharkhand (CBM)	0.55	0.49	0.23	0.43	1.66	1.27	0.67	109.01	89.97	-10.81
Madhya Pradesh (CBM)	37.20	28.14	29.34	28.96	104.10	84.98	92.18	-4.08	-7.82	-24.34
West Bengal (CBM)	38.12	25.55	28.59	26.09	115.61	77.78	90.90	-10.62	-14.44	-32.97
Offshore	222.24	204.98	302.69	231.74	650.39	631.82	890.74	-32.28	-29.07	-7.77
Eastern Offshore	98.53	82.34	146.10	84.04	296.28	251.46	453.42	-43.64	-44.54	-16.43
Gujarat Offshore	14.38	11.04	8.70	13.21	44.27	40.45	25.41	26.95	59.19	-23.21
Western Offshore	109.33	111.59	147.90	134.48	309.84	339.91	411.91	-24.55	-17.48	2.07
TOTAL (1+2+3)	2788.66	2636.10	2677.88	2738.87	8441.40	8030.85	8068.82	-1.56	-0.47	-5.47
CBM	75.87	54.19	58.16	55.48	221.37	164.02	183.75	-6.84	-10.74	-28.58
Onshore	956.09	820.79	795.13	833.76	2836.75	2479.04	2467.19	3.23	0.48	-14.15
Offshore	1756.69	1761.12	1824.58	1849.62	5383.28	5387.79	5417.88	-3.48	-0.56	0.25

Note: Totals may not tally due to rounding off figures.

*: Provisional. **: Revised

CBM: Coal Bed Methane production.

Reasons for shortfall are indicated in the note.

MINISTRY OF PETROLEUM & NATURAL GAS

Annexure-III (Para-3)

Crude Oil Processed during the month of June, 2019 and cumulatively for the period April-June, 2019 vis-à-vis April-June, 2018

(Figures in Thousand Metric Tons)

Name of Undertaking/Unit	Planned production during the month*	Production during the			Cumulative Production			% variation over last year		% variation during the month under review over planned production
		Month under review *	Corresponding month of last year	Preceding month of current year **	(April-June)			During the month under	Upto the end of the period	
					Planned production during current year*	Actual production during current year *	Actual production during corresponding period of last year **			
(1)	(2)	(3)	(4)	(5)	(6)	(7)	(8)	(9)	(10)	(11)
A. Public Sector	11995.95	11363.80	12697.66	11896.24	36006.63	34523.36	37125.57	-10.50	-7.01	-5.27
1. IOC, Guwahati	80.00	80.31	90.73	74.16	229.00	229.18	272.66	-11.48	-15.95	0.38
2. IOC, Barauni	577.00	569.52	475.16	582.78	1727.90	1720.92	1639.60	19.86	4.96	-1.30
3. IOC, Gujarat	990.00	937.45	1166.37	817.11	2451.00	2392.22	3609.73	-19.63	-33.73	-5.31
4. IOC, Haldia	693.00	687.91	687.72	703.71	2085.97	2075.84	2011.93	0.03	3.18	-0.74
5. IOC, Mathura	840.00	870.18	841.90	889.68	2571.00	2607.09	2547.38	3.36	2.34	3.59
6. IOC, Digboi	53.00	50.88	56.34	52.57	158.08	155.61	170.36	-9.69	-8.66	-4.00
7. IOC, Panipat	1335.00	1291.54	1345.67	1374.67	3857.30	3820.89	4081.89	-4.02	-6.39	-3.26
8. IOC, Bongaigaon	200.00	194.92	195.85	196.55	593.61	589.80	576.61	-0.48	2.29	-2.54
9. IOC, Paradip	1325.00	1138.97	1211.64	1235.48	3879.00	3691.27	2756.26	-6.00	33.92	-14.04
Total IOC	6093.00	5821.67	6071.38	5926.70	17552.86	17282.80	17666.43	-4.11	-2.17	-4.45
10. BPCL, Mumbai	540.00	629.60	1267.64	1332.92	2980.00	3084.86	3745.59	-50.33	-17.64	16.59
11. BPCL, Kochi	1350.00	1476.87	1315.28	1427.70	4180.00	4355.47	4028.79	12.29	8.11	9.40
Total BPCL	1890.00	2106.47	2582.92	2760.62	7159.99	7440.32	7774.38	-18.45	-4.30	11.45
12. HPCL, Mumbai	702.00	718.13	674.95	532.16	2030.00	1557.27	2109.98	6.40	-26.20	2.30
13. HPCL, Visakh	804.00	756.19	832.19	819.11	2439.00	2358.18	2411.17	-9.13	-2.20	-5.95
Total HPCL	1506.00	1474.32	1507.14	1351.27	4469.00	3915.45	4521.15	-2.18	-13.40	-2.10
14. CPCL, Manali	900.00	877.79	875.58	904.24	2730.00	2621.93	2509.05	0.25	4.50	-2.47
15. CPCL, CBR	0.00	0.00	41.45	0.00	0.00	0.00	111.46	-	-	-
Total CPCL	900.00	877.79	917.02	904.24	2730.00	2621.93	2620.51	-4.28	0.05	-2.47
16. NRL, Numaligarh	250.70	217.21	237.57	223.31	760.50	681.22	675.81	-8.57	0.80	-13.36
17. MRPL, Mangalore	1355.00	858.83	1378.20	722.30	3325.00	2560.12	3851.24	-37.68	-33.52	-36.62
18. ONGC, Tatipaka	1.25	7.51	3.44	7.81	9.28	21.51	16.05	118.68	34.05	502.08
B. Joint Venture	1539.00	1731.74	1650.99	1787.38	4665.00	5240.77	4843.07	4.89	8.21	12.52
19. BORL, Bina	640.00	677.35	615.88	704.56	1940.00	2052.97	1718.31	9.98	19.48	5.84
20. HMEL, GGSR, Bhatinda	899.00	1054.39	1035.11	1082.82	2725.00	3187.80	3124.76	1.86	2.02	17.28
C. Private Sector	7516.37	7207.12	7516.37	7894.24	21990.31	22819.44	21990.31	-4.11	3.77	-4.11
21. RIL, Jamnagar	2701.37	2402.63	2701.37	2809.56	8169.85	8037.50	8169.85	-11.06	-1.62	-11.06
22. RIL, SEZ	3091.01	3079.86	3091.01	3327.91	8576.91	9588.46	8576.91	-0.36	11.79	-0.36
Total RIL	5792.38	5482.49	5792.38	6137.46	16746.76	17625.96	16746.76	-5.35	5.25	-5.35
23. EOL, Vadinar	1723.99	1724.63	1723.99	1756.77	5243.55	5193.48	5243.55	0.04	-0.95	0.04
TOTAL(A+B+C)	21051.32	20302.66	21865.02	21577.85	62661.94	62583.57	63958.95	-7.15	-2.15	-3.56

Note: Totals may not tally due to rounding off figures. *: Provisional. **:Revised

Reasons for shortfall are indicated in the note.

MINISTRY OF PETROLEUM & NATURAL GAS

Annexure-IV (Para 3.4)

Refinery-wise Capacity Utilisation during the month of June, 2019 and cumulatively for the period April-June, 2019 vis-à-vis April-June, 2018

(Figures in Thousand Metric Tons)

Name of Undertaking/Unit	June, 2019			June, 2018			Cumulative (April - June)					
	Prorated Installed Capacity	Actual Crude T'put *	% Utilisation of Installed Capacity	Prorated Installed Capacity	Actual Crude T'put	% Utilisation of Installed Capacity	2019-20			2018-19		
							Prorated Installed Capacity	Actual Crude T'put *	% Utilisation of Installed Capacity	Prorated Installed Capacity	Actual Crude T'put **	% Utilisation of Installed Capacity
(1)	(2)	(3)	(4)	(5)	(6)	(7)	(8)	(9)	(10)	(11)	(12)	(13)
A. Public Sector	11677.00	11363.80	97.32	11677.00	12697.66	108.74	35322.00	34523.36	97.74	35419.00	37125.57	104.82
1. IOC, Guwahati	82.00	80.31	97.94	82.00	90.73	110.64	249.00	229.18	92.04	249.00	272.66	109.50
2. IOC, Barauni	493.00	569.52	115.52	493.00	475.16	96.38	1492.00	1720.92	115.34	1496.00	1639.60	109.60
3. IOC, Gujarat	1126.00	937.45	83.25	1126.00	1166.37	103.58	3406.00	2392.22	70.24	3416.00	3609.73	105.67
4. IOC, Haldia	616.00	687.91	111.67	616.00	687.72	111.64	1865.00	2075.84	111.31	1870.00	2011.93	107.59
5. IOC, Mathura	658.00	870.18	132.25	658.00	841.90	127.95	1989.00	2607.09	131.08	1995.00	2547.38	127.69
6. IOC, Digboi	53.00	50.88	96.00	53.00	56.34	106.30	162.00	155.61	96.05	162.00	170.36	105.16
7. IOC, Panipat	1233.00	1291.54	104.75	1233.00	1345.67	109.14	3730.00	3820.89	102.44	3740.00	4081.89	109.14
8. IOC, Bongaigaon	193.00	194.92	100.99	193.00	195.85	101.48	584.00	589.80	100.99	586.00	576.61	98.40
9. IOC, Paradip	1233.00	1138.97	92.37	1233.00	1211.64	0.00	3730.00	3691.27	98.96	3740.00	2756.26	0.00
Total IOC	5688.00	5821.67	102.35	5688.00	6071.38	106.74	17205.00	17282.80	100.45	17253.00	17666.43	102.40
10. BPCL, Mumbai	986.00	629.60	63.85	986.00	1267.64	128.56	2984.00	3084.86	103.38	2992.00	3745.59	125.19
11. BPCL, Kochi	1274.00	1476.87	115.92	1274.00	1315.28	103.24	3854.00	4355.47	113.01	3864.00	4028.79	104.26
Total BPCL	2260.00	2106.47	93.21	2260.00	2582.92	114.29	6837.00	7440.32	108.82	6856.00	7774.38	113.40
12. HPCL, Mumbai	616.00	718.13	116.58	616.00	674.95	109.57	1865.00	1557.27	83.50	1870.00	2109.98	112.83
13. HPCL, Visakh	682.00	756.19	110.88	682.00	832.19	122.02	2064.00	2358.18	114.25	2069.00	2411.17	116.54
Total HPCL	1299.00	1474.32	113.50	1299.00	1507.14	116.02	3928.00	3915.45	99.68	3939.00	4521.15	114.78
14. CPCL, Manali	863.00	877.79	101.71	863.00	875.58	101.46	2611.00	2621.93	100.42	2618.00	2509.05	95.84
15. CPCL, CBR	82.00	0.00	0.00	82.00	41.45	50.54	249.00	0.00	0.00	249.00	111.46	44.76
Total CPCL	945.00	877.79	92.89	945.00	917.02	97.04	2859.00	-	-	2867.00	2620.51	-
16. NRL, Numaligarh	247.00	217.21	87.94	247.00	237.57	96.18	746.00	681.22	91.32	748.00	675.81	90.35
17. MRPL, Mangalore	1233.00	858.83	69.65	1233.00	1378.20	111.78	3730.00	2560.12	68.64	3740.00	3851.24	102.97
18. ONGC, Tatipaka	5.00	7.51	150.28	5.00	3.44	68.72	16.00	21.51	134.46	16.00	16.05	100.31
B. Joint Venture	1570.00	1731.74	110.30	1422.00	1650.99	116.10	4749.00	5240.77	110.36	4313.00	4843.07	112.29
19. BORL, Bina	641.00	677.35	105.67	493.00	615.88	124.92	1939.00	2052.97	105.88	1496.00	1718.31	114.86
20. HMEL, GGSR, Bhatinda	929.00	1054.39	113.50	929.00	1035.11	111.42	2810.00	3187.80	113.44	2817.00	3124.76	110.93
C. Private Sector	7249.00	7207.12	99.42	7249.00	7516.37	103.69	21930.00	22819.44	104.06	21990.00	21990.31	100.00
21. RIL, Jamnagar	2712.00	2402.63	88.59	2712.00	2701.37	99.61	8205.00	8037.50	97.96	8227.00	8169.85	99.31
22. RIL, SEZ	2893.00	3079.86	106.46	2893.00	3091.01	106.84	8752.00	9588.46	109.56	8776.00	8576.91	97.73
Total RIL	5605.00	5482.49	97.81	5605.00	5792.38	103.34	16957.00	17625.96	103.95	17003.00	16746.76	98.49
23. EOL, Vadinar	1644.00	1724.63	104.90	1644.00	1723.99	104.87	4973.00	5193.48	104.43	4986.00	5243.55	105.17
TOTAL(A+B+C)	20496.00	20302.66	99.06	20348.00	21865.02	107.46	62001.00	62583.57	100.94	61722.00	63958.95	103.62

Note: Crude thruput in terms of crude oil processed. *: Provisional. **: Revised

MINISTRY OF PETROLEUM & NATURAL GAS

Annexure-V (Para 3.4)

Production of Petroleum Products during the month of June, 2019 and cumulatively for the period April-June, 2019 vis-à-vis April-June, 2018

(Figures in Thousand Metric Tons)

Name of Undertaking/Unit	Planned production during the month*	Production during the			Cumulative Production			% variation over last year		% variation during the month under review over planned production
		Month under review *	Corresponding month of last year	Preceding month of current year **	(April-June)			During the month under review	Upto the end of the period	
(1)	(2)	(3)	(4)	(5)	(6)	(7)	(8)	(9)	(10)	(11)
A. Public Sector	11197.36	10717.86	12137.63	11094.12	33795.27	32384.50	34883.57	-11.70	-7.16	-4.28
1. IOC, Guwahati	79.90	94.90	90.31	103.23	247.05	298.59	297.53	5.08	0.36	18.77
2. IOC, Barauni	533.84	521.04	475.60	527.85	1603.34	1583.01	1567.75	9.55	0.97	-2.40
3. IOC, Gujarat	882.55	823.18	1114.87	817.52	2282.76	2114.84	3430.49	-26.16	-38.35	-6.73
4. IOC, Haldia	646.17	626.95	648.40	655.48	1945.03	1907.03	1888.03	-3.31	1.01	-2.98
5. IOC, Mathura	814.00	862.73	829.28	862.72	2491.87	2537.81	2481.63	4.03	2.26	5.99
6. IOC, Digboi	53.05	48.44	56.91	53.04	157.92	155.27	173.32	-14.87	-10.42	-8.69
7. IOC, Panipat	1330.85	1313.07	1387.75	1412.69	3842.83	3900.28	4134.03	-5.38	-5.65	-1.34
8. IOC, Bongaigaon	186.43	180.13	187.52	200.04	571.74	581.24	529.26	-3.94	9.82	-3.38
9. IOC, Paradip	1188.98	1029.62	1121.75	1083.49	3485.66	3321.33	2450.19	-8.21	35.55	-13.40
Total IOC	5715.78	5500.06	5912.40	5716.06	16628.21	16399.39	16952.22	-6.97	-3.26	-3.77
10. BPCL, Mumbai	518.00	672.00	1225.67	1192.83	2857.00	2955.66	3609.69	-45.17	-18.12	29.73
11. BPCL, Kochi	1265.23	1457.81	1283.75	1274.80	3903.31	4057.87	3670.78	13.56	10.55	15.22
Total BPCL	1783.23	2129.81	2509.43	2467.62	6760.31	7013.53	7280.47	-15.13	-3.67	19.44
12. HPCL, Mumbai	661.00	700.04	640.97	494.37	1910.00	1478.69	1955.75	9.22	-24.39	5.91
13. HPCL, Visakh	744.00	648.57	735.40	757.17	2256.00	2122.64	2236.44	-11.81	-5.09	-12.83
Total HPCL	1405.00	1348.61	1376.37	1251.54	4166.00	3601.32	4192.19	-2.02	-14.09	-4.01
14. CPCL, Manali	812.39	810.93	809.73	792.68	2464.24	2389.00	2243.92	0.15	6.47	-0.18
15. CPCL, CBR	0.00	0.00	41.39	0.00	0.00	0.88	111.50	-	-	-
Total CPCL	812.39	810.93	851.12	792.68	2464.24	2389.88	2355.42	-4.72	1.46	-0.18
16. NRL, Numaligarh	245.69	217.61	226.29	217.69	745.22	655.02	662.58	-3.84	-1.14	-11.43
17. MRPL, Mangalore	1234.07	703.95	1258.91	641.37	3022.37	2305.47	3425.25	-44.08	-32.69	-42.96
18. ONGC, Tatipaka	1.20	6.90	3.11	7.15	8.92	19.89	15.44	121.71	28.76	475.33
B. Joint Venture	1413.72	1626.44	1528.85	1651.60	4288.62	4889.61	4503.18	6.38	8.58	15.05
19. BORL, Bina	569.72	622.69	563.84	638.12	1726.62	1866.50	1555.99	10.44	19.96	9.30
20. HMEL, GGSR, Bhatinda	844.00	1003.75	965.00	1013.48	2562.00	3023.11	2947.18	4.01	2.58	18.93
C. Private Sector	8598.14	7826.23	8598.14	8794.37	24565.47	25065.54	24565.47	-8.98	2.04	-8.98
21. RIL, Jamnagar	2960.51	2437.05	2960.51	3038.53	8629.50	8407.21	8629.50	-17.68	-2.58	-17.68
22. RIL, SEZ	4007.21	3747.18	4007.21	4094.98	10891.13	11701.42	10891.13	-6.49	7.44	-6.49
Total RIL	6967.73	6184.23	6967.73	7133.51	19520.63	20108.62	19520.63	-11.24	3.01	-11.24
23. EOL, Vadinar	1630.42	1642.00	1630.42	1660.85	5044.84	4956.91	5044.84	0.71	-1.74	0.71
TOTAL REFINERY (A+B+C)	21209.23	20170.53	22264.62	21540.08	62649.36	62339.65	63952.21	-9.41	-2.52	-4.90
ONGC	270.93	297.26	301.07	299.91	818.41	897.44	851.28	-1.27	5.42	9.72
OIL	100.27	81.42	97.45	103.97	300.82	297.75	309.85	-16.44	-3.91	-18.80
GAIL	3.00	2.92	1.43	3.21	9.20	9.29	7.90	103.85	17.60	-2.83
D. Total Fractionators	374.21	381.60	399.95	407.09	1128.43	1204.48	1169.03	-4.59	3.03	1.98
Grand Total (A+B+C+D)	21583.43	20552.13	22664.57	21947.17	63777.79	63544.13	65121.24	-9.32	-2.42	-4.78

Note: Totals may not tally due to rounding off figures.

*: Provisional.

** : Revised