

Government of India
Ministry of Petroleum and Natural Gas
Economic & Statistics Division

New Delhi
 Dated the 21st April, 2017

Monthly Production Report
March 2017

Crude Oil

- Crude oil production¹ during March, 2017 was 3090.40 TMT which is 6.26% lower than target but 0.94% higher when compared with March 2016. Cumulative crude oil production during April, 2016 - March, 2017 was 36008.40 TMT which is 2.90% and 2.53% lower than target and production during corresponding period of last year respectively. Unit-wise and state-wise crude oil production is given at Annexure-I. Unit-wise crude oil production for the month of March, 2017 and cumulatively for the period April, 2016 - March, 2017 vis-à-vis same period of last year has been shown in Table-1 and month-wise in Figure-1.

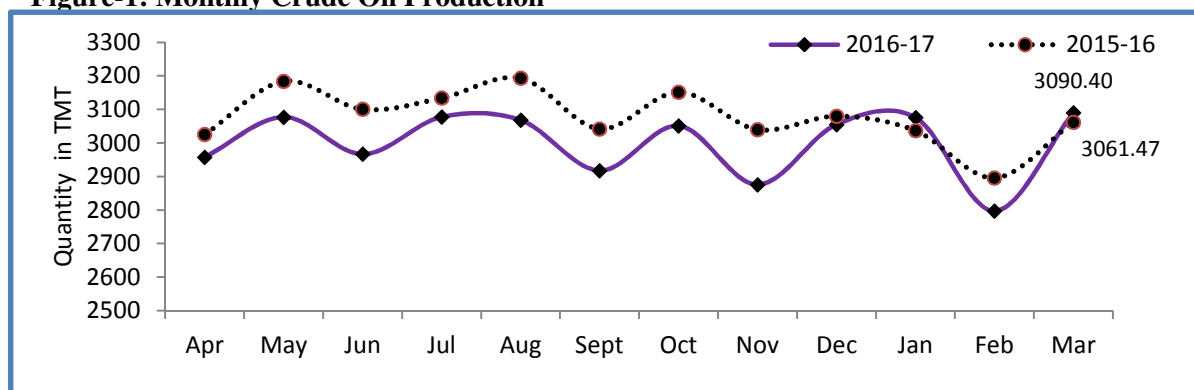
Table-1: Crude Oil Production (in TMT)

Oil Company	Target	March (Month)				April-March (Cumulative)			
	2016-17 (Apr-Mar)	2016-17		2015-16	% over last year	2016-17		2015-16	% over last year
		Target	Prod.*	Prod.		Target	Prod.*	Prod.	
ONGC	22766.00	2043.83	1931.29	1869.18	103.32	22766.00	22217.94	22359.71	99.37
OIL	3480.00	344.25	293.20	268.85	109.06	3480.00	3258.03	3226.04	100.99
PSC Fields	10839.32	908.86	865.91	923.45	93.77	10839.32	10532.43	11356.01	92.75
Total	37085.32	3296.94	3090.40	3061.47	100.94	37085.32	36008.40	36941.75	97.47

Note: Totals may not tally due to rounding off.

*: Provisional

Figure-1: Monthly Crude Oil Production



Unit-wise production details with reasons for shortfall have been given in following sub-sections:

¹ Including condensate

1.1 Crude oil production by ONGC during March, 2017 was 1931.29 TMT which is 5.51% lower than the monthly target but 3.32% higher when compared with March, 2016. Cumulative crude oil production by ONGC during April, 2016 - March, 2017 was 22217.94 TMT which is 2.41% lower than target for the period and 0.63% lower than production during corresponding period of last year. Reasons for shortfall in production are as under:

- ❖ Delay in deployment of MOPU-Sagar Samrat in WO-16
- ❖ Delay in implementation of “Development of Western Periphery of MHS (ZC)” Project.
- ❖ Natural decline in matured fields of Western Offshore.

1.2 Crude oil production by OIL during March, 2017 was 293.20 TMT which is 14.83% lower than monthly target but 9.06% higher than production in March, 2016. Cumulative crude oil production by OIL during April, 2016 - March, 2017 was 3258.03 TMT which is 6.38% lower than target for the period but 0.99% higher than production during corresponding period of last year. Reasons for shortfall in production are as under:

- ❖ Less than planned contribution from high producing areas like Greater Hapjan, Shalmari, Chandmari and Moran fields primarily on account of rise in water cut.
- ❖ Less than planned contribution from newly drilled wells.

1.3 Crude oil production by Pvt/JVs during March, 2017 was 865.91 TMT which is 4.73% lower than the monthly target and 6.23% lower than March, 2016. Cumulative crude oil production by Pvt/JVs during April, 2016 - March, 2017 was 10532.43 TMT which is 2.83% lower than target for the period and 7.25% lower than the production during corresponding period of last year. Reasons for shortfall in production are as under:

- ❖ RJ-ON-90/1: Mangala production is less due to liquid cut back for rectification of 14" MPT to CPF feed water line leak on 6.3.2017. Few high water cut wells closed at Mangala, poor reservoir performance of Bhagyam.
- ❖ Panna-Mukta: PF platform shutdown for riser remedial since 27.02.2017.
- ❖ CY-ONN-2002/2: Under Test Production.
- ❖ Natural Decline in Ravva.

Natural Gas

2 Natural gas production during March, 2017 was 2750.29 MMSCM which is 11.74% lower than the target for the month but 8.29% higher when compared with March, 2016. Cumulative natural gas production during April, 2016 - March, 2017 was 31896.67 MMSCM which is 6.51% lower than target for the period and 1.09% lower than the production during corresponding period of last year. Unit-wise and state-wise natural gas production is given at Annexure-II. Unit-wise natural gas production for the month of March, 2017 and cumulatively for the period April, 2016 -March, 2017 vis-à-vis same period of last year has been shown in Table-2 and month-wise in Figure-2.

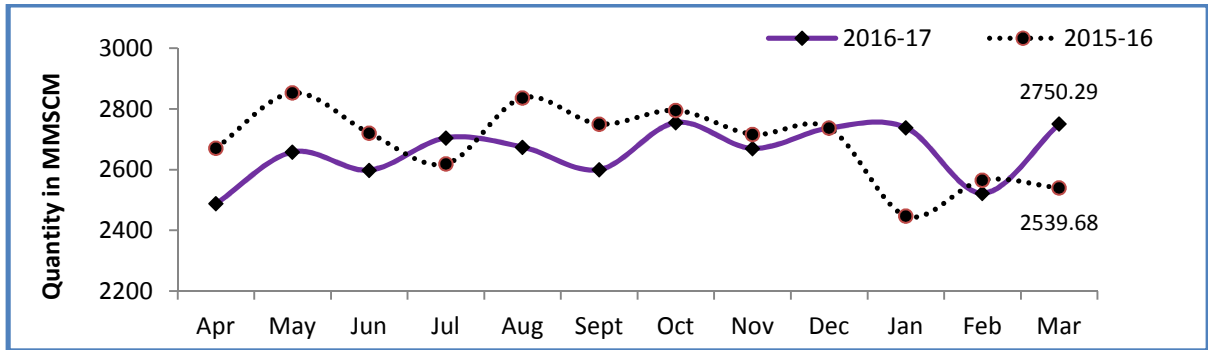
Table-2: Natural Gas Production (MMSCM)

Oil Company	Target	March (Month)				April-March (Cumulative)			
	2016-17 (Apr-Mar)	2016-17		2015-16	% over last year	2016-17		2015-16	% over last year
		Target	Prod.*	Prod.		Target	Prod.*	Prod.	
ONGC	22743.43	2095.77	1972.33	1642.79	120.06	22743.43	22087.98	21176.66	104.30
OIL	2950.03	243.44	251.02	253.68	98.95	2950.03	2936.55	2837.94	103.47
PSC Fields	8425.44	776.97	526.93	643.21	81.92	8425.44	6872.14	8234.61	83.45
Total	34118.90	3116.17	2750.29	2539.68	108.29	34118.90	31896.67	32249.21	98.91

Note: Totals may not tally due to rounding off.

*: Provisional

Figure-2: Monthly Natural Gas Production



2.1 Natural gas production by ONGC during March, 2017 was 1972.33 MMSCM which is 5.89% lower than the monthly target but 20.06% higher when compared with March, 2016. Cumulative natural gas production by ONGC during April, 2016 - March, 2017 was 22087.98 MMSCM which is 2.88% lower than the cumulative target but 4.30% higher than the production during the corresponding period of the last year. Reasons for shortfall in production are as under:

- ❖ Less than planned production from Daman & C-26 Cluster due to evacuation constraint (export lines to TCPP platform are not completed) and natural decline from Bassein field

2.2 Natural gas production by OIL during March, 2017 was 251.02 MMSCM which is 3.12% higher than the monthly target but 1.05% lower than March, 2016. Cumulative natural gas production by OIL during April, 2016 - March, 2017 was 2936.55 MMSCM which is 0.46% lower than the cumulative target but 3.47% higher than the production during the corresponding period of last year.

2.3 Natural gas production by Pvt/JVs during March, 2017 was 526.93 MMSCM which is 32.18% lower than the monthly target and 18.08% lower when compared with March, 2016. Cumulative natural gas production by Pvt/JVs during April, 2016 - March, 2017 was 6872.14 MMSCM which is 18.44% lower than the cumulative target and 16.55% lower than the production during the corresponding period of last year. Reasons for shortfall in production are as under:

- ❖ Underperformance of wells in KG- OSN-2001/3.
- ❖ Underperformance of Sohagpur West CBM block, closure of few wells for maintenance in Raniganj East CBM block.
- ❖ Closure of 2 wells in D1D3 field in KG-DWN-98/3. Gas rate reduced to study potential sand incursion issue in MA2 & study well performance vis-à-vis water production in MA8 since 13.03.2017.
- ❖ Panna-Mukta: PF platform shutdown for riser remedial measures since 27.02.2017.
- ❖ RJ-ON-90/1: Mangala production is less due to liquid cut back for rectification of 14" MPT to CPF feed water line leak on 6.3.2017. Few high water cut wells closed at Mangala, poor reservoir performance of Bhagyam.
- ❖ RJ-ON/6: Increase in Water cut in few wells.

Refinery Production (in terms of crude oil processed)

- 3 Refinery production during March, 2017 was 21312.91 TMT which is 3.83% higher than the target for the month but 0.33% lower when compared with March, 2016. Cumulative production during April, 2016-March, 2017 was 245368.89 TMT which is 2.06% higher than the target for the period and 5.37% higher than the production during corresponding period of last year. Unit-wise production is given at Annexure-III. Company-wise production for the month of March, 2017 and cumulatively for the period April, 2016 - March, 2017 vis-à-vis same period of last year has been shown in Table-3 and month-wise in Figure-3.

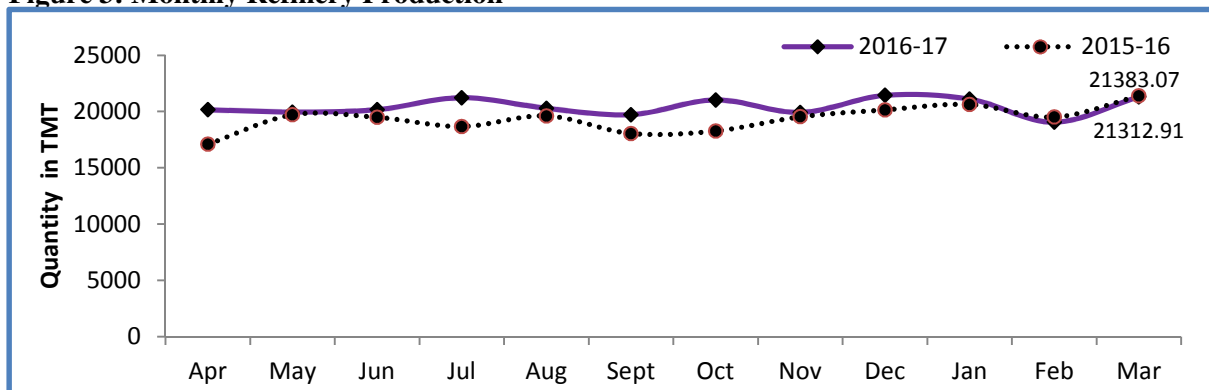
Table 3: Refinery Production (TMT)

Oil Company	Target	March (Month)				April-March (Cumulative)			
	2016-17 (Apr-Mar)	2016-17		2015-16	% over last year	2016-17		2015-16	% over last year
		Target	Prod.*	Prod.		Target	Prod.*	Prod.	
PSUs	135565.03	11821.08	12139.82	11951.73	101.57	135565.03	137394.61	127087.28	108.11
IOCL	65100.00	5758.09	6280.05	5500.97	114.16	65100.00	65190.52	58007.49	112.38
BPCL	25250.15	2083.67	1803.21	2097.65	85.96	25250.15	25361.56	24082.81	105.31
HPCL	16800.29	1493.00	1621.33	1615.53	100.36	16800.29	17845.56	17233.65	103.55
CPCL	10250.00	811.11	752.60	958.91	78.49	10250.00	10252.43	9643.70	106.31
NRL	2670.00	221.17	229.51	236.14	97.19	2670.00	2693.70	2520.27	106.88
MRPL	15450.00	1450.00	1445.66	1534.83	94.19	15450.00	15965.20	15531.99	102.79
ONGC	44.59	4.05	7.45	7.71	96.68	44.59	85.64	67.37	127.11
JVs	15000.00	948.55	1347.74	1574.90	85.58	15000.00	16881.52	17115.51	98.63
BORL	6000.00	525.00	618.67	638.34	96.92	6000.00	6360.06	6402.21	99.34
HMEL	9000.00	423.55	729.08	936.56	77.85	9000.00	10521.46	10713.31	98.21
Private	89852.65	7756.77	7825.35	7856.44	99.60	89852.66	91092.76	88662.01	102.74
RIL	69561.01	6084.87	6064.54	6084.87	99.67	69561.01	70173.87	69561.01	100.88
EOL	20291.64	1671.90	1760.81	1771.56	99.39	20291.64	20918.89	19100.99	109.52
TOTAL	240417.68	20526.41	21312.91	21383.07	99.67	240417.68	245368.89	232864.80	105.37

Note: Totals may not tally due to rounding off.

*: Provisional

Figure 3: Monthly Refinery Production



3.1 PSU Refineries' production during March, 2017 was 12139.82 TMT which is 2.70% higher than the target for the month and 1.57% higher than the production achieved in the corresponding month of last year. Cumulative production by PSU refineries during April, 2016 - March, 2017 was 137394.61 TMT which is 1.34% higher than the target for the period and 8.11% higher than the production during corresponding period of last year. Reasons for shortfall of refinery production in some PSU refineries are as under:

- ❖ IOCL, Paradip: Throughput is lower due to coke containment.
- ❖ IOCL, Haldia: Throughput is lower due to VGO stock build-up due to problems in OHCU.
- ❖ IOCL, Digboi / Guwahati: Lower availability of Assam crude.
- ❖ BPCL, Mumbai: Throughput is lower due to shifting of CDU3 shutdown and BS4 implementation.
- ❖ CPCL, Manali: Lower due OHCU shutdown.

3.2 Production in JV refineries during March, 2017 was 1347.74 TMT which is 42.08% higher than the target for the month and 14.42% lower than the production achieved in the corresponding month of last year. Cumulative production by JVs refineries during April, 2016 - March, 2017 was 16881.52 TMT which is 12.54% higher than the target for the period but 1.37% lower than the production during corresponding period of last year.

3.3 Production in private refineries during March, 2017 was 7825.35 TMT which is 0.88% lower than the target for the month and 0.4% lower when compared with March, 2016. Cumulative production by private refineries during April, 2016 - March, 2017 was 91092.77 TMT which is 1.38% higher than the target for the period and 2.74% higher than the production during corresponding period of last year.

3.4 Refinery-wise details of the capacity utilization and production of petroleum products during the month of March, 2017 and cumulatively for the period April, 2016 - March, 2017 vis-à-vis April, 2015 - March, 2016 are given at Annexures-IV and V respectively.

Annexure-I

(Para 1)

MINISTRY OF PETROLEUM & NATURAL GAS

Crude Oil Production during the month of March, 2017 and cumulatively for the period April-March, 2016-17 vis-a-vis April-March, 2015-16

(in TMT)

Name of Undertaking/Unit/State	Planned production during the month	Production during the			Cumulative Production (April-March)			% variation over last year		% variation during the month under review over planned production
		Month under review *	Corresponding month of last year **	Preceding month of current year	Planned production during current year	Actual production during current year *	Actual production during corresponding period of last year	During the month under review	Upto the end of the period	
(1)	(2)	(3)	(4)	(5)	(5)	(6)	(7)	(8)	(9)	(10)
1. ONGC	2043.834	1931.294	1869.176	1741.305	22766.000	22217.939	22359.710	3.32	-0.63	-5.51
Onshore	514.303	518.124	505.155	461.479	5940.600	5933.831	5816.761	2.57	2.01	0.74
Andhra Pradesh	24.682	27.879	23.120	21.756	282.000	276.041	294.792	20.58	-6.36	12.95
Assam ^	87.351	81.759	82.771	73.549	992.200	952.860	964.938	-1.22	-1.25	-6.40
Gujarat	381.840	386.002	378.772	345.704	4436.400	4467.740	4309.232	1.91	3.68	1.09
Tamil Nadu	20.430	22.484	20.492	20.470	230.000	237.190	247.799	9.72	-4.28	10.05
Offshore	1529.531	1413.170	1364.021	1279.826	16825.400	16284.108	16542.949	3.60	-1.56	-7.61
Eastern Offshore	3.250	0.941	2.094	1.526	26.400	15.682	27.114	-55.06	-42.16	-71.05
Western Offshore	1392.703	1289.870	1275.158	1168.534	15375.000	14905.127	15236.802	1.15	-2.18	-7.38
Condensates	133.578	122.359	86.769	109.766	1424.000	1363.299	1279.033	41.02	6.59	-8.40
2. OIL (Onshore)	344.247	293.197	268.851	260.319	3480.000	3258.029	3226.036	9.06	0.99	-14.83
Assam	343.723	292.549	268.187	259.738	3473.281	3250.362	3220.193	9.08	0.94	-14.89
Arunachal Pradesh	0.524	0.648	0.664	0.581	6.719	7.667	5.843	-2.41	31.22	23.66
3. DGH (Private / JVs)	908.855	865.905	923.446	795.636	10839.323	10532.430	11356.009	-6.23	-7.25	-4.73
Onshore	747.497	699.679	724.077	632.142	8745.462	8395.700	8809.798	-3.37	-4.70	-6.40
Arunachal Pradesh	4.426	3.919	5.055	3.599	52.042	47.591	51.514	-22.47	-7.62	-11.46
Gujarat	17.054	11.347	12.931	10.847	184.334	137.202	149.782	-12.25	-8.40	-33.46
Rajasthan	716.706	678.279	704.841	612.413	8438.694	8164.576	8601.591	-3.77	-5.08	-5.36
Tamil Nadu	9.311	6.134	1.250	5.283	70.391	46.331	6.911	-	-	-
Offshore	161.358	166.226	199.369	163.494	2093.862	2136.730	2546.211	-16.62	-16.08	3.02
Eastern Offshore	74.688	77.623	85.717	75.696	948.082	962.626	1232.369	-9.44	-21.89	3.93
Gujarat Offshore	21.710	31.423	34.106	28.116	333.110	381.603	410.913	-7.87	-7.13	44.74
Western Offshore	64.960	57.180	79.546	59.682	812.670	792.501	902.929	-28.12	-12.23	-11.98
GRAND TOTAL (1+2+3)	3296.936	3090.396	3061.473	2797.260	37085.323	36008.398	36941.755	0.94	-2.53	-6.26
Onshore	1606.047	1511.000	1498.083	1353.940	18166.062	17587.560	17852.595	0.86	-1.48	-5.92
Offshore	1690.889	1579.396	1563.390	1443.320	18919.262	18420.838	19089.160	1.02	-3.50	-6.59

Note: Totals may not tally due to rounding off.

*: Provisional.

**: Revised

^: Includes crude oil production of Tripura

Reasons for shortfall are indicated in the note.

MINISTRY OF PETROLEUM & NATURAL GAS

Natural Gas Production during the month of March, 2017 and cumulatively for the period April-March, 2016-17 vis-a-vis April-March, 2015-16

(in MMSCM)

Name of Undertaking/Unit/State	Planned production during the month	Production during the			Cumulative Production (April-March)			% variation over last year		% variation during the month under review over planned production
		Month under review *	Corresponding month of last year **	Preceding month of current year **	Planned production during current year	Actual production during current year *	Actual production during corresponding period of last year **	During the month under review	Upto the end of the period	
(1)	(2)	(3)	(4)	(5)	(5)	(6)	(7)	(8)	(9)	(10)
1. ONGC	2095.769	1972.330	1642.788	1773.105	22743.430	22087.979	21176.663	20.06	4.30	-5.89
Onshore	445.015	486.501	435.979	437.969	5242.430	5205.129	4770.335	11.59	9.11	9.32
Andhra Pradesh	77.217	80.846	62.377	71.467	800.000	867.766	619.355	29.61	40.11	4.70
Assam	36.821	42.133	36.397	33.732	425.000	435.169	404.508	15.76	7.58	14.43
Gujarat	117.227	141.996	126.732	128.500	1440.000	1490.131	1399.309	12.04	6.49	21.13
Rajasthan	0.425	0.436	0.189	0.506	5.000	4.726	4.958	130.69	-4.69	2.67
Tamil Nadu	89.456	87.738	88.243	79.504	1108.430	977.427	1010.245	-0.57	-3.25	-1.92
Tripura	123.869	133.352	122.041	124.260	1464.000	1429.910	1331.961	9.27	7.35	7.66
Offshore	1650.754	1485.829	1206.809	1335.136	17501.000	16882.850	16406.327	23.12	2.90	-9.99
Eastern Offshore	65.014	55.772	7.551	50.702	599.000	469.998	212.242	638.60	121.44	-14.22
Western Offshore	1585.740	1430.057	1199.258	1284.434	16902.000	16412.852	16194.085	19.25	1.35	-9.82
2. OIL	243.439	251.024	253.682	225.179	2950.034	2936.551	2837.937	-1.05	3.47	3.12
Assam	227.503	231.908	231.816	207.220	2736.154	2692.671	2620.272	0.04	2.76	1.94
Arunachal Pradesh	1.056	1.007	1.041	0.910	13.680	11.864	11.477	-3.27	3.37	-4.64
Rajasthan	14.880	18.109	20.825	17.050	200.200	232.017	206.189	-13.04	12.53	21.70
3. DGH (Private / JVs)	776.966	526.934	643.211	524.240	8425.439	6872.142	8234.612	-18.08	-16.55	-32.18
Onshore	110.129	95.305	100.016	85.833	1251.305	1152.172	1236.336	-4.71	-6.81	-13.46
Assam	7.024	0.000	0.000	0.000	27.414	0.000	0.000	0.00	0.00	0.00
Arunachal Pradesh	0.748	1.445	1.239	1.330	8.799	15.677	18.082	16.63	-13.30	93.18
Gujarat	4.836	7.683	7.339	7.024	73.232	90.147	90.772	4.69	-0.69	58.87
Rajasthan	96.489	85.322	91.318	76.754	1133.975	1040.596	1126.861	-6.57	-7.66	-11.57
Tamil Nadu	1.032	0.855	0.120	0.725	7.885	5.752	0.621	-	-	-
CBM	160.786	44.852	36.219	45.510	1252.490	564.590	392.867	23.84	43.71	-72.10
Jharkhand (CBM)	0.275	0.297	0.243	0.284	3.240	3.084	2.040	22.22	51.18	7.90
Madhya Pradesh (CBM)	76.000	1.030	0.150	0.650	471.990	6.440	1.404	586.67	358.69	-98.64
West Bengal (CBM)	84.511	43.525	35.826	44.576	777.260	555.066	389.423	21.49	42.54	-48.50
Offshore	506.051	386.777	506.976	392.897	5921.644	5155.380	6605.409	-23.71	-21.95	-23.57
Eastern Offshore	345.536	248.322	315.010	240.642	4109.304	3200.447	4356.128	-21.17	-26.53	-28.13
Gujarat Offshore	3.325	5.871	6.649	5.548	39.150	80.693	68.435	-11.70	17.91	76.57
Western Offshore	157.190	132.584	185.317	146.707	1773.190	1874.240	2180.846	-28.46	-14.06	-15.65
TOTAL (1+2+3)	3116.174	2750.288	2539.681	2522.524	34118.903	31896.672	32249.212	8.29	-1.09	-11.74
CBM	160.786	44.852	36.219	45.510	1252.490	564.590	392.867	23.84	43.71	-72.10
Onshore	798.583	832.830	789.677	748.981	9443.769	9293.852	8844.609	5.46	5.08	4.29
Offshore	2156.805	1872.606	1713.785	1728.033	23422.644	22038.230	23011.736	9.27	-4.23	-13.18

Note: Totals may not tally due to rounding off. *: Provisional. **: Revised

CBM: Coal Bed Methane

Reasons for shortfall are indicated in the note.

MINISTRY OF PETROLEUM & NATURAL GAS

Refinery Production (in terms of crude oil processed) during the month of March, 2017 and cumulatively for the period April-March, 2016-17 vis-à-vis April-March, 2015-16

(in TMT)

Name of Undertaking/Unit	Planned production during the month	Production during the			Cumulative Production			% variation over last year		% variation during the month under review over planned production
		Month under review *	Corresponding month of last year	Preceding month of current year	(April-March)			During the month under review	Upto the end of the period	
					Planned production during current year	Actual production during current year *	Actual production during corresponding period of last year			
(1)	(2)	(3)	(4)	(5)	(5)	(6)	(7)	(8)	(9)	(10)
A. Public Sector	11821.079	12139.815	11951.734	10726.348	135565.028	137394.606	127087.279	1.57	8.11	2.70
1. IOC, Guwahati	83.600	78.659	84.643	67.884	990.000	863.581	903.523	-7.07	-4.42	-5.91
2. IOC, Barauni	532.602	557.719	566.759	487.235	6200.000	6526.045	6544.753	-1.60	-0.29	4.72
3. IOC, Gujarat	1093.134	1234.716	1268.547	1028.183	13350.000	13994.368	13819.915	-2.67	1.26	12.95
4. IOC, Haldia	665.092	715.974	656.282	624.213	7800.000	7689.297	7776.472	9.10	-1.12	7.65
5. IOC, Mathura	713.000	829.847	814.207	721.468	8570.000	9229.999	8860.281	1.92	4.17	16.39
6. IOC, Digboi	59.000	53.406	59.003	42.016	640.000	533.448	561.833	-9.49	-5.05	-9.48
7. IOC, Panipat	1324.010	1394.396	1346.018	1247.567	15200.000	15638.002	15282.368	3.59	2.33	5.32
8. IOC, Bongaigaon	199.648	210.426	201.905	188.788	2350.000	2485.791	2441.663	4.22	1.81	5.40
9. IOC, Paradip	1088.000	1204.907	503.603	929.088	10000.000	8229.991	1816.682	-	-	10.75
Total IOC	5758.086	6280.050	5500.967	5336.442	65100.000	65190.522	58007.490	14.16	12.38	9.06
10. BPCL, Mumbai	686.087	685.501	1174.207	921.007	13160.121	13541.109	13371.259	-41.62	1.27	-0.09
11. BPCL, Kochi	1397.582	1117.711	923.443	1101.208	12090.031	11820.456	10711.549	21.04	10.35	-20.03
Total BPCL	2083.669	1803.212	2097.650	2022.215	25250.152	25361.565	24082.808	-14.04	5.31	-13.46
12. HPCL, Mumbai	685.410	760.026	775.722	683.974	7800.185	8510.319	8013.204	-2.02	6.20	10.89
13. HPCL, Visakh	807.589	861.304	839.806	772.314	9000.107	9335.237	9220.444	2.56	1.24	6.65
Total HPCL	1492.999	1621.330	1615.528	1456.288	16800.292	17845.556	17233.648	0.36	3.55	8.60
14. CPCL, Manali	760.000	701.619	901.160	433.916	9650.000	9721.636	9100.137	-22.14	6.83	-7.68
15. CPCL, CBR	51.106	50.984	57.749	37.432	599.999	530.793	543.564	-11.71	-2.35	-0.24
Total CPCL	811.106	752.603	958.909	471.348	10249.999	10252.429	9643.701	-21.51	6.31	-7.21
16. NRL, Numaligarh	221.166	229.507	236.144	210.121	2670.000	2693.701	2520.267	-2.81	6.88	3.77
17. MRPL, Mangalore	1450.000	1445.663	1534.831	1222.965	15450.000	15965.195	15531.993	-5.81	2.79	-0.30
18. ONGC, Tatipaka	4.053	7.450	7.706	6.969	44.585	85.638	67.372	-3.32	27.11	83.81
B. Joint Venture Sector	948.554	1347.743	1574.898	1315.900	14999.995	16881.517	17115.511	-14.42	-1.37	42.08
19. BORL, Bina	525.000	618.666	638.338	480.662	6000.000	6360.060	6402.206	-3.08	-0.66	17.84
20. HMEL, GGSR, Bhatinda	423.554	729.077	936.560	835.238	8999.995	10521.457	10713.306	-22.15	-1.79	72.13
C. Private Sector	7756.772	7825.352	7856.435	7007.795	89852.659	91092.765	88662.008	-0.40	2.74	0.88
21. RIL, Jamnagar	2815.466	2784.786	2815.466	2504.839	32428.383	32823.151	32428.383	-1.09	1.22	-1.09
22. RIL, SEZ	3269.405	3279.758	3269.405	2907.598	37132.632	37350.720	37132.632	0.32	0.59	0.32
Total RIL	6084.871	6064.544	6084.871	5412.437	69561.015	70173.871	69561.015	-0.33	0.88	-0.33
23. EOL, Vadinar	1671.901	1760.808	1771.564	1595.358	20291.644	20918.894	19100.993	-0.61	9.52	5.32
TOTAL(A+B+C)	20526.405	21312.910	21383.068	19050.043	240417.682	245368.887	232864.798	-0.33	5.37	3.83

Note: Totals may not tally due to rounding off. *: Provisional.

Reasons for shortfall are indicated in the note.

MINISTRY OF PETROLEUM & NATURAL GAS

(Para 3.4)

Refinery-wise Capacity Utilisation during the month of March, 2017 and cumulatively for the period April-March, 2016-17 vis-à-vis April-March, 2015-16

(in TMT)

Name of Undertaking/Unit	March,2017			March,2016			Cumulative (April - March)					
	Prorated Installed Capacity	Actual Crude T'put *	% Utilisation of Installed Capacity	Prorated Installed Capacity	Actual Crude T'put	% Utilisation of Installed Capacity	2016-17			2015-16		
							Prorated Installed Capacity	Actual Crude T'put *	% Utilisation of Installed Capacity	Prorated Installed Capacity	Actual Crude T'put	% Utilisation of Installed Capacity
(1)	(2)	(3)	(4)	(5)	(6)	(7)	(8)	(9)	(10)	(11)	(12)	(13)
A. Public Sector	11471.00	12139.82	105.83	10170.00	11951.73	117.52	135066.00	137394.61	101.72	120066.00	127087.28	105.85
1. IOC, Guwahati	85.00	78.66	92.54	85.00	84.64	99.58	1000.00	863.58	86.36	1000.00	903.52	90.35
2. IOC, Barauni	510.00	557.72	109.36	508.00	566.76	111.57	6000.00	6526.05	108.77	6000.00	6544.75	109.08
3. IOC, Gujarat	1164.00	1234.72	106.08	1160.00	1268.55	109.36	13700.00	13994.37	102.15	13700.00	13819.92	100.88
4. IOC, Haldia	637.00	715.97	112.40	635.00	656.28	103.35	7500.00	7689.30	102.52	7500.00	7776.47	103.69
5. IOC, Mathura	679.00	829.85	122.22	678.00	814.21	120.09	8000.00	9230.00	115.37	8000.00	8860.28	110.75
6. IOC, Digboi	55.00	53.41	97.10	55.00	59.00	107.28	650.00	533.45	82.07	650.00	561.83	86.44
7. IOC, Panipat	1274.00	1394.40	109.45	1270.00	1346.02	105.99	15000.00	15638.00	104.25	15000.00	15282.37	101.88
8. IOC, Bongaigaon	200.00	210.43	105.21	199.00	201.91	101.46	2350.00	2485.79	105.78	2350.00	2441.66	103.90
9. IOC, Paradip	1274.00	1204.91	94.58	0.00	503.60	0.00	15000.00	8229.99	54.87	0.00	1816.68	0.00
Total IOC	5877.00	6280.05	106.86	4591.00	5500.97	119.82	69200.00	65190.52	94.21	54200.00	58007.49	107.02
10. BPCL, Mumbai	1019.00	685.50	67.27	1016.00	1174.21	115.57	12000.00	13541.11	112.84	12000.00	13371.26	111.43
11. BPCL, Kochi	807.00	1117.71	138.50	805.00	923.44	114.71	9500.00	11820.46	124.43	9500.00	10711.55	112.75
Total BPCL	1826.00	1803.21	98.75	1821.00	2097.65	115.19	21500.00	25361.56	117.96	21500.00	24082.81	112.01
12. HPCL, Mumbai	552.00	760.03	137.69	551.00	775.72	140.78	6500.00	8510.32	130.93	6500.00	8013.20	123.28
13. HPCL, Visakh	705.00	861.30	122.17	703.00	839.81	119.46	8300.00	9335.24	112.47	8300.00	9220.44	111.09
Total HPCL	1257.00	1621.33	128.98	1254.00	1615.53	128.83	14800.00	17845.56	120.58	14800.00	17233.65	116.44
14. CPCL, Manali	892.00	701.62	78.66	889.00	901.16	101.37	10500.00	9721.64	92.59	10500.00	9100.14	86.67
15. CPCL, CBR	85.00	50.98	59.98	85.00	57.75	67.94	1000.00	530.79	53.08	1000.00	543.56	54.36
Total CPCL	977.00	752.60	77.03	974.00	958.91	98.45	11500.00	10252.43	89.15	11500.00	9643.70	83.86
16. NRL, Numaligarh	255.00	229.51	90.00	254.00	236.14	92.97	3000.00	2693.70	89.79	3000.00	2520.27	84.01
17. MRPL, Mangalore	1274.00	1445.66	113.47	1270.00	1534.83	120.85	15000.00	15965.20	106.43	15000.00	15531.99	103.55
18. ONGC, Tatipaka	6.00	7.45	124.17	6.00	7.71	128.44	66.00	85.64	129.75	66.00	67.37	102.08
B. Joint Venture Sector	1274.00	1347.74	105.79	1270.00	1574.90	124.01	15000.00	16881.52	112.54	15000.00	17115.51	114.10
19. BORL, Bina	510.00	618.67	121.31	508.00	638.34	125.66	6000.00	6360.06	106.00	6000.00	6402.21	106.70
20. HMEL, GGSR, Bhatinda	764.00	729.08	95.43	762.00	936.56	122.91	9000.00	10521.46	116.91	9000.00	10713.31	119.04
C. Private Sector	6795.00	7825.35	115.16	6776.00	7856.44	115.95	80000.00	91092.76	113.87	80000.00	88662.01	110.83
21. RIL, Jamnagar	2803.00	2784.79	99.35	2795.00	2815.47	100.73	33000.00	32823.15	99.46	33000.00	32428.38	98.27
22. RIL, SEZ	2293.00	3279.76	143.03	2287.00	3269.41	142.96	27000.00	37350.72	138.34	27000.00	37132.63	137.53
Total RIL	5096.00	6064.54	119.01	5082.00	6084.87	119.73	60000.00	70173.87	116.96	60000.00	69561.01	115.94
23. EOL, Vadinar	1699.00	1760.81	103.64	1694.00	1771.56	104.58	20000.00	20918.89	104.59	20000.00	19100.99	95.50
TOTAL(A+B+C)	19540.00	21312.91	109.07	18216.00	21383.07	117.39	230066.00	245368.89	106.65	215066.00	232864.80	108.28

*: Provisional.

MINISTRY OF PETROLEUM & NATURAL GAS

Production of Petroleum Products during the month of March 2017 and cumulatively for the period April-March, 2016-17 vis-à-vis April-March 2015-16

(in TMT)

Name of Undertaking/Unit	Planned production during the month	Production during the			Cumulative Production			% variation over last year		% variation during the month under review over planned production
		Month under review *	Corresponding month of last year	Preceding month of current year **	(April-March)			During the month under review	Upto the end of the period	
					Planned production during current year	Actual production during current year**	Actual production during corresponding period of last year**			
(1)	(2)	(3)	(4)	(5)	(5)	(6)	(7)	(8)	(9)	(10)
I. Refinery										
A. Public Sector	11113.157	11675.905	11658.031	10174.319	126963.543	129214.475	120227.487	0.15	7.47	5.06
1. IOC, Guwahati	88.124	102.078	105.445	93.852	1032.800	1121.191	1103.385	-3.19	1.61	15.84
2. IOC, Barauni	497.310	483.039	535.785	429.246	5726.300	5881.053	6079.438	-9.84	-3.26	-2.87
3. IOC, Gujarat	1029.590	1185.235	1215.463	974.082	12672.700	13105.684	13246.411	-2.49	-1.06	15.12
4. IOC, Haldia	621.150	664.199	625.922	563.641	7151.500	6981.925	7132.656	6.12	-2.11	6.93
5. IOC, Mathura	710.583	842.432	781.633	671.373	8328.500	8915.509	8639.782	7.78	3.19	18.56
6. IOC, Digboi	59.486	51.827	56.592	42.060	642.400	541.850	540.562	-8.42	0.24	-12.88
7. IOC, Panipat	1326.437	1475.973	1449.961	1253.048	15161.600	15832.960	15500.615	1.79	2.14	11.27
8. IOC, Bongaigaon	182.486	229.019	211.819	169.938	2155.300	2272.780	2252.916	8.12	0.88	25.50
9. IOC, Paradip	982.700	1045.768	555.239	797.099	8750.000	6919.801	1106.677	-	-	6.42
Total IOC	5497.865	6079.570	5537.859	4994.339	61621.100	61572.753	55602.442	9.78	10.74	10.58
10. BPCL, Mumbai	652.474	656.644	1140.353	877.565	12612.658	13012.535	12801.609	-42.42	1.65	0.64
11. BPCL, Kochi	1301.541	1088.922	889.900	1072.969	11142.832	11193.909	10163.514	22.36	10.14	-16.34
Total BPCL	1954.015	1745.566	2030.253	1950.534	23755.490	24206.444	22965.123	-14.02	5.41	-10.67
12. HPCL, Mumbai	632.775	712.258	726.528	657.064	7201.950	7952.184	7468.423	-1.96	6.48	12.56
13. HPCL, Visakh	742.789	851.618	823.681	725.215	8281.666	8626.922	8558.045	3.39	0.80	14.65
Total HPCL	1375.564	1563.876	1550.209	1382.279	15483.616	16579.106	16026.469	0.88	3.45	13.69
14. CPCL, Manali	691.770	715.979	839.708	406.371	8744.310	8959.778	8330.449	-14.73	7.55	3.50
15. CPCL, CBR	51.457	50.976	57.784	37.428	604.208	532.237	550.183	-11.78	-3.26	-0.93
Total CPCL	743.227	766.955	897.492	443.799	9348.518	9492.015	8880.632	-14.54	6.88	3.19
16. NRL, Numaligarh	218.486	215.533	248.129	205.235	2645.319	2653.452	2520.804	-13.14	5.26	-1.35
17. MRPL, Mangalore	1320.000	1297.166	1386.538	1191.401	14065.500	14628.538	14165.815	-6.45	3.27	-1.73
18. ONGC, Tatipaka	4.000	7.239	7.551	6.732	44.000	82.167	66.202	-4.13	24.12	80.98
B. Joint Venture Sector	879.196	1331.408	1564.500	1277.276	14010.607	15727.709	15945.338	-14.90	-1.36	51.43
19. BOREL, Bina	484.100	526.723	636.141	462.077	5533.200	5766.545	5916.089	-17.20	-2.53	8.80
20. HMEL, GGSR, Bhatinda	395.096	804.685	928.359	815.199	8477.407	9961.164	10029.249	-13.32	-0.68	103.67
C. Private Sector	7718.144	8446.881	7846.003	7261.025	93022.817	94015.330	91734.188	7.66	2.49	9.44
21. RIL, Jamnagar	2637.898	2821.582	2637.898	2426.904	32330.570	32705.090	32330.570	6.96	1.16	6.96
22. RIL, SEZ	3464.866	3829.832	3464.866	3287.842	41088.715	41213.847	41088.715	10.53	0.30	10.53
Total RIL	6102.764	6651.414	6102.764	5714.746	73419.285	73918.937	73419.285	8.99	0.68	8.99
23. EOL, Vadinar	1615.380	1795.467	1743.239	1546.279	19603.532	20096.393	18314.903	3.00	9.73	11.15
TOTAL(A+B+C)	19710.497	21454.194	21068.534	18712.620	233996.967	238957.514	227907.013	1.83	4.85	8.85
II. Fractionators										
ONGC	290.734	283.569	232.771	253.841	3010.980	3148.675	2886.467	21.82	9.08	-2.46
OIL	3.850	2.920	3.601	2.716	42.000	34.580	41.030	-18.91	-15.72	-24.16
GAIL	91.794	90.809	89.938	88.641	1025.037	1111.083	1088.779	0.97	2.05	-1.07
D. Total Fractionators	386.379	377.298	326.310	345.198	4078.017	4294.338	4016.276	15.63	6.92	-2.35
Grand Total (A+B+C+D)	20096.876	21831.493	21394.844	19057.818	238074.985	243251.852	231923.289	2.04	4.88	8.63

Note: Totals may not tally due to rounding off.

*: Provisional.

**:Revised