

**Government of India**  
**Ministry of Petroleum and Natural Gas**  
**Economic & Statistics Division**

\*\*\*\*\*

New Delhi  
Dated the 21<sup>st</sup> June, 2018

**Monthly Production Report**  
**May, 2018**

**Crude Oil**

1. **Crude oil production<sup>1</sup>** during May, 2018 was 3007.84 TMT which is 1.38% lower than target and 2.95% lower when compared with May 2017. Cumulative crude oil production during April-May, 2018 was 5922.84 TMT which is 0.61% lower than target for the period and 1.92% lower than production during corresponding period of last year. Unit-wise and State-wise crude oil production is given at **Annexure-I**. Unit-wise crude oil production for the month of May, 2018 and cumulatively for the period April-May, 2018 vis-à-vis same period of last year has been shown in Table-1 and month-wise in Figure-1.

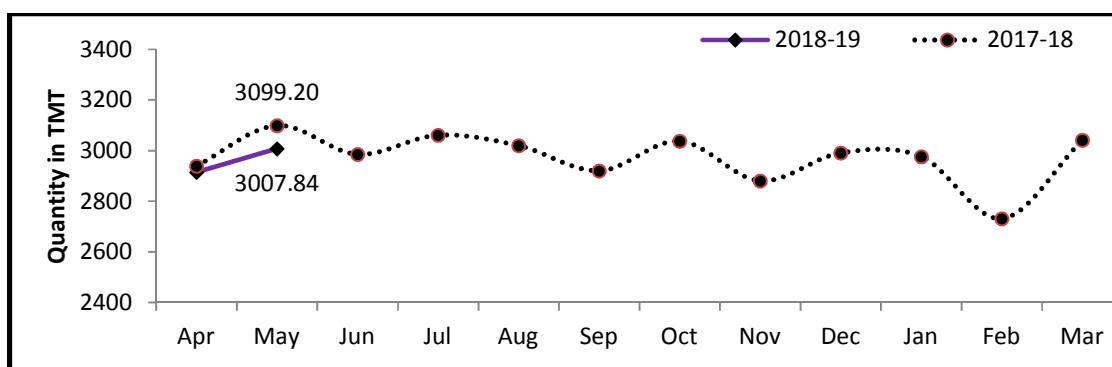
**Table-1: Crude Oil Production (in TMT)**

Oil Company	Target	May (Month)				April-May (Cumulative)			
	2018-19 (Apr-Mar)	2018-19		2017-18	% over last year	2018-19		2017-18	% over last year
		Target	Prod.*	Prod.		Target	Prod.*	Prod.	
ONGC	23040.00	1874.14	1840.93	1934.17	95.18	3661.62	3618.26	3781.29	95.69
OIL	3738.00	297.32	285.02	288.02	98.96	577.73	559.36	561.70	99.58
PSC Fields	10233.60	878.42	881.89	877.00	100.56	1719.56	1745.23	1695.51	102.93
<b>Total</b>	<b>37011.60</b>	<b>3049.88</b>	<b>3007.84</b>	<b>3099.20</b>	<b>97.05</b>	<b>5958.91</b>	<b>5922.84</b>	<b>6038.50</b>	<b>98.08</b>

Note: Totals may not tally due to rounding off.

\*: Provisional

**Figure-1: Monthly Crude Oil Production**



<sup>1</sup>Including condensate

Unit-wise production details with reasons for shortfall are as under:

- 1.1 Crude oil production by **ONGC** during May, 2018 was 1840.93 TMT which is 1.77% lower than the monthly target and 4.82% lower when compared with May, 2017. Cumulative crude oil production by ONGC during April-May, 2018 was 3618.26 TMT which is 1.18% lower than target for the period and lower by 4.31% than production during corresponding period of last year. Shortfall in production is largely attributable to closure of wells to facilitate activities the under project 'Life extension of well platform'.
- 1.2 Crude oil production by **OIL** during May, 2018 was 285.02 TMT which is 4.14% lower than monthly target and 1.04% lower when compared with May, 2017. Cumulative crude oil production by OIL during April-May, 2018 was 559.36 TMT which is 3.18% lower than target for the period and 0.42% lower than production during the corresponding period of last year. Major reason for lower production is less than planned contribution from work over wells and drilling wells.
- 1.3 Crude oil production by **Pvt/JVs** during May, 2018 was 881.89 TMT which is 0.4% higher than the monthly target and 0.56% higher than May, 2017. Cumulative crude oil production by Pvt/JVs during April-May, 2018 was 1745.23 TMT which is 1.49% higher than target for the period and 2.93% higher than the production during the corresponding period of last year.

## Natural Gas

2. **Natural gas production** during May, 2018 was 2728.04 MMSCM which is 7.29% lower than the target for the month and 1.47% lower when compared with May, 2017. Cumulative natural gas production during April-May, 2018 was 5391.01 MMSCM which is 6.13% lower than target for the period but 1.67% higher than the production during corresponding period of last year. Unit-wise and state-wise natural gas production is given at **Annexure-II**. Unit-wise natural gas production for the month of May, 2018 and cumulatively for the period April-May, 2018 vis-à-vis same period of last year has been shown in Table-2 and month-wise in Figure-2.

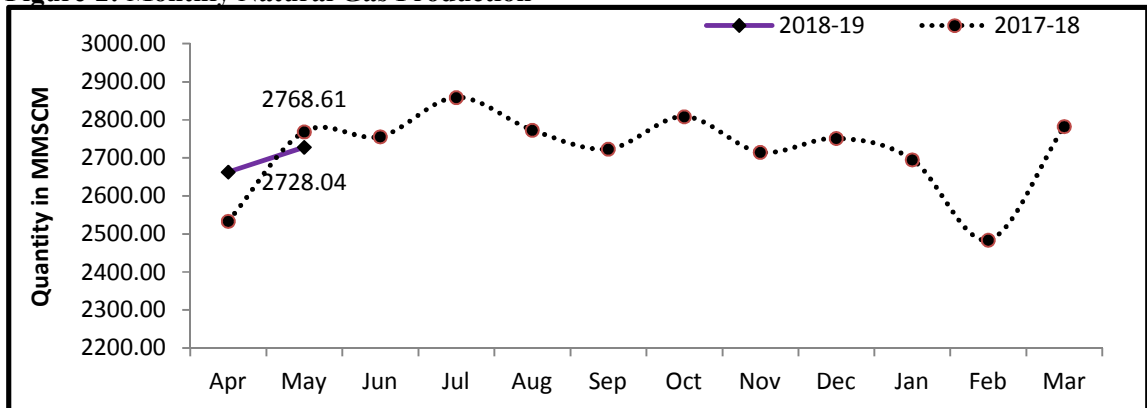
**Table-2: Natural Gas Production (MMSCM)**

Oil Company	Target	May (Month)				April-May (Cumulative)			
	2018-19 (Apr-Mar)	2018-19		2017-18	% over last year	2018-19		2017-18	% over last year
		Target	Prod.*	Prod.		Target	Prod.*	Prod.	
ONGC	25981.00	2115.09	1981.60	1963.36	100.93	4140.23	3953.64	3754.34	105.31
OIL	3120.00	266.26	227.44	244.89	92.88	520.93	448.86	486.17	92.33
PSC Fields	6498.11	561.05	519.00	560.36	92.62	1081.90	988.51	1061.75	93.10
<b>Total</b>	<b>35599.11</b>	<b>2942.40</b>	<b>2728.04</b>	<b>2768.61</b>	<b>98.53</b>	<b>5743.06</b>	<b>5391.01</b>	<b>5302.25</b>	<b>101.67</b>

Note: Totals may not tally due to rounding off.

\*: Provisional

**Figure-2: Monthly Natural Gas Production**



2.1 Natural gas production by **ONGC** during May, 2018 was 1981.60 MMSCM which is 6.31% lower than the monthly target but 0.93% higher when compared with May, 2017. Cumulative natural gas production by ONGC during April-May, 2018 was 3953.64 MMSCM which is 4.51% lower than the cumulative target but 5.31% higher than the production during the corresponding period of the last year.

2.2 Natural gas production by **OIL** during May, 2018 was 227.44 MMSCM which is 14.58% lower than the monthly target and 7.12% lower than May, 2017. Cumulative natural gas production by OIL during April-May, 2018 was 448.86 MMSCM which is 13.84% lower than the cumulative target and 7.67% lower than the production during the corresponding period of last year. Reasons for shortfall in production are as under:

- Less well head production potential of high producing wells of Deohal area, due to corrosion of downhole production tubing.
- Low upliftment of gas by tea gardens of Moran area.

2.3 Natural gas production by **Pvt/JVs** during May, 2018 was 519.0 MMSCM which is 7.49% lower than the monthly target and 7.38% lower when compared with May, 2017. Cumulative natural gas production by Pvt/JVs during April-May, 2018 was 988.51 MMSCM which is 8.63% lower than the cumulative target and 6.90% lower than the production during the corresponding period of last year. Reasons for shortfall in production are as under:

- KG-DWN-98/3 (RIL): Closure of 2 wells in D1D3 and 1 well in MA field. Well B6 ceased to flow on 30.04.2018 due to low reservoir pressure.
- Raniganj East (Essar): Few wells closed for planned maintenance and refrac jobs. Major customer 'Matix' under operational shutdown.
- Sohagpur West (RIL): Underperformance of CBM wells.

### 3. Refinery Production (in terms of crude oil processed)

**Refinery production** during May, 2018 was 22241.10 TMT which is 1.88% higher than the target for the month and 6.79% higher when compared with May, 2017. Cumulative production during April-May, 2018 was 42093.93 TMT which is 0.21% lower than the target for the period and 3.04% higher than the production during corresponding period of last year. Unit-wise production is given at **Annexure-III**. Company-wise production for the month of May, 2018 and cumulatively for the period April-May, 2018 vis-à-vis same period of last year has been shown in Table-3 and month-wise in Figure-3.

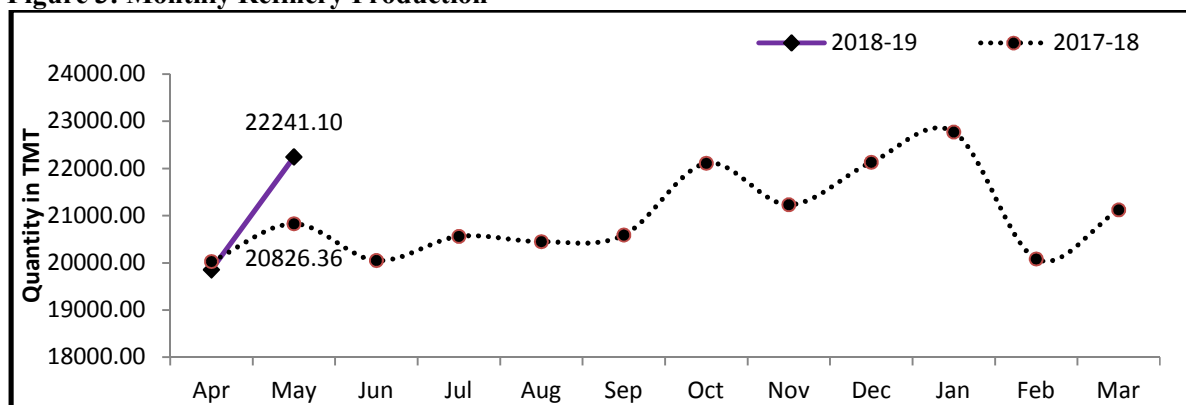
**Table 3: Refinery Production (TMT)**

Oil Company	Target	May (Month)				April-May (Cumulative)			
	2018-19 (Apr-Mar)	2018-19		2017-18	% over last year	2018-19		2017-18	% over last year
		Target	Prod.*	Prod.		Target	Prod.*	Prod.	
<b>CPSE</b>	<b>147759</b>	<b>12679.65</b>	<b>12792.67</b>	<b>12452.68</b>	<b>102.73</b>	<b>24175.46</b>	<b>24427.92</b>	<b>23619.12</b>	103.42
IOCL	71150	6350.33	6285.17	6259.08	100.42	11568.98	11595.05	11791.40	98.33
BPCL	29000	2369.88	2680.43	2123.81	126.21	4765.71	5191.47	4094.70	126.79
HPCL	18000	1554.71	1546.92	1553.70	99.56	3059.27	3014.01	3016.53	99.92
CPCL	10500	907.50	841.22	904.14	93.04	1795.00	1703.48	1625.05	104.83
NRL	2850	242.05	213.79	239.58	89.24	476.30	438.24	470.47	93.15
MRPL	16200	1250.00	1219.28	1365.16	89.31	2500.00	2473.05	2607.91	94.83
ONGC	59	5.18	5.87	7.21	81.37	10.19	12.61	13.07	96.47
<b>JVs</b>	<b>17240</b>	<b>1521.00</b>	<b>1691.43</b>	<b>635.49</b>	<b>266.16</b>	<b>2908.00</b>	<b>3192.08</b>	<b>2007.93</b>	<b>158.97</b>
BORL	6400	600.00	640.08	635.49	100.72	1095.00	1102.43	1186.29	92.93
HMEL	10840	921.00	1051.35	0.00	-	1813.00	2089.65	821.64	254.33
<b>Private</b>	<b>88896</b>	<b>7630.47</b>	<b>7757.00</b>	<b>7738.20</b>	<b>100.24</b>	<b>15097.95</b>	<b>14473.94</b>	<b>15225.85</b>	<b>95.06</b>
RIL	70470	5963.14	5967.28	5963.14	100.07	11763.29	10954.38	11763.29	93.12
EOL	18426	1667.33	1789.72	1775.05	100.83	3334.67	3519.55	3462.57	101.65
<b>TOTAL</b>	<b>253895</b>	<b>21831.13</b>	<b>22241.10</b>	<b>20826.36</b>	<b>106.79</b>	<b>42181.42</b>	<b>42093.93</b>	<b>40852.90</b>	<b>103.04</b>

Note: Totals may not tally due to rounding off.

\*: Provisional

**Figure 3: Monthly Refinery Production**



3.1 **CPSE Refineries' production** during May, 2018 was 12792.67 TMT which is 0.89% higher than the target for the month and 2.73% higher when compared with May, 2017. Cumulative production by CPSE refineries during April-May, 2018 was 24427.92 TMT

which is 1.04% higher than the target for the period and 3.42% higher than the production during corresponding period of last year. Reasons for shortfall of refinery production in some CPSE refineries are as under:

- ❖ IOCL, Paradip: Throughput lower due to RCO pump high vibration issue.
- ❖ IOCL, Gujarat: Throughput lower due to HGU interruption.
- ❖ IOCL, Haldia: Throughput lower due to DHDS shutdown for catalyst change.
- ❖ HPCL, Visakh: Throughput lower due to unplanned CDU shutdown.
- ❖ NRL, Numaligarh: Throughput lower due DCU shutdown on account of increase in furnace pressure leading to VR ullage constraint and thereby lesser crude throughput.
- ❖ MRPL, Mangalore: Crude cut for the month due to unprecedented heavy rain fall on 29<sup>th</sup> May, 18 resulted in submerging of drives in Oil Movement & Storage (OM&S) and effluent treatment plants. Submergence of drives in OM&S has affected the crude & secondary units processing rates.

3.2 **Production in JV refineries** during May, 2018 was 1691.43 TMT which is 11.20% higher than the target for the month and 166.16% higher when compared with May, 2017. Cumulative production by JVs refineries during April-May, 2018 was 3192.08 TMT which is 9.77% higher than the target for the period but 58.97% higher than the production during corresponding period of last year. The major reason for high variation in production was major turnaround underway in HMEL refinery during April - June, 2017.

3.3 **Production in private refineries** during May, 2018 was 7757.0 TMT which is higher by 1.66% than the target for the month and 0.24% higher when compared with May, 2017. Cumulative production by private refineries during April-May, 2018 was 14473.94 TMT which is 4.13% lower than the target for the period and lower by 4.94% compared to production during corresponding period of last year.

3.4 Refinery-wise details of the capacity utilization and production of petroleum products during the month of May, 2018 and cumulatively for the period April-May, 2018 vis-à-vis April-May, 2017 are given at **Annexures - IV and V** respectively.

\*\*\*\*\*

**MINISTRY OF PETROLEUM & NATURAL GAS**

**Annexure-I**

**Crude Oil Production during the month of May, 2018 and cumulatively for the period April-May, 2018 vis-à-vis April-May, 2017**

**(Para 1)**

(Qty: '000' Tonnes)

Name of Undertaking/Unit/State	Planned production during the month*	Production during the			Cumulative Production			% variation over last year		% variation during the month under review over planned production
		Month under review *	Corresponding month of last year **	Preceding month of current year **	(April-May)			During the month under review	Upto the end of the period	
					Planned production during current year*	Actual production during current year *	Actual production during corresponding period of last year **			
(1)	(2)	(3)	(4)	(5)	(6)	(7)	(8)	(9)	(10)	(11)
<b>1. ONGC</b>	<b>1874.14</b>	<b>1840.93</b>	<b>1934.17</b>	<b>1777.33</b>	<b>3661.62</b>	<b>3618.26</b>	<b>3781.29</b>	<b>-4.82</b>	<b>-4.31</b>	<b>-1.77</b>
<b>Onshore</b>	<b>516.00</b>	<b>515.02</b>	<b>513.02</b>	<b>496.08</b>	<b>1013.11</b>	<b>1011.10</b>	<b>1011.59</b>	<b>0.39</b>	<b>-0.05</b>	<b>-0.19</b>
Andhra Pradesh	31.52	25.52	28.08	25.46	59.85	50.98	57.03	-9.12	4.13	-19.04
Assam ^	84.53	83.13	83.81	80.84	166.08	163.97	163.84	-0.81	0.08	-1.65
Gujarat	382.10	382.89	380.15	368.11	751.88	751.00	748.74	0.72	0.30	0.21
Tamil Nadu	17.85	23.48	20.98	21.67	35.30	45.15	41.97	11.91	7.56	31.49
<b>Offshore</b>	<b>1358.13</b>	<b>1325.91</b>	<b>1421.15</b>	<b>1281.24</b>	<b>2648.51</b>	<b>2607.16</b>	<b>2769.70</b>	<b>-6.70</b>	<b>-5.87</b>	<b>-2.37</b>
Eastern Offshore	0.70	0.99	0.70	1.16	1.28	2.15	1.48	40.65	44.81	41.02
Western Offshore	1245.13	1199.03	1302.47	1151.78	2427.63	2350.81	2542.63	-7.94	-7.54	-3.70
Condensates	112.31	125.89	117.98	128.31	219.60	254.20	225.58	6.70	12.69	12.09
<b>2. OIL (Onshore)</b>	<b>297.32</b>	<b>285.02</b>	<b>288.02</b>	<b>274.33</b>	<b>577.73</b>	<b>559.36</b>	<b>561.70</b>	<b>-1.04</b>	<b>-0.42</b>	<b>-4.14</b>
Assam	296.58	284.19	287.27	273.61	576.24	557.80	559.89	-1.07	-0.37	-4.18
Arunachal Pradesh	0.56	0.59	0.64	0.57	1.12	1.16	1.26	-7.80	-8.00	6.10
Rajasthan (heavy oil)	0.19	0.24	0.11	0.15	0.37	0.39	0.55	120.87	-28.42	29.52
<b>3. Private / JVC</b>	<b>878.42</b>	<b>881.89</b>	<b>877.00</b>	<b>863.33</b>	<b>1719.56</b>	<b>1745.23</b>	<b>1695.51</b>	<b>0.56</b>	<b>2.93</b>	<b>0.40</b>
<b>Onshore</b>	<b>719.85</b>	<b>717.80</b>	<b>700.79</b>	<b>715.36</b>	<b>1416.28</b>	<b>1433.17</b>	<b>1377.75</b>	<b>2.43</b>	<b>4.02</b>	<b>-0.28</b>
Andhra Pradesh	3.17	<b>0.46</b>	0.00	<b>0.68</b>	6.24	1.15	0.00	-	-	<b>-85.37</b>
Arunachal Pradesh	3.68	3.24	3.80	3.16	7.23	6.40	7.57	-14.72	-15.47	-11.98
Assam	3.53	2.16	0.00	1.22	6.95	3.38	0.00	-	-	-38.91
Gujarat	15.45	12.15	11.61	12.05	30.23	24.20	22.50	4.61	7.55	-21.42
Rajasthan	683.59	693.24	677.99	691.73	1345.12	1384.96	1334.29	2.25	3.80	1.41
Tamil Nadu	10.42	6.56	7.39	6.52	20.51	13.08	13.39	-11.18	-2.34	-37.05
<b>Offshore</b>	<b>158.57</b>	<b>164.09</b>	<b>176.22</b>	<b>147.97</b>	<b>303.28</b>	<b>312.06</b>	<b>317.76</b>	<b>-6.88</b>	<b>-1.79</b>	<b>3.48</b>
Eastern Offshore	56.36	49.70	78.79	59.58	112.03	109.28	149.67	-36.92	-26.98	-11.81
Gujarat Offshore	49.38	61.25	32.30	49.69	97.93	110.94	59.30	89.61	87.09	24.03
Western Offshore	52.83	53.14	65.12	38.70	93.32	91.84	108.80	-18.41	-15.59	0.58
<b>GRAND TOTAL (1+2+3)</b>	<b>3049.88</b>	<b>3007.84</b>	<b>3099.20</b>	<b>2915.00</b>	<b>5958.91</b>	<b>5922.84</b>	<b>6038.50</b>	<b>-2.95</b>	<b>-1.92</b>	<b>-1.38</b>
Onshore	1533.17	1517.84	1501.83	1485.78	3007.13	3003.62	2951.04	1.07	1.78	-1.00
Offshore	1516.71	1490.00	1597.37	1429.22	2951.79	2919.22	3087.46	-6.72	-5.45	-1.76

Note: Totals may not tally due to rounding off figures.

^: Includes crude oil production of Tripura

\*: Provisional. \*\*: Revised

Reasons for shortfall are indicated in the note.

**MINISTRY OF PETROLEUM & NATURAL GAS**

**Annexure-II**

**Natural Gas Production during the month of May, 2018 and cumulatively for the period April-May, 2018 vis-à-vis April-May, 2017**

**(Para 2)**

(Qty: Million Cubic Meters)

Name of Undertaking/Unit/State	Planned production during the month*	Production during the			Cumulative Production (April-May)			% variation over last year		% variation during the month under review over planned production
		Month under review *	Corresponding month of last year **	Preceding month of current year **	Planned production during current year*	Actual production during current year *	Actual production during corresponding period of last year **	During the month under review	Upto the end of the period	
(1)	(2)	(3)	(4)	(5)	(6)	(7)	(8)	(9)	(10)	(11)
<b>1. ONGC</b>	<b>2115.09</b>	<b>1981.60</b>	<b>1963.36</b>	<b>1972.04</b>	<b>4140.23</b>	<b>3953.64</b>	<b>3754.34</b>	<b>0.93</b>	<b>5.31</b>	<b>-6.31</b>
<b>Onshore</b>	<b>500.70</b>	<b>477.36</b>	<b>475.48</b>	<b>471.03</b>	<b>957.59</b>	<b>948.39</b>	<b>938.61</b>	<b>0.40</b>	<b>1.04</b>	<b>-4.66</b>
Andhra Pradesh	96.50	96.68	72.90	101.01	187.02	197.69	145.06	32.62	36.28	0.19
Assam	39.47	40.59	41.31	39.81	77.63	80.41	81.57	-1.73	-1.43	2.84
Gujarat	133.94	112.92	137.77	110.30	263.42	223.22	271.35	-18.04	-17.74	-15.69
Rajasthan	0.48	0.69	0.49	0.64	0.94	1.33	0.65	38.98	102.95	43.89
Tamil Nadu	99.21	102.42	92.42	99.13	196.01	201.55	188.24	10.82	7.07	3.24
Tripura	131.10	124.07	130.58	120.14	232.57	244.20	251.74	-4.99	-3.00	-5.37
<b>Offshore</b>	<b>1614.39</b>	<b>1504.23</b>	<b>1487.88</b>	<b>1501.02</b>	<b>3182.63</b>	<b>3005.25</b>	<b>2815.73</b>	<b>1.10</b>	<b>6.73</b>	<b>-6.82</b>
Eastern Offshore	135.21	49.17	51.83	62.53	266.29	111.70	103.89	-5.13	7.51	-63.63
Western Offshore	1479.18	1455.06	1436.05	1438.49	2916.34	2893.55	2711.83	1.32	6.70	-1.63
<b>2. OIL</b>	<b>266.26</b>	<b>227.44</b>	<b>244.89</b>	<b>221.42</b>	<b>520.93</b>	<b>448.86</b>	<b>486.17</b>	<b>-7.12</b>	<b>-7.67</b>	<b>-14.58</b>
Assam	247.00	207.68	225.88	202.05	483.00	409.73	448.56	-8.06	-8.66	-15.92
Arunachal Pradesh	1.00	1.02	0.99	0.98	2.00	2.00	1.96	3.01	1.86	1.70
Rajasthan	18.26	18.75	18.02	18.39	35.93	37.14	35.65	4.04	4.16	2.66
<b>3. Private / JVC</b>	<b>561.05</b>	<b>519.00</b>	<b>560.36</b>	<b>469.51</b>	<b>1081.90</b>	<b>988.51</b>	<b>1061.75</b>	<b>-7.38</b>	<b>-6.90</b>	<b>-7.49</b>
<b>Onshore</b>	<b>138.63</b>	<b>144.78</b>	<b>108.19</b>	<b>130.09</b>	<b>284.23</b>	<b>274.87</b>	<b>217.05</b>	<b>33.81</b>	<b>26.64</b>	<b>4.44</b>
Andhra Pradesh	1.23	0.20	0.00	0.34	2.46	0.54	0.00	-	-	-83.52
Assam	30.72	1.90	0.00	1.86	60.46	3.76	0.00	-	-	-93.82
Arunachal Pradesh	0.84	21.58	1.37	12.54	1.65	34.12	2.73	1477.02	1151.31	2473.87
Gujarat	6.14	6.36	6.97	5.86	12.18	12.22	13.62	-8.73	-10.33	3.56
Rajasthan	96.97	113.43	98.88	108.27	202.11	221.70	198.91	14.71	11.46	16.97
Tamil Nadu	2.73	1.31	0.98	1.23	5.37	2.54	1.80	33.95	41.37	-51.98
<b>CBM</b>	<b>132.68</b>	<b>62.65</b>	<b>48.47</b>	<b>62.94</b>	<b>261.08</b>	<b>125.59</b>	<b>94.73</b>	<b>29.25</b>	<b>32.57</b>	<b>-52.78</b>
Jharkhand (CBM)	0.36	0.18	0.38	0.26	0.70	0.44	0.71	-52.67	-38.71	-50.07
Madhya Pradesh (CBM)	79.26	31.69	1.95	31.15	155.97	62.84	4.41	1527.49	1324.99	-60.02
West Bengal (CBM)	53.06	30.78	46.15	31.53	104.40	62.31	89.61	-33.30	-30.47	-41.98
<b>Offshore</b>	<b>289.74</b>	<b>311.58</b>	<b>403.70</b>	<b>276.47</b>	<b>536.59</b>	<b>588.05</b>	<b>749.96</b>	<b>-22.82</b>	<b>-21.59</b>	<b>7.54</b>
Eastern Offshore	134.31	149.56	228.15	157.76	262.21	307.33	456.93	-34.44	-32.74	11.36
Gujarat Offshore	13.20	9.09	7.17	7.63	26.10	16.71	12.22	26.80	36.73	-31.17
Western Offshore	142.24	152.93	168.39	111.09	248.28	264.01	280.81	-9.18	-5.98	7.52
<b>TOTAL (1+2+3)</b>	<b>2942.40</b>	<b>2728.04</b>	<b>2768.61</b>	<b>2662.97</b>	<b>5743.06</b>	<b>5391.01</b>	<b>5302.25</b>	<b>-1.47</b>	<b>1.67</b>	<b>-7.29</b>
CBM	132.68	62.65	48.47	62.94	261.08	125.59	94.73	29.25	32.57	-52.78
Onshore	905.59	849.58	828.56	822.53	1762.76	1672.12	1641.83	2.54	1.84	-6.18
Offshore	1904.14	1815.81	1891.58	1777.49	3719.22	3593.30	3565.69	-4.01	0.77	-4.64

Note: Totals may not tally due to rounding off figures.

\*: Provisional. \*\*: Revised

CBM: Coal Bed Methane production.

Reasons for shortfall are indicated in the note.

**MINISTRY OF PETROLEUM & NATURAL GAS**

Annexure-III

**Crude Oil Processed during the month of May, 2018 and cumulatively for the period April-May, 2018 vis-à-vis April-May, 2017**

(Para 3)

(Qty: '000' Tonnes)

Name of Undertaking/Unit	Planned production during the month*	Production during the			Cumulative Production			% variation over last year		% variation during the month under review over planned production
		Month under review *	Corresponding month of last year	Preceding month of current year **	(April-May)			During the month under	Upto the end of the period	
					Planned production during current year*	Actual production during current year *	Actual production during corresponding period of last year **			
(1)	(2)	(3)	(4)	(5)	(6)	(7)	(8)	(9)	(10)	(11)
<b>A. Public Sector</b>	<b>12679.65</b>	<b>12792.67</b>	<b>12452.68</b>	<b>11635.25</b>	<b>24175.46</b>	<b>24427.92</b>	<b>23619.12</b>	<b>2.73</b>	<b>3.42</b>	<b>0.89</b>
1. IOC, Guwahati	90.00	91.93	86.46	90.00	180.00	181.94	174.05	6.33	4.53	2.15
2. IOC, Barauni	565.89	591.89	533.30	572.55	1113.52	1164.44	1091.58	10.99	6.68	4.59
3. IOC, Gujarat	1270.00	1198.51	1168.87	1244.86	2506.00	2443.36	2294.08	2.54	6.51	-5.63
4. IOC, Haldia	660.00	638.91	707.32	685.30	1335.00	1324.21	1365.95	-9.67	-3.06	-3.20
5. IOC, Mathura	837.37	858.82	825.28	846.66	1677.37	1705.48	1621.36	4.06	5.19	2.56
6. IOC, Digboi	56.00	58.20	54.47	55.82	110.00	114.02	107.61	6.84	5.96	3.93
7. IOC, Panipat	1364.00	1384.82	1402.07	1351.40	2684.00	2736.22	2728.38	-1.23	0.29	1.53
8. IOC, Bongaigaon	186.85	196.57	174.31	184.19	363.87	380.76	374.90	12.78	1.56	5.20
9. IOC, Paradip	1320.22	1265.53	1307.01	279.09	1599.22	1544.62	2033.50	-3.17	-24.04	-4.14
<b>Total IOC</b>	<b>6350.33</b>	<b>6285.17</b>	<b>6259.08</b>	<b>5309.88</b>	<b>11568.98</b>	<b>11595.05</b>	<b>11791.40</b>	<b>0.42</b>	<b>2.13</b>	<b>-1.03</b>
10. BPCL, Mumbai	1069.66	1231.51	1017.87	1246.45	2215.69	2477.96	1974.35	20.99	25.51	15.13
11. BPCL, Kochi	1300.22	1448.93	1105.94	1264.59	2550.03	2713.51	2120.35	31.01	27.97	11.44
<b>Total BPCL</b>	<b>2369.88</b>	<b>2680.43</b>	<b>2123.81</b>	<b>2511.04</b>	<b>4765.71</b>	<b>5191.47</b>	<b>4094.70</b>	<b>26.21</b>	<b>26.79</b>	<b>13.10</b>
12. HPCL, Mumbai	729.57	733.11	719.81	701.93	1435.61	1435.03	1426.65	1.85	0.59	0.48
13. HPCL, Visakh	825.14	813.81	833.89	765.17	1623.67	1578.98	1589.88	-2.41	-0.69	-1.37
<b>Total HPCL</b>	<b>1554.71</b>	<b>1546.92</b>	<b>1553.70</b>	<b>1467.10</b>	<b>3059.27</b>	<b>3014.01</b>	<b>3016.53</b>	<b>-0.44</b>	<b>-0.08</b>	<b>-0.50</b>
14. CPCL, Manali	870.00	806.54	862.55	826.93	1720.00	1633.47	1547.32	-6.49	5.57	-7.29
15. CPCL, CBR	37.50	34.68	41.59	35.33	75.00	70.02	77.73	-16.61	-9.93	-7.51
<b>Total CPCL</b>	<b>907.50</b>	<b>841.22</b>	<b>904.14</b>	<b>862.26</b>	<b>1795.00</b>	<b>1703.48</b>	<b>1625.05</b>	<b>-6.96</b>	<b>4.83</b>	<b>-7.30</b>
16. NRL, Numaligarh	242.05	213.79	239.58	224.45	476.30	438.24	470.47	-10.76	-6.85	-11.68
17. MRPL, Mangalore	1250.00	1219.28	1365.16	1253.77	2500.00	2473.05	2607.91	-10.69	-5.17	-2.46
18. ONGC, Tatipaka	5.18	5.87	7.21	6.75	10.19	12.61	13.07	-18.63	-3.53	13.22
<b>B. Joint Venture</b>	<b>1521.00</b>	<b>1691.43</b>	<b>635.49</b>	<b>1500.66</b>	<b>2908.00</b>	<b>3192.08</b>	<b>2007.93</b>	<b>166.16</b>	<b>58.97</b>	<b>11.20</b>
19. BORL, Bina	600.00	640.08	635.49	462.35	1095.00	1102.43	1186.29	0.72	-7.07	6.68
20. HMEL, GGSR, Bhatinda	921.00	1051.35	0.00	1038.30	1813.00	2089.65	821.64	-	154.33	14.15
<b>C. Private Sector</b>	<b>7630.47</b>	<b>7757.00</b>	<b>7738.20</b>	<b>6716.93</b>	<b>15097.95</b>	<b>14473.94</b>	<b>15225.85</b>	<b>0.24</b>	<b>-4.94</b>	<b>1.66</b>
21. RIL, Jamnagar	2741.83	2782.67	2741.83	2685.82	5407.13	5468.48	5407.13	1.49	1.13	1.49
22. RIL, SEZ	3221.32	3184.62	3221.32	2301.28	6356.16	5485.90	6356.16	-1.14	-13.69	-1.14
<b>Total RIL</b>	<b>5963.14</b>	<b>5967.28</b>	<b>5963.14</b>	<b>4987.10</b>	<b>11763.29</b>	<b>10954.38</b>	<b>11763.29</b>	<b>0.07</b>	<b>-6.88</b>	<b>0.07</b>
23. EOL, Vadinar	1667.33	1789.72	1775.05	1729.84	3334.67	3519.55	3462.57	0.83	1.65	7.34
<b>TOTAL(A+B+C)</b>	<b>21831.13</b>	<b>22241.10</b>	<b>20826.36</b>	<b>19852.83</b>	<b>42181.42</b>	<b>42093.93</b>	<b>40852.90</b>	<b>6.79</b>	<b>3.04</b>	<b>1.88</b>

Note: Totals may not tally due to rounding off figures. \*: Provisional. \*\*: Revised

Reasons for shortfall are indicated in the note.



**MINISTRY OF PETROLEUM & NATURAL GAS**

Annexure-IV

**Refinery-wise Capacity Utilisation during the month of May, 2018 and cumulatively for the period April-May, 2018 vis-à-vis April-May, 2017**

(Para 3.4)

(Qty: '000' Tonnes)

Name of Undertaking/Unit	May, 2018			May, 2017			Cumulative (April - May)					
	Prorated Installed Capacity	Actual Crude T'put *	% Utilisation of Installed Capacity	Prorated Installed Capacity	Actual Crude T'put	% Utilisation of Installed Capacity	2018-19			2017-18		
							Prorated Installed Capacity	Actual Crude T'put *	% Utilisation of Installed Capacity	Prorated Installed Capacity	Actual Crude T'put **	% Utilisation of Installed Capacity
(1)	(2)	(3)	(4)	(5)	(6)	(7)	(8)	(9)	(10)	(11)	(12)	(13)
<b>A. Public Sector</b>	<b>12066.00</b>	<b>12792.67</b>	<b>106.02</b>	<b>11805.00</b>	<b>12452.68</b>	<b>105.49</b>	<b>23743.00</b>	<b>24427.92</b>	<b>102.88</b>	<b>23229.00</b>	<b>23619.12</b>	<b>101.68</b>
1. IOC, Guwahati	85.00	91.93	108.16	85.00	86.46	101.71	167.00	181.94	108.94	167.00	174.05	104.22
2. IOC, Barauni	510.00	591.89	116.06	510.00	533.30	104.57	1003.00	1164.44	116.10	1003.00	1091.58	108.83
3. IOC, Gujarat	1164.00	1198.51	102.96	1164.00	1168.87	100.42	2290.00	2443.36	106.70	2290.00	2294.08	100.18
4. IOC, Haldia	637.00	638.91	100.30	637.00	707.32	111.04	1253.00	1324.21	105.68	1253.00	1365.95	109.01
5. IOC, Mathura	679.00	858.82	126.48	679.00	825.28	121.54	1337.00	1705.48	127.56	1337.00	1621.36	121.27
6. IOC, Digboi	55.00	58.20	105.82	55.00	54.47	99.04	109.00	114.02	104.61	109.00	107.61	98.72
7. IOC, Panipat	1274.00	1384.82	108.70	1274.00	1402.07	110.05	2507.00	2736.22	109.14	2507.00	2728.38	108.83
8. IOC, Bongaigaon	200.00	196.57	98.29	200.00	174.31	87.15	393.00	380.76	96.89	393.00	374.90	95.39
9. IOC, Paradip	1274.00	1265.53	99.33	1274.00	1307.01	0.00	2507.00	1544.62	61.61	2507.00	2033.50	0.00
<b>Total IOC</b>	<b>5877.00</b>	<b>6285.17</b>	<b>106.95</b>	<b>5877.00</b>	<b>6259.08</b>	<b>106.50</b>	<b>11565.00</b>	<b>11595.05</b>	<b>100.26</b>	<b>11565.00</b>	<b>11791.40</b>	<b>101.96</b>
10. BPCL, Mumbai	1019.00	1231.51	120.85	1019.00	1017.87	99.89	2005.00	2477.96	123.59	2005.00	1974.35	98.47
11. BPCL, Kochi	1316.00	1448.93	110.10	1053.00	1105.94	105.03	2590.00	2713.51	104.77	2072.00	2120.35	102.33
<b>Total BPCL</b>	<b>2336.00</b>	<b>2680.43</b>	<b>114.74</b>	<b>2072.00</b>	<b>2123.81</b>	<b>102.50</b>	<b>4596.00</b>	<b>5191.47</b>	<b>112.96</b>	<b>4078.00</b>	<b>4094.70</b>	<b>100.41</b>
12. HPCL, Mumbai	637.00	733.11	115.09	637.00	719.81	113.00	1253.00	1435.03	114.53	1253.00	1426.65	113.86
13. HPCL, Visakh	705.00	813.81	115.43	707.00	833.89	117.95	1387.00	1578.98	113.84	1392.00	1589.88	114.22
<b>Total HPCL</b>	<b>1342.00</b>	<b>1546.92</b>	<b>115.27</b>	<b>1344.00</b>	<b>1553.70</b>	<b>115.60</b>	<b>2641.00</b>	<b>3014.01</b>	<b>114.12</b>	<b>2646.00</b>	<b>3016.53</b>	<b>114.00</b>
14. CPCL, Manali	892.00	806.54	90.42	892.00	862.55	96.70	1755.00	1633.47	93.08	1755.00	1547.32	88.17
15. CPCL, CBR	85.00	34.68	40.80	85.00	41.59	48.93	167.00	70.02	41.93	167.00	77.73	46.55
<b>Total CPCL</b>	<b>977.00</b>	<b>841.22</b>	<b>86.10</b>	<b>977.00</b>	<b>904.14</b>	<b>92.54</b>	<b>1922.00</b>	<b>1703.48</b>	<b>88.63</b>	<b>1922.00</b>	<b>1625.05</b>	<b>84.55</b>
16. NRL, Numaligarh	255.00	213.79	83.84	255.00	239.58	93.95	501.00	438.24	87.47	501.00	470.47	93.91
17. MRPL, Mangalore	1274.00	1219.28	95.70	1274.00	1365.16	107.16	2507.00	2473.05	98.65	2507.00	2607.91	104.03
18. ONGC, Tatipaka	6.00	5.87	97.78	6.00	7.21	120.17	11.00	12.61	114.66	11.00	13.07	118.86
<b>B. Joint Venture</b>	<b>1469.00</b>	<b>1691.43</b>	<b>115.14</b>	<b>1274.00</b>	<b>635.49</b>	<b>49.88</b>	<b>2891.00</b>	<b>3192.08</b>	<b>110.41</b>	<b>2507.00</b>	<b>2007.93</b>	<b>80.09</b>
19. BORL, Bina	510.00	640.08	125.50	510.00	635.49	124.61	1003.00	1102.43	109.91	1003.00	1186.29	118.27
20. HMEL, GGSR, Bhatinda	960.00	1051.35	109.52	764.00	0.00	0.00	1888.00	2089.65	110.68	1504.00	821.64	54.63
<b>C. Private Sector</b>	<b>7491.00</b>	<b>7757.00</b>	<b>103.55</b>	<b>6795.00</b>	<b>7738.20</b>	<b>113.88</b>	<b>14740.00</b>	<b>14473.94</b>	<b>98.19</b>	<b>13370.00</b>	<b>15225.85</b>	<b>113.88</b>
21. RIL, Jamnagar	2803.00	2782.67	99.27	2803.00	2741.83	97.82	5515.00	5468.48	99.16	5515.00	5407.13	98.04
22. RIL, SEZ	2990.00	3184.62	106.51	2293.00	3221.32	140.48	5883.00	5485.90	93.25	4512.00	6356.16	140.87
<b>Total RIL</b>	<b>5792.00</b>	<b>5967.28</b>	<b>103.03</b>	<b>5096.00</b>	<b>5963.14</b>	<b>117.02</b>	<b>11398.00</b>	<b>10954.38</b>	<b>96.11</b>	<b>10027.00</b>	<b>11763.29</b>	<b>117.32</b>
23. EOL, Vadinar	1699.00	1789.72	105.34	1699.00	1775.05	104.48	3342.00	3519.55	105.31	3342.00	3462.57	103.61
<b>TOTAL(A+B+C)</b>	<b>21026.00</b>	<b>22241.10</b>	<b>105.78</b>	<b>19874.00</b>	<b>20826.36</b>	<b>104.79</b>	<b>41374.00</b>	<b>42093.93</b>	<b>101.74</b>	<b>39106.00</b>	<b>40852.90</b>	<b>104.47</b>

Note: Crude throughput in terms of crude oil processed. \*: Provisional. \*\*: Revised

**MINISTRY OF PETROLEUM & NATURAL GAS**

**Production of Petroleum Products during the month of May, 2018 and cumulatively for the period April-May, 2018 vis-à-vis April-May, 2017**

Annexure-V

(Para 3.4)

(Qty: '000' Tonnes)

Name of Undertaking/Unit	Planned production during the month*	Production during the			Cumulative Production			% variation over last year		% variation during the month under review over planned production
		Month under review *	Corresponding month of last year	Preceding month of current year **	(April-May)			During the month under review	Upto the end of the period	
					Planned production during current year*	Actual production during current year*	Actual production during corresponding period of last year**			
(1)	(2)	(3)	(4)	(5)	(6)	(7)	(8)	(9)	(10)	(11)
<b>I. Refinery</b>										
<b>A. Public Sector</b>	<b>11857.51</b>	<b>11923.77</b>	<b>11769.66</b>	<b>10821.77</b>	<b>22622.29</b>	<b>22745.54</b>	<b>22160.91</b>	<b>1.31</b>	<b>2.64</b>	<b>0.56</b>
1. IOC, Guwahati	86.94	103.05	103.05	104.18	173.90	207.22	203.20	0.00	4.76	18.53
2. IOC, Barauni	524.19	549.61	533.91	542.54	1031.16	1092.15	1056.06	2.94	3.42	4.85
3. IOC, Gujarat	1181.91	1134.92	1169.49	1180.69	2317.59	2315.61	2297.27	-2.96	0.80	-3.98
4. IOC, Haldia	583.67	598.12	650.89	641.50	1221.70	1239.63	1256.37	-8.11	-1.33	2.48
5. IOC, Mathura	795.42	831.79	813.16	820.56	1603.88	1652.35	1576.45	2.29	4.81	4.57
6. IOC, Digboi	55.24	59.94	55.06	56.47	108.53	116.41	109.74	8.87	6.08	8.51
7. IOC, Panipat	1382.70	1395.08	1362.13	1351.20	2727.65	2746.28	2648.74	2.42	3.68	0.90
8. IOC, Bongaigaon	171.21	184.41	125.67	157.33	333.29	341.74	279.43	46.74	22.30	7.71
9. IOC, Paradip	1193.45	1143.16	1142.82	185.28	1378.64	1328.44	1831.64	0.03	-27.47	-4.21
<b>Total IOC</b>	<b>5974.72</b>	<b>6000.09</b>	<b>5956.17</b>	<b>5039.74</b>	<b>10896.33</b>	<b>11039.83</b>	<b>11258.90</b>	<b>0.74</b>	<b>-1.95</b>	<b>0.42</b>
10. BPCL, Mumbai	1019.73	1180.07	1011.25	1203.95	2125.57	2384.02	1864.30	16.69	27.88	15.72
11. BPCL, Kochi	1204.21	1226.29	1069.42	1160.74	2358.26	2387.03	2041.51	14.67	16.92	1.83
<b>Total BPCL</b>	<b>2223.94</b>	<b>2406.36</b>	<b>2080.66</b>	<b>2364.69</b>	<b>4483.83</b>	<b>4771.05</b>	<b>3905.82</b>	<b>15.65</b>	<b>22.15</b>	<b>8.20</b>
12. HPCL, Mumbai	686.31	655.27	654.78	659.51	1347.01	1314.78	1300.37	0.07	1.11	-4.52
13. HPCL, Visakh	763.19	762.18	802.78	738.87	1501.44	1501.05	1473.44	-5.06	1.87	-0.13
<b>Total HPCL</b>	<b>1449.50</b>	<b>1417.44</b>	<b>1457.56</b>	<b>1398.38</b>	<b>2848.46</b>	<b>2815.83</b>	<b>2773.82</b>	<b>-2.75</b>	<b>1.51</b>	<b>-2.21</b>
14. CPCL, Manali	785.99	724.22	803.00	709.97	1553.69	1434.19	1365.59	-9.81	5.02	-7.86
15. CPCL, CBR	37.95	34.74	41.98	35.36	75.90	70.10	78.50	-17.24	-10.69	-8.45
<b>Total CPCL</b>	<b>823.94</b>	<b>758.96</b>	<b>844.98</b>	<b>745.33</b>	<b>1629.59</b>	<b>1504.29</b>	<b>1444.09</b>	<b>-10.18</b>	<b>4.17</b>	<b>-7.89</b>
16. NRL, Numaligarh	236.33	215.23	260.15	221.05	465.04	436.29	488.17	-17.26	-10.63	-8.93
17. MRPL, Mangalore	1144.07	1119.95	1163.15	1045.98	2289.21	2165.93	2277.45	-3.71	-4.90	-2.11
18. ONGC, Tatipaka	5.01	5.73	7.00	6.60	9.85	12.33	12.68	-18.17	-2.74	14.48
<b>B. Joint Venture</b>	<b>1417.50</b>	<b>1599.50</b>	<b>588.90</b>	<b>1374.83</b>	<b>2711.87</b>	<b>2974.33</b>	<b>1847.12</b>	<b>171.61</b>	<b>61.03</b>	<b>12.84</b>
19. BORL, Bina	543.60	584.10	593.23	408.05	992.07	992.15	1093.77	-1.54	-9.29	7.45
20. HMEL, GGSR, Bhatinda^	873.90	1015.40	-4.33	966.78	1719.80	1982.18	753.36	-	163.11	16.19
<b>C. Private Sector</b>	<b>8456.12</b>	<b>8376.89</b>	<b>8541.50</b>	<b>7590.44</b>	<b>16067.61</b>	<b>15967.33</b>	<b>16196.62</b>	<b>-1.93</b>	<b>-1.42</b>	<b>-0.94</b>
21. RIL, Jamnagar	2899.26	2844.76	2899.26	2824.23	5428.79	5668.99	5428.79	-1.88	4.42	-1.88
22. RIL, SEZ	3956.20	3825.77	3956.20	3058.15	7437.49	6883.91	7437.49	-3.30	-7.44	-3.30
<b>Total RIL</b>	<b>6855.46</b>	<b>6670.53</b>	<b>6855.46</b>	<b>5882.37</b>	<b>12866.28</b>	<b>12552.90</b>	<b>12866.28</b>	<b>-2.70</b>	<b>-2.44</b>	<b>-2.70</b>
23. EOL, Vadinar	1600.67	1706.37	1686.04	1708.06	3201.33	3414.43	3330.34	1.21	2.52	6.60
<b>TOTAL(A+B+C)</b>	<b>21731.14</b>	<b>21900.16</b>	<b>20900.06</b>	<b>19787.03</b>	<b>41401.78</b>	<b>41687.19</b>	<b>40204.66</b>	<b>4.79</b>	<b>3.69</b>	<b>0.78</b>
<b>II. Fractionators</b>										
ONGC	267.87	279.91	235.60	270.29	522.25	550.20	488.33	18.81	12.67	4.49
OIL	3.28	3.33	0.96	112.46	6.45	6.47	3.75	246.88	72.59	1.68
GAIL	74.50	99.94	99.59	3.14	180.90	212.40	183.68	0.35	15.64	34.15
<b>D. Total Fractionators</b>	<b>345.65</b>	<b>383.18</b>	<b>336.14</b>	<b>385.89</b>	<b>709.60</b>	<b>769.08</b>	<b>675.76</b>	<b>13.99</b>	<b>13.81</b>	<b>10.86</b>
<b>Grand Total (A+B+C+D)</b>	<b>22076.78</b>	<b>22283.34</b>	<b>21236.20</b>	<b>20172.93</b>	<b>42111.37</b>	<b>42456.27</b>	<b>40880.42</b>	<b>4.93</b>	<b>3.85</b>	<b>0.94</b>

Note: Totals may not tally due to rounding off figures. \*: Provisional. \*\*: Revised

^: The negative production indicates that the products were consumed in meeting the fuel and other requirements for the ongoing turnaround.