

**Government of India**  
**Ministry of Petroleum and Natural Gas**  
**Economic & Statistics Division**  
 \*\*\*\*\*

New Delhi  
 Dated the 24<sup>th</sup> December, 2018

**Monthly Production Report**  
**November, 2018**

**1. Crude Oil**

**Crude oil production<sup>1</sup>** during November, 2018 was 2780.60 TMT which is 9.54% lower than target and 3.47% lower when compared with November, 2017. Cumulative crude oil production during April-November, 2018 was 23075.19 TMT which is 5.26% lower than target for the period and 3.63% lower than production during corresponding period of last year. Unit-wise and State-wise crude oil production is given at **Annexure-I**. Unit-wise crude oil production for the month of November, 2018 and cumulatively for the period April-November, 2018 vis-à-vis same period of last year has been shown in Table-1 and month-wise in Figure-1.

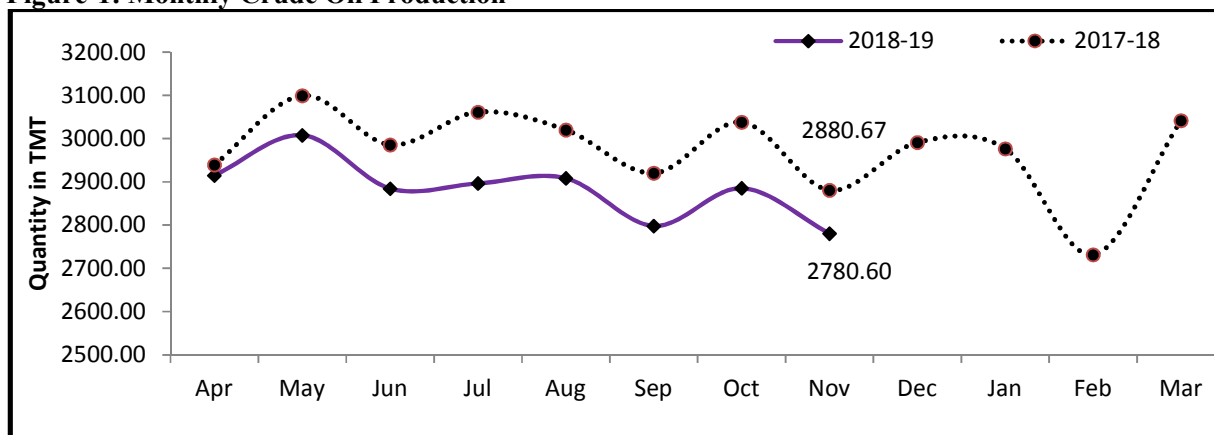
**Table-1: Crude Oil Production (in TMT)**

| Oil Company       | Target               | November (Month) |                |                |                  | April-November (Cumulative) |                 |                 |                  |
|-------------------|----------------------|------------------|----------------|----------------|------------------|-----------------------------|-----------------|-----------------|------------------|
|                   | 2018-19<br>(Apr-Mar) | 2018-19          |                | 2017-18        | % over last year | 2018-19                     |                 | 2017-18         | % over last year |
|                   |                      | Target           | Prod.*         | Prod.          |                  | Target                      | Prod.*          | Prod.           |                  |
| ONGC              | 23040.00             | 1923.60          | 1705.36        | 1795.29        | 94.99            | 15094.29                    | 14146.89        | 14986.62        | 94.40            |
| <b>OIL</b>        | <b>3738.00</b>       | <b>315.52</b>    | <b>272.93</b>  | <b>279.54</b>  | <b>97.63</b>     | <b>2431.15</b>              | <b>2241.63</b>  | <b>2260.48</b>  | <b>99.17</b>     |
| <b>PSC Fields</b> | <b>10233.60</b>      | <b>834.55</b>    | <b>802.31</b>  | <b>805.84</b>  | <b>99.56</b>     | <b>6831.59</b>              | <b>6686.67</b>  | <b>6696.65</b>  | <b>99.85</b>     |
| <b>Total</b>      | <b>37011.60</b>      | <b>3073.68</b>   | <b>2780.60</b> | <b>2880.67</b> | <b>96.53</b>     | <b>24357.02</b>             | <b>23075.19</b> | <b>23943.75</b> | <b>96.37</b>     |

Note: Totals may not tally due to rounding off.

\*: Provisional

**Figure-1: Monthly Crude Oil Production**



<sup>1</sup>Including condensate

Unit-wise production details with reasons for shortfall are as under:

1.1 Crude oil production by **ONGC** during November, 2018 was 1705.36 TMT which is 11.35% lower than the monthly target and 5.01% lower when compared with November, 2017. Cumulative crude oil production by ONGC during April-November, 2018 was 14146.89 TMT which is 6.28% lower than target for the period and lower by 5.60% than production during corresponding period of last year. Reason for shortfall are as under:

- ESP problem in wells of NBP field. Rig deployment post monsoon has started.
- Loss from WO-16 and B-127 fields in the absence of MOPUs Sagar Samrat and Sagar Laxmi.
- Sub-sea leakage some well fluid lines of Mumbai High & Neelam Heera Asset, leading to flow restriction.
- Increase in water cut / decline in liquid production in various fields of Mehsana, Assam and Rajahmundry Assets.

1.2 Crude oil production by **OIL** during November, 2018 was 272.93 TMT which is 13.50% lower than monthly target and 2.37% lower when compared with November, 2017. Cumulative crude oil production by OIL during April-November, 2018 was 2241.63 TMT which is 7.80% lower than target for the period and 0.83% lower than production during the corresponding period of last year. Major reason for lower production is less than planned contribution from work over wells and drilling wells.

1.3 Crude oil production by **Pvt/JVs** during November, 2018 was 802.31 TMT which is 3.86% lower than the monthly target and 0.44% lower than November, 2017. Cumulative crude oil production by Pvt/JVs during April-November, 2018 was 6686.67 TMT which is 2.12% lower than target for the period and marginally lower by 0.15% than the production during the corresponding period of last year. Major reasons for lower production are;

- Major deficit in production is from Mangala due to delay in Mangala Processing Terminal (MPT) Upgrade and 45 infills.
- Decline in production from stage-I wells and delay in stage-II wells in the Aishwarya Barmer Hill (ABH) field.
- Around 65 oil wells are closed due to various reasons like high water cut, require Work-over-Job (WOJ), etc. 32 wells are closed due to liquid handling constraint at MPT plant (CEIL).

## 2. Natural Gas

**Natural gas production** during November, 2018 was 2731.79 MMSCM which is 7.03% lower than the target for the month and 0.62% higher when compared with November, 2017. Cumulative natural gas production during April-November, 2018 was 21783.74 MMSCM which is 7.57% lower than target for the period and 0.69% lower than the production during corresponding period of last year. Unit-wise and state-wise natural gas production is given at

**Annexure-II.** Unit-wise natural gas production for the month of November, 2018 and cumulatively for the period April-November, 2018 vis-à-vis same period of last year has been shown in Table-2 and month-wise in Figure-2.

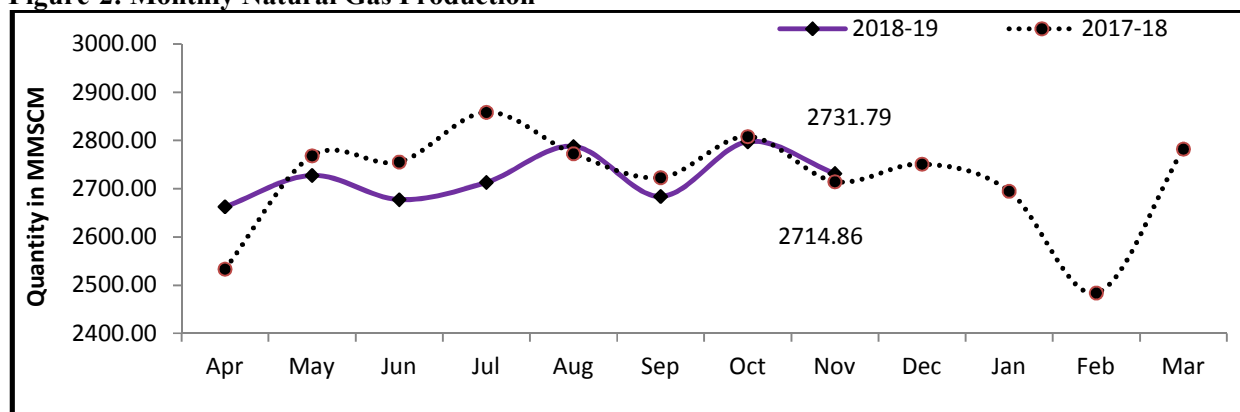
**Table-2: Natural Gas Production (MMSCM)**

| Oil Company  | Target            | November (Month) |                |                |                  | April-November (Cumulative) |                 |                 |                  |
|--------------|-------------------|------------------|----------------|----------------|------------------|-----------------------------|-----------------|-----------------|------------------|
|              | 2018-19 (Apr-Mar) | 2018-19          |                | 2017-18        | % over last year | 2018-19                     |                 | 2017-18         | % over last year |
|              |                   | Target           | Prod.*         | Prod.          |                  | Target                      | Prod.*          | Prod.           |                  |
| ONGC         | 25981.00          | 2179.63          | 2091.44        | 1957.57        | 106.84           | 17187.71                    | 16219.29        | 15650.38        | 103.64           |
| OIL          | 3120.00           | 262.44           | 226.88         | 235.50         | 96.34            | 2123.53                     | 1828.14         | 1960.01         | 93.27            |
| PSC Fields   | 6498.11           | 496.43           | 413.47         | 521.80         | 79.24            | 4256.29                     | 3736.31         | 4325.78         | 86.37            |
| <b>Total</b> | <b>35599.11</b>   | <b>2938.51</b>   | <b>2731.79</b> | <b>2714.86</b> | <b>100.62</b>    | <b>23567.53</b>             | <b>21783.74</b> | <b>21936.16</b> | <b>99.31</b>     |

Note: Totals may not tally due to rounding off.

\*: Provisional

**Figure-2: Monthly Natural Gas Production**



2.1 Natural gas production by **ONGC** during November, 2018 was 2091.44 MMSCM which is 4.05% lower than the monthly target but 6.84% higher when compared with November, 2017. Cumulative natural gas production by ONGC during April-November, 2018 was 16219.29 MMSCM which is 5.63% lower than the cumulative target but 3.64% higher than the production during the corresponding period of the last year. Some of the reasons for shortfall against monthly target are as under:

- Gas Production from Eastern Offshore remained restricted.
- Less than planned gas production from WO-16 and B-127 fields in the absence of MOPUs Sagar Samrat and Sagar Laxmi.
- Decline of pressure/potential in GS-4 Gas cap reservoir in Gandhar.

2.2 Natural gas production by **OIL** during November, 2018 was 226.88 MMSCM which is 13.55% lower than the monthly target and 3.66% lower than November, 2017. Cumulative natural gas production by OIL during April-November, 2018 was 1828.14 MMSCM which is 13.91% lower than the cumulative target and 6.73% lower than the production during the corresponding period of last year. Major reason for lower production is due to lower gas

production potential because of loss of production from few high production wells in Deohal area (Corrosion due to CO<sub>2</sub>).

2.3 Natural gas production by **Pvt/JVs** during November, 2018 was 413.47 MMSCM which is 16.71% lower than the monthly target and 20.76% lower when compared with November, 2017. Cumulative natural gas production by Pvt/JVs during April-November, 2018 was 3736.31 MMSCM which is 12.22% lower than the cumulative target and 13.63% lower than the production during the corresponding period of last year. Reasons for shortfall in production are as under:

- Sohagpur West CBM Block: Underperformance of CBM wells. Production impacted due to the constraint imposed by IFFCO on CBM offtake. **(RIL)**
- RJ-ON/6: Less offtake by buyer. Low gas production due to stuck up in two wells. **(Focus Energy Ltd)**

### 3. Refinery Production (in terms of crude oil processed)

**Refinery production** during November, 2018 was 21108.21 TMT which is 1.73% higher than the target for the month but 0.57% lower when compared with November, 2017. Cumulative production during April-November, 2018 was 171649.23 TMT which is 1.69% higher than the target for the period and 3.51% higher than the production during corresponding period of last year. Unit-wise production is given at **Annexure-III**. Company-wise production for the month of November, 2018 and cumulatively for the period April-November, 2018 vis-à-vis same period of last year has been shown in Table-3 and month-wise in Figure-3.

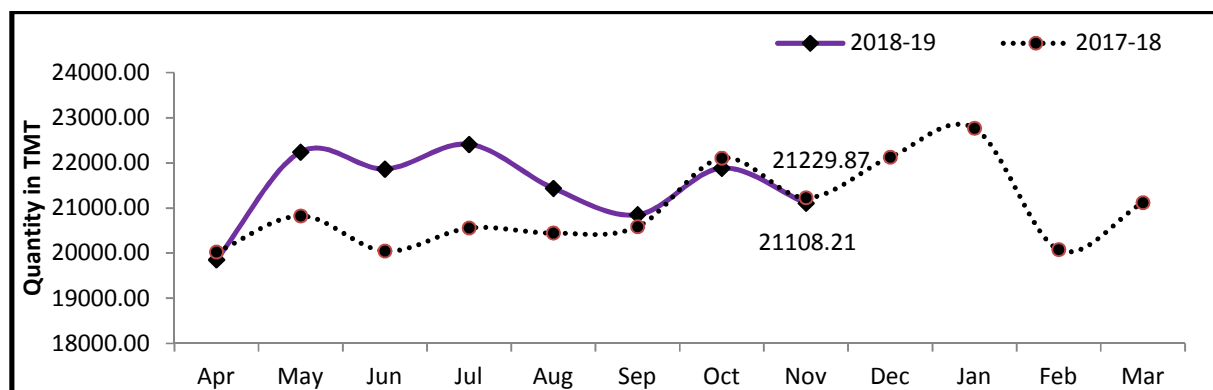
**Table 3: Refinery Production (TMT)**

| Oil Company  | Target               | November (Month) |                 |                 |                  | April-November (Cumulative) |                  |                  |                  |
|--------------|----------------------|------------------|-----------------|-----------------|------------------|-----------------------------|------------------|------------------|------------------|
|              | 2018-19<br>(Apr-Mar) | 2018-19          |                 | 2017-18         | % over last year | 2018-19                     |                  | 2017-18          | % over last year |
|              |                      | Target           | Prod.*          | Prod.           |                  | Target                      | Prod.*           | Prod.            |                  |
| CPSE         | 147759               | 12029.91         | 12651.15        | 12477.51        | 101.39           | 98347.84                    | 100385.07        | 95265.78         | 105.37           |
| IOCL         | 71150                | 6170.11          | 6223.98         | 6130.77         | 101.52           | 47817.02                    | 48134.67         | 45863.05         | 104.95           |
| BPCL         | 29000                | 1753.48          | 2568.42         | 2491.63         | 103.08           | 19123.78                    | 20538.59         | 17913.20         | 114.66           |
| HPCL         | 18000                | 1504.56          | 1545.57         | 1358.79         | 113.75           | 11933.29                    | 12350.94         | 12078.08         | 102.26           |
| CPCL         | 10500                | 937.50           | 627.28          | 834.18          | 75.20            | 7030.00                     | 6827.83          | 7030.71          | 97.11            |
| NRL          | 2850                 | 234.25           | 253.49          | 242.57          | 104.50           | 1905.21                     | 1935.64          | 1893.59          | 102.22           |
| MRPL         | 16200                | 1425.00          | 1428.39         | 1412.43         | 101.13           | 10500.00                    | 10559.03         | 10434.30         | 101.20           |
| ONGC         | 59                   | 5.01             | 4.02            | 7.14            | 56.24            | 38.53                       | 38.36            | 52.85            | 72.58            |
| JVs          | 17240                | 1542.00          | 1532.98         | 1220.62         | 125.59           | 11040.00                    | 11411.28         | 9317.40          | 122.47           |
| BORL         | 6400                 | 650.00           | 490.21          | 203.05          | 241.43           | 3800.00                     | 3086.90          | 4413.87          | 69.94            |
| HMEL         | 10840                | 892.00           | 1042.77         | 1017.58         | 102.48           | 7240.00                     | 8324.38          | 4903.54          | 169.76           |
| Private      | 88896                | 7177.33          | 6924.09         | 7531.75         | 91.93            | 59401.63                    | 59852.88         | 61251.52         | 97.72            |
| RIL          | 70470                | 5823.66          | 5913.97         | 5823.66         | 101.55           | 47477.30                    | 46515.17         | 47477.30         | 97.97            |
| NEL          | 18426                | 1353.67          | 1010.11         | 1708.09         | 59.14            | 11924.33                    | 13337.71         | 13774.22         | 96.83            |
| <b>TOTAL</b> | <b>253895</b>        | <b>20749.24</b>  | <b>21108.21</b> | <b>21229.87</b> | <b>99.43</b>     | <b>168789.47</b>            | <b>171649.23</b> | <b>165834.70</b> | <b>103.51</b>    |

Note: Totals may not tally due to rounding off.

\*: Provisional

**Figure 3: Monthly Refinery Production**



3.1 **CPSE Refineries’ production** during November, 2018 was 12651.15 TMT which is 5.16% higher than the target for the month and 1.39% higher when compared with November, 2017. Cumulative production by CPSE refineries during April-November, 2018 was 100385.07 TMT which is 2.07% higher than the target for the period and 5.37% higher than the production during corresponding period of last year. Reasons for shortfall of refinery production in some CPSE refineries are as under:

- IOCL, Guwahati: Throughput is lower due to CDU idling for DCU shutdown.
- IOCL, Haldia: Throughput is lower due to CDU-2 shutdown for furnace jobs.
- CPCL, Manali: Throughput is lower due to M&I shutdown of CDU-2 / FCCU.

3.2 **Production in JV refineries** during November, 2018 was 1532.98 TMT which is 0.59% lower than the target for the month but 25.59% higher when compared with November, 2017. Cumulative production by JVs refineries during April-November, 2018 was 11411.28 TMT which is 3.36% higher than the target for the period and 22.47% higher than the production during corresponding period of last year. Crude throughput of BORL-Bina Refinery was lower due to secondary processing units were under startup & stabilisation phase after the completion of turnaround activities.

3.3 **Production in private refineries** during November, 2018 was 6924.09 TMT which is lower by 3.53% than the target for the month and 8.07% lower when compared with November, 2017. Cumulative production by private refineries during April-November, 2018 was 59852.88 TMT which is 0.76% higher than the target for the period but lower by 2.28% compared to production during corresponding period of last year.

3.4 Refinery-wise details of the capacity utilization and production of petroleum products during the month of November, 2018 and cumulatively for the period April-November, 2018 vis-à-vis April-November, 2017 are given at **Annexures - IV and V** respectively.

\*\*\*\*\*

**MINISTRY OF PETROLEUM & NATURAL GAS**

**Annexure-I**

**Crude Oil Production during the month of November, 2018 and cumulatively for the period April-Nov, 2018 vis-à-vis April-Nov, 2017**

**(Para 1)**

(Qty: '000' Tonnes)

| Name of Undertaking/Unit/State | Planned production during the month* | Production during the |                                     |                                    | Cumulative Production                   |   |   | % variation over last year    |                            | % variation during the month under review over planned production |
|--------------------------------|--------------------------------------|-----------------------|-------------------------------------|------------------------------------|---|---|---|-------------------------------|----------------------------|---|
|                                |                                      | Month under review *  | Corresponding month of last year ** | Preceding month of current year ** | (April-November)                        |   |   | During the month under review | Upto the end of the period |   |
|                                |                                      |                       |                                     |                                    | Planned production during current year* | Actual production during current year * | Actual production during corresponding period of last year ** |                               |                            |   |
| (1)                            | (2)                                  | (3)                   | (4)                                 | (5)                                | (6)                                     | (7)                                     | (8)   | (9)                           | (10)                       | (11)  |
| <b>1. ONGC</b>                 | <b>1923.60</b>                       | <b>1705.36</b>        | <b>1795.29</b>                      | <b>1765.43</b>                     | <b>15094.288</b>                        | <b>14146.89</b>                         | <b>14986.62</b>   | <b>-5.01</b>                  | <b>-5.60</b>               | <b>-11.35</b>   |
| <b>Onshore</b>                 | <b>506.72</b>                        | <b>495.70</b>         | <b>489.49</b>                       | <b>518.40</b>                      | <b>4077.957</b>                         | <b>4055.36</b>                          | <b>4015.81</b>  | <b>1.27</b>                   | <b>0.98</b>                | <b>-2.17</b>  |
| Andhra Pradesh                 | 24.90                                | 23.62                 | 26.92                               | 24.40                              | 224.504                                 | 193.69                                  | 221.87  | -12.28                        | -12.70                     | -5.17   |
| Assam ^                        | 88.62                                | 82.08                 | 79.19                               | 88.66                              | 687.035                                 | 667.25                                  | 652.12  | 3.66                          | 2.32                       | -7.38   |
| Gujarat                        | 374.62                               | 366.84                | 363.25                              | 378.71                             | 3020.137                                | 2998.62                                 | 2966.65   | 0.99                          | 1.08                       | -2.08   |
| Tamil Nadu                     | 18.58                                | 23.16                 | 20.13                               | 26.63                              | 146.281                                 | 195.80                                  | 175.17  | 15.05                         | 11.78                      | 24.67   |
| <b>Offshore</b>                | <b>1416.88</b>                       | <b>1209.66</b>        | <b>1305.80</b>                      | <b>1247.03</b>                     | <b>11016.331</b>                        | <b>10091.52</b>                         | <b>10970.81</b>   | <b>-7.36</b>                  | <b>-8.01</b>               | <b>-14.63</b>   |
| Eastern Offshore               | 0.68                                 | 1.55                  | 0.65                                | 1.80                               | 5.608                                   | 10.71                                   | 5.70  | 140.65                        | 87.91                      | 129.18  |
| Western Offshore               | 1293.94                              | 1085.93               | 1191.70                             | 1119.58                            | 10077.855                               | 9088.86                                 | 10004.89  | -8.88                         | -9.16                      | -16.08  |
| Condensates                    | 122.26                               | 122.17                | 113.45                              | 125.65                             | 932.867                                 | 991.95                                  | 960.22  | 7.69                          | 3.30                       | -0.07   |
| <b>2. OIL (Onshore)</b>        | <b>315.52</b>                        | <b>272.93</b>         | <b>279.54</b>                       | <b>283.02</b>                      | <b>2431.146</b>                         | <b>2241.63</b>                          | <b>2260.48</b>  | <b>-2.37</b>                  | <b>-0.83</b>               | <b>-13.50</b>   |
| Assam                          | 314.58                               | 271.93                | 278.80                              | 282.05                             | 2424.841                                | 2235.02                                 | 2254.31   | -2.46                         | -0.86                      | -13.56  |
| Arunachal Pradesh              | 0.76                                 | 0.74                  | 0.62                                | 0.74                               | 4.834                                   | 5.02                                    | 5.03  | 19.48                         | -0.20                      | -2.37   |
| Rajasthan (heavy oil)          | 0.18                                 | 0.25                  | 0.12                                | 0.23                               | 1.471                                   | 1.59                                    | 1.14  | 105.04                        | 39.53                      | 39.92   |
| <b>3. Private / JVC</b>        | <b>834.55</b>                        | <b>802.31</b>         | <b>805.84</b>                       | <b>836.75</b>                      | <b>6831.587</b>                         | <b>6686.67</b>                          | <b>6696.65</b>  | <b>-0.44</b>                  | <b>-0.15</b>               | <b>-3.86</b>  |
| <b>Onshore</b>                 | <b>704.63</b>                        | <b>638.50</b>         | <b>653.84</b>                       | <b>672.05</b>                      | <b>5681.218</b>                         | <b>5421.84</b>                          | <b>5411.39</b>  | <b>-2.35</b>                  | <b>0.19</b>                | <b>-9.39</b>  |
| Andhra Pradesh                 | 6.56                                 | 0.59                  | 0.00                                | 1.32                               | 27.198                                  | 8.24                                    | 0.00  | 229.99                        | 0.00                       | -91.00  |
| Arunachal Pradesh              | 3.74                                 | 2.62                  | 3.46                                | 2.71                               | 29.603                                  | 23.29                                   | 29.45   | -24.46                        | -20.93                     | -29.99  |
| Assam                          | 3.42                                 | 2.77                  | 0.19                                | 3.11                               | 27.816                                  | 20.93                                   | 0.68  | 32.93                         | -                          | -19.09  |
| Gujarat                        | 19.29                                | 10.51                 | 11.93                               | 11.54                              | 134.086                                 | 91.37                                   | 91.07   | -11.89                        | 0.33                       | -45.54  |
| Rajasthan                      | 661.53                               | 614.18                | 631.45                              | 644.99                             | 5380.484                                | 5217.35                                 | 5233.79   | -2.74                         | -0.31                      | -7.16   |
| Tamil Nadu                     | 10.09                                | 7.84                  | 6.81                                | 8.38                               | 82.031                                  | 60.67                                   | 56.40   | 15.07                         | 7.57                       | -22.29  |
| <b>Offshore</b>                | <b>129.92</b>                        | <b>163.82</b>         | <b>152.00</b>                       | <b>164.70</b>                      | <b>1150.369</b>                         | <b>1264.83</b>                          | <b>1285.26</b>  | <b>7.78</b>                   | <b>-1.59</b>               | <b>26.09</b>  |
| Eastern Offshore               | 44.19                                | 57.28                 | 64.33                               | 55.94                              | 411.039                                 | 435.20                                  | 565.76  | -10.95                        | -23.08                     | 29.62   |
| Gujarat Offshore               | 44.21                                | 63.82                 | 31.36                               | 60.28                              | 375.703                                 | 474.11                                  | 254.03  | 103.49                        | 86.64                      | 44.35   |
| Western Offshore               | 41.52                                | 42.72                 | 56.31                               | 48.49                              | 363.628                                 | 355.53                                  | 465.47  | -24.13                        | -23.62                     | 2.90  |
| <b>GRAND TOTAL (1+2+3)</b>     | <b>3073.68</b>                       | <b>2780.60</b>        | <b>2880.67</b>                      | <b>2885.20</b>                     | <b>24357.020</b>                        | <b>23075.19</b>                         | <b>23943.75</b>   | <b>-3.47</b>                  | <b>-3.63</b>               | <b>-9.54</b>  |
| Onshore                        | 1526.88                              | 1407.12               | 1422.87                             | 1473.46                            | 12190.32                                | 11718.84                                | 11687.68  | -1.11                         | 0.27                       | -7.84   |
| Offshore                       | 1546.80                              | 1373.48               | 1457.79                             | 1411.74                            | 12166.70                                | 11356.35                                | 12256.07  | -5.78                         | -7.34                      | -11.21  |

Note: Totals may not tally due to rounding off figures.

^: Includes crude oil production of Tripura

\*: Provisional. \*\*: Revised

Reasons for shortfall are indicated in the note.

**MINISTRY OF PETROLEUM & NATURAL GAS**

**Annexure-II**

**Natural Gas Production during the month of November, 2018 and cumulatively for the period April-November, 2018 vis-à-vis April-November, 2017**

**(Para 2)**

(Qty: Million Cubic Meters)

| Name of Undertaking/Unit/State | Planned production during the month* | Production during the |                                     |                                    | Cumulative Production (April-November)  |   |   | % variation over last year    |                            | % variation during the month under review over planned production |
|--------------------------------|--------------------------------------|-----------------------|-------------------------------------|------------------------------------|---|---|---|-------------------------------|----------------------------|---|
|                                |                                      | Month under review *  | Corresponding month of last year ** | Preceding month of current year ** | Planned production during current year* | Actual production during current year * | Actual production during corresponding period of last year ** | During the month under review | Upto the end of the period |   |
| (1)                            | (2)                                  | (3)                   | (4)                                 | (5)                                | (6)                                     | (7)                                     | (8)   | (9)                           | (10)                       | (11)  |
| <b>1. ONGC</b>                 | <b>2179.63</b>                       | <b>2091.44</b>        | <b>1957.57</b>                      | <b>2110.39</b>                     | <b>17187.71</b>                         | <b>16219.29</b>                         | <b>15650.38</b>   | <b>6.84</b>                   | <b>3.64</b>                | <b>-4.05</b>  |
| <b>Onshore</b>                 | <b>483.25</b>                        | <b>473.89</b>         | <b>468.02</b>                       | <b>486.48</b>                      | <b>3894.70</b>                          | <b>3740.88</b>                          | <b>3754.16</b>  | <b>1.26</b>                   | <b>-0.35</b>               | <b>-1.94</b>  |
| Andhra Pradesh                 | 86.06                                | 91.28                 | 77.68                               | 94.43                              | 726.83                                  | 724.70                                  | 606.68  | 17.50                         | 19.45                      | 6.06  |
| Assam                          | 40.92                                | 39.36                 | 41.37                               | 42.62                              | 319.54                                  | 327.30                                  | 341.31  | -4.86                         | -4.11                      | -3.82   |
| Gujarat                        | 122.51                               | 109.46                | 124.70                              | 111.26                             | 1023.02                                 | 890.44                                  | 1054.59   | -12.22                        | -15.57                     | -10.65  |
| Rajasthan                      | 0.46                                 | 0.00                  | 0.63                                | 0.06                               | 3.75                                    | 4.31                                    | 3.11  | -100.00                       | 38.74                      | -100.00   |
| Tamil Nadu                     | 95.22                                | 95.63                 | 99.81                               | 98.71                              | 774.66                                  | 792.52                                  | 794.08  | -4.19                         | -0.20                      | 0.43  |
| Tripura                        | 138.09                               | 138.17                | 123.83                              | 139.40                             | 1046.91                                 | 1001.61                                 | 954.38  | 11.59                         | 4.95                       | 0.06  |
| <b>Offshore</b>                | <b>1696.38</b>                       | <b>1617.54</b>        | <b>1489.56</b>                      | <b>1623.91</b>                     | <b>13293.01</b>                         | <b>12478.42</b>                         | <b>11896.22</b>   | <b>8.59</b>                   | <b>4.89</b>                | <b>-4.65</b>  |
| Eastern Offshore               | 174.43                               | 90.62                 | 43.39                               | 94.81                              | 1333.73                                 | 579.38                                  | 383.24  | 108.86                        | 51.18                      | -48.05  |
| Western Offshore               | 1521.94                              | 1526.93               | 1446.17                             | 1529.10                            | 11959.29                                | 11899.04                                | 11512.98  | 5.58                          | 3.35                       | 0.33  |
| <b>2. OIL</b>                  | <b>262.44</b>                        | <b>226.88</b>         | <b>235.50</b>                       | <b>235.48</b>                      | <b>2123.53</b>                          | <b>1828.14</b>                          | <b>1960.01</b>  | <b>-3.66</b>                  | <b>-6.73</b>               | <b>-13.55</b>   |
| Assam                          | 243.72                               | 207.24                | 216.82                              | 215.09                             | 1971.27                                 | 1674.90                                 | 1814.72   | -4.42                         | -7.71                      | -14.97  |
| Arunachal Pradesh              | 1.05                                 | 0.84                  | 0.93                                | 2.28                               | 8.54                                    | 9.51                                    | 7.78  | -9.88                         | 22.18                      | -19.97  |
| Rajasthan                      | 17.67                                | 18.79                 | 17.75                               | 18.12                              | 143.72                                  | 143.73                                  | 137.50  | 5.91                          | 4.53                       | 6.36  |
| <b>3. Private / JVC</b>        | <b>496.43</b>                        | <b>413.47</b>         | <b>521.80</b>                       | <b>451.79</b>                      | <b>4256.29</b>                          | <b>3736.31</b>                          | <b>4325.78</b>  | <b>-20.76</b>                 | <b>-13.63</b>              | <b>-16.71</b>   |
| <b>Onshore</b>                 | <b>152.60</b>                        | <b>124.09</b>         | <b>110.73</b>                       | <b>146.15</b>                      | <b>1188.40</b>                          | <b>1122.86</b>                          | <b>898.50</b>   | <b>12.07</b>                  | <b>24.97</b>               | <b>-18.68</b>   |
| Andhra Pradesh                 | 2.65                                 | 0.28                  | 0.00                                | 0.56                               | 11.22                                   | 3.42                                    | 0.00  | 0.00                          | 0.00                       | -89.39  |
| Arunachal Pradesh              | 0.81                                 | 0.63                  | 1.15                                | 0.70                               | 6.60                                    | 10.93                                   | 17.78   | -45.34                        | -38.52                     | -22.23  |
| Assam                          | 29.73                                | 25.29                 | 5.23                                | 29.14                              | 241.83                                  | 199.01                                  | 8.26  | -                             | -                          | -14.93  |
| Gujarat                        | 8.65                                 | 5.76                  | 5.98                                | 5.82                               | 60.29                                   | 47.80                                   | 52.43   | -3.64                         | -8.84                      | -33.43  |
| Rajasthan                      | 108.11                               | 89.69                 | 97.20                               | 107.31                             | 846.99                                  | 845.59                                  | 811.20  | -7.73                         | 4.24                       | -17.05  |
| Tamil Nadu                     | 2.64                                 | 2.44                  | 1.16                                | 2.62                               | 21.47                                   | 16.12                                   | 8.84  | 109.78                        | 82.44                      | -7.72   |
| <b>CBM</b>                     | <b>128.40</b>                        | <b>60.80</b>          | <b>68.64</b>                        | <b>57.47</b>                       | <b>1044.31</b>                          | <b>471.09</b>                           | <b>470.08</b>   | <b>-11.42</b>                 | <b>0.22</b>                | <b>-52.65</b>   |
| Jharkhand (CBM)                | 0.35                                 | 0.22                  | 0.36                                | 0.24                               | 2.81                                    | 1.85                                    | 2.81  | -40.08                        | -34.20                     | -36.81  |
| Madhya Pradesh (CBM)           | 76.71                                | 30.74                 | 22.62                               | 28.47                              | 623.89                                  | 237.55                                  | 97.66   | 35.93                         | 143.25                     | -59.92  |
| West Bengal (CBM)              | 51.35                                | 29.84                 | 45.66                               | 28.77                              | 417.61                                  | 231.69                                  | 369.61  | -34.65                        | -37.31                     | -41.89  |
| <b>Offshore</b>                | <b>215.44</b>                        | <b>228.59</b>         | <b>342.43</b>                       | <b>248.17</b>                      | <b>2023.57</b>                          | <b>2142.35</b>                          | <b>2957.20</b>  | <b>-33.24</b>                 | <b>-27.55</b>              | <b>6.11</b>   |
| Eastern Offshore               | 66.05                                | 92.95                 | 178.20                              | 98.92                              | 860.88                                  | 1058.78                                 | 1620.88   | -47.84                        | -34.68                     | 40.74   |
| Gujarat Offshore               | 15.76                                | 10.87                 | 9.50                                | 10.60                              | 107.27                                  | 73.90                                   | 68.68   | 14.36                         | 7.59                       | -31.06  |
| Western Offshore               | 133.63                               | 124.77                | 154.73                              | 138.65                             | 1055.42                                 | 1009.67                                 | 1267.64   | -19.36                        | -20.35                     | -6.63   |
| <b>TOTAL (1+2+3)</b>           | <b>2938.51</b>                       | <b>2731.79</b>        | <b>2714.86</b>                      | <b>2797.67</b>                     | <b>23567.53</b>                         | <b>21783.74</b>                         | <b>21936.16</b>   | <b>0.62</b>                   | <b>-0.69</b>               | <b>-7.03</b>  |
| CBM                            | 128.40                               | 60.80                 | 68.64                               | 57.47                              | 1044.31                                 | 471.09                                  | 470.08  | -11.42                        | 0.22                       | -52.65  |
| Onshore                        | 898.29                               | 824.86                | 814.24                              | 868.12                             | 7206.63                                 | 6691.88                                 | 6612.67   | 1.30                          | 1.20                       | -8.18   |
| Offshore                       | 1911.81                              | 1846.14               | 1831.99                             | 1872.08                            | 15316.58                                | 14620.77                                | 14853.42  | 0.77                          | -1.57                      | -3.44   |

Note: Totals may not tally due to rounding off figures.

\*: Provisional. \*\*: Revised

CBM: Coal Bed Methane production.

Reasons for shortfall are indicated in the note.

MINISTRY OF PETROLEUM & NATURAL GAS

Annexure-III

Crude Oil Processed during the month of November, 2018 and cumulatively for the period April-November, 2018 vis-à-vis April-November, 2017

(Para 3)

(Qty: '000' Tonnes)

| Name of Undertaking/Unit | Planned production during the month* | Production during the |                                  |                                    | Cumulative Production                   |   |   | % variation over last year |                            | % variation during the month under review over planned production |
|--------------------------|--------------------------------------|-----------------------|----------------------------------|------------------------------------|---|---|---|----------------------------|----------------------------|---|
|                          |                                      | Month under review *  | Corresponding month of last year | Preceding month of current year ** | (April-November)                        |   |   | During the month under     | Upto the end of the period |   |
|                          |                                      |                       |                                  |                                    | Planned production during current year* | Actual production during current year * | Actual production during corresponding period of last year ** |                            |                            |   |
| (1)                      | (2)                                  | (3)                   | (4)                              | (5)                                | (6)                                     | (7)                                     | (8)   | (9)                        | (10)                       | (11)  |
| <b>A. Public Sector</b>  | <b>12029.91</b>                      | <b>12651.15</b>       | <b>12477.51</b>                  | <b>12938.81</b>                    | <b>98347.84</b>                         | <b>100385.07</b>                        | <b>95265.78</b>   | <b>1.39</b>                | <b>5.37</b>                | <b>5.16</b>   |
| 1. IOC, Guwahati         | 90.00                                | 79.87                 | 90.09                            | 65.86                              | 696.00                                  | 691.18                                  | 681.08  | -11.34                     | 1.48                       | -11.25  |
| 2. IOC, Barauni          | 547.63                               | 557.65                | 542.51                           | 587.46                             | 4291.21                                 | 4333.77                                 | 3559.22   | 2.79                       | 21.76                      | 1.83  |
| 3. IOC, Gujarat          | 1230.00                              | 1229.96               | 1252.50                          | 1260.56                            | 9264.99                                 | 9077.74                                 | 8827.05   | -1.80                      | 2.84                       | 0.00  |
| 4. IOC, Haldia           | 670.00                               | 571.83                | 661.94                           | 705.31                             | 5300.00                                 | 5310.64                                 | 5417.81   | -13.61                     | -1.98                      | -14.65  |
| 5. IOC, Mathura          | 825.00                               | 841.45                | 802.69                           | 874.43                             | 6297.10                                 | 6553.45                                 | 5919.04   | 4.83                       | 10.72                      | 1.99  |
| 6. IOC, Digboi           | 54.00                                | 56.47                 | 55.40                            | 59.65                              | 435.00                                  | 454.80                                  | 446.10  | 1.94                       | 1.95                       | 4.58  |
| 7. IOC, Panipat          | 1326.00                              | 1340.27               | 1354.60                          | 1383.11                            | 10766.00                                | 10907.14                                | 10254.29  | -1.06                      | 6.37                       | 1.08  |
| 8. IOC, Bongaigaon       | 180.82                               | 197.84                | 138.10                           | 207.23                             | 1466.88                                 | 1605.69                                 | 1514.12   | 43.26                      | 6.05                       | 9.41  |
| 9. IOC, Paradip          | 1246.66                              | 1348.64               | 1232.95                          | 1284.15                            | 9299.84                                 | 9200.27                                 | 9244.35   | 9.38                       | -0.48                      | 8.18  |
| <b>Total IOC</b>         | <b>6170.11</b>                       | <b>6223.98</b>        | <b>6130.77</b>                   | <b>6427.75</b>                     | <b>47817.02</b>                         | <b>48134.67</b>                         | <b>45863.05</b>   | <b>1.52</b>                | <b>4.95</b>                | <b>0.87</b>   |
| 10. BPCL, Mumbai         | 1153.96                              | 1217.70               | 1274.26                          | 1303.25                            | 9029.66                                 | 9724.44                                 | 8959.97   | -4.44                      | 8.53                       | 5.52  |
| 11. BPCL, Kochi          | 599.52                               | 1350.72               | 1217.37                          | 1265.94                            | 10094.12                                | 10814.15                                | 8953.23   | 10.95                      | 20.78                      | 125.30  |
| <b>Total BPCL</b>        | <b>1753.48</b>                       | <b>2568.42</b>        | <b>2491.63</b>                   | <b>2569.18</b>                     | <b>19123.78</b>                         | <b>20538.59</b>                         | <b>17913.20</b>   | <b>3.08</b>                | <b>14.66</b>               | <b>46.48</b>  |
| 12. HPCL, Mumbai         | 706.04                               | 751.83                | 715.45                           | 677.23                             | 5602.43                                 | 5803.50                                 | 5709.49   | 5.09                       | 1.65                       | 6.49  |
| 13. HPCL, Visakh         | 798.52                               | 793.74                | 643.34                           | 851.12                             | 6330.86                                 | 6547.44                                 | 6368.59   | 23.38                      | 2.81                       | -0.60   |
| <b>Total HPCL</b>        | <b>1504.56</b>                       | <b>1545.57</b>        | <b>1358.79</b>                   | <b>1528.35</b>                     | <b>11933.29</b>                         | <b>12350.94</b>                         | <b>12078.08</b>   | <b>13.75</b>               | <b>2.26</b>                | <b>2.73</b>   |
| 14. CPCL, Manali         | 900.00                               | 582.05                | 800.33                           | 629.78                             | 6730.00                                 | 6560.09                                 | 6717.60   | -27.27                     | -2.34                      | -35.33  |
| 15. CPCL, CBR            | 37.50                                | 45.23                 | 33.85                            | 44.32                              | 300.00                                  | 267.75                                  | 313.12  | 33.62                      | -14.49                     | 20.61   |
| <b>Total CPCL</b>        | <b>937.50</b>                        | <b>627.28</b>         | <b>834.18</b>                    | <b>674.10</b>                      | <b>7030.00</b>                          | <b>6827.83</b>                          | <b>7030.71</b>  | <b>-24.80</b>              | <b>-2.89</b>               | <b>-33.09</b>   |
| 16. NRL, Numaligarh      | 234.25                               | 253.49                | 242.57                           | 255.57                             | 1905.21                                 | 1935.64                                 | 1893.59   | 4.50                       | 2.22                       | 8.21  |
| 17. MRPL, Mangalore      | 1425.00                              | 1428.39               | 1412.43                          | 1478.54                            | 10500.00                                | 10559.03                                | 10434.30  | 1.13                       | 1.20                       | 0.24  |
| 18. ONGC, Tatipaka       | 5.01                                 | 4.017                 | 7.143                            | 5.320                              | 38.53                                   | 38.36                                   | 52.85   | -43.76                     | -27.42                     | -19.83  |
| <b>B. Joint Venture</b>  | <b>1542.00</b>                       | <b>1532.98</b>        | <b>1220.62</b>                   | <b>1159.32</b>                     | <b>11040.00</b>                         | <b>11411.28</b>                         | <b>9317.40</b>  | <b>25.59</b>               | <b>22.47</b>               | <b>-0.59</b>  |
| 19. BORL, Bina           | 650.00                               | 490.21                | 203.05                           | 81.56                              | 3800.00                                 | 3086.90                                 | 4413.87   | 141.43                     | -30.06                     | 0.00  |
| 20. HMEI, GGSR, Bhatinda | 892.00                               | 1042.77               | 1017.58                          | 1077.77                            | 7240.00                                 | 8324.38                                 | 4903.54   | 2.48                       | 69.76                      | 16.90   |
| <b>C. Private Sector</b> | <b>7177.33</b>                       | <b>6924.09</b>        | <b>7531.75</b>                   | <b>7784.93</b>                     | <b>59401.63</b>                         | <b>59852.88</b>                         | <b>61251.52</b>   | <b>-8.07</b>               | <b>-2.28</b>               | <b>-3.53</b>  |
| 21. RIL, Jamnagar        | 2745.50                              | 2683.79               | 2745.50                          | 2762.17                            | 22060.59                                | 21909.05                                | 22060.59  | -2.25                      | -0.69                      | -2.25   |
| 22. RIL, SEZ             | 3078.16                              | 3230.18               | 3078.16                          | 3241.28                            | 25416.71                                | 24606.12                                | 25416.71  | 4.94                       | -3.19                      | 4.94  |
| <b>Total RIL</b>         | <b>5823.66</b>                       | <b>5913.97</b>        | <b>5823.66</b>                   | <b>6003.45</b>                     | <b>47477.30</b>                         | <b>46515.17</b>                         | <b>47477.30</b>   | <b>1.55</b>                | <b>-2.03</b>               | <b>1.55</b>   |
| 23. NEL, Vadinar         | 1353.67                              | 1010.11               | 1708.09                          | 1781.48                            | 11924.33                                | 13337.71                                | 13774.22  | -40.86                     | -3.17                      | -25.38  |
| <b>TOTAL(A+B+C)</b>      | <b>20749.24</b>                      | <b>21108.21</b>       | <b>21229.87</b>                  | <b>21883.06</b>                    | <b>168789.47</b>                        | <b>171649.23</b>                        | <b>165834.70</b>  | <b>-0.57</b>               | <b>3.51</b>                | <b>1.73</b>   |

Note: Totals may not tally due to rounding off figures. \*: Provisional. \*\*:Revised

Reasons for shortfall are indicated in the note.



**MINISTRY OF PETROLEUM & NATURAL GAS**

Annexure-IV

Refinery-wise Capacity Utilisation during the month of November, 2018 and cumulatively for the period April-November, 2018 vis-à-vis April-November, 2017

(Para 3.4)

(Qty: '000' Tonnes)

| Name of Undertaking/Unit | November, 2018              |                      |                                     | November, 2017              |                    |                                     | Cumulative (April - November) |                      |                                     |                             |                       |                                     |
|--------------------------|-----------------------------|----------------------|-------------------------------------|-----------------------------|--------------------|-------------------------------------|-------------------------------|----------------------|-------------------------------------|-----------------------------|-----------------------|-------------------------------------|
|                          | Prorated Installed Capacity | Actual Crude T'put * | % Utilisation of Installed Capacity | Prorated Installed Capacity | Actual Crude T'put | % Utilisation of Installed Capacity | 2018-19                       |                      |                                     | 2017-18                     |                       |                                     |
|                          |                             |                      |                                     |                             |                    |                                     | Prorated Installed Capacity   | Actual Crude T'put * | % Utilisation of Installed Capacity | Prorated Installed Capacity | Actual Crude T'put ** | % Utilisation of Installed Capacity |
| (1)                      | (2)                         | (3)                  | (4)                                 | (5)                         | (6)                | (7)                                 | (8)                           | (9)                  | (10)                                | (11)                        | (12)                  | (13)                                |
| <b>A. Public Sector</b>  | <b>11677.00</b>             | <b>12651.15</b>      | <b>108.34</b>                       | <b>11424.00</b>             | <b>12477.51</b>    | <b>109.22</b>                       | <b>94970.00</b>               | <b>100385.07</b>     | <b>105.70</b>                       | <b>92918.00</b>             | <b>95265.78</b>       | <b>102.53</b>                       |
| 1. IOC, Guwahati         | 82.00                       | 79.87                | 97.40                               | 82.00                       | 90.09              | 109.87                              | 668.00                        | 691.18               | 103.47                              | 668.00                      | 681.08                | 101.96                              |
| 2. IOC, Barauni          | 493.00                      | 557.65               | 113.11                              | 493.00                      | 542.51             | 110.04                              | 4011.00                       | 4333.77              | 108.05                              | 4011.00                     | 3559.22               | 88.74                               |
| 3. IOC, Gujarat          | 1126.00                     | 1229.96              | 109.23                              | 1126.00                     | 1252.50            | 111.23                              | 9158.00                       | 9077.74              | 99.12                               | 9158.00                     | 8827.05               | 96.39                               |
| 4. IOC, Haldia           | 616.00                      | 571.83               | 92.83                               | 616.00                      | 661.94             | 107.46                              | 5014.00                       | 5310.64              | 105.92                              | 5014.00                     | 5417.81               | 108.05                              |
| 5. IOC, Mathura          | 658.00                      | 841.45               | 127.88                              | 658.00                      | 802.69             | 121.99                              | 5348.00                       | 6553.45              | 122.54                              | 5348.00                     | 5919.04               | 110.68                              |
| 6. IOC, Digboi           | 53.00                       | 56.47                | 106.55                              | 53.00                       | 55.40              | 104.52                              | 435.00                        | 454.80               | 104.55                              | 435.00                      | 446.10                | 102.55                              |
| 7. IOC, Panipat          | 1233.00                     | 1340.27              | 108.70                              | 1233.00                     | 1354.60            | 109.86                              | 10027.00                      | 10907.14             | 108.78                              | 10027.00                    | 10254.29              | 102.27                              |
| 8. IOC, Bongaigaon       | 193.00                      | 197.84               | 102.51                              | 193.00                      | 138.10             | 71.55                               | 1571.00                       | 1605.69              | 102.21                              | 1571.00                     | 1514.12               | 96.38                               |
| 9. IOC, Paradip          | 1233.00                     | 1348.64              | 109.38                              | 1233.00                     | 1232.95            | 0.00                                | 10027.00                      | 9200.27              | 91.75                               | 10027.00                    | 9244.35               | 0.00                                |
| <b>Total IOC</b>         | <b>5688.00</b>              | <b>6223.98</b>       | <b>109.42</b>                       | <b>5688.00</b>              | <b>6130.77</b>     | <b>107.78</b>                       | <b>46260.00</b>               | <b>48134.67</b>      | <b>104.05</b>                       | <b>46260.00</b>             | <b>45863.05</b>       | <b>99.14</b>                        |
| 10. BPCL, Mumbai         | 986.00                      | 1217.70              | 123.50                              | 986.00                      | 1274.26            | 129.24                              | 8022.00                       | 9724.44              | 121.22                              | 8022.00                     | 8959.97               | 111.69                              |
| 11. BPCL, Kochi          | 1274.00                     | 1350.72              | 106.02                              | 1019.00                     | 1217.37            | 119.47                              | 10362.00                      | 10814.15             | 104.36                              | 8289.00                     | 8953.23               | 108.01                              |
| <b>Total BPCL</b>        | <b>2260.00</b>              | <b>2568.42</b>       | <b>113.65</b>                       | <b>2005.00</b>              | <b>2491.63</b>     | <b>124.27</b>                       | <b>18384.00</b>               | <b>20538.59</b>      | <b>111.72</b>                       | <b>16311.00</b>             | <b>17913.20</b>       | <b>109.82</b>                       |
| 12. HPCL, Mumbai         | 616.00                      | 751.83               | 122.05                              | 616.00                      | 715.45             | 116.14                              | 5014.00                       | 5803.50              | 115.75                              | 5014.00                     | 5709.49               | 113.87                              |
| 13. HPCL, Visakh         | 682.00                      | 793.74               | 116.38                              | 685.00                      | 643.34             | 93.92                               | 5548.00                       | 6547.44              | 118.01                              | 5569.00                     | 6368.59               | 114.36                              |
| <b>Total HPCL</b>        | <b>1299.00</b>              | <b>1545.57</b>       | <b>118.98</b>                       | <b>1301.00</b>              | <b>1358.79</b>     | <b>104.44</b>                       | <b>10562.00</b>               | <b>12350.94</b>      | <b>116.94</b>                       | <b>10582.00</b>             | <b>12078.08</b>       | <b>114.14</b>                       |
| 14. CPCL, Manali         | 863.00                      | 582.05               | 67.44                               | 863.00                      | 800.33             | 92.74                               | 7019.00                       | 6560.09              | 93.46                               | 7019.00                     | 6717.60               | 95.71                               |
| 15. CPCL, CBR            | 82.00                       | 45.23                | 55.16                               | 82.00                       | 33.85              | 41.28                               | 668.00                        | 267.75               | 40.08                               | 668.00                      | 313.12                | 46.87                               |
| <b>Total CPCL</b>        | <b>945.00</b>               | <b>627.28</b>        | <b>66.38</b>                        | <b>945.00</b>               | <b>834.18</b>      | <b>88.27</b>                        | <b>7688.00</b>                | <b>6827.83</b>       | <b>88.81</b>                        | <b>7688.00</b>              | <b>7030.71</b>        | <b>91.45</b>                        |
| 16. NRL, Numaligarh      | 247.00                      | 253.49               | 102.63                              | 247.00                      | 242.57             | 253.49                              | 2005.00                       | 1935.64              | 96.54                               | 2005.00                     | 1893.59               | 94.44                               |
| 17. MRPL, Mangalore      | 1233.00                     | 1428.39              | 115.85                              | 1233.00                     | 1412.43            | 114.55                              | 10027.00                      | 10559.03             | 105.31                              | 10027.00                    | 10434.30              | 104.06                              |
| 18. ONGC, Tatipaka       | 5.00                        | 4.02                 | 80.34                               | 5.00                        | 7.14               | 142.86                              | 44.00                         | 38.36                | 87.19                               | 44.00                       | 52.85                 | 120.12                              |
| <b>B. Joint Venture</b>  | <b>1422.00</b>              | <b>1532.98</b>       | <b>107.80</b>                       | <b>1233.00</b>              | <b>1220.62</b>     | <b>99.00</b>                        | <b>11565.00</b>               | <b>11411.28</b>      | <b>98.67</b>                        | <b>10027.00</b>             | <b>9317.40</b>        | <b>92.92</b>                        |
| 19. BORL, Bina           | 493.00                      | 490.21               | 99.43                               | 493.00                      | 203.05             | 41.19                               | 4011.00                       | 3086.90              | 76.96                               | 4011.00                     | 4413.87               | 110.04                              |
| 20. HMEL, GGSR, Bhatinda | 929.00                      | 1042.77              | 112.25                              | 740.00                      | 1017.58            | 137.51                              | 7554.00                       | 8324.38              | 110.20                              | 6016.00                     | 4903.54               | 81.51                               |
| <b>C. Private Sector</b> | <b>7249.00</b>              | <b>6924.09</b>       | <b>95.52</b>                        | <b>6575.00</b>              | <b>7531.75</b>     | <b>114.55</b>                       | <b>58961.00</b>               | <b>59852.88</b>      | <b>101.51</b>                       | <b>53479.00</b>             | <b>61251.52</b>       | <b>114.53</b>                       |
| 21. RIL, Jamnagar        | 2712.00                     | 2683.79              | 98.96                               | 2712.00                     | 2745.50            | 101.24                              | 22060.00                      | 21909.05             | 99.32                               | 22060.00                    | 22060.59              | 100.00                              |
| 22. RIL, SEZ             | 2893.00                     | 3230.18              | 111.65                              | 2219.00                     | 3078.16            | 138.72                              | 23531.00                      | 24606.12             | 104.57                              | 18049.00                    | 25416.71              | 140.82                              |
| <b>Total RIL</b>         | <b>5605.00</b>              | <b>5913.97</b>       | <b>105.51</b>                       | <b>4932.00</b>              | <b>5823.66</b>     | <b>118.08</b>                       | <b>45591.00</b>               | <b>46515.17</b>      | <b>102.03</b>                       | <b>40110.00</b>             | <b>47477.30</b>       | <b>118.37</b>                       |
| 23. NEL, Vadinar         | 1644.00                     | 1010.11              | 61.44                               | 1644.00                     | 1708.09            | 103.90                              | 13370.00                      | 13337.71             | 99.76                               | 13370.00                    | 13774.22              | 103.02                              |
| <b>TOTAL(A+B+C)</b>      | <b>20348.00</b>             | <b>21108.21</b>      | <b>103.74</b>                       | <b>19233.00</b>             | <b>21229.87</b>    | <b>110.38</b>                       | <b>165496.00</b>              | <b>171649.23</b>     | <b>103.72</b>                       | <b>156425.00</b>            | <b>165834.70</b>      | <b>106.02</b>                       |

Note: Crude throughput in terms of crude oil processed. \*: Provisional. \*\*: Revised

**MINISTRY OF PETROLEUM & NATURAL GAS**

**Production of Petroleum Products during the month of November, 2018 and cumulatively for the period April-November, 2018 vis-à-vis April-November, 2017**

**Annexure-V**

**(Para 3.4)**

(Qty: '000' Tonnes)

| Name of Undertaking/Unit      | Planned production during the month* | Production during the |                                  |                                    | Cumulative Production |                  |                  | % variation over last year    |                            | % variation during the month under review over planned production |
|-------------------------------|--------------------------------------|-----------------------|----------------------------------|------------------------------------|-----------------------|------------------|------------------|-------------------------------|----------------------------|---|
|                               |                                      | Month under review *  | Corresponding month of last year | Preceding month of current year ** | (April-November)      |                  |                  | During the month under review | Upto the end of the period |   |
| (1)                           | (2)                                  | (3)                   | (4)                              | (5)                                | (6)                   | (7)              | (8)              |                               |                            | (9)   |
| <b>I. Refinery</b>            |                                      |                       |                                  |                                    |                       |                  |                  |                               |                            |   |
| <b>A. Public Sector</b>       | <b>11307.30</b>                      | <b>12182.97</b>       | <b>11716.32</b>                  | <b>12382.89</b>                    | <b>92285.25</b>       | <b>95000.27</b>  | <b>90012.19</b>  | <b>3.98</b>                   | <b>5.54</b>                | <b>7.74</b>   |
| 1. IOC, Guwahati              | 87.23                                | 110.08                | 101.68                           | 53.80                              | 672.95                | 773.77           | 754.74           | 8.26                          | 2.52                       | 26.19   |
| 2. IOC, Barauni               | 505.45                               | 545.16                | 469.16                           | 549.66                             | 3989.42               | 4075.68          | 3300.16          | 16.20                         | 23.50                      | 7.86  |
| 3. IOC, Gujarat               | 1139.78                              | 1143.53               | 1163.67                          | 1210.15                            | 8579.22               | 8563.77          | 8457.66          | -1.73                         | 1.25                       | 0.33  |
| 4. IOC, Haldia                | 620.00                               | 548.73                | 598.04                           | 659.25                             | 4894.15               | 5004.07          | 5061.28          | -8.25                         | -1.13                      | -11.50  |
| 5. IOC, Mathura               | 794.01                               | 820.45                | 776.14                           | 854.88                             | 6059.70               | 6417.73          | 5897.59          | 5.71                          | 8.82                       | 3.33  |
| 6. IOC, Digboi                | 54.48                                | 58.49                 | 59.06                            | 59.45                              | 428.67                | 457.93           | 446.13           | -0.97                         | 2.64                       | 7.36  |
| 7. IOC, Panipat               | 1362.23                              | 1484.55               | 1380.25                          | 1439.01                            | 10959.96              | 11183.70         | 10210.59         | 7.56                          | 9.53                       | 8.98  |
| 8. IOC, Bongaigaon            | 162.37                               | 194.38                | 162.42                           | 190.74                             | 1338.54               | 1483.40          | 1383.11          | 19.68                         | 7.25                       | 19.72   |
| 9. IOC, Paradip               | 1134.90                              | 1222.34               | 1113.86                          | 1203.32                            | 8363.67               | 8314.12          | 8293.55          | 9.74                          | 0.25                       | 7.70  |
| <b>Total IOC</b>              | <b>5860.44</b>                       | <b>6127.70</b>        | <b>5824.29</b>                   | <b>6220.26</b>                     | <b>45286.28</b>       | <b>46274.17</b>  | <b>43804.81</b>  | <b>5.21</b>                   | <b>5.64</b>                | <b>4.56</b>   |
| 10. BPCL, Mumbai              | 1111.42                              | 1199.37               | 1257.69                          | 1264.20                            | 8685.95               | 9357.97          | 8699.17          | -4.64                         | 7.57                       | 7.91  |
| 11. BPCL, Kochi               | 557.88                               | 1286.97               | 1109.23                          | 1252.46                            | 9387.52               | 10129.89         | 8471.22          | 16.02                         | 19.58                      | 130.69  |
| <b>Total BPCL</b>             | <b>1669.30</b>                       | <b>2486.34</b>        | <b>2366.92</b>                   | <b>2516.66</b>                     | <b>18073.47</b>       | <b>19487.86</b>  | <b>17170.39</b>  | <b>5.05</b>                   | <b>13.50</b>               | <b>48.94</b>  |
| 12. HPCL, Mumbai              | 662.39                               | 714.22                | 677.32                           | 660.87                             | 5256.18               | 5486.78          | 5343.59          | 5.45                          | 2.68                       | 7.83  |
| 13. HPCL, Visakh              | 738.36                               | 756.00                | 584.87                           | 779.14                             | 5854.35               | 6090.14          | 5899.79          | 29.26                         | 3.23                       | 2.39  |
| <b>Total HPCL</b>             | <b>1400.75</b>                       | <b>1470.23</b>        | <b>1262.19</b>                   | <b>1440.01</b>                     | <b>11110.53</b>       | <b>11576.92</b>  | <b>11243.38</b>  | <b>16.48</b>                  | <b>2.97</b>                | <b>4.96</b>   |
| 14. CPCL, Manali              | 814.79                               | 510.45                | 732.35                           | 559.29                             | 6077.60               | 5888.61          | 6107.56          | -30.30                        | -3.58                      | -37.35  |
| 15. CPCL, CBR                 | 37.95                                | 45.20                 | 34.22                            | 44.34                              | 303.60                | 269.14           | 315.64           | 32.09                         | -14.73                     | 19.11   |
| <b>Total CPCL</b>             | <b>852.74</b>                        | <b>555.65</b>         | <b>766.57</b>                    | <b>603.63</b>                      | <b>6381.20</b>        | <b>6157.75</b>   | <b>6423.20</b>   | <b>-27.51</b>                 | <b>-4.13</b>               | <b>-34.84</b>   |
| 16. NRL, Numaligarh           | 228.71                               | 255.35                | 230.61                           | 256.82                             | 1860.16               | 1911.88          | 1905.89          | 10.73                         | 0.31                       | 11.65   |
| 17. MRPL, Mangalore           | 1290.51                              | 1283.79               | 1259.10                          | 1340.41                            | 9536.38               | 9555.05          | 9414.50          | 1.96                          | 1.49                       | -0.52   |
| 18. ONGC, Tatipaka            | 4.84                                 | 3.91                  | 6.64                             | 5.09                               | 37.23                 | 36.66            | 50.02            | -41.06                        | -26.71                     | -19.15  |
| <b>B. Joint Venture</b>       | <b>1423.90</b>                       | <b>1426.36</b>        | <b>1115.40</b>                   | <b>1062.66</b>                     | <b>10290.40</b>       | <b>10665.08</b>  | <b>8637.78</b>   | <b>27.88</b>                  | <b>23.47</b>               | <b>0.17</b>   |
| 19. BORL, Bina                | 575.90                               | 408.93                | 153.82                           | 21.17                              | 3420.60               | 2741.61          | 4025.51          | 165.86                        | -31.89                     | -28.99  |
| 20. HMEL, GGSR, Bhatinda      | 848.00                               | 1017.43               | 961.59                           | 1041.50                            | 6869.80               | 7923.47          | 4612.26          | 5.81                          | 71.79                      | 19.98   |
| <b>C. Private Sector</b>      | <b>7822.85</b>                       | <b>7837.42</b>        | <b>8123.62</b>                   | <b>8773.16</b>                     | <b>62961.63</b>       | <b>66329.58</b>  | <b>64720.93</b>  | <b>-3.52</b>                  | <b>2.49</b>                | <b>0.19</b>   |
| 21. RIL, Jamnagar             | 2767.86                              | 2879.61               | 2767.86                          | 3076.55                            | 22082.75              | 23152.83         | 22082.75         | 4.04                          | 4.85                       | 4.04  |
| 22. RIL, SEZ                  | 3756.32                              | 4018.48               | 3756.32                          | 4055.28                            | 29442.55              | 30448.15         | 29442.55         | 6.98                          | 3.42                       | 6.98  |
| <b>Total RIL</b>              | <b>6524.18</b>                       | <b>6898.09</b>        | <b>6524.18</b>                   | <b>7131.84</b>                     | <b>51525.30</b>       | <b>53600.98</b>  | <b>51525.30</b>  | <b>5.73</b>                   | <b>4.03</b>                | <b>5.73</b>   |
| 23. NEL, Vadinar              | 1298.67                              | 939.33                | 1599.44                          | 1641.32                            | 11436.33              | 12728.60         | 13195.64         | -41.27                        | -3.54                      | -27.67  |
| <b>TOTAL(A+B+C)</b>           | <b>20554.05</b>                      | <b>21446.76</b>       | <b>20955.34</b>                  | <b>22218.71</b>                    | <b>165537.28</b>      | <b>171994.93</b> | <b>163370.90</b> | <b>2.35</b>                   | <b>5.28</b>                | <b>4.34</b>   |
| <b>II. Fractionators</b>      |                                      |                       |                                  |                                    |                       |                  |                  |                               |                            |   |
| ONGC                          | 269.31                               | 284.16                | 274.33                           | 305.62                             | 2140.33               | 2356.36          | 2153.56          | 3.58                          | 9.42                       | 5.52  |
| GAIL                          | 106.40                               | 99.87                 | 110.92                           | 121.53                             | 794.60                | 871.80           | 854.56           | -9.97                         | 2.02                       | -6.14   |
| OIL                           | 3.10                                 | 3.31                  | 3.18                             | 3.11                               | 23.30                 | 23.15            | 21.30            | 4.28                          | 8.65                       | 6.84  |
| <b>D. Total Fractionators</b> | <b>378.81</b>                        | <b>387.35</b>         | <b>388.43</b>                    | <b>430.25</b>                      | <b>2958.23</b>        | <b>3251.30</b>   | <b>3029.43</b>   | <b>-0.28</b>                  | <b>7.32</b>                | <b>2.25</b>   |
| <b>Grand Total (A+B+C+D)</b>  | <b>20932.85</b>                      | <b>21834.10</b>       | <b>21343.77</b>                  | <b>22648.96</b>                    | <b>168495.50</b>      | <b>175246.23</b> | <b>166400.32</b> | <b>2.30</b>                   | <b>5.32</b>                | <b>4.31</b>   |

Note: Totals may not tally due to rounding off figures.

\*: Provisional.

\*\* : Revised