

Government of India
Ministry of Petroleum and Natural Gas
Economic & Statistics Division

New Delhi
Dated the 26th December, 2019

Monthly Production Report
November, 2019

Crude Oil

1. **Crude oil production¹** during November, 2019 was 2614.29 TMT which is 8.69% lower than target and 5.98% lower when compared with November 2018. Cumulative crude oil production during April-November, 2019 was 21724.76 TMT which is 5.39% and 5.85% lower than target for the period and production during corresponding period of last year respectively. Unit-wise and State-wise crude oil production is given at **Annexure-I**. Unit-wise crude oil production for the month of November, 2019 and cumulatively for the period April-November, 2019 vis-à-vis same period of last year has been shown in Table-1 and month-wise in Figure-1.

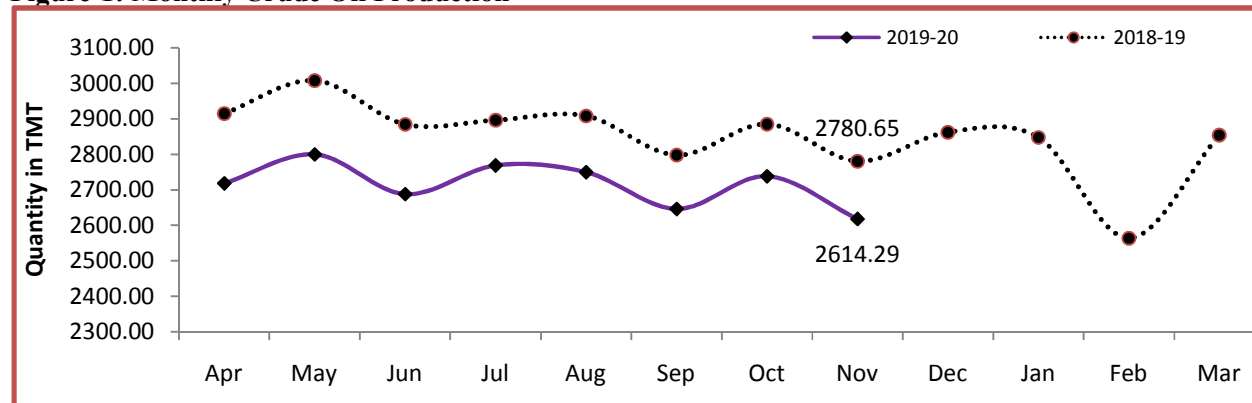
Table-1: Crude Oil Production (in TMT)

Oil Company	Target	November (Month)				April-November (Cumulative)			
		2019-20		2018-19	% over last year	2019-20		2018-19	% over last year
		Target	Prod.*	Prod.		Target	Prod.*	Prod.	
ONGC	22153.90	1805.53	1673.22	1705.41	98.11	14175.62	13638.33	14146.94	96.40
OIL	3424.90	280.36	260.17	272.93	95.33	2264.54	2147.00	2241.63	95.78
PSC Fields	9463.34	777.17	680.90	802.31	84.87	6521.08	5939.43	6686.67	88.82
Total	35042.15	2863.06	2614.29	2780.65	94.02	22961.24	21724.76	23075.24	94.15

Note: Totals may not tally due to rounding off.

*: Provisional

Figure-1: Monthly Crude Oil Production



¹Including condensate

Unit-wise production details with reasons for shortfall are as under:

1.1 Crude oil production by **ONGC** during November, 2019 was 1673.22 TMT which is 7.33% lower than the target and 1.89% lower when compared with November, 2018. Cumulative crude oil production by ONGC during April-November, 2019 was 13638.33 TMT which is 3.79% and 3.60% lower than target for the period and production during corresponding period of last year respectively.

- ESP issues in wells of NBP and Ratna R-series fields.
- Increase in water cut in certain wells of Mumbai High, Heera, Neelam and B-173A fields.
- Sub-sea leakage in some well fluid lines of MH Asset leading to flow restriction.
- Power shut downs & electrical faults in Mehsana.
- Decline in pressure & increase in water-cut in Kesanapalli West field in Rajahmundry and Lakwa field in Assam.

1.2 Crude oil production by **OIL** during November, 2019 was 260.17 TMT which is 7.20% lower than monthly target and 4.67% lower when compared with November, 2018. Cumulative crude oil production by OIL during April-November, 2019 was 2147.00 TMT which is 5.19% and 4.22% lower than target for the period and production during corresponding period of last year respectively. Major reasons for lower production is less than planned contribution from workover wells and drilling wells.

1.3 Crude oil production by **Pvt/JVs** during November, 2019 was 680.90 TMT which is 12.39% lower than the monthly target and 15.13% lower than November, 2018. Cumulative crude oil production by Pvt/JVs during April-November, 2019 was 5939.43 TMT which is 8.92% and 11.18% lower than target for the period and production during corresponding period of last year respectively. Reasons for shortfall in production are as under:

- RJ-ON-90/1-MANGLA (CEIL): Delay in making 45 FM-1/4 infill wells on line. Lag in liquidating the inventory of planned work overs and production optimization jobs. ESP failure in some wells.
- Operational issues in Bhagyam, Aishwarya and ABH fields. (CEIL)
- CB-ONN-2005/9 (Mercator): Oil production from Jyoti-1 is stopped. Well closed for long term pressure build up study and could not be put back in production due to non-grant of EC for development campaign.

Natural Gas

2. Natural gas production during November, 2019 was 2563.41 MMSCM which is 6.57% lower than the monthly target and 6.16% lower when compared with November, 2018.

Cumulative natural gas production during April-November, 2019 was 21209.55 MMSCM which is 6.40% and 2.64% lower than target for the period and production during corresponding period of last year respectively. Unit-wise and state-wise natural gas production is given at **Annexure-II**. Unit-wise natural gas production for the month of November, 2019 and cumulatively for the period April-November, 2019 vis-à-vis same period of last year has been shown in Table-2 and month-wise in Figure-2.

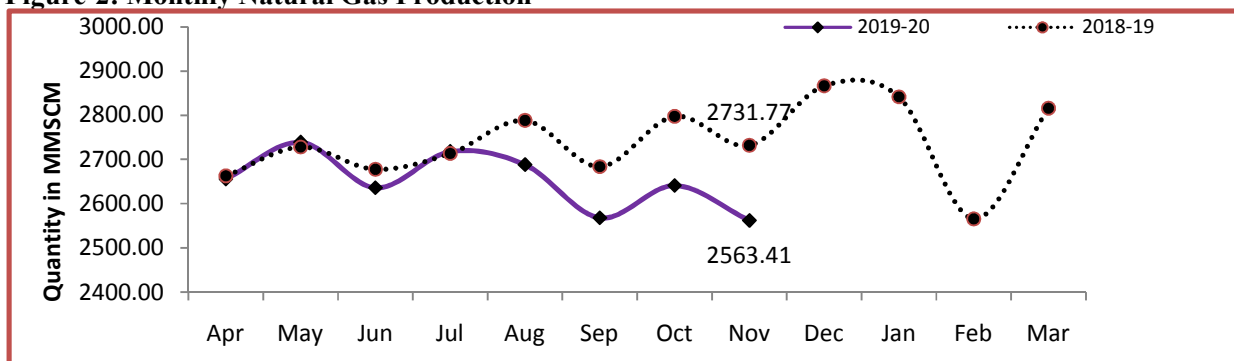
Table-2: Natural Gas Production (MMSCM)

Oil Company	Target	November (Month)				April-November (Cumulative)			
	2019-20 (Apr-Mar)	2019-20		2018-19	% over last year	2019-20		2018-19	% over last year
		Target	Prod.*	Prod.		Target	Prod.*	Prod.	
ONGC	25848.00	2030.00	1893.85	2091.42	90.55	16750.98	15919.90	16219.27	98.15
OIL	3309.59	274.30	228.20	226.88	100.58	2260.29	1851.81	1828.14	101.29
PSC Fields	5395.20	439.29	441.36	413.47	106.74	3649.65	3437.85	3736.31	92.01
Total	34552.79	2743.59	2563.41	2731.77	93.84	22660.93	21209.55	21783.71	97.36

Note: Totals may not tally due to rounding off.

*: Provisional

Figure-2: Monthly Natural Gas Production



2.1 Natural gas production by **ONGC** during November, 2019 was 1893.85 MMSCM which is 6.71% lower than target and 9.45% lower when compared with November 2018. Cumulative natural gas production by ONGC during April-November, 2019 was 15919.90 MMSCM which is 4.96% and 1.85% lower than target for the period and production during corresponding period of last year respectively.

- Partial Shutdown of VA (Vashistha) & S1 plant for maintenance Job in Eastern Offshore.
- Less gas off take by OTPC, Tripura.
- Less offtake by gas consumers in Cauvery & Rajahmundry Assets and no gas off-take in Jodhpur & Silchar Assets.

2.2 Natural gas production by **OIL** during November, 2019 was 228.20 MMSCM which is 0.58% higher than the production of corresponding month of last year but lower by 16.81% monthly target. Cumulative natural gas production by OIL during April-November, 2019 was 1851.81 MMSCM which is 1.29% higher than the production during the

corresponding period of last year but 5.80% lower than the cumulative target. Reasons for shortfall in production are as under:

- Environmental loss (Bandh and miscreant activities).
- Less offtake by M/s. BVFCL due to major repeated unscheduled maintenance issue.

2.3 Natural gas production by **Pvt/JVs** during November, 2019 was 441.36 MMSCM which is 0.47% higher than monthly target and 6.74% higher than November, 2018. Cumulative natural gas production by Pvt/JVs during April-November, 2019 was 3437.85 MMSCM which is 5.80% and 7.99% lower than target for the period and production during corresponding period of last year respectively. Reasons for shortfall in production are as under:

- RJ-ON/6: Production is lower due to less offtake by consumers. Production also lower due to zone pressure depletions in some wells, water ingress and tubing damage. (FEL)
- Sohagpur West: Dewatering wells gas breakout awaited, slow gas ramp up in pilot wells and scaling in producing wells. (RIL)

3. Refinery Production (in terms of crude oil processed)

Refinery production during November, 2019 was 21900.62 TMT which is 11.17% higher than the target for the month and 3.75% higher when compared with November, 2018. Cumulative production during April-November, 2019 was 169555.04 TMT which is 0.93% higher than the target for the period but 1.22% lower than production during corresponding period of last year respectively. Unit-wise production is given at **Annexure-III**. Company-wise production for the month of November, 2019 and cumulatively for the period April-November, 2019 vis-à-vis same period of last year has been shown in Table-3 and month-wise in Figure-3.

Figure 3: Monthly Refinery Production

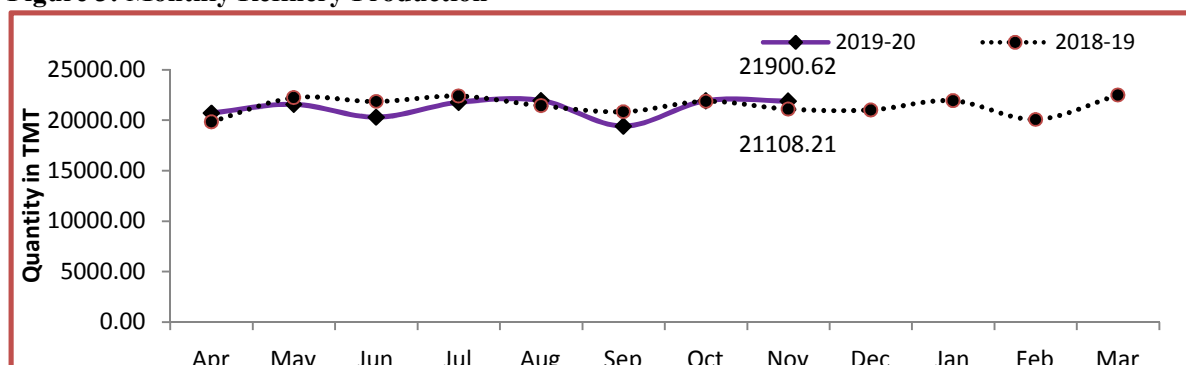


Table 3: Refinery Production (TMT)

Oil Company	Target	November (Month)				April-November (Cumulative)			
	2019-20 (Apr-Mar)	2019-20		2018-19	% over last year	2019-20		2018-19	% over last year
		Target	Prod.*	Prod.		Target	Prod.*	Prod.	
CPSE	147944.81	11237.87	12572.54	12651.15	99.38	95630.55	96230.25	100385.07	95.86
IOCL	71900.25	5004.44	6090.08	6223.98	97.85	46285.12	46952.97	48134.67	97.55
BPCL	30900.00	2700.00	2700.98	2568.42	105.16	20329.99	20585.96	20538.59	100.23
HPCL	16499.00	1079.00	1520.37	1545.57	98.37	10692.00	11393.18	12350.94	92.25
CPCL	10400.00	900.00	788.63	627.28	125.72	6740.00	6688.47	6827.83	97.96
NRL	2799.80	125.40	118.71	253.49	46.83	1913.90	1759.48	1935.64	90.90
MRPL	15400.00	1425.00	1346.26	1428.39	94.25	9640.00	8791.63	10559.03	83.26
ONGC	45.76	4.04	7.53	4.02	187.55	29.54	58.55	38.36	152.62
JVs	18755.00	1538.00	1730.29	1532.98	112.87	12505.00	13141.41	11411.28	115.16
BORL	7800.00	640.00	657.83	490.21	134.19	5200.00	5103.57	3086.90	165.33
HMEL	10955.00	898.00	1072.46	1042.77	102.85	7305.00	8037.85	8324.38	96.56
Private	88040.52	6924.09	7597.78	6924.09	109.73	59852.88	60183.37	59852.88	100.55
RIL	69145.00	5913.97	5939.81	5913.97	100.44	46515.17	46340.49	46515.17	99.62
EOL	18895.52	1010.11	1657.97	1010.11	164.14	13337.71	13842.89	13337.71	103.79
TOTAL	254740.32	19699.96	21900.62	21108.21	103.75	167988.43	169555.04	171649.23	98.78

Note: Totals may not tally due to rounding off.

*: Provisional

3.1 CPSE Refineries' production during November, 2019 was 12572.54 TMT which is 11.88% higher than the target for the month but 0.62% lower when compared with November, 2018. Cumulative production by CPSE refineries during April-November, 2019 was 96230.25 TMT which is 0.63% higher than target for the period but 4.14% lower than production during corresponding period of last year respectively. Reasons for shortfall of refinery production in some CPSE refineries are as under:

- IOCL, Mathura and Paradip: Lower due to deferment of shutdown.
- IOCL, Panipat: Lower than plan due to high due to high DHDT and SKO feedstock.
- BPCL, Kochi: Lower due to operational issues.
- HPCL, Visakh: Lower due to primary unit shutdown.
- CPCL, Manali: Lower due to raw diesel containment because of increase in duration of DHDT M&I and revamp shutdown.
- NRL, Numaligarh & MRPL, Mangalore: Lower due to HSD ullage constraint.

3.2 Production in JV refineries during November, 2019 was 1730.29 TMT which is 12.50% higher when compared with the production of November, 2019 and 12.87% higher than the target for the month. Cumulative production by JVs refineries during April-November, 2019 was 13141.41 TMT which is 5.09% and 15.16 higher than the target for the period and production during corresponding period of last year.

3.3 Production in private refineries during November, 2019 was 7597.78 TMT which is 9.73% lower than the target as well as corresponding month of last year. Cumulative

production by private refineries during April-November, 2019 was 60183.37 TMT which is 0.55% higher than the target as well as corresponding period of last year.

- 3.4** Refinery-wise details of the capacity utilization and production of petroleum products during the month of November, 2019 and cumulatively for the period April-November, 2019 vis-à-vis April-November, 2018 are given at **Annexures - IV and V** respectively.

MINISTRY OF PETROLEUM & NATURAL GAS

Annexure-V (Para 3.4)

Production of Petroleum Products during the month of November, 2019 and cumulatively for the period April-November, 2019 vis-à-vis April-November, 2018

(Figures in Thousand Metric Tons)

Name of Undertaking/Unit	Planned production during the month	Production during the			Cumulative Production (April-November)			% variation over last year		% variation during the month under review over planned production
		Month under review *	Corresponding month of last year	Preceding month of current year **	Planned production during current year**	Actual production during current year*	Actual production during corresponding period of last year	During the month under review	Upto the end of the period	
(1)	(2)	(3)	(4)	(5)	(6)	(7)	(8)	(9)	(10)	(11)
A. Public Sector	10604.12	11860.20	12182.97	11886.44	90028.94	90669.39	95000.27	-2.65	-4.56	11.85
1. IOC, Guwahati	92.77	109.83	110.08	100.60	707.60	813.44	773.77	-0.23	5.13	18.38
2. IOC, Barauni	549.50	572.12	545.16	533.35	4059.15	3911.93	4075.68	4.95	-4.02	4.12
3. IOC, Gujarat	1219.81	1203.36	1143.53	1213.85	7957.92	7607.26	8563.77	5.23	-11.17	-1.35
4. IOC, Haldia	324.94	332.32	548.73	355.34	4259.54	4291.00	5004.07	-39.44	-14.25	2.27
5. IOC, Mathura	0.00	760.24	820.45	833.23	5645.67	6668.37	6417.73	-7.34	3.91	-
6. IOC, Digboi	70.47	60.97	58.49	62.33	546.65	434.05	457.93	4.23	-5.21	-13.49
7. IOC, Panipat	1391.61	1308.43	1484.55	1255.12	10077.43	9822.32	11183.70	-11.86	-12.17	-5.98
8. IOC, Bongaigaon	97.38	197.05	194.38	200.55	1274.77	1569.30	1483.40	1.37	5.79	102.36
9. IOC, Paradip	1059.49	1265.86	1222.34	1260.73	9530.38	9523.04	8314.12	3.56	14.54	19.48
Total IOC	4805.97	5810.17	6127.70	5815.09	44059.12	44640.70	46274.17	-5.18	-3.53	20.89
10. BPCL, Mumbai	1247.00	1276.93	1199.37	1335.27	9198.00	9290.52	9357.97	6.47	-0.72	2.40
11. BPCL, Kochi	1309.34	1326.98	1286.97	1316.17	10047.07	10227.17	10129.89	3.11	0.96	1.35
Total BPCL	2556.34	2603.91	2486.34	2651.43	19245.07	19517.69	19487.86	4.73	0.15	1.86
12. HPCL, Mumbai	264.00	715.48	714.22	734.25	4475.00	5127.87	5486.78	0.18	-6.54	171.01
13. HPCL, Visakh	743.00	653.85	756.00	591.10	5496.00	5428.58	6090.14	-13.51	-10.86	-12.00
Total HPCL	1007.00	1369.33	1470.23	1325.34	9971.00	10556.45	11576.92	-6.86	-8.81	35.98
14. CPCL, Manali	812.39	705.09	510.45	635.34	6067.09	6127.37	5888.61	38.13	4.05	-13.21
15. CPCL, CBR	0.00	0.00	45.20	0.00	0.00	0.88	269.14	-	-	-
Total CPCL	812.39	705.09	555.65	635.34	6067.09	6128.25	6157.75	26.89	-0.48	-13.21
16. NRL, Numaligarh	123.60	111.13	255.35	238.76	1876.02	1698.07	1911.88	-56.48	-11.18	-10.09
17. MRPL, Mangalore	1294.94	1253.50	1283.79	1213.79	8782.23	8073.61	9555.05	-2.36	-15.50	-3.20
18. ONGC, Tatipaka	3.88	7.08	3.91	6.70	28.40	54.63	36.66	80.86	49.02	82.45
B. Joint Venture	1414.72	1670.89	1426.36	1671.06	11493.60	12333.57	10665.08	17.14	15.64	18.11
19. BORL, Bina	569.72	608.03	408.93	600.20	4628.60	4671.42	2741.61	48.69	70.39	6.72
20. HMEL, GGSR, Bhatinda	845.00	1062.86	1017.43	1070.86	6865.00	7662.15	7923.47	4.46	-3.30	25.78
C. Private Sector	7837.42	8581.66	7837.42	8766.05	66329.58	67185.50	66329.58	9.50	1.29	9.50
21. RIL, Jamnagar	2879.61	3036.09	2879.61	3099.33	23152.83	22550.72	23152.83	5.43	-2.60	5.43
22. RIL, SEZ	4018.48	4006.06	4018.48	3930.34	30448.15	31407.54	30448.15	-0.31	3.15	-0.31
Total RIL	6898.09	7042.15	6898.09	7029.68	53600.98	53958.26	53600.98	2.09	0.67	2.09
23. EOL, Vadinar	939.33	1539.50	939.33	1736.37	12728.60	13227.24	12728.60	63.89	3.92	63.89
TOTAL REFINERY (A+B+C)	19856.26	22112.74	21446.76	22323.55	167852.11	170188.46	171994.93	3.11	-1.05	11.36
ONGC	271.23	289.18	284.16	290.12	2212.35	2308.04	2356.36	1.76	-2.05	6.62
GAIL	102.66	108.24	99.87	116.61	814.94	851.93	871.80	8.38	-2.28	5.43
OIL	3.05	3.00	3.31	2.81	21.10	19.41	23.15	-9.54	-16.13	-1.77
D. Total Fractionators	376.94	400.41	387.35	409.54	3048.39	3179.38	3251.30	3.37	-2.21	6.23
Grand Total (A+B+C+D)	20233.20	22513.15	21834.10	22733.09	170900.51	173367.84	175246.23	3.11	-1.07	11.27

Note: Totals may not tally due to rounding off figures. *: Provisional. **: Revised